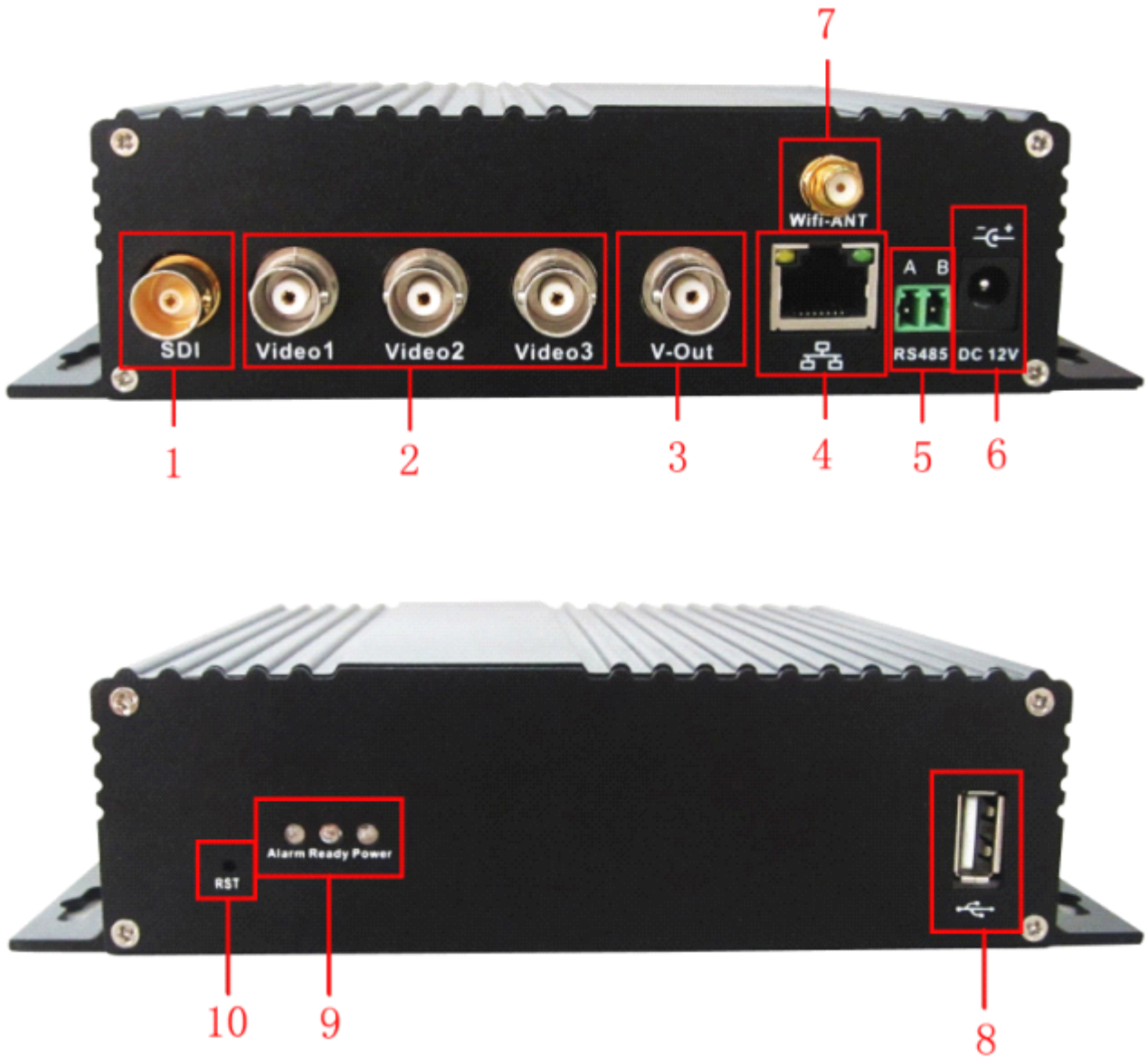

Encoder、HD decoder、professional NVR fast use manual

Catalogue

Chapeter 1 Product Introduction.....	2
1.1 The encoder's interface.....	2
1.2 The decoder's interface.....	3
1.3 professional NVR panel.....	4
Chapeter 2 Basic Operation.....	5
2.1 Login.....	5
2.2 Network Configuration.....	6
2.3 Channel Manage.....	6
2.4 Preview.....	10
2.5 Video Playback.....	10

Chapter 1 Product Introduction

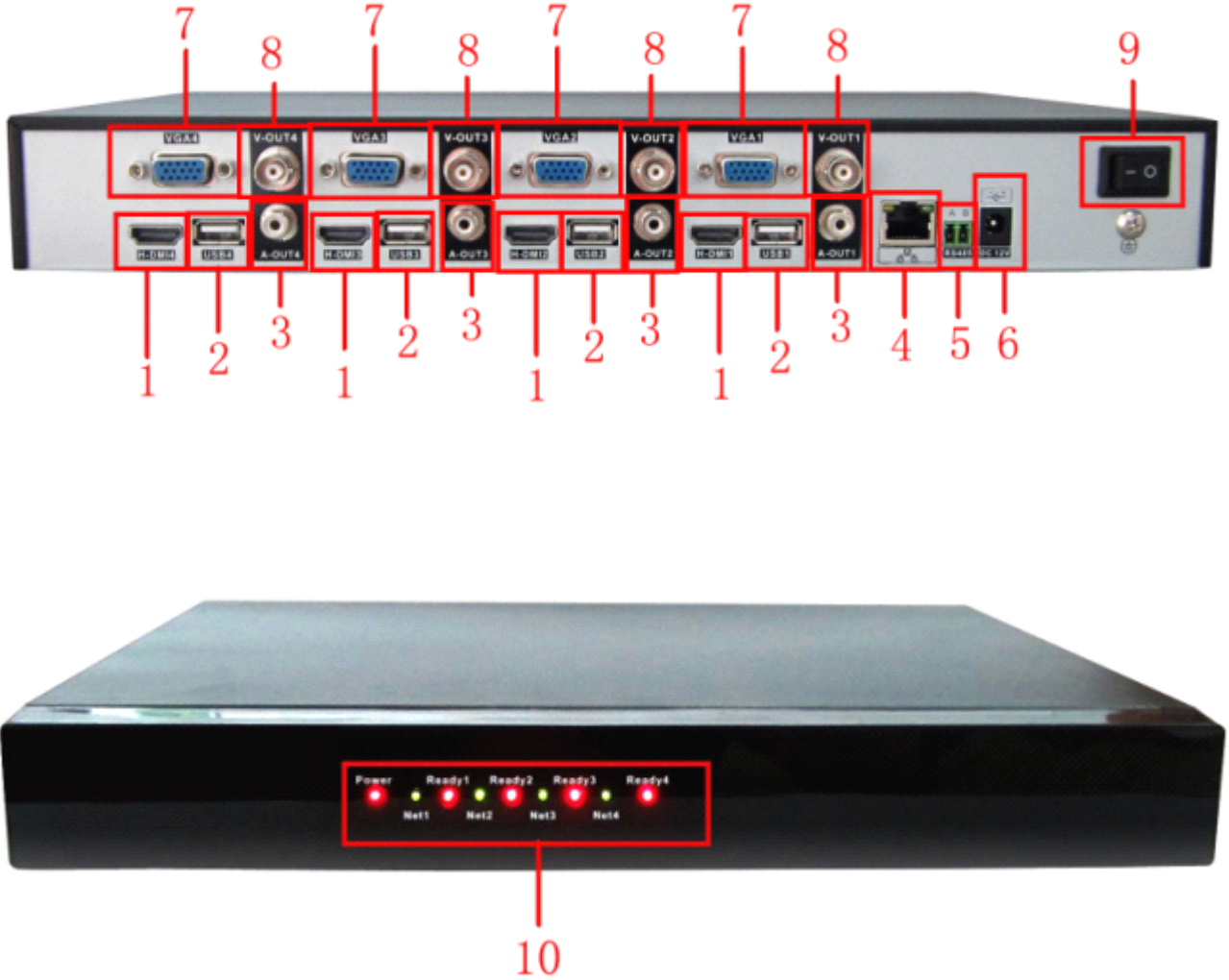
1.1 The encoder's interface



Pic 1.1

(1)	SDI input	(2)	BNC input	(3)	BNC output	(4)	Network
(5)	RS485	(6)	Power supply	(7)	Wifi	(8)	USB port
(9)	Indicator light	(10)	Reset				

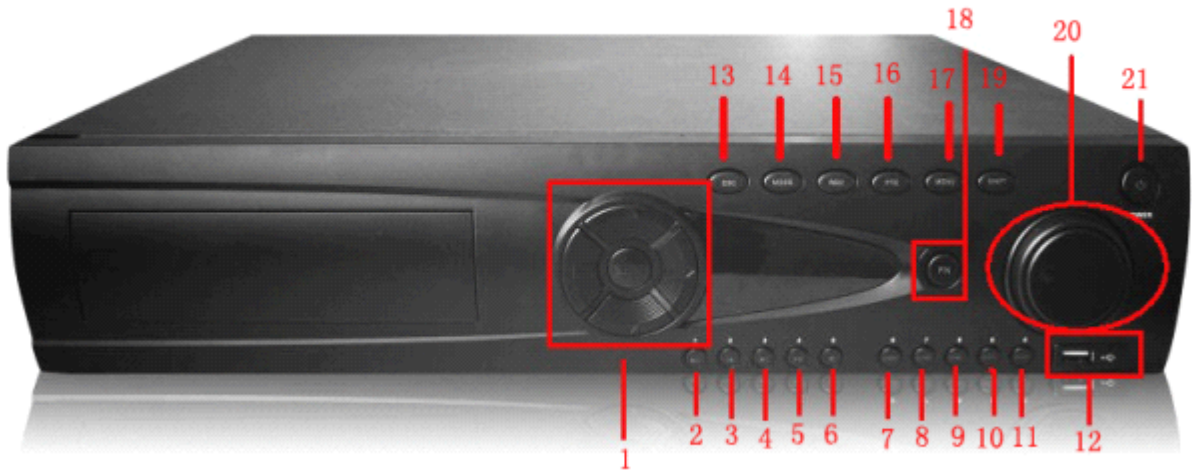
1.2 The decoder's interface



Pic 1.2

(1)	HDMI output	(2)	USB	(3)	Audio output
(4)	Network	(5)	RS485	(6)	Power supply
(7)	VGA	(8)	BNC output	(9)	Switch
(10)	Front panel(1 power light 4 group indicator lights, every group has 2 lights(working light,net light))				

1.3 The professional NVR panel(photos for reference only)



Note:the demand of professional NVR HDD:64M buffer or more,7200

rpm or more.

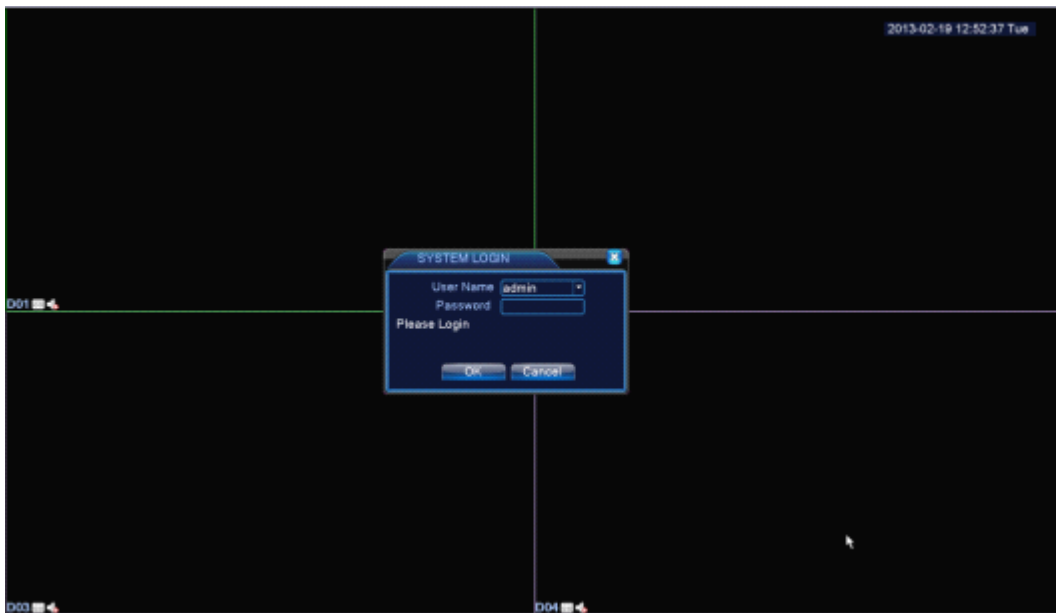
(1)	Direction/enter	(2)	Play pause/1	(3)	Previous file/2	(4)	Next file/3
(5)	Backward pause/4	(6)	Playback stop/5	(7)	Record search/6	(8)	Alarm output/7
(9)	Camera narrowing/8	(10)	Camera amplification/9	(11)	Preset setting/0	(12)	USB
(13)	ESC	(14)	Screen switch	(15)	Record control	(16)	PTZ control
(17)	Main Menu	(18)	Function	(19)	shift	(20)	Shuttle
(21)	Power switch						

Chapter 2 Basic operation

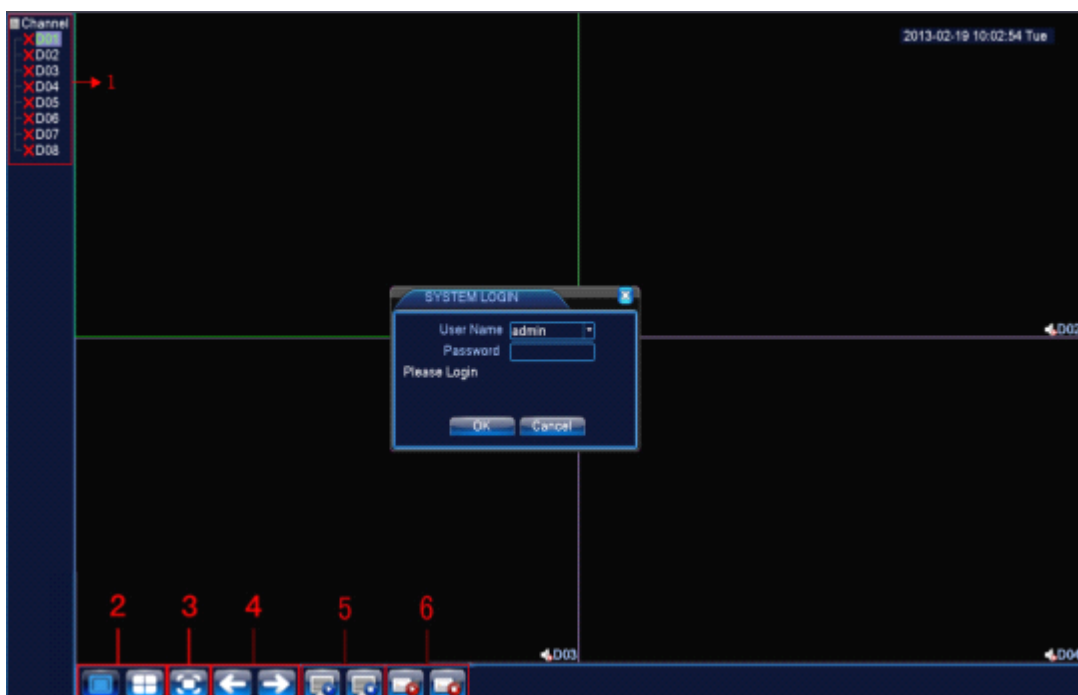
2.1 Login

When the device boots up, the user must login and the system provides the corresponding functions with the user purview

There are two user settings, **admin** and **guest**, they have no password. **Admin** is the super user purview, guest's permissions are preview and video playback.



Pic 2.1.1 (encoder, decoder) login



Pic 2.1.2 professional NVR login interface

(1)	Channel name and status display,click “channel” can pack up,and right click the channel can configurate it.	(2)	Screen switch
(3)	Full screen display	(4)	on the next page turning,when choosing a non maximum number of channels,the operation can be carried our.
(5)	All channel Play	(6)	All channel Record

Password protection: If the password is continuous wrong three times, the alarm will start. If the password is continuous wrong five times, the account will be locked. (Through reboot or after half an hour, the account will be unlocked automatically).

For your system security, please modify your password after first login.

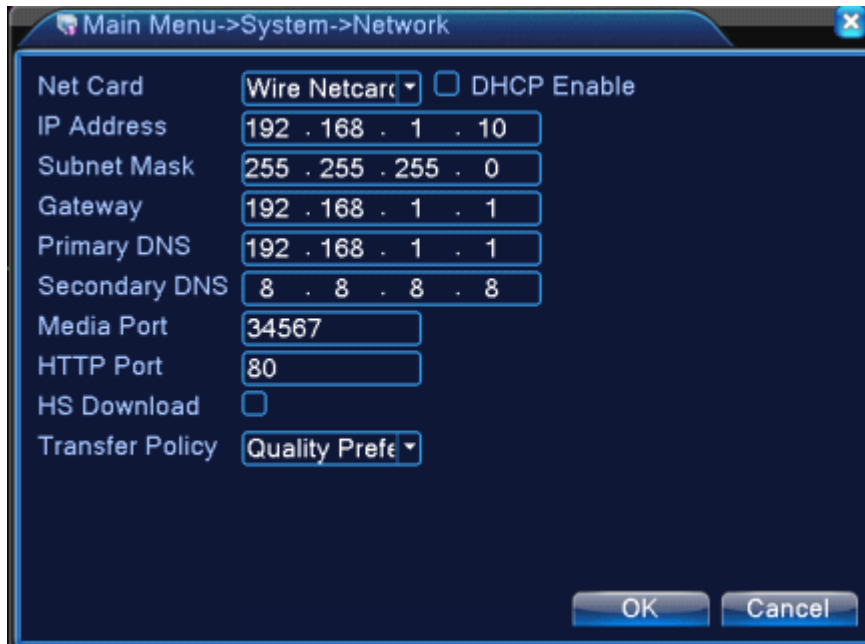
2.2 Network setup

To set the IP,the path is [Main menu]>[System]>[Network]

[IP Address]:default 192.168.1.10;

[Subnet Mask]: default 255.255.255.0;

[Gateway]:default 192.168.1.1



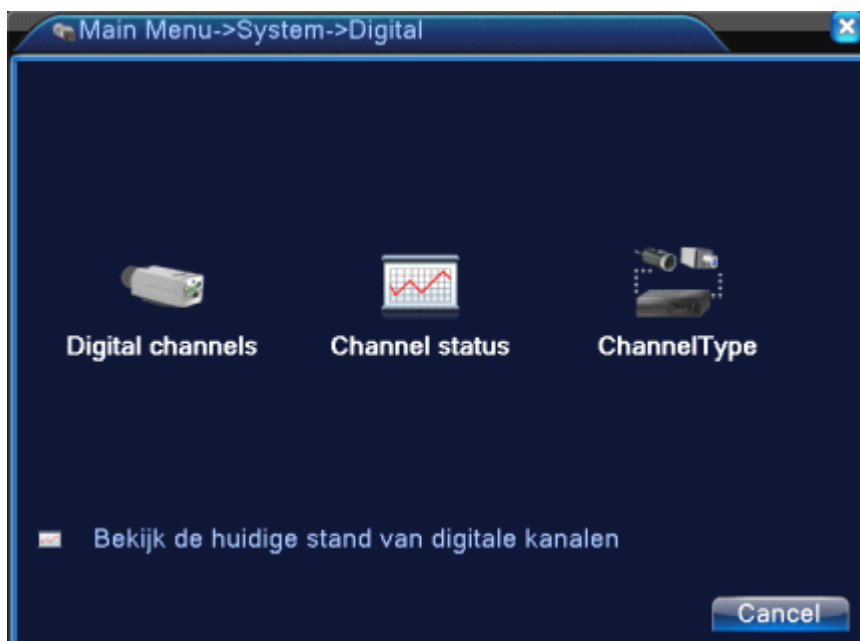
Pic 2.2.1 Network configuration

Setting the device IP and the router's in the same network segment. for example, the router's IP address is 192.168.1.1, subnet mask is 255.255.255.0, so the default setting is ok. Generally the default gateway is the same as router's IP address. Input the IP(192.18.1.10) with IE, you can login the device in the lan.

2.3 channel manage

Through [Main Menu]>[System]>[Digital]

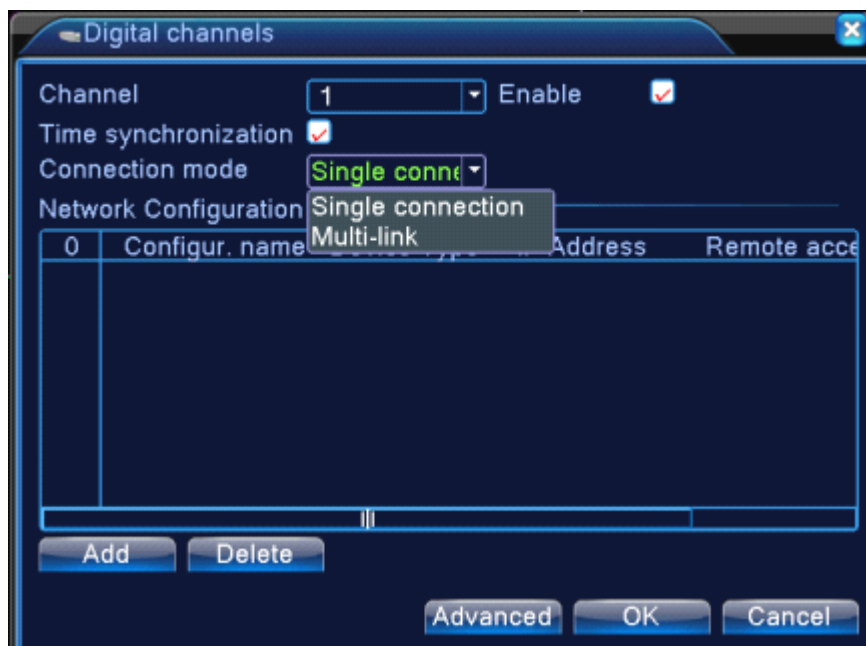
Channel manage including digital channels, channel status, and channel type (**Note: Encoder only have channel type option**):



Pic 2.3.1 The channel manage interface of decoder and professional NVR



The channel manage interface of encoder
Pic 2.3.2 channel manage interface



Pic 2.3.3 single link page and multi-link page of digital channel

【Channel】 select channel title

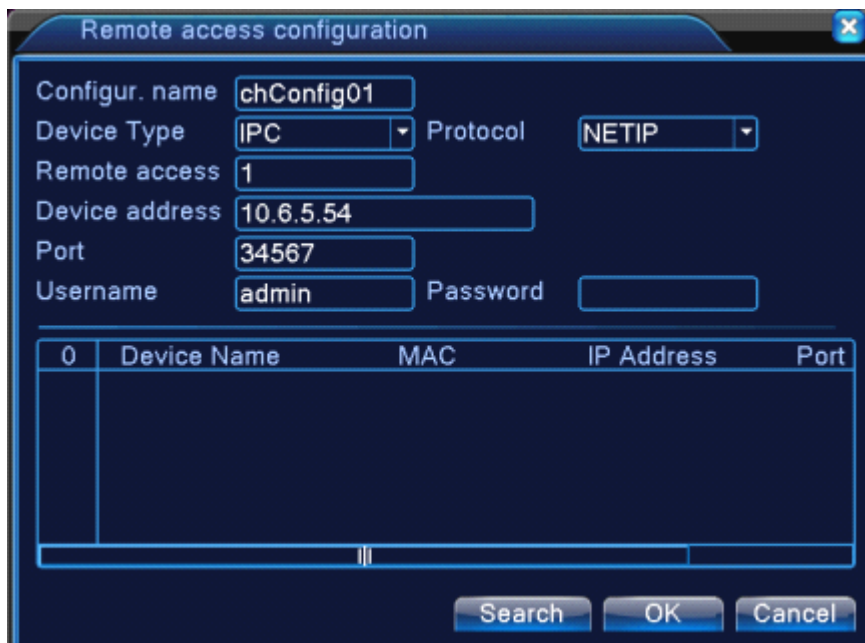
【Enable】 Open digital channel, tick enable, then can do related settings

【Time Synchronization】 Tick it means the time of this channel and device is the same.

【Connection Mode】 can be single connect or multi-ink, multi-link modes can connect to several devices, device will be tour displayed one by one, tour interval can be set, no less then 10s;

【Delete】 If the user want to change device, select the existing device, click delete will be ok.

【Add】 click add will come out below page to add new device



Pic 2.3.4 Remote channel configuration interface

【Configure Name】 device is with default configure title, user can revise it if necessary;

【Device Type】 3 types: IPC、DVR、HVR, user can choose as what you like, default is IPC;

【Protocol】 Default is TCP

【Remote channel】 User can input remote channel title from the device that you want to connect remotely

【Device address】 IP address of device.

【Port】 Default is 34567

【User name】 Default is admin

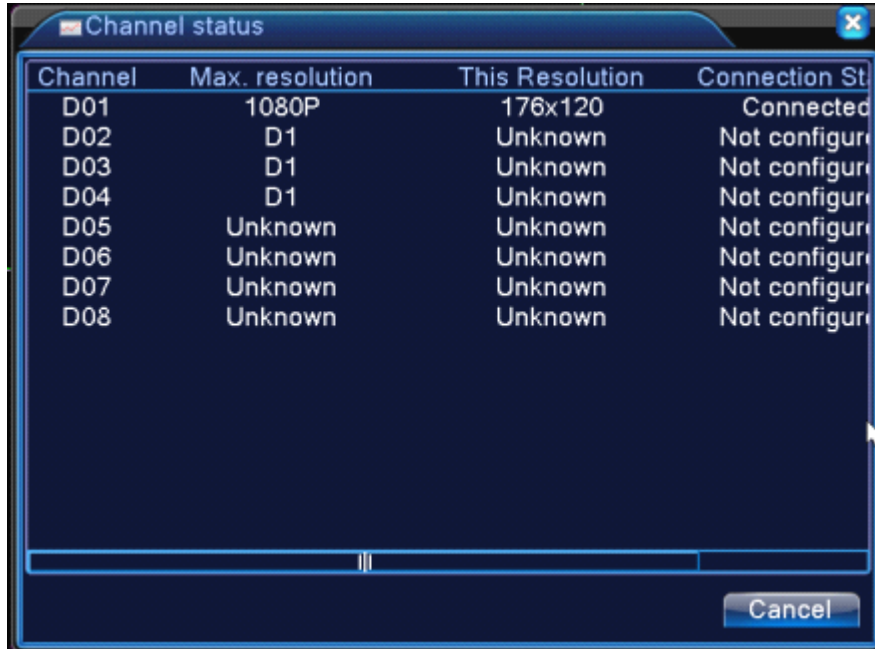
Remark: click 【search】 will show all the devices that searched out, user can choose any of the device that you like.

Channel Status:

channel status is to show the status of all the digital channel When there is what existing, status including

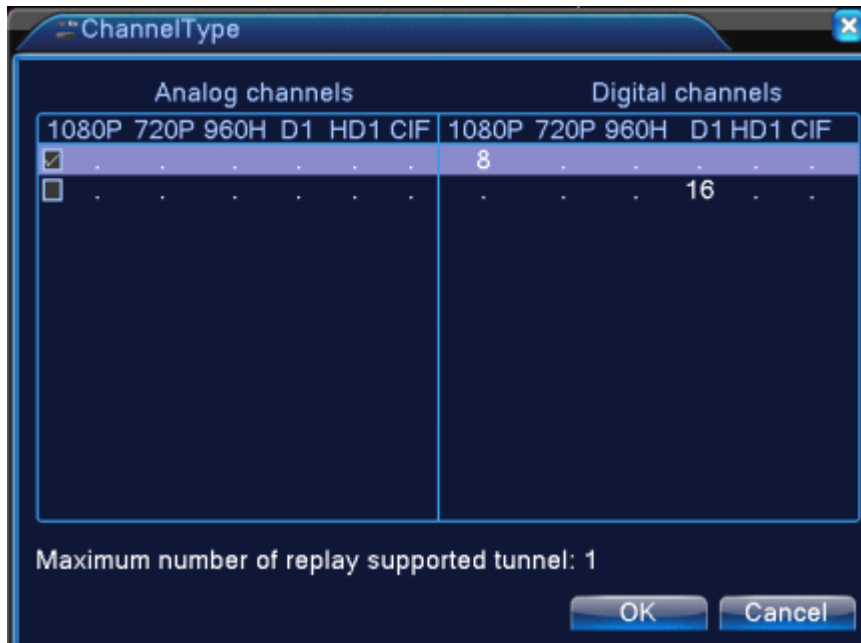
Max Resolution, This Resolution, Connection Status.

Channel status:



Pic 2.3.5 channel status

Channel type:



Pic 2.3.6 channel type

Note: Encoder only support two all analog (DVR)type,1*1080P+3*960H/D1
HD decoder only support one digital type,1*1080P
Different professional NVR model can support different type.

2.4 Preview

You can right click mouse to choose the switch between the windows.

The system date, time and channel name are shown in each viewing window. The surveillance video and the alarm status are shown in each window.





1		Video loss	3		Motion detect
2		Camera lock	4		Video bind

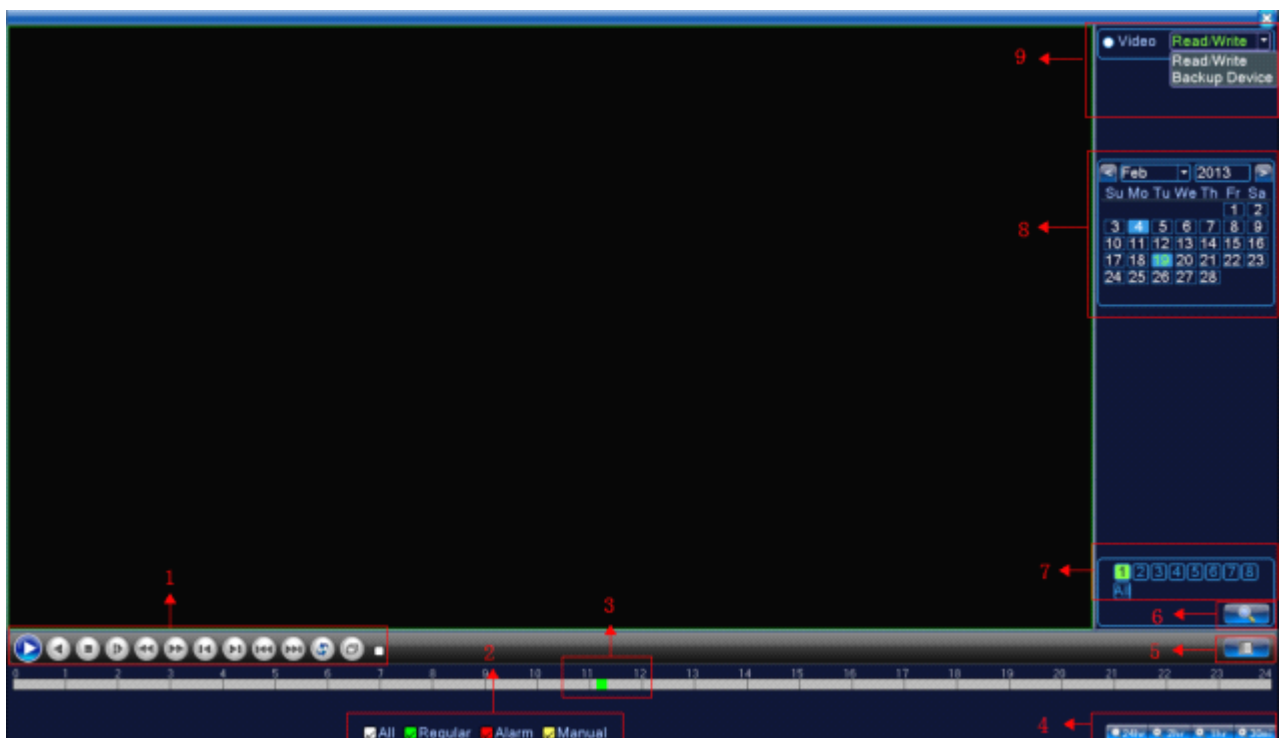
Table 2.4 Preview icon

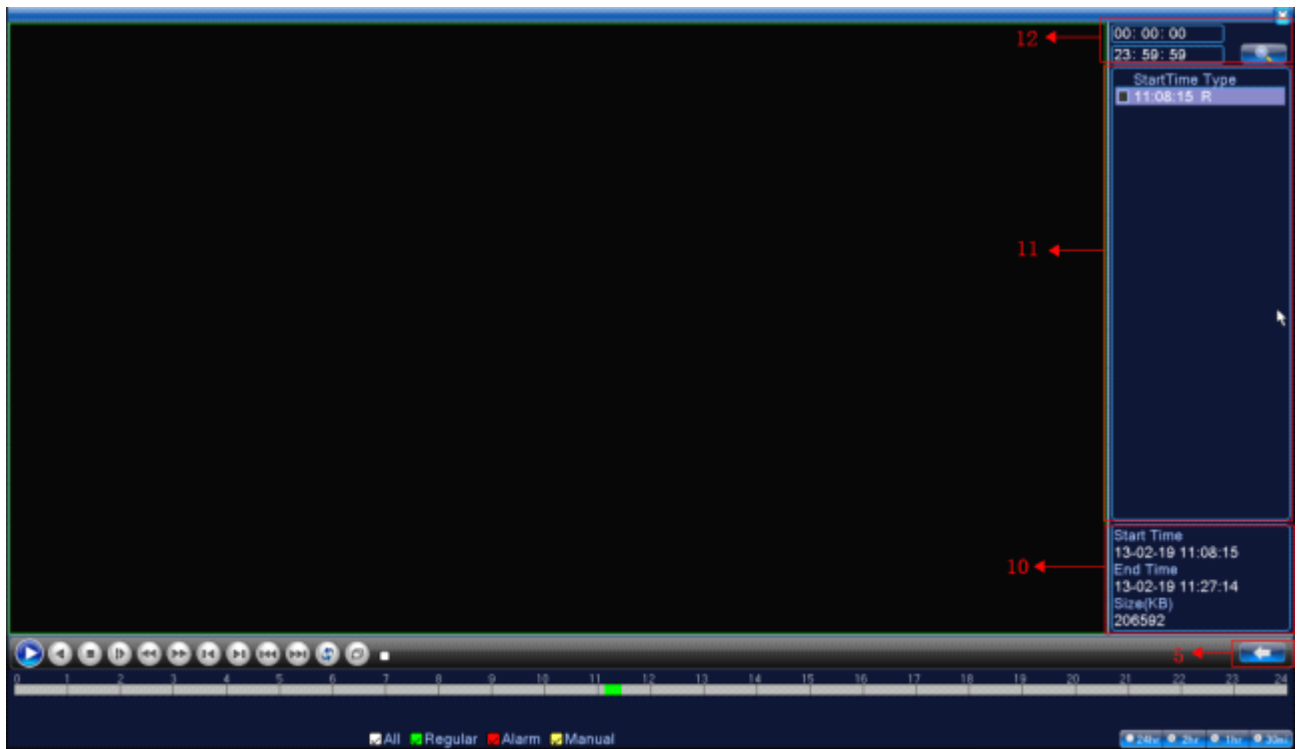
2.5 Video Playback

There are two methods for you to play the video files in the hard disk

- 1.in the desktop shortcut menu
- 2.Main Menu>Record>playback

Note: The hard disk that saves the video files must be set as read-write or read-only state.





Pic 2.5.1 playback interface

1	Playback control	2	Video mode	3	Time progress bar	4	Time interval choosing
5	Switch by time, file mode	6	File searching	7	Channel choosing	8	Date choosing
9	Storage device choosing	10	File information	11	Listed files	12	Time searching

【Listed files】 Look up the listed files that accord with the searching criteria.

【File information】 Look up the found file information.

【Playback control】 See detail in below chart

Key	Function	Key	Function
	Play/Pause		Backward play
	Slow forward		Fast forward
	Previous frame		Next frame
	Previous file		Next file





	Round play		Full screen
	Stop		

Table 2.5 Playback control key

Note: play under frame by frame, the playback status should be paused firstly.

【Operation tips】 show function of the key that cursor placed.

Special function:

Accurate playback: Input time (h/m/s) in the time column and then click play  button. The system can operate accurate playback according to the searching time.

Local zoom: When the system is in single-window full-screen playback mode, you can drag your mouse in the screen to select a section and then left click mouse to realize local zoom. You can right click mouse to exit.

Note: When current resolution of the channel is over Max resolution, to playback this channel, will show a Red “X”.