The image shows a collection of Romicron boring system components. On the left is a small, cylindrical tool holder. In the center is a larger, white, cylindrical boring head with a dial on top. To the right of the head is a large, silver, cylindrical boring bar with a long, thin, dark-colored cutting tool bit protruding from its top. Below the bar are several smaller, silver, cylindrical boring bars of varying lengths, each with a similar dark-colored cutting tool bit. The components are arranged on a yellow rectangular surface, which is set against a background of a black and white checkered pattern.

RomicronTM Boring System

Fast

Adjustments can be made in less than 5 seconds, while still holding 0,002mm (.0001") on the diameter!

Accurate

Each click of the dial is 0,001mm (.000040") on the radius and can be done in less than 5 seconds.

This high-performance boring system will give you:

- More uptime.
- Less scrap.
- Longer tool life.
- CPKs greater than 1.33.
- Less stress during adjustments.

NOTE: For Romicron boring systems, see the Kennametal Innovations Master Catalog Cutting Tools 2013.

Experience the advantages at your Authorized Kennametal Distributor or at www.kennametal.com.

www.kennametal.com

 **KENNAMETAL[®]**

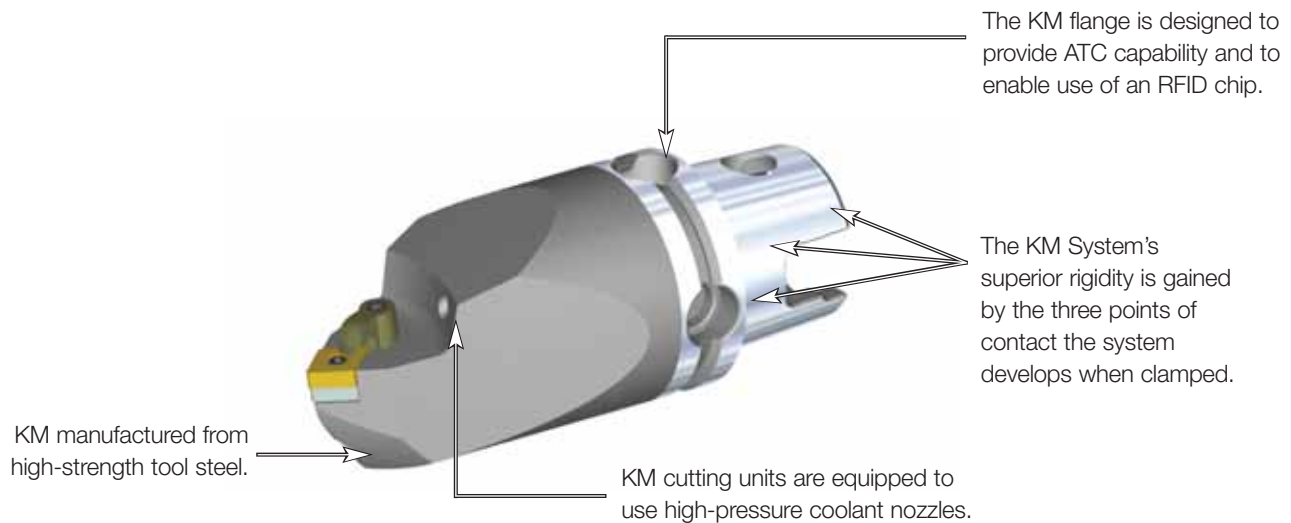
KM™ Quick Change Clamping System • KM63TS™ Series

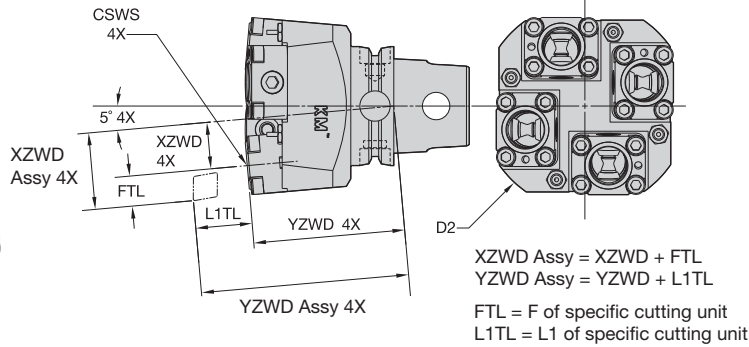
Primary Application

The KM Quick Change Clamping System is the best system on the market suitable for static, rotating, and multitasking operations. With its industry-leading design, the KM Quick Change System provides greater clamping forces than other quick-change systems. The KM Quick Change System gives you the flexibility to use KM on any application within your shop.

Features and Benefits

- KM is an ISO standard (ISO 26622).
- KM clamping units provide a 4:1 mechanical advantage.
- KM cutting units are capable of 100 bar (1,500 psi) coolant pressure.







Left-Hand Tool

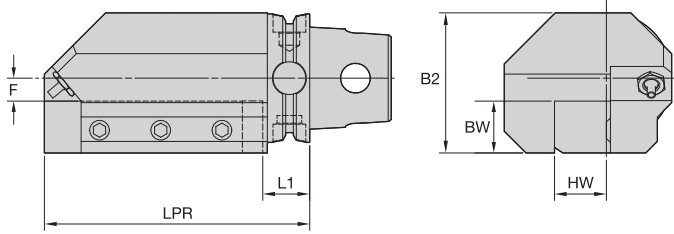
■ 4xSTAL • KM25

| order number | catalog number | CSWS system size | XZWD | | YZWD | | Nm | kg |
|--------------|-------------------------------|---------------------|------|----|-------|----|-------|---------|
| | | | D2 | mm | in | mm | | |
| 2614688 | left hand KM63TS4XSTALKM25 | KM25 | 110 | 25 | .9697 | 80 | 3.150 | 34 3,11 |

■ Spare Parts

| catalog number | nozzle | flange clamping unit | KM spare parts package |
|-------------------------------|--|---|---------------------------|
| left hand KM63TS4XSTALKM25 |  PMT08420 COOLANT NOZZLE SPRAY |  KM25NCMSF3140MST | KM3225NRPKG |

NOTE: For torque wrench, see pages L52–L53.



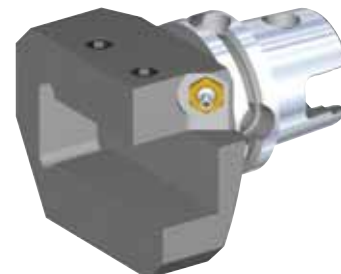
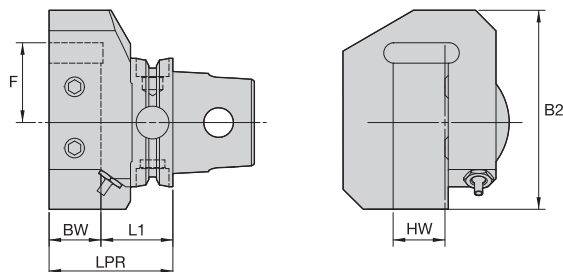
■ STAR/L • Metric

| order number | catalog number | B2 | BW | F | HW | L1 | LPR | nozzle | kg |
|--------------|-----------------|----|----|----|----|----|-----|-------------------------------|------|
| | right hand | | | | | | | | |
| 2255545 | KM63TSSTAR2525M | 68 | 25 | 11 | 25 | 25 | 130 | PMT04526 COOLANT NOZZLE SPRAY | 3,83 |
| | left hand | | | | | | | | |
| 2255544 | KM63TSSTAL2525M | 68 | 25 | 11 | 25 | 25 | 130 | PMT04526 COOLANT NOZZLE SPRAY | 3,83 |



■ STAR/L • Inch

| order number | catalog number | B2 | BW | F | HW | L1 | LPR | nozzle | lbs |
|--------------|----------------|-------|-------|------|-------|------|-------|-------------------------------|------|
| | right hand | | | | | | | | |
| 2384740 | KM63TSSTAR16 | 2.703 | 1.000 | .443 | 1.000 | .906 | 5.118 | PMT04526 COOLANT NOZZLE SPRAY | 8.46 |
| | left hand | | | | | | | | |
| 2384741 | KM63TSSTAL16 | 2.703 | 1.000 | .443 | 1.000 | .906 | 5.118 | PMT04526 COOLANT NOZZLE SPRAY | 8.46 |



■ ETAR/L • Metric

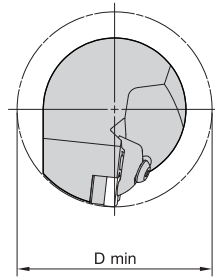
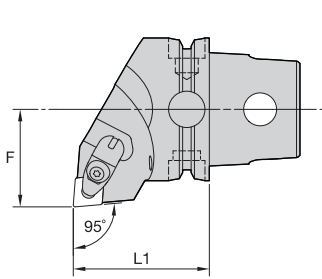


| order number | catalog number | B2 | BW | F | HW | L1 | LPR | nozzle | kg |
|--------------|-----------------|----|----|------|----|----|-----|-------------------------------|------|
| | right hand | | | | | | | | |
| 2255547 | KM63TSETAR2525M | 98 | 25 | 37,5 | 25 | 35 | 60 | PMT04526 COOLANT NOZZLE SPRAY | 2,06 |
| | left hand | | | | | | | | |
| 2255546 | KM63TSETAL2525M | 98 | 25 | 37,5 | 25 | 35 | 60 | PMT04526 COOLANT NOZZLE SPRAY | 2,06 |

■ ETAR/L • Inch




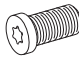


| order number | catalog number | B2 | BW | F | HW | L1 | LPR | nozzle | lbs |
|--------------|----------------|-------|-------|-------|-------|-------|-------|-------------------------------|------|
| | right hand | | | | | | | | |
| 2384742 | KM63TSETAR16 | 3.839 | 1.000 | 1.539 | 1.000 | 1.388 | 2.388 | PMT08420 COOLANT NOZZLE SPRAY | 4.58 |
| | left hand | | | | | | | | |
| 2384743 | KM63TSETAL16 | 3.839 | 1.000 | 1.539 | 1.000 | 1.388 | 2.388 | PMT08420 COOLANT NOZZLE SPRAY | 4.58 |



■ DCLN 95°

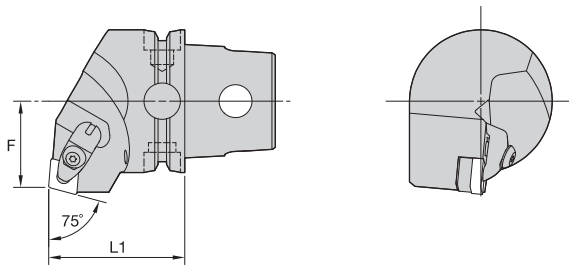
| order number | catalog number | L1 | | F | | D min | | gage insert | kg |
|--------------|-------------------|------------|-------|----|-------|-------|------|--------------------|------|
| | | mm | in | mm | in | mm | in | | |
| | | right hand | | | | | | | |
| 2252467 | KM63TSDCLNR12KC04 | 60 | 2.362 | 43 | 1.693 | 86 | 3.39 | CN..120408/CN..432 | 1,21 |
| 2265432 | KM63TSDCLNR16KC06 | 60 | 2.362 | 43 | 1.693 | — | — | CN..160612/CN..543 | 1,19 |
| | | left hand | | | | | | | |
| 2252465 | KM63TSDCLNL12KC04 | 60 | 2.362 | 43 | 1.693 | 86 | 3.39 | CN..120408/CN..432 | 1,20 |
| 2265433 | KM63TSDCLNL16KC06 | 60 | 2.362 | 43 | 1.693 | — | — | CN..160612/CN..543 | 1,19 |

■ Spare Parts

| catalog number |  shim |  shim screw |  clamp assembly |  pin |
|-------------------|--|--|--|---|
| | right hand | | | |
| KM63TSDCLNR12KC04 | ICSN443 | KMSP415IP | CM234R ASSY | SSP025016M |
| KM63TSDCLNR16KC06 | ICSN543 | KMSP515IP | CM209R ASSY | SSP025016M |
| | left hand | | | |
| KM63TSDCLNL12KC04 | ICSN443 | KMSP415IP | CM234R ASSY | SSP025016M |
| KM63TSDCLNL16KC06 | ICSN543 | KMSP515IP | CM209R ASSY | SSP025016M |


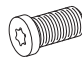




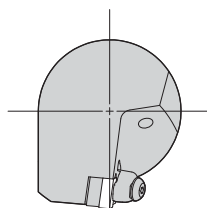
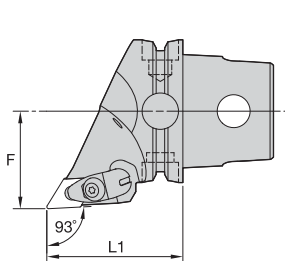
KM63TS Cutting Units


■ DCRN 75°

| order number | catalog number | L1 | | F | | gage insert | kg |
|--------------|--------------------------|----|-------|----|-------|--------------------|------|
| | | mm | in | mm | in | | |
| 2265434 | right hand | 60 | 2.362 | 38 | 1.496 | CN..120408/CN..432 | 1,26 |
| | KM63TSDCRNR12KC04 | | | | | | |
| 2265435 | left hand | 60 | 2.362 | 38 | 1.496 | CN..120408/CN..432 | 1,25 |
| | KM63TSDCRNL12KC04 | | | | | | |

■ Spare Parts


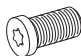


| catalog number |  shim |  shim screw |  clamp assembly |  pin |
|--|--|--|--|---|
| right hand KM63TSDCRNR12KC04 | ICSN443 | KMSP415IP | CM234R ASSY | SSP025016M |
| left hand KM63TSDCRNL12KC04 | ICSN443 | KMSP415IP | CM234R ASSY | SSP025016M |

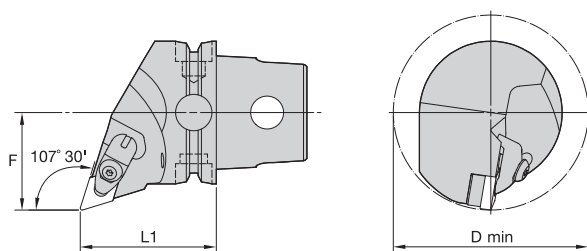


■ DDJN 93°

| order number | catalog number | L1 | | F | | gage insert | kg |
|--------------|-------------------|----|-------|----|-------|--------------------|------|
| | | mm | in | mm | in | | |
| | right hand | | | | | | |
| 2265438 | KM63TSDDJNR15KC04 | 60 | 2.362 | 43 | 1.693 | DN..150408/DN..432 | 1,03 |
| 2265436 | KM63TSDDJNR15KC06 | 60 | 2.362 | 43 | 1.693 | DN..150608/DN..442 | 1,03 |
| | left hand | | | | | | |
| 2265439 | KM63TSDDJNL15KC04 | 60 | 2.362 | 43 | 1.693 | DN..150408/DN..432 | 1,03 |
| 2265437 | KM63TSDDJNL15KC06 | 60 | 2.362 | 43 | 1.693 | DN..150608/DN..442 | 1,03 |

■ Spare Parts

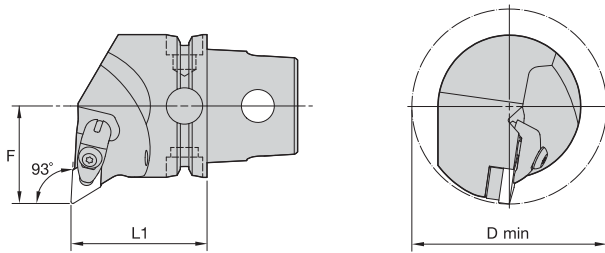
| catalog number |  shim |  shim screw |  clamp assembly |  pin |
|-------------------|--|--|--|---|
| | | | | |
| right hand | | | | |
| KM63TSDDJNR15KC04 | IDSN443 | KMSP415IP | CM234R ASSY | SSP025016M |
| KM63TSDDJNR15KC06 | IDSN433 | KMSP415IP | CM234R ASSY | SSP025016M |
| left hand | | | | |
| KM63TSDDJNL15KC04 | IDSN443 | KMSP415IP | CM234R ASSY | SSP025016M |
| KM63TSDDJNL15KC06 | IDSN433 | KMSP415IP | CM234R ASSY | SSP025016M |


■ DDQU 107° 30'

| order number | catalog number | L1 | | F | | D min | | gage insert | kg |
|--------------|-------------------|----|-------|----|-------|-------|------|--------------------|------|
| | | mm | in | mm | in | mm | in | | |
| | right hand | | | | | | | | |
| 2265440 | KM63TSDDQNR15KC04 | 60 | 2.362 | 43 | 1.693 | 86 | 3.39 | DN..150408/DN..432 | 1,11 |
| 2265442 | KM63TSDDQNR15KC06 | 60 | 2.362 | 43 | 1.693 | 86 | 3.39 | DN..150608/DN..442 | 1,11 |
| | left hand | | | | | | | | |
| 2265441 | KM63TSDDQNL15KC04 | 60 | 2.362 | 43 | 1.693 | 86 | 3.39 | DN..150408/DN..432 | 1,11 |
| 2265443 | KM63TSDDQNL15KC06 | 60 | 2.362 | 43 | 1.693 | 86 | 3.39 | DN..150608/DN..442 | 1,11 |

■ Spare Parts


| catalog number | shim | shim screw | clamp assembly | pin |
|-------------------|---------|------------|----------------|------------|
| right hand | | | | |
| KM63TSDDQNR15KC04 | IDSN443 | KMSP415IP | CM234R ASSY | SSP025016M |
| KM63TSDDQNR15KC06 | IDSN433 | KMSP415IP | CM234R ASSY | SSP025016M |
| left hand | | | | |
| KM63TSDDQNL15KC04 | IDSN443 | KMSP415IP | CM234R ASSY | SSP025016M |
| KM63TSDDQNL15KC06 | IDSN433 | KMSP415IP | CM234R ASSY | SSP025016M |



■ DDUN 93°

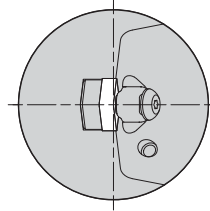
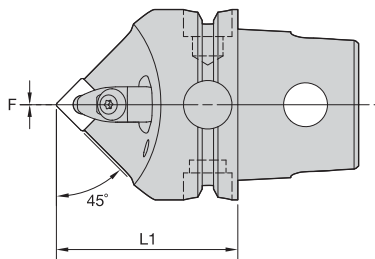
| order number | catalog number | L1 | | F | | D min | | gage insert | kg |
|--------------|-------------------|----|-------|----|-------|-------|------|--------------------|------|
| | | mm | in | mm | in | mm | in | | |
| | right hand | | | | | | | | |
| 2265444 | KM63TSDDUNR15KC04 | 60 | 2.362 | 43 | 1.693 | 86 | 3.39 | DN..150408/DN..432 | 1,25 |
| 2265446 | KM63TSDDUNR15KC06 | 60 | 2.362 | 43 | 1.693 | 86 | 3.39 | DN..150608/DN..442 | 1,27 |
| | left hand | | | | | | | | |
| 2265445 | KM63TSDDUNL15KC04 | 60 | 2.362 | 43 | 1.693 | 86 | 3.39 | DN..150408/DN..432 | 1,25 |
| 2265447 | KM63UTDDUNL15KC06 | 60 | 2.362 | 43 | 1.693 | 86 | 3.39 | DN..150608/DN..442 | 1,27 |

■ Spare Parts

| catalog number | shim | shim screw | clamp assembly | pin |
|-------------------|---------|------------|----------------|------------|
| right hand | | | | |
| KM63TSDDUNR15KC04 | IDSN443 | KMSP415IP | CM234R ASSY | SSP025016M |
| KM63TSDDUNR15KC06 | IDSN433 | KMSP415IP | CM234R ASSY | SSP025016M |
| left hand | | | | |
| KM63TSDDUNL15KC04 | IDSN443 | KMSP415IP | CM234R ASSY | SSP025016M |
| KM63UTDDUNL15KC06 | IDSN433 | KMSP415IP | CM234R ASSY | SSP025016M |



KM63TS Cutting Units

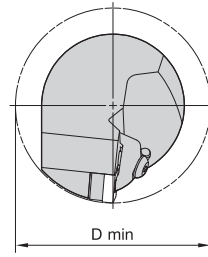
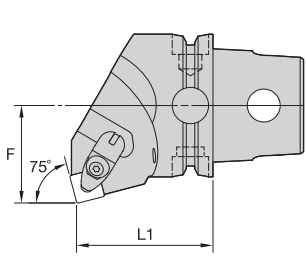


■ DSDN 45°

| order number | catalog number | L1 | | F | | gage insert | kg |
|--------------|-------------------|----|-------|----|------|--------------------|------|
| | | mm | in | mm | in | | |
| 2265448 | KM63TSDSDNN12KC04 | 60 | 2.362 | 0 | .000 | SN..120408/SN..432 | 1,05 |

■ Spare Parts

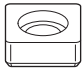
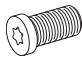


| catalog number | shim | shim screw | clamp assembly | pin |
|-------------------|---------|------------|----------------|------------|
| KM63TSDSDNN12KC04 | ISSN443 | KMSP415IP | CM234R ASSY | SSP025016M |



■ DSKN 75°

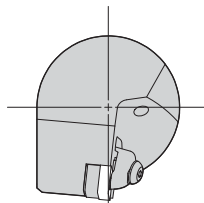
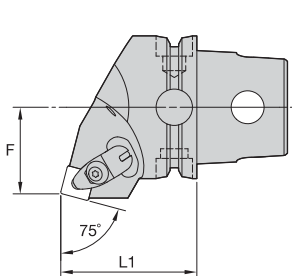
| order number | catalog number | L1 | | F | | D min | | gage insert | kg |
|--------------|-------------------|----|-------|----|-------|-------|------|--------------------|-----|
| | | mm | in | mm | in | mm | in | | |
| | right hand | | | | | | | | |
| 2265449 | KM63TSDSKNR12KC04 | 60 | 2.362 | 43 | 1.693 | 86 | 3.39 | SN..120408/SN..432 | 1,3 |
| | left hand | | | | | | | | |
| 2265450 | KM63TSDSKNL12KC04 | 60 | 2.362 | 43 | 1.693 | 86 | 3.39 | SN..120408/SN..432 | 1,3 |

■ Spare Parts

| catalog number |  shim |  shim screw |  clamp assembly |  pin |
|-------------------|--|--|--|---|
| right hand | | | | |
| KM63TSDSKNR12KC04 | ISSN443 | KMSP415IP | CM234R ASSY | SSP025016M |
| left hand | | | | |
| KM63TSDSKNL12KC04 | ISSN443 | KMSP415IP | CM234R ASSY | SSP025016M |



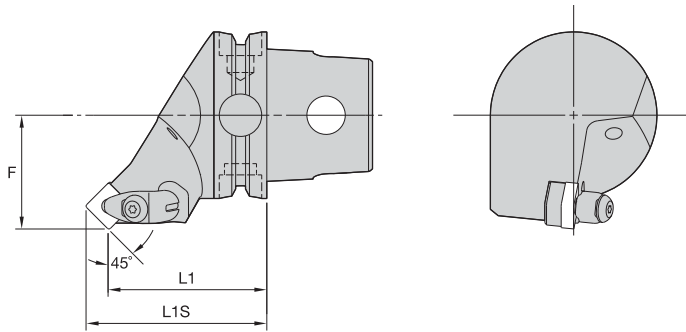
KM63TS Cutting Units


■ DSRN 75°

| order number | catalog number | L1 | | F | | gage insert | kg |
|--------------|--------------------------|----|-------|----|-------|--------------------|------|
| | | mm | in | mm | in | | |
| 2265451 | right hand | 60 | 2.362 | 38 | 1.496 | SN..120408/SN..432 | 1,21 |
| | KM63TSDSRNR12KC04 | | | | | | |
| 2265452 | left hand | 60 | 2.362 | 38 | 1.496 | SN..120408/SN..432 | 1,21 |
| | KM63TSDSRNL12KC04 | | | | | | |

■ Spare Parts

| catalog number | | | | |
|--|---------|------------|----------------|------------|
| | shim | shim screw | clamp assembly | pin |
| right hand KM63TSDSRNR12KC04 | ISSN443 | KMSP415IP | CM234R ASSY | SSP025016M |
| left hand KM63TSDSRNL12KC04 | ISSN443 | KMSP415IP | CM234R ASSY | SSP025016M |

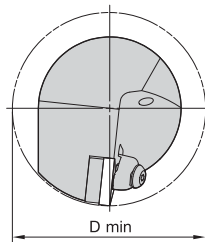
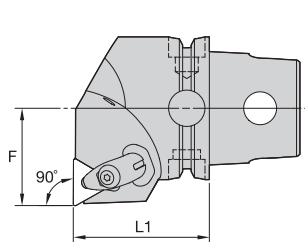


■ DSSN 45°

| order number | catalog number | L1 | | L1S | | F | | gage insert | kg |
|--------------|--------------------------|----|-------|------|-------|----|-------|--------------------|------|
| | | mm | in | mm | in | mm | in | | |
| 2265453 | right hand | 60 | 2.362 | 68,3 | 2.690 | 43 | 1.693 | SN..120408/SN..432 | 1,15 |
| | KM63TSDSSNR12KC04 | | | | | | | | |
| 2265454 | left hand | 60 | 2.362 | 68,3 | 2.690 | 43 | 1.693 | SN..120408/SN..432 | 1,15 |
| | KM63TSDSSNL12KC04 | | | | | | | | |


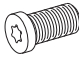


■ Spare Parts

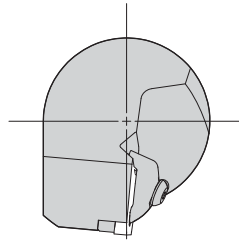
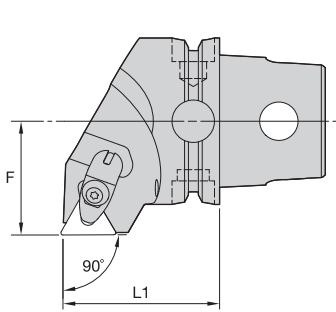
| catalog number | shim | shim screw | clamp assembly | pin |
|--|---------|------------|----------------|------------|
| right hand KM63TSDSSNR12KC04 | ISSN443 | KMSP415IP | CM234R ASSY | SSP025016M |
| left hand KM63TSDSSNL12KC04 | ISSN443 | KMSP415IP | CM234R ASSY | SSP025016M |


DTFN 90°

| order number | catalog number | L1 | | F | | D min | | gage insert | kg |
|--------------|-------------------|----|-------|----|-------|-------|------|--------------------|-----|
| | | mm | in | mm | in | mm | in | | |
| | right hand | | | | | | | | |
| 2265455 | KM63TSDTFNR22KC04 | 60 | 2.362 | 43 | 1.693 | 86 | 3.39 | TN..220408/TN..432 | 1,4 |
| | left hand | | | | | | | | |
| 2265456 | KM63TSDTFNL22KC04 | 60 | 2.362 | 43 | 1.693 | 86 | 3.39 | TN..220408/TN..432 | 1,4 |

Spare Parts


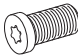


| catalog number |  shim |  shim screw |  clamp assembly |  pin |
|-------------------|--|--|--|---|
| right hand | | | | |
| KM63TSDTFNR22KC04 | ITSN443 | KMSP415IP | CM234R ASSY | SSP025016M |
| left hand | | | | |
| KM63TSDTFNL22KC04 | ITSN443 | KMSP415IP | CM234R ASSY | SSP025016M |

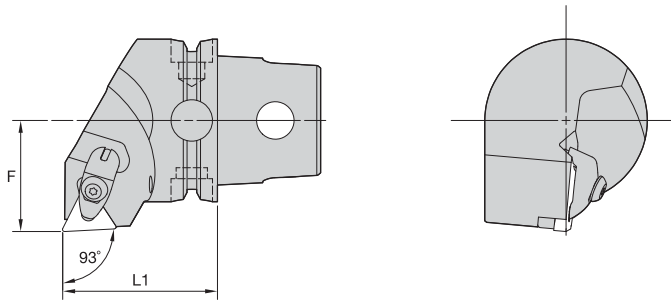


■ DTGN 90°

| order number | catalog number | L1 | | F | | gage insert | kg |
|--------------|-------------------|----|-------|----|-------|--------------------|------|
| | | mm | in | mm | in | | |
| 2265457 | right hand | 60 | 2.362 | 43 | 1.693 | TN..220408/TN..432 | 1,23 |
| | KM63TSDTGNR22KC04 | | | | | | |
| 2265458 | left hand | 60 | 2.362 | 43 | 1.693 | TN..220408/TN..432 | 1,23 |
| | KM63TSDTGNL22KC04 | | | | | | |

■ Spare Parts

| catalog number |  shim |  shim screw |  clamp assembly |  pin |
|---------------------------------|--|--|--|---|
| right hand KM63TSDTGNR22KC04 | ITSN443 | KMSP415IP | CM234R ASSY | SSP025016M |
| left hand KM63TSDTGNL22KC04 | ITSN443 | KMSP415IP | CM234R ASSY | SSP025016M |

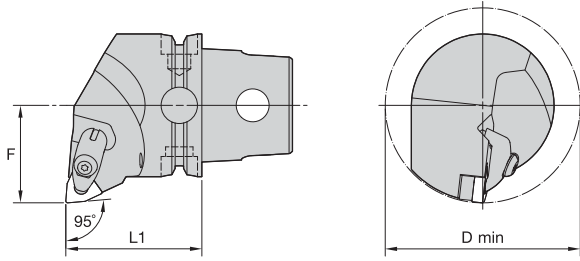


■ DTJN 93°

| order number | catalog number | L1 | | F | | gage insert | kg |
|--------------|-------------------|----|-------|----|-------|--------------------|------|
| | | mm | in | mm | in | | |
| 2265459 | right hand | 60 | 2.362 | 43 | 1.693 | TN..220408/TN..432 | 1,26 |
| | KM63TSDTJNR22KC04 | | | | | | |
| 2265460 | left hand | 60 | 2.362 | 43 | 1.693 | TN..220408/TN..432 | 1,26 |
| | KM63TSDTJNL22KC04 | | | | | | |

■ Spare Parts

| catalog number | shim | shim screw | clamp assembly | pin |
|---------------------------------|---------|------------|----------------|------------|
| right hand KM63TSDTJNR22KC04 | ITSN443 | KMSP415IP | CM234R ASSY | SSP025016M |
| left hand KM63TSDTJNL22KC04 | ITSN443 | KMSP415IP | CM234R ASSY | SSP025016M |

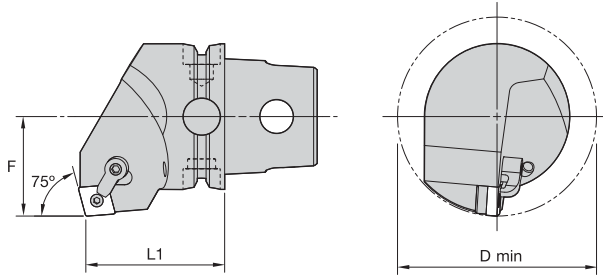


■ DWLN 95°

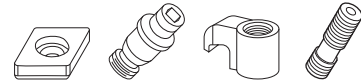
| order number | catalog number | L1 | | F | | D min | | gage insert | kg |
|--------------|--------------------|----|-------|----|-------|-------|------|--------------------|------|
| | | mm | in | mm | in | mm | in | | |
| 2265461 | right hand | 60 | 2.362 | 43 | 1.693 | 86 | 3.39 | WN..080408/WN..432 | 1,27 |
| | KM63TSDWLN R08KC04 | | | | | | | | |
| 2265462 | left hand | 60 | 2.362 | 43 | 1.693 | 86 | 3.39 | WN..080408/WN..432 | 1,27 |
| | KM63TSDWLN L08KC04 | | | | | | | | |

■ Spare Parts

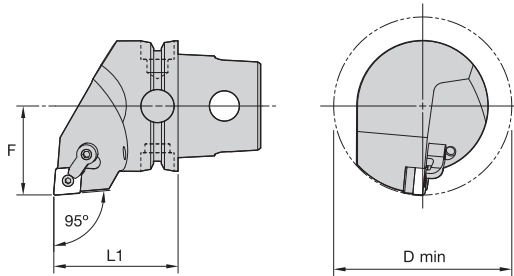
| catalog number | shim | shim screw | clamp assembly | pin |
|----------------------------------|---------|------------|----------------|------------|
| right hand KM63TSDWLN R08KC04 | IWSN443 | KMSP415IP | CM234R ASSY | SSP025016M |
| left hand KM63TSDWLN L08KC04 | IWSN443 | KMSP415IP | CM234R ASSY | SSP025016M |



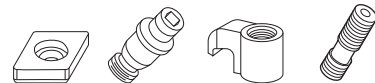
■ MCKN 75°



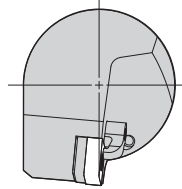
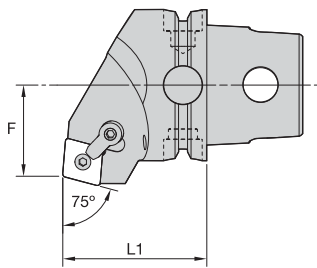
| order number | catalog number | L1 | | F | | D min | | gage insert | shim | lock pin | clamp | clamp screw | kg | lbs |
|-------------------|----------------|----|-------|----|-------|-------|-------|--------------------|---------|----------|-------|-------------|------|------|
| | | mm | in | mm | in | mm | in | | | | | | | |
| right hand | | | | | | | | | | | | | | |
| 2265024 | KM63TSMCKNR12 | 60 | 2.362 | 43 | 1.693 | 86 | 3.386 | CN..120408/CN..432 | ICSN432 | KLM46 | CKM20 | STCM11 | 1,28 | 2.83 |
| 2265026 | KM63TSMCKNR16 | 60 | 2.362 | 43 | 1.693 | 86 | 3.386 | CN..160612/CN..543 | ICSN533 | KLM58 | CKM20 | STCM11 | 1,34 | 2.95 |
| 2265028 | KM63TSMCKNR19 | 60 | 2.362 | 43 | 1.693 | 86 | 3.386 | CN..190612/CN..643 | ICSN633 | KLM68 | CKM13 | STCM8 | 1,34 | 2.95 |
| left hand | | | | | | | | | | | | | | |
| 2265025 | KM63TSMCKNL12 | 60 | 2.362 | 43 | 1.693 | 86 | 3.386 | CN..120408/CN..432 | ICSN432 | KLM46 | CKM20 | STCM11 | 1,28 | 2.83 |
| 2265027 | KM63TSMCKNL16 | 60 | 2.362 | 43 | 1.693 | 86 | 3.386 | CN..160612/CN..543 | ICSN533 | KLM58 | CKM20 | STCM11 | 1,34 | 2.95 |
| 2265029 | KM63TSMCKNL19 | 60 | 2.362 | 43 | 1.693 | 86 | 3.386 | CN..190612/CN..643 | ICSN633 | KLM68 | CKM13 | STCM8 | 1,34 | 2.95 |



■ MCLN 95°



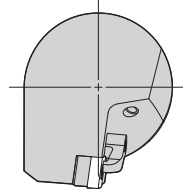
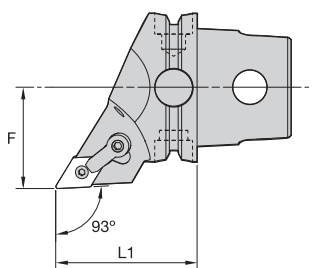
| order number | catalog number | L1 | | F | | D min | | gage insert | shim | lock pin | clamp | clamp screw | kg | lbs |
|-------------------|----------------|----|-------|----|-------|-------|-------|--------------------|---------|----------|-------|-------------|------|------|
| | | mm | in | mm | in | mm | in | | | | | | | |
| right hand | | | | | | | | | | | | | | |
| 2265030 | KM63TSMCLNR12 | 60 | 2.362 | 43 | 1.693 | 86 | 3.386 | CN..120408/CN..432 | ICSN432 | KLM46 | CKM20 | STCM11 | 1,19 | 2.62 |
| 2265032 | KM63TSMCLNR16 | 60 | 2.362 | 43 | 1.693 | 86 | 3.386 | CN..160612/CN..543 | ICSN533 | KLM58 | CKM20 | STCM11 | 1,19 | 2.62 |
| 2265274 | KM63TSMCLNR19 | 60 | 2.362 | 43 | 1.693 | 86 | 3.386 | CN..190612/CN..643 | ICSN633 | KLM68 | CKM13 | STCM8 | 1,18 | 2.61 |
| left hand | | | | | | | | | | | | | | |
| 2265031 | KM63TSMCLNL12 | 60 | 2.362 | 43 | 1.693 | 86 | 3.386 | CN..120408/CN..432 | ICSN432 | KLM46 | CKM20 | STCM11 | 1,19 | 2.62 |
| 2265273 | KM63TSMCLNL16 | 60 | 2.362 | 43 | 1.693 | 86 | 3.386 | CN..160612/CN..543 | ICSN533 | KLM58 | CKM20 | STCM11 | 1,19 | 2.62 |
| 2265275 | KM63TSMCLNL19 | 60 | 2.362 | 43 | 1.693 | 86 | 3.386 | CN..190612/CN..643 | ICSN633 | KLM68 | CKM13 | STCM8 | 1,18 | 2.61 |



■ MCRN 75°



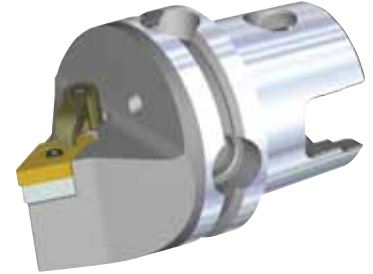
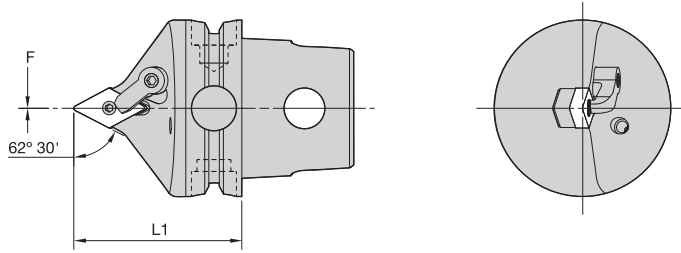
| order number | catalog number | L1 | | F | | gage insert | shim | lock pin | clamp | clamp screw | kg | lbs |
|--------------|----------------|------------|-------|----|-------|--------------------|---------|----------|-------|-------------|------|------|
| | | mm | in | mm | in | | | | | | | |
| | | right hand | | | | | | | | | | |
| 2265276 | KM63TSMCRNR16 | 60 | 2.362 | 38 | 1.496 | CN..160612/CN..543 | ICSN533 | KLM58 | CKM20 | STCM11 | 1,19 | 2.63 |
| 2265278 | KM63TSMCRNR19 | 60 | 2.362 | 38 | 1.496 | CN..190612/CN..643 | ICSN633 | KLM68 | CKM13 | STCM8 | 1,19 | 2.62 |
| | | left hand | | | | | | | | | | |
| 2265277 | KM63TSMCRNL16 | 60 | 2.362 | 38 | 1.496 | CN..160612/CN..543 | ICSN533 | KLM58 | CKM20 | STCM11 | 1,19 | 2.63 |
| 2265279 | KM63TSMCRNL19 | 60 | 2.362 | 38 | 1.496 | CN..190612/CN..643 | ICSN633 | KLM68 | CKM13 | STCM8 | 1,19 | 2.62 |



■ MDJN 93°



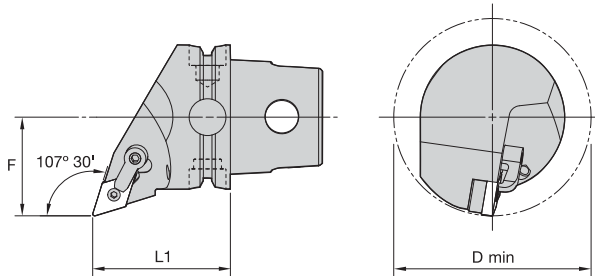
| order number | catalog number | L1 | | F | | gage insert | shim | lock pin | clamp | clamp screw | kg | lbs |
|--------------|-----------------|------------|-------|----|-------|--------------------|---------|----------|-------|-------------|------|-------|
| | | mm | in | mm | in | | | | | | | |
| | | right hand | | | | | | | | | | |
| 2397712 | KM63TSMDJNR1504 | 60 | 2.362 | 43 | 1.693 | DN..150408/DN..432 | IDSN442 | KLM46L | CKM23 | STCM11 | 1,00 | 2.200 |
| 2265280 | KM63TSMDJNR1506 | 60 | 2.362 | 43 | 1.693 | DN..150608/DN..442 | IDSN432 | KLM46L | CKM23 | STCM11 | 0,99 | 2.190 |
| | | left hand | | | | | | | | | | |
| 2397713 | KM63TSMDJNL1504 | 60 | 2.362 | 43 | 1.693 | DN..150408/DN..432 | IDSN442 | KLM46L | CKM23 | STCM11 | 1,00 | 2.200 |
| 2265281 | KM63TSMDJNL1506 | 60 | 2.362 | 43 | 1.693 | DN..150608/DN..442 | IDSN432 | KLM46L | CKM23 | STCM11 | 0,99 | 2.190 |



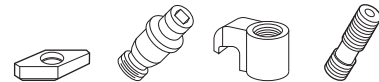
■ MDPN 62° 30'



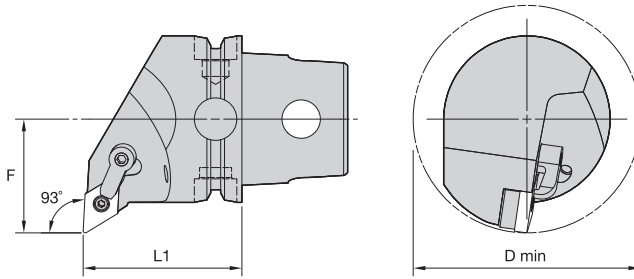
| order number | catalog number | L1 | | F | | gage insert | shim | lock pin | clamp | clamp screw | kg | lbs |
|--------------|------------------|----|-------|----|------|--------------------|---------|----------|-------|-------------|------|------|
| | | mm | in | mm | in | | | | | | | |
| 2397714 | KM63TSM DPNN1504 | 60 | 2.362 | 0 | .000 | DN..150408/DN..432 | IDSN442 | KLM46L | CKM23 | STCM11 | 0,92 | 2.02 |
| 2265282 | KM63TSM DPNN1506 | 60 | 2.362 | 0 | .000 | DN..150608/DN..442 | IDSN432 | KLM46L | CKM23 | STCM11 | 0,92 | 2.01 |



■ MDQN 107° 30'



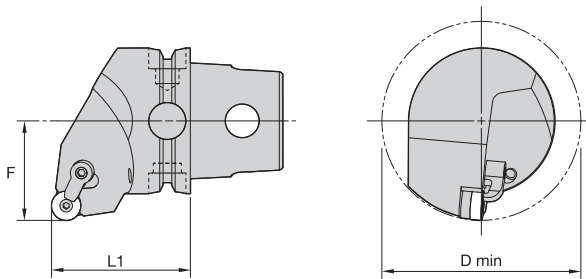
| order number | catalog number | L1 | | F | | D min | | gage insert | shim | lock pin | clamp | clamp screw | kg | lbs |
|--------------|------------------|----|-------|----|-------|-------|-------|--------------------|---------|----------|-------|-------------|------|------|
| | | mm | in | mm | in | mm | in | | | | | | | |
| right hand | | | | | | | | | | | | | | |
| 2397715 | KM63TSM DQNR1504 | 60 | 2.362 | 43 | 1.693 | 86 | 3.386 | DN..150408/DN..432 | IDSN442 | KLM46L | CKM23 | STCM11 | 1,07 | 2.36 |
| 2265283 | KM63TSM DQNR1506 | 60 | 2.362 | 43 | 1.693 | 86 | 3.386 | DN..150608/DN..442 | IDSN432 | KLM46L | CKM23 | STCM11 | 1,07 | 2.35 |
| left hand | | | | | | | | | | | | | | |
| 2397716 | KM63TSM DQNL1504 | 60 | 2.362 | 43 | 1.693 | 86 | 3.386 | DN..150408/DN..432 | IDSN442 | KLM46 | CKM23 | STCM11 | 1,07 | 2.36 |
| 2265284 | KM63TSM DQNL1506 | 60 | 2.362 | 43 | 1.693 | 86 | 3.386 | DN..150608/DN..442 | IDSN432 | KLM46L | CKM23 | STCM11 | 1,07 | 2.35 |



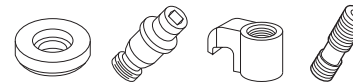
■ MDUN 93°



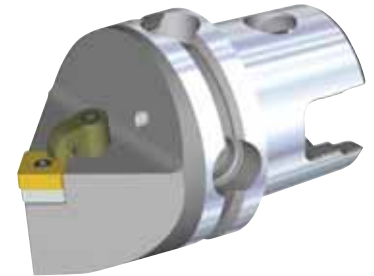
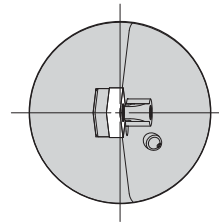
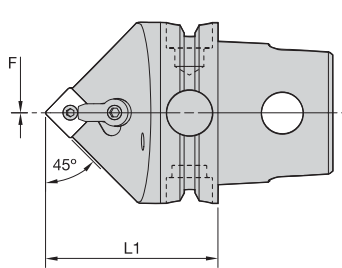
| order number | catalog number | L1 | | F | | D min | | gage insert | shim | lock pin | clamp | clamp screw | kg | lbs |
|-------------------|------------------|----|-------|----|-------|-------|-------|--------------------|---------|----------|-------|-------------|------|------|
| | | mm | in | mm | in | mm | in | | | | | | | |
| right hand | | | | | | | | | | | | | | |
| 2397717 | KM63TSM DUNR1504 | 60 | 2.362 | 43 | 1.693 | 86 | 3.386 | DN..150408/DN..432 | IDSN442 | KLM46L | CKM23 | STCM11 | 1,17 | 2.58 |
| 2265285 | KM63TSM DUNR1506 | 60 | 2.362 | 43 | 1.693 | 86 | 3.386 | DN..150608/DN..442 | IDSN432 | KLM46L | CKM23 | STCM11 | 1,17 | 2.58 |
| left hand | | | | | | | | | | | | | | |
| 2397718 | KM63TSM DUNL1504 | 60 | 2.362 | 43 | 1.693 | 86 | 3.386 | DN..150408/DN..432 | IDSN442 | KLM46L | CKM23 | STCM11 | 1,17 | 2.58 |
| 2265286 | KM63TSM DUNL1506 | 60 | 2.362 | 43 | 1.693 | 86 | 3.386 | DN..150608/DN..442 | IDSN432 | KLM46L | CKM23 | STCM11 | 1,17 | 2.57 |



■ MRGN 0°



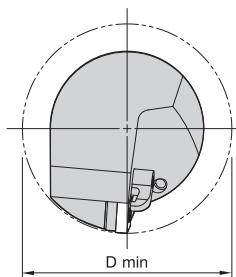
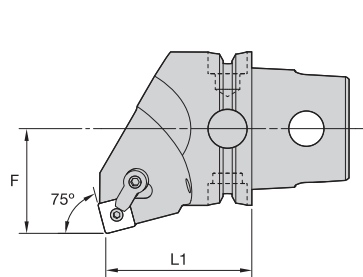
| order number | catalog number | L1 | | F | | D min | | gage insert | shim | lock pin | clamp | clamp screw | kg | lbs |
|-------------------|----------------|----|-------|----|-------|-------|-------|-------------------|--------|----------|-------|-------------|------|------|
| | | mm | in | mm | in | mm | in | | | | | | | |
| right hand | | | | | | | | | | | | | | |
| 2265287 | KM63TSM RGNR12 | 60 | 2.362 | 43 | 1.693 | 100 | 3.937 | RN..120400/RN..43 | IRSN43 | KLM46 | CKM20 | STCM11 | 1,21 | 2.66 |
| left hand | | | | | | | | | | | | | | |
| 2265288 | KM63TSM RGNL12 | 60 | 2.362 | 43 | 1.693 | 100 | 3.937 | RN..120400/RN..43 | IRSN43 | KLM46 | CKM20 | STCM11 | 1,21 | 2.66 |



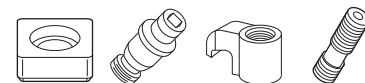
■ MSDN 45°



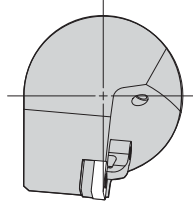
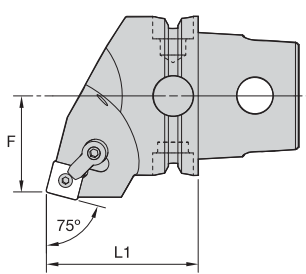
| order number | catalog number | L1 | | F | | gage insert | shim | lock pin | clamp | clamp screw | kg | lbs |
|--------------|----------------|----|-------|----|------|--------------------|---------|----------|-------|-------------|------|------|
| | | mm | in | mm | in | | | | | | | |
| 2265289 | KM63TSMDDNN12 | 60 | 2.362 | 0 | .000 | SN..120408/SN..432 | ISSN432 | KLM46 | CKM20 | STCM11 | 0,99 | 2.18 |
| 2265290 | KM63TSMDDNN15 | 60 | 2.362 | 0 | .000 | SN..150612/SN..543 | ISSN533 | KLM58 | CKM20 | STCM11 | 0,99 | 2.18 |
| 2265291 | KM63TSMDDNN19 | 60 | 2.362 | 0 | .000 | SN..190612/SN..643 | ISSN633 | KLM68 | CKM13 | STCM8 | 0,97 | 2.14 |



■ MSKN 75°



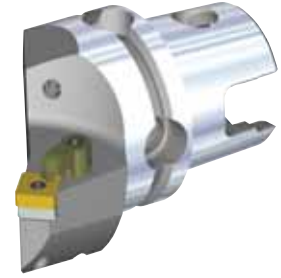
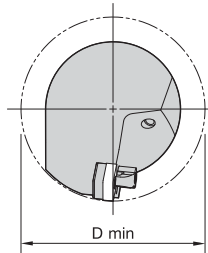
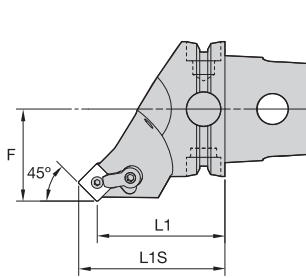
| order number | catalog number | L1 | | F | | D min | | gage insert | shim | lock pin | clamp | clamp screw | kg | lbs |
|--------------|----------------|----|-------|----|-------|-------|-------|--------------------|---------|----------|-------|-------------|------|------|
| | | mm | in | mm | in | mm | in | | | | | | | |
| 2265292 | KM63TSMKSKNR12 | 60 | 2.362 | 43 | 1.693 | 86 | 3.386 | SN..120408/SN..432 | ISSN432 | KLM46 | CKM20 | STCM11 | 1,27 | 2.81 |
| 2265294 | KM63TSMKSKNR19 | 60 | 2.362 | 43 | 1.693 | 86 | 3.386 | SN..190612/SN..643 | ISSN633 | KLM68 | CKM13 | STCM8 | 1,35 | 2.97 |
| 2265293 | KM63TSMKSKNL12 | 60 | 2.362 | 43 | 1.693 | 86 | 3.386 | SN..120408/SN..432 | ISSN432 | KLM46 | CKM20 | STCM11 | 1,27 | 2.81 |
| 2265295 | KM63TSMKSKNL19 | 60 | 2.362 | 43 | 1.693 | 86 | 3.386 | SN..190612/SN..643 | ISSN633 | KLM68 | CKM13 | STCM8 | 1,35 | 2.97 |



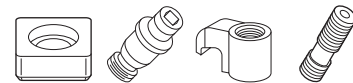
■ MSRN 75°



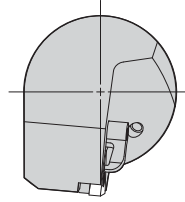
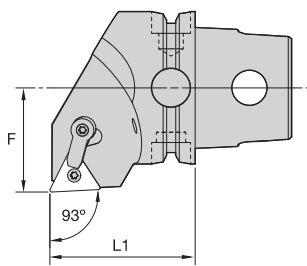
| order number | catalog number | L1 | | F | | gage insert | shim | lock pin | clamp | clamp screw | kg | lbs |
|--------------|----------------|----|-------|----|-------|--------------------|---------|----------|-------|-------------|------|------|
| | | mm | in | mm | in | | | | | | | |
| right hand | | | | | | | | | | | | |
| 2265296 | KM63TSMRNR12 | 60 | 2.362 | 38 | 1.496 | SN..120408/SN..432 | ISSN432 | KLM46 | CKM20 | STCM11 | 1,18 | 2.61 |
| 2265298 | KM63TSMRNR19 | 60 | 2.362 | 38 | 1.496 | SN..190612/SN..643 | ISSN633 | KLM68 | CKM13 | STCM8 | 1,15 | 2.53 |
| left hand | | | | | | | | | | | | |
| 2265297 | KM63TSMRNL12 | 60 | 2.362 | 38 | 1.496 | SN..120408/SN..432 | ISSN432 | KLM46 | CKM20 | STCM11 | 1,19 | 2.61 |
| 2265299 | KM63TSMRNL19 | 60 | 2.362 | 38 | 1.496 | SN..190612/SN..643 | ISSN633 | KLM68 | CKM13 | STCM8 | 1,15 | 2.53 |



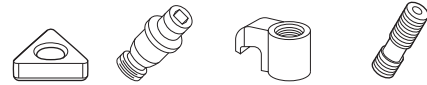
■ MSSN 45°



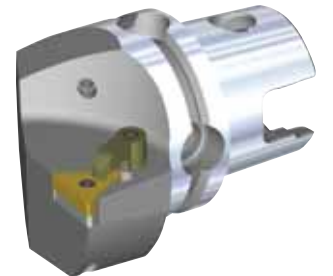
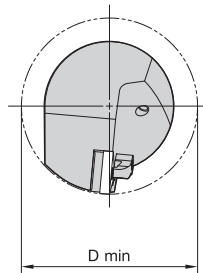
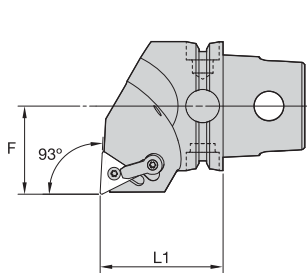
| order number | catalog number | L1 | | L1S | | F | | D min | | gage insert | shim | lock pin | clamp | clamp screw | kg | lbs |
|--------------|----------------|----|-------|------|-------|----|-------|-------|-------|--------------------|---------|----------|-------|-------------|------|------|
| | | mm | in | mm | in | mm | in | mm | in | | | | | | | |
| right hand | | | | | | | | | | | | | | | | |
| 2265300 | KM63TSMSSNR12 | 60 | 2.362 | 68,3 | 2.690 | 43 | 1.693 | 86 | 3.386 | SN..120408/SN..432 | ISSN432 | KLM46 | CKM20 | STCM11 | 1,11 | 2.45 |
| 2265302 | KM63TSMSSNR15 | 60 | 2.362 | 70,2 | 2.765 | 43 | 1.693 | 100 | 3.937 | SN..150612/SN..543 | ISSN533 | KLM58 | CKM20 | STCM11 | 1,10 | 2.42 |
| 2265304 | KM63TSMSSNR19 | 60 | 2.362 | 72,5 | 2.854 | 43 | 1.693 | 100 | 3.937 | SN..190612/SN..643 | ISSN633 | KLM68 | CKM13 | STCM8 | 1,14 | 2.51 |
| left hand | | | | | | | | | | | | | | | | |
| 2265301 | KM63TSMSSNL12 | 60 | 2.362 | 68,3 | 2.690 | 43 | 1.693 | 86 | 3.386 | SN..120408/SN..432 | ISSN432 | KLM46 | CKM20 | STCM11 | 1,11 | 2.45 |
| 2265303 | KM63TSMSSNL15 | 60 | 2.362 | 70,2 | 2.765 | 43 | 1.693 | 100 | 3.937 | SN..150612/SN..543 | ISSN533 | KLM58 | CKM20 | STCM11 | 1,10 | 2.42 |
| 2265305 | KM63TSMSSNL19 | 60 | 2.362 | 72,5 | 2.854 | 43 | 1.693 | 100 | 3.937 | SN..190612/SN..643 | ISSN633 | KLM68 | CKM13 | STCM8 | 1,15 | 2.53 |



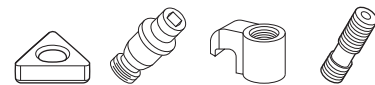
■ MTJN 93°



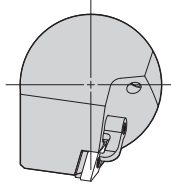
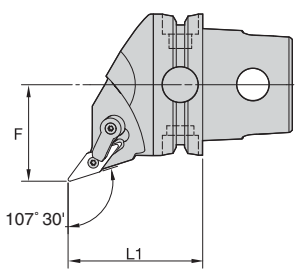
| order number | catalog number | L1 | | F | | gage insert | shim | lock pin | clamp | clamp screw | kg | lbs |
|--------------|----------------|----|-------|----|-------|--------------------|---------|----------|-------|-------------|------|------|
| | | mm | in | mm | in | | | | | | | |
| | right hand | | | | | | | | | | | |
| 2265306 | KM63TSMTJNR22 | 60 | 2.362 | 43 | 1.693 | TN..220408/TN..432 | ITSN433 | KLM46 | CKM23 | STCM11 | 1,23 | 2.72 |
| | left hand | | | | | | | | | | | |
| 2265307 | KM63TSMTJNL22 | 60 | 2.362 | 43 | 1.693 | TN..220408/TN..432 | ITSN433 | KLM46 | CKM23 | STCM11 | 1,23 | 2.72 |



■ MTUN 93°



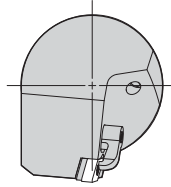
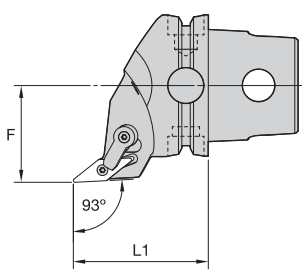
| order number | catalog number | L1 | | F | | D min | | gage insert | shim | lock pin | clamp | clamp screw | kg | lbs |
|--------------|----------------|----|-------|----|-------|-------|-------|--------------------|---------|----------|-------|-------------|------|------|
| | | mm | in | mm | in | mm | in | | | | | | | |
| | right hand | | | | | | | | | | | | | |
| 2265308 | KM63TSMTUNR22 | 60 | 2.362 | 43 | 1.693 | 86 | 3.386 | TN..220408/TN..432 | ITSN433 | KLM46 | CKM23 | STCM11 | 1,27 | 2.79 |
| | left hand | | | | | | | | | | | | | |
| 2265309 | KM63TSMTUNL22 | 60 | 2.362 | 43 | 1.693 | 86 | 3.386 | TN..220408/TN..432 | ITSN433 | KLM46 | CKM23 | STCM11 | 1,27 | 2.79 |



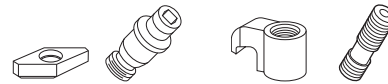
■ MVHN 107° 30'



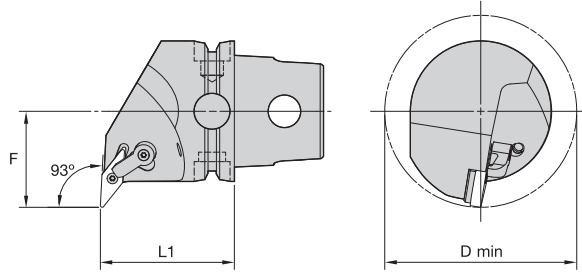
| order number | catalog number | L1 | | F | | gage insert | shim | lock pin | clamp | clamp screw | kg | lbs |
|--------------|-----------------------------|----|-------|----|-------|--------------------|---------|----------|-------|-------------|------|------|
| | | mm | in | mm | in | | | | | | | |
| 2265310 | right hand KM63TSMVHNR16 | 60 | 2.362 | 43 | 1.693 | VN..160408/VN..332 | IVSN322 | KLM34L | CKM23 | STCM11 | 1,07 | 2.36 |
| 2265311 | left hand KM63TSMVHNL16 | 60 | 2.362 | 43 | 1.693 | VN..160408/VN..332 | IVSN322 | KLM34L | CKM23 | STCM11 | 1,07 | 2.36 |



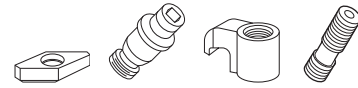
■ MVJN 93°



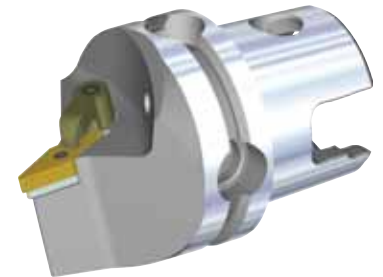
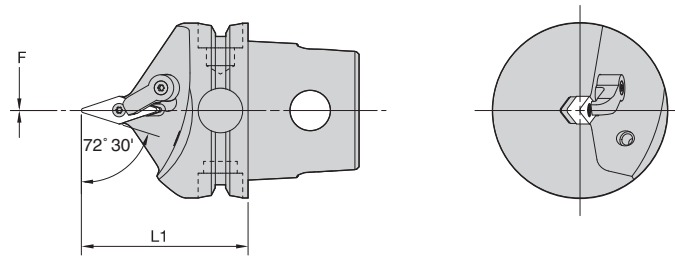
| order number | catalog number | L1 | | F | | gage insert | shim | lock pin | clamp | clamp screw | kg | lbs |
|--------------|-----------------------------|----|-------|----|-------|--------------------|---------|----------|-------|-------------|------|------|
| | | mm | in | mm | in | | | | | | | |
| 2265312 | right hand KM63TSMVJNR16 | 60 | 2.362 | 43 | 1.693 | VN..160408/VN..332 | IVSN322 | KLM34L | CKM23 | STCM11 | 1,00 | 2.21 |
| 2265313 | left hand KM63TSMVJNL16 | 60 | 2.362 | 43 | 1.693 | VN..160408/VN..332 | IVSN322 | KLM34L | CKM23 | STCM11 | 1,00 | 2.21 |



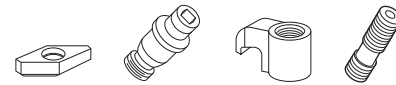
■ MVUN 93°



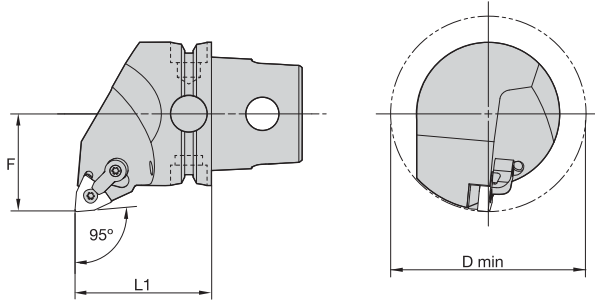
| order number | catalog number | L1 | | F | | D min | | gage insert | shim | lock pin | clamp | clamp screw | kg | lbs | |
|--------------|----------------|------------|-------|----|-------|-------|-------|--------------------|---------|----------|-------|-------------|------|------|--|
| | | mm | in | mm | in | mm | in | | | | | | | | |
| | | right hand | | | | | | | | | | | | | |
| 2265314 | KM63TSMVUNR16 | 60 | 2.362 | 43 | 1.693 | 86 | 3.386 | VN..160408/VN..332 | IVSN322 | KLM34L | CKM23 | STCM11 | 1,17 | 2.58 | |
| | | left hand | | | | | | | | | | | | | |
| 2265315 | KM63TSMVUNL16 | 60 | 2.362 | 43 | 1.693 | 86 | 3.386 | VN..160408/VN..332 | IVSN322 | KLM34L | CKM23 | STCM11 | 1,17 | 2.59 | |



■ MVVN 72° 30'



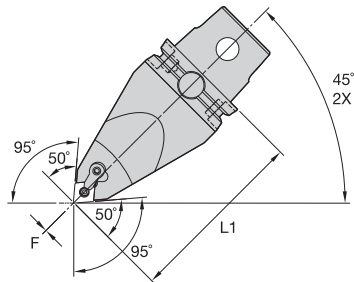
| order number | catalog number | L1 | | F | | gage insert | shim | lock pin | clamp | clamp screw | kg | lbs |
|--------------|----------------|----|-------|----|------|--------------------|---------|----------|-------|-------------|------|------|
| | | mm | in | mm | in | | | | | | | |
| 2265316 | KM63TSMVVNN16 | 60 | 2.362 | 0 | .000 | VN..160408/VN..332 | IVSN322 | KLM34L | CKM23 | STCM11 | 0,86 | 1.90 |



■ MWLN 95°



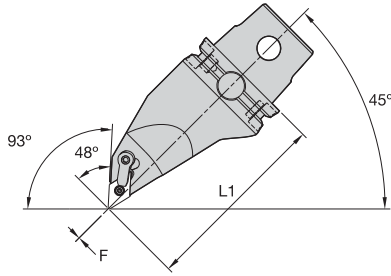
| order number | catalog number | L1 | | F | | D min | | gage insert | shim | lock pin | clamp | clamp screw | kg | lbs |
|--------------|----------------|----|-------|----|-------|-------|-------|--------------------|---------|----------|-------|-------------|------|------|
| | | mm | in | mm | in | mm | in | | | | | | | |
| | | | | | | | | | | | | | | |
| | | | | | | | | | | | | | | |
| | | | | | | | | | | | | | | |
| | | | | | | | | | | | | | | |
| | | | | | | | | | | | | | | |
| | | | | | | | | | | | | | | |
| 2265317 | KM63TSMWLNRO8 | 60 | 2.362 | 43 | 1.693 | 86 | 3.386 | WN..080408/WN..432 | IWSN433 | KLM46 | CKM20 | STCM11 | 1,20 | 2.65 |
| | right hand | | | | | | | | | | | | | |
| 2265318 | KM63TSMWLNLO8 | 60 | 2.362 | 43 | 1.693 | 86 | 3.386 | WN..080408/WN..432 | IWSN433 | KLM46 | CKM20 | STCM11 | 1,20 | 2.65 |
| | left hand | | | | | | | | | | | | | |



■ MCMN 50° • 95° Application • Centerline

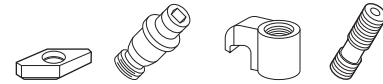


| order number | catalog number | L1 | | F | | gage insert | shim | lock pin | clamp | clamp screw | kg | lbs |
|--------------|------------------|-----|-------|----|------|--------------------|---------|----------|-------|-------------|------|------|
| | | mm | in | mm | in | | | | | | | |
| 3487474 | KM63TSMCMNN12115 | 115 | 4.528 | 0 | .000 | CN..120408/CN..432 | ICSN432 | KLM46 | CKM20 | STCM11 | 2,01 | 4.42 |

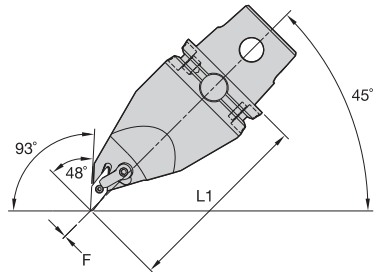


Left-Hand Tool

■ MDMN 48° • 93° Application • Centerline

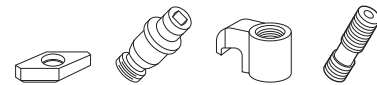


| order number | catalog number | L1 | | F | | gage insert | shim | lock pin | clamp | clamp screw | kg | lbs |
|--------------|--------------------|------------|-------|----|------|--------------------|---------|----------|-------|-------------|------|------|
| | | mm | in | mm | in | | | | | | | |
| | | right hand | | | | | | | | | | |
| 3487478 | KM63TSMNMNR1504115 | 115 | 4.528 | 0 | .000 | DN..150408/DN..432 | IDSN442 | KLM46L | CKM23 | STCM11 | 1,84 | 4.05 |
| 3487479 | KM63TSMNMNR1506115 | 115 | 4.528 | 0 | .000 | DN..150608/DN..442 | IDSN442 | KLM46L | CKM23 | STCM11 | 1,83 | 4.04 |
| | | left hand | | | | | | | | | | |
| 3487475 | KM63TSMNMNL1504115 | 115 | 4.528 | 0 | .000 | DN..150408/DN..432 | IDSN442 | KLM46L | CKM23 | STCM11 | 1,84 | 4.05 |
| 3487476 | KM63TSMNMNL1506115 | 115 | 4.528 | 0 | .000 | DN..150608/DN..442 | IDSN442 | KLM46L | CKM23 | STCM11 | 1,83 | 4.04 |

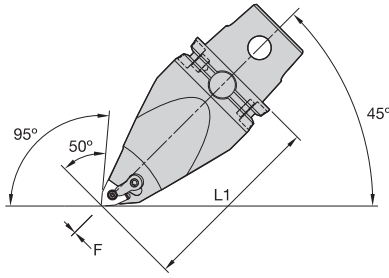


Left-Hand Tool

■ MVMN 48° • 93° Application • Centerline

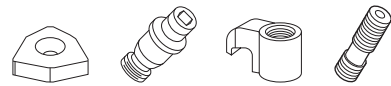


| order number | catalog number | L1 | | F | | gage insert | shim | lock pin | clamp | clamp screw | kg | lbs |
|--------------|------------------|------------|-------|----|------|--------------------|---------|----------|-------|-------------|------|------|
| | | mm | in | mm | in | | | | | | | |
| | | right hand | | | | | | | | | | |
| 3487480 | KM63TSMVMNR16115 | 115 | 4.528 | 0 | .000 | VN..160408/VN..332 | IVSN322 | KLM34L | CKM23 | STCM11 | 1,93 | 4.26 |
| | | left hand | | | | | | | | | | |
| 3487477 | KM63TSMVMNL16115 | 115 | 4.528 | 0 | .000 | VN..160408/VN..332 | IVSN322 | KLM34L | CKM23 | STCM11 | 1,93 | 4.26 |

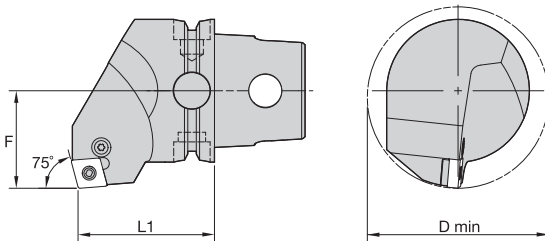


Left-Hand Tool

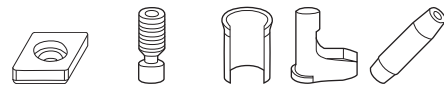
■ MWMN 50° • 95° Application • Centerline



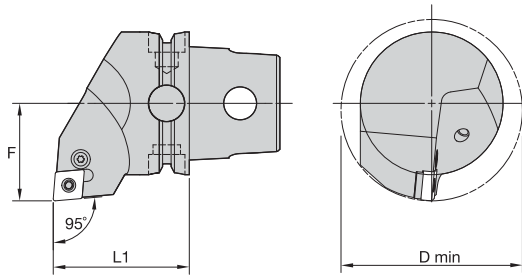
| order number | catalog number | L1 | | F | | gage insert | shim | lock pin | clamp | clamp screw | kg | lbs |
|--------------|------------------|-----|-------|----|------|--------------------|---------|----------|-------|-------------|------|------|
| | | mm | in | mm | in | | | | | | | |
| | right hand | | | | | | | | | | | |
| 3487604 | KM63TSMWMNR08115 | 115 | 4.528 | 0 | .000 | WN..080408/WN..432 | IWSN433 | KLM46 | CKM20 | STCM11 | 1,98 | 4.37 |
| | left hand | | | | | | | | | | | |
| 3487603 | KM63TSMWMNL08115 | 115 | 4.528 | 0 | .000 | WN..080408/WN..432 | IWSN433 | KLM46 | CKM20 | STCM11 | 1,98 | 4.37 |



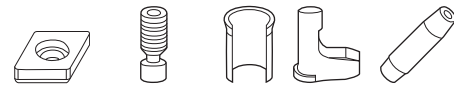
■ PCKN 75°



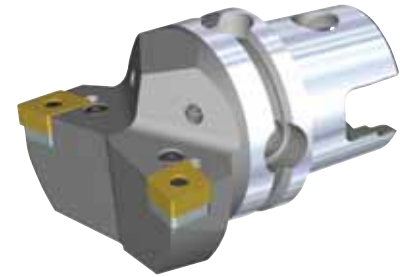
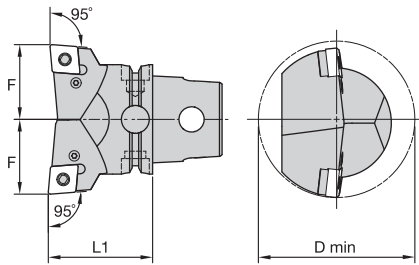
| order number | catalog number | L1 | | F | | D min | | gage insert | shim | lever screw | shim pin | toggle lever | punch | kg | lbs |
|--------------|----------------|----|-------|----|-------|-------|-------|--------------------|---------|-------------|----------|--------------|---------|------|------|
| | | mm | in | mm | in | mm | in | | | | | | | | |
| | right hand | | | | | | | | | | | | | | |
| 2407450 | KM63TSPCKNR12 | 60 | 2.362 | 43 | 1.693 | 80 | 3.150 | CN..120408/CN..432 | 512.112 | 514.123 | 513.023 | 511.023 | 515.018 | 1,29 | 2.84 |
| 2407452 | KM63TSPCKNR16 | 60 | 2.362 | 43 | 1.693 | 80 | 3.150 | CN..160612/CN..543 | 512.117 | 514.125 | 513.025 | 511.025 | 515.022 | 1,32 | 2.91 |
| 2407954 | KM63TSPCKNR19 | 60 | 2.362 | 43 | 1.693 | 80 | 3.150 | CN..190612/CN..643 | 512.123 | 514.133 | 513.033 | 511.023 | 515.022 | 1,34 | 2.95 |
| | left hand | | | | | | | | | | | | | | |
| 2407451 | KM63TSPCKNL12 | 60 | 2.362 | 43 | 1.693 | 80 | 3.150 | CN..120408/CN..432 | 512.112 | 514.123 | 513.023 | 511.023 | 515.018 | 1,29 | 2.84 |
| 2407953 | KM63TSPCKNL16 | 60 | 2.362 | 43 | 1.693 | 80 | 3.150 | CN..160612/CN..543 | 512.117 | 514.125 | 513.025 | 511.025 | 515.022 | 1,32 | 2.91 |
| 2407955 | KM63TSPCKNL19 | 60 | 2.362 | 43 | 1.693 | 80 | 3.150 | CN..190612/CN..643 | 512.123 | 514.133 | 513.033 | 511.033 | 515.022 | 1,34 | 2.95 |



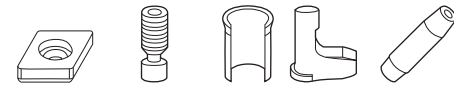
■ PCLN 95°



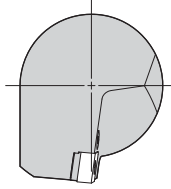
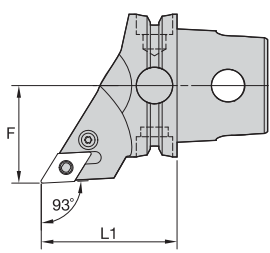
| order number | catalog number | L1 | | F | | D min | | gage insert | shim | lever screw | shim pin | toggle lever | punch | kg | lbs |
|-------------------|----------------|----|-------|----|-------|-------|-------|--------------------|---------|-------------|----------|--------------|---------|------|------|
| | | mm | in | mm | in | mm | in | | | | | | | | |
| right hand | | | | | | | | | | | | | | | |
| 2257149 | KM63TSPCLNR12 | 60 | 2.362 | 43 | 1.693 | 80 | 3.150 | CN..120408/CN..432 | 512.112 | 514.123 | 513.023 | 511.023 | 515.018 | 1,21 | 2.66 |
| 2407957 | KM63TSPCLNR16 | 60 | 2.362 | 43 | 1.693 | 80 | 3.150 | CN..160612/CN..543 | 512.117 | 514.125 | 513.025 | 511.025 | 515.022 | 1,23 | 2.71 |
| 2407959 | KM63TSPCLNR19 | 60 | 2.362 | 43 | 1.693 | 80 | 3.150 | CN..190612/CN..643 | 512.123 | 514.133 | 513.033 | 511.033 | 515.022 | 1,23 | 2.71 |
| left hand | | | | | | | | | | | | | | | |
| 2407956 | KM63TSPCLNL12 | 60 | 2.362 | 43 | 1.693 | 80 | 3.150 | CN..120408/CN..432 | 512.112 | 514.123 | 513.023 | 511.023 | 515.018 | 1,21 | 2.66 |
| 2407958 | KM63TSPCLNL16 | 60 | 2.362 | 43 | 1.693 | 80 | 3.150 | CN..160612/CN..543 | 512.117 | 514.125 | 513.025 | 511.025 | 515.022 | 1,23 | 2.71 |
| 2407960 | KM63TSPCLNL19 | 60 | 2.362 | 43 | 1.693 | 80 | 3.150 | CN..190612/CN..643 | 512.123 | 514.133 | 513.033 | 511.033 | 515.022 | 1,23 | 2.71 |



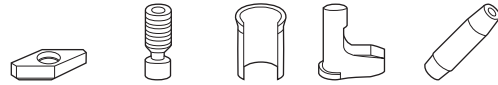
■ PCLN-2W 95°



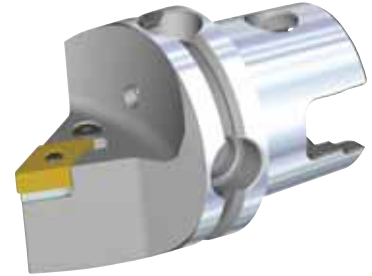
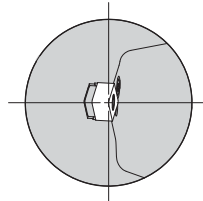
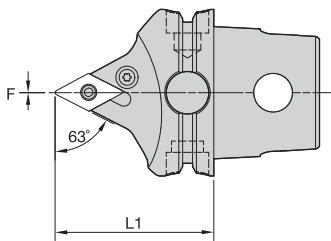
| order number | catalog number | L1 | | F | | D min | | gage insert | shim | lever screw | shim pin | toggle lever | punch | kg | lbs |
|-------------------|-----------------|----|-------|----|-------|-------|-------|--------------------|---------|-------------|----------|--------------|---------|------|------|
| | | mm | in | mm | in | mm | in | | | | | | | | |
| right hand | | | | | | | | | | | | | | | |
| 2408003 | KM63TSPCLNR162W | 60 | 2.362 | 43 | 1.693 | 90 | 3.543 | CN..160612/CN..543 | 512.117 | 514.125 | 513.025 | 511.025 | 515.022 | 1,35 | 2.97 |
| left hand | | | | | | | | | | | | | | | |
| 2408004 | KM63TSPCLNL162W | 60 | 2.362 | 43 | 1.693 | 90 | 3.543 | CN..160612/CN..543 | 512.117 | 514.125 | 513.025 | 511.025 | 515.022 | 1,35 | 2.98 |



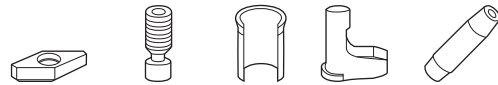
■ PDJN 93°



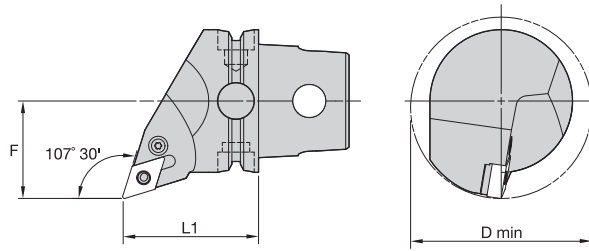
| order number | catalog number | L1 | | F | | gage insert | shim | lever screw | shim pin | toggle lever | punch | kg | lbs |
|--------------|----------------|----|-------|----|-------|--------------------|---------|-------------|----------|--------------|---------|------|------|
| | | mm | in | mm | in | | | | | | | | |
| right hand | | | | | | | | | | | | | |
| 2407969 | KM63TSPDJNR11 | 60 | 2.362 | 43 | 1.693 | DN..110408/DN..332 | 512.060 | 514.118 | 513.060 | 511.060 | 515.018 | 0,95 | 2.10 |
| 2407971 | KM63TSPDJNR15 | 60 | 2.362 | 43 | 1.693 | DN..150608/DN..442 | 512.153 | 514.128 | 513.023 | 511.024 | 515.018 | 0,94 | 2.08 |
| left hand | | | | | | | | | | | | | |
| 2407970 | KM63TSPDJNL11 | 60 | 2.362 | 43 | 1.693 | DN..110408/DN..332 | 512.060 | 514.118 | 513.060 | 511.060 | 515.018 | 0,97 | 2.14 |
| 2407972 | KM63TSPDJNL15 | 60 | 2.362 | 43 | 1.693 | DN..150608/DN..442 | 512.153 | 514.128 | 513.023 | 511.024 | 515.018 | 0,94 | 2.08 |



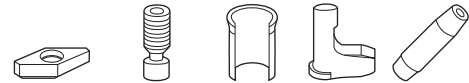
■ PDNN 63°



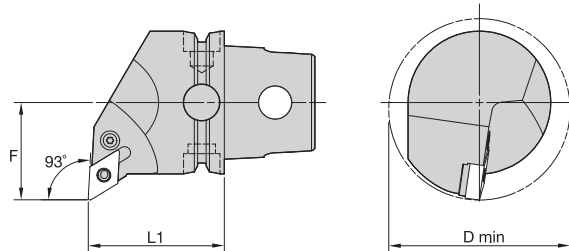
| order number | catalog number | L1 | | F | | gage insert | shim | lever screw | shim pin | toggle lever | punch | kg | lbs |
|--------------|----------------|----|-------|----|------|--------------------|---------|-------------|----------|--------------|---------|------|------|
| | | mm | in | mm | in | | | | | | | | |
| right hand | | | | | | | | | | | | | |
| 2407973 | KM63TSPDNNR11 | 60 | 2.362 | 0 | .000 | DN..110408/DN..332 | 512.060 | 514.118 | 513.060 | 511.060 | 515.018 | 0,91 | 2.01 |
| 2407975 | KM63TSPDNNR15 | 60 | 2.362 | 0 | .000 | DN..150608/DN..442 | 512.153 | 514.128 | 513.023 | 511.024 | 515.018 | 0,84 | 1.86 |
| left hand | | | | | | | | | | | | | |
| 2407974 | KM63TSPDNNL11 | 60 | 2.362 | 0 | .000 | DN..110408/DN..332 | 512.060 | 514.118 | 513.060 | 511.060 | 515.018 | 0,91 | 2.01 |
| 2407976 | KM63TSPDNNL15 | 60 | 2.362 | 0 | .000 | DN..150608/DN..442 | 512.153 | 514.128 | 513.023 | 511.024 | 515.018 | 0,85 | 1.86 |



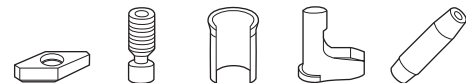
■ PDQN 107° 30'



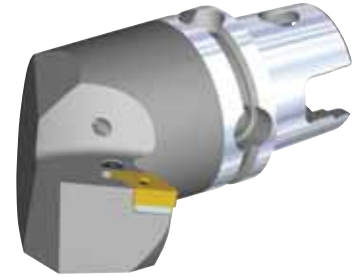
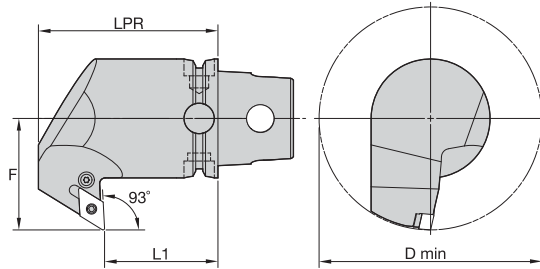
| order number | catalog number | L1 | | F | | D min | | gage insert | shim | lever screw | shim pin | toggle lever | punch | kg | lbs |
|--------------|----------------|----|-------|----|-------|-------|-------|--------------------|---------|-------------|----------|--------------|---------|------|------|
| | | mm | in | mm | in | mm | in | | | | | | | | |
| right hand | | | | | | | | | | | | | | | |
| 2407977 | KM63TSPDQNR11 | 60 | 2.362 | 43 | 1.693 | 80 | 3.150 | DN..110408/DN..332 | 512.060 | 514.118 | 513.060 | 511.060 | 515.018 | 1,11 | 2.45 |
| 2407979 | KM63TSPDQNR15 | 60 | 2.362 | 43 | 1.693 | 80 | 3.150 | DN..150608/DN..442 | 512.153 | 514.128 | 513.023 | 511.024 | 515.018 | 1,08 | 2.38 |
| left hand | | | | | | | | | | | | | | | |
| 2407978 | KM63TSPDQNL11 | 60 | 2.362 | 43 | 1.693 | 80 | 3.150 | DN..110408/DN..332 | 512.060 | 514.118 | 513.060 | 511.060 | 515.018 | 1,11 | 2.45 |
| 2407980 | KM63TSPDQNL15 | 60 | 2.362 | 43 | 1.693 | 80 | 3.150 | DN..150608/DN..442 | 512.153 | 514.128 | 513.023 | 511.024 | 515.018 | 1,08 | 2.38 |



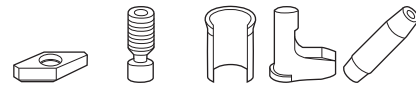
■ PDUN 93°



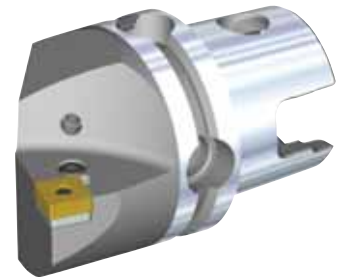
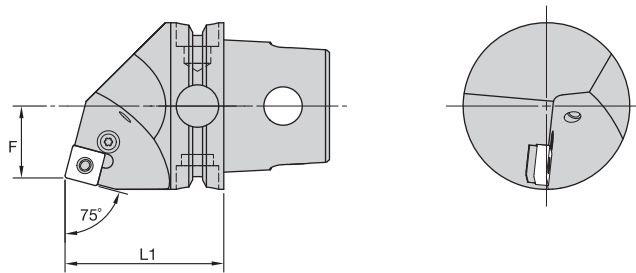
| order number | catalog number | L1 | | F | | D min | | gage insert | shim | lever screw | shim pin | toggle lever | punch | kg | lbs |
|--------------|----------------|----|-------|----|-------|-------|-------|--------------------|---------|-------------|----------|--------------|---------|------|------|
| | | mm | in | mm | in | mm | in | | | | | | | | |
| right hand | | | | | | | | | | | | | | | |
| 2407981 | KM63TSPDUNR11 | 60 | 2.362 | 43 | 1.693 | 80 | 3.150 | DN..110408/DN..332 | 512.060 | 514.118 | 513.060 | 511.060 | 515.018 | 1,19 | 2.62 |
| 2407983 | KM63TSPDUNR15 | 60 | 2.362 | 43 | 1.693 | 80 | 3.150 | DN..150608/DN..442 | 512.153 | 514.128 | 513.023 | 511.024 | 515.018 | 1,23 | 2.71 |
| left hand | | | | | | | | | | | | | | | |
| 2407982 | KM63TSPDUNL11 | 60 | 2.362 | 43 | 1.693 | 80 | 3.150 | DN..110408/DN..332 | 512.060 | 514.118 | 513.060 | 511.060 | 515.018 | 1,19 | 2.63 |
| 2407984 | KM63TSPDUNL15 | 60 | 2.362 | 43 | 1.693 | 80 | 3.150 | DN..150608/DN..442 | 512.153 | 514.128 | 513.023 | 511.024 | 515.018 | 1,23 | 2.71 |



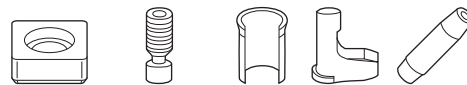
■ PDXN 93°



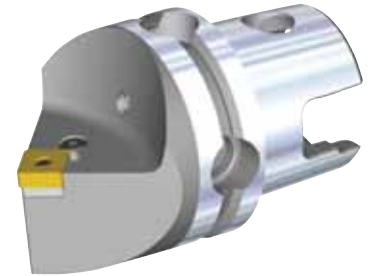
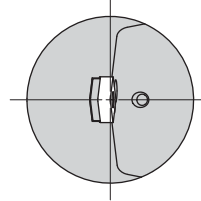
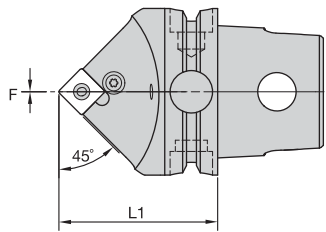
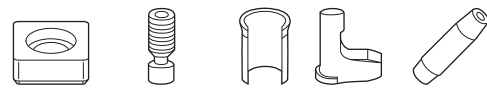
| order number | catalog number | L1 | | LPR | | F | | D min | | gage insert | shim | lever screw | shim pin | toggle lever | punch | kg | lbs |
|--------------|----------------|----|-------|-----|-------|----|-------|-------|-------|--------------------|---------|-------------|----------|--------------|---------|------|------|
| | | mm | in | mm | in | mm | in | mm | in | | | | | | | | |
| right hand | | | | | | | | | | | | | | | | | |
| 2407992 | KM63TSPDXNR15 | 60 | 2.362 | 95 | 3.740 | 59 | 2.323 | 118 | 4.646 | DN..150608/DN..442 | 512.153 | 514.128 | 513.023 | 511.024 | 515.018 | 2,21 | 4.85 |
| left hand | | | | | | | | | | | | | | | | | |
| 2407993 | KM63TSPDXNL15 | 60 | 2.362 | 95 | 3.740 | 59 | 2.323 | 118 | 4.646 | DN..150608/DN..442 | 512.153 | 514.128 | 513.023 | 511.024 | 515.018 | 2,21 | 4.85 |



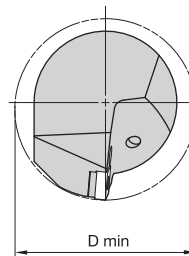
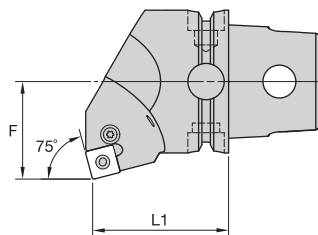
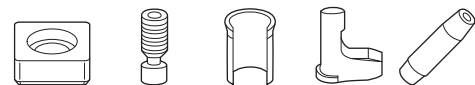
■ PSBN 75°



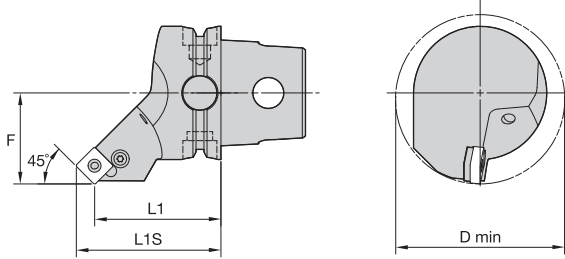
| order number | catalog number | L1 | | F | | gage insert | shim | lever screw | shim pin | toggle lever | punch | kg | lbs |
|--------------|----------------|----|-------|----|-------|--------------------|---------|-------------|----------|--------------|---------|------|------|
| | | mm | in | mm | in | | | | | | | | |
| right hand | | | | | | | | | | | | | |
| 2407994 | KM63TSPSBNR12 | 60 | 2.362 | 27 | 1.063 | SN..120408/SN..432 | 512.063 | 514.123 | 513.023 | 511.023 | 515.018 | 1,15 | 2.54 |
| 2407996 | KM63TSPSBNR15 | 60 | 2.362 | 27 | 1.063 | SN..150612/SN..543 | 512.025 | 514.125 | 513.025 | 511.025 | 515.022 | 1,11 | 2.45 |
| 2407998 | KM63TSPSBNR19 | 60 | 2.362 | 27 | 1.063 | SN..190612/SN..643 | 512.083 | 514.133 | 513.033 | 511.033 | 515.022 | 1,10 | 2.42 |
| left hand | | | | | | | | | | | | | |
| 2407995 | KM63TSPSBNL12 | 60 | 2.362 | 27 | 1.063 | SN..120408/SN..432 | 512.063 | 514.123 | 513.023 | 511.023 | 515.018 | 1,10 | 2.42 |
| 2407997 | KM63TSPSBNL15 | 60 | 2.362 | 27 | 1.063 | SN..150612/SN..543 | 512.025 | 514.125 | 513.025 | 511.025 | 515.022 | 1,10 | 2.42 |
| 2407999 | KM63TSPSBNL19 | 60 | 2.362 | 27 | 1.063 | SN..190612/SN..643 | 512.083 | 514.133 | 513.033 | 511.033 | 515.022 | 1,10 | 2.42 |


■ PSDN 45°


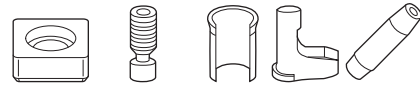
| order number | catalog number | L1 | | F | | gage insert | shim | lever screw | shim pin | toggle lever | punch | kg | lbs |
|--------------|----------------|----|-------|----|------|--------------------|---------|-------------|----------|--------------|---------|------|------|
| | | mm | in | mm | in | | | | | | | | |
| 2408000 | KM63TSPSDNN12 | 60 | 2.362 | 0 | .000 | SN..120408/SN..432 | 512.063 | 514.123 | 513.023 | 511.023 | 515.018 | 0,98 | 2.16 |
| 2408001 | KM63TSPSDNN15 | 60 | 2.362 | 0 | .000 | SN..150612/SN..543 | 512.025 | 514.125 | 513.025 | 511.025 | 515.022 | 1,01 | 2.23 |
| 2408002 | KM63TSPSDNN19 | 60 | 2.362 | 0 | .000 | SN..190612/SN..643 | 512.083 | 514.133 | 513.033 | 511.033 | 515.022 | 0,94 | 2.06 |


■ PSKN 75°


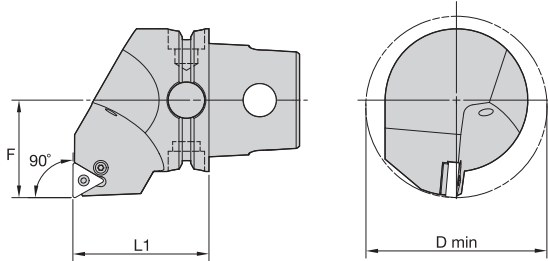
| order number | catalog number | L1 | | F | | D min | | gage insert | shim | lever screw | shim pin | toggle lever | punch | kg | lbs |
|-------------------|----------------|----|-------|----|-------|-------|-------|--------------------|---------|-------------|----------|--------------|---------|------|------|
| | | mm | in | mm | in | mm | in | | | | | | | | |
| right hand | | | | | | | | | | | | | | | |
| 2408005 | KM63TSPSKNR12 | 60 | 2.362 | 43 | 1.693 | 80 | 3.150 | SN..120408/SN..432 | 512.063 | 514.123 | 513.023 | 511.023 | 515.018 | 1,36 | 3.01 |
| 2408007 | KM63TSPSKNR15 | 60 | 2.362 | 43 | 1.693 | 80 | 3.150 | SN..150612/SN..543 | 512.025 | 514.125 | 513.025 | 511.025 | 515.022 | 1,39 | 3.06 |
| 2408009 | KM63TSPSKNR19 | 60 | 2.362 | 43 | 1.693 | 80 | 3.150 | SN..190612/SN..643 | 512.083 | 514.133 | 513.033 | 511.033 | 515.022 | 1,34 | 2.95 |
| left hand | | | | | | | | | | | | | | | |
| 2408006 | KM63TSPSKNL12 | 60 | 2.362 | 43 | 1.693 | 80 | 3.150 | SN..120408/SN..432 | 512.063 | 514.123 | 513.023 | 511.023 | 515.018 | 1,36 | 3.00 |
| 2408008 | KM63TSPSKNL15 | 60 | 2.362 | 43 | 1.693 | 80 | 3.150 | SN..150612/SN..543 | 512.025 | 514.125 | 513.025 | 511.025 | 515.022 | 1,39 | 3.06 |
| 2408010 | KM63TSPSKNL19 | 60 | 2.362 | 43 | 1.693 | 80 | 3.150 | SN..190612/SN..643 | 512.083 | 514.133 | 513.033 | 511.033 | 515.022 | 1,34 | 2.95 |



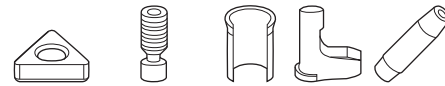
■ PSSN 45°



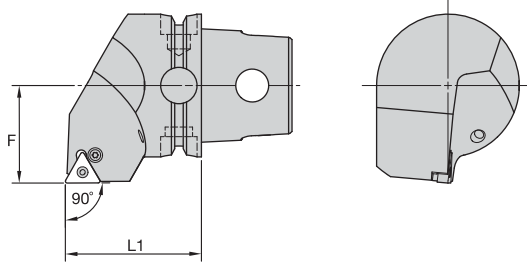
| order number | catalog number | L1 | | L1S | | F | | D min | | gage insert | shim | lever screw | shim pin | toggle lever | punch | kg | lbs |
|--------------|----------------|----|-------|------|-------|----|-------|-------|-------|--------------------|---------|-------------|----------|--------------|---------|------|------|
| | | mm | in | mm | in | mm | in | mm | in | | | | | | | | |
| right hand | | | | | | | | | | | | | | | | | |
| 2408011 | KM63TSPSSNR12 | 60 | 2.362 | 68,3 | 2.690 | 43 | 1.693 | 80 | 3.150 | SN..120408/SN..432 | 512.063 | 514.123 | 513.023 | 511.023 | 515.018 | 1,06 | 2.33 |
| 2408013 | KM63TSPSSNR15 | 60 | 2.362 | 70,2 | 2.765 | 43 | 1.693 | 100 | 3.937 | SN..150612/SN..543 | 512.025 | 514.125 | 513.025 | 511.025 | 515.022 | 1,05 | 2.32 |
| 2408015 | KM63TSPSSNR19 | 60 | 2.362 | 72,5 | 2.854 | 43 | 1.693 | 100 | 3.937 | SN..190612/SN..643 | 512.083 | 514.133 | 513.033 | 511.033 | 515.022 | 1,13 | 2.50 |
| left hand | | | | | | | | | | | | | | | | | |
| 2408012 | KM63TSPSSNL12 | 60 | 2.362 | 68,3 | 2.690 | 43 | 1.693 | 80 | 3.150 | SN..120408/SN..432 | 512.063 | 514.123 | 513.023 | 511.023 | 515.018 | 1,06 | 2.33 |
| 2408016 | KM63TSPSSNL19 | 60 | 2.362 | 72,5 | 2.854 | 43 | 1.693 | 100 | 3.937 | SN..190612/SN..643 | 512.083 | 514.133 | 513.033 | 511.033 | 515.022 | 1,13 | 2.50 |



■ PTFN 90°



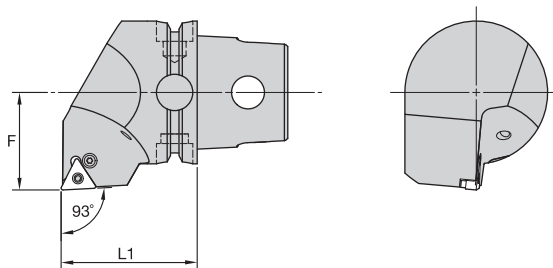
| order number | catalog number | L1 | | F | | D min | | gage insert | shim | lever screw | shim pin | toggle lever | punch | kg | lbs |
|--------------|----------------|----|-------|----|-------|-------|-------|--------------------|---------|-------------|----------|--------------|---------|------|------|
| | | mm | in | mm | in | mm | in | | | | | | | | |
| right hand | | | | | | | | | | | | | | | |
| 2408017 | KM63TSPTFNR16 | 60 | 2.362 | 43 | 1.693 | 80 | 3.150 | TN..160408/TN..332 | 512.013 | 514.118 | 513.018 | 511.018 | 515.018 | 1,26 | 2.77 |
| left hand | | | | | | | | | | | | | | | |
| 2408018 | KM63TSPTFNL16 | 60 | 2.362 | 43 | 1.693 | 80 | 3.150 | TN..160408/TN..332 | 512.013 | 514.118 | 513.018 | 511.018 | 515.018 | 1,30 | 2.86 |
| 2408022 | KM63TSPTFNL27 | 60 | 2.362 | 43 | 1.693 | 80 | 3.150 | TN..270612/TN..543 | 512.031 | 514.128 | 513.025 | 511.028 | 515.022 | 1,27 | 2.81 |



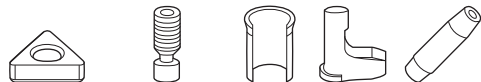
■ PTGN 90°



| order number | catalog number | L1 | | F | | gage insert | shim | lever screw | shim pin | toggle lever | punch | kg | lbs |
|--------------|----------------|----|-------|----|-------|--------------------|---------|-------------|----------|--------------|---------|------|------|
| | | mm | in | mm | in | | | | | | | | |
| right hand | | | | | | | | | | | | | |
| 2408023 | KM63TSPTGNR16 | 60 | 2.362 | 43 | 1.693 | TN..160408/TN..332 | 512.013 | 514.118 | 513.018 | 511.018 | 515.018 | 1,30 | 2.87 |
| 2408025 | KM63TSPTGNR22 | 60 | 2.362 | 43 | 1.693 | TN..220408/TN..432 | 512.023 | 514.123 | 513.023 | 511.023 | 515.018 | 1,27 | 2.80 |
| 2408027 | KM63TSPTGNR27 | 60 | 2.362 | 43 | 1.693 | TN..270612/TN..543 | 512.031 | 514.128 | 513.025 | 511.028 | 515.022 | 1,27 | 2.80 |
| left hand | | | | | | | | | | | | | |
| 2408024 | KM63TSPTGNL16 | 60 | 2.362 | 43 | 1.693 | TN..160408/TN..332 | 512.013 | 514.118 | 513.018 | 511.018 | 515.018 | 1,28 | 2.82 |
| 2408026 | KM63TSPTGNL22 | 60 | 2.362 | 43 | 1.693 | TN..220408/TN..432 | 512.013 | 514.123 | 513.023 | 511.023 | 515.018 | 1,28 | 2.82 |
| 2408028 | KM63TSPTGNL27 | 60 | 2.362 | 43 | 1.693 | TN..270612/TN..543 | 512.031 | 514.128 | 513.025 | 511.028 | 515.022 | 1,27 | 2.80 |



■ PTJN 93°



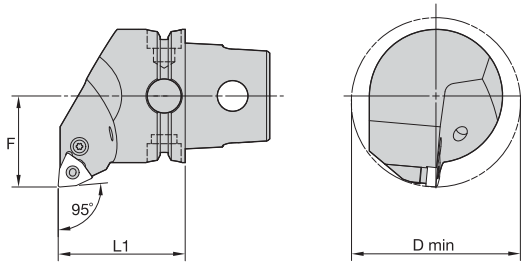
| order number | catalog number | L1 | | F | | gage insert | shim | lever screw | shim pin | toggle lever | punch | kg | lbs |
|--------------|----------------|----|-------|----|-------|--------------------|---------|-------------|----------|--------------|---------|------|------|
| | | mm | in | mm | in | | | | | | | | |
| right hand | | | | | | | | | | | | | |
| 2408029 | KM63TSPTJNR16 | 60 | 2.362 | 43 | 1.693 | TN..160408/TN..332 | 512.013 | 514.118 | 513.018 | 511.018 | 515.018 | 1,33 | 2.92 |
| 2408031 | KM63TSPTJNR22 | 60 | 2.362 | 43 | 1.693 | TN..220408/TN..432 | 512.023 | 514.123 | 513.023 | 511.023 | 515.018 | 1,30 | 2.86 |
| 2408033 | KM63TSPTJNR27 | 60 | 2.362 | 43 | 1.693 | TN..270612/TN..543 | 512.031 | 514.128 | 513.025 | 511.028 | 515.022 | 1,26 | 2.71 |
| left hand | | | | | | | | | | | | | |
| 2408030 | KM63TSPTJNL16 | 60 | 2.362 | 43 | 1.693 | TN..160408/TN..332 | 512.013 | 514.118 | 513.018 | 511.018 | 515.018 | 1,22 | 2.68 |
| 2408032 | KM63TSPTJNL22 | 60 | 2.362 | 43 | 1.693 | TN..220408/TN..432 | 512.023 | 514.123 | 513.023 | 511.023 | 515.018 | 1,30 | 2.86 |
| 2408034 | KM63TSPTJNL27 | 60 | 2.362 | 43 | 1.693 | TN..270612/TN..543 | 512.031 | 514.128 | 513.025 | 511.028 | 515.022 | 1,26 | 2.71 |

KM63TS™ Cutting Units

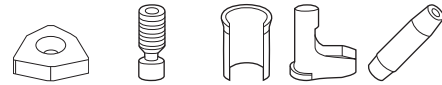
P-Clamping • S-Clamping



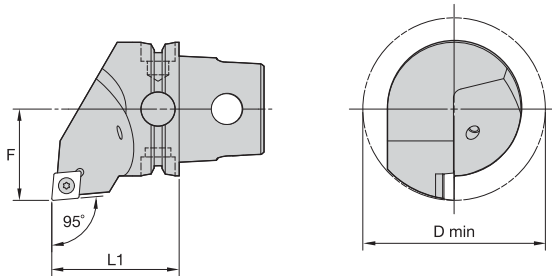
KM63TS Cutting Units



■ PWLN 95°



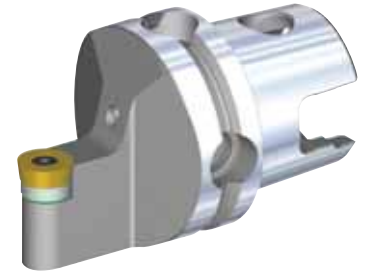
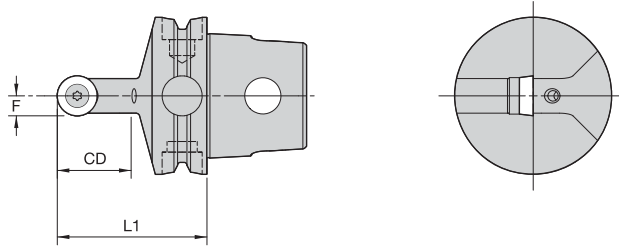
| order number | catalog number | L1 | | F | | D min | | gage insert | shim | lever screw | shim pin | toggle lever | punch | kg | lbs |
|--------------|----------------|------------|-------|----|-------|-------|-------|--------------------|---------|-------------|----------|--------------|---------|------|------|
| | | mm | in | mm | in | mm | in | | | | | | | | |
| | | right hand | | | | | | | | | | | | | |
| 2408035 | KM63TSPWLN06 | 60 | 2.362 | 43 | 1.693 | 80 | 3.150 | WN..060408/WN..332 | 512.134 | 514.118 | 513.018 | 511.018 | 515.018 | 1,33 | 2.94 |
| 2408037 | KM63TSPWLN08 | 60 | 2.362 | 43 | 1.693 | 80 | 3.150 | WN..080408/WN..432 | 512.135 | 514.123 | 513.023 | 511.023 | 515.018 | 1,24 | 2.74 |
| | | left hand | | | | | | | | | | | | | |
| 2408036 | KM63TSPWLN06 | 60 | 2.362 | 43 | 1.693 | 80 | 3.150 | WN..060408/WN..332 | 512.134 | 514.118 | 513.018 | 511.018 | 515.018 | 1,33 | 2.94 |
| 2408038 | KM63TSPWLN08 | 60 | 2.362 | 43 | 1.693 | 80 | 3.150 | WN..080408/WN..432 | 512.135 | 514.123 | 513.023 | 511.023 | 515.018 | 1,24 | 2.74 |



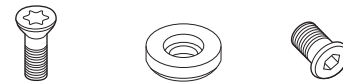
■ SCLC 95°



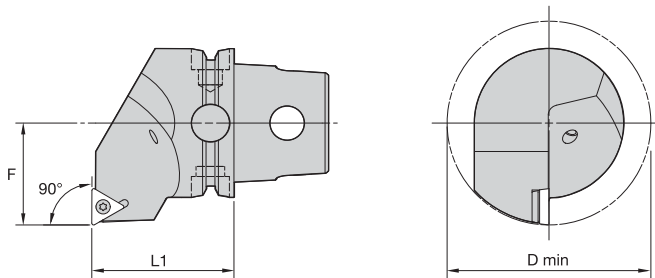
| order number | catalog number | L1 | | F | | D min | | gage insert | insert screw | shim | shim screw | kg | lbs |
|--------------|----------------|------------|-------|----|-------|-------|-------|--------------------|--------------|---------|------------|------|------|
| | | mm | in | mm | in | mm | in | | | | | | |
| | | right hand | | | | | | | | | | | |
| 2414906 | KM63TSSCLCR12 | 60 | 2.362 | 43 | 1.693 | 86 | 3.386 | CC..120408/CC..432 | MS1158 | SKCP453 | SRS4 | 1,14 | 2.52 |
| | | left hand | | | | | | | | | | | |
| 2414907 | KM63TSSCLCL12 | 60 | 2.362 | 43 | 1.693 | 86 | 3.386 | CC..120408/CC..432 | MS1158 | SKCP453 | SRS4 | 1,14 | 2.52 |



■ SRDC 0°



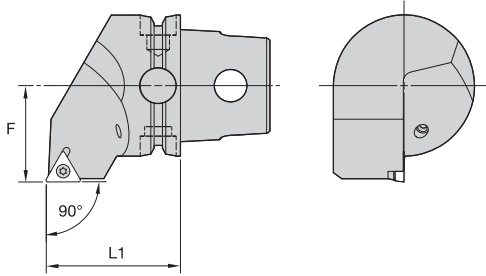
| order number | catalog number | L1 | | F | | CD | | gage insert | insert screw | shim | shim screw | kg | lbs |
|--------------|----------------|----|-------|----|------|----|-------|-------------|--------------|------------|------------|------|------|
| | | mm | in | mm | in | mm | in | | | | | | |
| 2414896 | KM63TSSRDCN16 | 60 | 2.362 | 8 | .315 | 33 | 1.299 | RC..1605M0 | MS1160 | SKRN160400 | SRS5 | 0,84 | 1.84 |



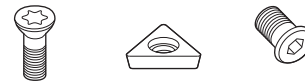
■ STFC 90°



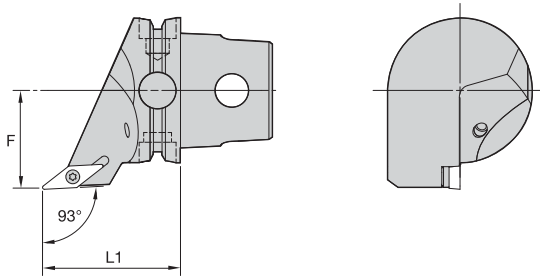
| order number | catalog number | L1 | | F | | D min | | gage insert | insert screw | shim | shim screw | kg | lbs |
|--------------|------------------------------|----|-------|----|-------|-------|-------|---------------------|--------------|---------|------------|------|------|
| | | mm | in | mm | in | mm | in | | | | | | |
| 2414899 | right hand KM63TSSSTFCR16 | 60 | 2.362 | 43 | 1.693 | 86 | 3.386 | TC..16T308/TC..3252 | MS1156 | SKTP343 | SRS3 | 1,23 | 2.72 |
| 2414900 | left hand KM63TSSSTFCL16 | 60 | 2.362 | 43 | 1.693 | 86 | 3.386 | TC..16T308/TC..3252 | MS1156 | SKTP343 | SRS3 | 1,23 | 2.72 |



■ STGC 90°



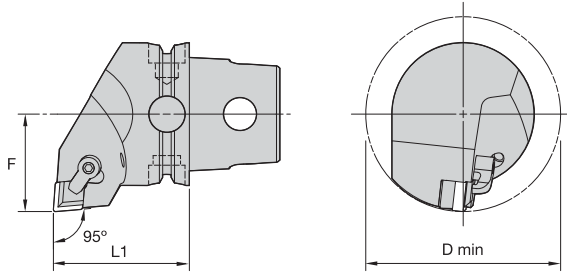
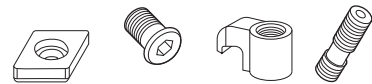
| order number | catalog number | L1 | | F | | gage insert | insert screw | shim | shim screw | kg | lbs |
|--------------|----------------|----|-------|----|-------|---------------------|--------------|---------|------------|------|------|
| | | mm | in | mm | in | | | | | | |
| | right hand | | | | | | | | | | |
| 2414903 | KM63TSSSTGCR16 | 60 | 2.362 | 43 | 1.693 | TC..16T308/TC..3252 | MS1156 | SKTP343 | SRS3 | 1,22 | 2.69 |
| | left hand | | | | | | | | | | |
| 2414904 | KM63TSSSTGCL16 | 60 | 2.362 | 43 | 1.693 | TC..16T308/TC..3252 | MS1156 | SKTP343 | SRS3 | 1,22 | 2.69 |



■ SVJB 93°

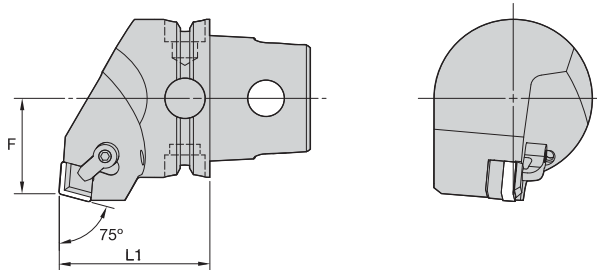


| order number | catalog number | L1 | | F | | gage insert | insert screw | shim | shim screw | kg | lbs |
|--------------|----------------|----|-------|----|-------|--------------------|--------------|---------|------------|------|------|
| | | mm | in | mm | in | | | | | | |
| | right hand | | | | | | | | | | |
| 2414905 | KM63TSSVJBR16 | 60 | 2.362 | 43 | 1.693 | VB..160408/VB..332 | MS1156 | SKVN343 | SRS3 | 0,92 | 2.02 |
| | left hand | | | | | | | | | | |
| 2257151 | KM63TSSVJBL16 | 60 | 2.362 | 43 | 1.693 | VB..160408/VB..332 | MS1156 | SKVN343 | SRS3 | 0,92 | 2.02 |


■ CCLN 95°


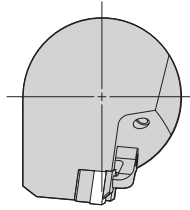
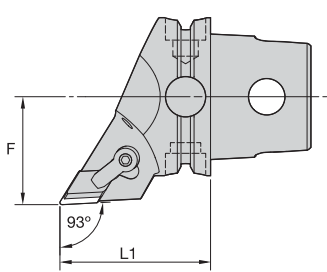
| order number | catalog number | L1 | | F | | D min | | gage insert | shim | shim screw | clamp | clamp screw | kg | lbs |
|-------------------|----------------|----|-------|----|-------|-------|-------|-------------------|---------|------------|-------|-------------|------|------|
| | | mm | in | mm | in | mm | in | | | | | | | |
| right hand | | | | | | | | | | | | | | |
| 3065821 | KM63TSCCLNR12 | 60 | 2.362 | 43 | 1.693 | 86 | 3.386 | CN..120408/CN.432 | ICSN442 | KMS4 | CKM20 | STCM11 | 1,23 | 2.70 |
| 3065883 | KM63TSCCLNR16 | 60 | 2.362 | 43 | 1.693 | 86 | 3.386 | CN..160612/CN.543 | ICSN533 | KMS5 | CKM20 | STCM11 | 1,21 | 2.68 |
| left hand | | | | | | | | | | | | | | |
| 3065820 | KM63TSCCLNL12 | 60 | 2.362 | 43 | 1.693 | 86 | 3.386 | CN..120408/CN.432 | ICSN442 | KMS4 | CKM20 | STCM11 | 1,23 | 2.71 |
| 3065822 | KM63TSCCLNL16 | 60 | 2.362 | 43 | 1.693 | 86 | 3.386 | CN..160612/CN.543 | ICSN533 | KMS5 | CKM20 | STCM11 | 1,21 | 2.68 |

NOTE: Chipbreakers must be ordered separately. See the Kennametal Innovations Master Catalog Cutting Tools 2013.


■ CCRN 75°


| order number | catalog number | L1 | | F | | gage insert | shim | shim screw | clamp | clamp screw | kg | lbs |
|-------------------|----------------|----|-------|----|-------|-------------------|---------|------------|-------|-------------|------|------|
| | | mm | in | mm | in | | | | | | | |
| right hand | | | | | | | | | | | | |
| 3065884 | KM63TSCCRNR12 | 60 | 2.362 | 38 | 1.496 | CN..120408/CN.432 | ICSN442 | KMS4 | CKM20 | STCM11 | 1,22 | 2.70 |
| left hand | | | | | | | | | | | | |
| 3065885 | KM63TSCCRNL12 | 60 | 2.362 | 38 | 1.496 | CN..120408/CN.432 | ICSN442 | KMS4 | CKM20 | STCM11 | 1,22 | 2.70 |
| 3065886 | KM63TSCCRNL16 | 60 | 2.362 | 38 | 1.496 | CN..160612/CN.543 | ICSN533 | KMS5 | CKM20 | STCM11 | 1,22 | 2.69 |

NOTE: Chipbreakers must be ordered separately. See the Kennametal Innovations Master Catalog Cutting Tools 2013.

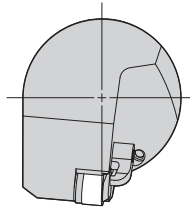
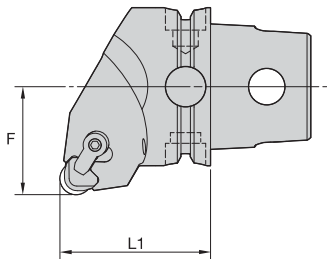


■ CDJN 93°

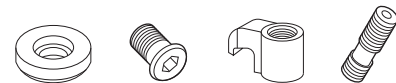


| order number | catalog number | L1 | | F | | gage insert | shim | shim screw | clamp | clamp screw | kg | lbs |
|--------------|------------------|----|-------|----|-------|-------------------|---------|------------|-------|-------------|------|------|
| | | mm | in | mm | in | | | | | | | |
| | right hand | | | | | | | | | | | |
| 3065887 | KM63TSCDJNR1504 | 60 | 2.362 | 43 | 1.693 | DN..150408/DN.432 | IDSN442 | KMS4 | CKM23 | STCM11 | 1,01 | 2.22 |
| | left hand | | | | | | | | | | | |
| 3065888 | KM63TSCDJNLR1504 | 60 | 2.362 | 43 | 1.693 | DN..150408/DN.432 | IDSN442 | KMS4 | CKM23 | STCM11 | 1,01 | 2.22 |

NOTE: Chipbreakers must be ordered separately. See the Kennametal Innovations Master Catalog Cutting Tools 2013.

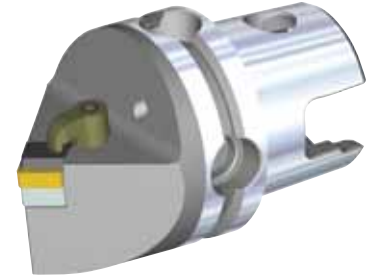
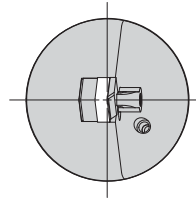
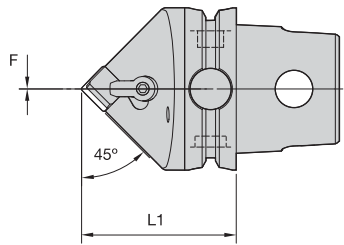


■ CRGN 0°

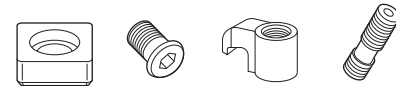


| order number | catalog number | L1 | | F | | gage insert | shim | shim screw | clamp | clamp screw | kg | lbs |
|--------------|----------------|----|-------|----|-------|----------------|--------|------------|-------|-------------|------|------|
| | | mm | in | mm | in | | | | | | | |
| | right hand | | | | | | | | | | | |
| 3065900 | KM63TSCRGNR12 | 60 | 2.362 | 43 | 1.693 | RN..1207/RN.45 | IRSN42 | KMS4 | CKM20 | STCM11 | 1,23 | 2.72 |
| | left hand | | | | | | | | | | | |
| 3065899 | KM63TSCRGNL12 | 60 | 2.362 | 43 | 1.693 | RN..1207/RN.45 | IRSN42 | KMS4 | CKM20 | STCM11 | 1,23 | 2.72 |

NOTE: Chipbreakers must be ordered separately. See the Kennametal Innovations Master Catalog Cutting Tools 2013.

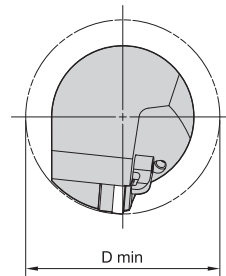
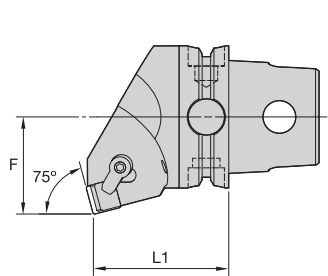


■ CSDN 45°

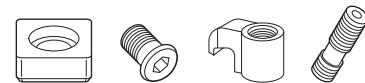


| order number | catalog number | L1 | | F | | gage insert | shim | shim screw | clamp | clamp screw | kg | lbs |
|--------------|----------------|-----------|-------|----|------|-------------------|---------|------------|-------|-------------|------|------|
| | | mm | in | mm | in | | | | | | | |
| | | left hand | | | | | | | | | | |
| 3065889 | KM63TSCSDNN12 | 60 | 2.362 | 0 | .000 | SN..120408/SN.432 | ISSN442 | KMS4 | CKM20 | STCM11 | 1,01 | 2.23 |
| 3065890 | KM63TSCSDNN15 | 60 | 2.362 | 0 | .000 | SN..150612/SN.543 | ISSN533 | KMS5 | CKM20 | STCM11 | 1,01 | 2.22 |

NOTE: Chipbreakers must be ordered separately. See the Kennametal Innovations Master Catalog Cutting Tools 2013.

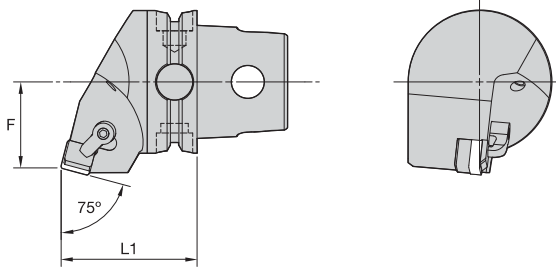


■ CSKN 75°



| order number | catalog number | L1 | | F | | D min | | gage insert | shim | shim screw | clamp | clamp screw | kg | lbs |
|--------------|----------------|------------|-------|----|-------|-------|-------|-------------------|---------|------------|-------|-------------|------|------|
| | | mm | in | mm | in | mm | in | | | | | | | |
| | | right hand | | | | | | | | | | | | |
| 3065895 | KM63TSCSKNR12 | 60 | 2.362 | 43 | 1.693 | 86 | 3.386 | SN..120408/SN.432 | ISSN442 | KMS4 | CKM20 | STCM11 | 1,32 | 2.91 |
| | | left hand | | | | | | | | | | | | |
| 3065896 | KM63TSCSKNL12 | 60 | 2.362 | 43 | 1.693 | 86 | 3.386 | SN..120408/SN.432 | ISSN442 | KMS4 | CKM20 | STCM11 | 1,32 | 2.91 |

NOTE: Chipbreakers must be ordered separately. See the Kennametal Innovations Master Catalog Cutting Tools 2013.

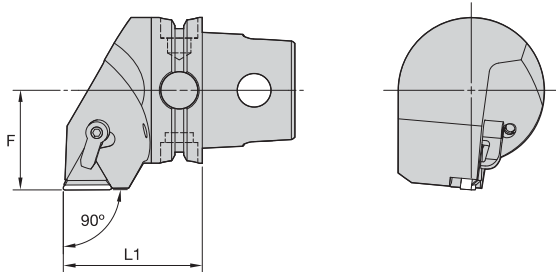


■ CSRN 75°



| order number | catalog number | L1 | | F | | gage insert | shim | shim screw | clamp | clamp screw | kg | lbs |
|--------------|----------------|------------|-------|----|-------|-------------------|---------|------------|-------|-------------|------|------|
| | | mm | in | mm | in | | | | | | | |
| | | right hand | | | | | | | | | | |
| 3065891 | KM63TSCSRNR12 | 60 | 2.362 | 38 | 1.496 | SN..120408/SN.432 | ISSN442 | KMS4 | CKM20 | STCM11 | 1,20 | 2.64 |
| 3065893 | KM63TSCSRNR15 | 60 | 2.362 | 38 | 1.496 | SN..150612/SN.543 | ISSN533 | KMS5 | CKM20 | STCM11 | 1,19 | 2.63 |
| | | left hand | | | | | | | | | | |
| 3065892 | KM63TSCSRNL12 | 60 | 2.362 | 38 | 1.496 | SN..120408/SN.432 | ISSN442 | KMS4 | CKM20 | STCM11 | 1,20 | 2.64 |
| 3065894 | KM63TSCSRNL15 | 60 | 2.362 | 38 | 1.496 | SN..150612/SN.543 | ISSN533 | KMS5 | CKM20 | STCM11 | 1,19 | 2.63 |

NOTE: Chipbreakers must be ordered separately. See the Kennametal Innovations Master Catalog Cutting Tools 2013.

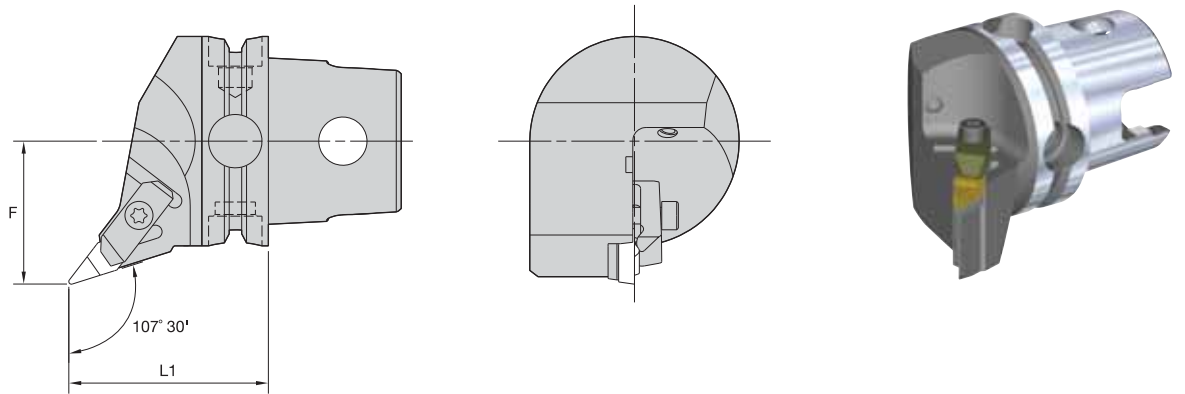


■ CTGN 90°



| order number | catalog number | L1 | | F | | gage insert | shim | shim screw | clamp | clamp screw | kg | lbs |
|--------------|----------------|------------|-------|----|-------|-------------------|---------|------------|-------|-------------|------|------|
| | | mm | in | mm | in | | | | | | | |
| | | right hand | | | | | | | | | | |
| 3065897 | KM63TCTGNR22 | 60 | 2.362 | 43 | 1.693 | TN..220408/TN.432 | ITSN433 | KMS4 | CKM23 | STCM11 | 1,25 | 2.75 |
| | | left hand | | | | | | | | | | |
| 3065898 | KM63TCTGNL22 | 60 | 2.362 | 43 | 1.693 | TN..220408/TN.432 | ITSN433 | KMS4 | CKM23 | STCM11 | 1,24 | 2.73 |

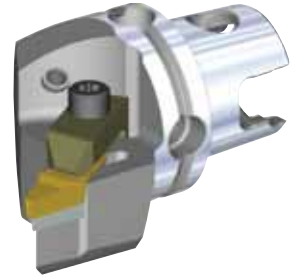
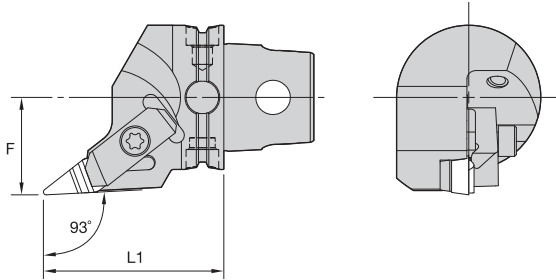
NOTE: Chipbreakers must be ordered separately. See the Kennametal Innovations Master Catalog Cutting Tools 2013.


NVHC 107° 30' Metric

| order number | catalog number | F | | L1 | | gage insert | kg | lbs |
|--------------|----------------|----|-------|----|-------|--------------------|------|------|
| | | mm | in | mm | in | | | |
| 2265319 | right hand | 43 | 1.693 | 60 | 2.362 | VCGR160408/VPGR332 | 1,05 | 2.31 |
| | KM63TSNVHCR16 | | | | | | | |
| 2265320 | left hand | 43 | 1.693 | 60 | 2.362 | VCGR160408/VPGR332 | 1,05 | 2.31 |
| | KM63TSNVHCL16 | | | | | | | |

Spare Parts





| catalog number | | | | |
|-----------------------------|-------|------------|-------|-------------|
| | shim | shim screw | clamp | clamp screw |
| right hand KM63TSNVHCR16 | SM812 | MS959 | CM113 | MS1489 |
| left hand KM63TSNVHCL16 | SM812 | MS959 | CM114 | MS1489 |



■ NVJC 93°

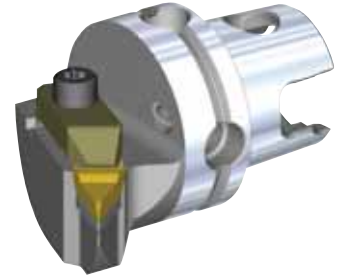
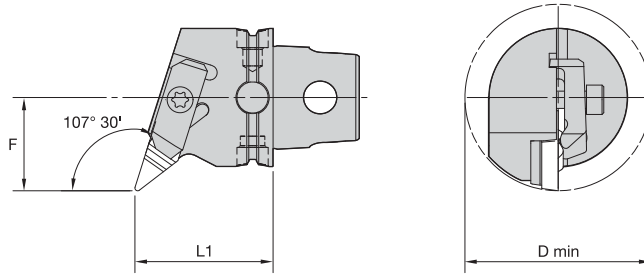
| order number | catalog number | F | | L1 | | gage insert | kg | lbs |
|--------------|-----------------------------|----|-------|----|-------|--------------------|------|------|
| | | mm | in | mm | in | | | |
| 2265321 | right hand KM63TSNVJCR16 | 43 | 1.693 | 60 | 2.362 | VCGR160408/VPGR332 | 0,94 | 2.07 |
| 2265322 | left hand KM63TSNVJCL16 | 43 | 1.693 | 60 | 2.362 | VCGR160408/VPGR332 | 0,94 | 2.07 |

■ Spare Parts

| catalog number |  shim |  shim screw |  clamp |  clamp screw |
|-----------------------------|--|--|---|---|
| right hand KM63TSNVJCR16 | SM812 | MS959 | CM113 | MS1489 |
| left hand KM63TSNVJCL16 | SM812 | MS959 | CM114 | MS1489 |





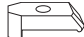

KM63TS Internal Cutting Units

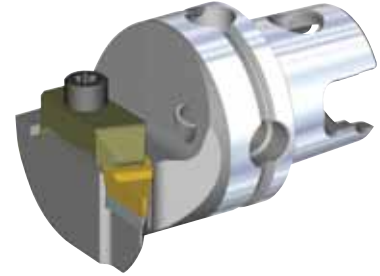
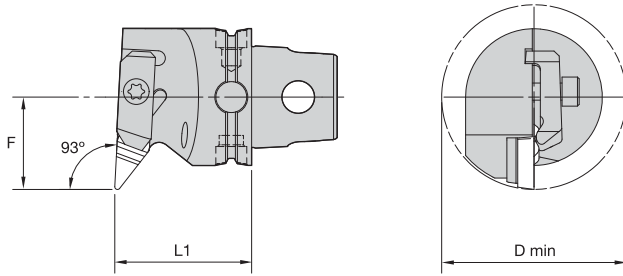


■ NVQC 107° 30'

| order number | catalog number | D min | | F | | L1 | | gage insert | kg | lbs |
|--------------|----------------|-------|------|----|-------|----|-------|--------------------|------|------|
| | | mm | in | mm | in | mm | in | | | |
| 2265323 | right hand | 86 | 3.39 | 43 | 1.693 | 60 | 2.362 | VCGR160408/VPGR332 | 1,10 | 2.42 |
| | KM63TSNVQCR16 | | | | | | | | | |
| 2265324 | left hand | 86 | 3.39 | 43 | 1.693 | 60 | 2.362 | VCGR160408/VPGR332 | 1,10 | 2.42 |
| | KM63TSNVQCL16 | | | | | | | | | |

■ Spare Parts



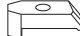

| catalog number |  shim |  shim screw |  clamp |  clamp screw |
|-----------------------------|--|--|---|---|
| right hand KM63TSNVQCR16 | SM812 | MS959 | CM113 | MS1489 |
| left hand KM63TSNVQCL16 | SM812 | MS959 | CM114 | MS1489 |

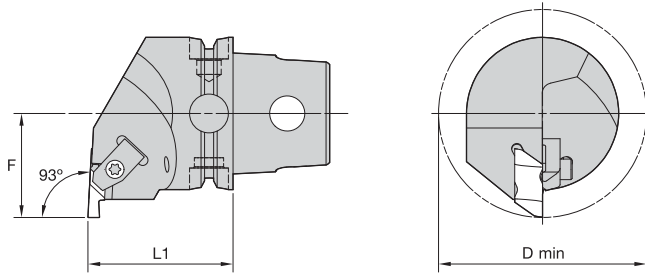


■ NVUC 93°

| order number | catalog number | D min | | F | | L1 | | gage insert | kg | lbs |
|--------------|----------------|------------|------|----|-------|----|-------|--------------------|------|------|
| | | mm | in | mm | in | mm | in | | | |
| | | right hand | | | | | | | | |
| 2265325 | KM63TSNVUCR16 | 86 | 3.39 | 43 | 1.693 | 60 | 2.362 | VCGR160408/VPGR332 | 1,28 | 2.83 |
| | | left hand | | | | | | | | |
| 2265326 | KM63TSNVUCL16 | 86 | 3.39 | 43 | 1.693 | 60 | 2.362 | VCGR160408/VPGR332 | 1,28 | 2.83 |

■ Spare Parts

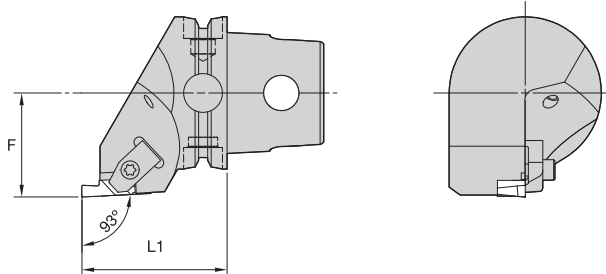
| catalog number |  |  |  |  |
|----------------|---|---|---|---|
| | shim | shim screw | clamp | clamp screw |
| | right hand | | | |
| KM63TSNVUCR16 | SM812 | MS959 | CM113 | MS1489 |
| | left hand | | | |
| KM63TSNVUCL16 | SM812 | MS959 | CM114 | MS1489 |



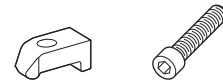
■ NE 93°



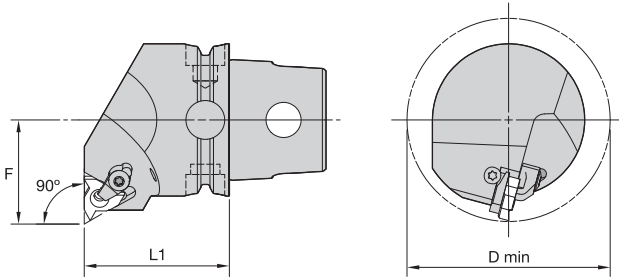
| order number | catalog number | L1 | | F | | D min | | gage insert | clamp | clamp screw | kg | lbs |
|-------------------|----------------|----|-------|----|-------|-------|-------|-------------|-------|-------------|------|------|
| | | mm | in | mm | in | mm | in | | | | | |
| right hand | | | | | | | | | | | | |
| 2265406 | KM63TSNER3 | 60 | 2.362 | 43 | 1.693 | 86 | 3.386 | NG3L | CM73 | MS1489 | 1,19 | 2.63 |
| 2265408 | KM63TSNER4 | 60 | 2.362 | 43 | 1.693 | 86 | 3.386 | NG4L | CM73 | MS1489 | 1,21 | 2.66 |
| 2265410 | KM63TSNER5 | 60 | 2.362 | 43 | 1.693 | 86 | 3.386 | NG5L | CM81 | MS1490 | 1,15 | 2.55 |
| left hand | | | | | | | | | | | | |
| 2265407 | KM63TSNEL3 | 60 | 2.362 | 43 | 1.693 | 86 | 3.386 | NG3R | CM72 | MS1489 | 1,19 | 2.63 |
| 2265409 | KM63TSNEL4 | 60 | 2.362 | 43 | 1.693 | 86 | 3.386 | NG4R | CM72 | MS1489 | 1,21 | 2.66 |
| 2265411 | KM63TSNEL5 | 60 | 2.362 | 43 | 1.693 | 86 | 3.386 | NG5R | CM80 | MS1490 | 1,18 | 2.60 |



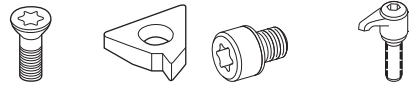
■ NS 93°



| order number | catalog number | L1 | | F | | gage insert | clamp | clamp screw | kg | lbs |
|-------------------|----------------|----|-------|----|-------|-------------|-------|-------------|------|------|
| | | mm | in | mm | in | | | | | |
| right hand | | | | | | | | | | |
| 2265412 | KM63TSNSR3 | 60 | 2.362 | 43 | 1.693 | NG3R | CM72 | MS1489 | 1,02 | 2.26 |
| 2265414 | KM63TSNSR4 | 60 | 2.362 | 43 | 1.693 | NG4R | CM72 | MS1489 | 1,06 | 2.34 |
| left hand | | | | | | | | | | |
| 2265413 | KM63TSNSL3 | 60 | 2.362 | 43 | 1.693 | NG3L | CM73 | MS1489 | 1,02 | 2.26 |
| 2265415 | KM63TSNSL4 | 60 | 2.362 | 43 | 1.693 | NG4L | CM73 | MS1489 | 1,06 | 2.34 |

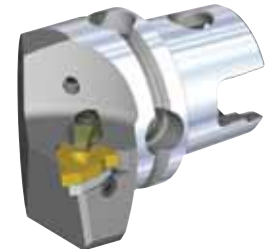
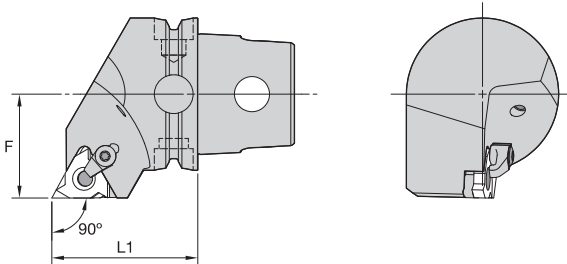


■ LSE-N 90° • Internal Only

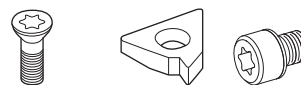


| order number | catalog number | L1 | | F | | D min | | gage insert | insert screw | shim | shim screw | clamp assembly | kg | lbs |
|-------------------|----------------|----|-------|----|-------|-------|-------|-------------|--------------|-------|------------|----------------|------|------|
| | | mm | in | mm | in | mm | in | | | | | | | |
| right hand | | | | | | | | | | | | | | |
| 2265416 | KM63TSLSER16N | 60 | 2.362 | 43 | 1.693 | 86 | 3.386 | LT16NR | SSA3T | SMYI3 | SSY3T | CKC3 | 1,34 | 2.96 |
| 2265418 | KM63TSLSER22N | 60 | 2.362 | 43 | 1.693 | 86 | 3.386 | LT22NR | SSA4T | SMYI4 | SSY4T | CKC4 | 1,32 | 2.92 |
| 3959387 | KM63TSLSER27N | 60 | 2.362 | 43 | 1.693 | 86 | 3.386 | LT27NR | SSA5T | SMYI5 | SSY5T | CKC5 | 1,38 | 3.05 |
| left hand | | | | | | | | | | | | | | |
| 2265417 | KM63TSLSEL16N | 60 | 2.362 | 43 | 1.693 | 86 | 3.386 | LT16NL | SSA3T | SMYE3 | SSY3T | CKC3 | 1,34 | 2.96 |
| 2265419 | KM63TSLSEL22N | 60 | 2.362 | 43 | 1.693 | 86 | 3.386 | LT22NL | SSA4T | SMYE4 | SSY4T | CKC4 | 1,32 | 2.92 |
| 3959386 | KM63TSLSEL27N | 60 | 2.362 | 43 | 1.693 | 86 | 3.386 | LT27NL | SSA5T | SMYE5 | SSY5T | CKC5 | 1,36 | 3.00 |

NOTE: Cutting units are supplied with insert screw and clamp assembly. However, tools are designed to use either the insert screw or the clamp assembly, not both.

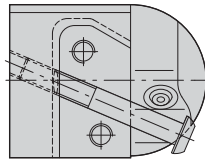
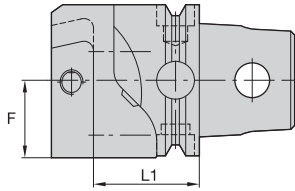


■ LSS 90°



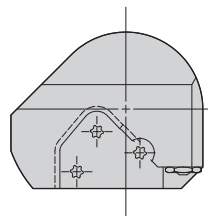
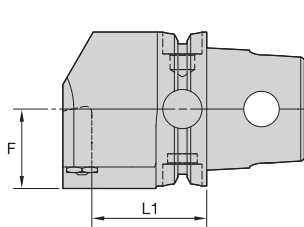
| order number | catalog number | L1 | | F | | gage insert | insert screw | shim | shim screw | clamp assembly | kg | lbs |
|-------------------|----------------|----|-------|----|-------|-------------|--------------|-------|------------|----------------|------|------|
| | | mm | in | mm | in | | | | | | | |
| right hand | | | | | | | | | | | | |
| 2265420 | KM63TSLSSR16 | 60 | 2.362 | 43 | 1.693 | LT16ER | SSA3T | SMYE3 | SSY3T | CKC3 | 1,21 | 2.68 |
| 2265422 | KM63TSLSSR22 | 60 | 2.362 | 43 | 1.693 | LT22ER | SSA4T | SMYE4 | SSY4T | CKC4 | 1,20 | 2.64 |
| 3959389 | KM63TSLSSR27 | 60 | 2.362 | 43 | 1.693 | LT27ER | SSA5T | SMYE5 | SSY5T | CKC5 | 1,19 | 2.61 |
| left hand | | | | | | | | | | | | |
| 2265421 | KM63TSLSSL16 | 60 | 2.362 | 43 | 1.693 | LT16EL | SSA3T | SMYI3 | SSY3T | CKC3 | 1,21 | 2.66 |
| 2265423 | KM63TSLSSL22 | 60 | 2.362 | 43 | 1.693 | LT22EL | SSA4T | SMYI4 | SSY4T | CKC4 | 1,20 | 2.64 |
| 3959388 | KM63TSLSSL27 | 60 | 2.362 | 43 | 1.693 | LT27EL | SSA5T | SMYI5 | SSY5T | CKC5 | 1,19 | 2.62 |

NOTE: Cutting units are supplied with insert screw and clamp assembly. However, tools are designed to use either the insert screw or the clamp assembly, not both.


■ KGME • End Mount

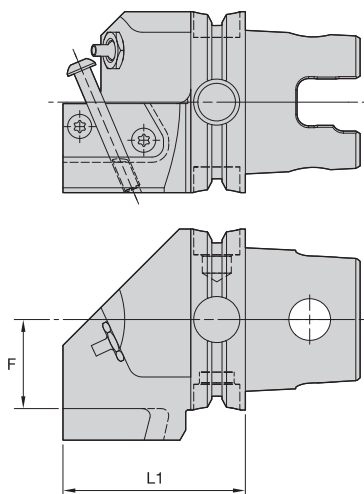
| order number | catalog number | L1 | | F | | cartridge size | blade screw | clamp screw | nozzle | kg |
|--------------|----------------|----|------|------|-------|----------------|-------------|-------------|--------|------|
| | | mm | in | mm | in | | | | | |
| | right hand | | | | | | | | | |
| 2265404 | KM63TSKGMER50 | 48 | 1.89 | 32,5 | 1.280 | 50 | MS1162 | MS2002 | — | 1,21 |
| | left hand | | | | | | | | | |
| 2265405 | KM63TSKGMEL50 | 48 | 1.89 | 32,5 | 1.280 | 50 | MS1162 | MS2002 | — | 1,21 |

NOTE: For A3/A4 modular blades, see the Kennametal Innovations Master Catalog Cutting Tools 2013.
 Right-hand cutting units use left-hand blades.


■ KGME • End Mount

| order number | catalog number | L1 | | F | | cartridge size | blade screw | nozzle | kg |
|--------------|----------------|----|------|------|-------|----------------|-------------|----------|------|
| | | mm | in | mm | in | | | | |
| | right hand | | | | | | | | |
| 3590205 | KM63TSKGMER65 | 47 | 1.85 | 32,5 | 1.280 | 65 | MS1163 | PMT04525 | 1,68 |
| | left hand | | | | | | | | |
| 3590206 | KM63TSKGMEL65 | 47 | 1.85 | 32,5 | 1.280 | 65 | MS1163 | PMT04525 | 1,68 |

NOTE: For A3/A4 modular blades, see the Kennametal Innovations Master Catalog Cutting Tools 2013.
 Right-hand cutting units use left-hand blades.

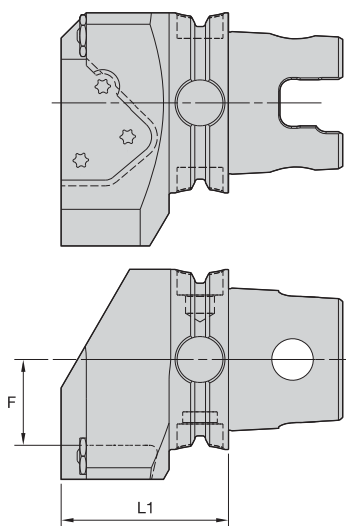


■ **KGMS • Side Mount**

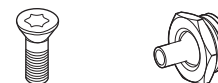


| order number | catalog number | L1 | | F | | cartridge size | blade screw | nozzle | clamp screw | kg |
|--------------|----------------------|------|-------|----|-------|----------------|-------------|----------|-------------|------|
| | | mm | in | mm | in | | | | | |
| | right hand | | | | | | | | | |
| 2255824 | KM63TSKGMSR50 | 63,5 | 2.500 | 31 | 1.221 | 50 | MS1162 | PMT04510 | MS2002 | 1,34 |
| | left hand | | | | | | | | | |
| 2255543 | KM63TSKGMSL50 | 63,5 | 2.500 | 31 | 1.221 | 50 | MS1162 | PMT04510 | MS2002 | 1,34 |

NOTE: For A3/A4 modular blades, see the Kennametal Innovations Master Catalog Cutting Tools 2013.
Right-hand cutting units use right-hand blades.



■ **KGMS • Side Mount**

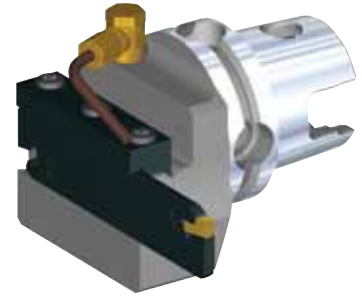
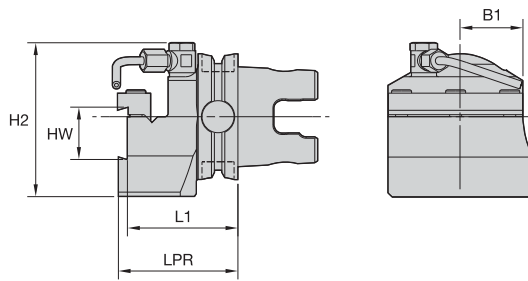


| order number | catalog number | L1 | | F | | cartridge size | blade screw | nozzle | kg |
|--------------|----------------------|------|-------|----|-------|----------------|-------------|----------|------|
| | | mm | in | mm | in | | | | |
| | right hand | | | | | | | | |
| 3590203 | KM63TSKGMSR65 | 58,5 | 2.303 | 30 | 1.181 | 65 | MS1163 | PMT04525 | 1,74 |
| | left hand | | | | | | | | |
| 3590204 | KM63TSKGMSL65 | 58,5 | 2.303 | 30 | 1.181 | 65 | MS1163 | PMT04525 | 1,74 |

NOTE: For A3/A4 modular blades, see the Kennametal Innovations Master Catalog Cutting Tools 2013.
Right-hand cutting units use right-hand blades.

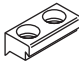


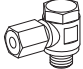


KM63TS Cutting Units

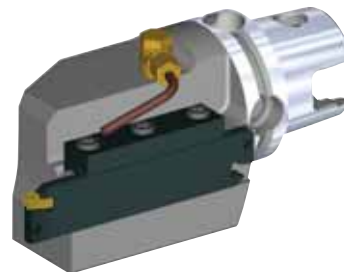
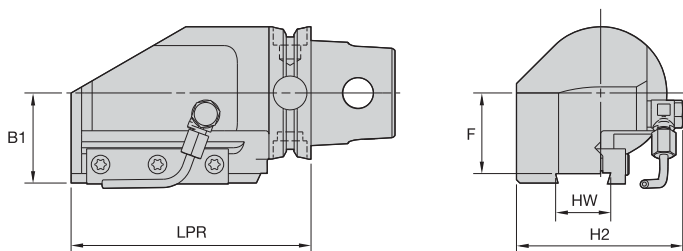

■ BE • End Mount

| order number | catalog number | L1 | | LPR | | H2 | | HW | | B1 | | cartridge size | cartridge 1 | kg |
|--------------|-------------------|------|-------|------|-------|----|------|----|-------|------|-------|----------------|-------------|------|
| | | mm | in | mm | in | mm | in | mm | in | mm | in | | | |
| | right hand | | | | | | | | | | | | | |
| 2265372 | KM63TSBER4 | 55,3 | 2.177 | 59,8 | 2.354 | 63 | 2.48 | 26 | 1.024 | 31,5 | 1.240 | 26 | A2BN..26... | 1,68 |
| | left hand | | | | | | | | | | | | | |
| 2265393 | KM63TSBEL4 | 55,3 | 2.177 | 59,8 | 2.354 | 63 | 2.48 | 26 | 1.024 | 31,5 | 1.240 | 26 | A2BNSN26... | 1,68 |

■ Spare Parts

| catalog number |  |  |  |  |
|---------------------------------|---|---|---|---|
| | clamp | clamp screw | coolant tube | coolant swivel base |
| right hand KM63TSBER4 | CGS4 | MS1595 | 12649910900 | 12649910800 |
| left hand KM63TSBEL4 | CGS4 | MS1595 | 12649910900 | 12649910800 |

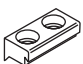


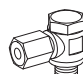
NOTE: Blades are ordered separately. See the Kennametal Innovations Master Catalog Cutting Tools 2013.



■ **BS • Side Mount**

| order number | catalog number | B1 | | LPR | | F | | H2 | | HW | | cartridge size | cartridge 1 | kg |
|--------------|-------------------|-------|-------|--------|-------|-------|-------|-------|-------|-------|-------|----------------|--------------------|------|
| | | mm | in | mm | in | mm | in | mm | in | mm | in | | | |
| | right hand | | | | | | | | | | | | | |
| 2265394 | KM63TSBSR4 | 42,80 | 1.685 | 114,00 | 4.488 | 38,30 | 1.508 | 79,00 | 3.110 | 26,00 | 1.024 | 26 | A2BNSN26... | 3,00 |
| 2265396 | KM63TSBSR5 | 42,80 | 1.685 | 134,55 | 5.297 | 37,30 | 1.469 | 84,00 | 3.307 | 32,00 | 1.260 | 32 | A2BNSN32... | 3,73 |
| | left hand | | | | | | | | | | | | | |
| 2265395 | KM63TSBSL4 | 42,80 | 1.685 | 114,00 | 4.488 | 38,30 | 1.508 | 79,00 | 3.110 | 26,00 | 1.024 | 26 | A2BNSN26... | 3,00 |
| 2265397 | KM63TSBSL5 | 42,80 | 1.685 | 134,55 | 5.299 | 37,30 | 1.469 | 84,00 | 3.307 | 32,00 | 1.260 | 32 | A2BNSN32... | 3,73 |

■ **Spare Parts**

| catalog number |  clamp |  clamp screw |  coolant tube |  coolant swivel base |
|-------------------|---|---|--|---|
| right hand | | | | |
| KM63TSBSR4 | CGS4 | MS1595 | 12649910900 | 12649910800 |
| KM63TSBSR5 | CGS5 | MS1595 | 12649910900 | 12649910800 |
| left hand | | | | |
| KM63TSBSL4 | CGS4 | MS1595 | 12649910900 | 12649910800 |
| KM63TSBSL5 | CGS5 | MS1595 | 12649910900 | 12649910800 |

NOTE: Blades are ordered separately. See the Kennametal Innovations Master Catalog Cutting Tools 2013.