



ERICKSON™

Superior Gripping

For bearing milling chucks when grip counts. ERICKSON — the industry name you can trust.

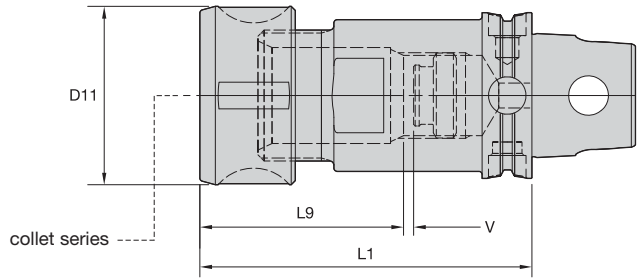
- Heavy and fine milling applications.
- Great accuracy $\leq 5\mu\text{m}$ (.0002") at 3 x D and best gripping system.
- Pre-balanced to high specifications.
- Versatile as a collet chuck with the use of reduction sleeves.

Visit www.kennametal.com or contact your local Authorized Kennametal Distributor.

www.kennametal.com



- Grip 1:1.



DA collet series	Collet Capacity			
	mm		inch	
	min	max	min	max
DA200	0.2	10,0	1/64	25/64
DA180	2.2	20,0	1/64	3/4

■ Collet Chuck • Round Nut

order number	catalog number	collet series	D11		L1		L9		V		kg	lbs
			mm	in	mm	in	mm	in	mm	in		
3789365	KM50TSDA208060M	DA200	28	1.10	60	2.362	35	1.38	8	.32	0,48	1.05
3789364	KM50TSDA188075M	DA180	43	1.69	75	2.953	49	1.93	5	.20	0,69	1.52

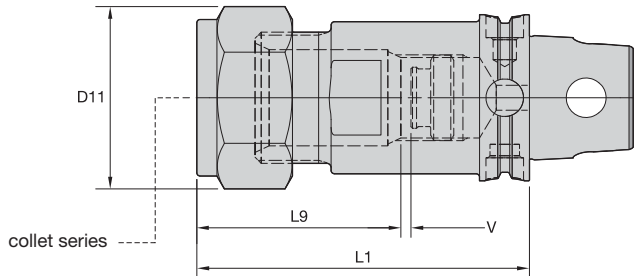
■ Spare Parts



catalog number	locknut	wrench	Nm	ft. lbs.	stop screw	wrench size stop screw
KM50TSDA208060M	LNA208RM	—	32-40	45-55	SS038031G	2mm & 5/64
KM50TSDA188075M	LNA188M	HSW45M	60-75	80-100	SS081041G	4mm & 5/32

(continued)

(Collet Chuck continued)



KM50TS Shank Tools

DA collet series	Collet Capacity			
	mm		inch	
	min	max	min	max
DA200	0,2	10,0	1/64	25/64
DA180	2,2	20,0	1/64	3/4

■ Collet Chuck • Hex Nut

order number	catalog number	collet series	D11		L1		L9		V		kg	lbs
			mm	in	mm	in	mm	in	mm	in		
3789365	KM50TSDA208060M	DA200	28	1.10	60	2.362	35	1.38	8	.32	0,48	1.05
3789364	KM50TSDA188075M	DA180	43	1.69	75	2.953	49	1.93	5	.20	0,69	1.52

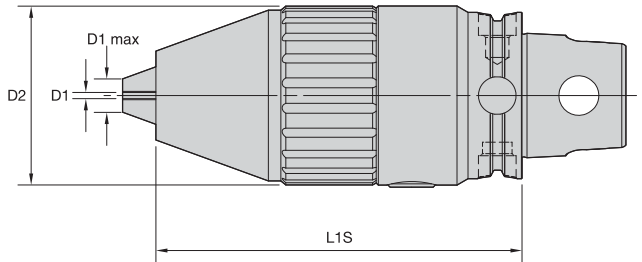
■ Spare Parts



catalog number	locknut	wrench	Nm	ft. lbs.	stop screw	wrench size stop screw
KM50TSDA208060M	LNA208RM	—	32-40	45-55	SS038031G	2 mm & 5/64
KM50TSDA188075M	LNA188M	HSW45M	60-75	80-100	SS081041G	4 mm & 5/32

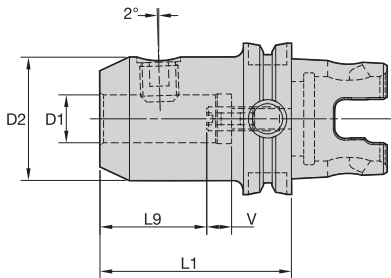
NOTE: Tighten locknut to the recommended tightening torque.
 Collet chuck technical section, see page M98.
 Supplied with locknut and stop screw.
 Locknut wrench must be ordered separately.
 Stop screw coolant caps are available and must be ordered separately; see pages L34–L35.
 DA standard straight-bore collets, see page J62.
 DA non-pullout collets, see pages J65–J68.

- Activation size is 6mm.
- Activation wrench included.
- Wrench reorder number is 170.136.



■ RDC • Drill Chuck

order number	catalog number	D1		D1 max		D2		L1S	
		mm	in	mm	in	mm	in	mm	in
4053779	KM50TSRDC16106M	3	.098	16	.630	56	2.205	106,0	4.055

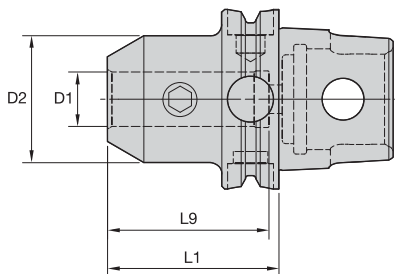


■ WN • Whistle Notch Adapter



order number	catalog number	D1	D2	L1	L9	V	lock screw	wrench size lock screw	Nm	stop screw	wrench size stop screw	kg	lbs
3795102	KM50TSWN06065M	6	25	65	30	10	SS03M012	3mm	7	571.060	2,5mm	0,49	1.07
3795103	KM50TSWN08065M	8	28	65	30	10	SS03M014	4mm	15	571.067	3mm	0,53	1.16
3795104	KM50TSWN10070M	10	35	70	35	10	SS03M018	5mm	25	571.068	4mm	0,66	1.46
3795105	KM50TSWN12080M	12	42	80	40	10	SS03M023	6mm	35	571.074	5mm	0,91	2.00
3795106	KM50TSWN14080M	14	44	80	40	10	SS03M023	6mm	35	571.074	5mm	0,95	2.10
3795107	KM50TSWN16085M	16	48	85	43	10	SS03M025	6mm	50	571.075	6mm	1,13	2.49
3795108	KM50TSWN18085M	18	50	85	43	10	SS03M025	6mm	50	571.075	6mm	1,18	2.61
3795109	KM50TSWN20095M	20	52	95	45	10	SS03M026	8mm	95	571.076	6mm	1,69	3.05
3795110	KM50TSWN25100M	25	65	100	50	10	SS03M027	10mm	135	571.077	6mm	2,06	4.53
3795111	KM50TSWN32105M	32	72	105	54	10	SS03M029	10mm	160	571.077	6mm	2,50	5.51

NOTE: Do not overtighten lock screw; use torque recommendations above.
Supplied with lock screw and stop screw.
Lock screw and stop screw wrenches are not included.


EM • Metric


order number	catalog number	D1	D2	L1	L9	lock screw	wrench size lock screw	Nm	kg
3812617	KM50TSEM10050M	10	35	50	45	SS03M018	5mm	25	0,53
3812618	KM50TSEM12055M	12	42	55	50	SS03M023	6mm	35	0,65
3812619	KM50TSEM16060M	16	48	60	53	SS03M025	6mm	50	0,79
3812620	KM50TSEM20060M	20	52	60	55	SS03M026	8mm	95	0,84
3812621	KM50TSEM25080M	25	65	80	60	SS03M027	10mm	135	1,59
3812622	KM50TSEM32085M	32	72	85	65	SS03M029	10mm	160	1,94

EM • Inch


order number	catalog number	D1	D2	L1	L9	lock screw	wrench size lock screw	ft. lbs.	lbs
3812635	KM50TSEM038197	3/8	1.00	1.969	1.73	ELS038031PKG	3/16	15	.95
3812636	KM50TSEM050216	1/2	1.38	2.165	1.97	ELS044038PKG	7/32	20	1.16
3812637	KM50TSEM062236	5/8	1.63	2.362	2.09	ELS056050PKG	1/4	40	1.43
3812638	KM50TSEM075236	3/4	1.75	2.362	2.22	ELS062050PKG	5/16	70	1.48
3812639	KM50TSEM100335	1	2.00	3.347	2.56	ELS075056PKG	3/8	110	2.38
3812640	KM50TSEM125335	1 1/4	2.50	3.347	2.51	ELS075056PKG	3/8	110	3.31

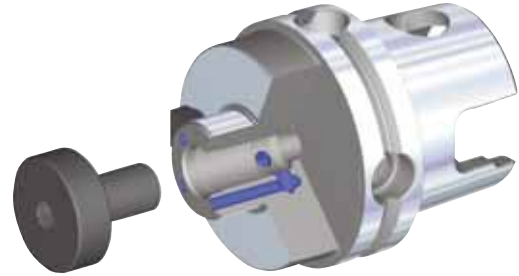
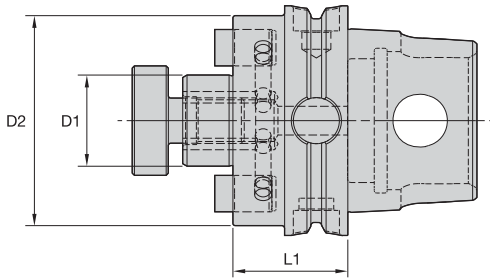
NOTE: Do not overtighten lock screw; use torque recommendations above.
 Supplied with lock screw.
 Lock screw wrench not included.

KM50TS™ Shank Tools

SMC Shell Mill Adapters with Through Coolant



KM50TS Shank Tools



■ SMC • Metric



order number	catalog number	D1	D2	L1	lock screw	drive key	wrench size lock screw	kg
3950842	KM50TSSMC22028M	22	49	28	MS1234	KDK22M	8mm	0,54
3950913	KM50TSSMC27032M	27	60	32	KLSS27M	KDK27M	10mm	0,77
3950914	KM50TSSMC32040M	32	78	40	KLSS32M	KDK32M	14mm	1,30

■ SMC/SM2C-KM • Inch

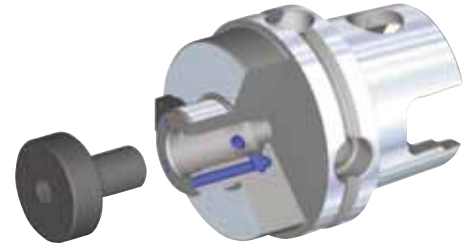
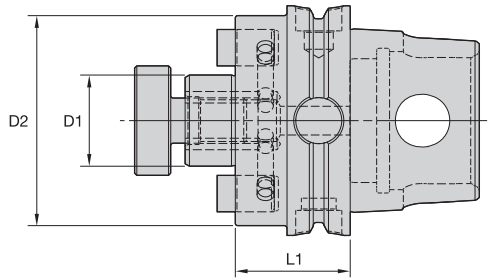


order number	catalog number	D1	D2	L1	lock screw	drive key	wrench size lock screw	lbs
3950836	KM50TSSMC050102	1/2	1.44	1.024	KLS05	KDK04	3/16	.92
3950838	KM50TSSM2C075102	3/4	1.46	1.024	KLS07	—	1/4	1.02
3950837	KM50TSSMC075102	3/4	1.75	1.024	KLS07	KDK05	3/16	1.08
3950840	KM50TSSM2C100126	1	2.19	1.260	KLS10	KDK06	5/16	1.53
3950839	KM50TSSMC100126	1	2.75	1.260	KLS10	KDK06	5/16	1.81
3950841	KM50TSSMC125157	1 1/4	2.88	1.575	KLS12	KDK08	5/16	2.60

NOTE: Do not overtighten lock screw.
 Supplied with lock screw and drive keys.
 Interchangeable coolant-style lock screws are available and must be ordered separately; see page L38.
 Lock screw wrench not included.



KM50TS Shank Tools

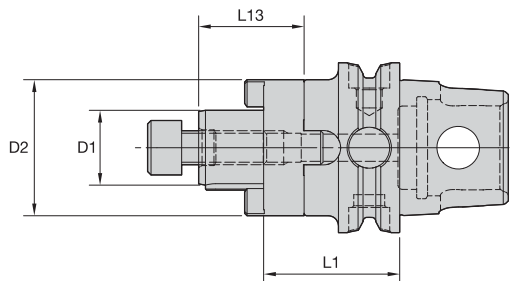


■ SM2C • Inch

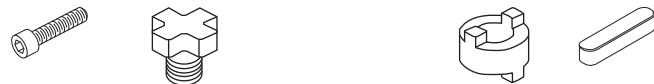


order number	catalog number	D1	D2	L1	lock screw	drive key	wrench size lock screw	lbs.
3950838	KM50TSSM2C075102	3/4	1.46	1.024	KLS07	—	1/4	1.02
3950840	KM50TSSM2C100126	1	2.19	1.260	KLS10	KDK06	5/16	1.53

NOTE: Do not overtighten lock screw.
Supplied with lock screw and drive keys.
Lock screw wrench not included.

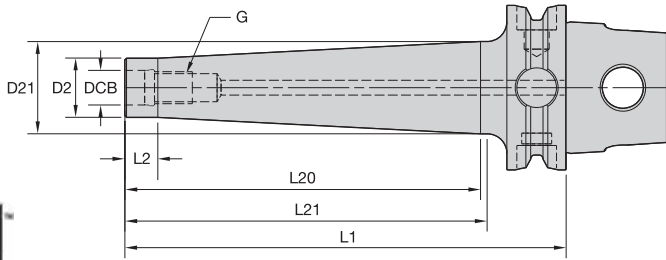


■ CS • Metric



order number	catalog number	D1	D2	L1	L13	lock screw	lock screw	wrench size lock screw	combi driver ring	combi drive key	kg
3862017	KM50TSCS22040M	22	40	40	31	MS1234	—	8 mm	CDR22M	CDK22M	0,61
3862018	KM50TSCS27042M	27	48	42	33	—	KLS27M	—	CDR27M	CDK27M	0,79
3862019	KM50TSCS32050M	32	58	50	38	—	KLS32M	—	CDR32M	CDK32M	1,19

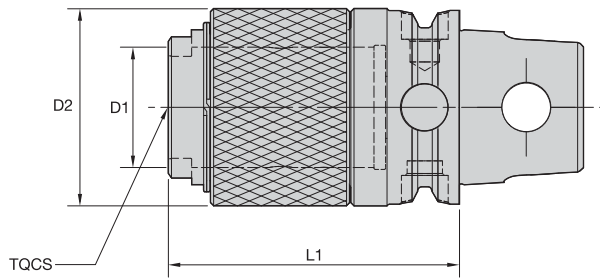
NOTE: Do not overtighten lock screw.
Supplied with lock screw, drive ring, and key.
Lock screw wrench not included.



■ **STC**

order number	catalog number	DCB	G	D2	D21	L1	L2	L20	L21	kg
4137801	KM50TSSTC06059M	6,5	M6	10	11	59	10	35	35	0,36
4137802	KM50TSSTC06084M	6,5	M6	10	12	84	10	60	60	0,37
4137823	KM50TSSTC06109M	6,5	M6	10	14	109	10	85	85	0,40
4137824	KM50TSSTC08059M	8,5	M8	13	15	59	10	33	35	0,37
4137825	KM50TSSTC08084M	8,5	M8	13	18	84	10	58	60	0,42
4137826	KM50TSSTC08109M	8,5	M8	13	23	109	10	83	85	0,51
4137827	KM50TSSTC08134M	8,5	M8	13	23	134	10	108	110	0,56
4137828	KM50TSSTC10059M	10,5	M10	18	20	59	10	33	35	0,41
4137829	KM50TSSTC10084M	10,5	M10	18	25	84	10	58	60	0,51
4137830	KM50TSSTC10109M	10,5	M10	18	25	109	10	83	85	0,57
4137831	KM50TSSTC10134M	10,5	M10	18	28	134	10	108	110	0,61
4137832	KM50TSSTC12059M	12,5	M12	21	24	59	10	33	35	0,44
4137833	KM50TSSTC12084M	12,5	M12	21	24	84	10	58	60	0,51
4137834	KM50TSSTC12109M	12,5	M12	21	28	109	10	83	85	0,64
4137835	KM50TSSTC12134M	12,5	M12	21	31	134	10	108	110	0,79

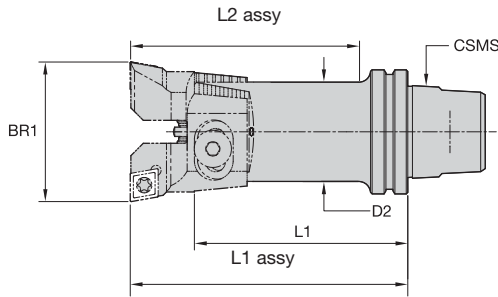
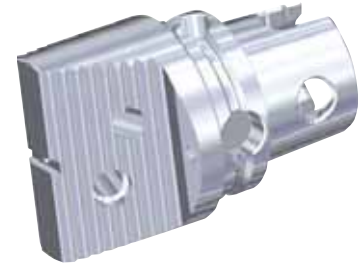
NOTE: For technical information, see page M96–97.



■ ST • Solid Tap Chuck

order number	catalog number	TQCS adapter size	D1		D2		L1		kg	lbs
			mm	in	mm	in	mm	in		
3964133	KM50TSST1050M	1	19	.749	35	1.375	50	1.971	0,48	1.06
3964134	KM50TSST2075M	2	31	1.222	51	2.000	75	2.955	0,89	1.95

NOTE: Quick-change tap adapters available and must be ordered separately; see page J76.

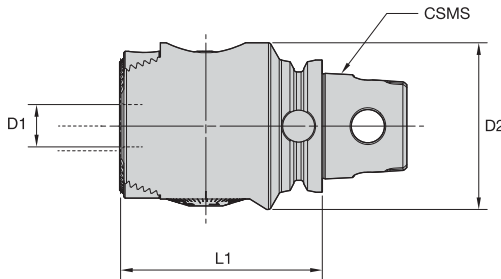


RBHT • KM™ Rough-Boring Twin Cutters

order number	catalog number	BR1 bore range		CSMS system size	D2		L1		L1 Assy		L2 Assy		blade screw	washer	pin
		mm	in		mm	in	mm	in	mm	in	mm	in			
3586522	KM50RBHT50	49,500-66,500	1.9488-2.6181	KM50	42,0	1.6562, 22.45	90,0	3.54	70,0	2.76	840.142.420	841.142.200	841.342.420		
3586543	KM50RBHT66	65,500-87,500	2.5787-3.4449	KM50	55,0	2.1763, 02.48	100,0	3.94	100,0	3.94	840.142.550	841.142.550	841.342.420		
3586544	KM50RBHT87	86,500-115,500	3.4055-4.5472	KM50	72,0	2.8370, 52.78	120,0	4.72	120,0	4.72	840.142.720	841.142.720	841.342.420		



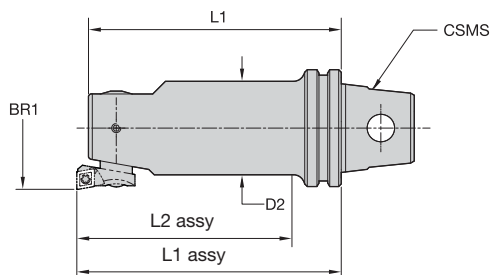
NOTE: Blade sets are ordered separately; see the Kennametal Innovations Master Catalog Cutting Tools 2013.



FBHM

order number	catalog number	BR1 bore range		CSMS system size	D1		D2		L1		ModBORE FBHS parts package	kg	lbs
		mm	in		mm	in	mm	in	mm	in			
4057060	KM50TSFBHM1677	9,750-164,000	.3838-6.4566	KM50TS	16,0	.63 63,0	2.48	76,6	3.02	PKG-8001	1,5	3.31	




KM50TS Adapters

■ FBHS • KM™ Fine-Boring Single Cutters

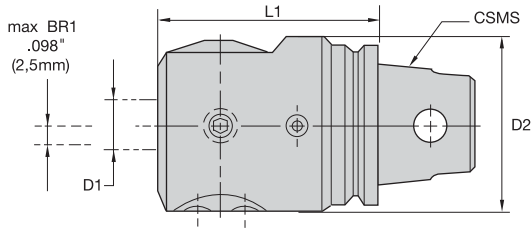
order number	catalog number	BR1 bore range		CSMS system size	D2		L1		L1 assy		L2 assy		cartridge mounting screw	lock screw
		mm	in		mm	in	mm	in	mm	in	mm	in		
3586575	KM50FBHS51	50,900-81,100	2.0039-3.1929	KM50	42,01.65	86,03.39	90,0	3.54	70,0	2.76			880.252.420	881.252.420
3586576	KM50FBHS67	66,900-105,100	2.6339-4.1378	KM50	55,02.17	96,03.78	100,0	3.94	100,0	3.94			880.252.550	881.252.550
3586577	KM50FBHS87	86,900-154,100	3.4213-6.0669	KM50	72,02.84	116,04.57	120,0	4.72	120,0	4.72			880.252.550	881.252.720

NOTE: Boring heads are ordered separately; see the Kennametal Innovations Master Catalog Cutting Tools 2013.

■ Reference Insert Cartridges

BR1		insert cartridges			
in	mm	90° lead		95° lead	
.9409 - 1.2244	23,900 - 31,100	R24FBHS06	—	R24FBHS06LF	—
1.1772 - 1.4606	29,900 - 37,100	R30FBHS06	—	—	—
1.2165 - 1.5787	30,900 - 40,100	R31FBHS06	—	R31FBHS06LF	—
1.4921 - 1.8543	37,900 - 47,100	F38FBHS06	—	—	—
1.5709 - 2.0118	39,900 - 51,100	R40FBHS06	—	R40FBHS06LF	—
1.8858 - 2.3268	47,900 - 59,100	R48FBHS06	—	—	—
2.0039 - 2.6417	50,900 - 67,100	R51FBHS06	—	R51FBHS06LF	—
2.5551 - 3.1929	64,900 - 81,100	R65FBHS06	—	—	—
2.6339 - 3.4291	66,900 - 87,100	R67FBHS06	R67FBHS09	—	R67FBHS09LF
3.3425 - 4.1378	84,900 - 105,100	R85FBHS06	R85FBHS09	—	—
3.4213 - 4.5709	86,900 - 116,100	R67FBHS06	R67FBHS09	—	R67FBHS09LF
4.1299 - 5.2795	104,900 - 134,100	R85FBHS06	R85FBHS09	—	—
4.5630 - 6.0669	115,900 - 154,100	R67FBHS06	R67FBHS09	—	R67FBHS09LF
5.2717 - 6.7362	133,900 - 171,100	R85FBHS06	R85FBHS09	—	—
6.0591 - 7.5236	153,900 - 191,100	—	R125FBHS09	—	—

- 0,01mm (.0004") diameter adjustment.
- Boring bar not included.

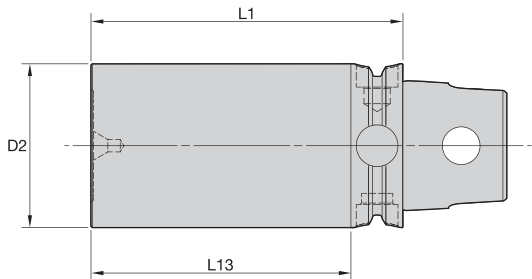


This tool is not KM50TS style according to ISO26622.

■ FBHO • KM™ Offset Boring Head



order number	catalog number	CSMS system size	D1		D2		L1		ModBORE FBHO parts package
			mm	in	mm	in	mm	in	
1132036	KM50FBHO1670	KM50	16	.63	55,0	2.17	70,0	2.76	PKG7001

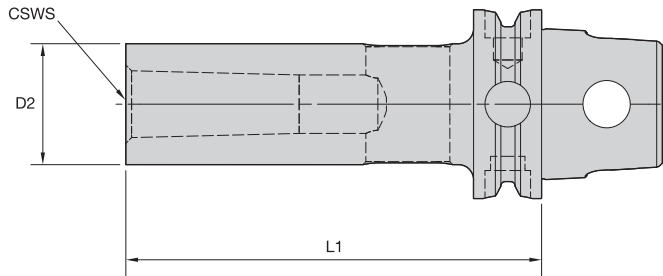


■ GB • Gage Bar

order number	catalog number	D2		L1		L13		kg	lbs
		mm	in	mm	in	mm	in		
3959978	KM50TSGB50100M	50	1.97	100	3.94	82	3.23	1,59	3.49

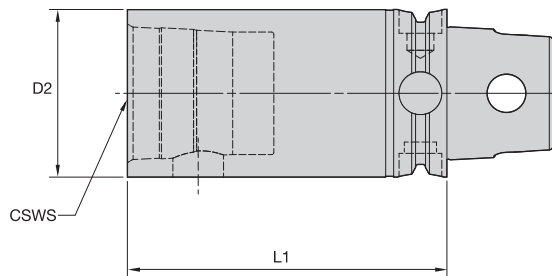


KM50TS Shank Tools



■ **MT • Morse Taper Adapter**

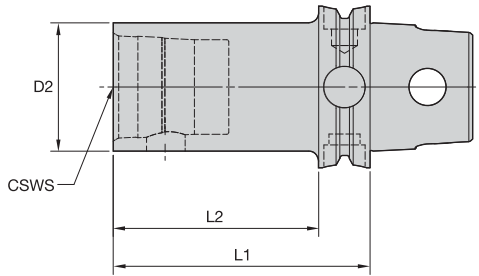
order number	catalog number	CSWS system size	D2		L1		kg	lbs
			mm	in	mm	in		
3862043	KM50TSMT1095M	1	25	.984	95	3.740	0,57	1.26
3862044	KM50TSMT2110M	2	32	1.260	110	4.331	0,77	1.70
3862045	KM50TSMT3130M	3	40	1.575	130	5.118	1,12	2.47
3862046	KM50TSMT4150M	4	48	1.890	150	5.906	1,54	3.40



■ **S • KM Extension**



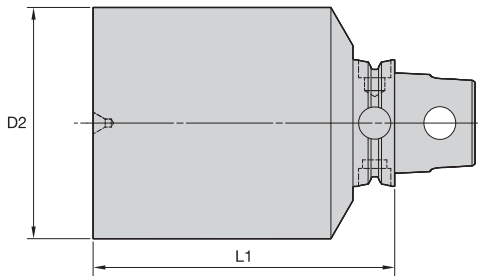
order number	catalog number	CSWS system size	D2		L1		wrench size actuation screw			spare parts package	kg	lbs
			mm	in	mm	in	Nm	ft. lbs.				
3862083	KM50TSS50070M	KM50	50	1.969	70	2.756	10mm	27-34	20-25	KM50PKG3S	0,92	2.03
3862084	KM50TSS50100M	KM50	50	1.969	100	3.937	10mm	27-34	20-25	KM50PKG3S	1,37	3.02



■ S • KM Reducer



order number	catalog number	CSWS system size	D2		L1		L2		wrench size actuation screw	Nm ft. lbs.		spare parts package	kg lbs
			mm	in	mm	in	mm	in					
3862071	KM50TSS32070M	KM32	32	1.260	70	2.756	52	2.047	5mm	8-11	6-8	KM32PKG3S	0,61 1.34
3862072	KM50TSS40080M	KM40	40	1.575	80	3.150	62	2.441	6mm	12-16	9-12	KM40PKG3S	0,84 1.86



■ BN • Blank

order number	catalog number	D2		L1		hardness range	kg	lbs
		mm	in	mm	in			
3851267	KM50TSBN73135M	73	2.874	135	5.315	32-38 HRC	4,15	9.16
3851268	KM50TSBN75062M	75	2.953	62	2.441	32-38 HRC	1,84	4.06
3851266	KM50TSBN105062M	105	4.134	62	2.441	32-38 HRC	3,15	6.95