



# The Kennametal Solution

**Kennametal Global Engineered Solutions. Coordinated global resources with world-class manufacturing, process development, and implementation capabilities.**

**No matter how small or large your project.**

- Whether it's a single tailored tool or the development of a comprehensive manufacturing process, Kennametal's team can manage the development, personnel training, and successful implementation of the complete solution.

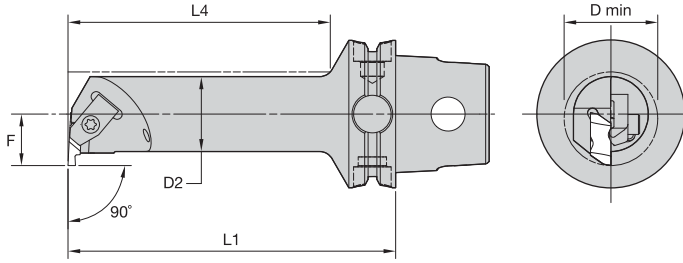
**Regardless of where you're located, Kennametal is everywhere you are.**

- With Kennametal's team, you receive globally coordinated manufacturing, process development, implementation, and optimisation support and key alliances with machine tool builders and other leading technology manufacturers that ensure a complete solution.

Experience the advantages at your Authorized Kennametal Distributor or at [www.kennametal.com](http://www.kennametal.com).

[www.kennametal.com](http://www.kennametal.com)





■ NE 90° • Steel

order number	catalog number	D2		D min		F		L4		L1		gage insert	kg	lbs
		mm	in	mm	in	mm	in	mm	in	mm	in			
right hand														
3790585	KM50TSS12ENER2	12	.47	19	.73	11	.433	42	1.654	70	2.756	NG2L	0,44	.97
3790583	KM50TSS16FNER2	16	.63	20	.79	11	.433	56	2.211	80	3.150	NG2L	0,44	.97
3790587	KM50TSS20HNER2	20	.79	25	.98	13	.512	70	2.769	100	3.937	NG2L	0,58	1.28
3790589	KM50TSS25JNER3	25	.98	34	1.34	17	.669	88	3.469	110	4.331	NG3L	0,67	1.48
3790591	KM50TSS32GNER3	32	1.26	40	1.57	22	.866	70	2.774	90	3.543	NG3L	0,71	1.57
3790593	KM50TSS32KNER3	32	1.26	40	1.57	22	.866	96	3.790	125	4.921	NG3L	0,97	2.14
3790595	KM50TSS40JNER4	40	1.57	50	1.97	27	1.063	91	3.593	110	4.331	NG4L	1,09	2.41
3790599	KM50TSS40LNER4	40	1.57	50	1.97	27	1.063	120	4.738	140	5.512	NG4L	1,39	3.06
3790598	KM50TSS40LNER3	40	1.57	50	1.97	27	1.063	120	4.738	140	5.512	NG3L	1,40	3.09
left hand														
3790584	KM50TSS12ENEL2	12	.47	19	.73	11	.433	42	1.654	70	2.756	NG2R	0,44	.97
3790291	KM50TSS16FNEL2	16	.63	20	.79	11	.433	56	2.211	80	3.150	NG2R	0,44	.97
3790586	KM50TSS20HNEL2	20	.79	25	.98	13	.512	70	2.769	100	3.937	NG2R	0,58	1.28
3790588	KM50TSS25JNEL3	25	.98	34	1.34	17	.669	88	3.469	110	4.331	NG3R	0,67	1.48
3790590	KM50TSS32GNEL3	32	1.26	40	1.57	22	.866	70	2.774	90	3.543	NG3R	0,71	1.57
3790592	KM50TSS32KNEL3	32	1.26	40	1.57	22	.866	96	3.790	125	4.921	NG3R	0,97	2.14
3790594	KM50TSS40JNEL4	40	1.57	50	1.97	27	1.063	91	3.593	110	4.331	NG4R	1,09	2.41
3790596	KM50TSS40LNEL3	40	1.57	50	1.97	27	1.063	120	4.738	140	5.512	NG3R	1,40	3.09
3790597	KM50TSS40LNEL4	40	1.57	50	1.97	27	1.063	120	4.738	140	5.512	NG4R	1,39	3.06

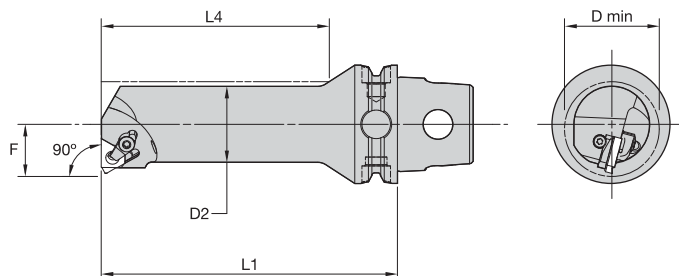
(continued)

(NE 90° • Steel continued)

■ Spare Parts



catalog number	clamp	clamp screw
right hand		
KM50TSS12ENER2	CM147	MS1488
KM50TSS16FNER2	CM147	MS1488
KM50TSS20HNER2	CM75	MS1488
KM50TSS25JNER3	CM73	MS1489
KM50TSS32GNER3	CM73	MS1489
KM50TSS32KNER3	CM73	MS1489
KM50TSS40JNER4	CM73	MS1489
KM50TSS40LNER3	CM73	MS1489
KM50TSS40LNER4	CM73	MS1489
left hand		
KM50TSS12ENEL2	CM146	MS1488
KM50TSS16FNEL2	CM146	MS1488
KM50TSS20HNEL2	CM74	MS1488
KM50TSS25JNEL3	CM72	MS1489
KM50TSS32GNEL3	CM72	MS1489
KM50TSS32KNEL3	CM72	MS1489
KM50TSS40JNEL4	CM72	MS1489
KM50TSS40LNEL3	CM72	MS1489
KM50TSS40LNEL4	CM72	MS1489



■ LSE 90°

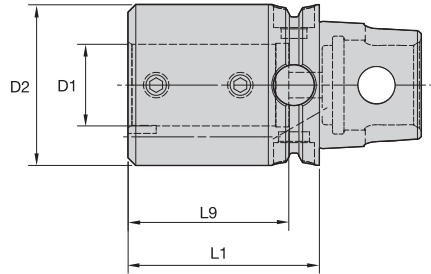
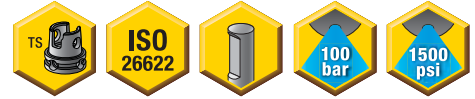
order number	catalog number	D2		D min		F		L4		L1		gage insert	kg	lbs
		mm	in	mm	in	mm	in	mm	in	mm	in			
right hand														
3838705	KM50TSS20HLSER16	20	.79	25	.98	13	.512	70	2.77	100	3.937	LT16NR	0,57	1.27
3838724	KM50TSS25JLSER16	25	.98	32	1.26	17	.669	88	3.48	110	4.331	LT16NR	0,68	1.49
3838709	KM50TSS32KLSER16	32	1.26	40	1.57	22	.866	96	3.79	125	4.921	LT16NR	1,01	2.24
3838710	KM50TSS40LLSER16	40	1.57	50	1.97	27	1.063	120	4.73	140	5.512	LT16NR	1,46	3.21
3838711	KM50TSS40LLSER22	40	1.57	50	1.97	27	1.063	120	4.73	140	5.512	LT22NR	1,45	3.21
left hand														
3964139	KM50TSS20HLSSEL16	20	.79	25	.98	13	.512	70	2.77	100	3.937	LT16NL	0,58	1.27
3838706	KM50TSS25JLSEL16	25	.98	32	1.26	17	.669	88	3.48	110	4.331	LT16NL	0,68	1.49
3838708	KM50TSS32KLSEL16	32	1.26	40	1.57	22	.866	96	3.79	125	4.921	LT16NL	1,01	2.24
3964141	KM50TSS40LLSEL22	40	1.57	50	1.97	27	1.063	120	4.73	140	5.512	LT22NL	1,45	3.21
3964140	KM50TSS40LLSEL16	40	1.57	50	1.97	27	1.063	120	4.73	140	5.512	LT16NL	1,46	3.21

■ Spare Parts



catalog number	insert screw	shim	shim screw	clamp assembly
right hand				
KM50TSS20HLSER16	SSA3T	SMY13	SSY3T	CKC3
KM50TSS25JLSER16	SSA3T	SMY13	SSY3T	CKC3
KM50TSS32KLSER16	SSA3T	SMY13	SSY3T	CKC3
KM50TSS40LLSER16	SSA3T	SMY13	SSY3T	CKC3
KM50TSS40LLSER22	SSA4T	SMY14	SSY4T	CKC4
left hand				
KM50TSS20HLSSEL16	SSA3T	SMYE3	SSY3T	CKC3
KM50TSS25JLSEL16	SSA3T	SMYE3	SSY3T	CKC3
KM50TSS32KLSEL16	SSA3T	SMYE3	SSY3T	CKC3
KM50TSS40LLSEL16	SSA3T	SMYE3	SSY3T	CKC3
KM50TSS40LLSEL22	SSA4T	SMYE4	SSY4T	CKC4

NOTE: Cutting units are supplied with insert screw and clamp assembly. However, tools are designed to use either the insert screw or the clamp assembly, not both.

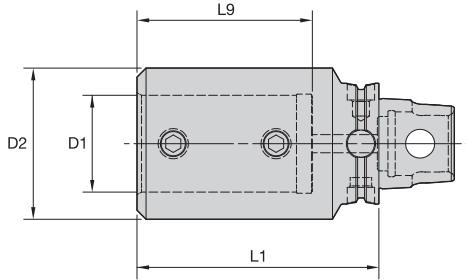
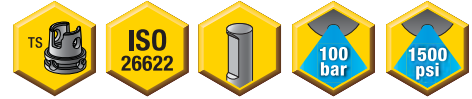

**■ BA • Boring Bar Adapter • Internal and External Coolant • Metric**


order number	catalog number	D1	D2	L1	L9	clamp screw	wrench size clamp screw	Nm	kg
3790547	KM50TSBA06045M	6	40	45	36	MS1210	2,5mm	4	0,59
3790548	KM50TSBA08045M	8	40	45	36	MS1210	2,5mm	4	0,58
3790549	KM50TSBA10055M	10	40	55	48	MS1211	4mm	15	0,67
3790550	KM50TSBA12060M	12	40	60	52	MS1211	4mm	15	0,70
3790551	KM50TSBA16065M	16	40	65	55	MS1211	4mm	15	0,70
3790552	KM50TSBA20070M	20	40	70	58	MS1212	5mm	25	0,70
3790573	KM50TSBA25070M	25	50	70	56	MS1212	5mm	25	0,90

**■ BA • Boring Bar Adapter • Internal and External Coolant • Inch**


order number	catalog number	D1	D2	L1	L9	clamp screw	wrench size clamp screw	ft. lbs.	lbs
3789937	KM50TSBA06217	3/8	1.57	2.165	1.89	S843	1/8	3	1.47
3789938	KM50TSBA08236	1/2	1.57	2.362	2.05	S852	5/32	8	1.53
3789939	KM50TSBA10256	5/8	1.57	2.559	2.17	S862	3/16	11	1.55
3789940	KM50TSBA12276	3/4	1.57	2.756	2.28	S862	3/16	11	1.57
3789941	KM50TSBA16276	1	1.97	2.756	2.20	S862	3/16	11	1.97

NOTE: Do not overtighten clamp screw; use torque recommendations above.  
 Supplied with clamp screw.  
 Clamp screw wrench not included.



■ BAI • Boring Bar Adapter • Internal Coolant Only • Metric



order number	catalog number	D1	D2	L1	L9	clamp screw	wrench size clamp screw	Nm	kg
3790289	KM50TSBAI32080M	32	50	80	58	MS1213	5mm	25	0,91
3790290	KM50TSBAI40090M	40	58	90	68	MS1213	5mm	25	1,13

■ BAI • Boring Bar Adapter • Internal Coolant Only • Inch

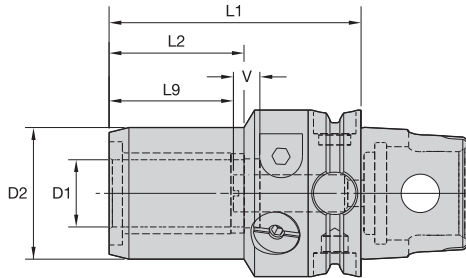


order number	catalog number	D1	D2	L1	L9	clamp screw	wrench size clamp screw	ft. lbs.	lbs
3790287	KM50TSBAI20315	1 1/4	1.97	3.150	2.28	S861	3/16	11	2.01
3790288	KM50TSBAI24354	1 1/2	2.28	3.543	2.68	S861	3/16	11	2.62

NOTE: Do not overtighten clamp screw; use torque recommendations above.  
Supplied with clamp screw.  
Clamp screw wrench not included.



KM50TS Shank Tools

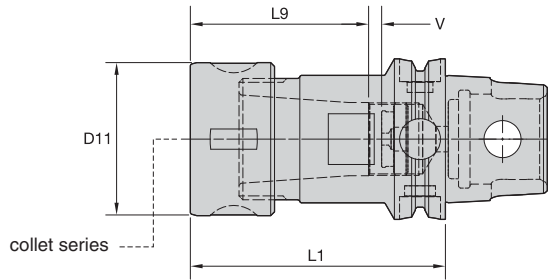
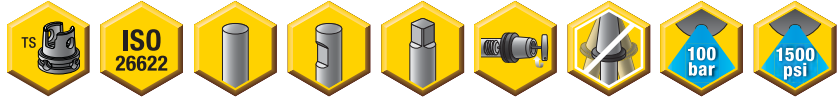


■ HC • Metric

order number	catalog number	D1	D2	L1	L2	L9	V	actuation wrench	wrench size actuation screw	length-adjustment wrench	wrench size stop screw	kg
4007723	KM50TSHC06065M	6	26	65	30	27	10	170.135	5 mm	170.002	2.5 mm	0,63
4007724	KM50TSHC08065M	8	28	65	30	27	10	170.135	5 mm	170.002	2.5 mm	0,65
4007725	KM50TSHC10070M	10	30	70	36	31	10	170.135	5 mm	170.002	2.5 mm	0,69
4007726	KM50TSHC12075M	12	32	75	40	36	10	170.135	5 mm	170.002	2.5 mm	0,73
4007727	KM50TSHC14075M	14	34	75	43	36	10	170.135	5 mm	170.003	3 mm	0,72
4007728	KM50TSHC16080M	16	38	80	47	39	10	170.135	5 mm	170.003	3 mm	0,83
4007729	KM50TSHC18080M	18	40	80	47	39	10	170.135	5 mm	170.003	3 mm	0,85
4007730	KM50TSHC20085M	20	42	85	48	71	10	170.135	5 mm	170.003	3 mm	0,94

NOTE: Do not overtorque clamp screw; tighten by hand until stop is felt.  
 Hydraulic chuck technical section, see page M84.  
 Reduction sleeves are available and must be ordered separately; see page J2.  
 Wrenches must be ordered separately.

- Tremendous Grip (3:1 advantage).



TG collet series	Collet Capacity			
	mm		inch	
	min	max	min	max
TG75	2,6	20,0	3/64	3/4
TG100	2,6	25,5	5/64	1

■ Collet Chuck • Round Nut

order number	catalog number	collet series	D11		L1		L9		V		kg	lbs
			mm	in	mm	in	mm	in	mm	in		
3790601	KM50TSTG075080M	TG75	50	1.97	80	3.150	53	2.09	10	.39	0,95	2.09
3790602	KM50TSTG100110M	TG100	60	2.36	110	4.331	69	2.72	10	.39	1,40	3.09

■ Spare Parts

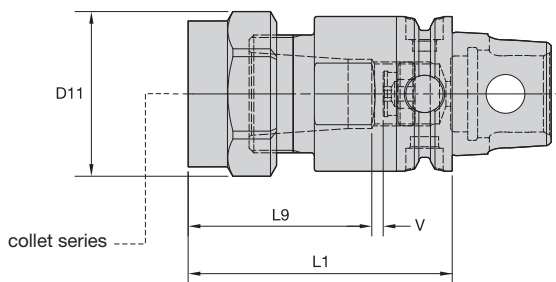
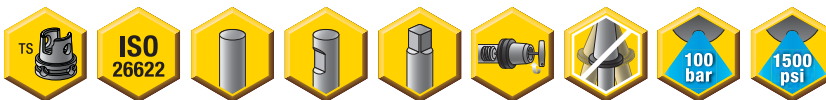


catalog number	locknut	wrench	Nm	ft. lbs.	stop screw	wrench size stop screw
KM50TSTG075080M	LNA075M	HSW45M	108-136	80-100	SS081041G	4mm & 5/32
KM50TSTG100110M	LNA100M	HSW58M	163-203	120-150	SS112041G	4mm & 5/32

(continued)



(Collet Chuck continued)



TG collet series	Collet Capacity			
	mm		inch	
	min	max	min	max
TG75	2,6	20,0	3/64	3/4
TG100	2,6	25,5	5/64	1

**■ Collet Chuck • Hex Nut**

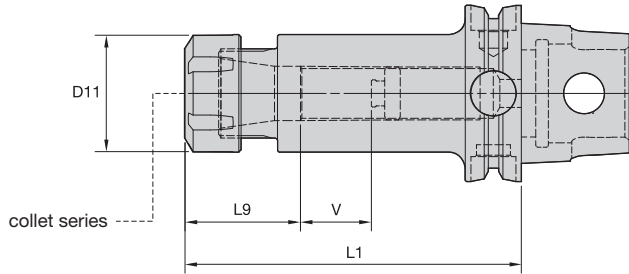
order number	catalog number	collet series	D11		L1		L9		V		kg	lbs
			mm	in	mm	in	mm	in	mm	in		
3790600	KM50TSTG075336	TG75	53	2.09	85	3.358	58	2.28	10	.39	0,93	2.06
3790613	KM50TSTG100457	TG100	62	2.44	116	4.568	75	2.95	10	.39	1,44	3.18

**■ Spare Parts**


catalog number	locknut	wrench	Nm	ft. lbs.	stop screw	wrench size stop screw
KM50TSTG075336	NPA075	OEW188	108-136	80-100	SS081041G	4mm & 5/32
KM50TSTG100457	NPA100	OEW225	163-203	120-150	SS112041G	4mm & 5/32

NOTE: Collet must be loaded into locknut first. Before loading into the chuck body, insert the cutting tool, then tighten to the recommended tightening torque.  
 Collet chuck technical section, see page M98.  
 Supplied with locknut and stop screw.  
 Locknut wrench must be ordered separately.  
 Interchangeable locknuts, coolant-style locknuts, and coolant disks are available and must be ordered separately; see pages L16–L17.  
 Stop screw coolant caps are available and must be ordered separately; see pages L34–L35.  
 Balanceable/interchangeable locknuts are available and must be ordered separately; see page L16.  
 TG standard straight-bore collets, see page J10.  
 TG tap collets, see page J10.

- Grip (2:1 advantage).



KM50TS Shank Tools



ER collet series	Collet Capacity			
	mm		inch	
	min	max	min	max
ER25	1,0	16,0	.04	.63
ER32	1,0	20,0	.08	.81
ER40	3,0	26,0	.08	1.00

■ Collet Chuck • Round Nut



order number	catalog number	collet series	D11		L1		L9		V		locknut	wrench	Nm	ft. lbs.	kg	lbs
			mm	in	mm	in	mm	in	mm	in						
3795029	KM50TSER25050M	ER25	42	1.65	50	1.969	41,2	1.62	—	—	LNSER25M	ER25WM	104	77	0,47	1.03
3795030	KM50TSER32060M	ER32	50	1.97	60	2.362	47,3	1.86	—	—	LNSER32M	ER32WM	136	100	0,62	1.36
3795031	KM50TSER40070M	ER40	63	2.48	70	2.756	53,3	2.10	—	—	LNSER40M	ER40WM	176	130	0,88	1.94

NOTE: Collet must be loaded into locknut first. Before loading into the chuck body, insert the cutting tool, then tighten to the recommended tightening torque.  
 Collet chuck technical section, see page M98.  
 Supplied with locknut and stop screw.  
 Locknut wrench must be ordered separately.  
 Interchangeable coolant-style locknuts and coolant disks are available and must be ordered separately; see page L19.  
 Stop screw coolant caps are available and must be ordered separately; see pages L34–L35.  
 ER standard straight-bore collets, see page J50.  
 ER tap collets, see pages J58–J59.  
 ER TCT tension-only tap collets, see page J60.