



KM MicroTM and KMTM Mini

The most economical modular quick-change tooling system available.

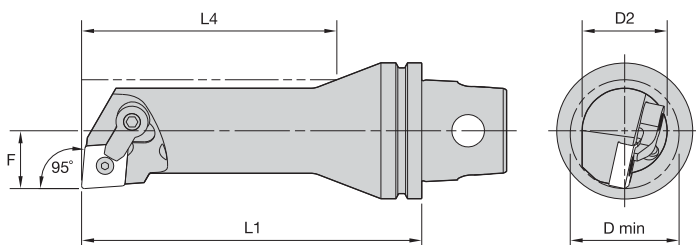
The KM Micro and KM Mini couplings offer a very rigid joint with a high degree of repeatability while maintaining a very compact envelope. This permits a high degree of versatility without sacrificing cutting performance.

- Reduce downtime, increase productivity.
- Replaces conventional square-shank tooling.
- No machine modifications required.
- KM Mini is ideal for machines up to 30 hp (22kW).

Experience the advantages at your Authorized Kennametal Distributor or at www.kennametal.com.

www.kennametal.com








■ MCLN 95°

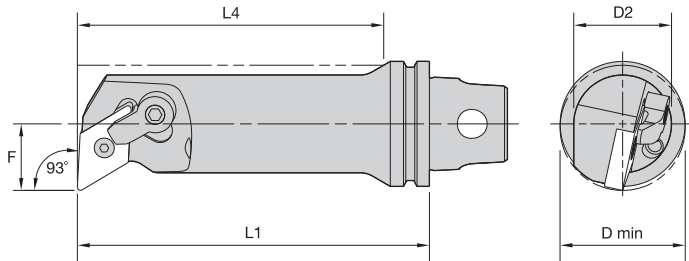
order number	catalog number	D2		D min		F		L4		L1		gage insert
		mm	in	mm	in	mm	in	mm	in	mm	in	
		right hand										
1023729	KM32TSS25EMCLNR12	25	.98	32	1.26	17	.669	58	2.28	70	2.756	CN..120408/CN..432
1023866	KM32TSS25GMCLNR12	25	.98	32	1.26	17	.669	75	2.95	90	3.543	CN..120408/CN..432
		left hand										
1023841	KM32TSS25EMCLNL12	25	.98	32	1.26	17	.669	58	2.28	70	2.756	CN..120408/CN..432
1023868	KM32TSS25GMCLNL12	25	.98	32	1.26	17	.669	75	2.95	90	3.543	CN..120408/CN..432

■ Spare Parts

catalog number	 lock pin	 clamp	 clamp screw
	right hand		
KM32TSS25EMCLNR12	KLM43	CKM20LP	STCM11
KM32TSS25GMCLNR12	KLM43	CKM20LP	STCM11
	left hand		
KM32TSS25EMCLNL12	KLM43	CKM20LP	STCM11
KM32TSS25GMCLNL12	KLM43	CKM20LP	STCM11



KM32TS Internal Cutting Units

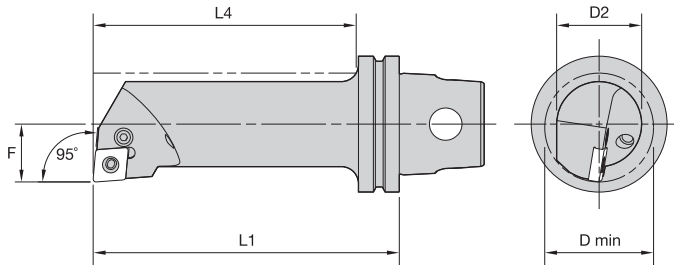


■ MDUN 93°

order number	catalog number	D2		D min		F		L4		L1		gage insert
		mm	in	mm	in	mm	in	mm	in	mm	in	
		right hand										
1023730	KM32TSS25EMDUNR15	25	.98	32	1.26	17	.669	58	2.28	70	2.756	DN..150408/DN..432
1023938	KM32TSS25GMDUNR15	25	.98	32	1.26	17	.669	75	2.95	90	3.543	DN..150408/DN..432

■ Spare Parts


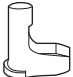
catalog number	lock pin	clamp	clamp screw	
				right hand
KM32TSS25EMDUNR15	KLM43	CKM20LP	STCM11	
KM32TSS25GMDUNR15	KLM43	CKM20LP	STCM11	



■ PCLN 95°

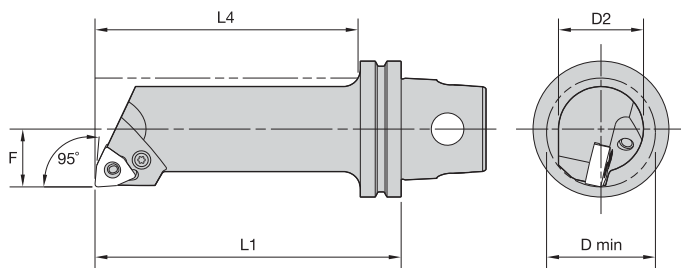
order number	catalog number	D2		D min		F		L4		L1		gage insert
		mm	in	mm	in	mm	in	mm	in	mm	in	
1671735	right hand	25	.984	32	1.260	17	.669	80	3.150	90	3.543	CN..090308/CN..322
	KM32TSS25GPCLNR09											
1671736	left hand	25	.984	32	1.260	17	.669	80	3.132	90	3.543	CN..090308/CN..322
	KM32TSS25GPCLNL09											

■ Spare Parts

catalog number	 lever screw	 toggle lever
right hand KM32TSS25GPCLNR09	514.011	511.013
left hand KM32TSS25GPCLNL09	514.011	511.013





KM32TS Internal Cutting Units

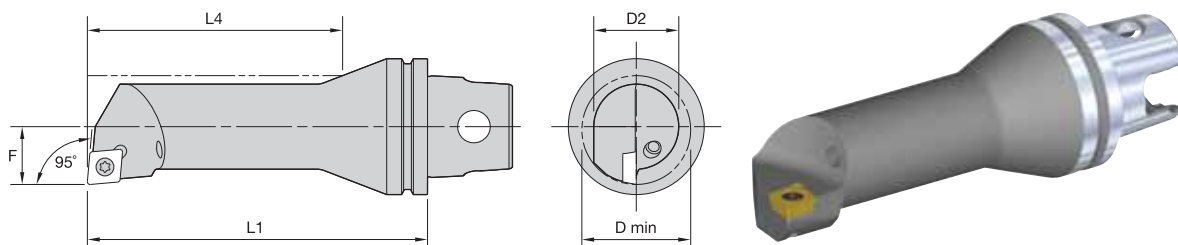


■ PWLN 95°

order number	catalog number	D2		D min		F		L4		L1		gage insert
		mm	in	mm	in	mm	in	mm	in	mm	in	
1695783	right hand	25	.984	32	1.260	17	.669	80	3.150	90	3.543	WN..060408/WN..332
	KM32TSS25GPWLNRO6											
1695784	left hand	25	.984	32	1.260	17	.669	80	3.150	90	3.543	WN..060408/WN..332
	KM32TSS25GPWLNLO6											

■ Spare Parts

catalog number	 lever screw	 toggle lever
right hand KM32TSS25GPWLNRO6	514.112	511.030
left hand KM32TSS25GPWLNLO6	514.112	511.030



■ SCLP 95°

order number	catalog number	D2		D min		F		L4		L1		gage insert
		mm	in	mm	in	mm	in	mm	in	mm	in	
right hand												
1144614	KM32TSS10CSCLPR06	10	.39	13	.51	7	.276	35	1.38	50	1.969	CP..060204/CP..2151
1144616	KM32TSS12DSCLPR06	12	.47	16	.63	9	.354	43	1.70	60	2.362	CP..060204/CP..2151
1144618	KM32TSS16ESCLPR09	16	.63	20	.79	11	.433	56	2.20	70	2.756	CP..09T308/CP..3252
1144645	KM32TSS20FSCLPR09	20	.79	25	.98	13	.512	60	2.36	80	3.150	CP..09T308/CP..3252
1144647	KM32TSS25GSCLPR09	25	.98	32	1.26	17	.669	75	2.95	90	3.543	CP..09T308/CP..3252
left hand												
1144615	KM32TSS10CSCLPL06	10	.39	13	.51	7	.276	35	1.38	50	1.969	CP..060204/CP..2151
1144617	KM32TSS12DSCLPL06	12	.47	16	.63	9	.354	43	1.70	60	2.362	CP..060204/CP..2151
1144619	KM32TSS16ESCLPL09	16	.63	20	.79	11	.433	56	2.20	70	2.756	CP..09T308/CP..3252
1144646	KM32TSS20FSCLPL09	20	.79	25	.98	13	.512	60	2.36	80	3.150	CP..09T308/CP..3252
1144745	KM32TSS25ESCLPL09	25	.98	32	1.26	17	.669	58	2.28	70	2.756	CP..09T308/CP..3252

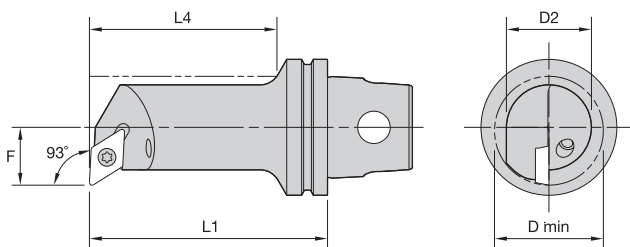
■ Spare Parts



catalog number	insert screw
right hand	
KM32TSS10CSCLPR06	MS1153
KM32TSS12DSCLPR06	MS1153
KM32TSS16ESCLPR09	MS1155
KM32TSS20FSCLPR09	MS1155
KM32TSS25GSCLPR09	MS1155
left hand	
KM32TSS10CSCLPL06	MS1153
KM32TSS12DSCLPL06	MS1153
KM32TSS16ESCLPL09	MS1155
KM32TSS20FSCLPL09	MS1155
KM32TSS25ESCLPL09	MS1155



KM32TS Internal Cutting Units



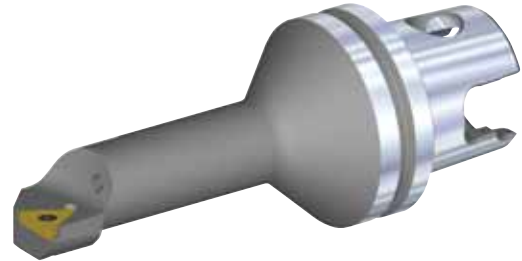
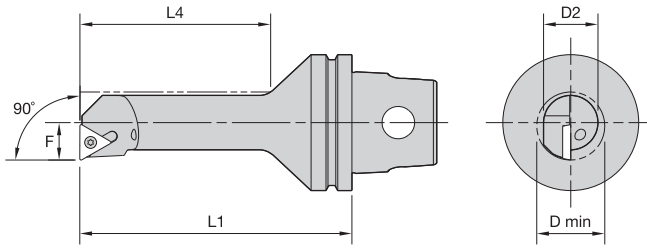
■ SDUP 93°

order number	catalog number	D2		D min		F		L4		L1		gage insert
		mm	in	mm	in	mm	in	mm	in	mm	in	
	right hand											
1020682	KM32TSS12DSDUPR07	12	.47	16	.63	9	.354	42	1.65	60	2.362	DP..070204/DP..2151
1020724	KM32TSS16ESDUPR07	16	.63	20	.79	11	.433	56	2.20	70	2.756	DP..070204/DP..2151
1144657	KM32TSS20FSDUPR07	20	.79	25	.98	13	.512	60	2.36	80	3.150	DP..070204/DP..2151
1144743	KM32TSS25ESDUPR11	25	.98	32	1.26	17	.669	58	2.28	70	2.756	DP..11T308/DP..3252
	left hand											
1020683	KM32TSS12DSDUPL07	12	.47	16	.63	9	.354	42	1.65	60	2.362	DP..070204/DP..2151
1020725	KM32TSS16ESDUPL07	16	.63	20	.79	11	.433	56	2.20	70	2.756	DP..070204/DP..2151
1144658	KM32TSS20FSDUPL07	20	.79	25	.98	13	.512	60	2.36	80	3.150	DP..070204/DP..2151
1144746	KM32TSS25ESDUPL11	25	.98	32	1.26	17	.669	58	2.28	70	2.756	DP..11T308/DP..3252

■ Spare Parts



catalog number	insert screw
right hand	
KM32TSS12DSDUPR07	MS1153
KM32TSS16ESDUPR07	MS1153
KM32TSS20FSDUPR07	MS1153
KM32TSS25ESDUPR11	MS1155
left hand	
KM32TSS12DSDUPL07	MS1153
KM32TSS16ESDUPL07	MS1153
KM32TSS20FSDUPL07	MS1153
KM32TSS25ESDUPL11	MS1155



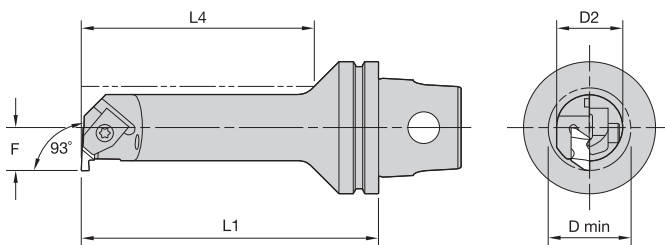
■ STFP 90°

order number	catalog number	D2		D min		F		L4		L1		gage insert
		mm	in	mm	in	mm	in	mm	in	mm	in	
1144626	KM32TSS10CSTFPR11	10	.39	13	.512	7	.276	35	1.38	50	1.969	TP..110204/TP..2151
1144629	KM32TSS16ESTFPR11	16	.63	20	.787	11	.433	56	2.20	70	2.756	TP..110204/TP..2151
1144627	KM32TSS10CSTFPL11	10	.39	13	.512	7	.276	35	1.38	50	1.969	TP..110204/TP..2151

■ Spare Parts



catalog number	insert screw
right hand KM32TSS10CSTFPR11	MS1153
KM32TSS16ESTFPR11	MS1153
left hand KM32TSS10CSTFPL11	MS1153

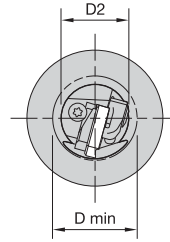
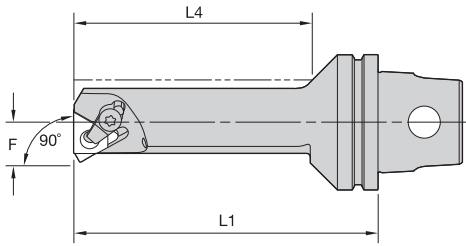


■ NE 93°

order number	catalog number	D2		D min		F		L4		L1		gage insert
		mm	in	mm	in	mm	in	mm	in	mm	in	
1020727	right hand	12	.47	19	.728	11	.433	42	1.654	60	2.362	NG2L
	KM32TSS12DNER2											
1020728	left hand	12	.47	19	.728	11	.433	42	1.654	60	2.362	NG2R
	KM32TSS12DNEL2											
1144713	KM32TSS20FNEL2	20	.79	25	.984	13	.512	60	2.362	80	3.150	NG2R

■ Spare Parts

catalog number	clamp	clamp screw
right hand		
KM32TSS12DNER2	CM147	MS1488
left hand		
KM32TSS12DNEL2	CM146	MS1488
KM32TSS20FNEL2	CM74	MS1488



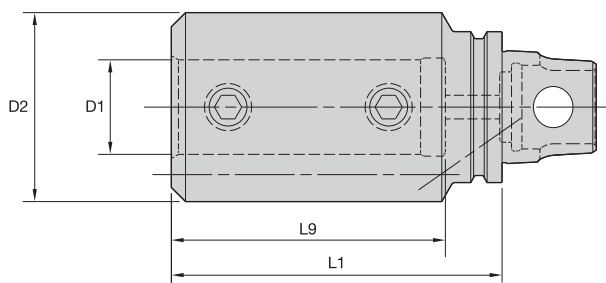
■ LSE 90°

order number	catalog number	D2		D min		F		L4		L1		gage insert
		mm	in	mm	in	mm	in	mm	in	mm	in	
		right hand										
1020454	KM32TSS10CLSER11	10	.39	13	.51	7	.276	35	1.38	50	1.969	LT11NR
1020456	KM32TSS12DLSER11	12	.47	16	.63	9	.354	42	1.65	60	2.362	LT11NR
1144724	KM32TSS16ELSER16	16	.63	20	.79	11	.433	56	2.21	70	2.756	LT16NR
1020458	KM32TSS20FLSER16	20	.79	25	.98	13	.512	60	2.36	80	3.150	LT16NR
		left hand										
1020461	KM32TSS25GLSEL16	25	.98	32	1.26	17	.669	75	2.95	90	3.543	LT16NL

■ Spare Parts

catalog number				
	shim	insert screw	shim screw	clamp assembly
	right hand			
KM32TSS10CLSER11	—	SSN2T	—	—
KM32TSS12DLSER11	—	SSN2T	—	—
KM32TSS16ELSER16	—	SSA3T	—	—
	left hand			
KM32TSS20FLSER16	SMYI3	SSA3T	SSY3T	CKC3
KM32TSS25GLSEL16	SMYE3	SSA3T	SSY3T	CKC3

NOTE: Items listed without a shim are designed for a 1.5° inclination angle.
Cutting units are supplied with insert screw and clamp assembly. However, tools are designed to use either the insert screw or the clamp assembly, not both.

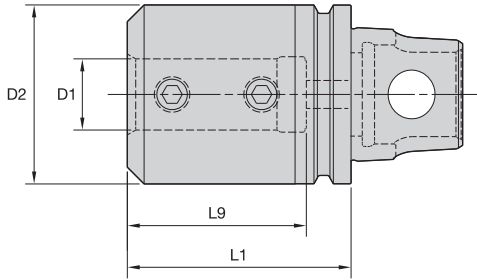

■ BA • Internal and External Coolant • Metric


order number	catalog number	D1	D2	L1	L9	clamp screw	wrench size clamp screw	Nm
1144729	KM32TSBA06045M	6	40	45	36	MS1210	2.5mm	4
1144730	KM32TSBA08045M	8	40	45	36	MS1210	2.5mm	4
1144544	KM32TSBA10055M	10	40	55	48	MS1211	4mm	18
1144545	KM32TSBA12060M	12	40	60	52	MS1211	4mm	15
1144546	KM32TSBA16065M	16	40	65	55	MS1212	5mm	34
1144547	KM32TSBA20070M	20	40	70	58	MS1212	5mm	35

■ BA • Internal and External Coolant • Inch


order number	catalog number	D1	D2	L1	L9	clamp screw	wrench size clamp screw	ft. lbs.
1020175	KM32TSBA06217	3/8	1.57	2.165	1.89	S843	1/8	8
1020176	KM32TSBA08236	1/2	1.58	2.362	2.05	S852	5/32	15
1020177	KM32TSBA10256	5/8	1.58	2.559	2.17	S862	3/16	25
1020178	KM32TSBA12276	3/4	1.57	2.756	2.28	S862	3/16	25

NOTE: Do not overtighten clamp screw; use torque recommendations above.
 Supplied with clamp screw.
 Clamp screw wrench not included.



■ BAI • Internal Coolant Only • Metric

order number	catalog number	D1	D2	L1	L9	wrench size clamp screw	Nm
1279245	KM32TSBAI25070M	25	50	70	58	5mm	25

■ Spare Parts • Metric

catalog number	clamp screw
KM32TSBAI25070M	MS1212



■ BAI • Internal Coolant Only • Inch

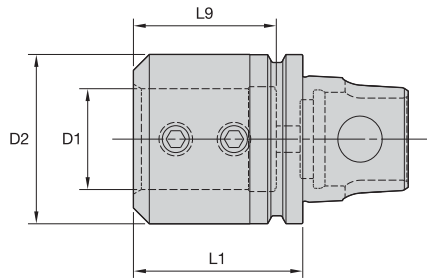
order number	catalog number	D1	D2	L1	L9	wrench size clamp screw	ft. lbs.
1722930	KM32TSBAI04126	1/4	1.26	1.260	1.06	3/32	2
1723301	KM32TSBAI06126	3/8	1.26	1.260	1.06	1/8	5
1723302	KM32TSBAI08157	1/2	1.26	1.575	1.26	1/8	8
1723303	KM32TSBAI10185	5/8	1.26	1.850	1.58	1/8	8
1021122	KM32TSBAI16276	1	1.97	2.756	2.28	3/16	15

■ Spare Parts • Inch

catalog number	clamp screw
KM32TSBAI04126	S836PKG
KM32TSBAI06126	S841PKG
KM32TSBAI08157	S841PKG
KM32TSBAI10185	—
KM32TSBAI16276	S862



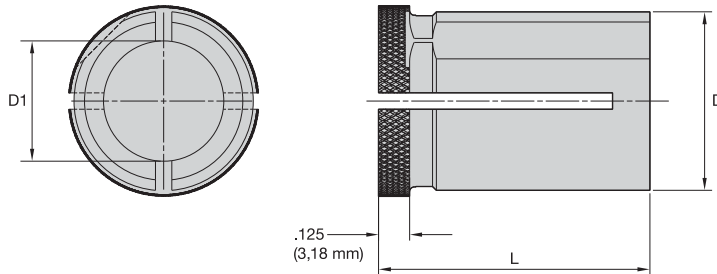
NOTE: Do not overtighten clamp screw; use torque recommendations above.
Supplied with clamp screw.
Clamp screw wrench not included.



■ HDB • Internal Coolant Only • Inch

order number	catalog number	D1	D2	L1	L9
1021167	KM32TSHDB6126	.750	1.26	1.260	1.06

NOTE: For bushings, see page A251.



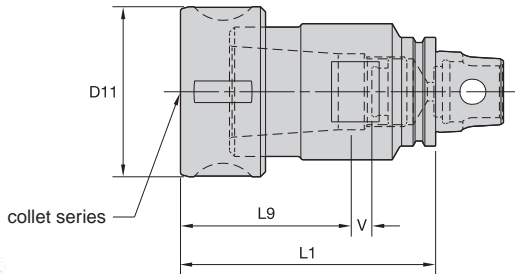
■ HDB • Inch

order number	catalog number	D1	D	L
1272797	HDB6250	.250	.750	1.120
1272798	HDB6375	.375	.750	1.120
1272799	HDB6500	.500	.750	1.120
1272800	HDB6625	.625	.750	1.120

- Tremendous Grip (3:1 advantage).
- Balanced by design.



KM32TS Shank Tools



■ TG • Round Nut

order number	catalog number	CST collet series	D11		L1		L9		V	
			mm	in	mm	in	mm	in	mm	in
1144185	KM32TSTGB075075M	TG75	50	1.97	75	2.953	53,0	2.09	2	.08

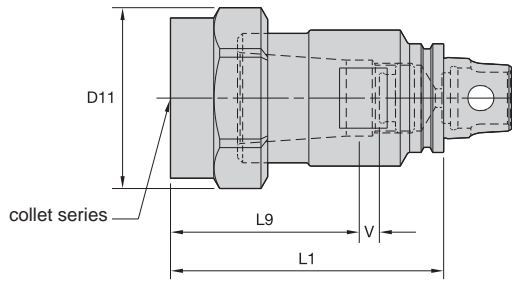
■ Spare Parts

catalog number	round assembly	HSW	Nm	ft. lbs.	stop screw	wrench size stop screw
KM32TSTGB075075M	LNA075M	HSW45M	136	100	SS081041G	4 mm & 5/32

NOTE: Collet must be loaded into locknut first. Before loading into the chuck body, insert the cutting tool, then tighten to the recommended tightening torque.
 Collet chuck technical section, see page M98.
 Supplied with locknut and stop screw.
 Locknut wrench must be ordered separately.
 Interchangeable locknuts, coolant-style locknuts, and coolant disks are available and must be ordered separately; see pages L16–L17.
 Stop screw coolant caps are available and must be ordered separately; see pages L34–L35.
 Balanceable/Interchangeable locknuts are available and must be ordered separately; see page L16.
 TG standard straight-bore collets, see page J10.
 TG tap collets, see page J10.

(continued)

(TG continued)



TG collet series	Collet Capacity			
	mm		inch	
	min	max	min	max
TG75	2,6	20,0	3/64	3/4

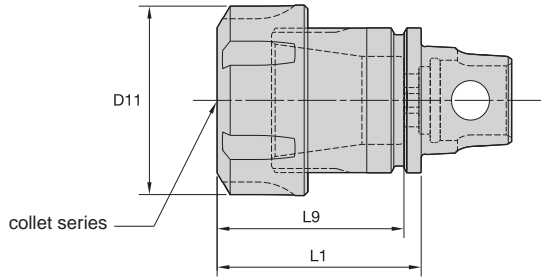
■ TG • Hex Nut

order number	catalog number	CST collet series	D11		L1		L9		V	
			mm	in	mm	in	mm	in	mm	in
1024232	KM32TSTGB075316	TG75	53	2.09	80	3.161	58,0	2.28	2	.08

■ Spare Parts


catalog number	locknut	wrench	Nm	ft. lbs.	stop screw	wrench size stop screw
KM32TSTGB075316	NPA075	OEW188	136	100	SS081041G	4 mm & 5/32

- Grip (2:1 advantage).
- Balanced by design.



ER collet series	mm		inch	
	min	max	min	max
ER25	1,0	16,0	.02	.63
ER32	1,0	20,0	.08	.81

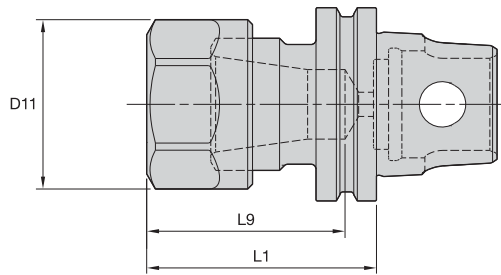
■ ER • Round Nut



order number	catalog number	CST collet series	D11		L1		L9		locknut	wrench	Nm	ft. lbs.
			mm	in	mm	in	mm	in				
1013521	KM32TSER25045M	ER25	42	1.654	45	1.772	41,2	1.622	LNSER25M	ER25WM	104	77
1013522	KM32ER3251	ER32	50	1.969	51	2.008	47,3	1.863	LNSER32M	ER32WM	136	100



(continued)

(ER continued)



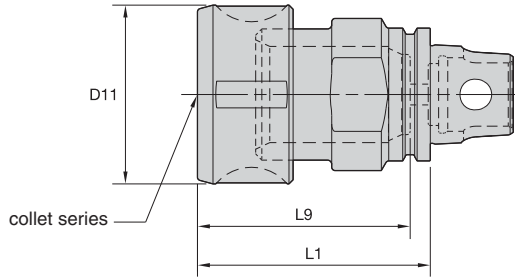
ER collet series	Collet Capacity			
	mm		inch	
	min	max	min	max
ER16	0,5	10,0	.02	.40

■ ER • Hex Nut

order number	catalog number	CST collet series	D11		L1		L9		locknut	wrench	straight collet torque (Nm)	straight collet torque (ft. lbs.)	counterbore collet torque (Nm)	counterbore collet torque (ft. lbs.)
			mm	in	mm	in	mm	in						
1013520	KM32TSER16036M	ER16	28	1.102	36	1.417	32,8	1.291			56	42	40	30

NOTE: Collet must be loaded into locknut first. Before loading into the chuck body, insert the cutting tool, then tighten to the recommended tightening torque.
 Collet chuck technical section, see page M98.
 Supplied with locknut and stop screw.
 Locknut wrench must be ordered separately.
 Interchangeable coolant-style locknuts and coolant disks are available and must be ordered separately; see pages L16–L17.
 Stop screw coolant caps are available and must be ordered separately; see pages L34–L35.
 ER standard straight-bore collets, see page J50.
 ER tap collets, see pages J58–J59.
 ER TCT tension-only tap collets, see page J60.

- Grip 1:1.
- Balanced by design.



KM32TS Shank Tools



DA collet series	Collet Capacity			
	mm		inch	
	min	max	min	max
200DA	1,0	10,0	.04	.39
180DA	3,0	20,0	.04	.75

■ DA • Round Nut

order number	catalog number	CST collet series	D11		L1		L9		V	
			mm	in	mm	in	mm	in	mm	in
1144184	KM32TSDA208060M	DA200	28	1.10	60	2.362	37	1.46	6,0	.24
1144190	KM32TSDA188056M	DA180	43	1.69	56	2.205	53	2.08	—	—

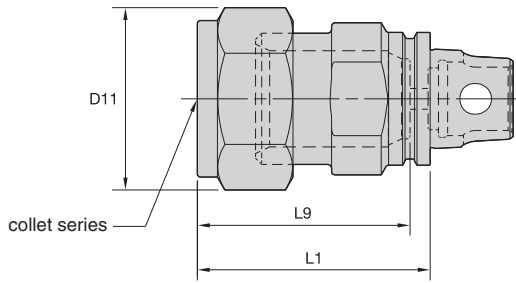
■ Spare Parts



catalog number	locknut	wrench	Nm	ft. lbs.	stop screw	wrench size stop screw
KM32TSDA208060M	LNA208RM	HSW25M	61	45	SS038031G	2 mm & 5/64
KM32TSDA188056M	LNA188M	HSW45M	136	100	—	—

(continued)

(DA continued)



DA collet series	Collet Capacity			
	mm		inch	
	min	max	min	max
200DA	1,0	10,0	.04	.39
180DA	3,0	20,0	.04	.75

■ DA • Hex Nut

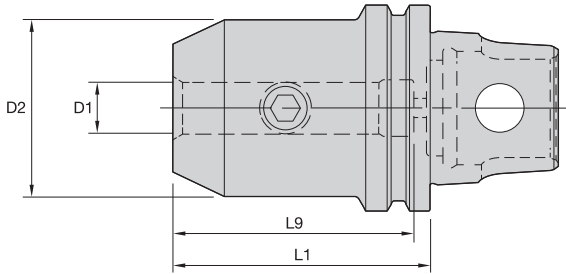
order number	catalog number	CST collet series	D11		L1		L9		V	
			mm	in	mm	in	mm	in	mm	in
1024325	KM32TSDA208236	DA200	29	1.15	60	2.362	35	1.38	8,0	.32
1145045	KM32TSDA188220	DA180	44	1.73	56	2.205	53	2.08	—	—
1024326	KM32TSDA188295	DA180	44	1.73	75	2.953	49	1.93	5,0	.20

■ Spare Parts



catalog number	locknut	wrench	Nm	ft. lbs.	stop screw	wrench size stop screw
KM32TSDA208236	NPA208	OEW100	54	40	SS038031G	2 mm & 5/64
KM32TSDA188220	NPA188	OEW225	102	75	—	—
KM32TSDA188295	NPA188	OEW150	102	75	SS081041G	4 mm & 5/32

NOTE: Tighten locknut to the recommended tightening torque.
 Collet chuck technical section, see page M98.
 Supplied with locknut and stop screw.
 Locknut wrench must be ordered separately.
 Stop screw coolant caps are available and must be ordered separately; see pages L34–L35.
 DA standard straight-bore collets, see page J62.
 DA non-pullout collets, see pages J65–J68.



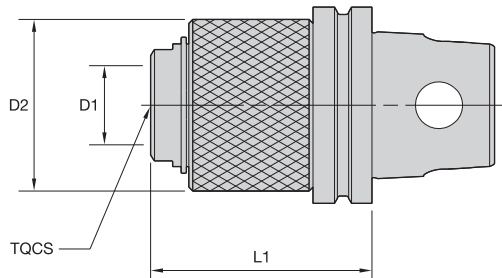
■ EM • Metric

order number	catalog number	D1	D2	L1	L9	clamp screw	wrench size clamp screw	Nm
1144187	KM32TSEM06040M	6	25	40	37,5	SS03M012	3mm	7
1144188	KM32TSEM08040M	8	28	40	37,5	SS03M014	4mm	15
1144191	KM32TSEM10045M	10	35	45	42,0	SS03M018	5mm	25
1144189	KM32TSEM12050M	12	42	50	47,0	SS03M023	6mm	35

■ EM • Inch

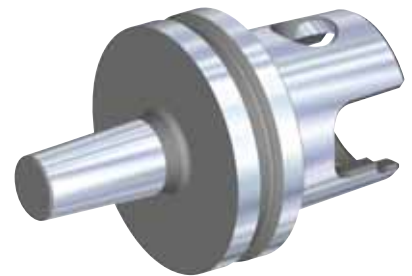
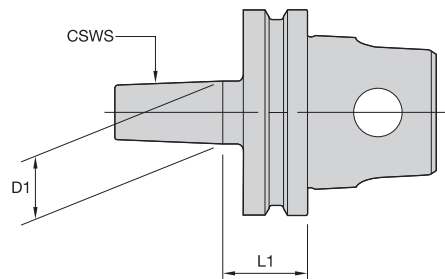
order number	catalog number	D1	D2	L1	L9	clamp screw	wrench size clamp screw	ft. lbs.
1145046	KM32TSEM038177	.375	1.00	1.772	1.63	ELS038031PKG	3/16	15
1024263	KM32TSEM050197	.500	1.38	1.969	1.84	ELS044038PKG	7/32	20

NOTE: Do not overtighten clamp screw; use torque recommendations above.
Supplied with clamp screw.
Clamp screw wrench not included.


■ ST • Solid Tap Chuck

order number	catalog number	TQCS adapter size	D1		D2		L1	
			mm	in	mm	in	mm	in
1013514	KM32TSST140	1	19	.748	35	1.38	40,05	1.577

NOTE: Quick-change tap adapters are available and must be ordered separately; see page J76.


■ JT

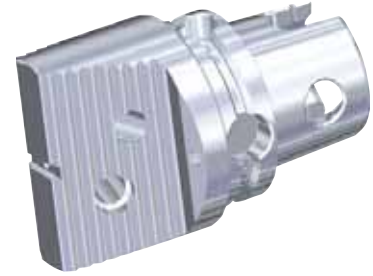
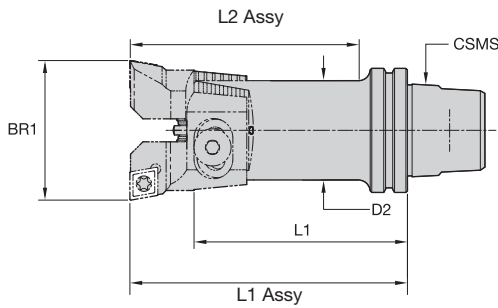
order number	catalog number	CSWS system size	D1		L1	
			mm	in	mm	in
1021467	KM32TSJT1	1	10	.384	13,34	.525



- Preset on tool setter.
- Blade set included.



KM32 ModBORE



■ **RBHT-F • 0° Lead**



order number	catalog number	BR1 bore range		CSMS system size	D2		L1		L1 Assy		L2 Assy		blade screw	washer	pin
		mm	in		mm	in	mm	in	mm	in	mm	in			
3586519	KM32RBHT24	23,500-30,500	.9252-1.2008	KM32	20,0	.79	75,4	2.97	90,0	3.54	76,0	2.99	840.142.200	841.142.200	841.342.200
3586520	KM32RBHT30	29,500-40,000	1.1614-1.5748	KM32	25,0	.98	83,8	3.30	100,0	3.94	86,0	3.39	840.142.250	841.142.250	841.342.200

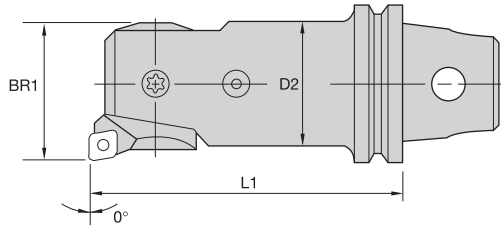
NOTE: Blade sets are ordered separately; see the Kennametal Innovations Master Catalog Cutting Tools 2013.

■ **Reference Insert Blade Sets**

BR1		90° lead blade sets	70° lead blade sets	90° lead simultaneous adjusting blade sets	90° lead split depth of cut blade
mm	inch				
23.500 - 30.500	.9252 - 1.2008	MB24RBHT06F	MB24RBHT06K	SYB24RBHT06F	SDB24RBHT06F
29.500 - 40.000	1.1614 - 1.5748	MB30RBHT06F	MB30RBHT06K	SYB30RBHT06F	SDB30RBHT06F

NOTE: Blade gage insert is CC..T21.51.

- 0,01mm (.0004") diameter adjustment.
- Insert holder included.

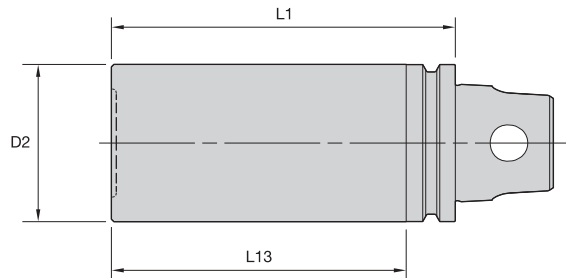


KM32 ModBORE • KM32TS Shank Tools

■ **FBHS • 0° Lead**

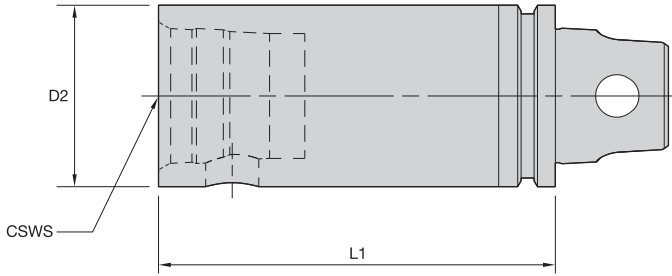
order number	catalog number	BR1 bore range		L1		D2		cartridge
		mm	in	mm	in	mm	in	
3586572	KM32FBHS24	23,9	.941	85,94	3.384	20	.79	R24FBHS06
3586573	KM32FBHS31	30,9	1.217	82,12	3.233	25	.98	R31FBHS06

NOTE: Blade gage insert is CC..T21.51.



■ **GB • Gage Bar**

order number	catalog number	L1		D2		L13	
		mm	in	mm	in	mm	in
1144559	KM32TSGB32070M	70,00	2.756	32,00	1.260	60,00	2.362



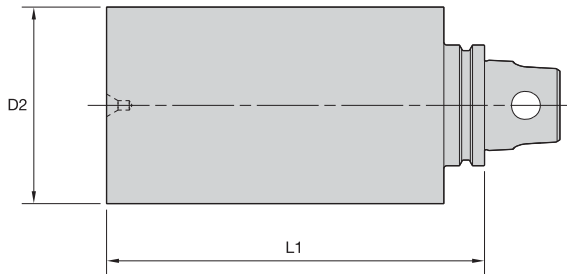
■ S • KM Extension



order number	catalog number	CSWS system size	D2		L1		wrench size			spare parts package
			mm	in	mm	in	actuation screw	Nm	ft. lbs.	
1144258	KM32TSS32050M	KM32	32	1.260	50	1.969	5mm	8-11	6-8	KM32PKG3S
1144259	KM32TSS32070M	KM32	32	1.260	70	2.756	5mm	8-11	6-8	KM32PKG3S



KM32TS Shank Tools



■ BN • Blank

order number	catalog number	D2		L1		hardness range
		mm	in	mm	in	
1017544	KM32TSBN52100M	52	2.047	100	3.937	32-38 RW C
1021072	KM32TSBN52048M	52	2.047	48	1.890	32-38 RW C
1021073	KM32TSBN75048M	75	2.953	48	1.890	32-38 RW C

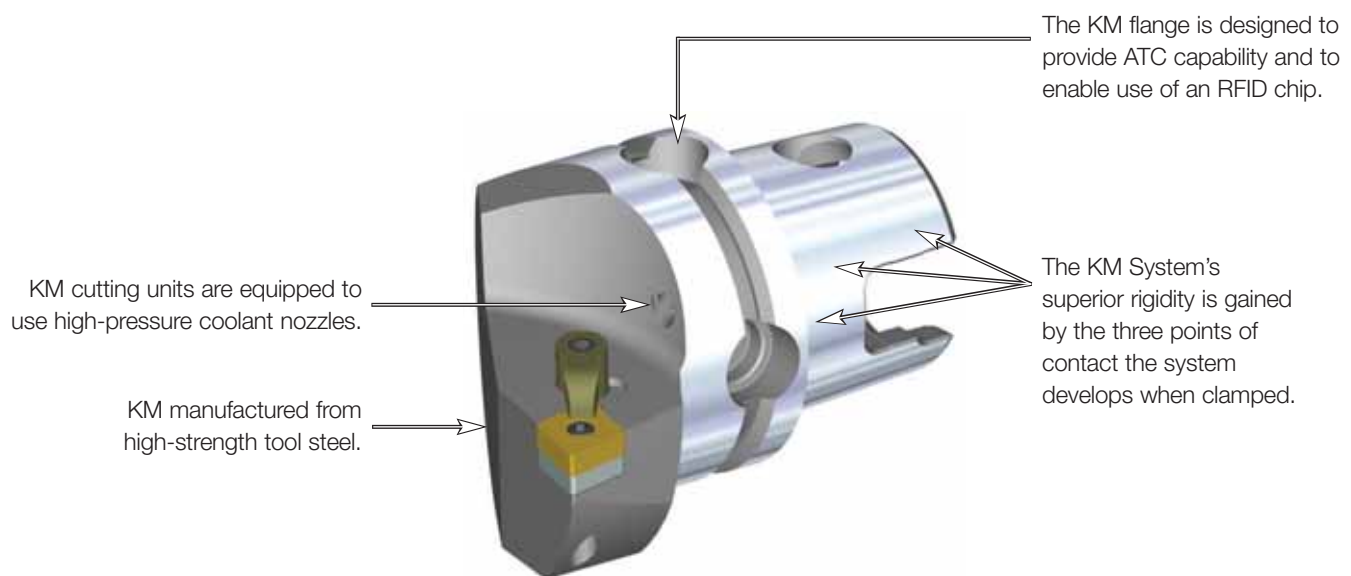
KM™ Quick Change Clamping System • KM40TS™ Series

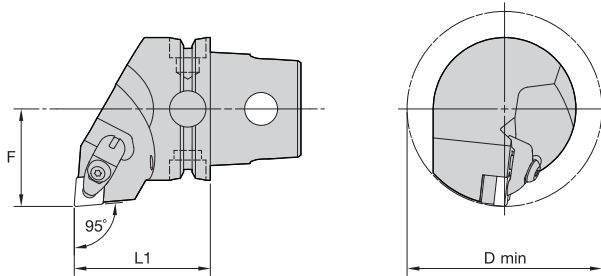
Primary Application

The KM Quick Change Clamping System is the best system on the market suitable for static, rotating, and multitasking operations. With its industry-leading design, the KM Quick Change System provides greater clamping forces than other quick-change systems. The KM Quick Change System gives you the flexibility to use KM on any application within your shop.

Features and Benefits





- KM is an ISO standard (ISO 26622).
- KM clamping units provide a 4:1 mechanical advantage.
- KM cutting units are capable of 100 bar (1,500 psi) coolant pressure.

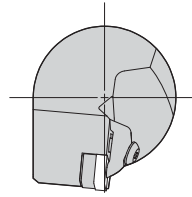
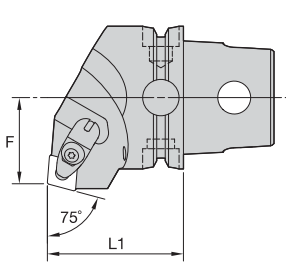



KM40TS Cutting Units

■ DCLN 95°

order number	catalog number	L1		F		D min		gage insert	kg
		mm	in	mm	in	mm	in		
		right hand							
3950183	KM40TSDCLNR12KC04	45	1.772	27	1.063	54	2.13	CN..120408/CN..432	0,36
3950184	KM40TSDCLNR16KC06	45	1.772	27	1.063	—	—	CN..160612/CN..543	0,36
		left hand							
3950161	KM40TSDCLNL12KC04	45	1.772	27	1.063	54	2.13	CN..120408/CN..432	0,36
3950162	KM40TSDCLNL16KC06	45	1.772	27	1.063	—	—	CN..160612/CN..543	0,36

■ Spare Parts

catalog number	 shim	 shim screw	 clamp assembly	 pin
	right hand			
KM40TSDCLNR12KC04	ICSN433	KMSP415IP	CM234R ASSY	SSP025016M
KM40TSDCLNR16KC06	ICSN543	KMSP515IP	CM209R ASSY	SSP025018M
	left hand			
KM40TSDCLNL12KC04	ICSN433	KMSP415IP	CM234R ASSY	SSP025016M
KM40TSDCLNL16KC06	ICSN543	KMSP515IP	CM209R ASSY	SSP025018M



■ **DCRN 75°**

order number	catalog number	L1		F		gage insert	kg
		mm	in	mm	in		
3950186	KM40TSDCRNR12KC04 right hand	45	1.772	24	.945	CN..120408/CN..432	0,39
3950185	KM40TSDCRNL12KC04 left hand	45	1.772	24	.945	CN..120408/CN..432	0,39

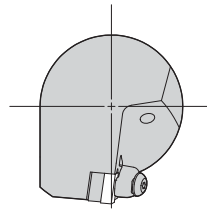
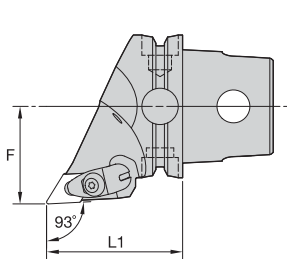
■ **Spare Parts**

catalog number	shim	shim screw	clamp assembly	pin
KM40TSDCRNR12KC04	ICSN443	KMSP415IP	CM234R ASSY	SSP025016M
KM40TSDCRNL12KC04	ICSN443	KMSP415IP	CM234R ASSY	SSP025016M



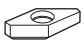





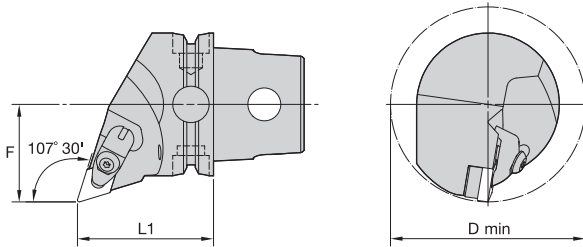
KM40TS Cutting Units


■ DDJN 93°

order number	catalog number	L1		F		gage insert	kg
		mm	in	mm	in		
		right hand					
3950163	KM40TSDDJNR15KC04	50	1.969	27	1.063	DN..150408/DN..432	0,33
3950164	KM40TSDDJNR15KC06	50	1.969	27	1.063	DN..150608/DN..442	0,32
		left hand					
3950151	KM40TSDDJNL15KC04	50	1.969	27	1.063	DN..150408/DN..432	0,33
3950152	KM40TSDDJNL15KC06	50	1.969	27	1.063	DN..150608/DN..442	0,32

■ Spare Parts

catalog number				
	shim	shim screw	clamp assembly	pin
	right hand			
KM40TSDDJNR15KC04	IDSN443	KMSP415IP	CM234R ASSY	SSP025016M
KM40TSDDJNR15KC06	IDSN433	KMSP415IP	CM234R ASSY	SSP025016M
	left hand			
KM40TSDDJNL15KC04	IDSN443	KMSP415IP	CM234R ASSY	SSP025016M
KM40TSDDJNL15KC06	IDSN433	KMSP415IP	CM234R ASSY	SSP025016M

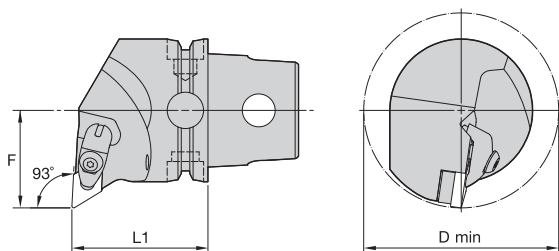


■ DDQN 107° 30'

order number	catalog number	L1		F		D min		gage insert	kg
		mm	in	mm	in	mm	in		
	right hand								
3950167	KM40TSDDQNR15KC04	45	1.772	27	1.063	86	3.39	DN..150408/DN..432	0,31
3950168	KM40TSDDQNR15KC06	45	1.772	27	1.063	86	3.39	DN..150608/DN..442	0,31
	left hand								
3950165	KM40TSDDQNL15KC04	45	1.772	27	1.063	86	3.39	DN..150408/DN..432	0,31
3950166	KM40TSDDQNL15KC06	45	1.772	27	1.063	86	3.39	DN..150608/DN..442	0,31

■ Spare Parts

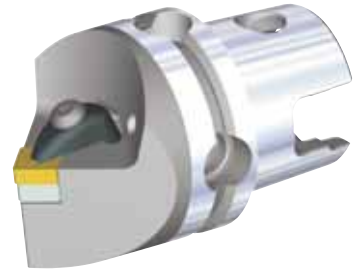
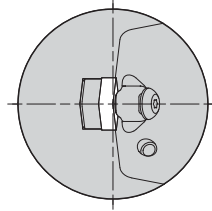
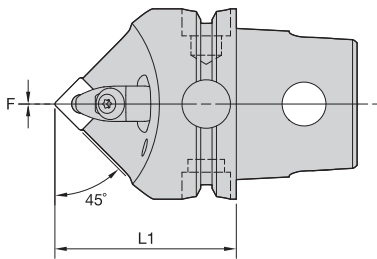
catalog number				
	shim	shim screw	clamp assembly	pin
right hand				
KM40TSDDQNR15KC04	IDSN443	KMSP415IP	CM234R ASSY	SSP025016M
KM40TSDDQNR15KC06	IDSN433	KMSP415IP	CM234R ASSY	SSP025016M
left hand				
KM40TSDDQNL15KC04	IDSN443	KMSP415IP	CM234R ASSY	SSP025016M
KM40TSDDQNL15KC06	IDSN433	KMSP415IP	CM234R ASSY	SSP025016M


■ DDUN 93°

order number	catalog number	L1		F		D min		gage insert	kg
		mm	in	mm	in	mm	in		
	right hand								
3950171	KM40TSDDUNR15KC04	45	1.772	27	1.063	86	3.39	DN..150408/DN..432	0,37
3950172	KM40TSDDUNR15KC06	45	1.772	27	1.063	86	3.39	DN..150608/DN..442	0,37
	left hand								
3950169	KM40TSDDUNL15KC04	45	1.772	27	1.063	86	3.39	DN..150408/DN..432	0,37
3950170	KM40TSDDUNL15KC06	45	1.772	27	1.063	86	3.39	DN..150608/DN..442	0,36

■ Spare Parts

catalog number	shim	shim screw	clamp assembly	pin
right hand				
KM40TSDDUNR15KC04	IDSN443	KMSP415IP	CM234R ASSY	SSP025016M
KM40TSDDUNR15KC06	IDSN433	KMSP415IP	CM234R ASSY	SSP025016M
left hand				
KM40TSDDUNL15KC04	IDSN443	KMSP415IP	CM234R ASSY	SSP025016M
KM40TSDDUNL15KC06	IDSN433	KMSP415IP	CM234R ASSY	SSP025016M

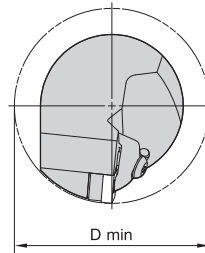
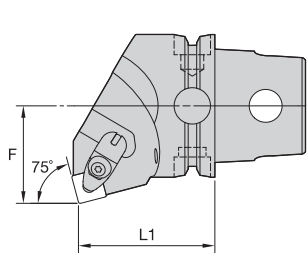


■ DSDN 45°

order number	catalog number	L1		F		gage insert	kg
		mm	in	mm	in		
3950743	KM40TSDSDNN12KC04	45	1.772	0	.000	SN..120408/SN..432	0,33

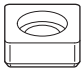
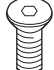


■ Spare Parts

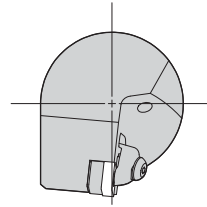
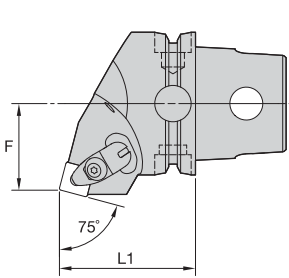
catalog number				
	shim	shim screw	clamp assembly	pin
KM40TSDSDNN12KC04	ISSN443	KMSP415IP	CM234R ASSY	SSP025016M


■ DSKN 75°

order number	catalog number	L1		F		D min		gage insert	kg
		mm	in	mm	in	mm	in		
	right hand								
3950745	KM40TSDSKNR12KC04	45	1.772	27	1.063	54	2.13	SN..120408/SN..432	0,40
	left hand								
3950744	KM40TSDSKNL12KC04	45	1.772	27	1.063	54	2.13	SN..120408/SN..432	0,40

■ Spare Parts

catalog number				
	shim	shim screw	clamp assembly	pin
right hand KM40TSDSKNR12KC04	ISSN443	KMSP415IP	CM234R ASSY	SSP025016M
left hand KM40TSDSKNL12KC04	ISSN443	KMSP415IP	CM234R ASSY	SSP025016M

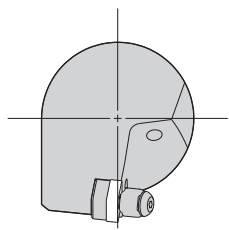
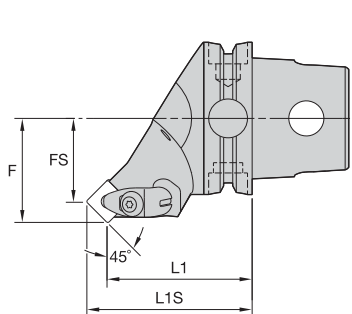


■ DSRN 75°

order number	catalog number	L1		F		gage insert	kg
		mm	in	mm	in		
	right hand						
3950747	KM40TSDSRNR12KC04	45	1.772	24	.945	SN..120408/SN..432	0,36
	left hand						
3950746	KM40TSDSRNL12KC04	45	1.772	24	.945	SN..120408/SN..432	0,36

■ Spare Parts

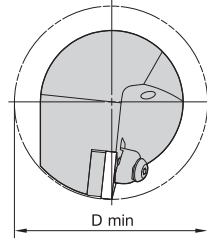
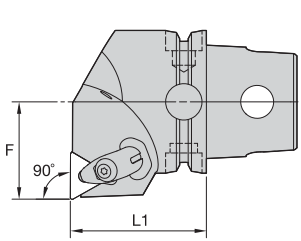
catalog number	shim	shim screw	clamp assembly	pin
KM40TSDSRNR12KC04	ISSN443	KMSP415IP	CM234R ASSY	SSP025016M
KM40TSDSRNL12KC04	ISSN443	KMSP415IP	CM234R ASSY	SSP025016M


KM40TS Cutting Units

■ DSSN 45°

order number	catalog number	L1		L1S		F		FS		gage insert	kg
		mm	in	mm	in	mm	in	mm	in		
		right hand									
3950749	KM40TSDSSNR12KC04	45	1.772	53,3	2.100	27	1.063	19	.735	SN..120408/SN..432	0,38
		left hand									
3950748	KM40TSDSSNL12KC04	45	1.772	53,3	2.100	27	1.063	19	.735	SN..120408/SN..432	0,38

■ Spare Parts

catalog number				
	shim	shim screw	clamp assembly	pin
	right hand			
KM40TSDSSNR12KC04	ISSN443	KMSP415IP	CM234R ASSY	SSP025016M
	left hand			
KM40TSDSSNL12KC04	ISSN443	KMSP415IP	CM234R ASSY	SSP025016M



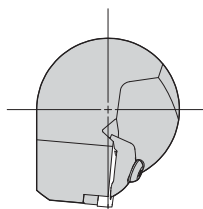
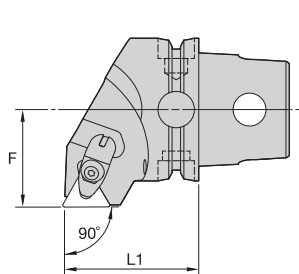
■ DTFN 90°

order number	catalog number	L1		F		D min		gage insert	kg
		mm	in	mm	in	mm	in		
	right hand								
3950751	KM40TSDTFNR22KC04050M	50	1.969	27	1.063	54	2.13	TN..220408/TN..432	0,45
	left hand								
3950750	KM40TSDTFNL22KC04050M	50	1.969	27	1.063	54	2.13	TN..220408/TN..432	0,45

■ Spare Parts



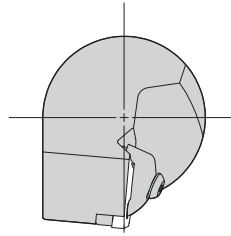
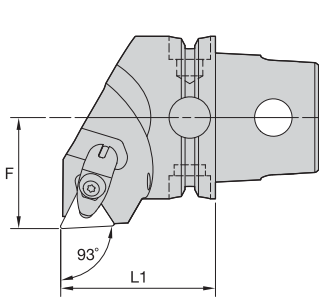
catalog number	shim	shim screw	clamp assembly	pin
right hand KM40TSDTFNR22KC04050M	ITSN433	KMSP415IP	CM234R ASSY	SSP025016M
left hand KM40TSDTFNL22KC04050M	ITSN433	KMSP415IP	CM234R ASSY	SSP025016M


■ DTGN 90°

order number	catalog number	L1		F		gage insert	kg
		mm	in	mm	in		
3950753	right hand	45	1.772	27	1.063	TN..220408/TN..432	0,39
	KM40TSDTGNR22KC04						
3950752	left hand	45	1.772	27	1.063	TN..220408/TN..432	0,39
	KM40TSDTGNL22KC04						

■ Spare Parts

catalog number				
	shim	shim screw	clamp assembly	pin
right hand KM40TSDTGNR22KC04	ITSN443	KMSP415IP	CM234R ASSY	SSP025016M
left hand KM40TSDTGNL22KC04	ITSN443	KMSP415IP	CM234R ASSY	SSP025016M

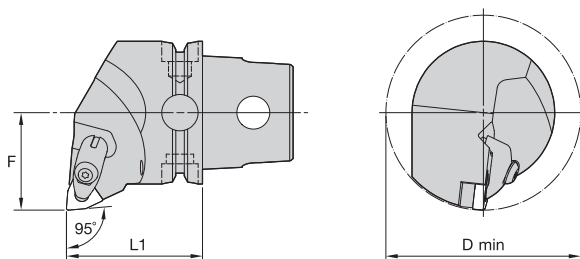


■ DTJN 93°

order number	catalog number	L1		F		gage insert	kg
		mm	in	mm	in		
3950755	right hand KM40TSDTJNR22KC04	45	1.772	27	1.063	TN..220408/TN..432	0,39
3950754	left hand KM40TSDTJNL22KC04	45	1.772	27	1.063	TN..220408/TN..432	0,39

■ Spare Parts

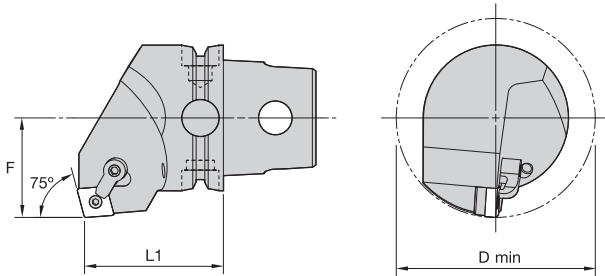
catalog number				
	shim	shim screw	clamp assembly	pin
right hand KM40TSDTJNR22KC04	ITSN443	KMSP415IP	CM234R ASSY	SSP025016M
left hand KM40TSDTJNL22KC04	ITSN443	KMSP415IP	CM234R ASSY	SSP025016M


■ DWLN 95°

order number	catalog number	L1		F		D min		gage insert	kg
		mm	in	mm	in	mm	in		
	right hand								
3950757	KM40TSDWLN R08KC04	45	1.772	27	1.063	54	2.13	WN..080408/WN..432	0,38
	left hand								
3950756	KM40TSDWLN L08KC04	45	1.772	27	1.063	54	2.13	WN..080408/WN..432	0,38

■ Spare Parts

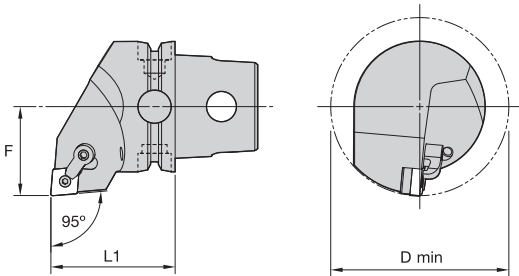
catalog number	shim	shim screw	clamp assembly	pin
KM40TSDWLN R08KC04	IWSN433	KMSP415IP	CM234R ASSY	SSP025016M
KM40TSDWLN L08KC04	IWSN433	KMSP415IP	CM234R ASSY	SSP025016M



■ MCKN 75°



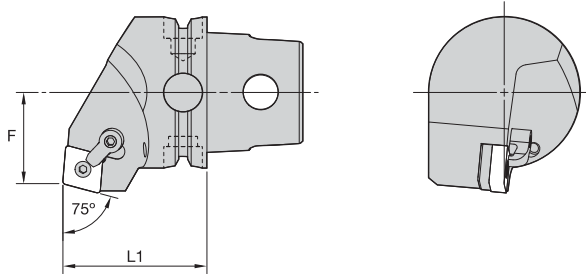
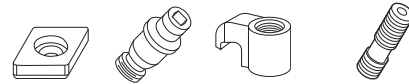
order number	catalog number	L1		F		D min		gage insert	shim	lock pin	clamp	clamp screw	kg	lbs
		mm	in	mm	in	mm	in							
	right hand													
3901336	KM40TSMCKNR12	40	1.575	27	1.063	54	2.126	CN..120408/CN..432	ICSN432	KLM46	CKM20LP	STCM11	0,35	.76
	left hand													
3901335	KM40TSMCKNL12	40	1.575	27	1.063	54	2.126	CN..120408/CN..432	ICSN432	KLM46	CKM20LP	STCM11	0,35	.76



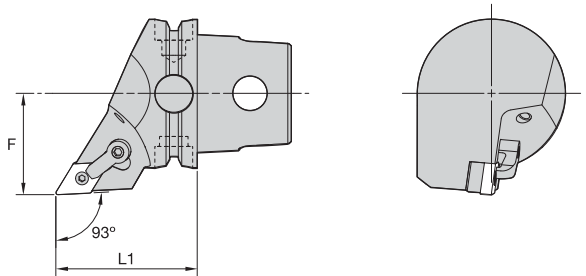
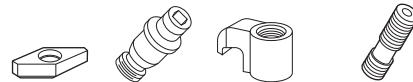
■ MCLN 95°



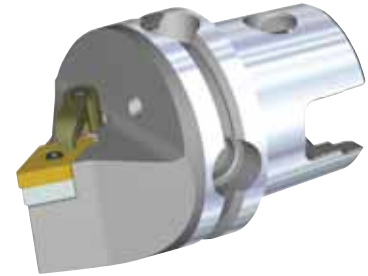
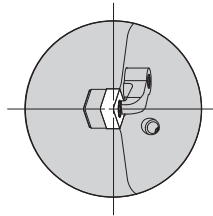
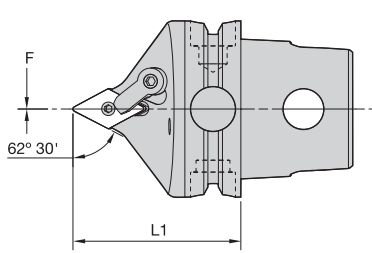
order number	catalog number	L1		F		D min		gage insert	shim	lock pin	clamp	clamp screw	kg	lbs
		mm	in	mm	in	mm	in							
	right hand													
2647737	KM40TSMCLNR12	40	1.575	27	1.063	54	2.126	CN..120408/CN..432	ICSN432	KLM46	CKM20LP	STCM11	0,32	.70
3901339	KM40TSMCLNR16	40	1.575	27	1.063	120	4.724	CN..160612/CN..543	ICSN533	KLM58	CKM20LP	STCM11	0,33	.73
	left hand													
3901337	KM40TSMCLNL12	40	1.575	27	1.063	54	2.126	CN..120408/CN..432	ICSN432	KLM46	CKM20LP	STCM11	0,32	.70
3901338	KM40TSMCLNL16	40	1.575	27	1.063	120	4.724	CN..160612/CN..543	ICSN533	KLM58	CKM20LP	STCM11	0,33	.73


■ MCRN 75°


order number	catalog number	L1		F		gage insert	shim	lock pin	clamp	clamp screw	kg	lbs
		mm	in	mm	in							
3901341	right hand	40	1.575	24	.945	CN..120408/CN..432	ICSN432	KLM46	CKM20LP	STCM11	0,33	.72
	KM40TSMCRNR12											
3901340	left hand	40	1.575	24	.945	CN..120408/CN..432	ICSN432	KLM46	CKM20LP	STCM11	0,33	.72
	KM40TSMCRNL12											


■ MDJN 93°


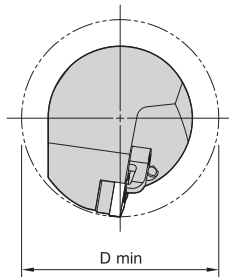
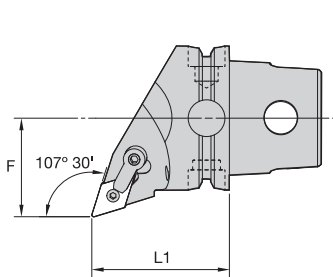
order number	catalog number	L1		F		gage insert	shim	lock pin	clamp	clamp screw	kg	lbs
		mm	in	mm	in							
3901291	KM40TSMDJNR1504	40	1.575	27	1.063	DN..150408/DN..432	IDSN442	KLM46L	CKM23LP	STCM11	0,26	.570
3901292	KM40TSMDJNR1506	40	1.575	27	1.063	DN..150608/DN..442	IDSN432	KLM46L	CKM23LP	STCM11	0,26	.570
3901289	KM40TSMDJNL1504	40	1.575	27	1.063	DN..150408/DN..432	IDSN442	KLM46L	CKM23LP	STCM11	0,26	.570
3901290	KM40TSMDJNL1506	40	1.575	27	1.063	DN..150608/DN..442	IDSN432	KLM46L	CKM23LP	STCM11	0,26	.570



■ MDPN 62° 30'



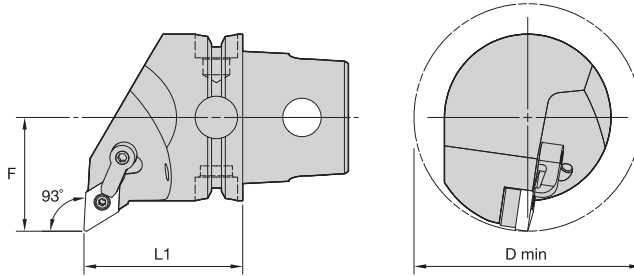
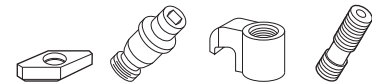
order number	catalog number	L1		F		gage insert	shim	lock pin	clamp	clamp screw	kg	lbs
		mm	in	mm	in							
3901293	KM40TSMDPNN1504	40	1.575	0	.000	DN..150408/DN..432	IDSN442	KLM46L	CKM20LP	STCM11	0,23	.50
3901294	KM40TSMDPNN1506	40	1.575	0	.000	DN..150608/DN..442	IDSN432	KLM46L	CKM20LP	STCM11	0,22	.49



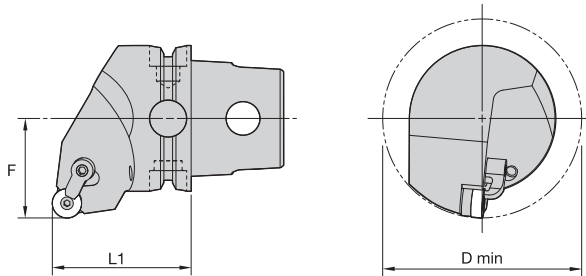
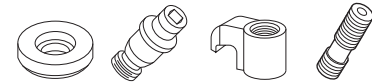
■ MDQN 107° 30'



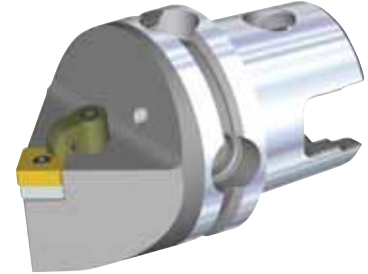
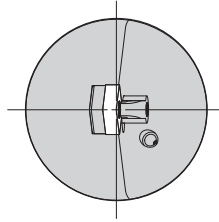
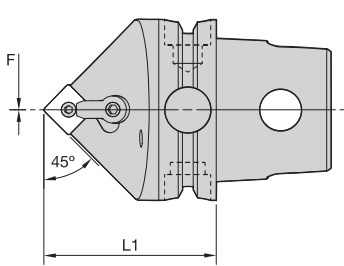
order number	catalog number	L1		F		D min		gage insert	shim	lock pin	clamp	clamp screw	kg	lbs
		mm	in	mm	in	mm	in							
3901297	KM40TSMDQNR1504	40	1.575	27	1.063	54	2.126	DN..150408/DN..432	IDSN442	KLM46L	CKM23LP	STCM11	0,29	.63
3901298	KM40TSMDQNR1506	40	1.575	27	1.063	54	2.126	DN..150608/DN..442	IDSN432	KLM46L	CKM23LP	STCM11	0,28	.62
3901295	KM40TSMDQNL1504	40	1.575	27	1.063	54	2.126	DN..150408/DN..432	IDSN442	KLM46L	CKM23LP	STCM11	0,28	.63
3901296	KM40TSMDQNL1506	40	1.575	27	1.063	54	2.126	DN..150608/DN..442	IDSN432	KLM46L	CKM23LP	STCM11	0,28	.62


MDUN 93°


order number	catalog number	L1		F		D min		gage insert	shim	lock pin	clamp	clamp screw	kg	lbs	
		mm	in	mm	in	mm	in								
		right hand													
3901301	KM40TSM DUNR1504	40	1.575	27	1.063	54	2.126	DN..150408/DN..432	IDSN442	KLM46L	CKM23LP	STCM11	0,31	.69	
3901302	KM40TSM DUNR1506	40	1.575	27	1.063	54	2.126	DN..150608/DN..442	IDSN432	KLM46L	CKM23LP	STCM11	0,31	.68	
		left hand													
3901299	KM40TSM DUNL1504	40	1.575	27	1.063	54	2.126	DN..150408/DN..432	IDSN442	KLM46L	CKM23LP	STCM11	0,31	.69	
3901300	KM40TSM DUNL1506	40	1.575	27	1.063	54	2.126	DN..150608/DN..442	IDSN432	KLM46L	CKM23LP	STCM11	0,31	.68	


MRGN 0°


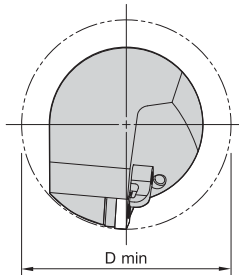
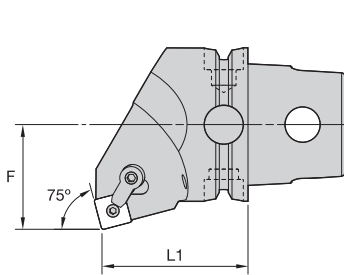
order number	catalog number	L1		F		D min		gage insert	shim	lock pin	clamp	clamp screw	kg	lbs	
		mm	in	mm	in	mm	in								
		right hand													
3901306	KM40TSM RGNR12	40	1.575	27	1.063	100	3.937	RN..120400/RN..43	IRSN43	KLM46	CKM20LP	STCM11	0,32	.71	
		left hand													
3901305	KM40TSM RGNL12	40	1.575	27	1.063	100	3.937	RN..120400/RN..43	IRSN43	KLM46	CKM20LP	STCM11	0,32	.71	



■ MSDN 45°



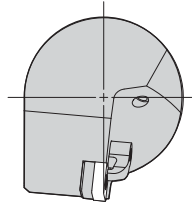
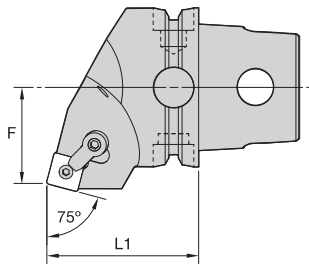
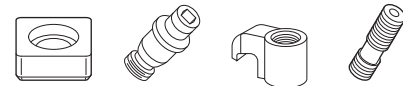
order number	catalog number	L1		F		gage insert	shim	lock pin	clamp	clamp screw	kg	lbs
		mm	in	mm	in							
3901307	KM40TSMDDN12	40	1.575	0	.000	SN..120408/SN..432	ISSN432	KLM46	CKM20LP	STCM11	0,26	.57



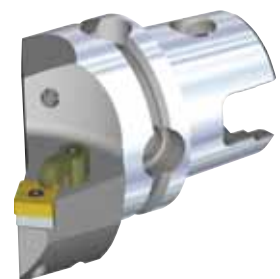
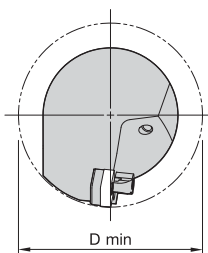
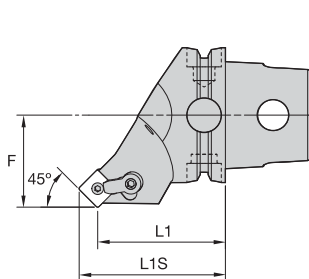
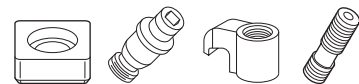
■ MSKN 75°



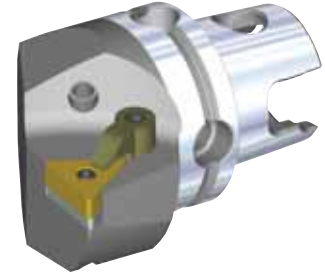
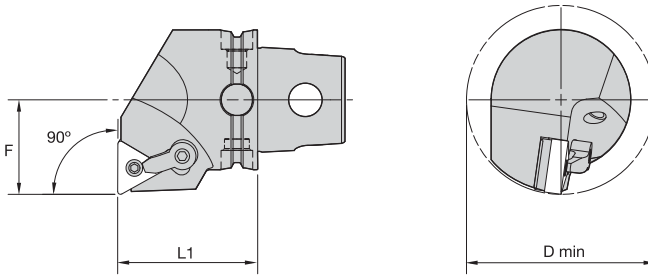
order number	catalog number	L1		F		D min		gage insert	shim	lock pin	clamp	clamp screw	kg	lbs
		mm	in	mm	in	mm	in							
3901309	KM40TSMKSKNR12	40	1.575	27	1.063	54	2.126	SN..120408/SN..432	ISSN432	KLM46	CKM20LP	STCM11	0,36	.80
3901308	KM40TSMKSKNL12	40	1.575	27	1.063	54	2.126	SN..120408/SN..432	ISSN432	KLM46	CKM20LP	STCM11	0,36	.80


MSRN 75°


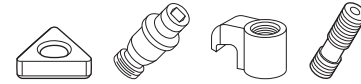
order number	catalog number	L1		F		gage insert	shim	lock pin	clamp	clamp screw	kg	lbs
		mm	in	mm	in							
right hand												
3901311	KM40TMSRNR12	40	1.575	24	.945	SN..120408/SN..432	ISSN432	KLM46	CKM20LP	STCM11	0,31	.67
3901312	KM40TMSRNR15	40	1.575	24	.945	SN..150612/SN..543	ISSN533	KLM58	CKM20LP	STCM11	0,33	.73
left hand												
3901310	KM40TMSRNL12	40	1.575	24	.945	SN..120408/SN..432	ISSN432	KLM46	CKM20LP	STCM11	0,31	.68


MSSN 45°


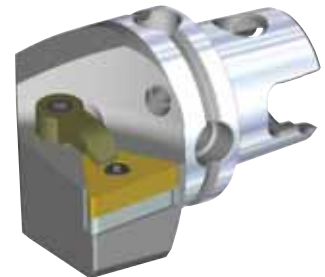
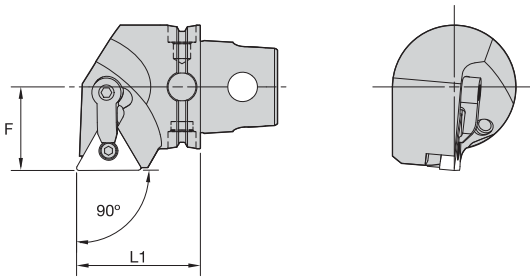
order number	catalog number	L1		L1S		F		D min		gage insert	shim	lock pin	clamp	clamp screw	kg	lbs
		mm	in	mm	in	mm	in	mm	in							
right hand																
3901314	KM40TSMSSNR12	40	1.575	48,3	1.903	27	1.063	80	3.150	SN..120408/SN..432	ISSN432	KLM46	CKM20LP	STCM11	0,32	.72
left hand																
3901313	KM40TSMSSNL12	40	1.575	48,3	1.903	27	1.063	80	3.150	SN..120408/SN..432	ISSN432	KLM46	CKM20LP	STCM11	0,32	.71



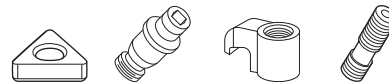
■ MTFN 90°



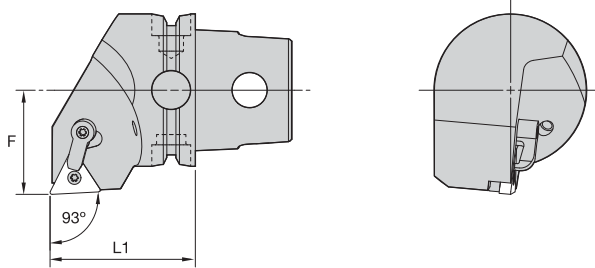
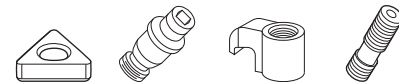
order number	catalog number	L1		F		D min		gage insert	shim	lock pin	clamp	clamp screw	kg	lbs
		mm	in	mm	in	mm	in							
	right hand													
3902249	KM40SMTFNR16	40	1.575	27	1.063	54	2.126	TN..160408/TN..332	ITSN322	KLM34L	CKM7LP	STCM9	0,35	.78
	left hand													
3902247	KM40SMTFNL16	40	1.575	27	1.063	54	2.126	TN..160408/TN..332	ITSN322	KLM34L	CKM7LP	STCM9	0,35	.78



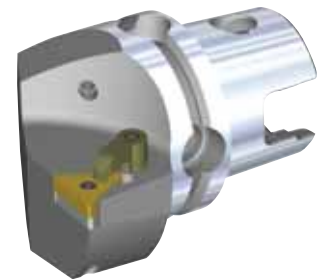
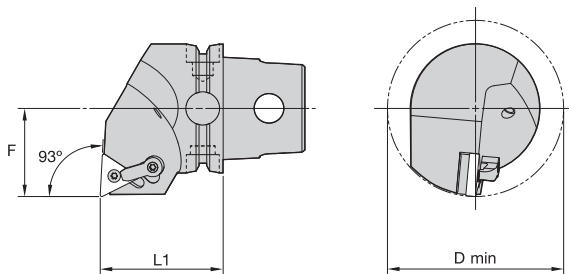
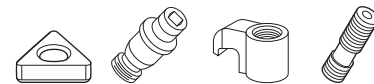
■ MTGN 90°



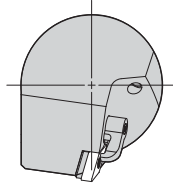
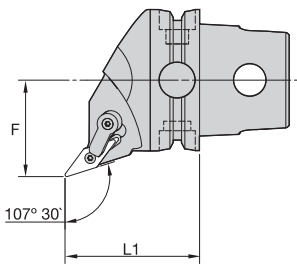
order number	catalog number	L1		F		gage insert	shim	lock pin	clamp	clamp screw	kg	lbs
		mm	in	mm	in							
	right hand											
3902251	KM40SMTGNR22	40	1.575	27	1.063	TN..220408/TN..432	ITSN433	KLM46	CKM23LP	STCM11	0,35	.78
	left hand											
3902250	KM40SMTGNL22	40	1.575	27	1.063	TN..220408/TN..432	ITSN433	KLM46	CKM23LP	STCM11	0,35	.78


■ MTJN 93°


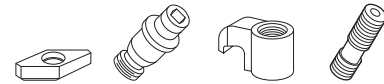
order number	catalog number	L1		F		gage insert	shim	lock pin	clamp	clamp screw	kg	lbs
		mm	in	mm	in							
right hand												
3902274	KM40TSM TJNR16	40	1.575	27	1.063	TN..160408/TN..332	ITSN322	KLM34L	CKM7LP	STCM9	0,33	.73
3902275	KM40TSM TJNR22	40	1.575	27	1.063	TN..220408/TN..432	ITSN433	KLM46	CKM23LP	STCM11	0,36	.79
left hand												
3902252	KM40TSM TJNL16	40	1.575	27	1.063	TN..160408/TN..332	ITSN322	KLM34L	CKM7LP	STCM9	0,33	.73
3902273	KM40TSM TJNL22	40	1.575	27	1.063	TN..220408/TN..432	ITSN433	KLM46	CKM23LP	STCM11	0,36	.79


■ MTUN 93°


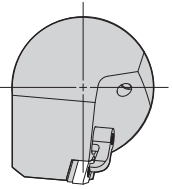
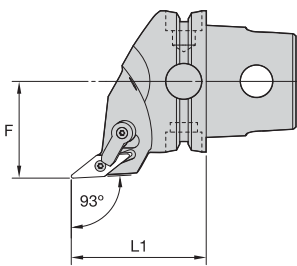
order number	catalog number	L1		F		D min		gage insert	shim	lock pin	clamp	clamp screw	kg	lbs
		mm	in	mm	in	mm	in							
right hand														
3902278	KM40TSM TUNR16	40	1.575	27	1.063	54	2.126	TN..160408/TN..332	ITSN322	KLM34L	CKM7LP	STCM9	0,34	.76
left hand														
3902276	KM40TSM TUNL16	40	1.575	27	1.063	54	2.126	TN..160408/TN..332	ITSN322	KLM34L	CKM7LP	STCM9	0,34	.76
3902277	KM40TSM TUNL22	40	1.575	27	1.063	54	2.126	TN..220408/TN..432	ITSN433	KLM46	CKM20LP	STCM11	0,34	.75



■ MVHN 107° 30'



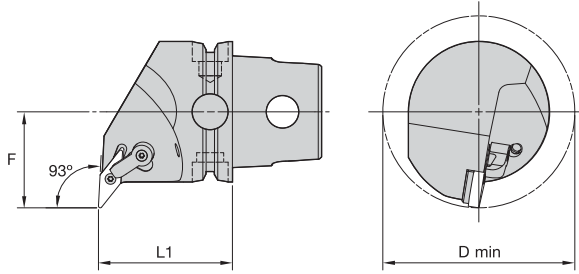
order number	catalog number	L1		F		gage insert	shim	lock pin	clamp	clamp screw	kg	lbs
		mm	in	mm	in							
		right hand										
3902239	KM40TSMVHNR16050M	50	1.969	27	1.063	VN..160408/VN..332	IVSN322	KLM34L	CKM23LP	STCM11	0,35	.77
		left hand										
3902238	KM40TSMVHNL16050M	50	1.969	27	1.063	VN..160408/VN..332	IVSN322	KLM34L	CKM23LP	STCM11	0,35	.77



■ MVJN 93°



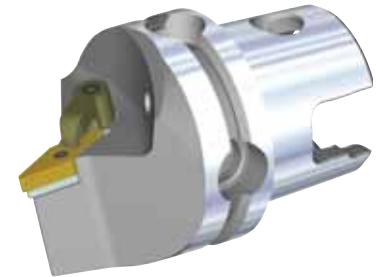
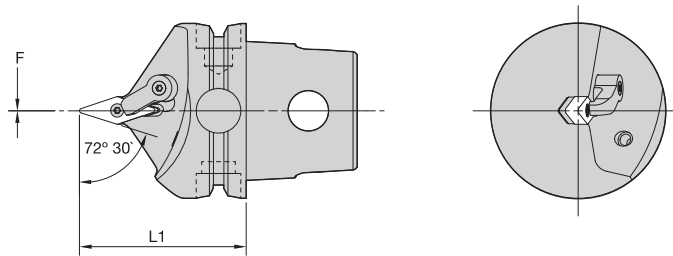
order number	catalog number	L1		F		gage insert	shim	lock pin	clamp	clamp screw	kg	lbs
		mm	in	mm	in							
		right hand										
3902241	KM40TSMVJNR16045M	45	1.772	27	1.063	VN..160408/VN..332	IVSN322	KLM34L	CKM20LP	STCM11	0,30	.65
		left hand										
3902240	KM40TSMVJNL16045M	45	1.772	27	1.063	VN..160408/VN..332	IVSN322	KLM34L	CKM20LP	STCM11	0,30	.65



■ MVUN 93°



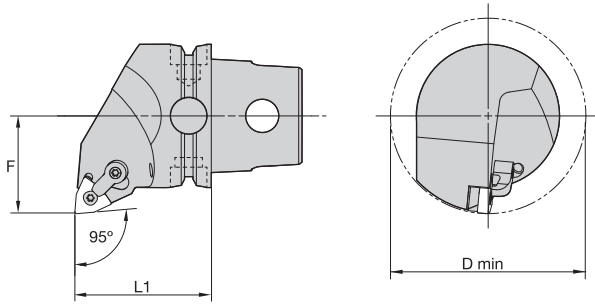
order number	catalog number	L1		F		D min		gage insert	shim	lock pin	clamp	clamp screw	kg	lbs	
		mm	in	mm	in	mm	in								
		right hand													
3902253	KM40TSMVUNR16045M	45	1.772	27	1.063	54	2.126	VN..160408/VN..332	IVSN322	KLM34L	CKM23LP	STCM11	0,36	.79	
		left hand													
3902242	KM40TSMVUNL16045M	45	1.772	27	1.063	54	2.126	VN..160408/VN..332	IVSN322	KLM34L	CKM23LP	STCM11	0,36	.79	



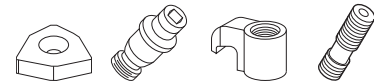
■ MVVN 72° 30'



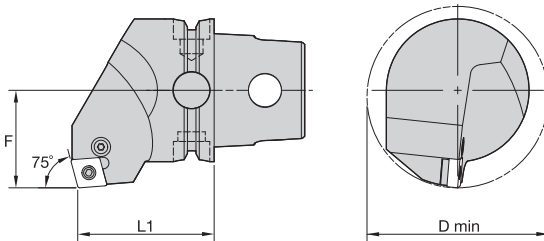
order number	catalog number	L1		F		gage insert	shim	lock pin	clamp	clamp screw	kg	lbs
		mm	in	mm	in							
3902254	KM40TSMVNN16050M	50	1.969	0	.000	VN..160408/VN..332	IVSN322	KLM34L	CKM20LP	STCM11	0,29	.64



■ MWLN 95°



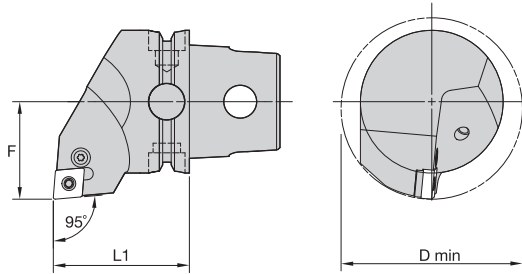
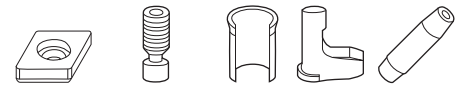
order number	catalog number	L1		F		D min		gage insert	shim	lock pin	clamp	clamp screw	kg	lbs
		mm	in	mm	in	mm	in							
	right hand													
3902256	KM40TSMWLNRO8	40	1.575	27	1.063	54	2.126	WN..080408/WN..432	IWSN433	KLM46	CKM20LP	STCM11	0,34	.76
	left hand													
3902255	KM40TSMWLNLO8	40	1.575	27	1.063	54	2.126	WN..080408/WN..432	IWSN433	KLM46	CKM20LP	STCM11	0,34	.76



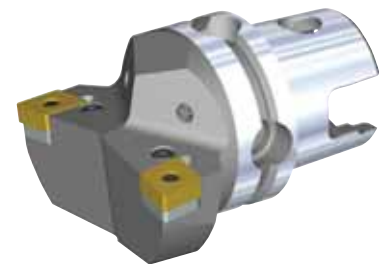
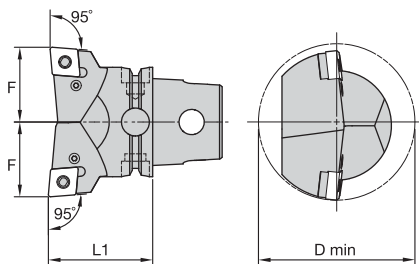
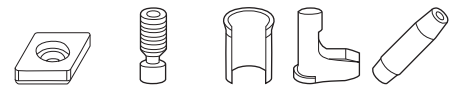
■ PCKN 75°



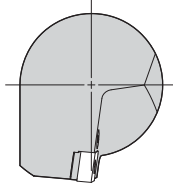
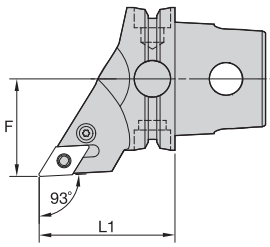
order number	catalog number	L1		F		D min		gage insert	shim	lever screw	shim pin	toggle lever	punch	kg	lbs
		mm	in	mm	in	mm	in								
	right hand														
3902261	KM40TSPCKNR12	40	1.575	27	1.063	50	1.969	CN..120408/CN..432	512.112	514.123	513.023	511.023	515.018	0,36	.78
	left hand														
3902260	KM40TSPCKNL12	40	1.575	27	1.063	50	1.969	CN..120408/CN..432	512.112	514.123	513.023	511.023	515.018	0,35	.77


■ PCLN 95°


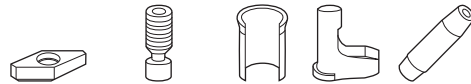
order number	catalog number	L1		F		D min		gage insert	shim	lever screw	shim pin	toggle lever	punch	kg lbs
		mm	in	mm	in	mm	in							
right hand														
3902315	KM40TSPCLNR09	40	1.575	27	1.063	50	1.969	CN..090308/CN..322	512.111	514.118	513.019	511.018	515.018	0,32 .71
3902316	KM40TSPCLNR12	40	1.575	27	1.063	50	1.969	CN..120408/CN..432	512.112	514.123	513.023	511.023	515.018	0,32 .70
left hand														
3902262	KM40TSPCLNL09	40	1.575	27	1.063	50	1.969	CN..090308/CN..322	512.111	514.118	513.019	511.018	515.018	0,33 .72
3902313	KM40TSPCLNL12	40	1.575	27	1.063	50	1.969	CN..120408/CN..432	512.112	514.123	513.023	511.023	515.018	0,32 .71


■ PCLN-2W 95°


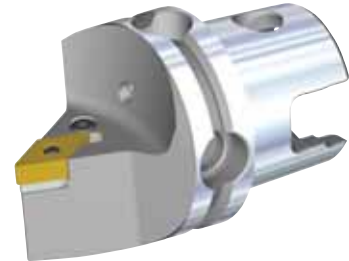
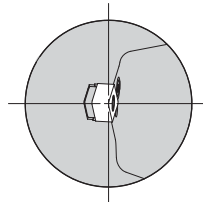
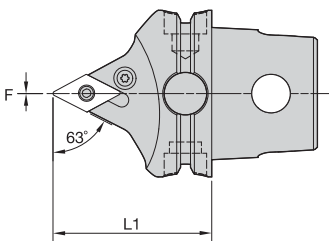
order number	catalog number	L1		F		D min		gage insert	shim	lever screw	shim pin	toggle lever	punch	kg lbs
		mm	in	mm	in	mm	in							
right hand														
3902317	KM40TSPCLNR122W	40	1.575	27	1.063	60	2.362	CN..120408/CN..432	512.112	514.123	513.023	511.023	515.018	0,35 .77
left hand														
3902314	KM40TSPCLNL122W	40	1.575	27	1.063	60	2.362	CN..120408/CN..432	512.112	514.123	513.023	511.023	515.018	0,35 .77



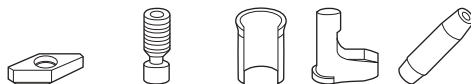
■ PDJN 93°



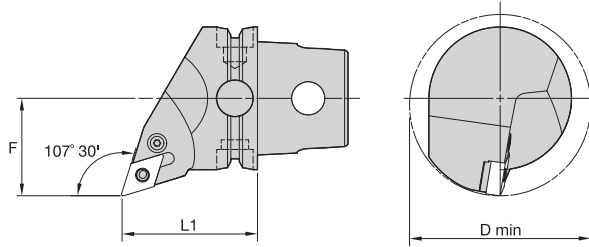
order number	catalog number	L1		F		gage insert	shim	lever screw	shim pin	toggle lever	punch	kg	lbs
		mm	in	mm	in								
	right hand												
3902312	KM40TSPDJNR11	40	1.575	27	1.063	DN..110408/DN..332	512.060	514.118	513.060	511.060	515.018	0,26	.56
3902323	KM40TSPDJNR15	40	1.575	27	1.063	DN..150608/DN..442	512.153	514.128	513.023	511.024	515.018	0,26	.56
	left hand												
3902310	KM40TSPDJNL11	40	1.575	27	1.063	DN..110408/DN..332	512.060	514.118	513.060	511.060	515.018	0,25	.56
3902311	KM40TSPDJNL15	40	1.575	27	1.063	DN..150608/DN..442	512.153	514.128	513.023	511.024	515.018	0,26	.56



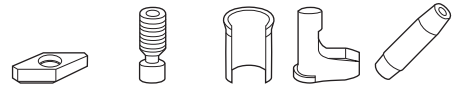
■ PDNN 63°



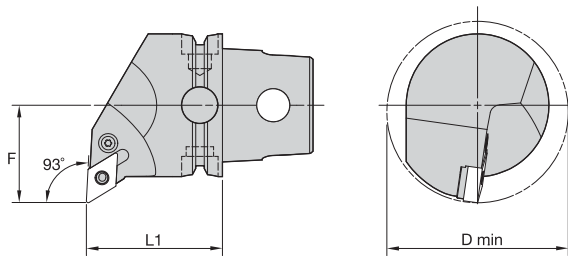
order number	catalog number	L1		F		gage insert	shim	lever screw	shim pin	toggle lever	punch	kg	lbs
		mm	in	mm	in								
	right hand												
3902325	KM40TSPDNNR15	45	1.772	0	.000	DN..150608/DN..442	512.153	514.128	513.023	511.024	515.018	0,24	.52
	left hand												
3902324	KM40TSPDNNL15	45	1.772	0	.000	DN..150608/DN..442	512.153	514.128	513.023	511.024	515.018	0,24	.52



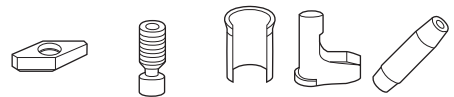
■ PDQN 107° 30'



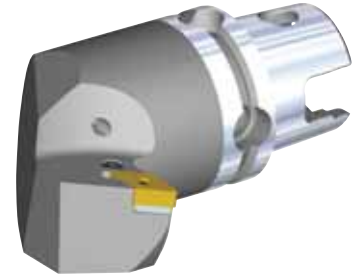
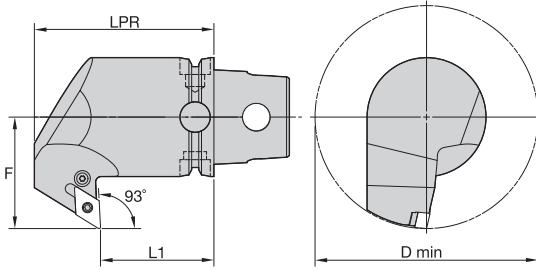
order number	catalog number	L1		F		D min		gage insert	shim	lever screw	shim pin	toggle lever	punch	kg	lbs
		mm	in	mm	in	mm	in								
	right hand														
3902327	KM40TSPDQNR11	40	1.575	27	1.063	50	1.969	DN..110408/DN..332	512.060	514.118	513.060	511.060	515.018	0,29	.63
	left hand														
3902326	KM40TSPDQNL11	40	1.575	27	1.063	50	1.969	DN..110408/DN..332	512.060	514.118	513.060	511.060	515.018	0,29	.63



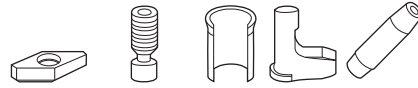
■ PDUN 93°



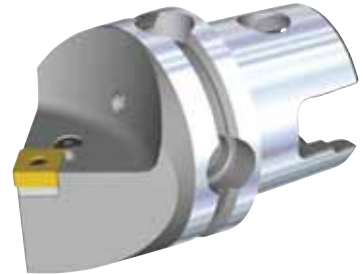
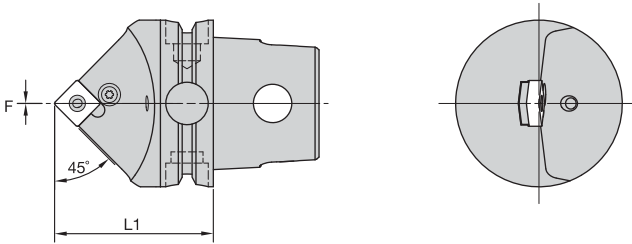
order number	catalog number	L1		F		D min		gage insert	shim	lever screw	shim pin	toggle lever	punch	kg	lbs
		mm	in	mm	in	mm	in								
	right hand														
3902330	KM40TSPDUNR11	40	1.575	27	1.063	50	1.969	DN..110408/DN..332	512.060	514.118	513.060	511.060	515.018	0,33	.72
3902331	KM40TSPDUNR15	40	1.575	27	1.063	50	1.969	DN..150608/DN..442	512.153	514.128	513.023	511.024	515.018	0,32	.71
	left hand														
3902328	KM40TSPDUNL11	40	1.575	27	1.063	50	1.969	DN..110408/DN..332	512.060	514.118	513.060	511.060	515.018	0,31	.68
3902329	KM40TSPDUNL15	40	1.575	27	1.063	50	1.969	DN..150608/DN..442	512.153	514.128	513.023	511.024	515.018	0,32	.71



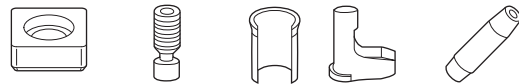
■ PDXN 93°



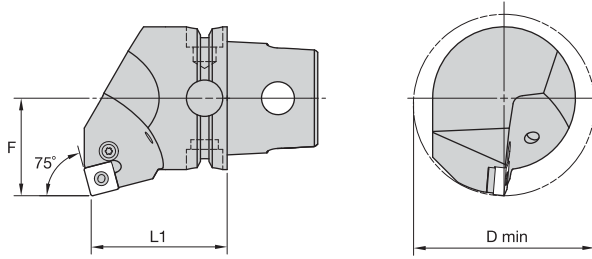
order number	catalog number	L1		LPR		F		D min		gage insert	shim	lever screw	shim pin	toggle lever	punch	kg	lbs
		mm	in	mm	in	mm	in	mm	in								
		right hand															
3902333	KM40TSPDXNR15	40	1.575	65	2.559	47	1.850	94	3.701	DN..150608/DN..442	512.153	514.128	513.023	511.024	515.018	0,66	1.45
		left hand															
3902332	KM40TSPDXNL15	40	1.575	65	2.559	47	1.850	94	3.701	DN..150608/DN..442	512.153	514.128	513.023	511.024	515.018	0,65	1.44



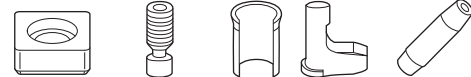
■ PSDN 45°



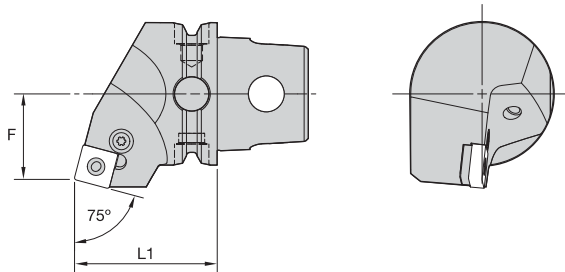
order number	catalog number	L1		F		gage insert	shim	lever screw	shim pin	toggle lever	punch	kg	lbs
		mm	in	mm	in								
3950775	KM40TSPSDNN09	40	1.575	0	.000	SN..090308/SN..322	512.053	514.118	513.019	511.018	515.018	0,26	.57
3950776	KM40TSPSDNN12	40	1.575	0	.000	SN..120408/SN..432	512.063	514.123	513.023	511.023	515.018	0,25	.54



■ PSKN 75°



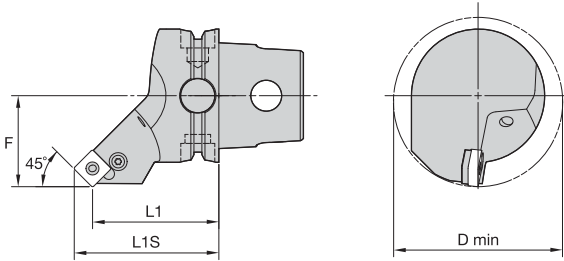
order number	catalog number	L1		F		D min		gage insert	shim	lever screw	shim pin	toggle lever	punch	kg	lbs
		mm	in	mm	in	mm	in								
	right hand														
3950778	KM40TSPSKNR12	40	1.575	27	1.063	50	1.969	SN..120408/SN..432	512.063	514.123	513.023	511.023	515.018	0,36	.79
	left hand														
3950777	KM40TSPSKNL12	40	1.575	27	1.063	50	1.969	SN..120408/SN..432	512.063	514.123	513.023	511.023	515.018	0,36	.79



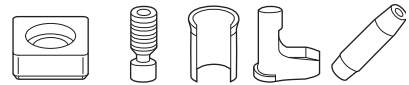
■ PSRN 75°



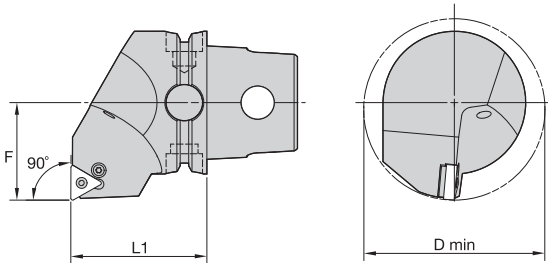
order number	catalog number	L1		F		gage insert	shim	lever screw	shim pin	toggle lever	punch	kg	lbs
		mm	in	mm	in								
	right hand												
3950780	KM40TSPSRNR12	40	1.575	24	.945	SN..120408/SN..432	512.063	514.123	513.023	511.023	515.018	0,31	.69
	left hand												
3950779	KM40TSPSRNL12	40	1.575	24	.945	SN..120408/SN..432	512.063	514.123	513.023	511.023	515.018	0,31	.69



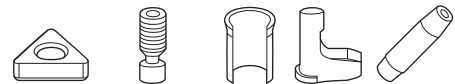
■ PSSN 45°



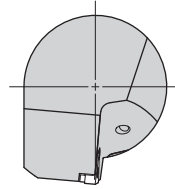
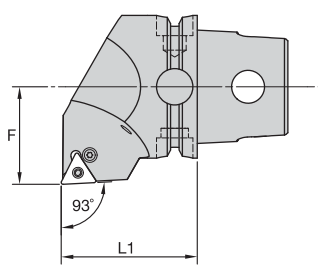
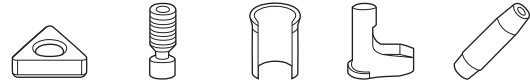
order number	catalog number	L1		L1S		F		D min		gage insert	shim	lever screw	shim pin	toggle lever	punch	kg	lbs
		mm	in	mm	in	mm	in	mm	in								
3950781	KM40TSPSSNR12	40	1.575	48,3	1.903	27	1.063	80	3.150	SN..120408/SN..432	512.063	514.123	513.023	511.023	515.018	0,31	.69



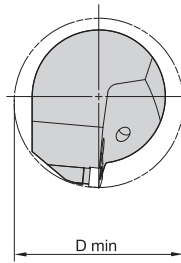
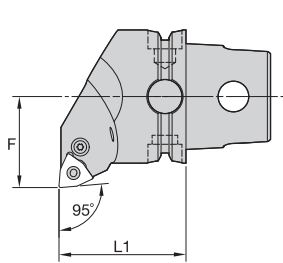
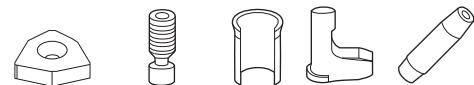
■ PTFN 90°



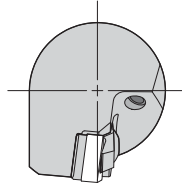
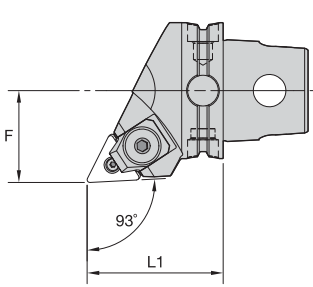
order number	catalog number	L1		F		D min		gage insert	shim	lever screw	shim pin	toggle lever	punch	kg	lbs
		mm	in	mm	in	mm	in								
3950783	KM40TSPTFNR16	40	1.575	27	1.063	50	1.969	TN..160408/TN..332	512.013	514.118	513.018	511.018	515.018	0,36	.78
3950782	KM40TSPTFNL16	40	1.575	27	1.063	50	1.969	TN..160408/TN..332	512.013	514.118	513.018	511.018	515.018	0,36	.79


PTJN 93°


order number	catalog number	L1		F		gage insert	shim	lever screw	shim pin	toggle lever	punch	kg	lbs
		mm	in	mm	in								
	right hand												
3950785	KM40TSPTJNR16	40	1.575	27	1.063	TN..160408/TN..332	512.013	514.118	513.018	511.018	515.018	0,34	.75
	left hand												
3950784	KM40TSPTJNL16	40	1.575	27	1.063	TN..160408/TN..332	512.013	514.118	513.018	511.018	515.018	0,34	.75


PWLN 95°


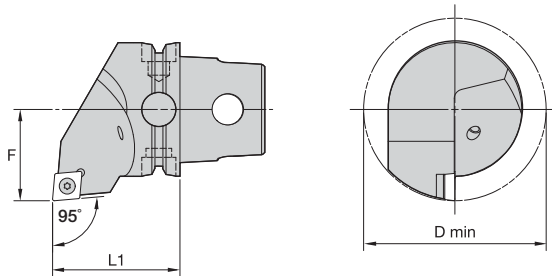
order number	catalog number	L1		F		D min	gage insert	shim	lever screw	shim pin	toggle lever	punch	kg	lbs
		mm	in	mm	in									
	right hand													
3950788	KM40TSPWLNRO6	40	1.575	27	1.063	50 1.969	WN..060408/WN..332	512.134	514.118	513.018	511.018	515.018	0,33	.73
3950789	KM40TSPWLNRO8	40	1.575	27	1.063	50 1.969	WN..080408/WN..432	512.135	514.123	513.023	511.023	515.018	0,32	.70
	left hand													
3950786	KM40TSPWLNLO6	40	1.575	27	1.063	50 1.969	WN..060408/WN..332	512.134	514.118	513.018	511.018	515.018	0,33	.73
3950787	KM40TSPWLNLO8	40	1.575	27	1.063	50 1.969	WN..080408/WN..432	512.135	514.123	513.023	511.023	515.018	0,32	.71



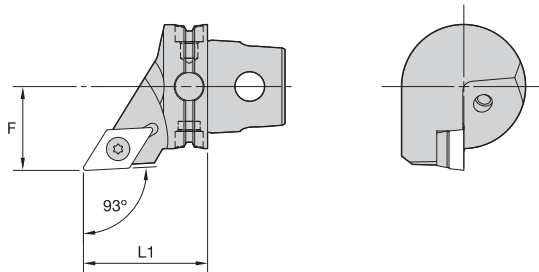
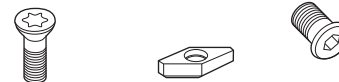
■ WTJN 93°



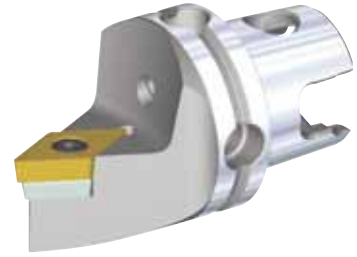
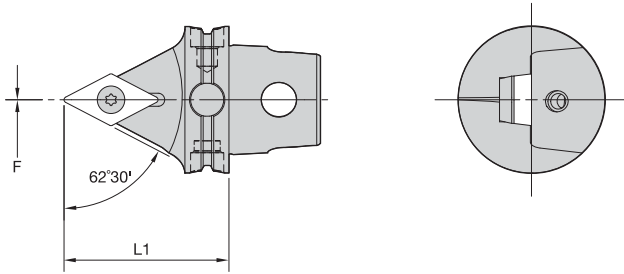
order number	catalog number	L1		F		gage insert	clamp	lock pin	shim	retaining ring	Wedgelock screw	kg	lbs
		mm	in	mm	in								
	right hand												
3964067	KM40TSWTJNR16	40	1.575	27	1.063	TN..160408/TN..332	WC4	FP4	SM290	MRA5	MS988	0,28	.63
	left hand												
3964066	KM40TSWTJNL16	40	1.575	27	1.063	TN..160408/TN..332	WC4	FP4	SM290	MRA5	MS988	0,28	.63


■ SCLC 95°

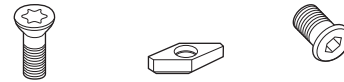

order number	catalog number	L1		F		D min		gage insert	insert screw	shim	shim screw	kg	lbs
		mm	in	mm	in	mm	in						
	right hand												
3960003	KM40TSSCLCR12	40	1.575	27	1.063	50	1.969	CC..120408/CC..432	MS1158	SKCP453	SRS4	0,32	.70
	left hand												
3959952	KM40TSSCLCL12	40	1.575	27	1.063	50	1.969	CC..120408/CC..432	MS1158	SKCP453	SRS4	0,32	.70


■ SDJC 93°


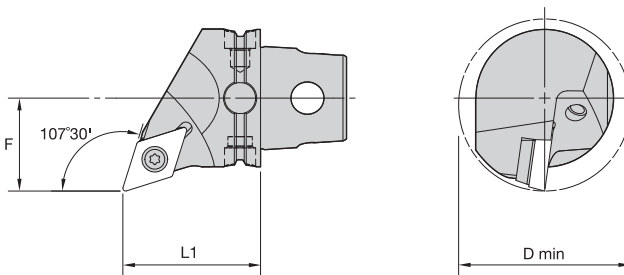
order number	catalog number	L1		F		gage insert	insert screw	shim	shim screw	kg	lbs
		mm	in	mm	in						
	right hand										
3960005	KM40TSSDJCR11	40	1.575	27	1.063	DC..11T308/DC..3252	MS1156	SKDP343	SRS3	0,25	.55
3960007	KM40TSSDJCR15	40	1.575	27	1.063	DC..150408/DC..432	MS1158	SKDP453	SRS4	0,24	.53
	left hand										
3960004	KM40TSSDJCL11	40	1.575	27	1.063	DC..11T308/DC..3252	MS1156	SKDP343	SRS3	0,25	.55
3960006	KM40TSSDJCL15	40	1.575	27	1.063	DC..150408/DC..432	MS1158	SKDP453	SRS4	0,24	.52



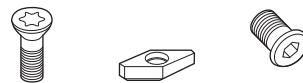
■ SDNC 62° 30'



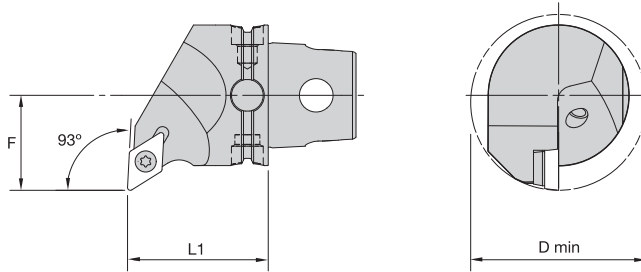
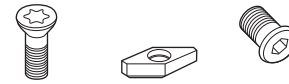
order number	catalog number	L1		F		gage insert	insert screw	shim	shim screw	kg	lbs
		mm	in	mm	in						
3960008	KM40TSSDNCN15045M	45	1.772	0	.000	DC..150408/DC..432	MS1158	SKDP453	SRS4	0,23	.50



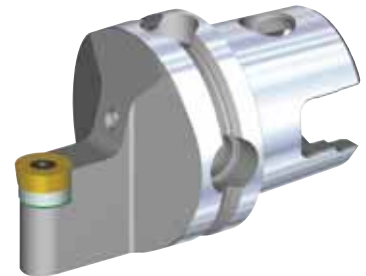
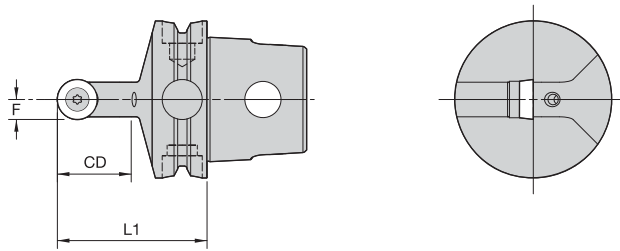
■ SDQC 107° 30'



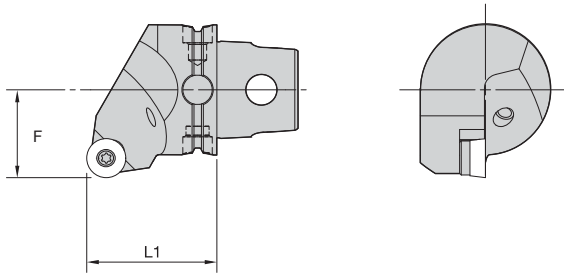
order number	catalog number	L1		F		D min		gage insert	insert screw	shim	shim screw	kg	lbs
		mm	in	mm	in	mm	in						
3960010	KM40TSSDQCR11	40	1.575	27	1.063	50	1.969	DC..11T308/DC..3252	MS1156	SKDP343	SRS3	0,27	.61
3960012	KM40TSSDQCR15	40	1.575	27	1.063	50	1.969	DC..150408/DC..432	MS1158	SKDP453	SRS4	0,27	.60
3960009	KM40TSSDQCL11	40	1.575	27	1.063	50	1.969	DC..11T308/DC..3252	MS1156	SKDP343	SRS3	0,27	.61
3960011	KM40TSSDQCL15	40	1.575	27	1.063	50	1.969	DC..150408/DC..432	MS1158	SKDP453	SRS4	0,27	.60


■ SDUC 93°


order number	catalog number	L1		F		D min		gage insert	insert screw	shim	shim screw	kg	lbs
		mm	in	mm	in	mm	in						
3960014	right hand	40	1.575	27	1.063	50	1.969	DC..11T308/DC..3252	MS1156	SKDP343	SRS3	0,30	.66
	KM40TSSDUCR11												
3960013	left hand	40	1.575	27	1.063	50	1.969	DC..11T308/DC..3252	MS1156	SKDP343	SRS3	0,30	.66
	KM40TSSDUCL11												


■ SRDC 0°

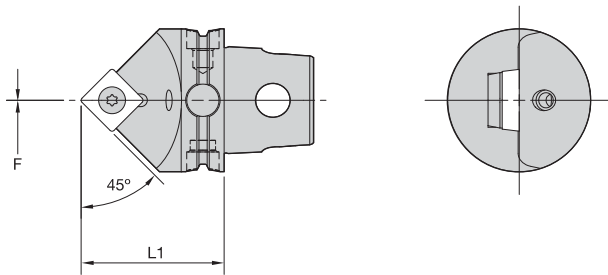

order number	catalog number	L1		F		CD		gage insert	insert screw	shim	shim screw	kg	lbs
		mm	in	mm	in	mm	in						
3960015	KM40TSSRDCN06	40	1.575	3	.118	12	.472	RC..0602M0	MS1153	—	—	0,22	.48
3960016	KM40TSSRDCN08	40	1.575	4	.158	16	.630	RC..0803M0	MS1154	—	—	0,22	.48
3960017	KM40TSSRDCN10	40	1.575	5	.197	20	.787	RC..10T3M0	MS1156	SKRN100300	SRS3	0,21	.47



■ SRGC 0°



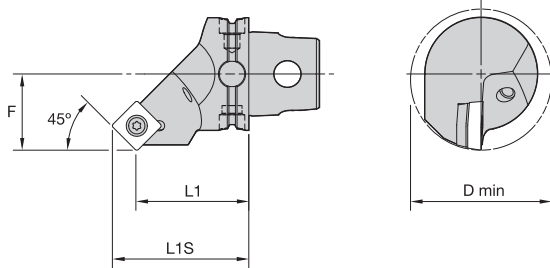
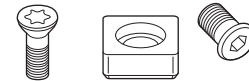
order number	catalog number	L1		F		gage insert	insert screw	shim	shim screw	kg	lbs
		mm	in	mm	in						
right hand											
3960019	KM40TSSRGCR10	40	1.575	27	1.063	RC..10T3M0	MS1156	SKRN100300	SRS3	0,31	.69
3960021	KM40TSSRGCR12	40	1.575	27	1.063	RC..1204M0	MS1156	SKRN1203M0	SRS3	0,31	.69
left hand											
3960018	KM40TSSRGCL10	40	1.575	27	1.063	RC..10T3M0	MS1156	SKRN100300	SRS3	0,32	.70
3960020	KM40TSSRGCL12	40	1.575	27	1.063	RC..1204M0	MS1156	SKRN1203M0	SRS3	0,31	.69



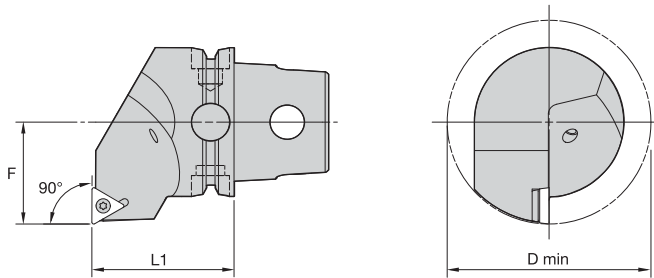
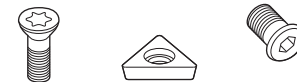
■ SSDC 45°



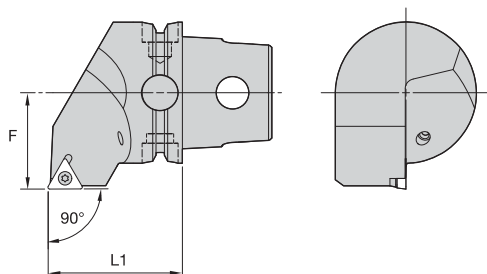
order number	catalog number	L1		F		gage insert	insert screw	shim	shim screw	kg	lbs
		mm	in	mm	in						
3960022	KM40TSSSDCN12	40	1.575	0	.000	SC..120408/SC..432	MS1158	SKSP453	SRS4	0,25	.55


SSSC 45°


order number	catalog number	L1		L1S		F		D min		gage insert	insert screw	shim	shim screw	kg	lbs
		mm	in	mm	in	mm	in	mm	in						
	right hand														
3960034	KM40TSSSSCR12	40	1.575	48,3	1.902	27	1.063	50	1.969	SC..120408/SC..432	MS1158	SKSP453	SRS4	0,29	.64
	left hand														
3960033	KM40TSSSSCL12	40	1.575	48,3	1.902	27	1.063	50	1.969	SC..120408/SC..432	MS1158	SKSP453	SRS4	0,29	.64


STFC 90°


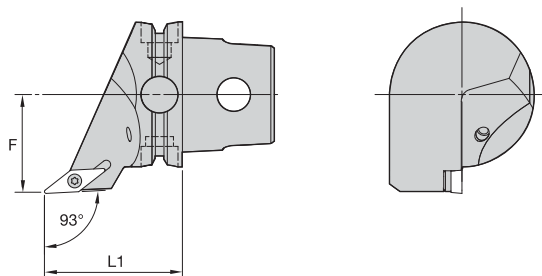
order number	catalog number	L1		F		D min		gage insert	insert screw	shim	shim screw	kg	lbs
		mm	in	mm	in	mm	in						
	right hand												
3960036	KM40TSSSTFCR16	40	1.575	27	1.063	50	1.969	TC..16T308/TC..3252	MS1156	SKTP343	SRS3	0,33	.72
	left hand												
3960035	KM40TSSSTFCL16	40	1.575	27	1.063	50	1.969	TC..16T308/TC..3252	MS1156	SKTP343	SRS3	0,33	.73



■ STGC 90°



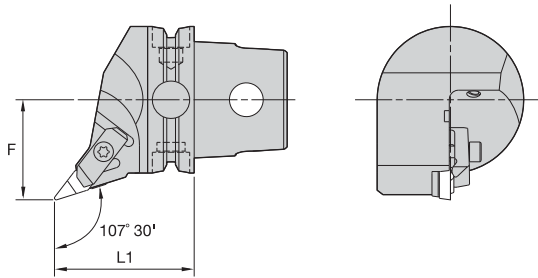
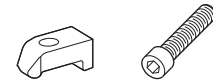
order number	catalog number	L1		F		gage insert	insert screw	shim	shim screw	kg	lbs
		mm	in	mm	in						
3960038	right hand KM40TSSSTGCR16	40	1.575	27	1.063	TC..16T308/TC..3252	MS1156	SKTP343	SRS3	0,33	.73
3960037	left hand KM40TSSSTGCL16	40	1.575	27	1.063	TC..16T308/TC..3252	MS1156	SKTP343	SRS3	0,33	.73



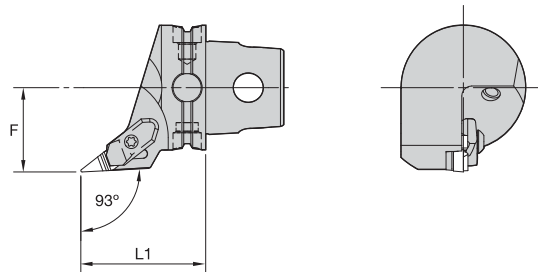
■ SVJB 93°



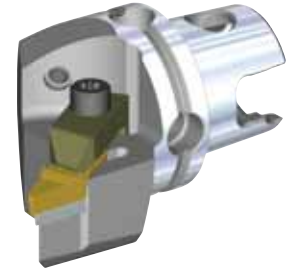
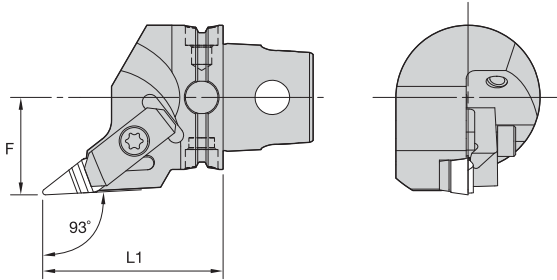
order number	catalog number	L1		F		gage insert	insert screw	shim	shim screw	kg	lbs
		mm	in	mm	in						
3960040	right hand KM40TSSVJBR16	47	1.850	27	1.063	VB..160408/VB..332	MS1156	SKVN343	SRS3	0,27	.59
3960039	left hand KM40TSSVJBL16	47	1.850	27	1.063	VB..160408/VB..332	MS1156	SKVN343	SRS3	0,27	.59


NVHC 107.5° • Metric CU


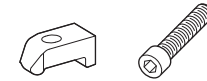
order number	catalog number	L1		F		gage insert	clamp	clamp screw	kg	lbs
		mm	in	mm	in					
3951859	KM40TSNVHCR16050M right hand	50	1.969	27	1.063	VCGR160408/VPGR332	CM113	MS1489	0,28	.62
3951858	KM40TSNVHCL16050M left hand	50	1.969	27	1.063	VCGR160408/VPGR332	CM114	MS1489	0,28	.62


NVJB 93° • Metric CU

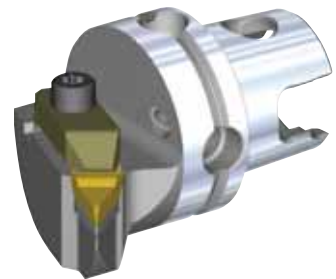
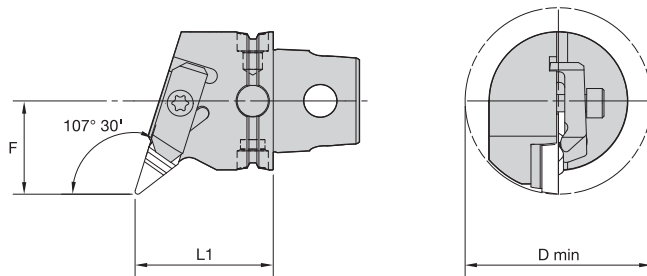

order number	catalog number	L1		F		gage insert	clamp	clamp screw	kg	lbs
		mm	in	mm	in					
3951861	KM40TSNVJBR11 right hand	40	1.575	27	1.063	VBMR110304/VBMR221	CM158	—	0,23	.52
3951860	KM40TSNVJBL11 left hand	40	1.575	27	1.063	VBMR110304/VBMR221	CM159	—	0,23	.52



■ NVJC 93° • Metric CU



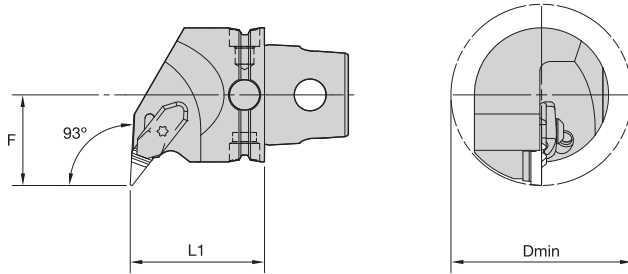
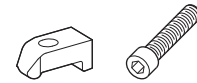
order number	catalog number	L1		F		gage insert	clamp	clamp screw	kg	lbs	
		mm	in	mm	in						
		right hand									
3951913	KM40TSNVJCR16050M	50	1.969	27	1.063	VCGR160408/VPGR332	CM113	MS1489	0,30	.67	
		left hand									
3951862	KM40TSNVJCL16050M	50	1.969	27	1.063	VCGR160408/VPGR332	CM114	MS1489	0,30	.67	



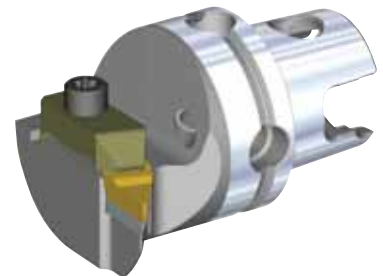
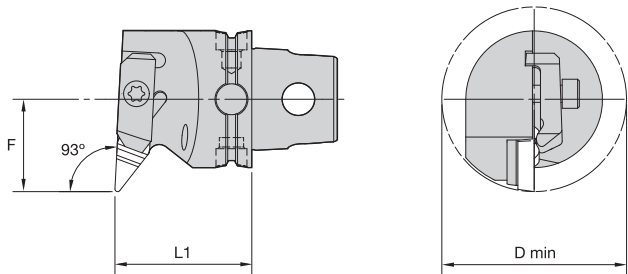
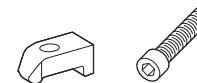
■ NVQC 107.5° • Metric CU



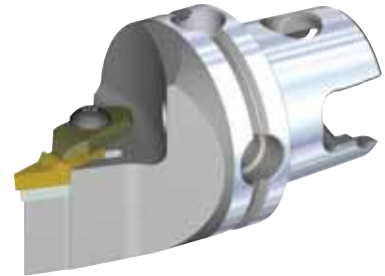
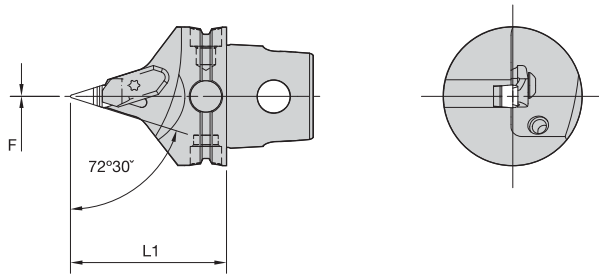
order number	catalog number	L1		F		D min		gage insert	clamp	clamp screw	kg	lbs
		mm	in	mm	in	mm	in					
		right hand										
3951915	KM40TSNVQCR16	40	1.575	27	1.063	54	2.126	VCGR160408/VPGR332	CM113	MS1489	0,27	.60
		left hand										
3951914	KM40TSNVQCL16	40	1.575	27	1.063	54	2.126	VCGR160408/VPGR332	CM114	MS1489	0,27	.60


■ NVUB 93° • Metric CU


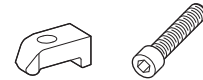
order number	catalog number	L1		F		D min		gage insert	clamp	clamp screw	kg	lbs
		mm	in	mm	in	mm	in					
3951917	right hand KM40TSNVUBR11	40	1.575	27	1.063	54	2.126	VCGR160408/VPGR332	CM159	—	0,31	.68
3951916	left hand KM40TSNVUBL11	40	1.575	27	1.063	54	2.126	VCGR160408/VPGR332	CM158	—	0,31	.68


■ NVUC 93° • Metric CU


order number	catalog number	L1		F		D min		gage insert	clamp	clamp screw	kg	lbs
		mm	in	mm	in	mm	in					
3951919	right hand KM40TSNVUCR16	40	1.575	27	1.063	54	2.126	VBMR110304/VBMR221	CM113	MS1489	0,32	.70
3951918	left hand KM40TSNVUCL16	40	1.575	27	1.063	54	2.126	VBMR110304/VBMR221	CM114	MS1489	0,32	.70



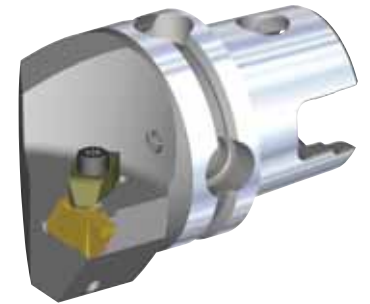
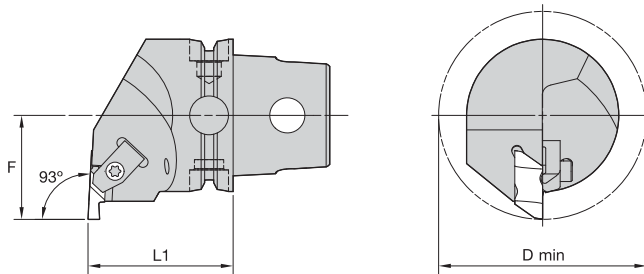
■ NVVB 72.5° • Metric CU



order number	catalog number	L1		F		gage insert	clamp	clamp screw	kg	lbs
		mm	in	mm	in					
3951920	left hand KM40TSNVVB11045M	45	1.772	0	.000	VCGR160408/VPGR332	CM158	—	0,23	.52



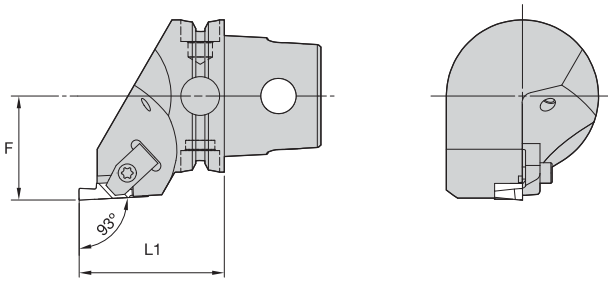
KM40TS Cutting Units



■ NE 93°



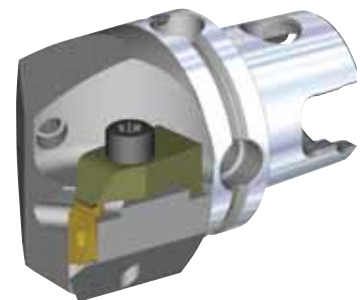
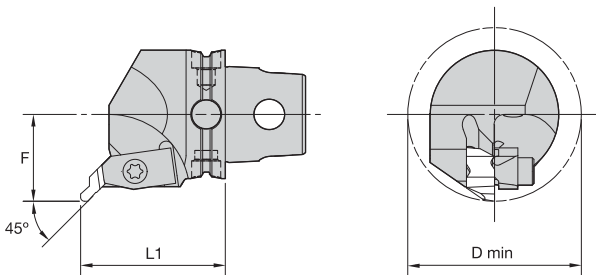
order number	catalog number	L1		F		D min		gage insert	clamp	clamp screw	kg	lbs
		mm	in	mm	in	mm	in					
right hand												
3902285	KM40TSNER2	40	1.575	27	1.063	54	2.126	NG2L	CM75	MS1488	0,31	.68
3902286	KM40TSNER3	40	1.575	27	1.063	54	2.126	NG3L	CM73	MS1489	0,32	.70
3902287	KM40TSNER4	40	1.575	27	1.063	54	2.126	NG4L	CM73	MS1489	0,30	.66
left hand												
3902132	KM40TSNEL2	40	1.575	27	1.063	54	2.126	NG2R	CM74	MS1488	0,31	.68
3902283	KM40TSNEL3	40	1.575	27	1.063	54	2.126	NG3R	CM72	MS1489	0,32	.70
3902284	KM40TSNEL4	40	1.575	27	1.063	54	2.126	NG4R	CM72	MS1489	0,30	.66



■ NS 93°



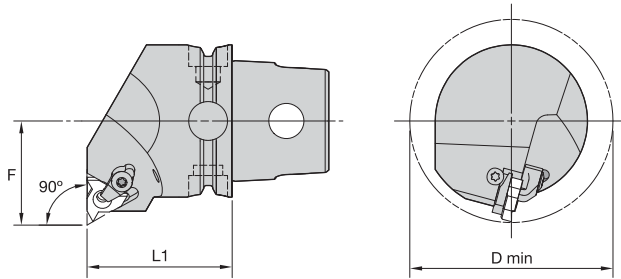
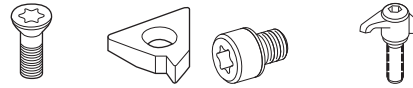
order number	catalog number	L1		F		gage insert	clamp	clamp screw	kg	lbs
		mm	in	mm	in					
right hand										
3902293	KM40TSNSR2	40	1.575	27	1.063	NG2R	CM74	MS1488	0,32	.70
3902294	KM40TSNSR3	47	1.850	27	1.063	NG3R	CM72	MS1489	0,32	.71
3902295	KM40TSNSR4	47	1.850	27	1.063	NG4R	CM72	MS1489	0,31	.68
left hand										
3902290	KM40TSNSL2	40	1.575	27	1.063	NG2L	CM75	MS1488	0,32	.70
3902291	KM40TSNSL3	47	1.850	27	1.063	NG3L	CM73	MS1489	0,33	.72
3902292	KM40TSNSL4	47	1.850	27	1.063	NG4L	CM73	MS1489	0,31	.68



■ NR 45°

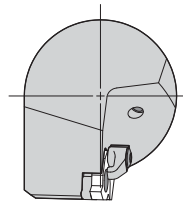
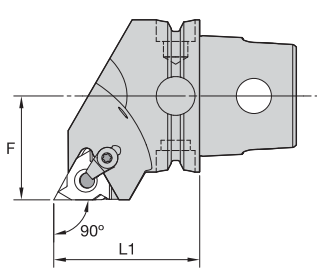


order number	catalog number	L1		F		D min		gage insert	clamp	clamping screw	kg	lbs
		mm	in	mm	in	mm	in					
right hand												
3902289	KM40TSNRR3045M	45	1.772	27	1.063	54	2.126	NU3L	CM73	MS1489	0,34	.75
left hand												
3902288	KM40TSNRL3045M	45	1.772	27	1.063	54	2.126	NU3R	CM72	MS1489	0,33	.74

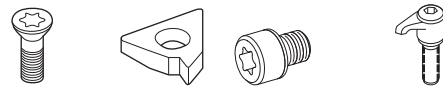

■ LSE-N 90° • Internal Only


order number	catalog number	L1		F		D min		gage insert	insert screw	shim	shim screw	clamp assembly	kg	lbs
		mm	in	mm	in	mm	in							
right hand														
3950832	KM40TSLSER16N	40	1.575	27	1.063	54	2.126	LT16NR	SSA3T	SMYI3	SSY3T	CKC3	0,35	.77
3950854	KM40TSLSER22N	40	1.575	27	1.063	54	2.126	LT22NR	SSA4T	SMYI4	SSY4T	CKC4	0,35	.77
3959399	KM40TSLSER27N	45	1.772	27	1.063	54	2.126	LT27NR	SSA5T	SMYI5	SSY5T	CKC5	0,39	.86
left hand														
3950831	KM40TSLSEL16N	40	1.575	27	1.063	54	2.126	LT16NL	SSA3T	SMYE3	SSY3T	CKC3	0,35	.77
3950853	KM40TSLSEL22N	40	1.575	27	1.063	54	2.126	LT22NL	SSA4T	SMYE4	SSY4T	CKC4	0,35	.77
3959398	KM40TSLSEL27N	45	1.772	27	1.063	54	2.126	LT27NL	SSA5T	SMYE5	SSY5T	CKC5	0,39	.86

NOTE: Cutting units are supplied with insert screw and clamp assembly. However, tools are designed to use either the insert screw or the clamp assembly, not both.

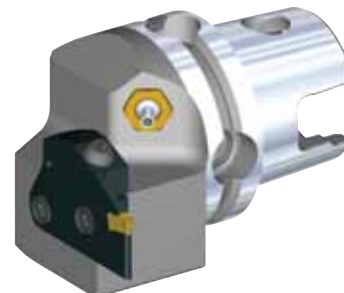
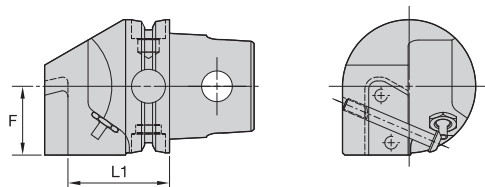


■ LSS 90°



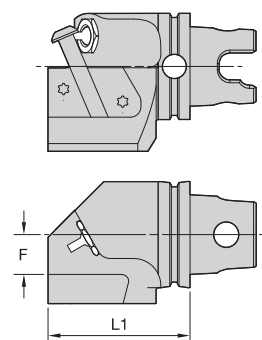
order number	catalog number	L1		F		gage insert	insert screw	shim	shim screw	clamp assembly	kg	lbs
		mm	in	mm	in							
right hand												
3950857	KM40TSLSSR16	40	1.575	27	1.063	LT16ER	SSA3T	SMYE3	SSY3T	CKC3	0,31	.68
3950858	KM40TSLSSR22	40	1.575	27	1.063	LT22ER	SSA4T	SMYE4	SSY4T	CKC4	0,30	.66
3959401	KM40TSLSSR27	45	1.772	27	1.063	LT27ER	SSA5T	SMYE5	SSY5T	CKC5	0,37	.82
left hand												
3950855	KM40TSLSSL16	40	1.575	27	1.063	LT16EL	SSA3T	SMYI3	SSY3T	CKC3	0,32	.70
3950856	KM40TSLSSL22	40	1.575	27	1.063	LT22EL	SSA4T	SMYI4	SSY4T	CKC4	0,31	.68
3959400	KM40TSLSSL27	45	1.772	27	1.063	LT27EL	SSA5T	SMYI5	SSY5T	CKC5	0,37	.82

NOTE: Cutting units are supplied with insert screw and clamp assembly. However, tools are designed to use either the insert screw or the clamp assembly, not both.


■ KGME • End Mount

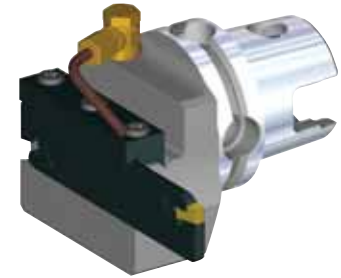
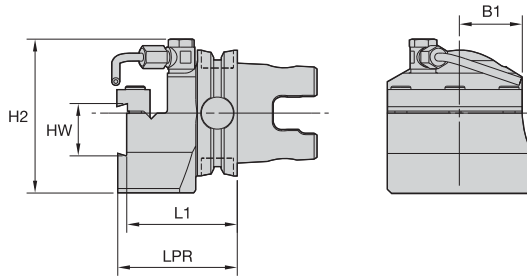
order number	catalog number	L1		F		cartridge size	blade screw	clamp screw	nozzle	kg
		mm	in	mm	in					
3950266	right hand	28	1.102	20,5	.807	50	MS1162	MS2002	PMT08430	0,40
	KM40TSKGMER50									
3950265	left hand	28	1.102	20,5	.807	50	MS1162	MS2002	PMT08430	0,40
	KM40TSKGMEL50									

NOTE: Right-hand cutting units use left-hand blades.
 For A3/A4 modular blades, see the Kennametal Innovations Master Catalog Cutting Tools 2013.


■ KGMS • Side Mount

order number	catalog number	L1		F		cartridge size	blade screw	clamp screw	nozzle	kg
		mm	in	mm	in					
3950268	right hand	53,5	2.106	15	.591	50	MS1162	MS2002	PMT08430	0,54
	KM40TSKGMRS50									
3950267	left hand	53,5	2.106	15	.591	50	MS1162	MS2002	PMT08430	0,54
	KM40TSKGMSL50									

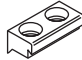


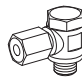
NOTE: Right-hand cutting units use right-hand blades.
 For A3/A4 modular blades, see the Kennametal Innovations Master Catalog Cutting Tools 2013.



■ BE • End Mount

order number	catalog number	L1		LPR		H2		HW		B1		cartridge size	cartridge 1	kg
		mm	in	mm	in	mm	in	mm	in	mm	in			
3950835	right hand	50,30	1.98	54,80	2.16	56,50	2.22	26	1.02	25	.98	26	A2BN..26...	1,07
	KM40TSBER													
3950834	left hand	50,30	1.98	54,80	2.16	56,50	2.22	26	1.02	25	.98	26	A2BN..26...	1,07
	KM40TSBEL													

■ BE • Spare Parts

catalog number				
	clamp	clamp screw	coolant tube	coolant swivel base
right hand KM40TSBER	CGS4	MS1595	12649910900	12649910800
left hand KM40TSBEL	CGS4	MS1595	12649910900	12649910800

NOTE: Blades must be ordered separately; see the Kennametal Innovations Master Catalog Cutting Tools 2013.

KENNAMETAL REPAIR SERVICES

Getting Started, and Getting Finished, Is Easy.

Follow these 4 simple steps and be on your way to restored tools and great savings.

- 1 Visit www.kennametal.com to find the tool you're looking to have repaired.
- 2 Download and complete the form. Mail the completed form and the tooling to the Kennametal Service and Repair Department.
- 3 Kennametal will quickly respond to your request with a cost estimate and timetable for the completion of the repair.
- 4 Within 60 days of receiving the estimate, notify Kennametal whether you'd like the tooling repaired, returned, or scrapped.

**Please note that the tap adapters are not cost effective to repair.*

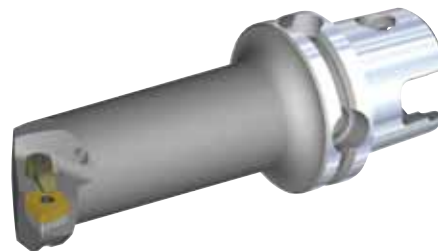
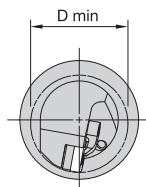
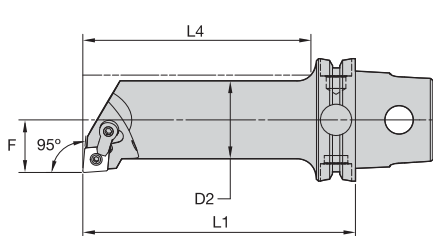


Repair Services

Tools are valuable. Protect them and get the most from your investment.

You can be assured that when your advanced tooling products need to be serviced, the Kennametal Service and Repair Department has the highly trained, experienced staff to provide expert assistance. For about half the cost of a new tool purchase, you can have your existing, damaged tools serviced and repaired to like-new condition.





■ MCLN 95°

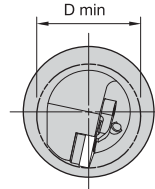
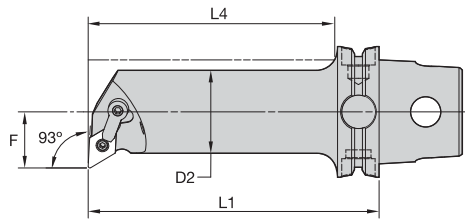
order number	catalog number	D2		D min		F		L4		L1		gage insert	kg	lbs
		mm	in	mm	in	mm	in	mm	in	mm	in			
right hand														
3955549	KM40TSS25EMCLNR12	25	.98	32	1.26	17	.669	55	2.17	70	2.756	CN..120408/CN..432	0,35	.76
3955551	KM40TSS25HMCLNR12	25	.98	32	1.26	17	.669	75	2.95	100	3.937	CN..120408/CN..432	0,50	1.10
3955553	KM40TSS32GMCLNR12	32	1.26	40	1.57	22	.866	76	2.99	90	3.543	CN..120408/CN..432	0,59	1.29
3955555	KM40TSS32JMCLNR12	32	1.26	40	1.57	22	.866	96	3.78	110	4.331	CN..120408/CN..432	0,71	1.56
left hand														
3955548	KM40TSS25EMCLNL12	25	.98	32	1.26	17	.669	55	2.17	70	2.756	CN..120408/CN..432	0,35	.76
3955550	KM40TSS25HMCLNL12	25	.98	32	1.26	17	.669	75	2.95	100	3.937	CN..120408/CN..432	0,50	1.10
3955552	KM40TSS32GMCLNL12	32	1.26	40	1.57	22	.866	76	2.99	90	3.543	CN..120408/CN..432	0,59	1.29
3955554	KM40TSS32JMCLNL12	32	1.26	40	1.57	22	.866	96	3.78	110	4.331	CN..120408/CN..432	0,71	1.56

■ Spare Parts

catalog number	shim	lock pin	clamp	clamp screw
right hand				
KM40TSS25EMCLNR12	—	KLM43	CKM20LP	STCM11
KM40TSS25HMCLNR12	—	KLM43	CKM20LP	STCM11
KM40TSS32GMCLNR12	ICSN432	KLM46	CKM20LP	STCM11
KM40TSS32JMCLNR12	ICSN432	KLM46	CKM20LP	STCM11
left hand				
KM40TSS25EMCLNL12	—	KLM43	CKM20LP	STCM11
KM40TSS25HMCLNL12	—	KLM43	CKM20LP	STCM11
KM40TSS32GMCLNL12	ICSN432	KLM46	CKM20LP	STCM11
KM40TSS32JMCLNL12	ICSN432	KLM46	CKM20LP	STCM11



KM40TS Internal Cutting Units

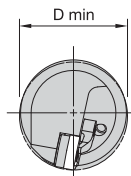
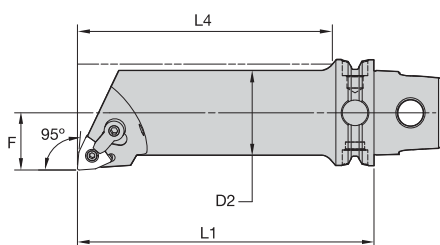


■ MDUN 93°

order number	catalog number	D2		D min		F		L4		L1		gage insert	kg	lbs
		mm	in	mm	in	mm	in	mm	in	mm	in			
right hand														
3959375	KM40TSS25EMDUNR15	25	.98	32	1.26	17	.669	55	2.17	70	2.756	DN..150408/DN..432	0,33	.74
3959377	KM40TSS25HMDUNR15	25	.98	32	1.26	17	.669	75	2.95	100	3.937	DN..150408/DN..432	0,49	1.07
3959379	KM40TSS32GMDUNR15	32	1.26	40	1.57	22	.866	76	2.99	90	3.543	DN..150408/DN..432	0,57	1.26
3959381	KM40TSS32JMDUNR15	32	1.26	40	1.57	22	.866	96	3.78	110	4.331	DN..150408/DN..432	0,69	1.53
left hand														
3959374	KM40TSS25EMDUNL15	25	.98	32	1.26	17	.669	55	2.17	70	2.756	DN..150408/DN..432	0,33	.74
3959376	KM40TSS25HMDUNL15	25	.98	32	1.26	17	.669	75	2.95	100	3.937	DN..150408/DN..432	0,49	1.08
3959378	KM40TSS32GMDUNL15	32	1.26	40	1.57	22	.866	76	2.99	90	3.543	DN..150408/DN..432	0,57	1.26
3959380	KM40TSS32JMDUNL15	32	1.26	40	1.57	22	.866	96	3.78	110	4.331	DN..150408/DN..432	0,69	1.53

■ Spare Parts

catalog number	shim	lock pin	clamp	clamp screw
right hand				
KM40TSS25EMDUNR15	—	KLM43	CKM20LP	STCM11
KM40TSS25HMDUNR15	—	KLM43	CKM20LP	STCM11
KM40TSS32GMDUNR15	IDSN432	KLM46	CKM23LP	STCM11
KM40TSS32JMDUNR15	IDSN432	KLM46	CKM23LP	STCM11
left hand				
KM40TSS25EMDUNL15	—	KLM43	CKM20LP	STCM11
KM40TSS25HMDUNL15	—	KLM43	CKM20LP	STCM11
KM40TSS32GMDUNL15	IDSN432	KLM46	CKM23LP	STCM11
KM40TSS32JMDUNL15	IDSN432	KLM46	CKM23LP	STCM11



■ MWLN 95°

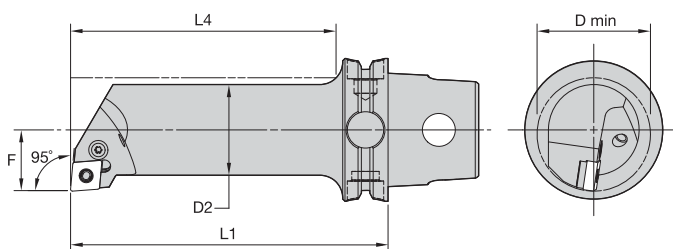
order number	catalog number	D2		D min		F		L4		L1		gage insert	kg	lbs
		mm	in	mm	in	mm	in	mm	in	mm	in			
	right hand													
3959331	KM40TSS25HMWLNRO8	25	.98	32	1.26	17	.669	75	2.95	100	3.937	WN..080408/WN..432	0,50	1.10
3959373	KM40TSS32JMWLNRO8	32	1.26	40	1.57	22	.866	96	3.78	110	4.331	WN..080408/WN..432	0,69	1.53
	left hand													
3959330	KM40TSS25HMWLNLO8	25	.98	32	1.26	17	.669	75	2.95	100	3.937	WN..080408/WN..432	0,50	1.10
3959332	KM40TSS32JMWLNLO8	32	1.26	40	1.57	22	.866	96	3.78	110	4.331	WN..080408/WN..432	0,69	1.53

■ Spare Parts

catalog number				
	shim	lock pin	clamp	clamp screw
right hand				
KM40TSS25HMWLNRO8	—	KLM43	CKM20LP	STCM11
KM40TSS32JMWLNRO8	IWSN433	KLM46	CKM20LP	STCM11
left hand				
KM40TSS25HMWLNLO8	—	KLM43	CKM20LP	STCM11
KM40TSS32JMWLNLO8	IWSN433	KLM46	CKM20LP	STCM11



KM40TS Internal Cutting Units

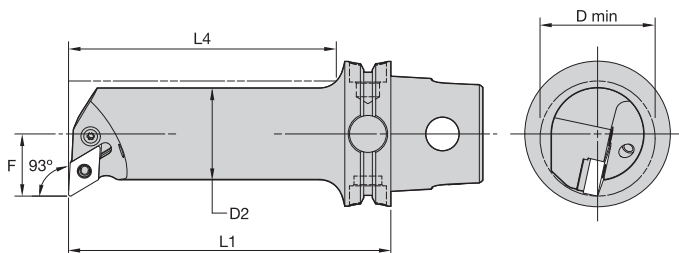


■ PCLN 95°

order number	catalog number	D2		D min		F		L4		L1		gage insert	kg	lbs
		mm	in	mm	in	mm	in	mm	in	mm	in			
right hand														
3959339	KM40TSS25HPCLNR12	25	.98	32	1.26	17	.669	75	2.95	100	3.937	CN..120408/CN..432	0,49	1.09
3959337	KM40TSS25GPCLNR12	25	.98	32	1.26	17	.669	77	3.04	90	3.543	CN..120408/CN..432	0,41	.90
3959341	KM40TSS32GPCLNR12	32	1.26	40	1.57	22	.866	76	2.99	90	3.543	CN..120408/CN..432	0,59	1.29
left hand														
3959338	KM40TSS25HPCLNL12	25	.98	32	1.26	17	.669	75	2.95	100	3.937	CN..120408/CN..432	0,49	1.09
3959336	KM40TSS25GPCLNL12	25	.98	32	1.26	17	.669	77	3.04	90	3.543	CN..120408/CN..432	0,41	.90
3959340	KM40TSS32GPCLNL12	32	1.26	40	1.57	22	.866	76	2.99	90	3.543	CN..120408/CN..432	0,59	1.29

■ Spare Parts

catalog number					
	shim	lever screw	shim pin	toggle lever	punch
right hand					
KM40TSS25GPCLNR12	—	514.122	—	511.022	—
KM40TSS25HPCLNR12	—	514.122	—	511.022	—
KM40TSS32GPCLNR12	512.112	514.123	513.023	511.023	515.018
left hand					
KM40TSS25GPCLNL12	—	514.122	—	511.022	—
KM40TSS25HPCLNL12	—	514.122	—	511.022	—
KM40TSS32GPCLNL12	512.112	514.123	513.023	511.023	515.018



■ PDUN 93°

order number	catalog number	D2		D min		F		L4		L1		gage insert	kg	lbs
		mm	in	mm	in	mm	in	mm	in	mm	in			
	right hand													
3959343	KM40TSS25GPDUNR11	25	.98	32	1.26	17	.669	77	3.04	90	3.543	DN..110408/DN..332	0,41	.900
	left hand													
3959342	KM40TSS25GPDUNL11	25	.98	32	1.26	17	.669	77	3.04	90	3.543	DN..110408/DN..332	0,41	.900

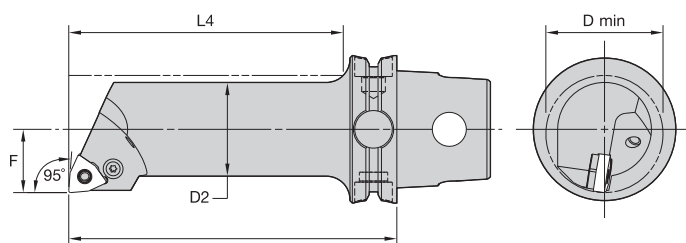
■ Spare Parts



catalog number	lever screw	toggle lever
right hand KM40TSS25GPDUNR11	514.112	511.015
left hand KM40TSS25GPDUNL11	514.112	511.015



KM40TS Internal Cutting Units



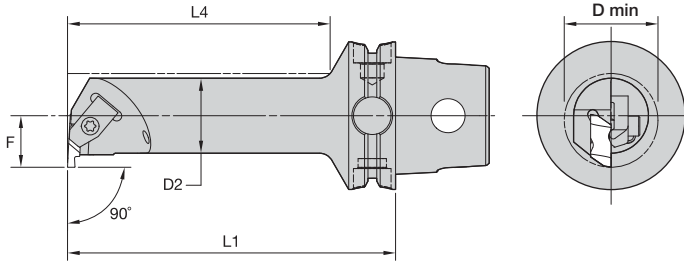
■ PWLN 95°

order number	catalog number	D2		D min		F		L4		L1		gage insert	kg	lbs
		mm	in	mm	in	mm	in	mm	in	mm	in			
right hand														
3959345	KM40TSS25EPWLN08	25	.98	32	1.26	17	.669	55	2.17	70	2.756	WN..080408/WN..432	0,34	.75
3959351	KM40TSS25HPWLN08	25	.98	32	1.26	17	.669	75	2.95	100	3.937	WN..080408/WN..432	0,49	1.08
3959347	KM40TSS25GPWLN06	25	.98	32	1.26	17	.669	77	3.04	90	3.543	WN..060408/WN..332	0,41	.90
3959349	KM40TSS25GPWLN08	25	.98	32	1.26	17	.669	77	3.04	90	3.543	WN..080408/WN..432	0,40	.89
left hand														
3959344	KM40TSS25EPWLN08	25	.98	32	1.26	17	.669	55	2.17	70	2.756	WN..080408/WN..432	0,34	.75
3959350	KM40TSS25HPWLN08	25	.98	32	1.26	17	.669	75	2.95	100	3.937	WN..080408/WN..432	0,49	1.08
3959346	KM40TSS25GPWLN06	25	.98	32	1.26	17	.669	77	3.04	90	3.543	WN..060408/WN..332	0,41	.90
3959348	KM40TSS25GPWLN08	25	.98	32	1.26	17	.669	77	3.04	90	3.543	WN..080408/WN..432	0,40	.89

■ Spare Parts



catalog number	lever screw	toggle lever
right hand		
KM40TSS25EPWLN08	514.122	511.022
KM40TSS25GPWLN06	514.112	511.030
KM40TSS25GPWLN08	514.122	511.022
KM40TSS25HPWLN08	514.122	511.022
left hand		
KM40TSS25EPWLN08	514.122	511.022
KM40TSS25GPWLN06	514.112	511.030
KM40TSS25GPWLN08	514.122	511.022
KM40TSS25HPWLN08	514.122	511.022





■ NE 90° • Steel

order number	catalog number	D2		D min		F		L4		L1		gage insert	kg	lbs
		mm	in	mm	in	mm	in	mm	in	mm	in			
right hand														
3955481	KM40TSS12ENER2	12	.47	19	.73	11	.433	42	1.655	70	2.756	NG2L	0,27	.58
3955483	KM40TSS16FNER2	16	.63	20	.79	11	.433	56	2.209	80	3.150	NG2L	0,28	.62
3955485	KM40TSS20GNER2	20	.79	25	.98	13	.512	70	2.757	90	3.543	NG2L	0,35	.76
3955487	KM40TSS25ENER2	25	.98	32	1.26	17	.669	55	2.169	70	2.756	NG2L	0,34	.75
3955491	KM40TSS25ENER3	25	.98	34	1.34	17	.669	55	2.169	70	2.756	NG3L	0,35	.77
3955489	KM40TSS25HNER2	25	.98	32	1.26	17	.669	75	2.954	100	3.937	NG2L	0,49	1.08
3955493	KM40TSS25HNER3	25	.98	34	1.34	17	.669	75	2.954	100	3.937	NG3L	0,49	1.09
3955497	KM40TSS32GNER3	32	1.26	40	1.57	22	.866	76	2.993	90	3.543	NG3L	0,55	1.21
3955495	KM40TSS32JNER3	32	1.26	40	1.57	22	.866	96	3.780	110	4.331	NG3L	0,67	1.48
left hand														
3955480	KM40TSS12ENEL2	12	.47	19	.73	11	.433	42	1.655	70	2.756	NG2R	0,27	.59
3955482	KM40TSS16FNEL2	16	.63	20	.79	11	.433	56	2.209	80	3.150	NG2R	0,28	.62
3955484	KM40TSS20GNEL2	20	.79	25	.98	13	.512	70	2.757	90	3.543	NG2R	0,35	.76
3955486	KM40TSS25ENEL2	25	.98	32	1.26	17	.669	55	2.169	70	2.756	NG2R	0,34	.75
3955490	KM40TSS25ENEL3	25	.98	34	1.34	17	.669	55	2.169	70	2.756	NG3R	0,35	.77
3955492	KM40TSS25HNEL3	25	.98	34	1.34	17	.669	75	2.954	100	3.937	NG3R	0,49	1.09
3955488	KM40TSS25HNEL2	25	.98	32	1.26	17	.669	75	2.954	100	3.937	NG2R	0,49	1.08
3955496	KM40TSS32GNEL3	32	1.26	40	1.57	22	.866	76	2.993	90	3.543	NG3R	0,55	1.21
3955494	KM40TSS32JNEL3	32	1.26	40	1.57	22	.866	96	3.780	110	4.331	NG3R	0,67	1.48

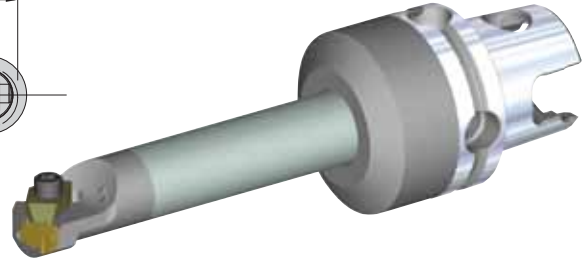
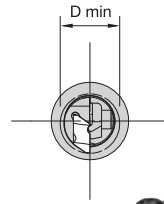
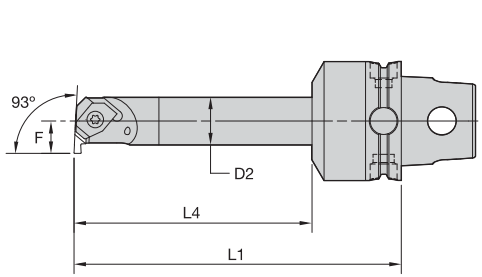
(continued)

(NE 90° • Steel continued)

■ Spare Parts

catalog number	 clamp	 clamp screw
right hand		
KM40TSS12ENER2	CM147	MS1488
KM40TSS16FNER2	CM147	MS1488
KM40TSS20GNER2	CM75	MS1488
KM40TSS25ENER2	CM75	MS1488
KM40TSS25ENER3	CM73	MS1489
KM40TSS25HNER2	CM75	MS1488
KM40TSS25HNER3	CM73	MS1489
KM40TSS32GNER3	CM73	MS1489
KM40TSS32JNER3	CM73	MS1489
left hand		
KM40TSS12ENEL2	CM146	MS1488
KM40TSS16FNEL2	CM146	MS1488
KM40TSS20GNEL2	CM74	MS1488
KM40TSS25ENEL2	CM74	MS1488
KM40TSS25ENEL3	CM72	MS1489
KM40TSS25HNEL2	CM74	MS1488
KM40TSS25HNEL3	CM72	MS1489
KM40TSS32GNEL3	CM72	MS1489
KM40TSS32JNEL3	CM72	MS1489

KM40TS Internal Cutting Units



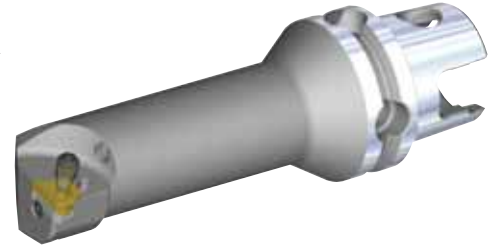
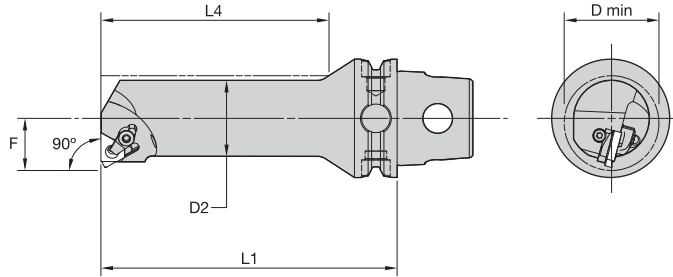
■ NE 93° • Carbide

order number	catalog number	D2		D min		F		L4		L1		gage insert	kg	lbs
		mm	in	mm	in	mm	in	mm	in	mm	in			
	right hand													
3951836	KM40TSE16JNER2	16	.63	20	.79	11	.433	80	3.15	110	4.331	NG2L	0,41	.90
	left hand													
3951835	KM40TSE16JNEL2	16	.63	20	.79	11	.433	80	3.15	110	4.331	NG2R	0,41	.90

■ Spare Parts

catalog number	clamp	clamp screw
right hand KM40TSE16JNER2	CM146	MS1488
left hand KM40TSE16JNEL2	CM147	MS1488





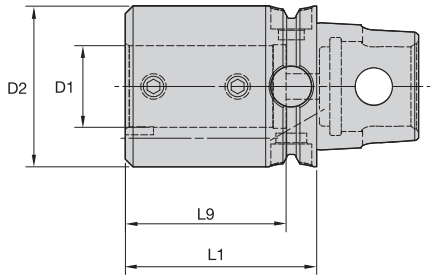
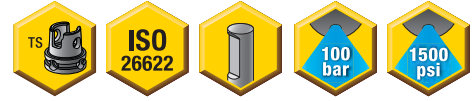
■ LSE 90°

order number	catalog number	D2		D min		F		L4		L1		gage insert	kg	lbs
		mm	in	mm	in	mm	in	mm	in	mm	in			
right hand														
3955464	KM40TSS10DLSER11	10	.39	13	.51	7	.276	35	1.38	60	2.362	LT11NR	0,22	.49
3955466	KM40TSS12ELSER11	12	.47	16	.63	9	.354	42	1.66	70	2.756	LT11NR	0,25	.56
3955468	KM40TSS16FLSER16	16	.63	20	.79	11	.433	56	2.21	80	3.150	LT16NR	0,28	.61
3955470	KM40TSS20GLSER16	20	.79	25	.98	13	.512	70	2.76	90	3.543	LT16NR	0,34	.75
3955472	KM40TSS25HLSER16	25	.98	32	1.26	17	.669	75	2.95	100	3.937	LT16NR	0,50	1.11
3955474	KM40TSS32JLSER16	32	1.26	40	1.57	22	.866	96	3.78	110	4.331	LT16NR	0,72	1.58
3955476	KM40TSS32JLSER22	32	1.26	40	1.57	22	.866	96	3.78	110	4.331	LT22NR	0,71	1.56
left hand														
3955463	KM40TSS10DLSEL11	10	.39	13	.51	7	.276	35	1.38	60	2.362	LT11NL	0,22	.49
3955465	KM40TSS12ELSEL11	12	.47	16	.63	9	.354	42	1.65	70	2.756	LT11NL	0,25	.55
3955467	KM40TSS16FLSEL16	16	.63	20	.79	11	.433	56	2.21	80	3.150	LT16NL	0,28	.61
3955469	KM40TSS20GLSEL16	20	.79	25	.98	13	.512	70	2.76	90	3.543	LT16NL	0,34	.75
3955471	KM40TSS25HLSSEL16	25	.98	32	1.26	17	.669	75	2.95	100	3.937	LT16NL	0,50	1.11
3955473	KM40TSS32JLSEL16	32	1.26	40	1.57	22	.866	96	3.78	110	4.331	LT16NL	0,72	1.58
3955475	KM40TSS32JLSEL22	32	1.26	40	1.57	22	.866	96	3.78	110	4.331	LT22NL	0,71	1.56

■ Spare Parts

catalog number	insert screw	shim	shim screw	clamp assembly
right hand				
KM40TSS10DLSER11	SSN2T	—	—	—
KM40TSS12ELSER11	SSN2T	—	—	—
KM40TSS16FLSER16	SN3TPKG	—	—	—
KM40TSS20GLSER16	SSA3T	SMYI3	SSY3T	CKC3
KM40TSS25HLSER16	SSA3T	SMYI3	SSY3T	CKC3
KM40TSS32JLSER16	SSA3T	SMYI3	SSY3T	CKC3
KM40TSS32JLSER22	SSA4T	SMYI4	SSY4T	CKC4
left hand				
KM40TSS10DLSEL11	SSN2T	—	—	—
KM40TSS12ELSEL11	SSN2T	—	—	—
KM40TSS16FLSEL16	SN3TPKG	—	—	—
KM40TSS20GLSEL16	SSA3T	SMYE3	SSY3T	CKC3
KM40TSS25HLSSEL16	SSA3T	SMYE3	SSY3T	CKC3
KM40TSS32JLSEL16	SSA3T	SMYE3	SSY3T	CKC3
KM40TSS32JLSEL22	SSA4T	SMYE4	SSY4T	CKC4

NOTE: Items listed without a shim are designed for a 1.5° inclination angle.
Cutting units are supplied with insert screw and clamp assembly. However, tools are designed to use either the insert screw or the clamp assembly, not both.



■ BA • Boring Bar Adapter • Internal and External Coolant • Metric



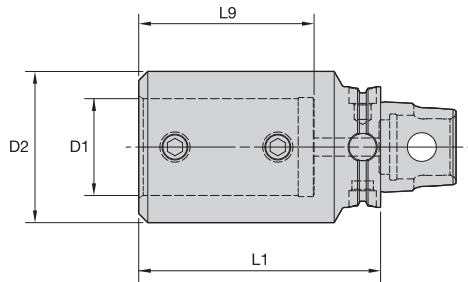
order number	catalog number	D1	D2	L1	L9	clamp screw	wrench size clamp screw	Nm	kg
3950818	KM40TSBA06050M	6	40	50	36	MS1210	2,5mm	3	0,50
3950819	KM40TSBA08050M	8	40	50	36	MS1210	2,5mm	3	0,50
3950820	KM40TSBA10060M	10	40	60	48	MS1211	4mm	12	0,58
3950821	KM40TSBA12065M	12	40	65	52	MS1211	4mm	12	0,61
3950822	KM40TSBA16070M	16	40	70	55	MS1081	5mm	25	0,61
3950823	KM40TSBA20075M	20	40	75	58	MS1213	5mm	25	0,60
3950824	KM40TSBA25075M	25	50	75	56	MS1081	5mm	25	0,87

■ BA • Boring Bar Adapter • Internal and External Coolant • Inch



order number	catalog number	D1	D2	L1	L9	clamp screw	wrench size clamp screw	ft. lbs.	lbs
3950813	KM40TSBA06236	3/8	1.58	2.362	1.89	S843	1/8	5	1.27
3950814	KM40TSBA08256	1/2	1.58	2.559	2.05	S852	5/32	10	1.33
3950815	KM40TSBA10276	5/8	1.58	2.756	2.17	S862	3/16	15	1.35
3950816	KM40TSBA12295	3/4	1.58	2.953	2.28	S862	3/16	15	1.37
3950817	KM40TSBA16295	1	1.97	2.953	2.21	S862	3/16	15	1.90

NOTE: Do not overtighten clamp screw; use torque recommendations above.
Supplied with clamp screw.
Clamp screw wrench not included.



■ BAI • Boring Bar Adapter • Internal Coolant Only • Metric



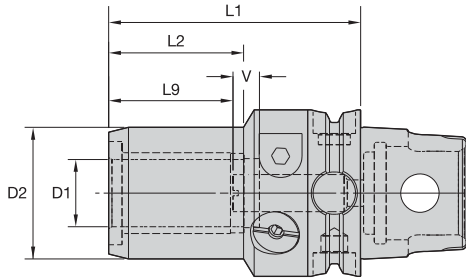
order number	catalog number	D1	D2	L1	L9	clamp screw	wrench size clamp screw	Nm	kg
3950158	KM40TSBAI32080M	32	50	80	58	MS1213	5mm	25	0,81
3950159	KM40TSBAI40090M	40	58	90	68	MS1213	5mm	25	1,04

■ BAI • Boring Bar Adapter • Internal Coolant Only • Inch



order number	catalog number	D1	D2	L1	L9	clamp screw	wrench size clamp screw	ft. lbs.	lbs
3950156	KM40TSBAI20315	1 1/4	1.97	3.150	2.28	S861	3/16	15	1.78
3950157	KM40TSBAI24354	1 1/2	2.28	3.543	2.68	S861	3/16	15	2.43

NOTE: Do not overtighten clamp screw; use torque recommendations above.
Supplied with clamp screw.
Clamp screw wrench not included.



■ HC • Metric



order number	catalog number	D1	D2	L1	L2	L9	V	actuation wrench	wrench size actuation screw	length adjustment wrench	wrench size stop screw	kg
3960498	KM40TSHC06065M	6	26	65	34	27	10	170.135	5mm	170.002	2,5mm	0,43
3960499	KM40TSHC08065M	8	28	65	34	27	10	170.135	5mm	170.002	2,5mm	0,44
3960500	KM40TSHC10070M	10	30	70	38	31	10	170.135	5mm	170.002	2,5mm	0,49
3960501	KM40TSHC12075M	12	32	75	41	36	10	170.135	5mm	170.002	2,5mm	0,53

■ HC • Inch



order number	catalog number	D1	D2	L1	L2	L9	V	actuation wrench	wrench size actuation screw	length adjustment wrench	wrench size stop screw	lbs
3960497	KM40TSHC050300	1/2	1.24	3.000	1.75	1.42	.39	170.135	5mm	170.002	2,5mm	1.16

NOTE: Do not overtorque clamp screw. Tighten by hand until stop is felt.
Hydraulic chuck technical section, see page M84.
Reduction sleeves are available and must be ordered separately; see page J2.
Wrenches must be ordered separately.