



# KM Micro<sup>TM</sup> and KM Mini<sup>TM</sup>

**The most economical modular quick-change tooling system available.**

The KM Micro and KM Mini couplings offer a very rigid joint with a high degree of repeatability while maintaining a very compact envelope. This permits a high degree of versatility without sacrificing cutting performance.

- Reduce downtime, increase productivity.
- Replaces conventional square-shank tooling.
- No machine modifications required.
- KM Mini is ideal for machines up to 30 hp (22kW).

Experience the advantages at your Authorized Kennametal Distributor or at [www.kennametal.com](http://www.kennametal.com).

[www.kennametal.com](http://www.kennametal.com)



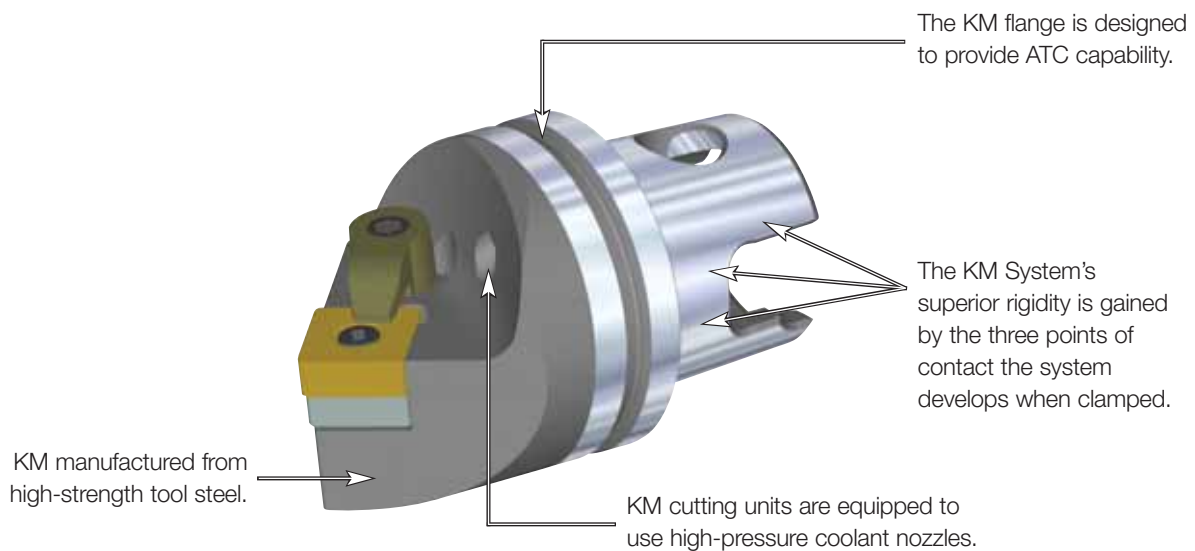
# KM™ Quick Change Clamping System • KM32TS™ Series

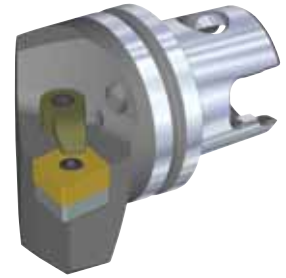
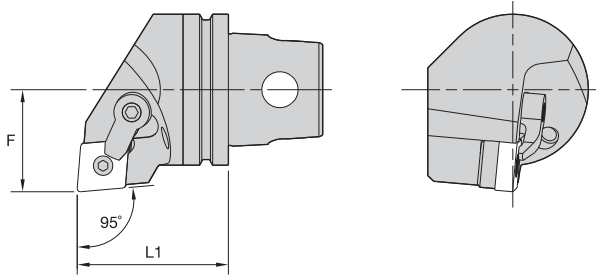
## Primary Application

The KM Quick Change Clamping System is the best system on the market suitable for static, rotating, and multitasking operations. With its industry-leading design, the KM Quick Change System provides greater clamping forces than other quick-change systems. The KM Quick Change System gives you the flexibility to use KM on any application within your shop.

## Features and Benefits

- KM is an ISO standard (ISO 26622).
- KM clamping units provide a 4:1 mechanical advantage.
- KM cutting units are capable of 100 bar (1,500 psi) coolant pressure.

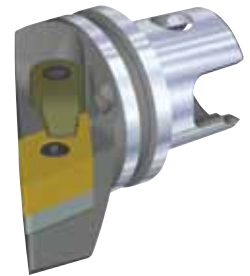
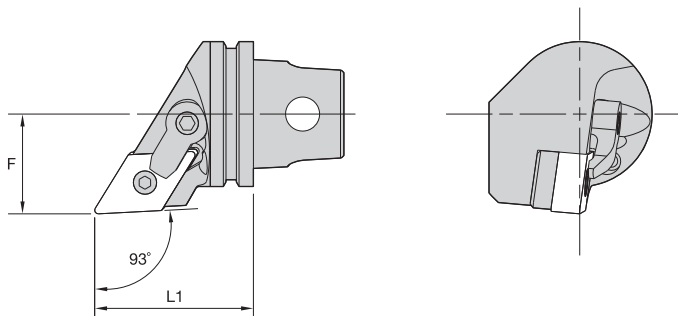




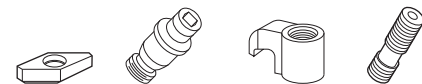
■ MCLN 95°



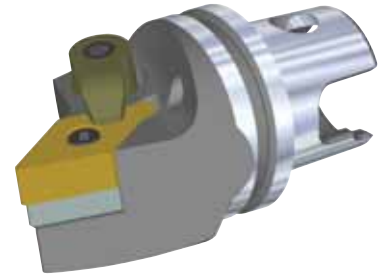
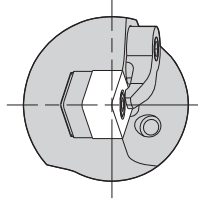
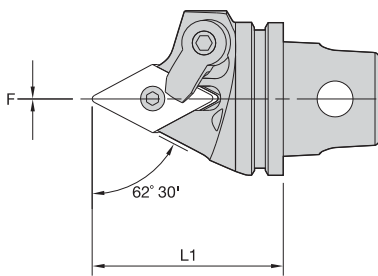
order number	catalog number	L1		F		gage insert	shim	lock pin	clamp	clamp screw
		mm	in	mm	in					
1023224	<b>right hand</b> KM32TSMCLNR12	35	1.378	22	.866	CN..120408/CN..432	ICSN432	KLM46	CKM20LP	STCM11
1023228	<b>left hand</b> KM32TSMCLNL12	35	1.378	22	.866	CN..120408/CN..432	ICSN432	KLM46	CKM20LP	STCM11



■ MDJN 93°



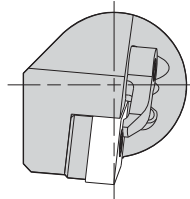
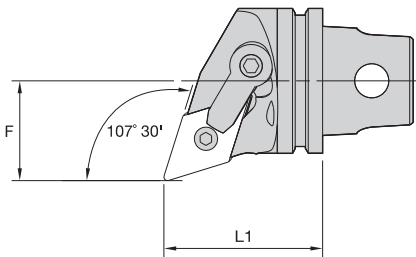
order number	catalog number	L1		F		gage insert	shim	lock pin	clamp	clamp screw
		mm	in	mm	in					
3095644	<b>right hand</b> KM32TSMDJNR1504	35	1.378	22	.866	DN..150408/DN..432	IDSN442	KLM46L	CKM20LP	STCM11
1023232	<b>right hand</b> KM32TSMDJNR1506	35	1.378	22	.866	DN..150608/DN..442	IDSN432	KLM46L	CKM20LP	STCM11
3095643	<b>left hand</b> KM32TSMDJNLR1504	35	1.378	22	.866	DN..150408/DN..432	IDSN442	KLM46L	CKM20LP	STCM11
1023275	<b>left hand</b> KM32TSMDJNLR1506	35	1.378	22	.866	DN..150608/DN..442	IDSN432	KLM46L	CKM20LP	STCM11



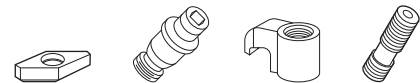
■ MDPN 62° 30'



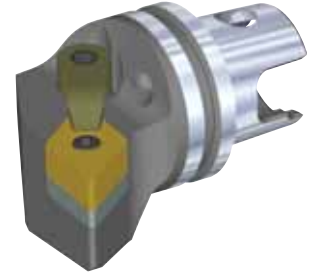
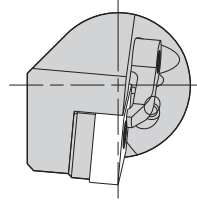
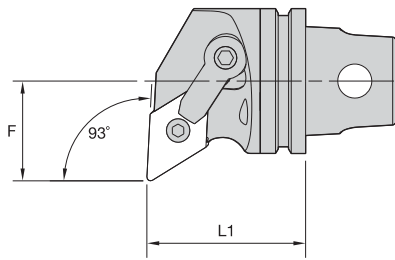
order number	catalog number	L1		F		gage insert	shim	lock pin	clamp	clamp screw
		mm	in	mm	in					
3095645	KM32TSDPNN1504	40	1.575	0	.000	DN..150408/DN..432	IDSN442	KLM46L	CKM20LP	STCM11
1022560	KM32TSDPNN1506	40	1.575	0	.000	DN..150608/DN..442	IDSN432	KLC46L	CKM20LP	STCC11



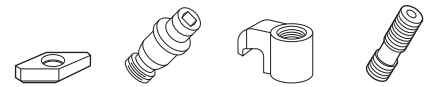
■ MDQN 107° 30'



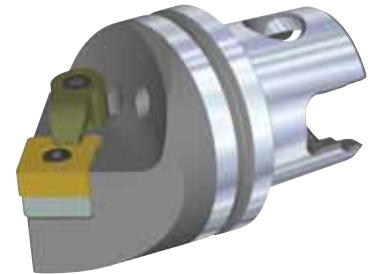
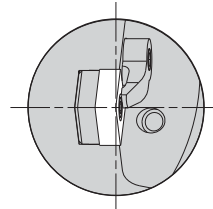
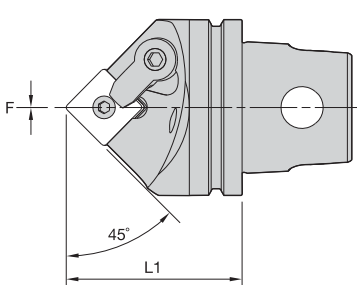
order number	catalog number	L1		F		gage insert	shim	lock pin	clamp	clamp screw
		mm	in	mm	in					
1023233	KM32TSMQNR1506	35	1.378	22	.866	DN..150608/DN..442	IDSN432	KLM46L	CKM23LP	STCM11
1023276	KM32TSMQNL1506	35	1.378	22	.866	DN..150608/DN..442	IDSN432	KLM46L	CKM23LP	STCM11



■ MDUN 93°



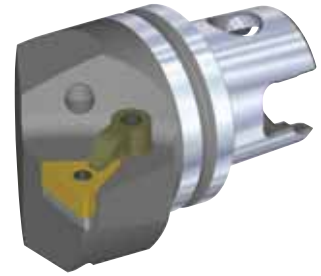
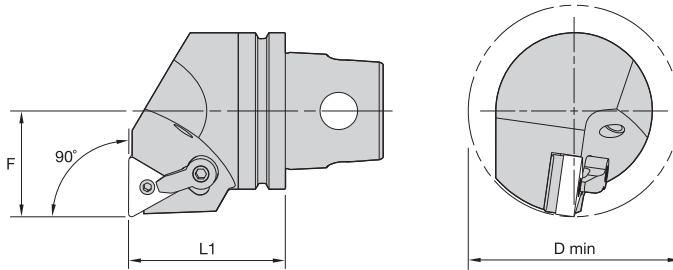
order number	catalog number	L1		F		gage insert	shim	lock pin	clamp	clamp screw
		mm	in	mm	in					
1023274	right hand	35	1.378	22	.866	DN..150608/DN..442	IDSN432	KLM46L	CKM23LP	STCM11
	left hand									
1023277	KM32TSM DUNL1506	35	1.378	22	.866	DN..150608/DN..442	IDSN432	KLM46L	CKM23LP	STCM11



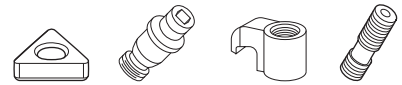
■ MSDN 45°



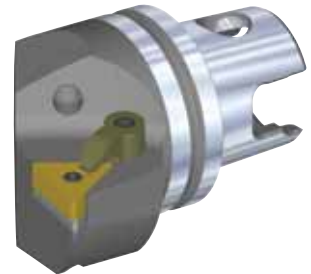
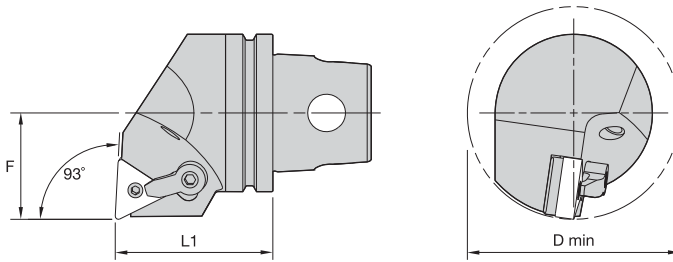
order number	catalog number	L1		F		gage insert	shim	lock pin	clamp	clamp screw
		mm	in	mm	in					
1144875	KM32TSM DNN12	40	1.575	0	.000	SN..120408/SN..432	ISSN432	KLM46	CKM20LP	STCM11



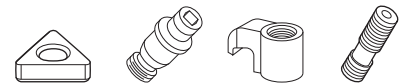
■ MTFN 90°



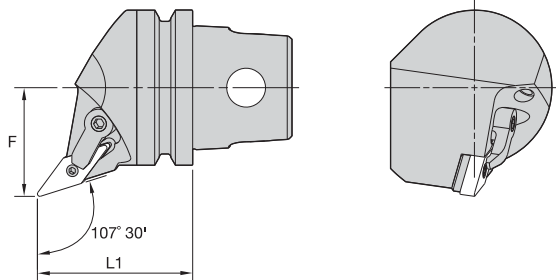
order number	catalog number	L1		F		D min		gage insert	shim	lock pin	clamp	clamp screw
		mm	in	mm	in	mm	in					
1023281	KM32TSMTFNL16	35	1.378	22	.866	44	1.732	TN..160408/TN..332	ITSN322	KLM34L	CKM7LP	STCM9



■ MTUN 93°

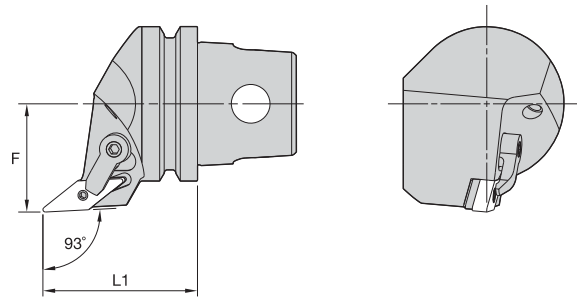
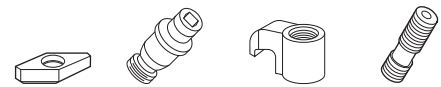


order number	catalog number	L1		F		D min		gage insert	shim	lock pin	clamp	clamp screw
		mm	in	mm	in	mm	in					
1144903	KM32TSMTUNR16	35	1.378	22	.866	44	1.732	TN..160408/TN..332	ITSN322	KLM34L	CKM7LP	STCM9



■ MVHN 107° 30'

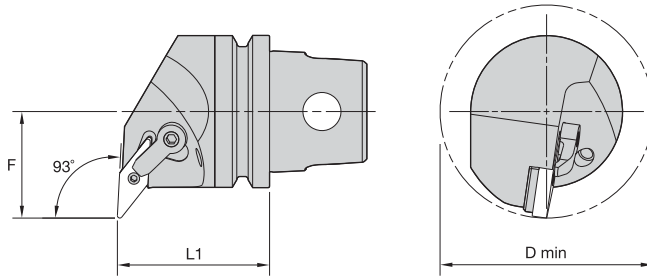
order number	catalog number	L1		F		gage insert	shim	lock pin	clamp	clamp screw
		mm	in	mm	in					
1144909	KM32TSMVHNR16	35	1.378	22	.866	VN..160408/VN..332	IVSN322	KLM34L	CKM23LP	STCM11
1144910	KM32TSMVHNL16	35	1.378	22	.866	VN..160408/VN..332	IVSN322	KLM34L	CKM23LP	STCM11



■ MVJN 93°

order number	catalog number	L1		F		gage insert	shim	lock pin	clamp	clamp screw
		mm	in	mm	in					
1023280	KM32TSMVJNR16	40	1.575	22	.866	VN..160408/VN..332	IVSN322	KLM34L	CKM23LP	STCM11
1023283	KM32TSMVJNL16	40	1.575	22	.866	VN..160408/VN..332	IVSN322	KLM34L	CKM23LP	STCM11

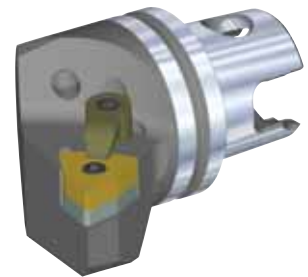
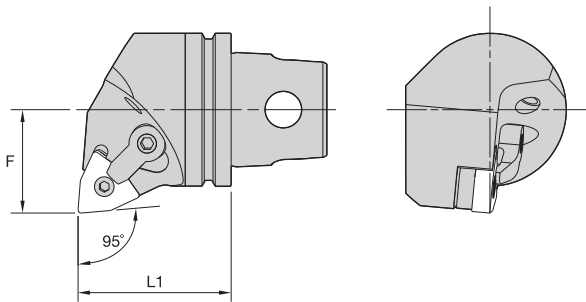




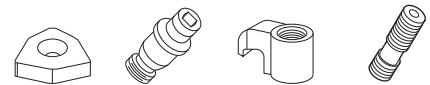
■ MVUN 93°



order number	catalog number	L1		F		D min		gage insert	shim	lock pin	clamp	clamp screw
		mm	in	mm	in	mm	in					
1144911	KM32TSMVUNR16	35	1.378	27	1.063	54	2.126	VN..160408/VN..332	IVSN322	KLM34L	CKM23LP	STCM11
1144912	KM32TSMVUNL16	35	1.378	27	1.063	54	2.126	VN..160408/VN..332	IVSN322	KLM34L	CKM23LP	STCM11

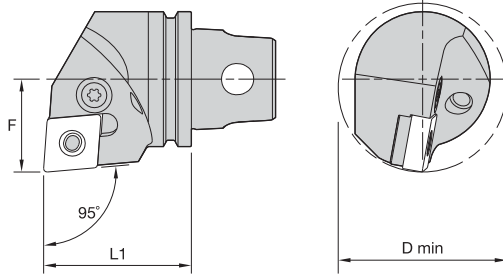


■ MWLN 95°

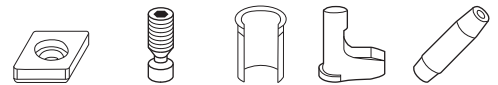


order number	catalog number	L1		F		gage insert	shim	lock pin	clamp	clamp screw
		mm	in	mm	in					
1144914	KM32TSMWLNRO8	35	1.378	22	.866	WN..080408/WN..432	IWSN433	KLM46	CKM20LP	STCM11
1144915	KM32TSMWLNLO8	35	1.378	22	.866	WN..080408/WN..432	IWSN433	KLM46	CKM20LP	STCM11

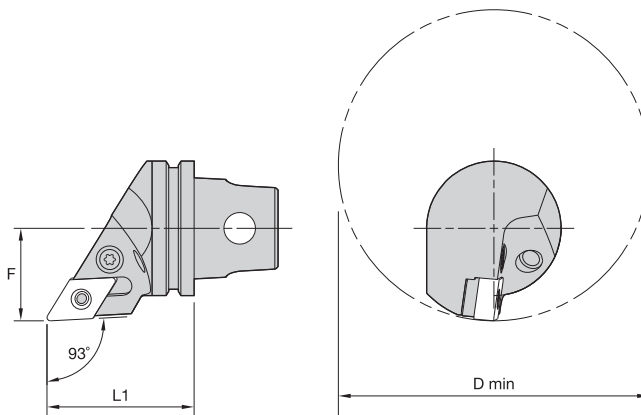




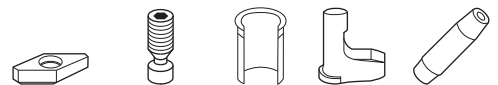
■ PCLN 95°



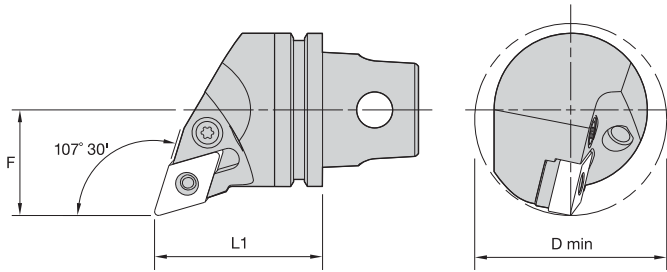
order number	catalog number	L1		F		D min		gage insert	shim	lever screw	shim pin	toggle lever	punch
		mm	in	mm	in	mm	in						
	right hand												
1624632	KM32TSPCLNR12	35	1.378	22	.866	40	1.575	CN..120408/CN..432	512.112	514.123	513.023	511.023	515.018
	left hand												
1135468	KM32TSPCLNL12	35	1.378	22	.866	40	1.575	CN..120408/CN..432	512.112	514.123	513.023	511.023	515.018



■ PDJN 93°

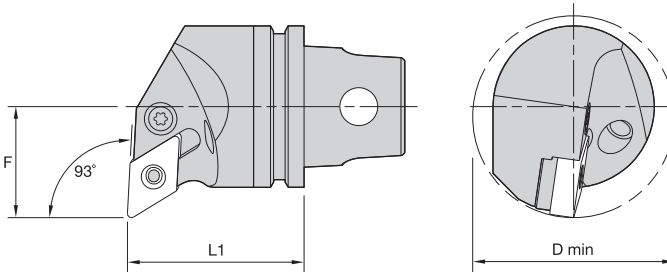


order number	catalog number	L1		F		D min		gage insert	shim	lever screw	shim pin	toggle lever	punch
		mm	in	mm	in	mm	in						
	right hand												
1232377	KM32TSPDJNR11	35	1.378	22	.866	74	2.913	DN..110408/DN..332	512.060	514.118	513.060	511.060	515.018
	left hand												
1232378	KM32TSPDJNL11	35	1.378	22	.866	74	2.913	DN..110408/DN..332	512.060	514.118	513.060	511.060	515.018



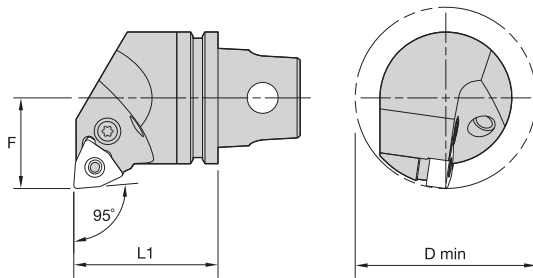
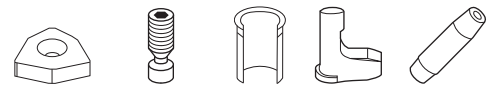
■ PDQN 107° 30'

order number	catalog number	L1		F		D min		gage insert	shim	lever screw	shim pin	toggle lever	punch
		mm	in	mm	in	mm	in						
1671515	KM32TSPDQNR11	35	1.378	22	.866	44	1.732	DN..110408/DN..332	512.060	514.118	513.060	511.060	515.018

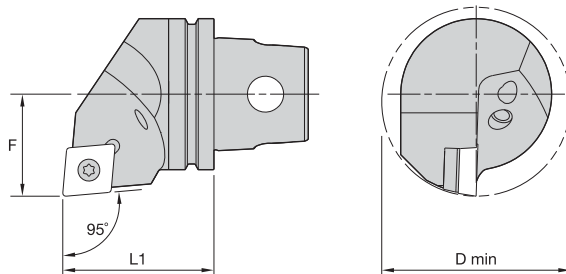


■ PDUN 93°

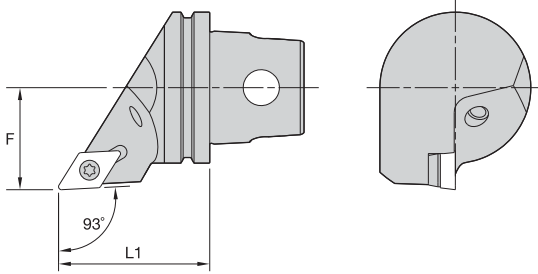
order number	catalog number	L1		F		D min		gage insert	shim	lever screw	shim pin	toggle lever	punch
		mm	in	mm	in	mm	in						
1232375	KM32TSPDUNR11	35	1.378	22	.866	40	1.575	DN..110408/DN..332	512.060	514.118	513.060	511.060	515.018
1232376	KM32TSPDUNL11	35	1.378	22	.866	40	1.575	DN..110408/DN..332	512.060	514.118	513.060	511.060	515.018


**■ PWLN 95°**


order number	catalog number	L1		F		D min		gage insert	shim	lever screw	shim pin	toggle lever	punch
		mm	in	mm	in	mm	in						
		<b>right hand</b>											
1232372	KM32TSPWLNLR06	35	1.378	22	.866	44	1.732	WN..060408/WN..332	512.134	514.118	513.018	511.018	515.018
		<b>left hand</b>											
1232374	KM32TSPWLNLR06	35	1.378	22	.866	44	1.732	WN..060408/WN..332	512.134	514.118	513.018	511.018	515.018


**■ SCLC 95°**

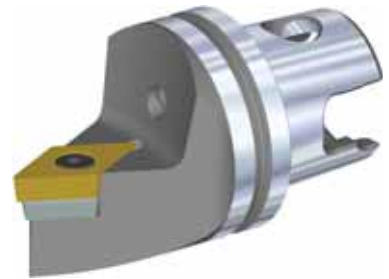
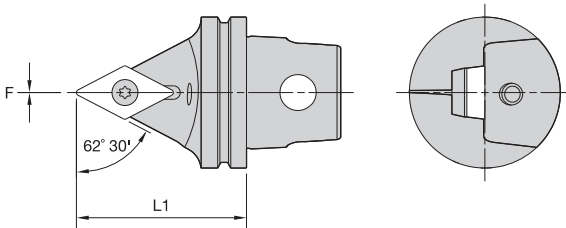

order number	catalog number	L1		F		D min		gage insert	shim	insert screw	shim screw
		mm	in	mm	in	mm	in				
		<b>right hand</b>									
1144416	KM32TSSCLCR09	35	1.378	22	.866	44	1.732	CC..09T308/CC..3252	SKCP343	MS1156	SRS3
1144430	KM32TSSCLCR12	35	1.378	22	.866	44	1.732	CC..120408/CC..432	SKCP453	MS1158	SRS4
		<b>left hand</b>									
1144417	KM32TSSCLCL09	35	1.378	22	.866	44	1.732	CC..09T308/CC..3252	SKCP343	MS1156	SRS3
1144434	KM32TSSCLCL12	35	1.378	22	.866	44	1.732	CC..120408/CC..432	SKCP453	MS1158	SRS4



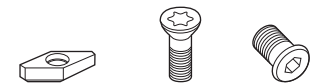
■ SDJC 93°



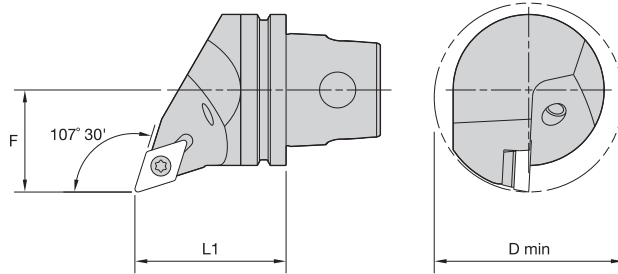
order number	catalog number	L1		F		gage insert	shim	insert screw	shim screw
		mm	in	mm	in				
1144422	right hand KM32TSSDJCR11	35	1.378	22	.866	DC..11T308/DC..3252	SKDP343	MS1156	SRS3
1144427	left hand KM32TSSDJCL11	35	1.378	22	.866	DC..11T308/DC..3252	SKDP343	MS1156	SRS3



■ SDNC 62° 30'



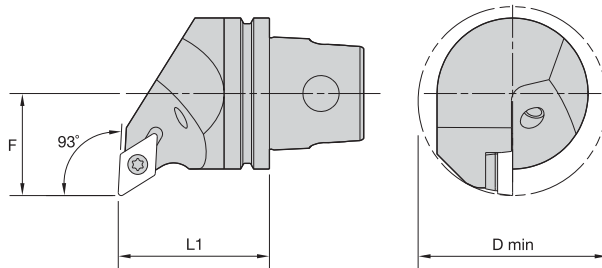
order number	catalog number	L1		F		gage insert	shim	insert screw	shim screw
		mm	in	mm	in				
1144424	KM32TSSDNCN11	35	1.378	0	.000	DC..11T308/DC..3252	SKDP343	MS1156	SRS3



## ■ SDQC 107° 30'



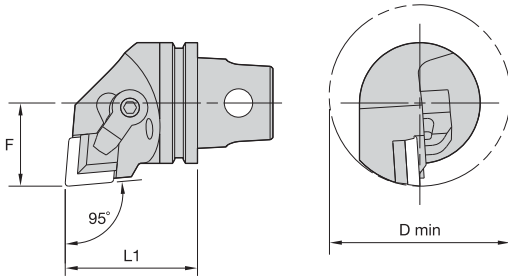
order number	catalog number	L1		F		D min		gage insert	shim	insert screw	shim screw
		mm	in	mm	in	mm	in				
1144423	right hand	35	1.378	22	.866	44	1.732	DC..11T308/DC..3252	SKDP343	MS1156	SRS3
	KM32TSSDQCR11										
1144428	left hand	35	1.378	22	.866	44	1.732	DC..11T308/DC..3252	SKDP343	MS1156	SRS3
	KM32TSSDQCL11										



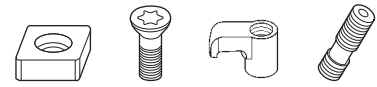
## ■ SDUC 93°



order number	catalog number	L1		F		D min		gage insert	shim	insert screw	shim screw
		mm	in	mm	in	mm	in				
1144425	right hand	35	1.378	22	.866	44	1.732	DC..11T308/DC..3252	SKDP343	MS1156	SRS3
	KM32TSSDUCR11										
1144429	left hand	35	1.378	22	.866	44	1.732	DC..11T308/DC..3252	SKDP343	MS1156	SRS3
	KM32TSSDUCL11										

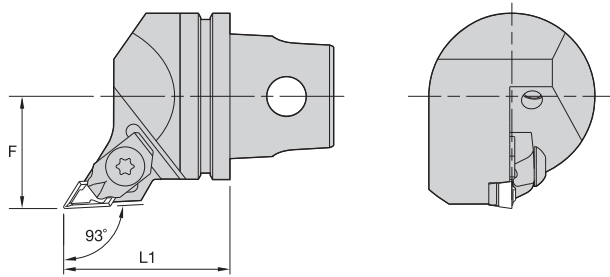


■ CCLP 95°



order number	catalog number	L1		F		D min		gage insert	shim	shim screw	clamp	clamp screw
		mm	in	mm	in	mm	in					
1091617	KM32TSCCLPL12	35	1.378	22	.866	48	1.890	CP..120308/CP.422	SM891	MS109	CKM37	STCM11

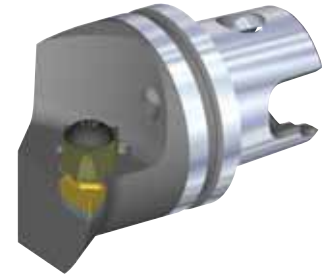
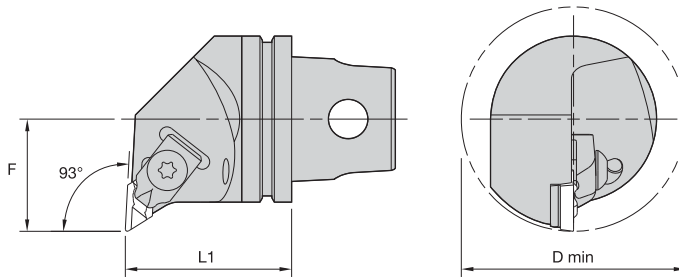
NOTE: Chipbreakers must be ordered separately. Chipbreaker catalog number is CBD-16N.



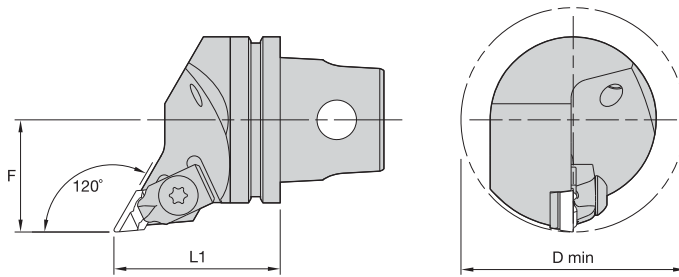
■ NKJC 93°



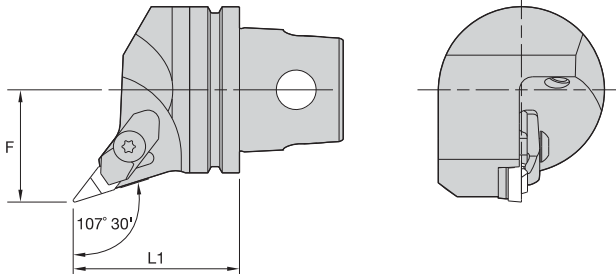
order number	catalog number	L1		F		gage insert	shim	shim screw	clamp	clamp screw
		mm	in	mm	in					
1019508	KM32TSNKJCR11	35	1.378	22	.866	KC..110304R08/NP..51R	SM885	MS959	CM71	MS1220
1019565	KM32TSNKJCL11	35	1.378	22	.866	KC..110304L08/NP..51L	SM886	MS959	CM79	MS1220


**■ NKUC 93°**

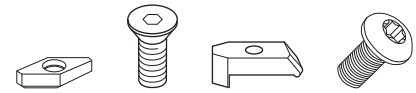

order number	catalog number	L1		F		D min		gage insert	shim	shim screw	clamp	clamp screw
		mm	in	mm	in	mm	in					
		<b>right hand</b>										
1019509	KM32TSNKUCR11	35	1.378	22	.866	44	1.732	KC..110304L08/NP..51L	SM886	MS959	CM68	MS1220
		<b>left hand</b>										
1019566	KM32TSNKUCL11	35	1.378	22	.866	44	1.732	KC..110304R08/NP..51R	SM885	MS959	CM68	MS1220


**■ NKXC 120°**

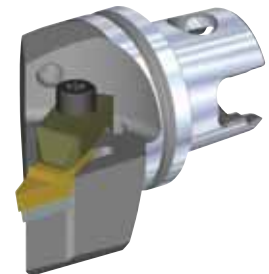
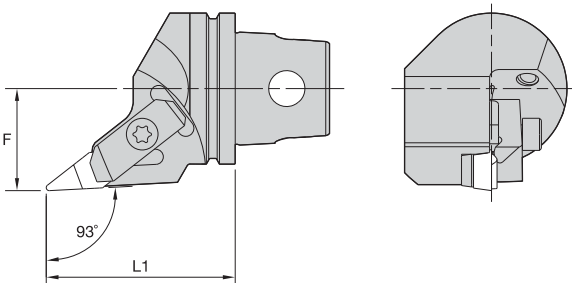

order number	catalog number	L1		F		D min		gage insert	shim	shim screw	clamp	clamp screw
		mm	in	mm	in	mm	in					
		<b>left hand</b>										
1019567	KM32TSNKXCL11	35	1.378	22	.866	44	1.732	KC..110304R08/NP..51R	SM885	MS959	CM68	MS1220



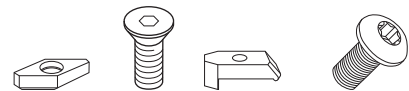
■ NVHB 107° 30'



order number	catalog number	L1		F		gage insert	shim	shim screw	clamp	clamp screw
		mm	in	mm	in					
1144421	KM32TSNVHBR11	35	1.378	22	.866	VBMR110304/VBMR221	SM813	MS959	CM158	MS1375

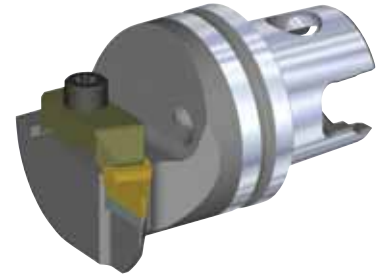
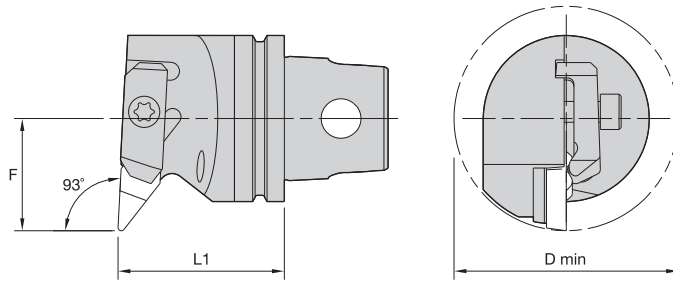


■ NVJC 93°



order number	catalog number	L1		F		gage insert	shim	shim screw	clamp	clamp screw
		mm	in	mm	in					
1144437	KM32TSNVJCR16	47	1.850	22	.866	VCGR160408/VPGR332	SM812	MS959	CM113	MS1489PKG
1144440	KM32TSNVJCL16	47	1.850	22	.866	VCGR160408/VPGR332	SM812	MS959	CM114	MS1489PKG

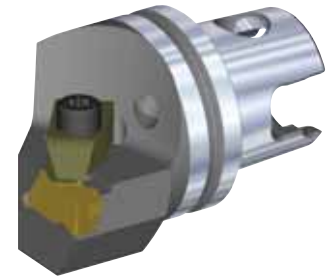
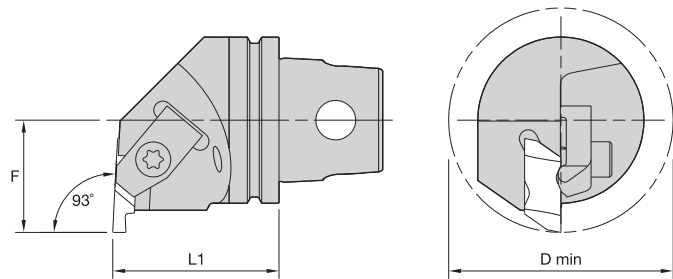




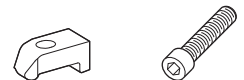
■ NVUC 93°



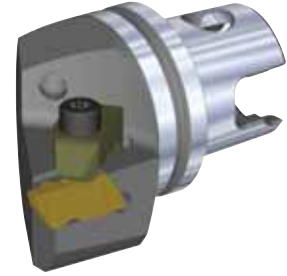
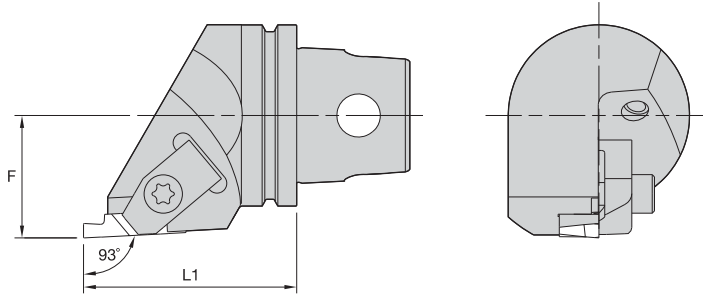
order number	catalog number	L1		F		D min		gage insert	shim	shim screw	clamp	clamp screw
		mm	in	mm	in	mm	in					
1091627	KM32TSNVUCR16 right hand	35	1.378	27	1.063	54	2.126	VCGR160408/VPGR332	SM812	MS959	CM113	MS1489
1019564	KM32TSNVUCL16 left hand	35	1.378	27	1.063	54	2.126	VCGR160408/VPGR332	SM812	MS959	CM114	MS1489



■ NE 93°



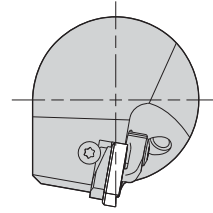
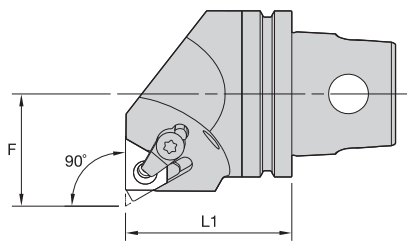
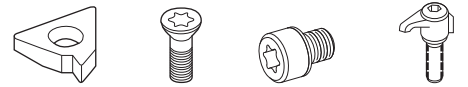
order number	catalog number	L1		F		D min		gage insert	clamp	clamp screw
		mm	in	mm	in	mm	in			
1019406	KM32TSNER2 right hand	35	1.378	22	.866	44	1.732	NG2L	CM75	MS1488
1019410	KM32TSNER3	35	1.378	22	.866	44	1.732	NG3L	CM73	MS1489



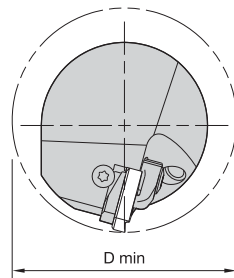
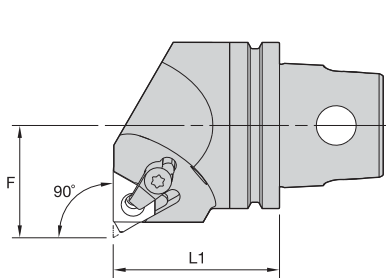
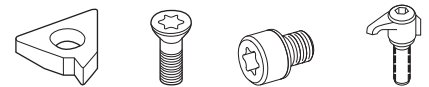
■ NS 90°

order number	catalog number	L1		F		gage insert	clamp	clamp screw
		mm	in	mm	in			
1019407	right hand KM32TSNSR2	35	1.378	22	.866	NG2R	CM74	MS1488
1019411	KM32TSNSR3 left hand	40	1.575	22	.866	NG3R	CM72	MS1489
1019409	KM32TSNSL2	35	1.378	22	.866	NG2L	CM75	MS1488
1019413	KM32TSNSL3	40	1.575	22	.866	NG3L	CM73	MS1489



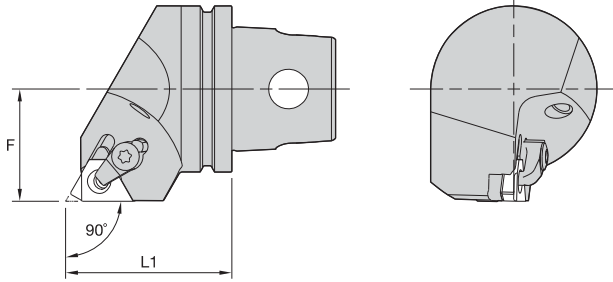

**■ LSE-E 90° • External Only**


order number	catalog number	L1		F		gage insert	shim	insert screw	shim screw	clamp assembly
		mm	in	mm	in					
1144372	KM32TSLSEL16E	35	1.378	22	.866	LT16ER	SMYE3	SSA3T	SSY3T	CKC3


**■ LSE-N 90° • Internal Only**


order number	catalog number	L1		F		D min		gage insert	shim	insert screw	shim screw	clamp assembly
		mm	in	mm	in	mm	in					
1144357	KM32TSLSER16N	35	1.378	22	.866	44	1.732	LT16NR	SMYI3	SSA3T	SSY3T	CKC3

NOTE: Cutting units are supplied with insert screw and clamp assembly. However, tools are designed to use either the insert screw or the clamp assembly, not both.



■ LSS 90°



order number	catalog number	L1		F		gage insert	shim	insert screw	shim screw	clamp assembly
		mm	in	mm	in					
1019298	right hand	35	1.378	22	.866	LT16ER	SMYE3	SSA3T	SSY3T	CKC3
	catalog number									
1019299	left hand	35	1.378	22	.866	LT16EL	SMYI3	SSA3T	SSY3T	CKC3
	catalog number									

NOTE: Cutting units are supplied with insert screw and clamp assembly. However, tools are designed to use either the insert screw or the clamp assembly, not both.