

Mill 4-11™ & Mill 4-15™



Buy 10 Inserts per Pocket
- Get the Corresponding Body (Shell Mill) Free

DEAL

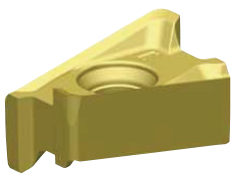
One tool for all applications.

The Mill 4™ series is specially engineered to achieve excellent surface quality and higher metal removal rates in shoulder milling applications. Its unique design allows you to apply the tool in multiple passes (stepping down) with outstanding results.

From roughing to finishing operations, the Mill 4 series is applicable in a wide range of workpiece materials: steel, cast iron, stainless steel, non-ferrous materials, and high-temp alloys.

Features and Benefits

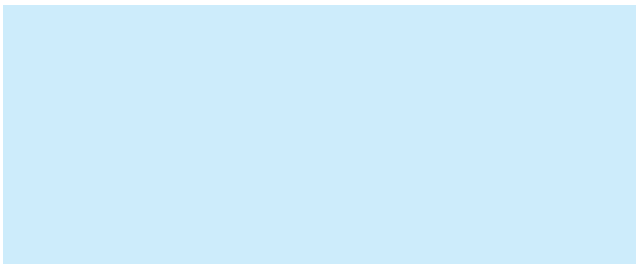
- Double-sided strong insert with 4 cutting edges.
- High positive geometry for lower cutting forces.
- Superior wall and surface finish capabilities.
- “Stepless” solution. No mismatch when machining walls in different steps.
- Comprehensive offering to cover all application in all material groups.



Returns not permitted on promotional transactions.

OFFER VALID UNTIL : March 31st, 2021

Distributed by



For more details, please refer to our Kennametal Master Catalogue Rotating Tools Vol-2, Ref Page No : T2 - T21

