

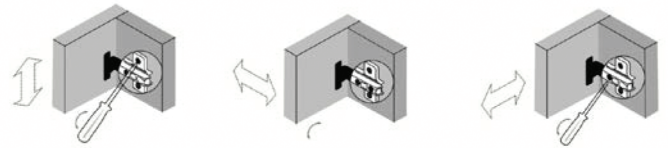
SGS



< Product description

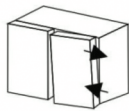
- * Opening angle 110°
- * Diameter of hinge cup : 35mm
- * Cup depth : 11.5mm
- * Drilling distance on the door : 3-6mm
- * Range of door thickness: 15-25mm
- * Door adjustment
 - Height adjustment +1.5-1.5mm
 - Side adjustment +5mm
 - Depth adjustment +2.5mm

Three-dimensional adjustment

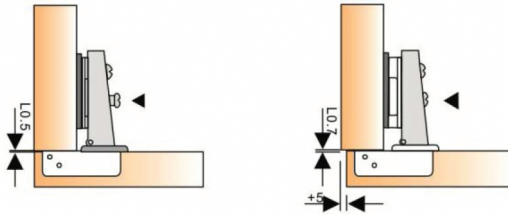


Fix Lock Germany Technology System

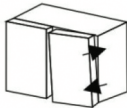
Right/left adjustment of door



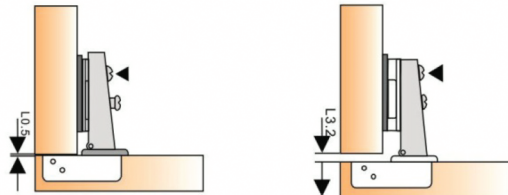
+5MM



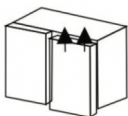
Conventional depth adjustment



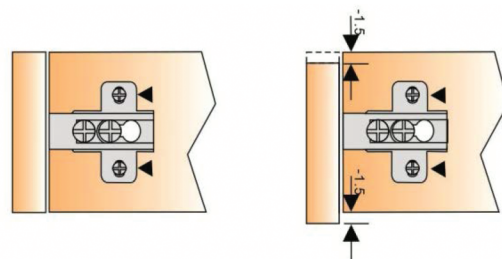
+2.5MM



Conventional up/down adjustment



+1.5-1.5MM



Type	Item no.
Full overlay	F-HIN02-3D

Type	Item no.
Half overlay	H-HIN02-3D

Type	Item no.
Inset overlay	I-HIN02-3D