



OWANDY-CR²



Owandy-CR²: intraoral imaging plate scanner

New generation of system, the most compact of the market.

So small, yet so effective...

You'll never want to be without it !

Owandy-CR²

New scanner technology thought to meet your needs

- Compact design
- An intuitive tool
- Optimized sensitivity
- Resource-sharing made easier
- Suitable for all types of clinical practice
- Technical specifications
- Ethernet or USB



COMPACT DESIGN



Owandy-CR²

Compact Design



Compact and stylish aesthetic product

- Modern medical device – Typical design signature,
- « High-tech » touch to your treatment room,
- Practice valorization.



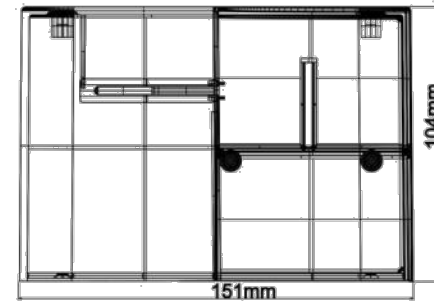
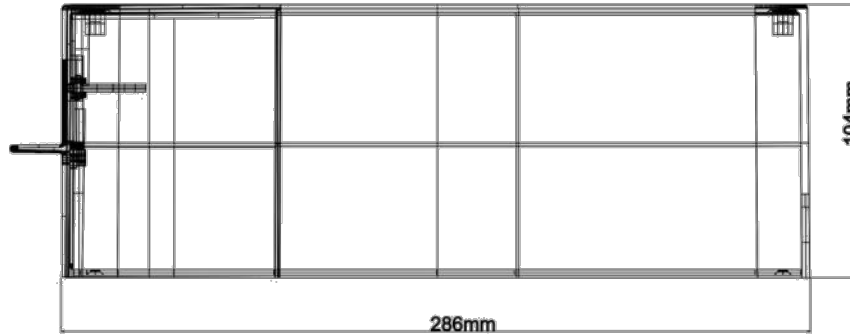
Owandy-CR²

Compact design



Industrial optimization and simplification

- Choice of a 100% Ethernet or USB technology,
- Minimal footprint and horizontal positioning,
- The most compact unit of the market, only 4 490 cm³.



Owandy-CR²

Compact design



Practice integration easier

- Easy implantation ensuring an effective protection of the system,
- Hygiene of the set plate/scanner unit: load on the front side,
- Unit installation:
 - ▶ Under a rack,
 - ▶ On a shelf,
 - ▶ In a drawer or directly on the work surface.



INTUITIVE TOOL



Owandy-CR²

An intuitive tool



The first imaging plates scanner fully automatic

- Initial product training easy,
- Immediate first use,
- « Easy-to-Use » :
 - ▶ Automatic plate detection,
 - ▶ Automatic insertion direction detection – No risk of image loss,
 - ▶ Automatic plate's size identification,
 - ▶ Automatic plates reading and erasing,
 - ▶ Automatic activation and stand-by modes.



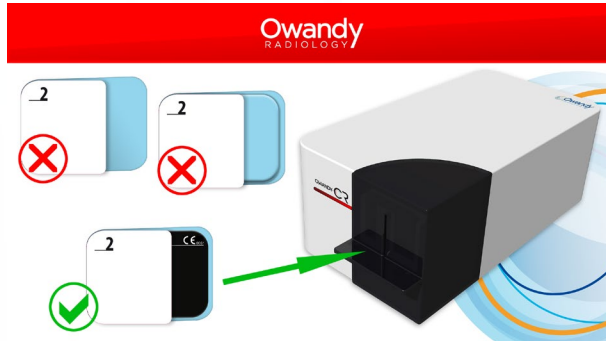
Owandy-CR²

An intuitive tool



Ergonomic graphical user interface

- Installation process like an intraoral sensor,
- Light indicator – Color + cadence = System status,
- Working with multilingual iconography:
 - ▶ Didactic status toolbar – Change of color during Waiting/Scan/Error stages,
 - ▶ User error message: plate's insertion direction.



An intuitive tool



Plates use: the sterility of whole system guaranteed

- Cardboard sleeve ensuring the protection of the plates during manipulations,
- The unit extracts automatically the plate of the cardboard protection, then reintroduces it after the image scan process: the set plate/cardboard is ready for a new use,
 - ▶ Solo system allowing to avoid any direct contact between practitioner and intraoral plate,
 - ▶ Life-span of the plates increased,
 - ▶ Image quality guaranteed.
- Single-use cover to ensure that the whole system remains sterile during the positioning in mouth.



OPTIMISED SENSITIVITY

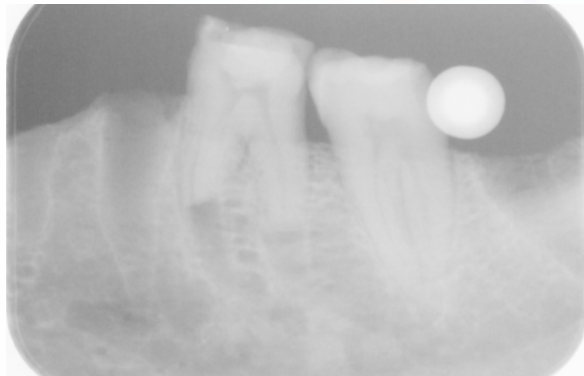


Optimised sensitivity



New special cutting-edge concept reading head

- Scanner with Photomultiplier technology,
- Signal processing chain efficiency optimised – Dual photo luminescent energy recovery system,
- Accurate images at very low doses :
 - ▶ Specific post-processing images, contrast improved and noise reduction,
 - ▶ Image quality guaranteed at equivalent doses than digital sensors, without risk of over exposure.



***Size2 plate with metallic gauge.
70ms, 7mA – 65kV***

Optimised sensitivity



The convenience of films associated to digital image quality

- 4 plates sizes compatible with the unit,
- Reusable plates several hundred times (*in following the instructions of manipulation*),
- High image quality: spatial resolution 34 pixels/mm – 16 bits.

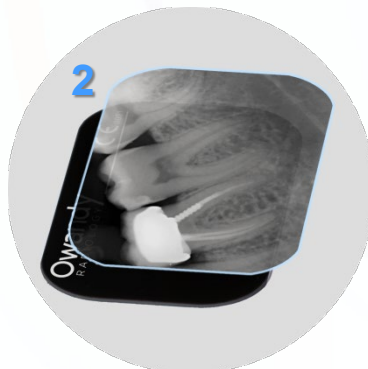
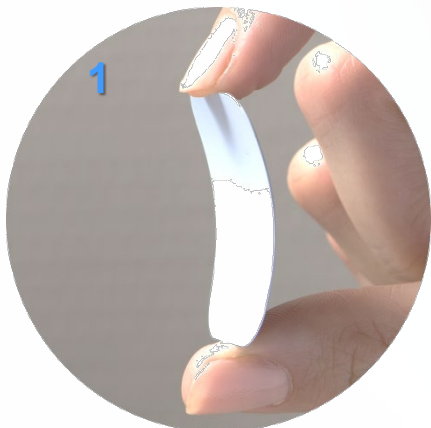


Optimised sensitivity



The convenience of films associated to digital image quality

- 1- Thin and flexible plates, without cable in patient mouth,
- 2- Optimal plates dimensions: 100% active surface,
- 3- Atraumatic plates: rounded corners.



RESOURCE-SHARING



owandy
CR²

Resource-sharing



Ethernet or Direct USB connection

- Easy to install and use,
- Standalone imaging digital system, easy to use with single or multi-user configuration practice,
- Electronics simplification – industrial optimization:
 - ▶ Ideal combination of small size and imaging technology high-definition,
 - ▶ Risk of failure decreased (*network failure, control panel...*) – hardware reliability,
 - ▶ Product and consumables global practice's budget mastered.

Owandy-CR²

Resource-sharing

System designed to an installation at the chair

- Optimised Workflow (*comparable to that of the digital sensor*) : Selection Tooth# ▶ Exposure ▶ Digitalization ▶ Displaying,
- Imaging work more intuitive and fluid,
- Direct diagnosis at the chair – scanning and displaying total time about 8 seconds.



**Every dentist will probably
want their own tool...**

SUITABLE FOR ALL TYPES OF PRACTICE



Suitable for all types of practice



System compatible with all imaging plate sizes

- Size 0, Size 1, Size 2, Size 3 or Size 4 (by software reconstruction 2xsize3),
- Appropriate for use with all types of procedure periapical, interproximal, child...
- Clinical practice and device intended use:



Endodontics



Prosthetic and implant surgery



Periodontics



Caries diagnosis

Owandy-CR²

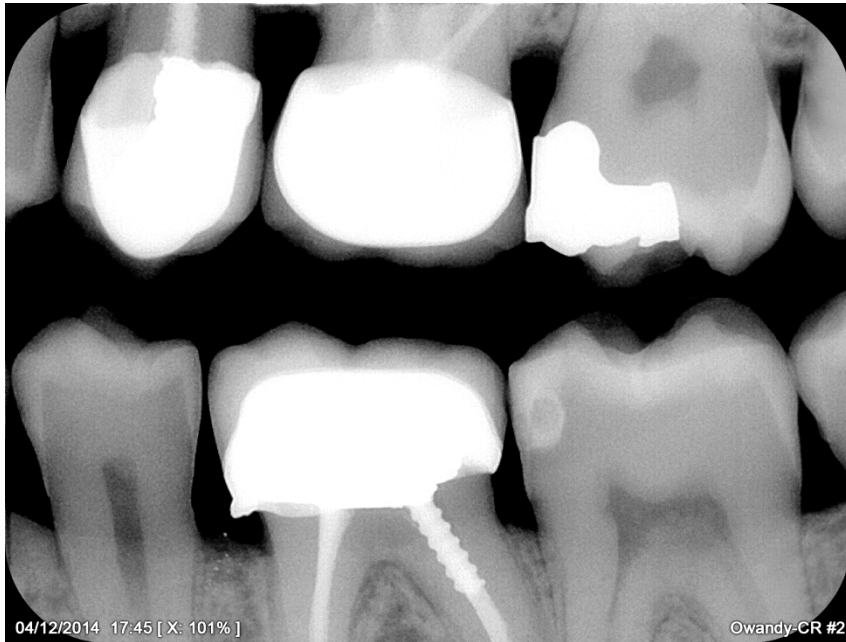
Suitable for all types of practice
Clinical images #0 and #1



Owandy-CR²

Suitable for all types of practice

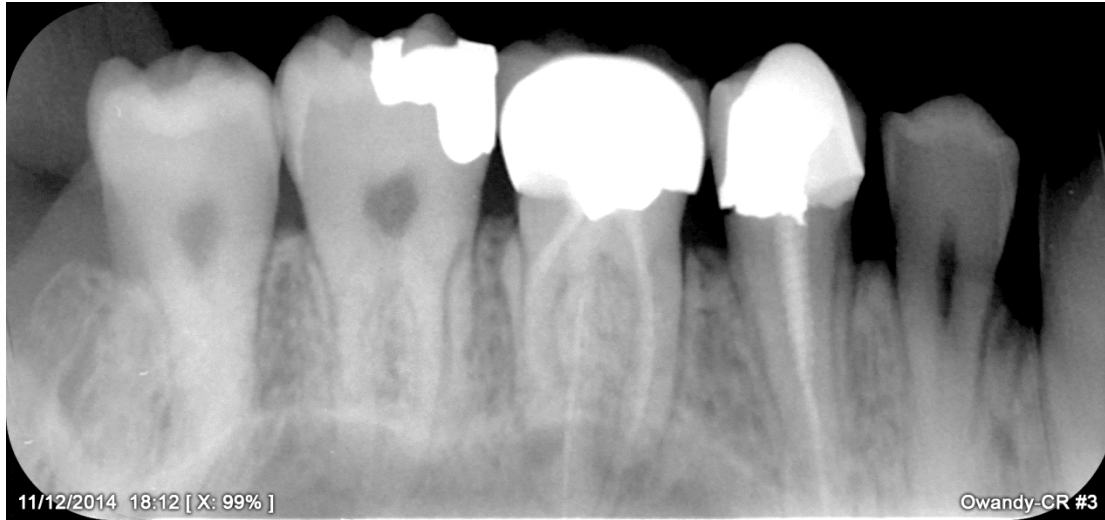
Clinical image size 2



Owandy-CR²

Suitable for all types of practice

Clinical image size 3



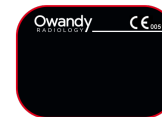
TECHNICAL SPECIFICATIONS



Owandy-CR²: technical specifications

Technology	Reusable imaging plates PSP: Photo Stimulable Phospor Plate
Resolution	34pixel/mm – 16 Bits
Pixel size	30µm
Scanning time	4,8s minimum
Connections	USB 2.0 & USB 3.0
Dimensions	286x151x104mm
Weight	4,25 kg
Power supply	110+/-240V, 50/60Hz, 24Watts
Plate size selection	Automatic detection
Stand-by unit	Automatic function
Plates dimensions	Size 0: 31x22mm, 1024x726 pixels Size 1: 40x24mm, 1321x792 pixels Size 2: 41x31mm, 1354x1024 pixels Size 3: 54x27mm, 1783x891 pixels
Operating systems	Windows 7, 8 (32-64 Bits)

Size 0



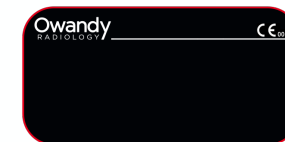
Size 1



Size 2



Size 3



Owandy-CR²: competitors overview

	<i>Owandy-CR</i>	<i>Soredex Digora Optime</i>	<i>PSPIX new</i>	<i>CS7600</i>	<i>ProScanner</i>	<i>VistaScan Mini Easy</i>	<i>VistaScan Mini Plus</i>	<i>VistaScan Mini View</i>
	OWANDY RADIOLOGY	KAVO	ACTEON	CARESTREAM	PLANMECA	DURR DENTAL	DURR DENTAL	DURR DENTAL
<i>Technology</i>	PMT - Phosphor plates	PMT - Phosphor plates	PMT - Phosphor plates	PMT - Phosphor plates	PMT - Phosphor plates	PMT - Phosphor plates	PMT - Phosphor plates	PMT - Phosphor plates
<i>Resolution</i>	34pixel/mm - 16 Bits	Theoretical 17pl/mn	Theoretical: 20pl/mm Real: 14pl/mm	Super high resol.: 17pl/mn High resol.: 14pl/mm Mode high speed: 8pl/mm	14,3pl/mm - 16bits	.40-25-20-10pl/mm Theoretical resolution, depended of the selected scan mode. .22pl/mm real claimed		
<i>Pixel size</i>	30µm	30µm - super resolution 60µm - high resolution			35µm - mode High resolution 64µm - mode standard	12,5-20-25-50µm depended of the selected scan mode		
<i>Scanning time</i>	from 4,8seconds	from 3 to 6 seconds		from 5 seconds	4,1 - 7,2s depended of size plate	from 6s to 32s depended of the size plate and selected scan mode.		
<i>Connections</i>	USB 2.0 & USB 3.0	Ethernet RJ45	Ethernet RJ45	Ethernet RJ45	USB 2.0 480Mbps - Ethernet 100Mbps	USB & Ethernet RJ45	USB & Ethernet RJ45	Ethernet - Wifi - Standalone, save on SD Card
<i>Dimensions</i>	286x151x104mm = 4 490 cm ³	152x227x308mm = 10 627 cm ³	154x204x193mm = 6 064 cm ³	267x237x260mm = 16 453 cm ³	265x120x318mm = 10 112 cm ³	226x234x243mm = 12 851 cm ³	226x234x243mm = 12 851 cm ³	226x275x243mm = 15 102 cm ³
<i>Weight</i>	4,25kg	3,5kg	2,6kg	About 6kg	5,5kg	6,5kg	6,5kg	7kg
<i>Power supply</i>	100-240V, 50-60Hz - 24Watts	100-240V, 50-60Hz	100-240V, 50-60Hz	100-240V, 50-60Hz, 1,5mA	100-240V, 50-60Hz	100-240V, 50-60Hz	100-240V, 50-60Hz	100-240V, 50-60Hz
<i>Plate size selection</i>	Automatic	Automatic	Automatic	Automatic	Preset positioning on loading tray	By insert part mechanical change	Automatic	Automatic
<i>Plates compatible</i>	#0-#1-#2-#3-#4 (soft. reconstruction 2x#3)	#0-#1-#2-#3-#4 (soft. reconstruction)	#0-#1-#2-#3-#4 (soft. reconstruction)	#0 - #1 - #2 - #3 - #4	#0 - #1 - #2 - #3 - #4	#0 or #2 only	#0 - #1 - #2 - #3 - #4	#0 - #1 - #2 - #3 - #4
<i>Information and product specifications</i>				Acc. Scan&GO: RFID reader Network automatic image files transfer Touch screen for configuration, patient and practice information selected.	Acc. ProID : reader RFID Automatic network working	Easier product of the DURR range.	Display for the selection and network control.	Touch screen high definition to manage the network and image displaying (image processing tool integrated) 4,3"-16,7 million of colors Scan manager
<i>Remarks</i>	. Automatic activation unit. . Minimal contamination risk: internal trapdore, protective rolls, front slit. . No direct contact on the plate thanks to paper protections.	OPTIME model with UV disinfection module, old generation product.	. Visually, product very small, but overall volume larger than the Owandy-CR. . Plates loading on top: contamination risk increased.		RFID plate detection and network management similar to the CARESTREAM product.	. Be careful to the real and theoretical resolutions announced by Durr Dental. These are technical resolutions of reading head alone, without taking into account the limited capability of phosphor plates. . No plate used by Durr Dental and all others units of the market is currently able to deliver effective resolution images exceeding 17pl/mm.		

COMPETITIVE ADVANTAGES SYNTHESIS



Owandy-CR²

Competitive advantages synthesis



ERGONOMIC & DESIGN

Innovative design, smallest system on the market

Thanks to electronics optimization: solo device which can be integrated inside dental furniture!

HIGH DEFINITION

The most sensitive system on the market

Image quality with doses equivalent to intraoral digital sensors

EASY TO USE & INSTALL

Fully automatic and intuitive unit – Ethernet & USB Direct

User interface simplified and didactic

COMPATIBILITY

Automatically compatible with all plate sizes, without any modification of the system insertion part

EN-Owandy-CR2_2020_V01
Confidential – 2020 Edition



OWANDY RADIOLOGY
2, rue des Vieilles Vignes - 77183 Croissy-Beaubourg, FRANCE
Tél. : +33 (0)1 64 11 18 18 - Fax : +33 (0)1 64 11 18 10
www.owandy.com

