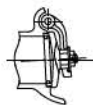


**Fig. 125FCO**

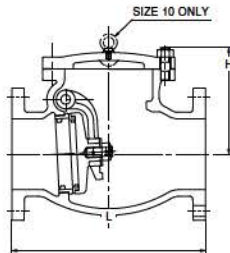
- Bronze trim

**Fig. 125FCOS**

- Stainless steel trim (13 Cr.)



SIZE 4 &amp; LARGER



### Dimensions

Valve Size	NPS	2	2½	3	4	5	6	8	10
	DN	50	65	80	100	125	150	200	250
L Face-to-face		203	216	241	292	330	356	495	622
H Height (OPEN)		111	121	145	165	207	225	268	315

mm

### Materials

Parts	Material	ASTM Spec.		
		125FCO	125FCOS	
Body	Cast Iron	A126 CL. B		
Cover	Cast Iron	A126 CL. B		
Hinge pin	Brass/Stainless Steel	B124 C37700	A276 Type403	
Disc	2 to 4	Bronze/Stainless Steel	B62	A182 Gr.F6a
	5 & larger	Cast Iron	A126 CL. B	
Disc seat ring	Bronze/Stainless Steel	B62	A182 Gr.F6a	
Body seat ring	Bronze/Stainless Steel	B62	A182 Gr.F6a	
Arm	Stainless Steel	A351 Gr.CF8		
Gasket	Asbestos-free			
Cover bolt/nut	Carbon Steel			

For ASME Valves Pressure-Temperature Ratings, refer to page 2.