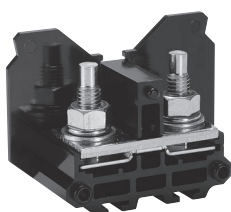


Multi-rail terminal block

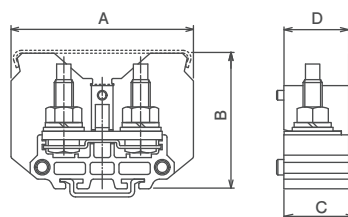
TXW Series

Stud type

Application			Type name	Number of contents	External dimensions (mm)				General mass per pole (g)
					A	B	C	D	
Terminal unit									
600V	60mm ² [130A]	M8×25 stud (With guide)	TXW 100R	6P	76	56.5	30	27	117
	60mm ² [175A]	M8×20 stud	TXW 150	6P		51	28	25	115
	100mm ² [240A]	M10×30 stud (With guide)	TXW 200R	3P	88	61	35	31	197
	200mm ² [400A] 150mm ² ×2 [500A]	M12×35 stud	TXW 400	3P	116	73.5	62	52	370
End plate									
For TXW 100R			TXWA 10	5 pieces	76	56.5	Thickness 4		14
For TXW 150			TXA 15	5 pieces		51			14
For TXW 200R			TXWA 20	5 pieces	88	61			17
For TXW 400			TXWA 40	3 pieces	116	73.5	Thickness 5		30



TXW100R

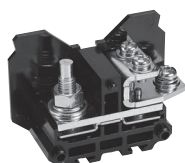


Multi-rail terminal block

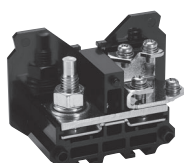
TXW-DR and TXW-DFR Series

Stud branching type

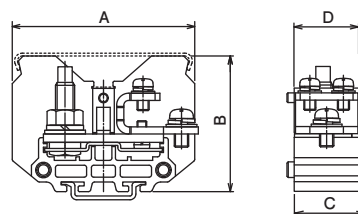
Application			Type name	Number of contents	External dimensions (mm)				General mass per pole (g)
					A	B	C	D	
Terminal unit									
600V	Input: 60mm ² [130A] Output: 22mm ² [90A] 8mm ² [50A]×2	M8×25 stud (With guide)	TXW 100 DR	6P	76	56.5	30	27	142
		M6×12± with round washer, M5×10 (2 pieces) ± with round washer							
	Input: 100mm ² [240A] Output: 38mm ² [130A] 8mm ² [50A]×2	M10×25 stud (With guide)	TXW 200 DR	3P	88	61	35	31	236
		M8×16± with round washer, M5×10 (2 pieces) ± with round washer							
	Input: 60mm ² [130A] Output: 5.5mm ² [40A]×4	M8×25 stud (With guide)	TXW 100 DFR	6P	76	56.5	30	27	125
		M4×8 (4 pieces) ± with round washer							
Input: 100mm ² [240A] Output: 8mm ² [50A]×4	M10×30 stud (With guide)	TXW 200 DFR	3P	88	61	35	31	220	
	M5×10 (4 pieces) ± with round washer								
End plate									
For TXW 100DR and TXW 100DFR			TXWA 10	5 pieces	76	56.5	Thickness 4		14
For TXW 200DR and TXW 200DFR			TXWA 20	5 pieces	88	61	Thickness 4		17



TXW100DR



TXW100DFR



Line-up
Clutch Lock
Terminal Blocks
PLC Interface
Terminal Blocks
Rail Type
Terminal Blocks
Assembly
Terminal Blocks
Special Purpose
Terminal Blocks
Terminal
Block Accessories