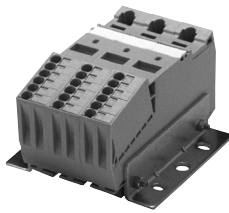


Large volume series

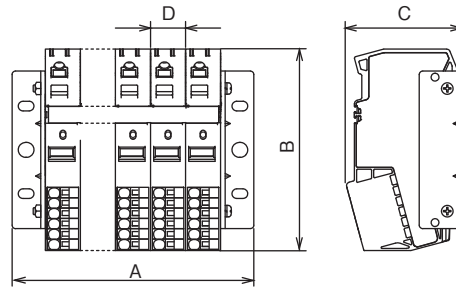
TWDM150L Series

Assembly type

Application	No. of pins	Type name	Number of contents	External dimensions (mm)				General mass (g)
				A	B	C	D	
600V 150A Input 50mm <sup>2</sup> (AWG1/0)  Output 5.5mm <sup>2</sup> (AWG10)	1	TWDM 150L ■ 01	1 piece	58	115	66.5	20	295.5
	2	TWDM 150L ■ 02		78				465.5
	3	TWDM 150L ■ 03		98				635.5
	4	TWDM 150L ■ 04		118				805.5
	5	TWDM 150L ■ 05		138				975.5
	6	TWDM 150L ■ 06		158				1145.5
	7	TWDM 150L ■ 07		178				1315.5
	8	TWDM 150L ■ 08		198				1485.5
	9	TWDM 150L ■ 09		218				1655.5
	10	TWDM 150L ■ 10		238				1825.5
	11	TWDM 150L ■ 11		258				1995.5
	12	TWDM 150L ■ 12		278				2165.5



TWDM150L



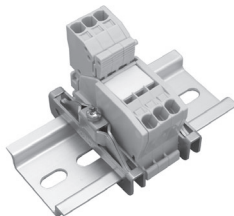
Modular series

TWS Series

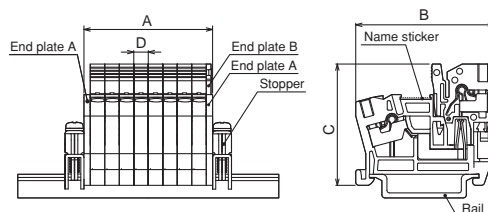
Modular type

Application	No. of pins	Type name	Number of contents	External dimensions (mm)				General mass (g)
				A	B	C	D	
250V 5A 0.75mm <sup>2</sup> (AWG18)	2	TWS 10 02	1 set	10.5	40	31.5	3.5	8
	3	TWS 10 03		14				11
	4	TWS 10 04		17.5				14
	6	TWS 10 06		24.5				20
	8	TWS 10 08		31.5				26
	10	TWS 10 10		38.5				32
250V 10A 2mm <sup>2</sup> (AWG14)	2	TWS 20 ■ 02 *	1 set	13.2	44	38.5	4.6	46
	3	TWS 20 ■ 03 *		17.8				52
	4	TWS 20 ■ 04 *		22.4				60
	6	TWS 20 ■ 06 *		31.6				71
	8	TWS 20 ■ 08 *		40.8				85
	10	TWS 20 ■ 10 *		50.0				98
600V 30A 5.5mm <sup>2</sup> (AWG10)	2	TWS 30 ■ 02 *	1 set	16	57.1	53.8	6	82
	3	TWS 30 ■ 03 *		22				96
	4	TWS 30 ■ 04 *		28				112
	5	TWS 30 ■ 05 *		34				127
	6	TWS 30 ■ 06 *		40				142

- Remarks
1. Plug (TWSP20) and plug base (TWSD20) form a set.  
Only plugs or only plug bases are also available as accessories.
  2. ■ of the type name indicates the button designated symbol.  
No symbol: With button (standard), N: Without button
  3. \* of the type name indicates the ground terminal designated symbol.  
No symbol: Standard wire (Body color: Gray), G: Ground wire (Body color: Blue)  
R: Ground for rightmost only (The rightmost pin is grounded with the plug side being front.)  
L: Ground for leftmost only (The leftmost pin is grounded with the plug side being front.)



TWS20



Line-up  
Clutch Lock Terminal Blocks  
PLC Interface Terminal Blocks  
Rail Type Terminal Blocks  
Assembly Terminal Blocks  
Special Purpose Terminal Blocks  
Terminal Block Accessories

## Clutch lock terminal block accessory

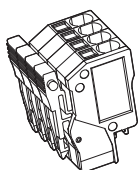
## Plug and plug base for TWS

Plug and plug base for modular type (TWS series). Use this when only multiple plugs (or only plug bases) are required or for repair.

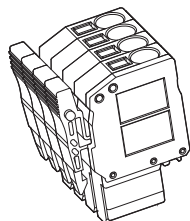
Unit for grounding terminal is also available. Standard part and ground terminal part are distinguished by the unit color.

- Unit color of standard part : Gray
- Unit color of grounding terminal : Blue

## Plug

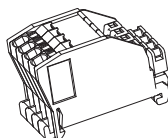


TWSP20 04

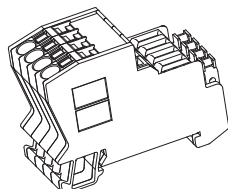


TWSP30 04

## Plug base



TWSD20 04



TWSD30 04

Part name	No. of pins	Type name			
Plug	for TWS10	2	TWSP 10 02		
		3	TWSP 10 03		
		4	TWSP 10 04		
		6	TWSP 10 06		
		8	TWSP 10 08		
		10	TWSP 10 10		
			for TWS20	2	TWSP 20 ■ 02※
				3	TWSP 20 ■ 03※
				4	TWSP 20 ■ 04※
				6	TWSP 20 ■ 06※
	8	TWSP 20 ■ 08※			
		10	TWSP 20 ■ 10※		
			for TWS30	2	TWSP 30 ■ 02※
				3	TWSP 30 ■ 03※
				4	TWSP 30 ■ 04※
5				TWSP 30 ■ 05※	
6	TWSP 30 ■ 06※				
Plug Base	for TWS10	2	TWSD 10 02		
		3	TWSD 10 03		
		4	TWSD 10 04		
		6	TWSD 10 06		
		8	TWSD 10 08		
		10	TWSD 10 10		
			for TWS20	2	TWSD 20 ■ 02※
				3	TWSD 20 ■ 03※
				4	TWSD 20 ■ 04※
				6	TWSD 20 ■ 06※
	8	TWSD 20 ■ 08※			
		10	TWSD 20 ■ 10※		
			for TWS30	2	TWSD 30 ■ 02※
				3	TWSD 30 ■ 03※
				4	TWSD 30 ■ 04※
				5	TWSD 30 ■ 05※
	6	TWSD 30 ■ 06※			

■ of the type name indicates the button designated symbol.

No symbol : With button (standard)

N : No button

※ of the type name indicates the grounding designated symbol of the plug base.

No symbol : Standard (Unit color: Gray)

G : Ground (Unit color: Blue)

R : Grounding only for the rightmost  
(The rightmost pin is grounded when the plug side is the front.)

L : Grounding only for the leftmost  
(The leftmost pin is grounded when the plug side is the front.)