

Collaboration series

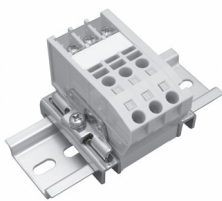
TWEU and TWY Series

One side screw type, type only for crimp terminal

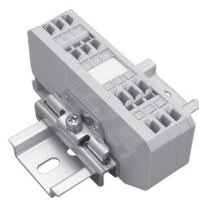
Application		Type name		Number of contents	External dimensions (mm)				General mass per pole (g)
		With button	Without button		A	B	C	D	
Terminal unit									
One side screw type 600V 20A 2mm <sup>2</sup> (AWG14)	1 to 2	TWEU 20	TWEU 20 N	25P	55	38.2	8	—	14
Type only for crimp terminal 600V 10A 1.25mm <sup>2</sup> (AWG16)	1 to 1	TWY 10	TWY 10 N	50P	53.3	36.7	4.6	—	10
	2 to 2	TWY 16	TWY 16 N	50P	76.8	36.7	4.6	—	15
End plate									
1 pair with one each at both sides	For TWEU20	TWEA 20		5 pairs	55	38.2	Thickness 5.5 <sup>Note</sup>		7
	For TWY10	TWYA 10		5 pairs	53.3	36.7	Thickness 6 <sup>Note</sup>		6
	For TWY16	TWYA 16		5 pairs	76.8	36.7	Thickness 6 <sup>Note</sup>		9

Notes:

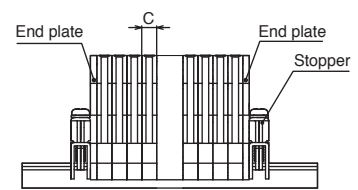
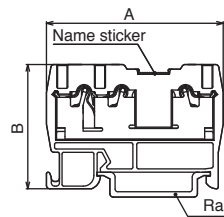
1. The thickness of end plate indicates the total size of 2 plates at both sides (1 pair).
2. End plate general mass is total of right and left 2 plates (1 pair).



TWEU20



TWY16



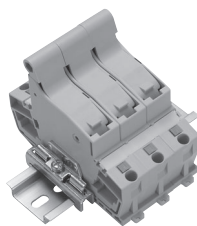
Fuse holder

TWF30 Series

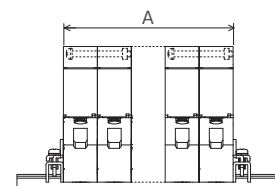
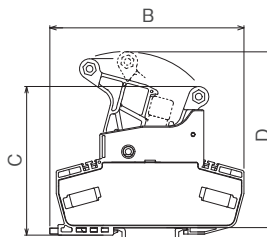
Application	No. of pins	Type name	Number of contents	External dimensions (mm)				General mass per pole (g)
				A	B	C	D	
500V 25A 5.5mm <sup>2</sup> (AWG10)	1	TWF 30	1 piece	17.5	92.5	70.5	83.5	69
	2	TWF 30 02		35				138
	3	TWF 30 03		52.5				207

Notes:

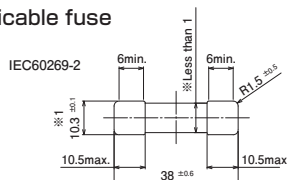
1. 3 poles type can be produced on orders.
2. Fuse, name sticker, rail, stopper are not a part of accessory.



TWF3003



Applicable fuse



- When in use with plural poles, fuse feature, which tends to be heated with electricity, should be considered.
- In UL standard, applicable fuse can be used with UL248-14 of supplemental fuse.
- When changing fuse, make sure to turn off the power of the circuit.

Line-up  
Clutch Lock Terminal Blocks  
PLC Interface Terminal Blocks  
Rail Type Terminal Blocks  
Assembly Terminal Blocks  
Special Purpose Terminal Blocks  
Terminal Block Accessories