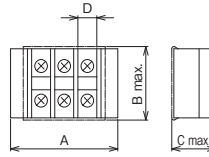


Terminal block for transformer **TEV Series**

Application			Type name	External dimensions (mm)				Number of contents	General mass (g)
				A	B	C	D		
600V with cover	2mm ²	[20A] M3, 8P integrated structure	TEV 158	88	24.5	26	6.8	50 pieces	43
	5.5mm ²	[40A] M4, 8P integrated structure	TEV 308	120	33	31	9.6	50 pieces	95



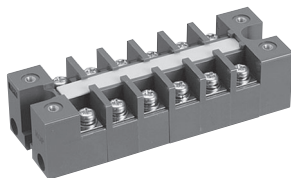
TEV 158



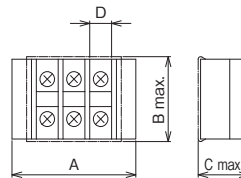
Class 1 heat resistant terminal block **TSK Series**

Application	No. of pins	Type name	External dimensions (mm)				General mass (g)
			A	B	C	D	
250V 5.5 mm ² [30A] ^{Note} M4 screw type	2	TSK 207 BK02	48.5	35	20	9.8	56
	3	TSK 207 BK03	60.5				71
	4	TSK 207 BK04	73				86
	6	TSK 207 BK06	97				116
	8	TSK 207 BK08	121.5				146
	10	TSK 207 BK10	146				175
	12	TSK 207 BK12	170.5				206

Note: It is 20A when this is used for emergency distribution panel.



TSK 207 BK 08



Line-up

Clutch Lock Terminal Blocks

PLC Interface Terminal Blocks

Rail Type Terminal Blocks

Assembly Terminal Blocks

Special Purpose Terminal Blocks

Terminal Block Accessories