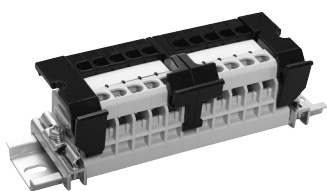


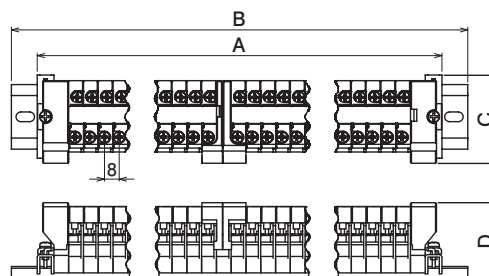
Separate type terminal block

TKS15 Series

Application		No. of pins	Type name	External dimensions (mm)				General mass (g)
				A	B	C	D	
600V 2.0mm ² [15A] M3.5×8± raised type with name sticker	5P+5P Rail integrated	10	TKS15 0505	122	150	48	42	195
	5P+10P Rail integrated	15	TKS15 0510	162	195			255
	10P+10P Rail integrated	20	TKS15 1010	202	240			310
	10P+15P Rail integrated	25	TKS15 1015	242	270			375



TKS15 0505



Fuse terminal block and Disconnect terminal block

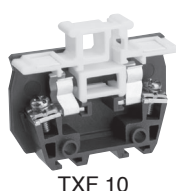
TXF and TXS Series

Application				Type name	Number of contents	External dimensions (mm)				General mass per pole (g)	
						A	B	C	D		
Terminal unit											
Fuse terminal block	600V	250V	M4 × 10	Without neon	TXF 10	20P	59	49.5	12.5	10	31
		5.5mm ² [10A]	± screw type	With neon	TXF 10 N	20P	59	49.5	12.5	10	32
Disconnecting terminal block	600V ^{Note}	5.5mm ² [20A]	M4 × 10 ± screw type		TXS 20	20P	59	40	12.5	10	26
			M4 × 8.5 ± raised type		TXSU 20	20P	62	44.7	11.5	9.7	21
Optional fuse											
6.35 × 31.8 mm glass tube			1A		TXFU 1A	1 piece	—	—	—	—	—
			3A		TXFU 3A	1 piece	—	—	—	—	—
			5A		TXFU 5A	1 piece	—	—	—	—	—
			10A		TXFU 10A	1 piece	—	—	—	—	—
End plate											
For TXF10, TXF10N and TXS20					TXFA 1	10 plates	59	40	Thickness 3.5	5	
For TXSU20					TXSUA 20	10 plates	62	36.3	Thickness 3	6.5	

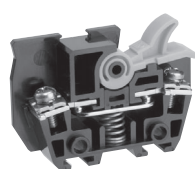
Remarks:

- The fuse terminal block with neon illuminates the neon lamp when the fuse is blown (common for 100V/200V).
- The disconnecting terminal block does not have the shutoff function. Turn ON/OFF the switch when there is no electric continuity.

Note: When complied with IEC60947-7-1, the rated insulation voltage is 800V.



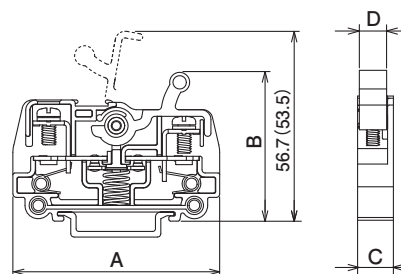
TXF 10



TXS 20



TXSU 20



※TXS20 measurement in ()

Line-up
Clutch Lock Terminal Blocks
PLC Interface Terminal Blocks
Rail Type Terminal Blocks
Assembly Terminal Blocks
Special Purpose Terminal Blocks
Terminal Block Accessories

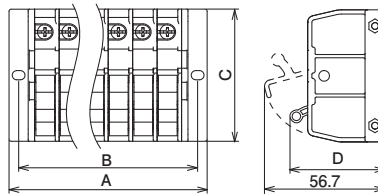
Disconnect terminal block (Assembly type) TXSUM Series

Application	No. of pins	Type name	External dimensions (mm)				General mass (g)
			A	B	C	D	
600V ^{Note} 5.5mm ² [20A] M4×8.5± raised type with name sticker	2	TXSUM 20 02	47	38	62	44.7	63
	3	TXSUM 20 03	58.5	49.5			85
	4	TXSUM 20 04	70	61			106
	5	TXSUM 20 05	81.5	72.5			128
	6	TXSUM 20 06	93	84			149
	7	TXSUM 20 07	104.5	95.5			171
	8	TXSUM 20 08	116	107			192

Remark: Disconnect terminal block does not have shutoff function. Turn ON/OFF switch when there is no electric continuity.
Note: When complied with IEC60947-7-1, the rated insulation voltage is 800V.



TXSUM 20 06

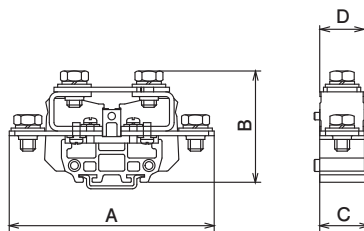


Terminal block for grounding TXG Series

Application		Type name	Number of contents	External dimensions (mm)				General mass per 1 piece (g)
				A	B	C	D	
Terminal unit								
600V	38mm ² [130A] M8	TXG 100	6 pieces	110	60	27	24	189
	100mm ² [240A] M10	TXG 200	3 pieces	132	71.5	39	30	413
End plate								
For TXG100		TXGA 10	5 plates	—	—	Thickness 4		11
Dummy block								
For TXG100		TXG 100D	6 pieces	—	—	—	—	25
For TXG200		TXG 200D	3 pieces	—	—	—	—	51



TXG 200

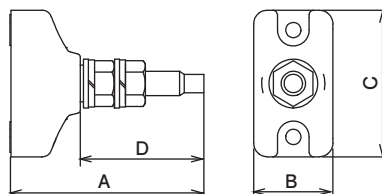


Stud terminal block TS-R Series

Application		Type name	External dimensions (mm)				General mass (g)
			A	B	C	D	
600V	38mm ² [130A] M8	TS 100R	64.3	26	48	38.3	80
	100mm ² [240A] M10	TS 200R	75.5	36	60	45	145
	200mm ² [370A] M12	TS 400R	92.3	40	70	58.3	285
	325mm ² [520A] M16	TS 600R	115	48	75	75.8	410



TS 100R



Line-up
Clutch Lock Terminal Blocks
PLC Interface Terminal Blocks
Rail Type Terminal Blocks
Assembly Terminal Blocks
Special Purpose Terminal Blocks
Terminal Block Accessories