

Compact series (assembly type)

TWM Series

Compact assembly type (1/3)

600V, 10A, 1.25mm ² (AWG16)															
No. of pins	1 to 1				General mass (g)	1 to 2				General mass (g)	2 to 2				General mass (g)
	Type name	External dimensions (mm)				Type name	External dimensions (mm)				Type name	External dimensions (mm)			
		A	B	C D			A	B	C D			A	B	C D	
1	TWM 10B ■ 01	27.1	B=34.8,		5.9	TWM 15B ■ 01	27.1	B=42.7,	6.7	TWM 16B ■ 01	27.1	B=50.6,		7.6	
2	TWM 10B ■ 02	30.6	C=22,		8.9	TWM 15B ■ 02	30.6	C=22,	10.2	TWM 16B ■ 02	30.6	C=22,		11.5	
3	TWM 10B ■ 03	34.1	D=3.5		11.9	TWM 15B ■ 03	34.1	D=3.5	13.7	TWM 16B ■ 03	34.1	D=3.5		15.4	
4	TWM 10B ■ 04	37.6			14.9	TWM 15B ■ 04	37.6		17.2	TWM 16B ■ 04	37.6			19.3	
5	TWM 10B ■ 05	41.1			17.9	TWM 15B ■ 05	41.1		20.7	TWM 16B ■ 05	41.1			23.2	
6	TWM 10B ■ 06	44.6			20.9	TWM 15B ■ 06	44.6		24.2	TWM 16B ■ 06	44.6			27.1	
7	TWM 10B ■ 07	48.1			23.9	TWM 15B ■ 07	48.1		27.7	TWM 16B ■ 07	48.1			31.0	
8	TWM 10B ■ 08	51.6			26.9	TWM 15B ■ 08	51.6		31.2	TWM 16B ■ 08	51.6			34.9	
9	TWM 10B ■ 09	55.1			29.9	TWM 15B ■ 09	55.1		34.7	TWM 16B ■ 09	55.1			38.8	
10	TWM 10B ■ 10	58.6			32.9	TWM 15B ■ 10	58.6		38.2	TWM 16B ■ 10	58.6			42.7	
11	TWM 10B ■ 11	62.1			35.9	TWM 15B ■ 11	62.1		41.7	TWM 16B ■ 11	62.1			46.6	
12	TWM 10B ■ 12	65.6			38.9	TWM 15B ■ 12	65.6		45.2	TWM 16B ■ 12	65.6			50.5	
13	TWM 10B ■ 13	69.1			41.9	TWM 15B ■ 13	69.1		48.7	TWM 16B ■ 13	69.1			54.4	
14	TWM 10B ■ 14	72.6			44.9	TWM 15B ■ 14	72.6		52.2	TWM 16B ■ 14	72.6			58.3	
15	TWM 10B ■ 15	76.1			47.9	TWM 15B ■ 15	76.1		55.7	TWM 16B ■ 15	76.1			62.2	
16	TWM 10B ■ 16	79.6			50.9	TWM 15B ■ 16	79.6		59.2	TWM 16B ■ 16	79.6			66.1	
17	TWM 10B ■ 17	83.1			53.9	TWM 15B ■ 17	83.1		62.7	TWM 16B ■ 17	83.1			70.0	
18	TWM 10B ■ 18	86.6			56.9	TWM 15B ■ 18	86.6		66.2	TWM 16B ■ 18	86.6			73.9	
19	TWM 10B ■ 19	90.1			59.9	TWM 15B ■ 19	90.1		69.7	TWM 16B ■ 19	90.1			77.8	
20	TWM 10B ■ 20	93.6			62.9	TWM 15B ■ 20	93.6		73.2	TWM 16B ■ 20	93.6			81.7	

Remark:

■ of the type name indicates the button designated symbol.

No symbol: With button (standard), N: Without button

※Assembled type sold per 1 piece.



TWM10B



TWM15B



TWM16B

Compact assembly type (2/3)

600V, 20A, 2mm ² (AWG14)															
No. of pins	1 to 1				General mass (g)	1 to 2				General mass (g)	2 to 2				General mass (g)
	Type name	External dimensions (mm)				Type name	External dimensions (mm)				Type name	External dimensions (mm)			
		A	B	C D			A	B	C D			A	B	C D	
1	TWM 20B ■ 01	29.8	B=38,		9.8	TWM 25B ■ 01	29.8	B=46.5,	9.3	TWM 26B ■ 01	29.8	B=55,		10.3	
2	TWM 20B ■ 02	34.4	C=24.4,		14.5	TWM 25B ■ 02	34.4	C=24.4,	14.4	TWM 26B ■ 02	34.4	C=24.4,		16.1	
3	TWM 20B ■ 03	39	D=4.6		19.2	TWM 25B ■ 03	39	D=4.6	19.5	TWM 26B ■ 03	39	D=4.6		21.9	
4	TWM 20B ■ 04	43.6			23.9	TWM 25B ■ 04	43.6		24.6	TWM 26B ■ 04	43.6			27.7	
5	TWM 20B ■ 05	48.2			28.6	TWM 25B ■ 05	48.2		29.7	TWM 26B ■ 05	48.2			33.5	
6	TWM 20B ■ 06	52.8			33.3	TWM 25B ■ 06	52.8		34.8	TWM 26B ■ 06	52.8			39.3	
7	TWM 20B ■ 07	57.4			38.0	TWM 25B ■ 07	57.4		39.9	TWM 26B ■ 07	57.4			45.1	
8	TWM 20B ■ 08	62			42.7	TWM 25B ■ 08	62		45.0	TWM 26B ■ 08	62			50.9	
9	TWM 20B ■ 09	66.6			47.4	TWM 25B ■ 09	66.6		50.1	TWM 26B ■ 09	66.6			56.7	
10	TWM 20B ■ 10	71.2			52.1	TWM 25B ■ 10	71.2		55.2	TWM 26B ■ 10	71.2			62.5	
11	TWM 20B ■ 11	75.8			56.8	TWM 25B ■ 11	75.8		60.3	TWM 26B ■ 11	75.8			68.3	
12	TWM 20B ■ 12	80.4			61.5	TWM 25B ■ 12	80.4		65.4	TWM 26B ■ 12	80.4			74.1	
13	TWM 20B ■ 13	85			66.2	TWM 25B ■ 13	85		70.5	TWM 26B ■ 13	85			79.9	
14	TWM 20B ■ 14	89.6			70.9	TWM 25B ■ 14	89.6		75.6	TWM 26B ■ 14	89.6			85.7	
15	TWM 20B ■ 15	94.2			75.6	TWM 25B ■ 15	94.2		80.7	TWM 26B ■ 15	94.2			91.5	
16	TWM 20B ■ 16	98.8			80.3	TWM 25B ■ 16	98.8		85.8	TWM 26B ■ 16	98.8			97.3	
17	TWM 20B ■ 17	103.4			85.0	TWM 25B ■ 17	103.4		90.9	TWM 26B ■ 17	103.4			103.1	
18	TWM 20B ■ 18	108			89.7	TWM 25B ■ 18	108		96.0	TWM 26B ■ 18	108			108.9	
19	TWM 20B ■ 19	112.6			94.4	TWM 25B ■ 19	112.6		101.1	TWM 26B ■ 19	112.6			147.7	
20	TWM 20B ■ 20	117.2			99.1	TWM 25B ■ 20	117.2		106.2	TWM 26B ■ 20	117.2			120.5	

Remark:

■ of the type name indicates the button designated symbol.

No symbol: With button (standard), N: Without button

※Assembled type sold per 1 piece.



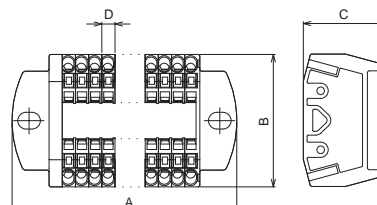
TWM20B



TWM25B



TWM26B



Line-up
Terminal Blocks
Clutch Lock
Terminal Blocks
PLC Interface
Terminal Blocks
Rail Type
Terminal Blocks
Assembly
Terminal Blocks
Special Purpose
Terminal Blocks
Terminal Block Accessories

Compact series (assembly type) TWM Series

Compact assembly type (3/3)

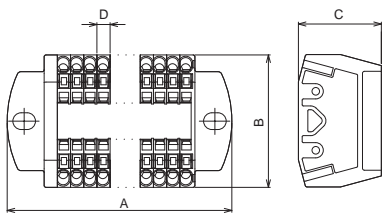
No. of pins	Type name	External dimensions (mm)				General mass (g)	Type name	External dimensions (mm)				General mass (g)
		A	B	C	D			A	B	C	D	
1 to 1		600V, 30A, 5.5mm ² (AWG10)				16.7	1 to 1	600V, 50A, 8mm ² (AWG8)				35.3
1	TWM 30B ■ 01	31.2	B=50,			16.7	TWM 50B ■ 01	36.3	B=65.5,			35.3
2	TWM 30B ■ 02	37.2	C=31.1,		25.8	25.8	TWM 50B ■ 02	45.8	C=38,		61.5	61.5
3	TWM 30B ■ 03	43.2	D=6		34.9	34.9	TWM 50B ■ 03	55.3	D=9.5		87.7	87.7
4	TWM 30B ■ 04	49.2			44.0	44.0	TWM 50B ■ 04	64.8			113.9	113.9
5	TWM 30B ■ 05	55.2			53.1	53.1	TWM 50B ■ 05	74.3			140.1	140.1
6	TWM 30B ■ 06	61.2			62.2	62.2	TWM 50B ■ 06	83.8			166.3	166.3
7	TWM 30B ■ 07	67.2			71.3	71.3	TWM 50B ■ 07	93.3			192.5	192.5
8	TWM 30B ■ 08	73.2			80.4	80.4	TWM 50B ■ 08	102.8			218.7	218.7
9	TWM 30B ■ 09	79.2			89.5	89.5	TWM 50B ■ 09	112.3			244.9	244.9
10	TWM 30B ■ 10	85.2			98.6	98.6	TWM 50B ■ 10	121.8			271.1	271.1
11	TWM 30B ■ 11	91.2			107.7	107.7						
12	TWM 30B ■ 12	97.2			116.8	116.8						
13	TWM 30B ■ 13	103.2			125.9	125.9						
14	TWM 30B ■ 14	109.2			135.0	135.0						
15	TWM 30B ■ 15	115.2			144.1	144.1						
16	TWM 30B ■ 16	121.2			153.2	153.2						
17	TWM 30B ■ 17	127.2			162.3	162.3						
18	TWM 30B ■ 18	133.2			171.4	171.4						
19	TWM 30B ■ 19	139.2			180.5	180.5						
20	TWM 30B ■ 20	145.2			189.6	189.6						



TWM30B



TWM50B

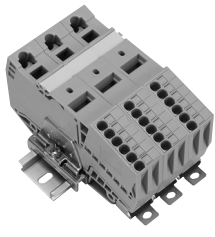


Remark:
 ■ of the type name indicates the button designated symbol.
 No symbol: With button (standard), N: Without button
 ※Assembled type sold per 1 piece.

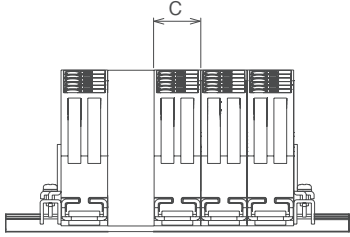
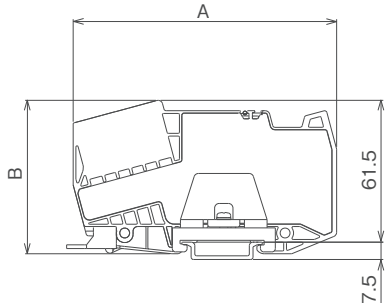
Large volume series TWD150L Series

Rail type

Application	Type name	Number of contents	External dimensions (mm)				General mass per pole (g)		
			With button	Without button	A	B		C	D
600V 150A Input 50mm ² (AWG1/0) Output 5.5mm ² (AWG10)	TWD150L TWD150LN	1P			115	66.5	20	—	168



TWD150L



Line-up
 Clutch Lock Terminal Blocks
 PLC Interface Terminal Blocks
 Rail Type Terminal Blocks
 Assembly Terminal Blocks
 Special Purpose Terminal Blocks
 Terminal Block Accessories