

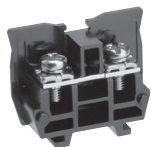
C rail type terminal block

TR Series

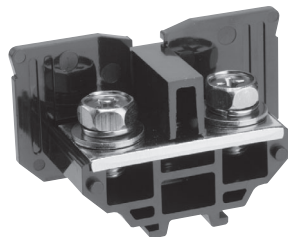
Application			Type name	Number of contents	External dimensions (mm)				General mass per pole (g)
					A	B	C	D	
Terminal unit									
600V	1.25mm <sup>2</sup> [15A]	M3×8± screw type	TR 10 SK	60P	32.5	28.5	8	6.7	5.5
	2mm <sup>2</sup> [20A]	M3.5×8± screw type	TR 10 K	60P	32.5	28.5	9.5	8	7
	5.5mm <sup>2</sup> [40A]	M4×10± screw type	TR 20 K	60P	36.5	30.5	11	9.2	11
	8mm <sup>2</sup> [50A]	M5×12± screw type	TR 30 K	30P	45.5	34	14.5	12.5	21
	22mm <sup>2</sup> [90A]	M6×12± with round washer	TR 60 K	10P	53	37	19.5	17	35
	38mm <sup>2</sup> [130A]	M8×14± hexagonal bolt	TR 100 K	6P	71	45	27	24	79
	100mm <sup>2</sup> [240A]	M10×20± hexagonal bolt	TR 200 K	3P	83.5	57.5	39	31	180
	200mm <sup>2</sup> [400A] 150mm <sup>2</sup> ×2 [500A]	M12×25 hexagonal bolt	TR 400 K	3P	120	73.5	62	52	370
End plate									
For TR 10SK and TR 10K			TRA 1 □K	10 pieces	33	28.5	Thickness 2.5	2	
For TR 20K			TRA 2 □K	10 pieces	37	30.5	Thickness 2.5	2	
For TR 30K			TRA 3 □K	10 pieces	46	34	Thickness 3.2	2.5	
For TR 60K			TRA 6 □K	5 pieces	53	37.5	Thickness 3.3	5	
For TR 100K			TRA 10 □K	5 pieces	71	45	Thickness 4	10	

Remarks:

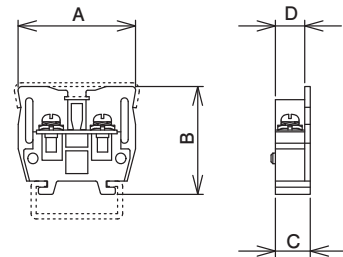
- of the end plate type name indicates the designated symbol for presence of seal groove. No symbol (With seal groove), N (No seal groove)
- The type without seal groove also functions as seal stopper. Two are used at both ends.



TR20K



TR100K



Line-up  
Clutch Lock  
Terminal Blocks  
PLC Interface  
Terminal Blocks  
Rail Type  
Terminal Blocks  
Assembly  
Terminal Blocks  
Special Purpose  
Terminal Blocks  
Terminal  
Block Accessories