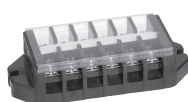


Assembled terminal block

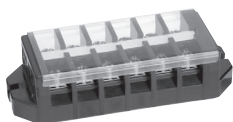
TL Series

No. of pins	600V, 2mm ² [20A], M3.5×7±, screw type					600V, 5.5mm ² [40A], M4×10±, screw type					600V, 8mm ² [50A], M5×12±, screw type							
	Type name	External dimensions (mm)				General mass (g)	Type name	External dimensions (mm)				General mass (g)	Type name	External dimensions (mm)				General mass (g)
		A	B	C	D			A	B	C	D			A	B	C	D	
2	TL 15 02	50	B=35,		40	TL 25 02	55	B=40,		55	TL 35 02	66	B=49,		95			
3	TL 15 03	60	C=26,		50	TL 25 03	67	C=28,		70	TL 35 03	82	C=31,		125			
4	TL 15 04	70	D=8		60	TL 25 04	79	D=95		85	TL 35 04	97	D=12.5		155			
5	TL 15 05	80			70	—	—		—	—	—			—				
6	TL 15 06	90			80	TL 25 06	103			115	TL 35 06	128			210			
8	TL 15 08	110			100	TL 25 08	127			145	TL 35 08	159			270			
10	TL 15 10	130			125	TL 25 10	151			175	TL 35 10	190			330			
12	TL 15 12	150			145	TL 25 12	175			205	TL 35 12	221			385			
14	TL 15 14	170			165	TL 25 14	199			240	—	—			—			
15	TL 15 15	180			175	TL 25 15	211			255	TL 35 15	268			475			
16	TL 15 16	190			185	TL 25 16	223			270	—	—			—			
18	TL 15 18	210			205	TL 25 18	247			300	TL 35 18	314			540			
20	TL 15 20	230			230	TL 25 20	271			330	TL 35 20	345			600			
22	TL 15 22	250			250	TL 25 22	295			360	—	—			—			
24	TL 15 24	270			270	TL 25 24	319			390	—	—			—			
25	TL 15 25	280			280	TL 25 25	331			405	—	—			—			
30	TL 15 30	330			335	TL 25 30	391			480	—	—			—			

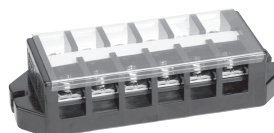
Remark: With cover and name sticker.



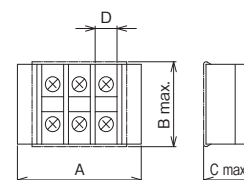
TL 15 06



TL 25 06



TL 35 06



Rating when the product is used as UL/CSA standard certified part

Basic type name	Rated voltage (V)	UL standard				CSA standard		
		Rated current (A)	Applicable wire (AWG/MCM) ^{Note 1}		FW ^{Note 2}	Rated current (A)	Applicable wire (AWG/MCM) ^{Note 1}	
			Single wire	Stranded wire				
TL 15	600	20	20 to 14	20 to 14	2	20	20 to 14	
TL 25	600	30	18 to 10	18 to 10	2	30	18 to 10	
TL 35	600	50	16 to 12	16 to 10	1	45	16 to 10	
				*8			*8	

Notes:

1. The table above is based on connection to the copper bare wire and the crimp terminal. The applicable wires with * indicates connection to the crimp terminal only. Use UL standard parts and c-UL-us standard parts for crimp terminal. Be careful for the following points:

- Connection to crimp terminal: Use the crimp terminal with insulated coating or insulate the bare crimp terminal with sleeve, tube or tape.
- Connection to two bare wires: Connect the wire with the same size and type (single wire or stranded). Do not connect the wires with different sizes and types.

2. FW1: Factory wiring, FW2: Factory wiring and field wiring

Line-up
Clutch Lock
Terminal Blocks
PLC Interface
Terminal Blocks
Rail Type
Terminal Blocks
Assembly
Terminal Blocks
Special Purpose
Terminal Blocks
Terminal Block Accessories