

2-Layer type assembled terminal block **TTGM Series**

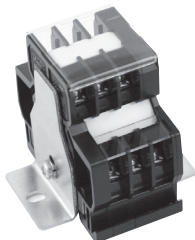
2-Layer type assembled terminal block (1/2)

No. of pins	600V, 2mm <sup>2</sup> [20A], M3×8±, screw type					600V, 2mm <sup>2</sup> [20A], M3×8±, raised type					600V, 2mm <sup>2</sup> [20A], M3.5×8±, screw type							
	Type name	External dimensions (mm)				General mass (g)	Type name	External dimensions (mm)				General mass (g)	Type name	External dimensions (mm)				General mass (g)
A	B	C	D	A	B		C	D	A	B	C		D					
2	TTGM 203 02	52	B=62,			96	TTGM 20U3 02	52	B=62,			98	TTGM 2035 02	52	B=62,			98
3	TTGM 203 03	60	C=57.6,			114	TTGM 20U3 03	60	C=57.6,			118	TTGM 2035 03	60	C=57.6,			118
4	TTGM 203 04	68	D=6.7			132	TTGM 20U3 04	68	D=6.7			138	TTGM 2035 04	68	D=6.7			138
6	TTGM 203 06	84				168	TTGM 20U3 06	84				178	TTGM 2035 06	84				178
8	TTGM 203 08	100				204	TTGM 20U3 08	100				218	TTGM 2035 08	100				218
10	TTGM 203 10	116				240	TTGM 20U3 10	116				258	TTGM 2035 10	116				258
12	TTGM 203 12	132				276	TTGM 20U3 12	132				298	TTGM 2035 12	132				298
15	TTGM 203 15	156				330	TTGM 20U3 15	156				358	TTGM 2035 15	156				358
18	TTGM 203 18	180				384	TTGM 20U3 18	180				418	TTGM 2035 18	180				418
20	TTGM 203 20	196				420	TTGM 20U3 20	196				458	TTGM 2035 20	196				458

2-Layer type assembled terminal block (2/2)

No. of pins	600V, 2mm <sup>2</sup> [20A], M3.5×8±, raised type					600V, 5.5mm <sup>2</sup> [40A], M4×10±, screw type					600V, 5.5mm <sup>2</sup> [40A], M4×10±, raised type							
	Type name	External dimensions (mm)				General mass (g)	Type name	External dimensions (mm)				General mass (g)	Type name	External dimensions (mm)				General mass (g)
A	B	C	D	A	B		C	D	A	B	C		D					
2	TTGM 20U35 02	52	B=62,			100	TTGM 40 02	61	B=67,			127	TTGM 40U 02	61	B=67,			129
3	TTGM 20U35 03	60	C=57.6,			122	TTGM 40 03	72	C=62.6,			159	TTGM 40U 03	72	C=62.6,			161
4	TTGM 20U35 04	68	D=6.7			144	TTGM 40 04	83	D=9.7			191	TTGM 40U 04	83	D=9.7			193
6	TTGM 20U35 06	84				188	TTGM 40 06	105				255	TTGM 40U 06	105				257
8	TTGM 20U35 08	100				232	TTGM 40 08	127				319	TTGM 40U 08	127				321
10	TTGM 20U35 10	116				276	TTGM 40 10	149				383	TTGM 40U 10	149				385
12	TTGM 20U35 12	132				320	TTGM 40 12	171				447	TTGM 40U 12	171				449
15	TTGM 20U35 15	156				386	TTGM 40 15	204				543	TTGM 40U 15	204				545
18	TTGM 20U35 18	180				452	TTGM 40 18	237				639	TTGM 40U 18	237				641
20	TTGM 20U35 20	196				496	TTGM 40 20	259				703	TTGM 40U 20	259				705

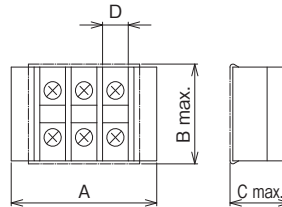
Remark: With cover and name sticker.



TTGM 203 03



TTGM 40 03



Rating when the product is used as c-UL-us certified part or EN/IEC standard certified part (TÜV certification CE)

Basic type name		Rated voltage (V)	EN/IEC standard				UL standard				CSA standard	
			Rated current (A)	Applicable wire (AWG/MCM) <sup>Note</sup>		Rated current (A)	Applicable wire (AWG/MCM) <sup>Note</sup>		Rated current (A)	Applicable wire (AWG/MCM) <sup>Note</sup>		
screw type	raised type	Single wire		Stranded wire	Single wire		Stranded wire					
TTGM 203	TTGM 20U3	600	20	20 to 14 (0.5 to 2.5mm <sup>2</sup> )	20 to 14 (0.5 to 2.5mm <sup>2</sup> )	15	20 to 14	20 to 14	15	20 to 14		
TTGM 2035	TTGM 20U35	600	20	20 to 14 (0.5 to 2.5mm <sup>2</sup> )	20 to 14 (0.5 to 2.5mm <sup>2</sup> )	15	20 to 14	20 to 14	15	20 to 14		
TTGM 40	TTGM 40U	600	40	18 to 10 (0.75 to 6mm <sup>2</sup> )	18 to 10 (0.75 to 6mm <sup>2</sup> )	30	18 to *10	18 to *10	30	18 to *10		
						25	18 to 12	18 to 12				

Notes:

The table above is based on connection to the copper bare wire and the crimp terminal. The applicable wires with \* indicates connection to the crimp terminal only. Use UL standard parts and CSA standard parts for crimp terminal. Be careful for the following points:

- Connection to crimp terminal: Use the crimp terminal with insulated coating or insulate the bare crimp terminal with sleeve, tube or tape.
- Connection to two bare wires: Connect the wire with the same size and type (single wire or stranded). Do not connect the wires with different sizes and types.

Line-up

Clutch Lock Terminal Blocks

PLC Interface Terminal Blocks

Rail Type Terminal Blocks

Assembly Terminal Blocks

Special Purpose Terminal Blocks

Terminal Block Accessories