

# ZET

## Product Image

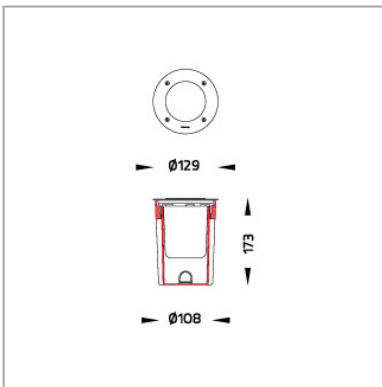


## Project Data

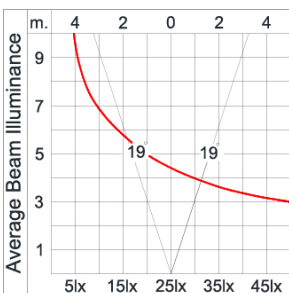
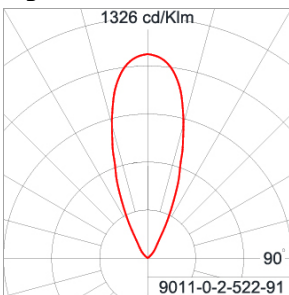
Project: \_\_\_\_\_  
Location: \_\_\_\_\_  
Date: \_\_\_\_\_  
Remarks: \_\_\_\_\_  
Approve by: \_\_\_\_\_

Application Type: INGROUND UPLIGHTER  
Product Name: ZET1 - Clear  
Ordering Code: 9011-0-2-522-91  
Lamp Type: LED  
Socket: N/A  
Watt: 8.6 W(350mA)  
Lumen: 1000 lm  
Beam: 38°  
Kelvin: 2700 K

## Dimension



## Light Distribution



\*Due to the constancy of product development,  
we reserve the right to alter all specification  
without prior notice.

# ZET

## Specification

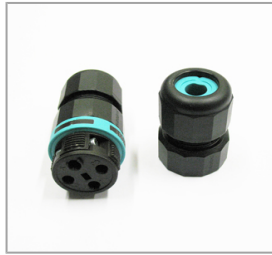
IEC Standard	IEC 60598-1 General Requirement IEC 60598-2-13 Ground Recessed Luminaires
Protection	IP67 Class III
IK Rating	Protection against mechanical impact IK10 on body and optical part.
Luminaires Body Housing	High-pressure Die Cast Aluminium alloy body and components. Front cover in 316 stainless steel brush finished. Recessed housing made of GFR polymer. Small vehicles can drive over the luminaire at low speed (maximum 20kgm/hour). Withstand maximum load 1,000 kgs.
Coating Process	Nano Ceramic surface conversion, resistant to corrosive environment. Luminaire primarily coated with epoxy resin and top coated with UV stabilized polyester powder and cured in digital temperature controlled chamber at 200°C.
Diffuser	Impact resistant safety tempered glass cover. Able to withstand the temperature up to 250°C. Glass flushes to the front cover, no accumulation of dust and water.
Gasket	Weather resistant silicone gasket. Working temperature -40°C to +200°C.
External screws	Marine grade 316 stainless steel screw.
Cable Entry	Cable entry protected by M16 cable gland. To be used with H05RN-F/ H07RN-F cable with 5-10mm. diameter
LED	High efficiency LED module from world renowned manufacturer. Assembled on MCPCB and mounted on to heat conductive material The whole systems tested to be operated under maximum ambient environment up to +40°C.
Driver	Driver is not included and has to be ordered separately.
Pre-wired cable	Pre-wired with 2x1.0sqmm. H07RN-F neoprene cable. IMQ approved. Equipped with anti-humidity kit.
Caution	Installation work has to be carried on according to the enclosed installation manual. The water drainage system must be tested to ensure that it is sufficiency and efficiency.

# ZET

## Accessories



Ordering Code: 9-0902-00  
IP68 watertight connecting device for through wiring. (To be used with a deeper ground recess housing)



Ordering Code: 9-0903-00  
IP68 Water Tight Connecting Device Cable Diameter 7 - 12mm.



Ordering Code: 9-0904-00  
Gel-Filled IP68 connector for through wiring. Cable Diameter 6.5 - 12mm. (To be used with a deeper ground recess housing).



Ordering Code: 9-0905-00  
Gel-Filled IP68 Connector Cable Diameter 8 - 10mm.



Ordering Code: 9-0907-00

IP68-Series-Wiring-LED-Distribution-Box-for-1-3-Luminaires. (To be used with a deeper ground recess housing).



Ordering Code: 9-0113-01

Honey Comb Louver for LED



Ordering Code: 9-0404-00

Deeper ground recess housing. Provides more space for transformer/driver box



Ordering Code: 0275-0-9-000-01

LED Constant Current Driver 350mA 1-15W. In IP67 GFR Polymer Box