

# SIROCCO

## Product Image

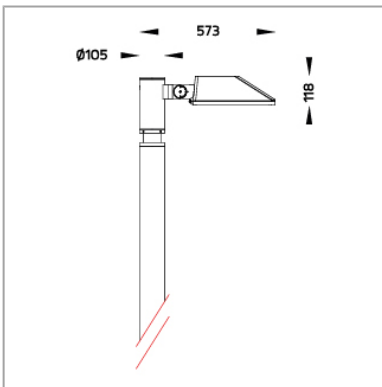


## Project Data

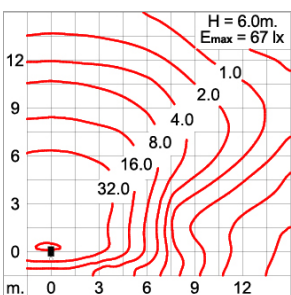
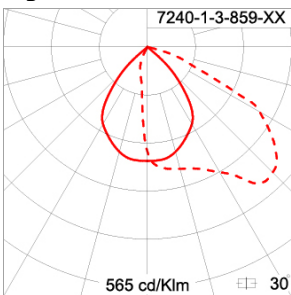
Project: \_\_\_\_\_  
 Location: \_\_\_\_\_  
 Date: \_\_\_\_\_  
 Remarks: \_\_\_\_\_  
 Approve by: \_\_\_\_\_

Application Type: AREA LIGHT  
 Product Name: Small SIROCCO – Area Light / Asymmetric Single Sided  
 Ordering Code: 7240-1-3-859-XX  
 Lamp Type: LED  
 Socket: N/A  
 Watt: 73 W  
 Lumen: 7900 lm  
 Beam: Asymmetric  
 Kelvin: 3000 K

## Dimension



## Light Distribution



\*Due to the constancy of product development,  
 we reserve the right to alter all specification  
 without prior notice.

# SIROCCO

## Specification

IEC Standard	IEC 60598-1 General Requirement IEC 60598-2-1 Fixed Luminaires
Protection	IP65 Class I
IK Rating	Protection against mechanical impact IK08 on body and IK07 optical part.
Luminaires Body Housing	High-pressure Die Cast Aluminium alloy body and components. Extruded Aluminium S6063 alloy body with low copper content.
Coating Process	Nano Ceramic surface conversion, resistant to corrosive environment. Luminaire primarily coated with epoxy resin and top coated with UV stabilized polyester powder and cured in digital temperature controlled chamber at 200°C.
Diffuser	Impact resistant safety tempered glass cover. Able to withstand the temperature up to 250°C.
Reflector	High performance CNC forming aluminium reflector sheet
Adjustable Optic	Adjustable aiming unit through graduated scale.
Gasket	Post-cured treated silicone gasket. Temperature and weather resistant. Working temperature -40°C to +200°C.
External screws	External screws are in stainless steel with protection grease.
Cable Entry	Cable entry protected by weather proof grommet. To be used with HO5RN-F/ HO7RN-F cable with 7-10mm. diameter
LED	High efficiency LED module utilized chips from world renowned manufacturer. Assembled on MCPCB and mounted on to heat conductive material. The whole systems tested to be operated under maximum ambient environment up to +40°C.
Driver	High quality constant current LED driver. Conform to safety standard and electromagnetic compatibility standard.
Internal wire	Tinned copper conductor with silicone insulated internal wire. IMQ approved. Working temperature -40°C to +180°C
Terminal Block/ Connector	Terminal block in GFR PA6.6 for cable with cross section up to 2.5 sqmm. VDE approved. Class1 luminaire provided with the earth connection.
Caution	Installation work has to be carried on according to the enclosed installation manual.
Color	Black [replace the last 2 digits of ordering code with O1] Graphite [replace the last 2 digits of ordering code with O2] Dark Gray [replace the last 2 digits of ordering code with O3] Aluminium Silver [replace the last 2 digits of ordering code with O4] White [replace the last 2 digits of ordering code with O6]

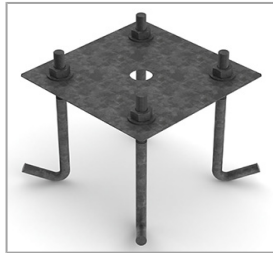
# SIROCCO

## Accessories



Ordering Code: 9-2020-00

Anchor Bolt Kit for Aluminium Pole



Ordering Code: 9-2023-00

Anchor Bolt Kit for Galvanized Steel Pole (for Diameter 102mm.)



Ordering Code: Please contact Sales Representative  
Straight Cylindrical Extruded Aluminium Pole



Ordering Code: Please contact Sales Representative  
Straight Cylindrical Hot-Dipped Galvanized Steel Pole