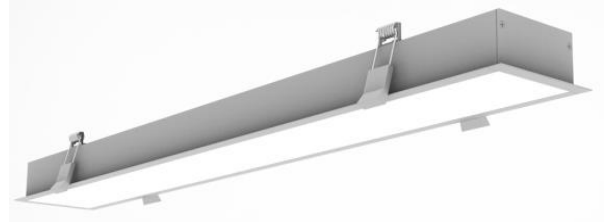




LED LINEAR LIGHT 10W

APPLICATION/DESCRIPTION

- * NEW DESIGN OR REPLACE OLD LAMP TO SAVING ENERGY AND LONG DURATION TIMES



SPECIFICATION

BODY MATERIAL	: ALUMINUM
INPUT VOLTAGE	: 180-260 VAC
LED CHIP	: EPISTAR
POWER	: 10W
LUMINOUS FLUX	: 950-1000lm
EFFICACY	: 100lm/W
COLOR RENDERING INDEX	: >80
LED COLOR TEMPERATURE	: 2700K / 4000k / 6000k
VIEW ANGLE	: 120°
THDi	: 15%
POWER FACTOR	: >0.95
WORKING TEMPERATURE	: -10° - 50°C
LIGHTING SOURCE LIFE	: 30,000 hrs.
COVER	: MILKY
FINISH COLOR	: WHITE , BLACK , Alu. SILVER

STANDARD

TIS. 1955-2551 LIGHTING AND SIMILAR EQUIPMENT:

RADIO DISTURBANCE LIMITS

ISO 9001 CERTIFIED FOR QUALITY CONTROL GUARANTEE

RoHS

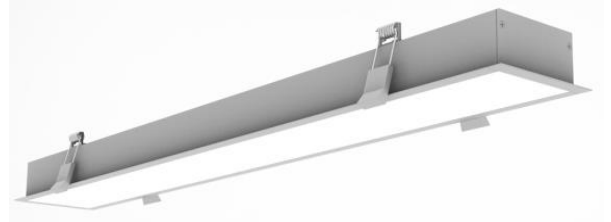
MODEL	LAMP		DIMENSION (mm.)			REMARK
	WATT	TYPE	W	L	H	
XZ-TEC001LIN03-10W	10	SMD	330	70	37	HOLE CUT : 320x60 mm.



LED LINEAR LIGHT 15W

APPLICATION/DESCRIPTION

- * NEW DESIGN OR REPLACE OLD LAMP TO SAVING ENERGY AND LONG DURATION TIMES



SPECIFICATION

BODY MATERIAL	: ALUMINUM
INPUT VOLTAGE	: 180-260 VAC
LED CHIP	: EPISTAR
POWER	: 15W
LUMINOUS FLUX	: 1450-1500lm
EFFICACY	: 100lm/W
COLOR RENDERING INDEX	: >80
LED COLOR TEMPERATURE	: 2700K / 4000k / 6000k
VIEW ANGLE	: 120°
THDi	: 15%
POWER FACTOR	: >0.95
WORKING TEMPERATURE	: -10° - 50°C
LIGHTING SOURCE LIFE	: 30,000 hrs.
COVER	: MILKY
FINISH COLOR	: WHITE , BLACK , Alu. SILVER

STANDARD

TIS. 1955-2551 LIGHTING AND SIMILAR EQUIPMENT:

RADIO DISTURBANCE LIMITS

ISO 9001 CERTIFIED FOR QUALITY CONTROL GUARANTEE

RoHS

MODEL	LAMP		DIMENSION (mm.)			REMARK
	WATT	TYPE	W	L	H	
XZ-TEC001LIN03-15W	15	SMD	330	70	37	HOLE CUT : 320x60 mm.



LED LINEAR LIGHT 20W

APPLICATION/DESCRIPTION

- * NEW DESIGN OR REPLACE OLD LAMP TO SAVING ENERGY AND LONG DURATION TIMES



SPECIFICATION

BODY MATERIAL	: ALUMINUM
INPUT VOLTAGE	: 180-260 VAC
LED CHIP	: EPISTAR
POWER	: 20W
LUMINOUS FLUX	: 1900-2000lm
EFFICACY	: 100lm/W
COLOR RENDERING INDEX	: >80
LED COLOR TEMPERATURE	: 2700K / 4000k / 6000k
VIEW ANGLE	: 120°
THDi	: 15%
POWER FACTOR	: >0.95
WORKING TEMPERATURE	: -10° - 50°C
LIGHTING SOURCE LIFE	: 30,000 hrs.
COVER	: MILKY
FINISH COLOR	: WHITE , BLACK , Alu. SILVER

STANDARD

TIS. 1955-2551 LIGHTING AND SIMILAR EQUIPMENT:

RADIO DISTURBANCE LIMITS

ISO 9001 CERTIFIED FOR QUALITY CONTROL GUARANTEE

RoHS

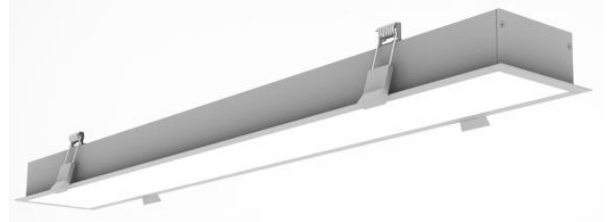
MODEL	LAMP		DIMENSION (mm.)			REMARK
	WATT	TYPE	W	L	H	
XZ-TEC001LIN03-20W	20	SMD	620	70	37	HOLE CUT : 610x60 mm.



LED LINEAR LIGHT 30W

APPLICATION/DESCRIPTION

- * NEW DESIGN OR REPLACE OLD LAMP TO SAVING ENERGY AND LONG DURATION TIMES



SPECIFICATION

BODY MATERIAL	: ALUMINUM
INPUT VOLTAGE	: 180-260 VAC
LED CHIP	: EPISTAR
POWER	: 30W
LUMINOUS FLUX	: 2900-3000lm
EFFICACY	: 100lm/W
COLOR RENDERING INDEX	: >80
LED COLOR TEMPERATURE	: 2700K / 4000k / 6000k
VIEW ANGLE	: 120°
THDi	: 15%
POWER FACTOR	: >0.95
WORKING TEMPERATURE	: -10° - 50°C
LIGHTING SOURCE LIFE	: 30,000 hrs.
COVER	: MILKY
FINISH COLOR	: WHITE , BLACK , Alu. SILVER

STANDARD

TIS. 1955-2551 LIGHTING AND SIMILAR EQUIPMENT:

RADIO DISTURBANCE LIMITS

ISO 9001 CERTIFIED FOR QUALITY CONTROL GUARANTEE

RoHS

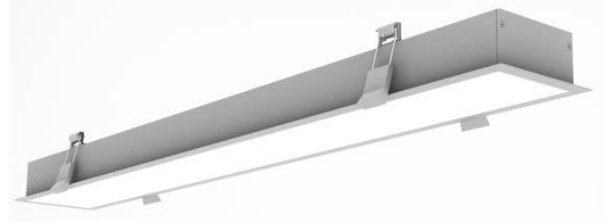
MODEL	LAMP		DIMENSION (mm.)			REMARK
	WATT	TYPE	W	L	H	
XZ-TEC001LIN03-30W	30	SMD	620	70	37	HOLE CUT : 610x60 mm.



LED LINEAR LIGHT 40W

APPLICATION/DESCRIPTION

- * NEW DESIGN OR REPLACE OLD LAMP TO SAVING ENERGY AND LONG DURATION TIMES



SPECIFICATION

BODY MATERIAL	: ALUMINUM
INPUT VOLTAGE	: 180-260 VAC
LED CHIP	: EPISTAR
POWER	: 40W
LUMINOUS FLUX	: 3900-4100lm
EFFICACY	: 100lm/W
COLOR RENDERING INDEX	: >80
LED COLOR TEMPERATURE	: 2700K / 4000k / 6000k
VIEW ANGLE	: 120°
THDi	: 15%
POWER FACTOR	: >0.95
WORKING TEMPERATURE	: -10° - 50°C
LIGHTING SOURCE LIFE	: 30,000 hrs.
COVER	: MILKY
FINISH COLOR	: WHITE , BLACK , Alu. SILVER

STANDARD

TIS. 1955-2551 LIGHTING AND SIMILAR EQUIPMENT:

RADIO DISTURBANCE LIMITS

ISO 9001 CERTIFIED FOR QUALITY CONTROL GUARANTEE

RoHS

MODEL	LAMP		DIMENSION (mm.)			REMARK
	WATT	TYPE	W	L	H	
XZ-TEC001LIN03-40W	40	SMD	915	70	37	HOLE CUT : 905x60 mm.