



LED STREET LIGHT SUPER SLIM

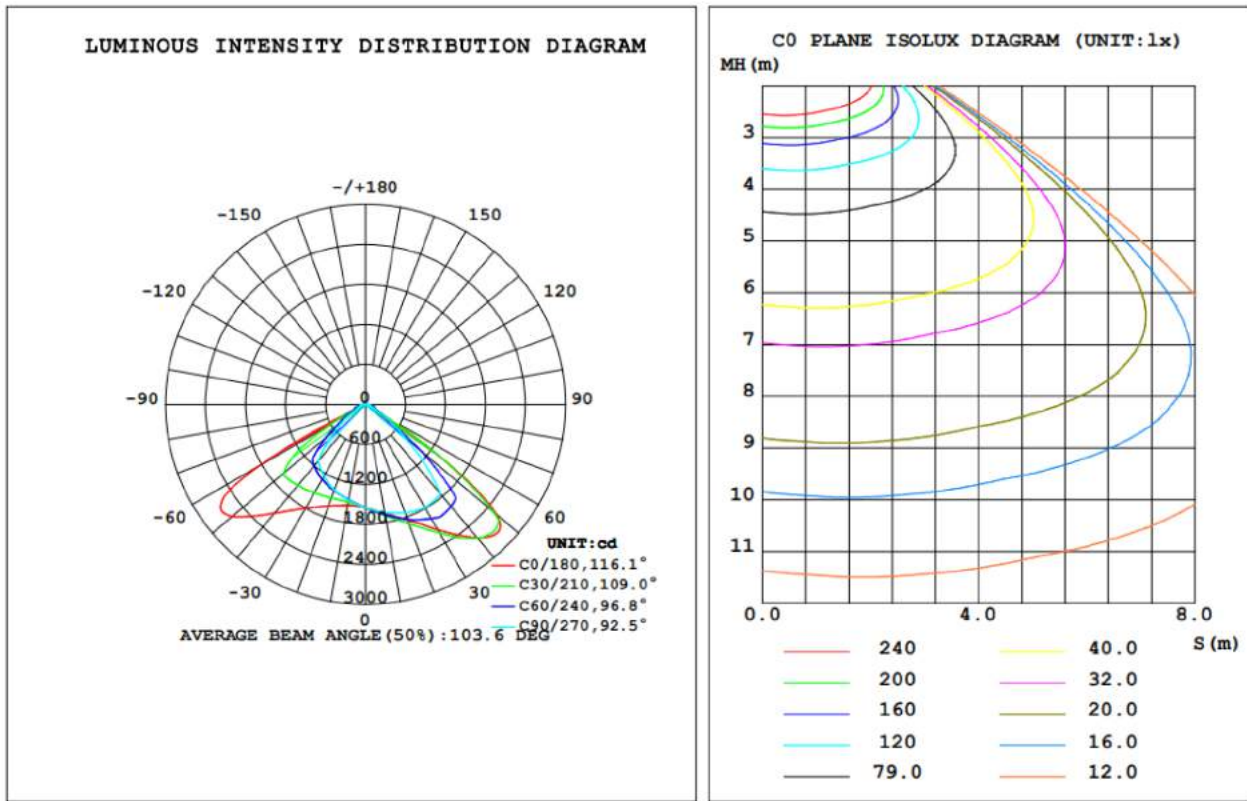
LED STREET LIGHT

- ▶ Aluminum
- ▶ 100LM/W
- ▶ IP65
- ▶ 2 years warranty
- ▶ Philips SMD2835



Model NO.	X-50W	X-100W	X-150W	X-200W
Size(mm)	164*55*404.7	190*77.5*509.1	220*75*625.3	250*71.5*678.2
Power(W)	50W	100W	150W	200W
Luminous Flux (lm)	5000	10000	15000	20000
Input Voltage	85-305V AC			
CCT(K)	2700-6500			
CRI	>80			
PF	>0.9			
Beam Angle	75°135 °			
Material	ADC12			
Working Temp.	-30 ° ~ 60 °			
Lifespan	35000			
Box Size(cm)	18*8*44	24*11*55	27*11*59	30*9*67
Carton Size (cm)	46*42*38	57*57*26	61*24*29	69*20*32
QTY/CTN	10	5	2	2

LUMINOUS INTENSITY DISTRIBUTION DIAGRAM



C Range: 0 - 360DEG
 C Interval: 5.0DEG
 Test Speed: HIGH
 Temperature:25.3DEG
 Operators:DAMIN
 Test Date:2019-05-04

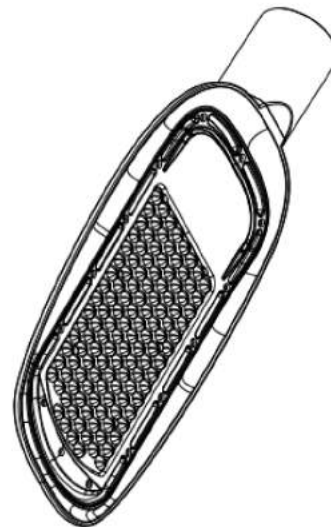
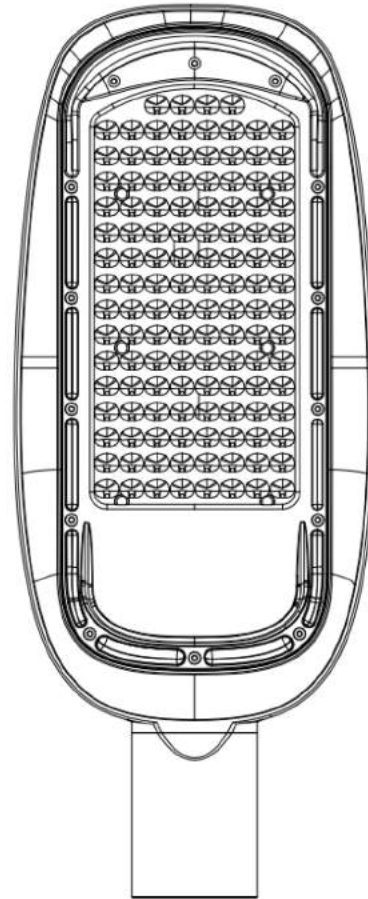
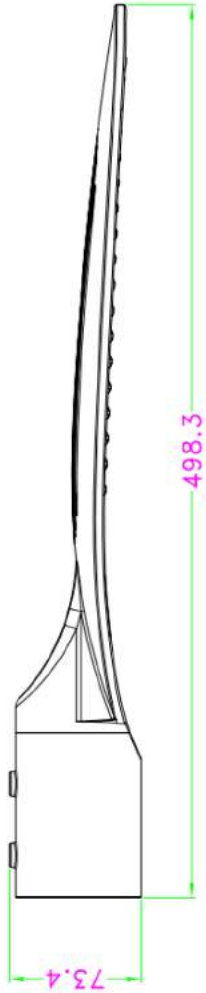
γ Range: 0 - 90DEG
 γ Interval: 0.5DEG
 Test System:EVERFINE GO-2000B_V1 SYSTEM V2.0.265
 Humidity:65.0%
 Test Distance:12.300m [K=1.0000]
 Remarks:

Application



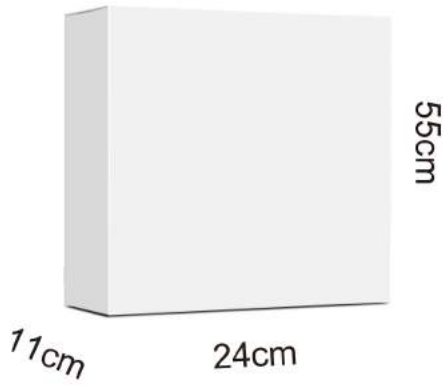
Diagram Example of 100W

RX01-100W



Package

1



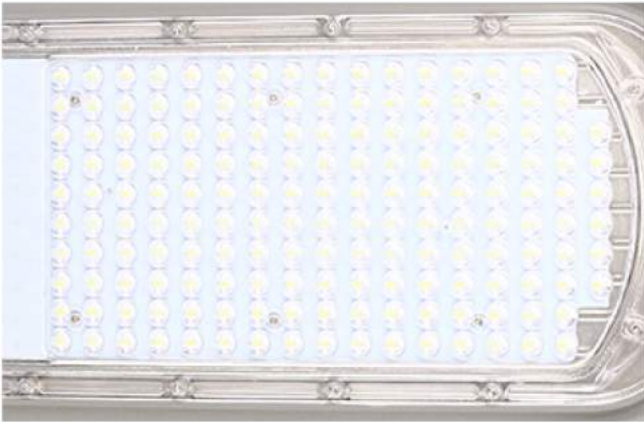
2



5PCS/CTN
G.W.:14KG

3



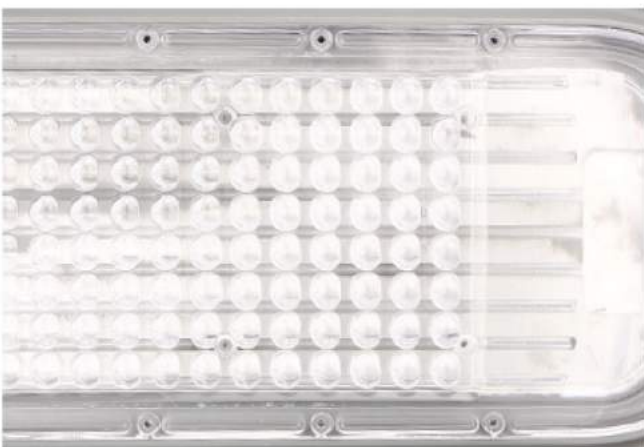


Chips

Phillips chips, high brightness
High Light efficiency, >100Lm/W
Ra>80

Housing

ADC#12 aluminum
High purity and density
Excellent heat dissipation



Optical Design

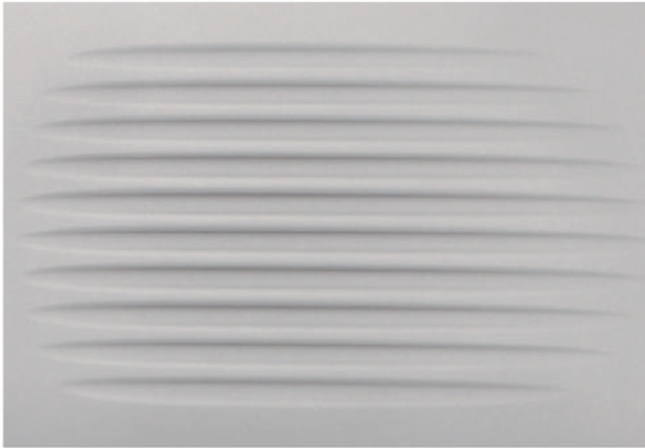
PC Lens

High transmittance
High light brightness
Low light decay

Outdoor Waterproof

fearless of the sun and rain



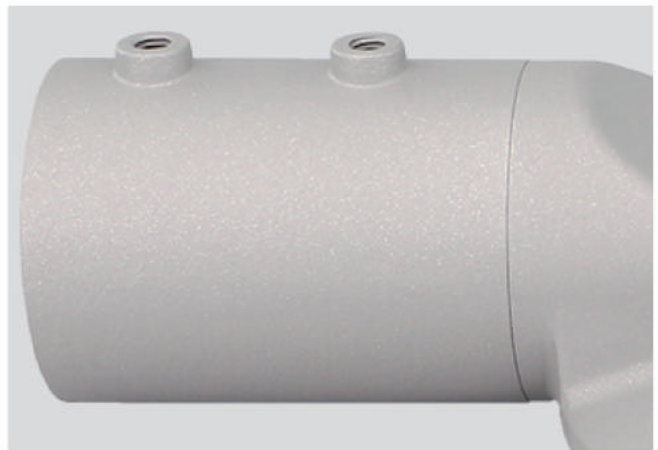


Streamline design

More beautiful appearance
No accumulation

Professional outdoor painting

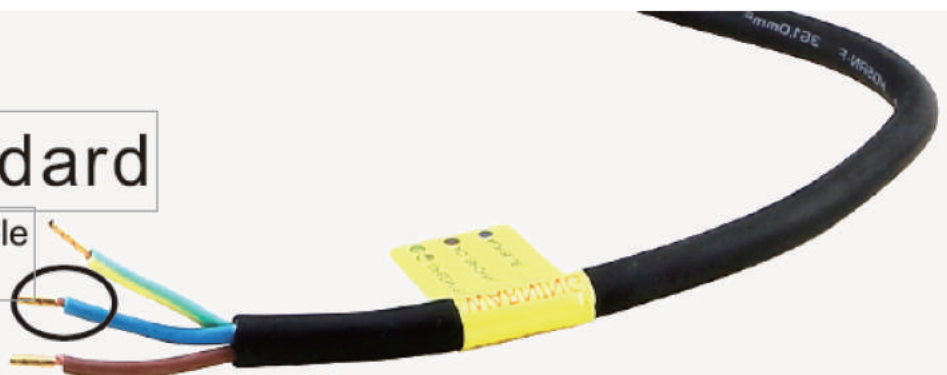
Anti-corrosion and anti-rusting



Rubber Cable

High Standard

CE standard VDE cable
H05RN-F3G0.75mm²





Quality Housing

ADC12 Aluminum
Excellent Waterproof Performance
High Purity & Density



Front



Back



Side

