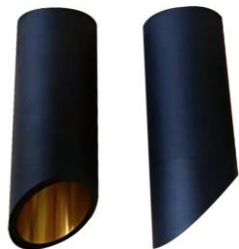


APPLICATION / DESCRIPTION

NEW DESIGN OR REPLACE OLD LAMP TO SAVING ENERGY AND LONG DURATION TIME



Specification

MODEL	LED DOWNLIGHT XZKMR
BODY MATERIAL	ALUMINUM
INPUT VOLTAGE	180-260 VAC 50Hz
LED CHIP	CREE
POWER	5W
EFFICACY	90-95 Lm/W
COLOR RENDERING INDEX	>90
LED COLOR TEMPERATURE	3000K-6500K
THDi	15%
POWER FACTOR	0.95
WORKING TEMPERATURE	0-45dg
LIGHTING SOURCE LIFE	50000Hrs
DRIVER	FOOKES

MODEL	POWER	CCT	CRI	BEAM ANGLE	INPUT LOLTAGE	DAIMENSION (MM)			MATERIAL	LED CHIP	DRIVER	PRICE
						DIAMATER	CUTTING	HEIGHT				
XZKMR205	5W	3000K-6500K	>90	30°	AC180-260V	60	-	200	ALUMINUM	CREE	FOOKES	฿930
XZKMR305	5W	3000K-6500K	>90	30°	AC180-260V	60	-	300	ALUMINUM	CREE	FOOKES	฿1,065
XZKMR605	5W	3000K-6500K	>90	30°	AC180-260V	60	-	600	ALUMINUM	CREE	FOOKES	฿1,305



LED Light source



Driver

