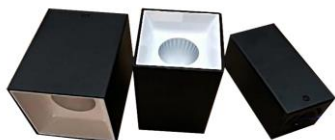


APPLICATION / DESCRIPTION

NEW DESIGN OR REPLACE OLD LAMP TO SAVING ENERGY AND LONG DURATION TIME



Specification

MODEL	LED DOWNLIGHT XZKMDS
BODY MATERIAL	ALUMINUM
INPUT VOLTAGE	180-260 VAC 50Hz
LED CHIP	CREE
POWER	12W, 18W, 25W
EFFICACY	90-95 Lm/W
COLOR RENDERING INDEX	>90
LED COLOR TEMPERATURE	3000K-6500K
THDi	15%
POWER FACTOR	0.95
WORKING TEMPERATURE	0-45dg
LIGHTING SOURCE LIFE	50000Hrs
DRIVER	FOOKES

MODEL	POWER	CCT	CRI	BEAM ANGLE	INPUT LOLTAGE	DAIMENSION (MM)			MATERIAL	LED CHIP	DRIVER	PRICE
						DIAMATER	CUTTING	HEIGHT				
XZKMDS12	12W	3000K-6500K	>90	45°	AC180-260V	76*76	-	150	ALUMINUM	CREE	FOOKES	฿975
XZKMDS18	18W	3000K-6500K	>90	45°	AC180-260V	96*96	-	150	ALUMINUM	CREE	FOOKES	฿1,275
XZKMDS25	25W	3000K-6500K	>90	45°	AC180-260V	116*116	-	150	ALUMINUM	CREE	FOOKES	฿1,875



LED Light source



Driver

