



JOIN ONE HY200

AI Camera with Auto Framing
& Voice Tracking

Oh! There you are





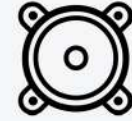
Voice Tracking



4K ePTZ Camera



6 Array Mic



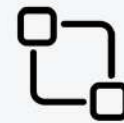
Built-in Speaker



Auto Framing



120°Wide FOV



Strong Compatibility



USB HID

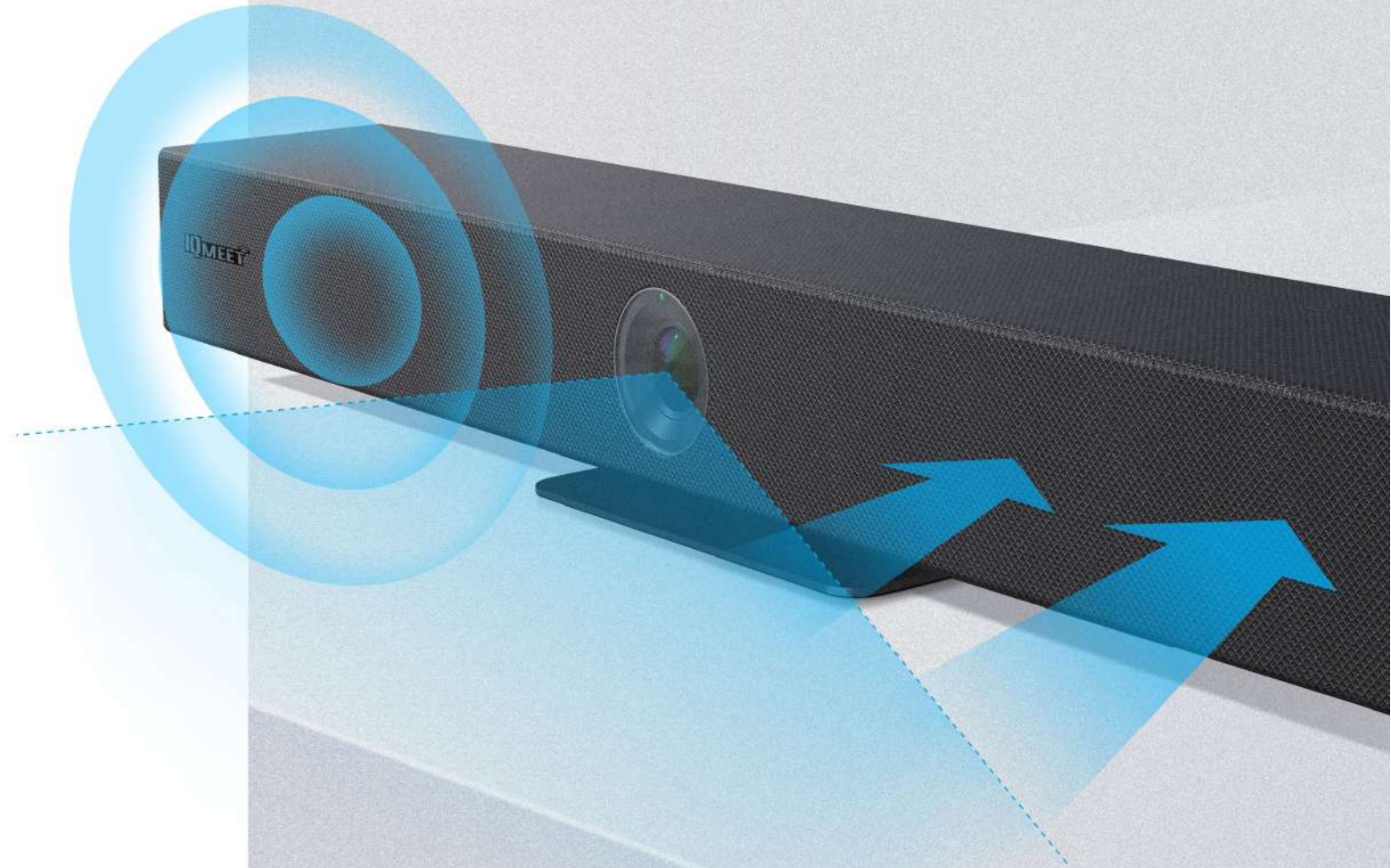
I Can Find You

By voice tracking and sound source localization, the camera can automatically switch focus between the different speakers with automated and smooth camera panning.



3 in 1 Design

Adopt a compact 3 in 1 design that integrates camera, microphone and speaker, only one device can start video conferencing immediately.



Camera, Capture in Details

- 8MP | Optical Lens | ePTZ 5x Digital Zoom

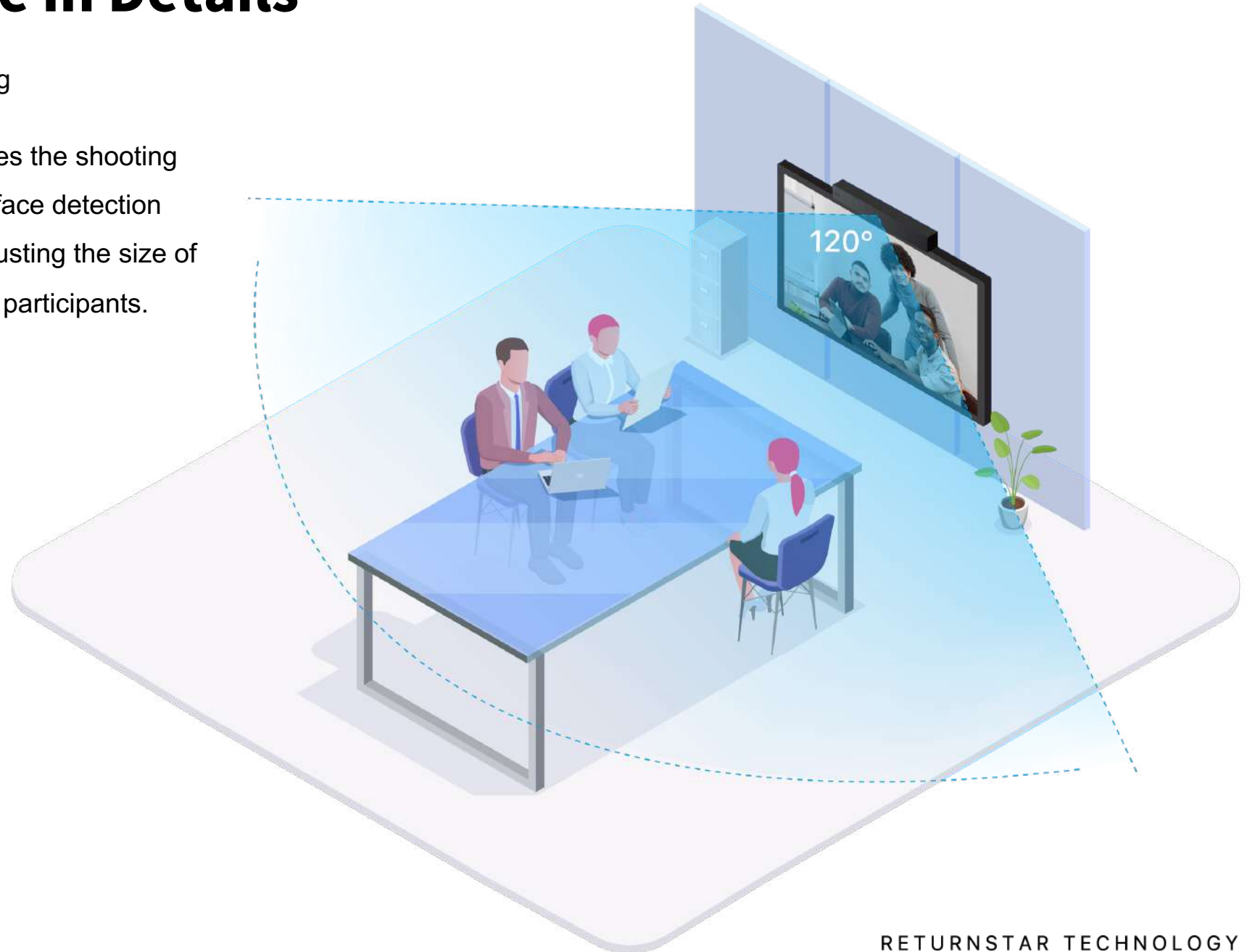
8 megapixel high-quality CMOS image sensor with optical lens, presenting realistic ultra HD videos and vividly showing the expressions and actions of each person.



Camera, Capture in Details

- 120° Wide FOV | Auto Framing

120° super large viewing angle ensures the shooting coverage of the full room. The built-in face detection algorithm for ideal auto-framing by adjusting the size of the picture according to the number of participants.





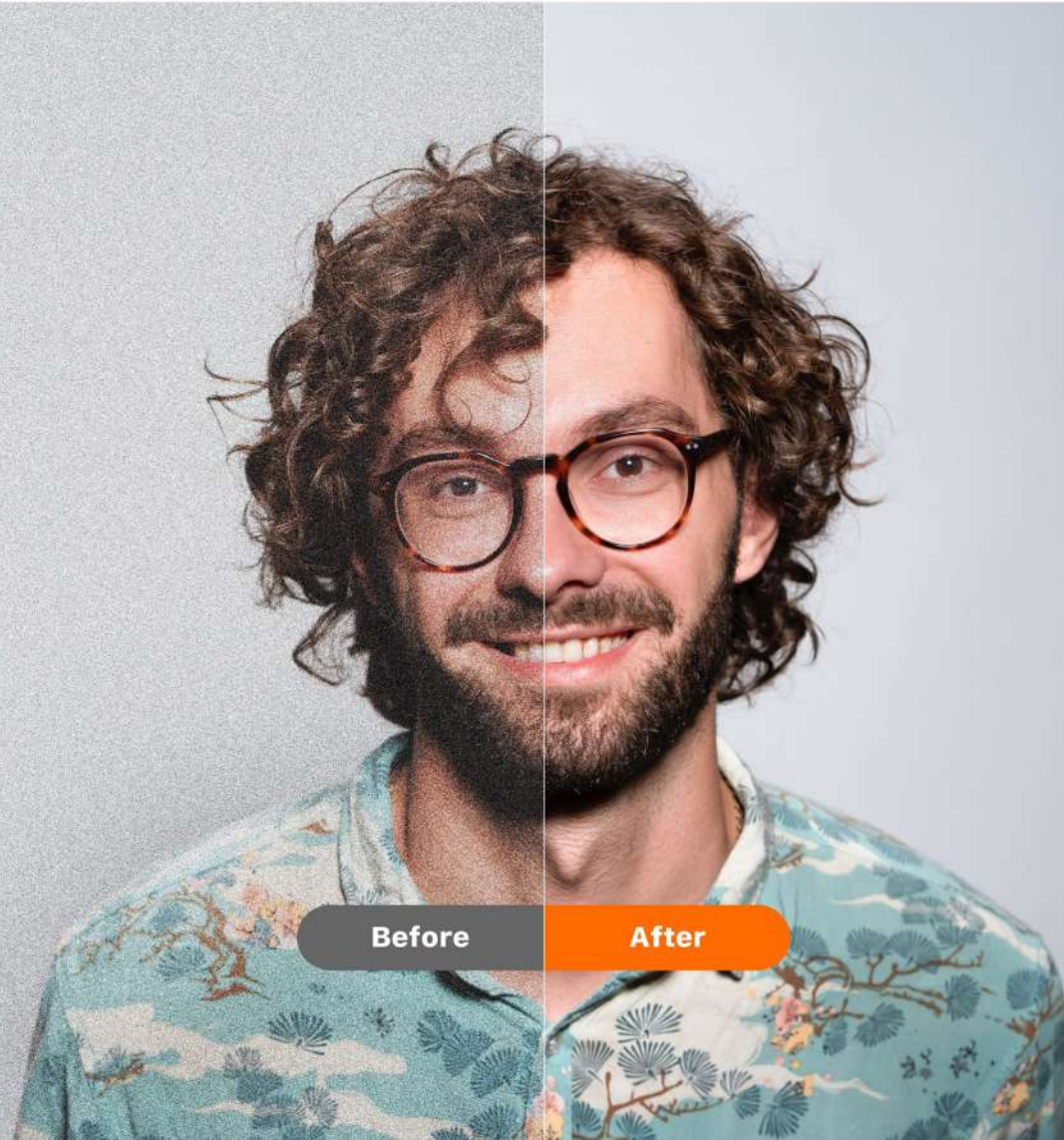
Upgraded Sound Quality

- 6 Array Mics / 7W Speaker

Audio Processing supports AEC, AGC and ANS technology as well as 6 meters voice pick-up range. Enhancing the audio experience to a greater level.

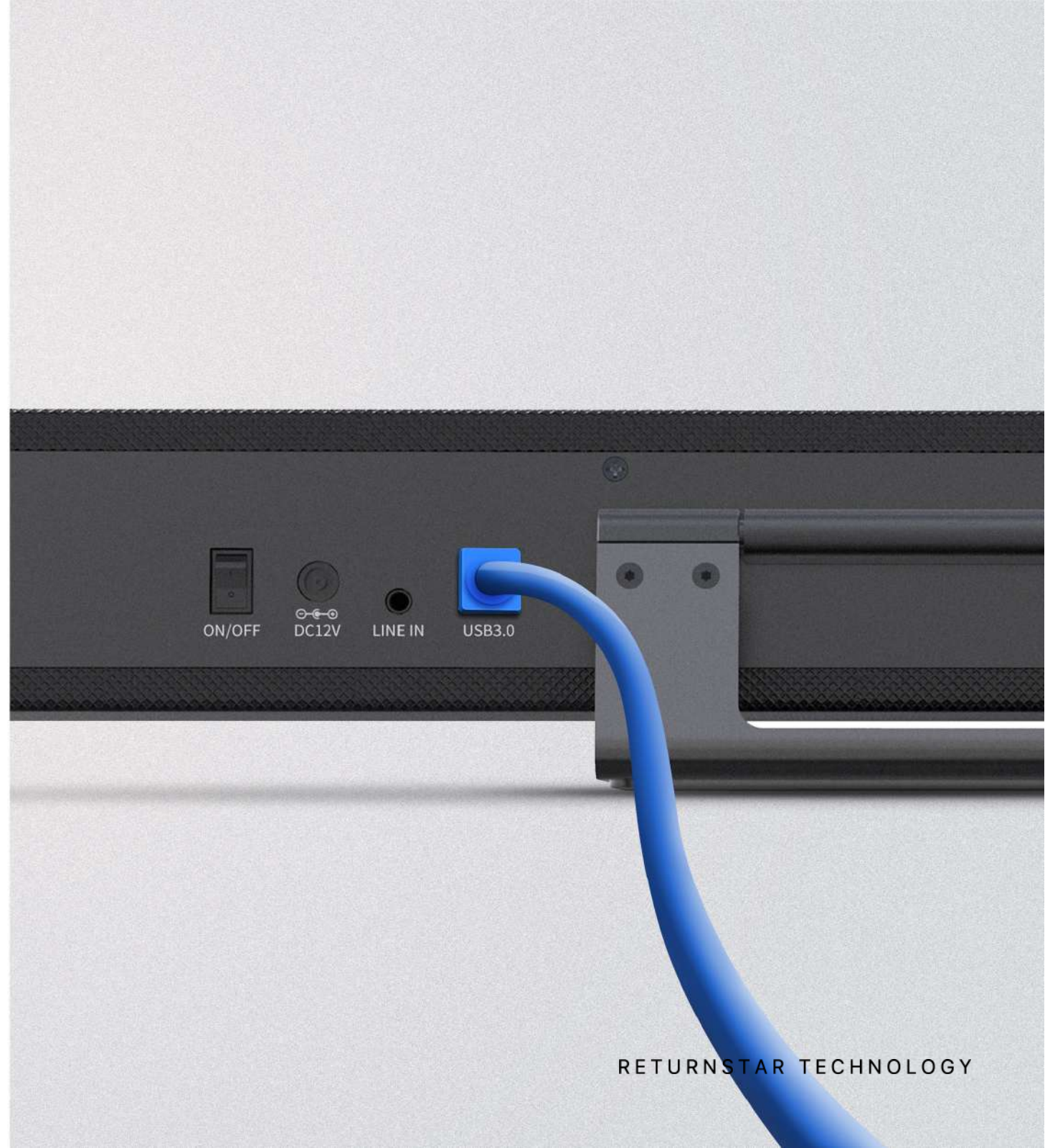
Low Noise and High SNR

CMOS effectively ensure high SNR of camera video. Advanced 2D/3D noise reduction technology is also used to further reduce the noise, while ensuring image sharpness even in low illumination.



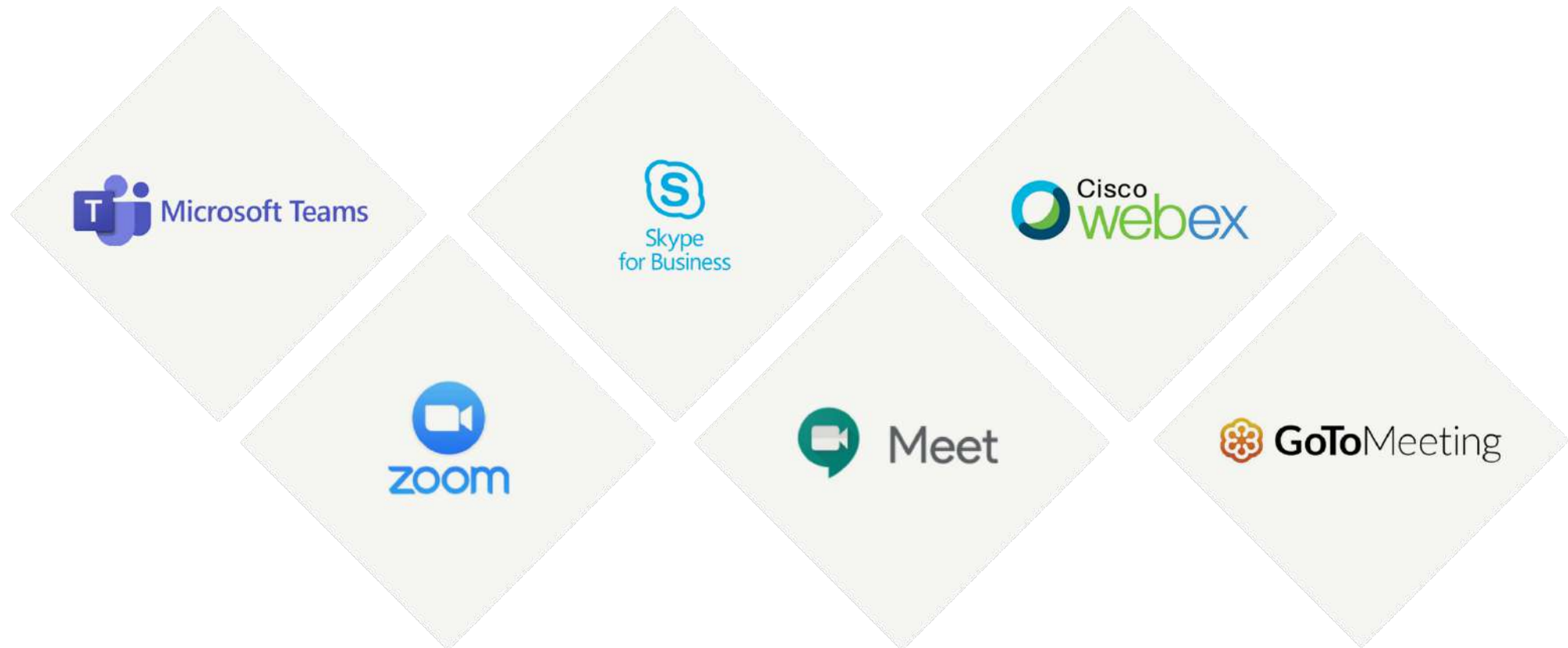
Simple Connectivity

Easy to install and use with USB plug and play connection. No extra adapter or driver needed.



Strong Compatibility

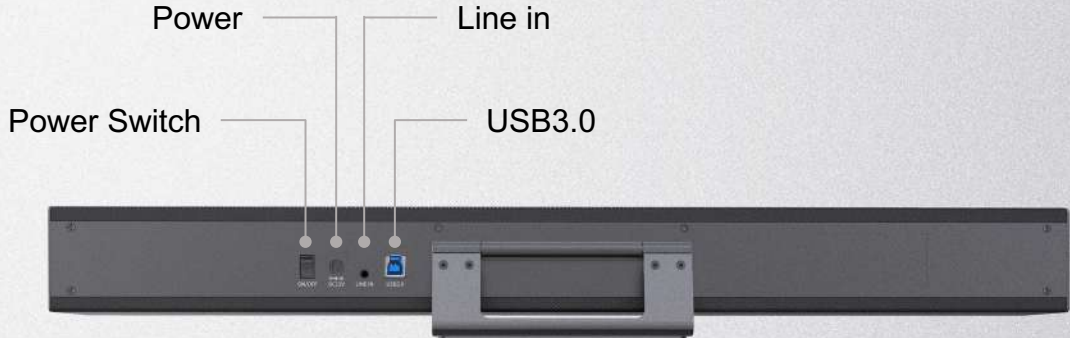
Compatible with the mainstream cloud video platforms including Microsoft Teams, Zoom, Skype, Google Meet, Webex, GoTo meeting, etc.



Product Overview



● Front view



● Back view

Recommend Products



IQTouch T900 Series



IQPodium



IQSpeakerphone S330

THANKS

