

THAI POLYMER SUPPLY

- ⚙️ **ENGINEERING PLASTICS**
- ⚙️ **CONVEYOR & COMPONENT**
- ⚙️ **PRINTER**
- ⚙️ **FLUID SYSTEMS**
- ⚙️ **AIR SUPPLY**
- ⚙️ **INSULATION**



OVERVIEW

WE OFFER HIGH QUALITY PRODUCTS AND SERVICE TO SATISFY YOUR NEED.

HISTORY

In the year 1982 Thai Polymer Supply Co.,Ltd was established as an Engineering Plastics importer located at 406 Sukhumvit55 (Soi Thonglor) Sukhumvit Rd., Klongton Nue, Wattana, Bangkok 10110 with the capital 49 million baht.

At the present time, we are the leading engineering plastics importer in Thailand with the capital 200 million baht , 16 buildings (used area more than 8,640 s.q.m.) with the support from our 700 staff. The sales more than 1,300 million baht per year.

We are committed to meet the needs of our customers and to continually strive to offer them better solutions to the engineering plastics problems and to give technical support for the wide range of products that our sub-companies provide. We have 13 branches through out Thailand to better serve the need to our customers. We have also divided our company into six marketing divisions to be more specific with our product range as follows :-

- Engineering Plastics
- Conveyor Component
- Printer
- Fluid Systems
- Air Supply
- Insulation

BRANCH

THAI POLYMER SUPPLY BRANCH

1. Rayong Branch
2. Leam Chabang Branch
3. Prachuap Khiri Khan Branch
4. Hatyai Branch
5. Surat Thani Branch
6. Khon Kaen Branch
7. Nakhon Ratchasima Branch
8. Sara Buri Branch
9. Nakornpathom Branch
10. Chiang Mai Branch
11. Navanakorn Branch
12. Prachinburi Branch
13. Samut Sakhon Branch

Our product range is sourced from Asia, Europe, North America and South Africa, based on quality and the customer requirements. Most of the supplied products are the brand leaders in their fields. We have extensive warehouse facilities enabling us to carry the stocks to meet our customer's need. We have in house machining facilities and test R&D department. We work as a team providing the best solutions for our customers with quality products and services to meet the customer need. We are continually upgrading the knowledge of our sales team with the latest information and technology. The inspiring vision behind Thai Polymer Supply's success still remains unchanged and will always be.

“YOUR SATISFACTION, OUR SERVICE”



ENGINEERING PLASTICS

- Engineering Plastics.
- Advance Engineering Plastics.
- We machine finish to our specification.

TEL : 02-750-4852-8 #102-109 FAX : 02-312-1781
Email : plastics@thaipolymer.co.th



- | | | | |
|---|---|--|--|
| <input checked="" type="checkbox"/> PTFE | <input checked="" type="checkbox"/> P.P. | <input checked="" type="checkbox"/> PE FOAM | <input checked="" type="checkbox"/> CDM |
| <input checked="" type="checkbox"/> PAG (Nylon) | <input checked="" type="checkbox"/> PC | <input checked="" type="checkbox"/> PVC | <input checked="" type="checkbox"/> TORLON |
| <input checked="" type="checkbox"/> Cast Nylon | <input checked="" type="checkbox"/> PVDF | <input checked="" type="checkbox"/> PU | <input checked="" type="checkbox"/> PEEK |
| <input checked="" type="checkbox"/> Pe Nylon | <input checked="" type="checkbox"/> HDPE | <input checked="" type="checkbox"/> ABS | <input checked="" type="checkbox"/> ULTEM |
| <input checked="" type="checkbox"/> POM | <input checked="" type="checkbox"/> PE500 | <input checked="" type="checkbox"/> BAKELITE | <input checked="" type="checkbox"/> ETC. |
| <input checked="" type="checkbox"/> PET | <input checked="" type="checkbox"/> UHMWPE (PE1000) | <input checked="" type="checkbox"/> EPOXY | |

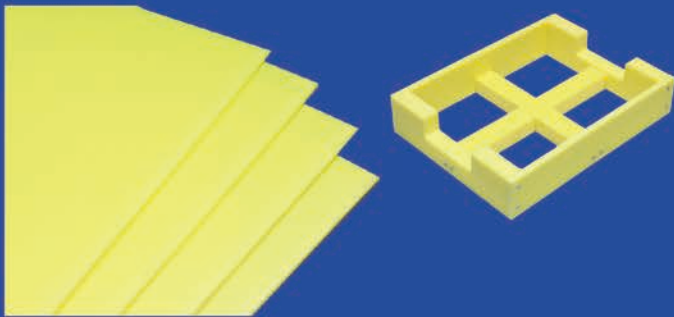


POLYETHYLENE FOAM (PE FOAM)

DURAWOOD / AICELLWOOD 40 / AICELLWOOD CONDUCTIVE

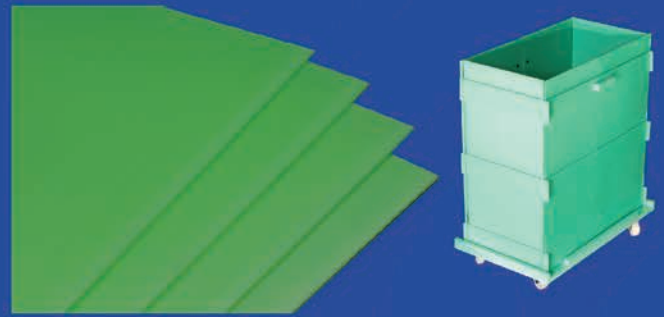
• DURAWOOD

รับน้ำหนักได้ดี ทนต่อสารเคมี ผิวสัมผัสไม่แข็งกระด้าง
Chemical Resistance Excellent Hardness



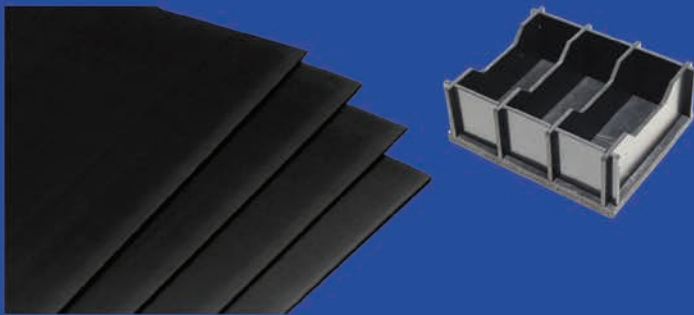
• AICELLWOOD 40

น้ำหนักเบา แข็งแรงไม่แตกหัก ไม่ดูดซับน้ำ น้ำมัน
Light Unbreakable Not Adsorption



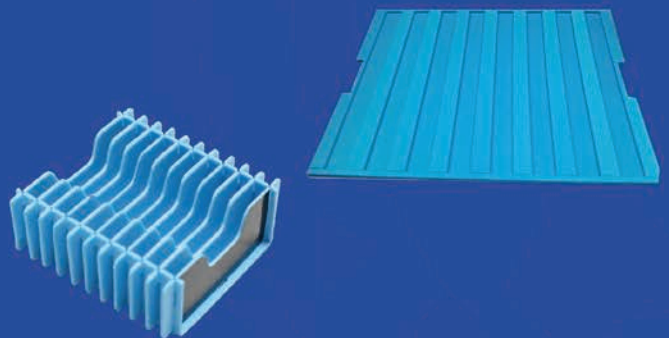
• AICELLWOOD CONDUCTIVE

ไม่เป็นตัวนำไฟฟ้า ไม่เกิดไฟฟ้าสถิต ขึ้นรูปได้ง่าย
Surface Resistivity Spectrum From 10K to 10M



• POLYPROPYLENE (PP FOAM)

น้ำหนักเบา/นุ่ม นิยมใช้แทน Future Board

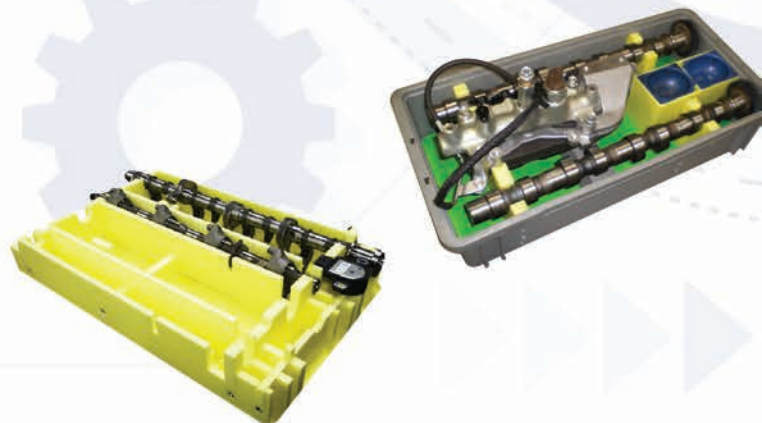


แผ่นโฟมโพลีเอทิลีน (PE FOAM) ถูกนำมาใช้เป็นวัสดุป้องกัน
ในการขนส่งในอุตสาหกรรมชิ้นส่วนยานยนต์ เพื่อทดแทนแผ่น
พลาสติกลูกฟูก แผ่นไม้อัด และแผ่นขึ้นรูป PE ทั่วไป มานานกว่า
30 ปี เพื่อลดความเสี่ยงการเกิดความเสียหายจากระบบขนส่ง
ของชิ้นส่วนรถยนต์ (Damage-free) เช่น TOYOTA, NISSAN,
HONDA สามารถนำมาใช้เป็นวัสดุกันกระแทก ในอุตสาหกรรมอื่นๆ
ได้อย่างมีประสิทธิภาพ

Tel: 02-750-4852-8 # 646 - 647

Fax: 02-312-1781

Email: pefoam@thaipolymer.co.th





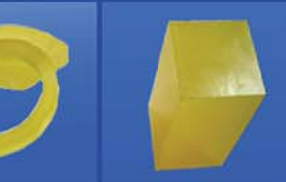
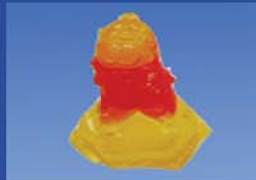
HIGH PERFORMANCE POLYURETHANE

- PU 15-95 Shore A , PU 75 Shore D
- Rod, Tube and Sheet
- Machining part
- Fork-Lift tyres
- Heavy duty caster wheels
- Screening for Mining and Cement industry
- Bushes, Bearing, Flexible coupling
- Moulds for concrete
- Roller
- Made to order

Tel: 02-706-3743-45

Fax: 02-706-3746

Email: urethane@thaipolymer.co.th



PTFE ENGINEERING PLASTIC

Value seats and Value in gas cylinders, Envelope Gaskets, seal rings, piston rings (hydraulics) and compressor, bearing and bearing pads, Chemical equipment, etc.line

Tel: 02-752-5996

Fax: 02-750-7294

Email: ptfe@thaipolymer.co.th



TACONIC

Finding a better way

- PTFE - GLASS FABRIC
- TAC - TAPE
- SILICONE RUBBER COATED FABRICS
- OPEN - MESH PTFE GLASS FABRIC & KEVLAR
- FUSING PRESS BELTS
- TEXTILE DRYER BELTS
- CONVEYOR BELTING FABRICS
- HEAT SEALING BELTS
- GLASS FABRIC & SILICONE BAKING SHEET
- TACSIL / TACNOSIL CARRIER TAPE
- USAGE : RELEASE, BELT AND TAPE MATERIAL FOR FOOD, PLASTIC, PACKAGING, DYING.
- CHARACTERISTICS :
 - SUPERIOR HEAT AND COLD RESISTANCE (-73C - 260C)
 - CHEMICALLY INERT
 - LOW FRICTION, NON STICK, SMOOTH SURFACE.

SMT PROCESS



FOOD APPLICATION



FUSING PRESS BELTS



TEXTILE DRYER BELTS



SYSTEM PLAST™



Interactive catalog
connection

- Our range
- Stainless steel flat top chains
- Plastic resin flat top chains
- Chains with friction surface
- Chains with accumulation rollers
- Gripper chains
- Multiflex chains
- Dual magnetic corner tracks
- Modular belts
- Drive sprockets
- Idler wheels
- Corner discs
- Component



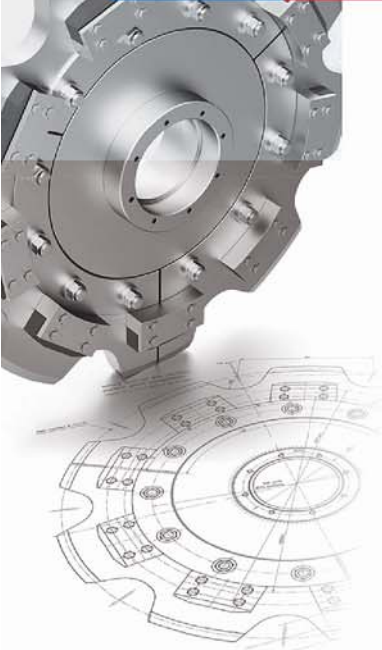
Tel: 02-750-4852-8, 02-730-1240-7 #163-172
E-mail: conveyor@thaipolymer.co.th



CONVEYOR COMPONENT



KÖBO
The Chain People



Working hand in hand with the **FOOD INDUSTRY**

BEVERAGE AND BOTTLING
QUALITY IS A MATTER OF EXPERIENCE.

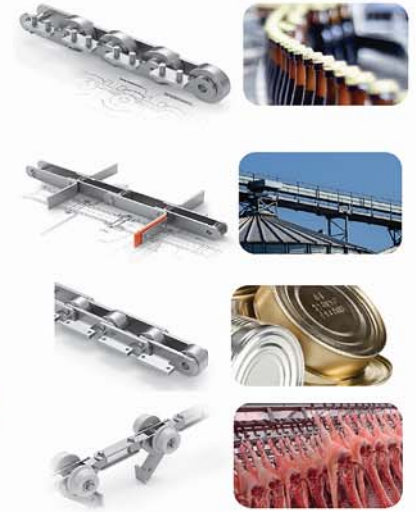
TROUGH CONVEYOR CHAINS
SIMPLE AND RELIABLE QUALITY.

STERILIZER CHAINS
STATE-OF-THE-ART RELIABILITY.

SLAUGHTERHOUSE CHAIN TECHNOLOGY
CLEANER SOLUTIONS MADE BY KÖBO.

SPROCKETS

SETTING YOUR BUSINESS IN MOTION. _____, BUSINESS KEEPS ON MOVING.



WirE Mesh

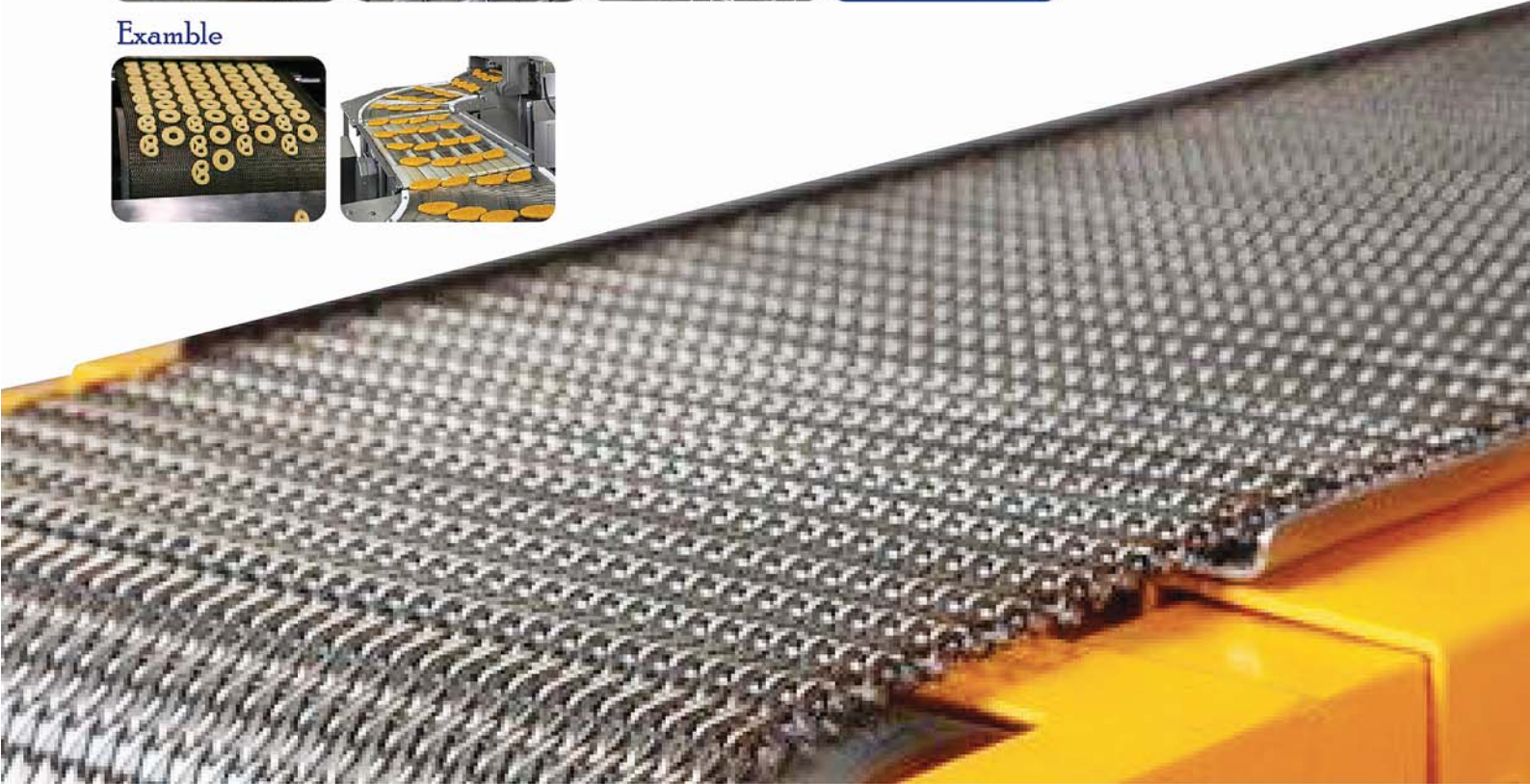
Contact:

Tel: 02-750-4852-8, 02-730-1240-7 #163-172

E-mail: conveyor@thaipolymer.co.th



Example





EMERSON™
Industrial Automation



**Drives that give you
FUNCTIONALITY CHOICE**

UNIDRIVE M

Dedicated Manufacturing Automation Drive

Choose the drive that gives you the right functionality level for your Manufacturing Automation application

M100 M200 M300 M400 M600 M700 M800
0.25 kW - 1.2 MW (0.33 hp - 1600 hp)
100 V | 200 V | 400 V | 575 V | 690 V

DuPont™ Vespel®

COMPONENTS FOR MOLDING AND EXTRUSION EQUIPMENT

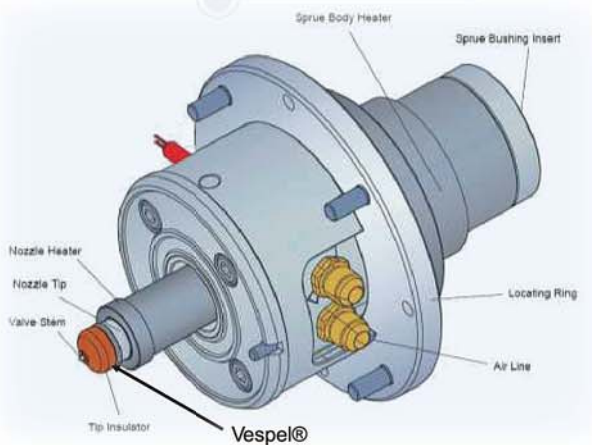


The miracles of science™

E & MH

Application: Molding

Tip Insulator: Vespel® SP-1

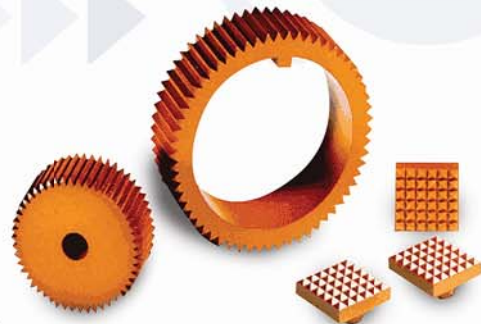


Benefits:

- Thermal Insulation - High productivity
- Thermal Resistance - Long Life



Application: Glass handling process



Application

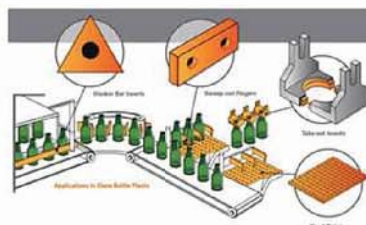
SP-1, SP-21, PS-22, and SCP-5050
Glass handling tool

Benefits

Have difficulty having crack and crease on glass
Reduce cost by long life parts

Why DuPont™ Vespel®?

Vespel® can be used on 540
Easy machining and shock resistance

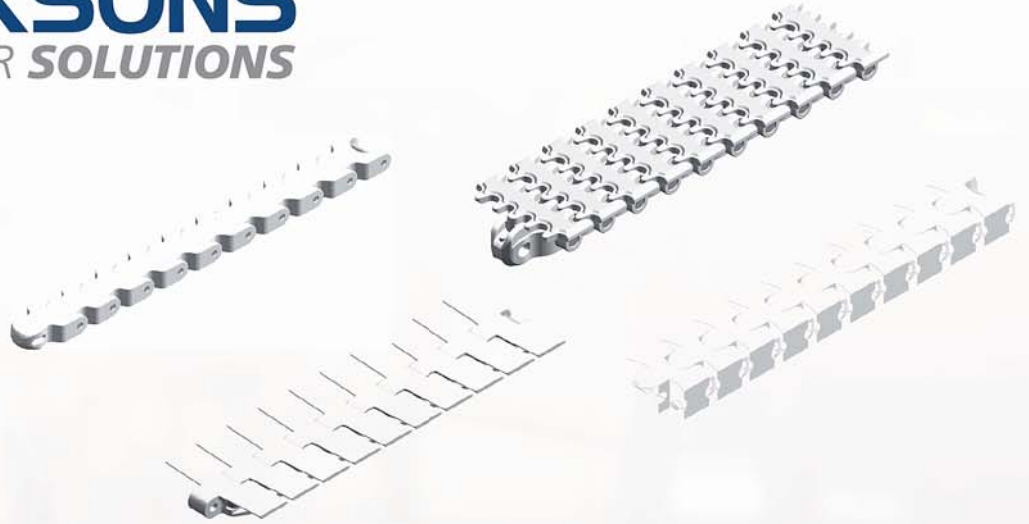


**CONVEYOR
COMPONENT**

FREDRIKSONS
CONVEYOR SOLUTIONS

Chain advantages

- Fredriksons
- Lower COF
- Longer lifetime
- Low mantanace
- Energy saving
- Economical price



FORBO

MOVEMENT SYSTEMS

siegling prolink modular belts



Primary Packaging



Secondary Packaging

Tel: 02-750-4852-8, 02-730-1240-7 #163-172
E-mail: conveyor@thaipolymer.co.th

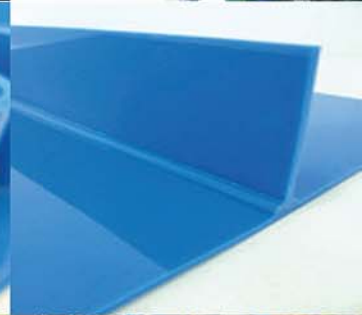
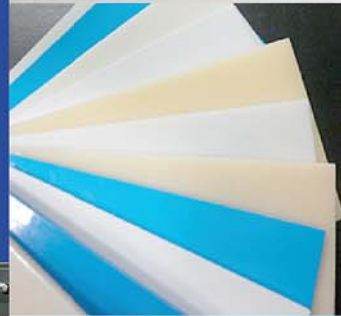
สายพาน อุตสาหกรรม

ผู้นำเข้า และตัวแทนจำหน่าย
สายพานคุณภาพสูงจากต่างประเทศ
บริการติดตั้งสายพานทั้งใน และนอกสถานที่ โดยช่างผู้ชำนาญการ

- CONVEYOR BELTS
- FOOD BELTS
- TIMING BELTS
- ROUND BELTS
- STANLESS BELTS
- FILTER BELTS
- ROLLER CONVEYOR



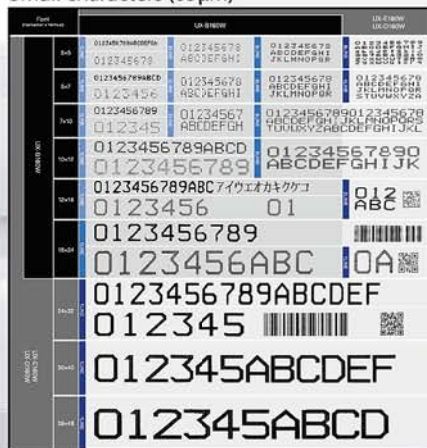
	Cross Section	Material	Type
Guide		PVC	D6
			D8
			D10
			D13
		PU	D17
			D22
			D30
			D13
Cleat		PVC	T10
			T20
			T30
			T40
			T50
			T60
	PU	W35	
		X50	
		X60	
		X80	
		T20	
		T30	
T120			



Ink Jet Printer UX Series

HITACHI
Inspire the Next

Small characters (65µm)



Reduction achieved by the new system



About **50%**
reduction compared to
former models*



The new print technology
“6-Line Print”
meets a variety of needs



Easy



Easy and quick replacement of ink and makeup cartridges without staining your hands. A new error prevention feature (alarm) is provided using IC tags for ink and makeup replacement. Simplified checking makes the replacement more effective.
*Some geographic areas are excluded.

Convenient



Icons on the screen indicate the ink and makeup amount of residue. They also indicate the proper time for cartridge replacement, which further improves usability.

Resource saving



The ink and makeup cartridge bottles can be used right up to the last drop. Using up the ink and makeup eliminates the need to dispose of the ink and makeup, and their cartridge bottles separately.

Hitachi Industrial Equipment Systems Co.,Ltd. declares that the IC tag reader is in compliance with the essential requirements and other relevant provisions of the FCC Part15 subpart C, EN 301 489-1/-3, EN 300 330-1/-2.



Tiflex High Resolution Printers/Coders

HIGH RESOLUTION ONE OR TWO-COLOR PRINTER

- *Economy*
- *Efficiency*
- *Reliability*



Tel : 02-750-4852-8 # 279,231
 Fax : 02-312-2493
 E-mail : tiflex@thaipolymer.co.th

handyjet HANDY-JET

Integrated system of controller, printhead and inkjet reservoir



Shipyard marking



Bag marking



Carton Box marking



Paper Bag marking



Paper Roll marking



Primer Steel Plate marking



e-SolarMark

Laser Marking/Coding System on foils, plastics and metals



Laser coding examples



PVC



Plastic



Thermo sensitive label



Coated metal



PET

LM Series

- Easy Operation
- Speed & Quality
- Proven Reliability



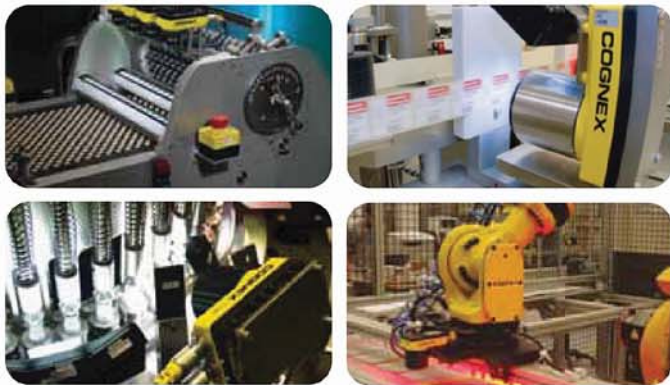
HITACHI Inspire the Next



Contact:

TEL: 0-2750-4852-8, 0-2312-2021-5 #230, 231
 Email: marking@thaipolymer.co.th

COGNEX vision >



Hitachi Vision System MC-20S

Reduce Production waste by incorporating Hitachi's Vision System with our legendary small character printer.

Hitachi Vision System MC-20S working with Hitachi IJ printer for total marking

Hitachi Vision System

MC-20SW1

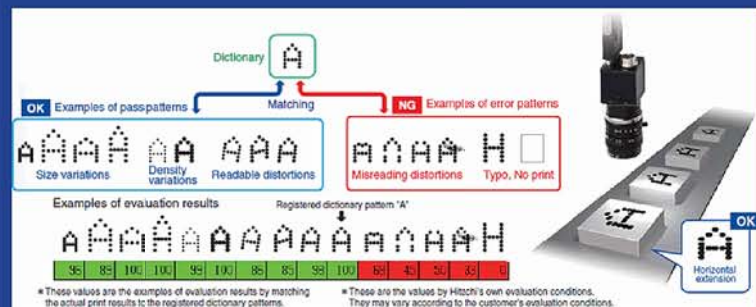


A 15.0 inch TFT LCD touch panel display

Dedicated white LED strobe lighting

Vision System unit

Color camera



Contact:

TEL : 02-750-4852-8, 02-312-2021-5 #278

Email : machinevision@thaipolymer.co.th



HITACHI
Inspire the Next



HITACHI OIL-FREE SCREW COMPRESSOR

OIL FREE SCREW

SINGLE STAGE / TWO STAGE

บีมลม สกรู HITACHI

แบบไม่มีน้ำมันปะปน

ใช้กับลม Oil Free ขนาดตั้งแต่ 15Kw - 580 Kw
เหมาะสำหรับงานอุตสาหกรรมอาหาร อุตสาหกรรม
อิเล็กทรอนิกส์ และอุตสาหกรรมที่ต้องการลมสะอาด

HITACHI OIL-FLOODED screw compressors

HISCREW NEXT II series

บีมลม สกรู HITACHI

แบบใช้น้ำมันหล่อลื่น

ภายใน Oil Flooded ขนาดตั้งแต่ 7.5Kw-250Kw เหมาะสำหรับงาน อุตสาหกรรมทั่วไป



Site work :



OIL FREE
BEBICON



OIL-FLOODED
BEBICON



Spare part :



HITACHI NITROGEN GAS GENERATOR

Hitachi PSA Nitrogen Gas Generator N

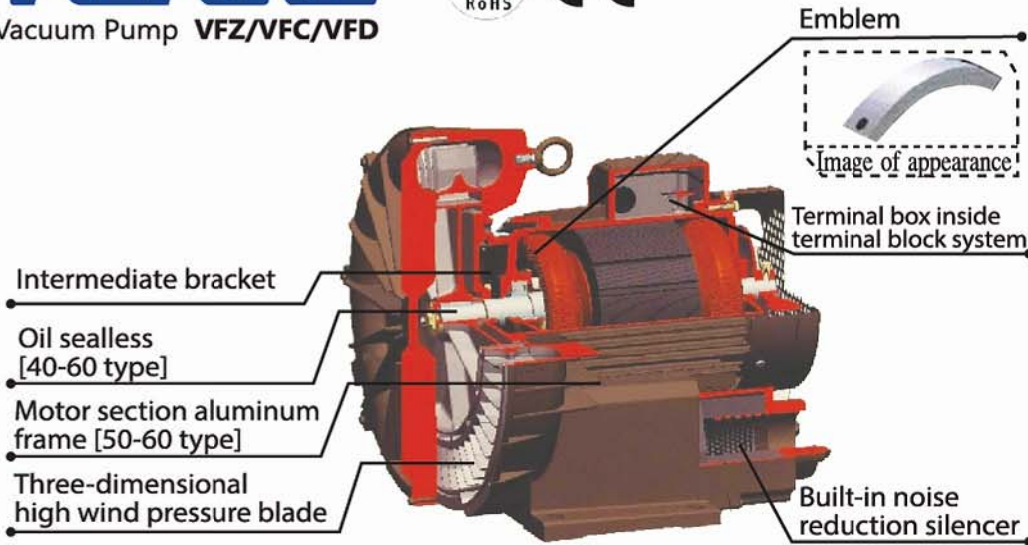
NEXT series Vtype

2.2kW

3.7/5.5kW



TERAL
Vacuum Pump VFZ/VFC/VFD



SPECIFICATION

- ⦿ High pressure-max 25.5 kPa
- ⦿ Strong wind-force-maximum 780 m3/h
- ⦿ Single-Phase / 50 Hz / IP 54 / 200 - 220 V / 0.06-1.3 kW
- ⦿ High vacuum-maximum 14.07 kPa
- ⦿ Stable flow volume Low energyloss.
- ⦿ Three-Phase / 50 Hz / IP 54 / 380 - 415 V / 0.06 - 11 kW



Mist Collector

Mistrésa

Application

Manufacturing machinery Other application

Features

Drastically reduces the filter size. Greatly reduces the frequency and length of maintenance work. Drastically reduces waste. Superior motor performance Easy, safe maintenance Also effective on dust included in the mist Clogging check at a glance Easy drain piping

Also collects dust contained in mist

Mist (Dust) Compatible Series, CRD Type



CRD-NT Type

Mist(Dust) Compatible Series, Type



CRD-H Type

Long-term maintenance - free type

Filterless Series, CRN Type



CRN Type

Enabled to collect high-temperature mist generated by component cleaning machines

High Temperature Mist Compatible Series, CRH Type



CRH Type

High air volume type enabled for an open-type machining center

High Air Volume, CRL Type



CRL-H22 Type

HITACHI

Inspire the Next



TWIN SCREW COMPRESSOR TYPE HITACHI WATER-COOLED CHILLERS



Improved heat-exchange performance by using inverse M type Air Side Heat Exchanger

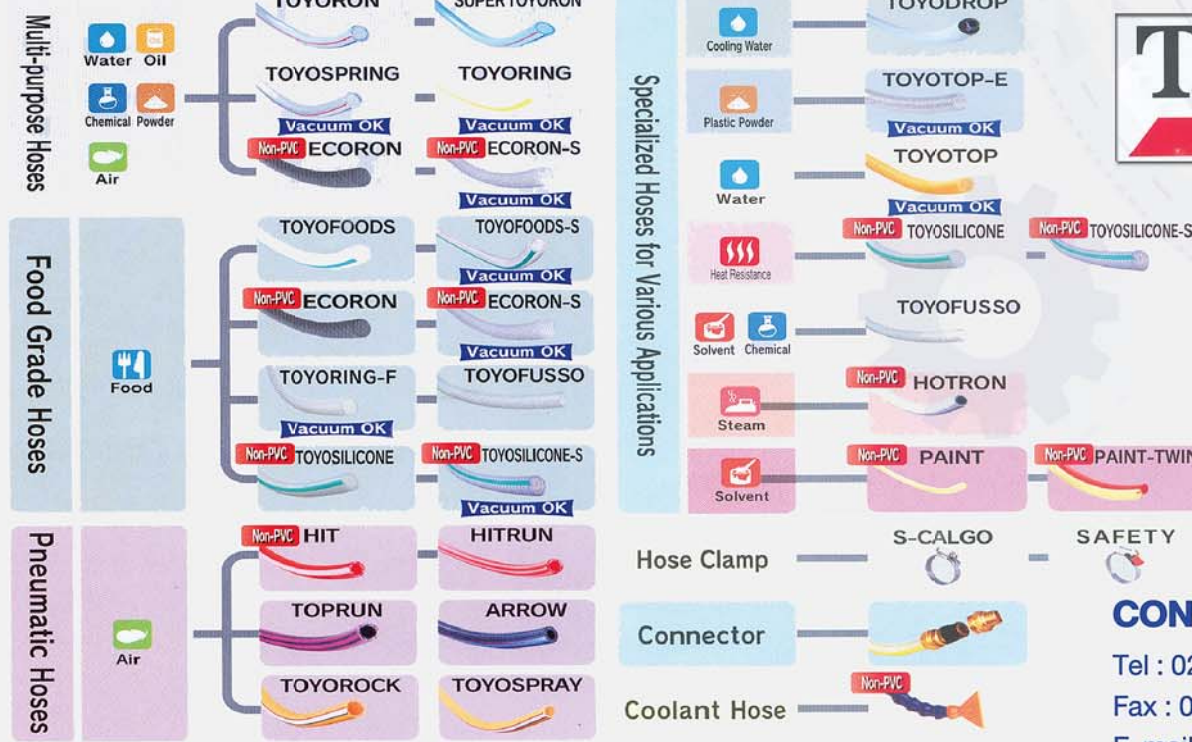
TWIN SCREW COMPRESSOR TYPE HITACHI AIR-COOLED CHILLERS



Protection Net (standard equipment)

Acoustic Chamber (standard equipment)

Industrial Pressure Hoses for Factory Pipe Line & Machine Parts



**High
Performance
Hose**

CONTACT :

Tel : 02-750-4852-8 # 210

Fax : 02-312-1781

E-mail : hose@thaipolymer.co.th

Control Valves

- Pneumatic, Electric, Pneumatic Diaphragm
- Gate, Globe, Butterfly, Ball, Knife Gate



KSB Valves Rang Manual Valves

- Gate-Globe-Check (DIN/ANSI)
- Butterfly (KSB AMRI)
- Diaphragm (KSB SISTO)
- Ball
- Knife Gate

CONTACT :

Tel : 02-750-4852-8#214-215

Fax : 02-730-1257

E-mail : pump@thaipolymer.co.th



KSB VALVES



Pump Supplier to the World

Flowserve is the driving force in the global industrial pump marketplace. No other pump company in the world has the depth or breadth of expertise in the successful application of pre-engineered, engineered and special purpose pump and systems.

Product Brands of Distinction

- Byron Jackson® Pumps
- Durco® Process Pumps
- Flowserve® Pumps
- IDP® Pumps
- Worthington® Pumps
- Worthington Simpson® Pumps
- Niigata Worthington™ Pumps
- Pleuger® Pumps
- SIHI, INNOMAG
- Other

Products Pumps Design

- Process API 610 Pumps
- Chemical Process ANSI and ISO Pumps
- Slurry and Solids Handling
- Industrials Process

For more information.
www.flowserve.com



MEN
End suction
Standard DIN24255



MENBLOC
Closed coupled
Standard DIN24255



Durco Mark3
ISO Standard 2858, ISO 5199



Durco Mark 3
ASME Standard (ANSI) B73.1



Mark 3 Lo-Flo
ASME Standard (ANSI)
B73.1



WD, WDX
Multistage Pumps



F-Line
Multistage Pumps



LR
Axially Split Single Stage



LNN
Axially Split, Double Volute
Single Stage



MPT
Self-Priming
Solids Handling



ERP
Centerline Mounted
API 610 Standard



FRBH
Heavy-Duty
Paper Stock and Process
CEH SIDE CHANNEL



M / R
Abrasive Slurry
Hard Metal and
Rubber-Lined



GRP
PolyChem GRP
Engineered Polymer



GR Series
Double Helical, Gear



VTP
Vertical Turbine



TB-MAG
ASME B73.3
and ISO 2858



ZEN & ZDN & ZHN & ZDI
Volute casing pumps
EN 733/EN 22858



ZTN & ZTK & ZTI
Volute pumps
EN 733



ZLN & ZLK & ZLI
Volute-style
EN 733 & ISO 9908



AEH
SIDE CHANNEL
DIN EN 734



CEH
SIDE CHANNEL



MSL, MSM, MSC and MSH
HORIZONTAL-MULISTE
ISO 5199/EN 25199.



LEM & LEL DRY
LIQUID RING VACUUMPUMP



LPH
LIQUID RING VACUUMPUMP



wilo



MHI

Star-RS

Top-S

MHIL

Worldwide premium-brand

All application :

- heating water
- air-conditioning
- cooling water
- water supply
- sewage disposal
- waste water



MVI



Vertical Turbine



Helix



Rexa Pro



IL



Multi-Stage Pumps



BL



NL



SCP



Booster Set



STS



TWI



FA



TR

Contact:

Tel: 02-750-4852-8, 02-312-2021-5 #216, 285

Fax: 02-730-1257

E-mail: salespump@thaipolymer.co.th

ปั๊มน้ำอุตสาหกรรม การประปา และกรมชลประทาน

MAGNETIC DRIVING PUMP

All application :

- Chemical Solution
- Sea Water
- Water Circulation & Transfer



Made In Japan



PMD 4033
PMD 7533



PMD 641
PMD 1561 PMD 2571



PMD 371



**PLASTICS PIPE FITTING
AND VALVE**

TEL : 02-750-4852-8 #134, 138

FAX : 02-312-2582

Email : ppfv@thaipolymer.co.th

Plastics pipe Fitting and valve

Material :

UPVC, Clean PVC, C-PVC, PP, PVDF, PE, ABS

Standard :

ANSI, SCH 80, DIN, JIS



**PRAHER
VALVES**

ESLON SEKISUI



Product Range

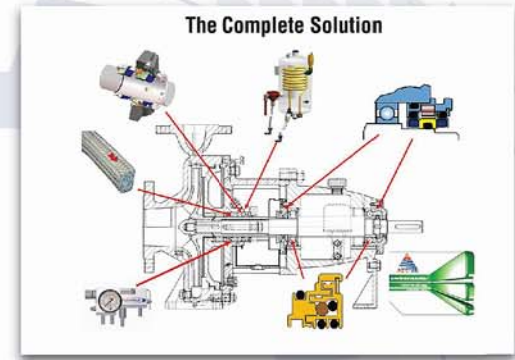


EXPERIENCE THE EXCEPTIONAL



บริษัท สยามแมททีเรียล แอนด์ เอ็นจิเนียริ่ง จำกัด
SIAM MATERIALS & ENGINEERING CO.,LTD.

TEL : 02-750-4852-8 #184-188



Food & Beverage



Pulp & Paper



Chemical



Automotive



Oil & Gas



Power Generation



Metal Processing



Water & Waste Water



HIGH PERFORMANCE

**Rubber
& Elastomers Sealing**

PRODUCTS : O-RING, O-RING CORD, RUBBER SHEET, GASKET, HYDRAULIC & PNEUMATIC SEAL, MADE TO ORDER

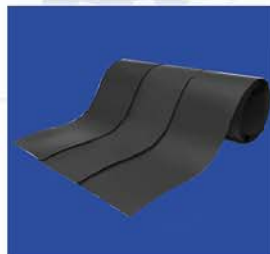
TEL : 02-750-4852-8, 02-312-2021-5 #201-204
Email : oring@thaipolymer.co.th

MATERIAL : VITON, SILICONE, EPDM, NEOPRENE, NBR, NR

Roller



Rubber Sheet



Gasket



Made to Order



Made to Order



O-ring



O-ring Cord



O-ring KIT



Oil & Hydraulic seal



Oil & Hydraulic seal



James Walker® Moorflex

- Spiral wound gaskets
- Kammprofile gaskets
- Metal ring Joint gaskets
- Metal Jacket gaskets
- Flange Insulation Set gaskets
- Rubber Coated Ring Joint gaskets.
- Rota Bolt



ISO 9001:2000
JAMES WALKER (THAILAND)

Tel : 02-750-4852-8, 02-312-2021-5 #139-140

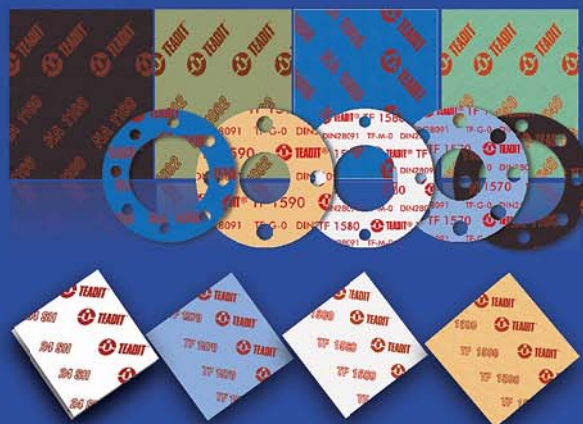
Email : jwm@thaipolymer.co.th



TEADIT®

Sealing for safer and greener tomorrow
NON-ASBESTOS

- Gland Packing For Pump, Valve Special Equipment
- Gasket Sheets
- Gasket Sheets Cutting For Standard Flange and Drawing
- Expanded and structured PTFE Sealing Materials



TEL : 02-750-4852-8 #146-148 FAX : 02-312-2494

Mobile : 063-226-5159

Email : gasket@thaipolymer.co.th



FLUID SYSTEM

SEALPACK GRAPHITE MATERIAL

- Gland Packing
- Graphite Sheets
- Graphite Cutting
- Graphite Tapes
- Graphite Tube
- PTFE Joint Sealant Tapes



Gland Packing



Graphite Tube



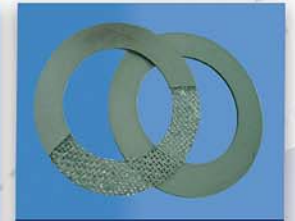
Graphite Tapes



Graphite Sheets



Graphite Foil Rolling



Graphite Cutting



SEALFLON



EXPANDED, VIRGIN PTFE JOINT SEALANT WITH ADHESIVE STRIP

TEL : 02-750-4852-8 #146-148 FAX : 02-312-2494

Mobile : 063-226-5159

Email : gasket@thaipolymer.co.th



- Glass Fiber Cloth-Tape-Rope-Tadpole
- Ceramic Fiber Cloth-Tape-Rope-Blanket-Board-Paper
- Silica Fabric-Fire Blanket-Insulation Jacket-Expansion Joint-Made to order
- Rockwool-Microfiber-PU Foam-Other

Tel : 02-750-4852-8, 02-312-2021-5 #144

Fax : 02-312-2494

Email : Insulating@thaipolymer.co.th





โคมไฟประหยัดพลังงาน Induction Lamp | Explosion-proof Lamp

1. ลดพลังงานไฟฟ้าลง 50% โดยแสงสว่างยังคงเท่าเดิม
2. ทนทาน อายุการใช้งานนานถึง 1 แสนชั่วโมงนานกว่าหลอดและโคมแบบเก่า 8 เท่า
3. อัตราการลดลงของแสงน้อยและลดค่าแสงตกหรือแสงครอบลดลงมาก และรวดเร็ว
4. แสงไม่รบกวนสายตา (ไม่แยงตา)
5. แสงสว่างใกล้เคียงธรรมชาติมาก เหมาะสำหรับการตรวจสอบสิ่งของชิ้นงาน
6. อุณหภูมิต่ำกว่าแบบเดิมมาก
7. จุดคุ้มทุน 5 เดือน หลังจากนั้นเป็นกำไรจากค่าไฟที่ลดลง (กรณีเปิด 24 ชั่วโมง)
8. รับประกันสินค้า 3 ปี ทั้งโคม หลอดไฟ และบัลลาสต์



High Bay



Flood Light



Street Light

HITACHI
Inspire the Next

CHANGEABLE LED UNIT LUMINAIRE

โคมไฟ LED HIGH-BAY

Replacement of 1000w
Metal Halide Lamps

Replacement of 700w
Mercury Lamps



Surface Mounted



Built-in Hole Width 220min Type



Trough Type

LED HIGH-BAY LUMINAIRE



Replacement of 400w
Metal Halide Lamps



Replacement of 400w
Mercury Lamps



Replacement of 250w
Mercury Lamps



Tel : 02-750-7293, 02-750-4852-8 #200, 265, 611

Email : sales@nptgreen.com



FLOORING SYSTEM



พื้นโรงงาน EPOXY

- ทำความสะอาดง่าย
- ทดกรดและด่าง
- รองรับน้ำหนักและแรงกระแทกได้ดี

PU CONCRETE

- ทำความสะอาดง่าย
- ทดกรดและด่าง
- ใช้งานได้กับพื้นที่มีกระบวนการทำงานที่มีน้ำมาเกี่ยวข้อง
- ทนต่ออุณหภูมิต่ำและสูง

พื้นสนามกีฬา และลานอเนกประสงค์ POLY URETHANE

- มีความยืดหยุ่นสูง
- ดูดซับแรงกระแทกจากกิจกรรมต่างๆ ได้ดี

EPOXY



PU CONCRETE



POLY URETHANE



THAKOTECH CO.,LTD.
บริษัท ทาโคเทค จำกัด
www.thakotech.co.th

33/42 Moo 10 Theparak Rd. Bangpla Bangplee Samutprakarn 10540
Tel : 02-315-4231-6 Mobile : 086-369-4516 Fax.02-315-4238-9
Email : epoxy@thaipolymer.co.th, thakotech@thaipolymer.co.th





Polyrethane Co., Ltd.

Producing Polyurethane product.



James Walker (Thailand) Co., Ltd.

Who is joint venture with James Walker Mooflex from United Kingdom produces metal gaslet.



Thakotech Co., Ltd.

Who is joint venture with Korea's company doing business of indoor and outdoor stadium from artificial turf, epoxy matel, or polyrethane material.



TPS Material Co., Ltd.

producing and providing ceramic products such as latex cup, bowl, plate, ect. The factory is located in Nakhonpanom province.



NPT Green Co., Ltd.

Importer and distributor of lighting equipment and electric lamps LVD Induction Lamp and LED technology of advanced manufacturing facilities globally.



Siam Material and Engineering Co., Ltd.

Imports, sales and provide service for AES Mechanical Seal from United Kingdom.

BRANCH

Rayong Branch	267/196 Muangmai Mapthaphut, Muang, Rayong 21150 Tel. 038-608-925-7, 086-331-1692 Fax. 038-608-928 E-mail : branchry@thaipolymer.co.th
Laem Chabang Branch	299/8 Moo 1, Perfect Town Village, Naung Kham, Sri Racha, Chon Buri 20280 Tel. 038 196 045-7, 086-610-5432 Fax. 038-196-046 Email. branchlc@thaipolymer.co.th
Prachuap Khiri Khan Branch	183 Moo 2, Hinong Hu Chang Rd., Koak Lek, Muang, Prachuap Khiri Khan 77000 Tel. 032-611-529 Fax. 032-602-382 E-mail : branchpj@thaipolymer.co.th
Hatyai Branch	6 Moo 1 Sri-Siam Village, Leabmung-Asia Rd., Hatyai Songkhla 90110 Tel. : 074-556-441-2 Fax. : 074-556-443 E-mail : branchhy@thaipolymer.co.th
Surat Thanee Branch	8/84 Moo 3, Leangmuang Rd., Makaam-tia, Muang, Surathane 84000 Tel. 077-220-711 Fax. 077-220-711 E-mail : branchsr@thaipolymer.co.th
Khon Kaen Branch	888/163 Moo 5 P.S. Home Village, Mung Khon kaen, Khonkaen 40000 Tel. 043-470-026, 081-302-1847, 096-198-9654 Fax. 043-470-126 E-mail : branchkk@thaipolymer.co.th
Nakhon Ratchasima Branch	233/54 Moo 1, Chaloeam Phrakiat Rd., Nongkrathum, Muang, Nakhonratchasima 30000 Tel. 044-992-915 Fax. 044-992-914 E-mail : branchkr@thaipolymer.co.th
Saraburi Branch	792/26 Phichaironarongsongkhram Rd., Pakpreaw, Muang, Saraburi 18000 Tel. 036-731-599 Fax. 036-731-518 E-mail : branchsb@thaipolymer.co.th
Nakronpathom Branch	2/18 Sanam-Chan, Muang Nakronprathom 73000 Tel. 034-244-489 Fax. 034-244-490 E-mail : branchnt@thaipolymer.co.th
Chiang Mai Branch	161 Moo 1, Soi Wat Changkien, Huaykeaw Rd., Changpheuk, Muang, Chiangmai 50300 Tel. 053-221-621 Fax. 053-222-153 E-mail : branchcm@thaipolymer.co.th
Navanakorn Branch	26/56 Moo 18, Soi Navatai, Klongnueng, Klongluang, Pathumthani Tel. 02-529-5731-3 Fax. 02-529-5875 E-mail : branchnn@thaipolymer.co.th
Prachinburi Branch	339/11 Moo 10 Thatoom, Srimahaphote, Prachinburi 25140 Tel. 037-466-092 Fax. 037-466-093 E-mail : branchpc@thaipolymer.co.th
Samut Sakhon Branch	99/587 Moo 1, Amorn Chai Village 5., Soi 3A, Bang Nam Chuet, Muang, SamutSakhon 74000 Tel. (034)440-704-5, 063-224-3443 Fax. (034) 440-706 E-mail : branchpc@thaipolymer.co.th



THAI POLYMER SUPPLY CO.,LTD.

406 Sukumvit 55 (Sol Thong Lor). Sukumvit Rd., Klongton Nue, Wattana, Bangkok 10110
Tel. 0-2750-7296-7, 0-2750-4852-8 Fax. 0-2750-7299, 0-2312-1781
E-mail : marketing@thaipolymer.co.th www.thaipolymer.co.th