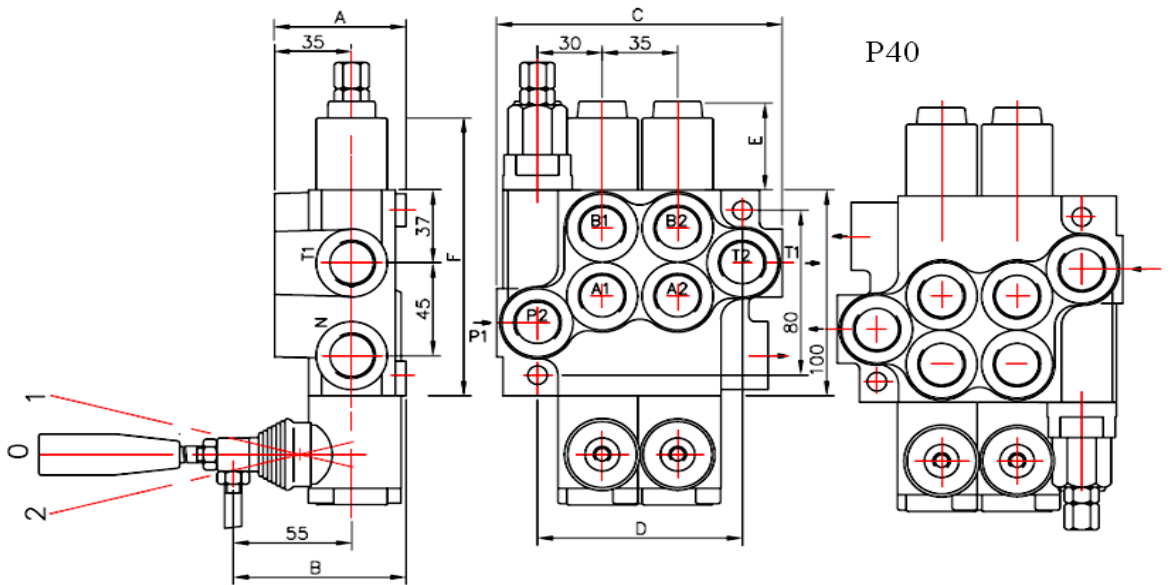
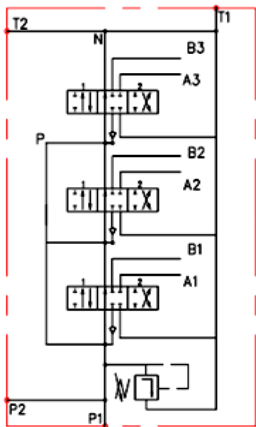


The Company was founded in 1902 as an industrial metalworking enterprise. It ranks among the first representatives of the evolving industry in Bulgaria at the beginning of 20 C. Since 1978 it has been specializing in the manufacture of hydraulic distributors and hydraulic components.



Badestnost Control Valve สำหรับรถเกี่ยวขนาดข้าม, รถคืบอ้อย และงานอุตสาหกรรมทั่วไป

No.	Model	L/Min	No.Spool	Working Ports
1	P40 A1 GKZ1/BN	40	1	P,A,B,T = G-1/2 (4 พุน)
2	4P40 1A1A1A1 GKZ1/BN	40	4	P,A,B,T = G-1/2 (4 พุน)
3	P80 A1GKZ1/BN	80	1	P,A,B = G-1/2 (4 พุน),T=G3/4 (6 พุน)
4	P80 D8GKZ1/BN	80	1	P,A,B = G-1/2 (4 พุน),T=G3/4 (6 พุน)
5	2P80 1A1A1 GKZ1/BN	80	2	P,A,B = G-1/2 (4 พุน),T=G3/4 (6 พุน)
6	2P80 1A1A1 GKZ1/BN	80	2	P,A,B = G-1/2 (4 พุน),T=G3/4 (6 พุน)
7	2P80 1A1A1 GKZ1 C2/BN	80	2	P,A,B = G-1/2 (4 พุน),T=G3/4 (6 พุน)
8	2P80 1H9A1 GKZ1-11/BN	80	2	P,A,B = G-1/2 (4 พุน),T=G3/4 (6 พุน)
9	2P80 A8A1 GKZ1	80	2	P,A,B = G-1/2 (4 พุน),T=G3/4 (6 พุน)
10	3P80 1A1A1A1 GKZ1/BN	80	3	P,A,B = G-1/2 (4 พุน),T=G3/4 (6 พุน)
11	3P80 1C1A1A1 GKZ1/BN	80	3	P,A,B = G-1/2 (4 พุน),T=G3/4 (6 พุน)
12	3P80 1D8A1A1 GKZ1/BN	80	3	P,A,B = G-1/2 (4 พุน),T=G3/4 (6 พุน)
13	2PK80 2AK31AK31 G-22/BN	80	2	P,A,B = G-1/2 (4 พุน),T=G3/4 (6 พุน)
14	3PK80 2AK31AK31 A1 G-22/BN	80	3	P,A,B = G-1/2 (4 พุน),T=G3/4 (6 พุน)
15	4P80 1A1A1A1 GKZ1/BN	80	4	P,A,B = G-1/2 (4 พุน),T=G3/4 (6 พุน)
16	3PC70 N2C1A1T2GKZ1/BN	70	3	P,A,B,T = G-1/2 (4 พุน)
17	P120 A1 GK21/BN	120	1	P,A,B = G-3/4 (6 พุน),T=G1
18	3P120 A1A1A1 GKZ1/BN	120	3	P,A,B = G-3/4 ,T=G1
19	4P120 A1A1A1 GKZ1/BN	120	4	P,A,B = G-3/4 ,T=G1
20	P80-SP-LEVER-L170/BN			HAND CONTROL P80
21	P80-C2-SYT	G-3/4		CARRY OVER PORT
22	PC70-PLUG/BN	G-3/4		CARRY OVER PORT
23	P80-PLUG/BN	G-3/4		CARRY OVER PORT G3/4
24	P80-KZ/BN			KIND OF HAND CONTROL
25	P80-1000120/BN			END CAP SPRING COVER (ALUMINIUM CAP P80/P40)
26	P80-SP/BN			SPOOL CONTROLDETENT P80
27	PLUG G1/2" NBR ED SEAL (4พุน)			PLUG PORT FOR CONTROL VALVE
28	PLUG G3/4" NBR ED SEAL (6พุน)			PLUG PORT FOR CONTROL VALVE
29	PLUG G3/8" NBR ED SEAL (3พุน)			PLUG PORT FOR CONTROL VALVE



	A	B	C	D	P1	P2	T1	T2
P40	60	80	85	60	+	-	+	-
02P40	60	80	129	97	+	+	+	+
03P40	60	80	164	132	+	+	+	+
04P40	60	80	199	167	+	+	+	+
05P40	60	80	234	202	+	+	+	+
06P40	60	80	269	237	+	+	+	+
07P40	60	80	304	272	+	+	+	+
2P40	60	80	129	97	+	+	+	+
3P40	60	80	164	132	+	+	+	+
4P40	60	80	199	167	+	+	+	+

spool control фиксация золотника		E	F
1; 4; 5; 6; 7; 8; 9; 10; 11;		40	193
2; 3;		72	225
16		+	+

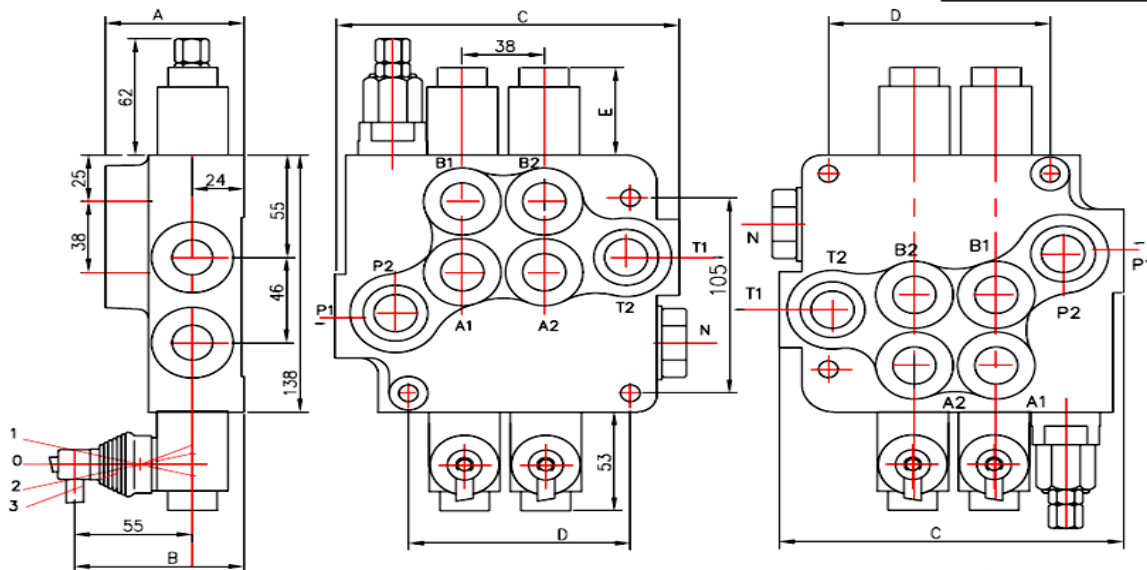
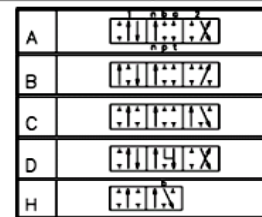
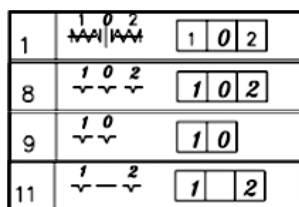


Table 1

	A	B	C	D	P1	P2	T1	T2
P80	65	79	107	65	*	*	-	-
2P80	80	94	160	103	*	*	*	*
3P80	80	94	198	141	*	*	*	*
4P80	80	94	242	179	*	*	*	*
5P80	80	94	280	217	*	*	*	*
6P80	80	94	318	255	*	*	*	*

Table 2

Spool control		E
1, 4, 5, 6, 7, 8, 9, 10, 11,		40
2, 3, 12, 14		72
13		44

P80