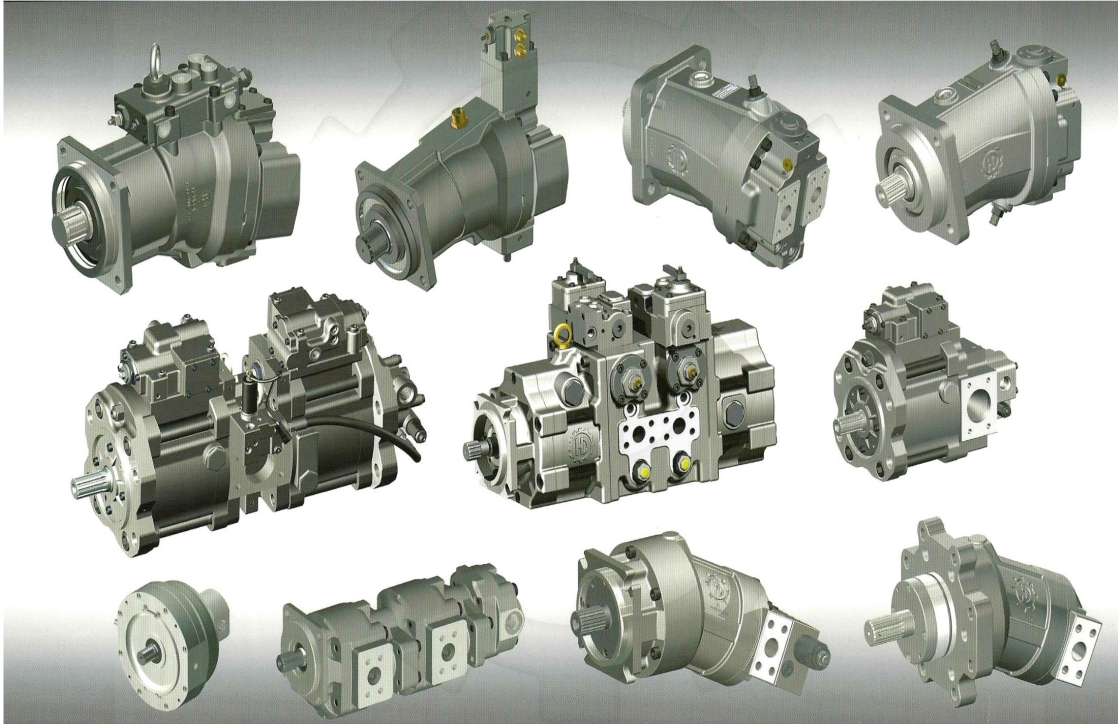
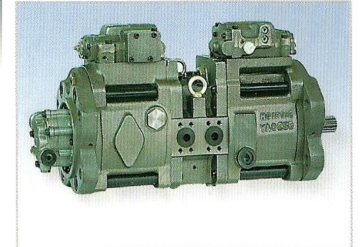


Since the company's foundation in 1987 starting repairing business of hydraulic pumps for heavy construction equipment.

Handok Hydraulic has been engaging in producing a wide range of replacements parts for hydraulic pumps and motors for various heavy construction equipment and industry machinery from 1991.



1 SWASH PLATE TYPE VARIABLE PISTON PUMPS (摇摆盘式可变柱塞泵)



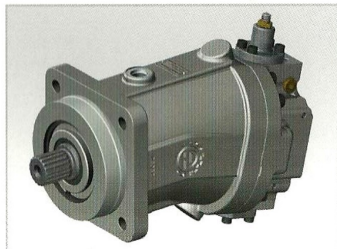
H3V PUMP SERIES (63DT/112/140/180/280) (H3V 型系列泵)

1 BENT AXIS TYPE VARIABLE PISTON PUMPS (弯轴式柱可变塞马达)



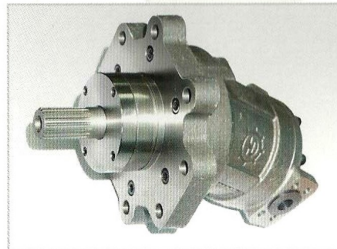
HPV 116/145 PUMP SERIES (HPV 116/145 型系列泵)

1 BENT AXIS TYPE VARIABLE PISTON MOTOR (弯轴式柱可变塞马达)



H6V55M/80M/107M/160M&H6VM55/80/107/160 (型系列马达)

1 BENT AXIS TYPE PISTON MOTOR (弯轴式柱塞马达)



HBF90M (K-TYPE) (HBF09M 型系列马达)

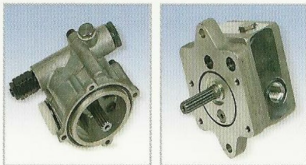
1 BENT AXIS TYPE PISTON MOTOR (弯轴式柱塞马达)



HBF35M/50M/90M (S-TYPE) (HBF35M/50M/90M 型系列马达)

GEAR PUMP FOR KAWASAKI

(KAWASAKI / 齿轮泵)

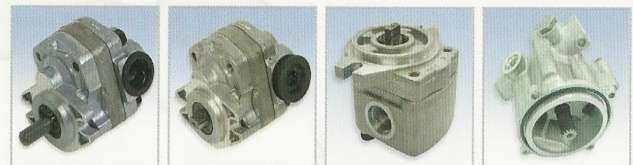


H3V SERIES & NV SERIES

DISCHARGE RATE (排量): 12&15cc/rev
RELIEF PRESSURE (设定压力): 50kg/cm²
MAX SPEED (转速): 2,200~3,250rpm

GEAR PUMP FOR KOBELCO&CATERPILLAR&MITSUBISHI

(KOBELCO&CATERPILLAR&MITSUBISHI / 齿轮泵)



DISCHARGE RATE (排量): 7&9cc/rev
RELIEF PRESSURE (设定压力): 210kg/cm²
MAX SPEED (转速): 500~3,250rpm

GEAR PUMP FOR HITACHI EXCAVATOR

(HITACHI / 日立掘土机用齿轮泵)



DISCHARGE RATE (排量): 16.8cc/rev
RELIEF PRESSURE (设定压力): 210kg/cm²
MAX SPEED (转速): 3,200rpm

EPR VALVE SERIES

(电磁阀)



UCHIDA (内田)
& KAWASAKI (川崎)
& KOMATSU SERIES
(小松系列)

RELIEF VALVE SERIES

(减压阀系列)



KAWASAKI SERIES FOR REPLACEMENT PARTS



UCHIDA&HYDROMATIC&REXROTH SERIES FOR REPLACEMENT PARTS



HITACHI SERIES FOR REPLACEMENT PARTS



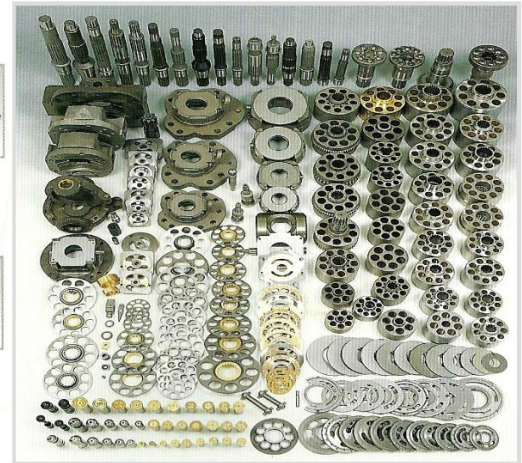
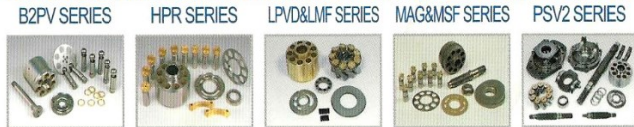
MITSUBISHI / CATEPLLAR SERIES FOR REPLACEMENT PARTS



KOMATSU&SHIBAURA&DEIJIN SEIKI SERIES FOR REPLACEMENT PARTS



LINDE&KAYABA&LIEBHERR SERIES FOR REPLACEMENT PARTS



สอบถามราคา และรายละเอียดเพิ่มเติม
บริษัท เวิลด์ แทริคเตอร์ (1996) จำกัด
โทร:0-2551-1021,0-2551-1137-42
<http://www.worldtractor1996.com>, <http://www.facebook.com/worldtractor1996>, e-mail:info@worldtractor1996.com



GEAR PUMP FOR KOMATSU EXCAVATOR (KOMATSU/小松掘土机用齿轮泵)



DISCHARGE RATE (排量): 13.2-28.6cc/rev
RELIEF PRESSURE (设定压力): 40kg/cm²
MAX SPEED (转速): 3,200rpm

GEAR PUMP FOR UCHIDA&REXROTH&HYDROMATIC (UCHIDA&REXROTH / 齿轮泵)

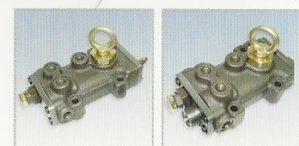


A8V SERIES & A8VO SERIES
DISCHARGE RATE (排量): 12cc/rev
MAX PRESSURE (设定压力): 210kg/cm²
MAX SPEED (转速): 2,500rpm

REGULATOR TYPE OF H3V63/112/140/180/280



REGULATOR TYPE OF HPV116/145(C/D/F)





No.	Part No.	Description
1	HPV145FMPP28/HD	PUMP ASSY WITH REGULATOR HPV145F
2	HPV145HMPS16/HD	PUMP ASSY WITH REGULATOR (FOR ZX350-3)(HPV145H)
3	HPV95MPP77/HD	PUMP ASSY C/W A CHARGING PUMP FOR PC200-6
4	HPV95MPP78/HD	PUMP ASSY WITHOUT CHARGING PUMP FOR PC200-7
5	K3V112DTMPP02/HD	PUMP ASSY FOR KOBELCO (12T)
6	K3V112DTMPP03/HD	PUMP ASSY FOR KOBELCO (14T)
7	K3V112DTMPP40/HD	PUMP ASSY-9C TYPE (FR 12TRR13T) (DOUBLE EPR VALVE)
8	K3V112DTPMPP71/HD	PUMP ASSY (9TDL TYPE) (FR14TRR13T) (FOR K3V112DTP)
9	K3V112DTPMPP79/HD	PUMP ASSY (9TDL TYPE (FR14T OR 12T RR13T) (FOR K3V112DTP)
10	K3V112DTPMPP82/HD	PUMP ASSY (YTOK TYPE) (FR17T RR13T) (FOR K3V112DTP)
11	K3V63DTMPP81-1/HD	PUMP ASSY (6N TYPE) (FR 14T)

REPLACEMENT PARTS & SERVICE

PART NO.	MACHINE MODEL
KAWASAKI SERIES FOR REPLACEMENT PARTS	
DNB50B/60B	S280LC-3, S290LC-5, S320LC-3, S330-3/5, R280LC-3, R320-2/3, R360LC-3, SE280LC-2/3, SE350LC-2/3 TRAVEL MOTOR
KVC925L, KVC925DP	UH07-3/5, UH121, UH171, UH20, UH30, UH801 MAIN PUMP
KVC930, KVC932	MS280, MS380, HD1880SE-2 MAIN PUMP / UH16, UH181, UH501, UH581, EX1000 MAIN PUMP
K3V112BDT	SK200-5, SK220-3/5, SK400-5 MAIN PUMP
K3V112DT	K907-2, K907D, SK07-2, SK200-2/3/4, SK220-2/3, SH200/220, R210LC, SE210LC-2/3, EC210LC, EC240LC MAIN PUMP
K3V140DT	K912, K916, SK300/400-2, 904B, S280-2/3, R280/290-3, SE280-2/3, EC290LC MAIN PUMP
K3V180DT/DTH	EX400-3/5, K916-2, SK300-2/3, SK400-2/3/4, S450-3/5, SE350-3, SE450-3, EC460 MAIN PUMP
K3V280(SH)DT/DTH	EX750-5, EX1100-3, EX1800-3, EX2500, EX5500 MAIN PUMP
K3V63BDT	SK100-5, SK120-5 MAIN PUMP
K3V63DT	311, 315, K904-2, K905-2, SK045, SK100/120, SK100/120-2, SK150LC-2, SE130-2/3 MAIN PUMP
K5V80	
K5V140DTP	S330LC-5 MAIN PUMP
K5V200DPH/	EX455, R450-7 (DPH), R470-7/R500-7 (DTH) MAIN PUMP
M2X120	EX200-2/3, EX550-3, EX600-3, 320, 320B, 345, SK200-5/6, S220LC-5, EC210LC SWING MOTOR
M2X146	EX200-5, JD160LC, JD200LC, SK230-6 SWING MOTOR
M2X150, M2X170	EX200-1, EX220-1/2/3, EX400-3/5, SK200/220-1/3, SK07-N2, K909-2, SE280LC-2/3, EC290LC, 330 SWING MOTOR
M2X210	EX200-2/3, EX270-1, EX300-1/2/3, EX1100, LS4300, SH350, K912, SK300-1/2/3, SWING MOTOR
M2X63	SK100-3, SK120, S130-2/3/5, R130LC-3, SE130LC-3, EC140LC SWING MOTOR
M2X96	EX200-2 SWING MOTOR
M5X130	Zaxis 200 SWING MOTOR
M5X180	Zaxis 330, Zaxis 360LC SWING MOTOR
MX150	EX400-1, K907C/D, K907-2, MS240LC-8, MS300-8 SWING MOTOR
MX173	EX200/220-1 (Old), SWING MOTOR
NV120, NV137	K909A/C, K912, SK12, SK220-1/3, SK300-1/2, S280 MAIN PUMP
NV172	450, E450, SK400, MS450-8 MAIN PUMP
NV210, NV270	EX700, EX1100, EX1800-1/2, SPF100P (CONCRETE PUMP CAR) MAIN PUMP
NV45/NV50/NV60/NV64	K903-2, K904-2, K905-2, SK04-2 MAIN PUMP
NV60	K903-2, K904-2, K905-2, SK04-2 MAIN PUMP
NV70	LS2650C, LS2650C2 MAIN PUMP
NV80	K909, K909A, SK09 MAIN PUMP.
NV84	UH063, UH065 MAIN PUMP
NV90/NV111	E300, EL300, K907C/D/E, SK07, SK200, SK220, LS3400 MAIN PUMP
NVK45/DNB08	K903B/C, SK03-N2, SK04-N2, HD250SE MAIN PUMP

PART NO.	MACHINE MODEL
UCHIDA & HYDRAULIC & REXROTH SERIES FOR REPLACEMENT PARTS	
A2F55	
A2F80	
A2F107	
A2F160	
A3V107SR, A3V107SR1R	HD880SE-2, HD1200G, HD1220SE MAIN PUMP
A3V55SR	HD500 MAIN PUMP
A3V80SR	HD700G, HD750G MAIN PUMP
A4VG56	
A4VG71	BW212 BOMAG (Road Roller)
A4VSO250	CONCRETE PUMP TRUCK, INDUSTRIAL APPLICATION
A6V59	
A6VM107	S130W, R170W-3, SE130W-3 TRAVEL MOTOR
A6VM115	S130W-3 TRAVEL MOTOR
A6VM160	SE170W-3, SE210W-2, R200W-3, S200W TRAVEL MOTOR
A6VM172	S200W-3 TRAVEL MOTOR
A6VM200	
A6VM55	MX3W-2, MX55WS, R500W-3 (Mini), R55W-3 TRAVEL MOTOR
A6VM80	S50W, R500W (Mini), R55W-3, R95W-3 TRAVEL MOTOR
A6VM86	
A7V107	K912, K914, K916 PUMP FOR SWING
A7V160	K916 MAIN PUMP FOR SWING
A7V55	
A7V80	HYUNDAI CONCRETE PUMP CAR, INDUSTRIAL PURPOSE
A7VO107L	215 MAIN PUMP
A7VO160	330(L), 330B(L) MAIN PUMP
A7VO200	
A7VO250LR/EL	EX400-1, EX450 MAIN PUMP
A7VO55	
A7VO80L	
A8V107ESBR / ERBR / ERIR / ERAR	LS2800FJ, LS2800C2, LS3400FJ2, LS4300C, 9030(A) MAIN PUMP
A8V115ESBR	LS4300CJ2, LS4300C2, 9050A MAIN PUMP
A8V172ESBR	SK16, SH300-2, LS4300FJ2, LS5800F2/C2, 9050(B), 9060A/B MAIN PUMP
A8V55ESAR	HCR180 (Furukawa Drilling Machine) MAIN PUMP
A8V55ESBR	EX100/120-1, EX100M, EX100W, EX90, SK100W, K909A, HD400SEV, HD450V-2 MAIN PUMP
A8V59ESBR / ERBE / ERIR / ERAR	JD160LC, S130-2 MAIN PUMP
A8V80ESBR / ERBE / ERIR / ERAR	HD400SE, HD400SEM, HD450SE, HD550SE, HD650SE, HD700G, 921 (Liebherr) MAIN PUMP
A8V86ESBR / ERBR / ERIR / ERAR / ERAR	EX150-1, JD590D, JD595D, S130W-3/5, HD400SE-2, HD400SEM-2, HD550SEV MAIN PUMP
A8V55SR1R/ ER1R	UH045-7, UH063 MAIN PUMP
A8V107SR1R, A8V99SR	K914, HD770SE, HD880SE-2 MAIN PUMP

PART NO.	MACHINE MODEL
UCHIDA & HYDRAULIC & REXROTH SERIES FOR REPLACEMENT PARTS	
A8V80SR1R	HD750G, 921 (Liebherr) MAIN PUMP
A8VO107, AA8VO107, AA8VTO107	215, 225, 225B, 320, 320B, 322B, 325, S200W MAIN PUMP
A8VO200	CAT.330C, S420LC-5
A8VO160L/ SR , AA8VTO160	330 (L), 330B (L) MAIN PUMP
A8VO55L	
A8VO80L	R170W-3, R180LC-3 MAIN PUMP
A10V17SR, A10V23SR	PC25, MX3LC MAIN PUMP
A10V17SR, A10V23SR	S50LC MAIN PUMP
A10V21SR	S50LC MAIN PUMP
A10V28SR	R450 (Mini), GS50LC MAIN PUMP
A10V40SR	EC60-1, K903-2, SK03-N2, SH60 MAIN PUMP
A10V43SR, A10VD43SR	EX60-2/3, JD190, SK60 MAIN PUMP
A10V45	
A10VD40SR	EX60-1, K903-2, SK03-N2, SH60 MAIN PUMP
A10V045	
A10V071, A10V71	CAT.416B/C, HD250V-2 MAIN PUMP
A10V100	FOR INDUSTRIAL
AP2D21	S50W-3 MAIN PUMP
AP2D25	S55-5, R55-3, SE50-3, EC55 MAIN PUMP
AP2D36, AP2D38	EX60-5, S55LC-V MAIN PUMP
HPV145C,D,F	EX270, EX300-1/2/3, EX300/330/350/370-5 MAIN PUMP
HPV050FW, HPV0507W	EX100/120-5, EX100M-5, EX110-5 MAIN PUMP
HPV105FW, HPV102FW/GW	EX200-5, EX270-5 MAIN PUMP
HPV091DW	EX200-2, EX220-2 MAIN PUMP
HPV091EW	EX200/220-3 MAIN PUMP
HPV091DS/ES	EX100/120-2/3, EX100M-2/3 MAIN PUMP
MITSUBISHI & CATEPLLAR SERIES FOR REPLACEMENT PARTS	
AP-12C, SBS120	320C MAIN PUMP
AP-12(OLD)	E200B, EL240 MAIN PUMP
AP-12	320 (Japan) MAIN PUMP
PPS140	MS180-1/2, MS180-3/8 (Old), MS230, MS230-2, MS280 MAIN PUMP
SPK10/10	E180, E200B, EL200B, E240B, EL240B, MS180-8 (New) MAIN PUMP
SPV10/10	MS180-3 (New), MS180-8 (Old & New), MS240LC-8 MAIN PUMP
VRD63	Caterpillar E110B and E120B.
MCB172	320B/C/D, 325, 330L, 330LN, E180, EL240, E240B, EL300B TRAVEL MOTOR
MF21,(S)PV21,PVD21	SK04, K904D MAIN PUMP
MF22,(S)PV22,PVD22	E120, K905, SK05, MS110-5/8, MS120-2, MS140-2 MAIN PUMP
MF23,(S)PV23,PVD23	
CAT.12G,120G ,215	(Caterpillar)
CAT.140G	(Vickers)
CAT.14G,16G,225	Caterpillar

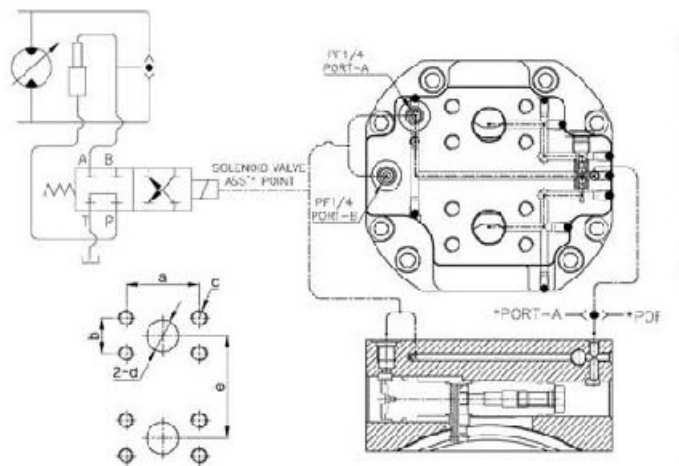
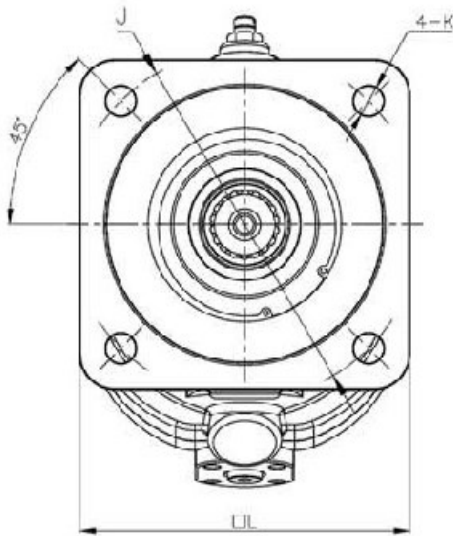
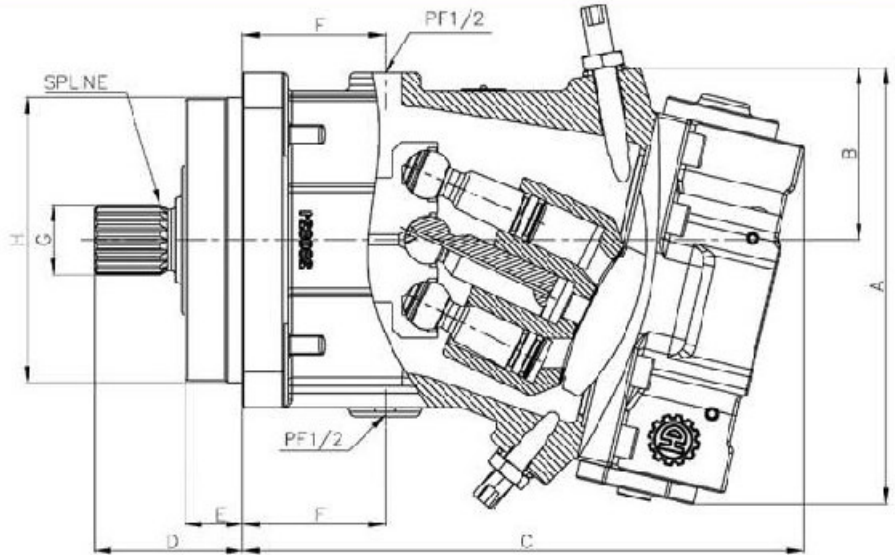
PART NO.	MACHINE MODEL
HITACHI SERIES FOR REPLACEMENT PARTS	
HMGC16, HMT045	EX100/120-1 TRAVEL MOTOR
HMGC32BA, HMT107	EX200/220-1 TRAVEL MOTOR
HMGC35, HMT116, HMGF38A, HMGF35, HMGF36	EX200/220-2/3/5 TRAVEL MOTOR
HMGC48, HMT134	EX270-1, EX300-1/2 TRAVEL MOTOR
HMT125AC	UH07-7, UH083 TRAVEL MOTOR
HPV116C	EX200-1, EX220-1, FH200, FH220 MAIN PUMP
KOMATSU SERIES FOR REPLACEMENT PARTS	
KPV90	PC150-1, PC200/220-1, 20HT-3
HPV90	PC200-3/5, PC220-3/5, PC650-3/5 Tandem Pump
HPV95	PC200-6, PC210-6, PC220-6, PC200-7 Tandem Pump
HPV160	PC300-3/5, PC400-3/5 Tandem Pump
HPV132, HPV165	PC300-6, PC400-6 Tandem Pump
HPV125K, HPV140	PC300-7
KMF40	
KMF41	PC60-7 SWING MOTOR
KMF125	PC200-7 SWING MOTOR
KMF90	PC200-3/5, PC220-3/5 SWING MOTOR
SHIBAURA, TOSHIBA SERIES FOR REPLACEMENT PARTS	
SG02	
SG03, MFB65	SK100-5, SK120-5, SH100-2/3 SWING MOTOR
SG04, MFB80	SK120, SH100, 9010B, S130-3, R130LC-3, SE130W SWING MOTOR
SG08, MFB150, MFB160	E200B, SH200, LS2800FJ, S450-3, R210LC-3, R450LC-3, SE210LC-2/3, SE450LC-3, EC450LC SWING MOTOR
SG15, MFB200	S280 SWING MOTOR
SG20, MFB250	S320LC-3, S360LC-3, S400LC-3, R360LC-3, SE350LC-2/3, EC360LC SWING MOTOR
DEJIN SEIKI SERIES FOR REPLACEMENT PARTS	
GM08VL	PC60-2/3, PC60-5
GM17VA	S130-2 TRAVEL MOTOR
GM23H	DH130M, HD400SEM-2/5 TRAVEL MOTOR
GM24VA	S130-3/5, S170-3, R130LC-3, SK100M, SK100-5, SK150, LS2700, LS2800EJ, HD770SE-2, HD880SE-2, HD850G TRAVEL MOTOR
GM30H	S220LC, LS2800EJ, HD770SE-2, HD880SE-2, HD900SEV, HD1250SEV, 9040A TRAVEL MOTOR
GM35VA	S220LC-3/5, R210LC-3, SE210LC-2/3, EC210LC, SE280, HD900V-2 TRAVEL MOTOR
GM35VL	S220LC-5, SE210LC-2/3, EC210BLC, R210LC-3, R250LC-3 TRAVEL MOTOR



PART NO.	MACHINE MODEL
LINDE SERIES FOR REPLACEMENT PARTS	
HPR90/100	JD690D/E, JD693D, 888 (Case), S450 MAIN PUMP
HPR130	CK90, S320, D8N MAIN PUMP
HMV180	R450-3 TRAVEL MOTOR
LIEBHERR SERIES FOR REPLACEMENT PARTS	
LPVD45	
LPVD64 (PUMP)	
LMF64 (MOTOR)	
LPVD75	
LPVD90	
LPVD100	
LPVD125	
LPVD140	
KAYABA SERIES FOR REPLACEMENT PARTS	
MAG80VP	
MAG150-3000,MAG150-5000	SK200-3, SK300, HD700V-2, S280, S320 TRAVEL MOTOR
MSF89	
MSF170VP	SH200, SH220, SH300, LS4300C2, SK230-6, HD820 TRAVEL MOTOR
MAG170VP	
MSF200	
PSV2-55 (KNJ1817/20640-43507)	SH100, SH120, 9010B MAIN PUMP
PSV2-63	SH120, 9010, LS2650 MAIN PUMP
MAF33	
MAF36	
MAF87	
PVS37	
SHR70L	
EBARA SERIES FOR REPLACEMENT PARTS	
B2PV75	LS2800BJ, K907B SWING MOTOR
B2PV105	K909B, SK12, LS2800CJ, LS3900S MAIN PUMP
EATON SERIES FOR REPLACEMENT PARTS	
EATON33	
EATON46	
EATON54	



H6VM55/80/107/160 BENT AXIS TYPE DISPLACEMENT VARIABLE AXIAL PISTON MOTOR (H6VM55/80/107/160 弯轴式柱塞马达)



SPLINE SPECIFICATION (花键参数)

MODEL (型号)	No. of teeth (齿数)	Pitch circle dia(mm) (定位圆直径)	Module (模数)	Pressure angle (压力角)
H6VM55	14	28	2.0	30°
H6VM80	16	32	2.0	30°
H6VM107	18	36	2.0	30°
H6VM160	21	42	2.0	30°

FLANGE MOUNTING FACE FOR SUCTION & DELIVERY PORT (出/吸油口规格参数)

MODEL (型号)	a	b	c	d	e
H6VM55	50.8	23.8	M10X1.5P Dp20	19	75
H6VM80	57.2	27.8	M12X1.75P Dp20	25	80
H6VM107	57.2	27.8	M12X1.75P Dp20	25	80
H6VM160	66.7	31.8	M14X20.P Dp20	35	152

H6VM55/80/107/160 BENT AXIS TYPE DISPLACEMENT VARIABLE AXIAL PISTON MOTOR (H6VM55/80/107/160 弯轴式柱塞马达)

※ USABLE CIRCUMSTANCE (应用环境)
50°C, ISO VG46, -20~90°C

MODEL (型号)	DISPLACEMENT (cc/rev)		NORMAL PRESSURE (kg/cm ²)	TORQUE (Nm)	R.P.M		FLOW MAX (L/min)
	MAX	MIN			MIN	MAX	
H6VM55	55	35	350	300	4,450	7,000	244
H6VM80	80	51		437	3,900	6,150	312
H6VM107	107	70		629	3,500	5,750	403
H6VM160	160	101		874	3,100	4,900	496

● SPECIFICATIONS FOR H6VM80/115/160 (规格参数) (mm)

MODEL (型号)	A	B	C	D	E	F	G	H	J	K	L
H6VM55	220	90	270	65	25	67	∅30	∅125	∅160	∅135	150
H6VM80	236	95	290	72	25	75	∅35	∅140	∅180	∅135	165
H6VM107	250	100	310	83	32	80	∅39.5	∅160	∅200	∅175	190
H6VM160	287	107	370	90	32	92	∅45	∅180	∅224	∅175	210



MOTOR ASS'Y