

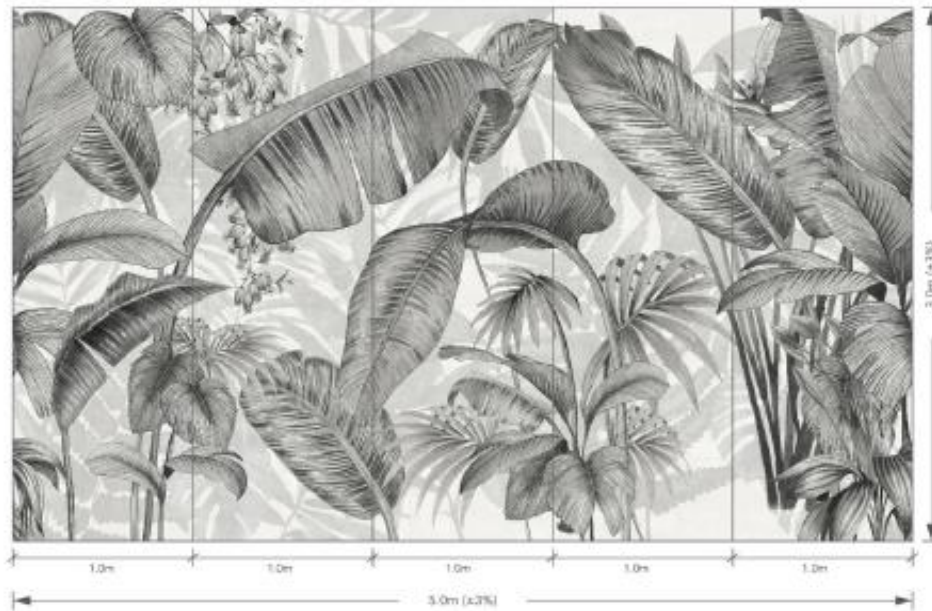
# Dt

DI HP LATEX INK  
PRINTABLE WALLPAPER



DI HP LATEX INK



**Specifications:**

<b>Item Shown :</b>	H156DP1001
<b>Pattern Name:</b>	Tropical Rainforests
<b>Contents:</b>	Print on Paper Weave
<b>Panel Width:</b>	1.05m (41.3") Untrimmed, Trims to 1.0m (39.3")
<b>Panel Height:</b>	3.04m (119.7") Untrimmed, Trim Pattern to Wall Height
<b>Repeat:</b>	No Vertical Repeat 5.0m (197") Horizontal
<b>Minimum Order:</b>	4 Panels
	* Sold in 1 panel increments, once minimum is met.
<b>Backing:</b>	Non woven backing
<b>Flame Retardancy:</b>	ASTM E84 CLASS A

**TROPICAL RAINFORESTS,**

The creation comes from a variety of tropical plants and flowers and leaves. The air in the tropical rainforest is exceptionally fresh, with a strong fragrance of trees.



H156DP1002



H156DP1003



H156DP1004



H156DP1005

DI HP LATEX INK





**Specifications:**

- Item Shown :** H156DP1009
- Pattern Name:** Deer Elf
- Contents:** Print on Paper Weave
- Panel Width:** 1.05m (41.3") Untrimmed, Trims to 0.85m (33.4")
- Panel Height:** 3.04m (119.7") Untrimmed, Trim Pattern to Wall Height
- Repeat:** No Vertical Repeat 5.95m (234.3") Horizontal
- Minimum Order:** 4 Panels  
\* Sold in 1 panel increments, once minimum is met.
- Backing:** Non woven backing
- Flame Retardancy:** ASTM E84 CLASS A

**DEER ELF,**

Deer live in a variety of biomes, ranging from tundra to the tropical rainforest. By affinity with this animal, you have the power to deal with challenges with grace.



H156DP1006



H156DP1007

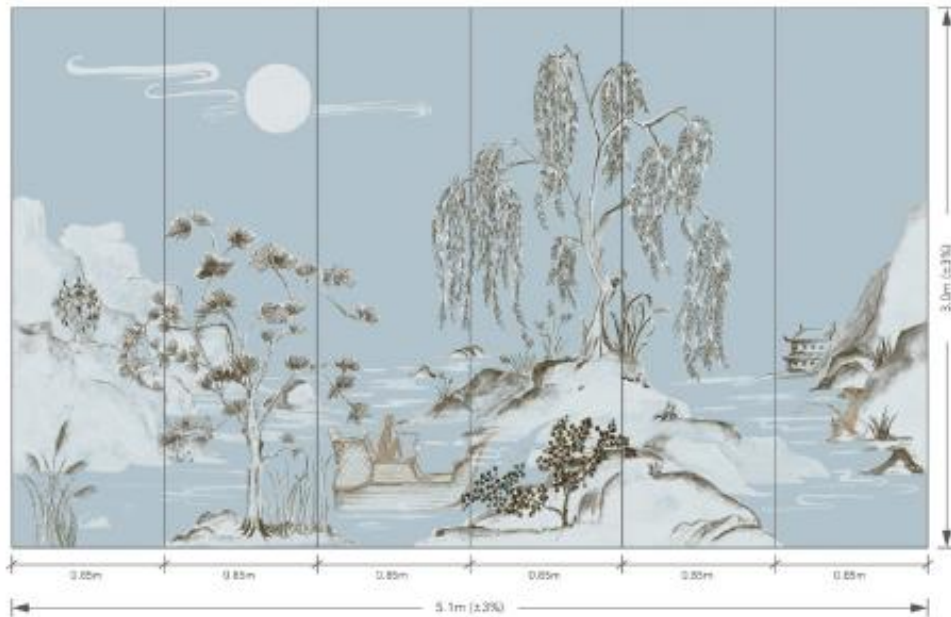


H156DP1008

DI HP LATEX INK



Dt

**Specifications:**

<b>Item Shown :</b>	H156DP1012
<b>Pattern Name:</b>	Reflected In The Moonlight
<b>Contents:</b>	Print on Abaca
<b>Panel Width:</b>	0.915m (36") Untrimmed, Trims to 0.85m (33.4")
<b>Panel Height:</b>	3.04m (119.7") Untrimmed, Trim Pattern to Wall Height
<b>Repeat:</b>	No Vertical Repeat 5.1m (200.7") Horizontal
<b>Minimum Order:</b>	4 Panels * Sold in 1 panel increments, once minimum is met.
<b>Backing:</b>	Non woven backing
<b>Flame Retardancy:</b>	ASTM E84 CLASS A

**REFLECTED IN THE MOONLIGHT,**

The Inspiration comes from a Chinese poem "AUTUMN EVENING IN THE MOUNTAINS", After rain the empty mountain, Stands autumnal in the evening, Moonlight in its groves of pine, Stones of crystal in its brooks.



H156DP1010



H156DP1011



H156DP1013

DI HP LATEX INK




**Specifications:**

<b>Item Shown :</b>	H156DP1018
<b>Pattern Name:</b>	Fairy Forest
<b>Contents:</b>	Print on Paper Weave
<b>Panel Width:</b>	1.05m (41.3") Untrimmed, Trims to 1.0m (39.3")
<b>Panel Height:</b>	3.04m (119.7") Untrimmed, Trim Pattern to Wall Height
<b>Repeat:</b>	No Vertical Repeat 4.0m (157.5") Horizontal
<b>Minimum Order:</b>	4 Panels * Sold in 1 panel increments, once minimum is met.
<b>Backing:</b>	Non woven backing
<b>Flame Retardancy:</b>	ASTM E84 CLASS A

**FAIRY FOREST,**

The creation comes from the shade of the riverside trees, and the reflections of the scattered shrubs are radiant. Trees are simply made of organic shapes of color and value.



H156DP1014



H156DP1015



H156DP1016



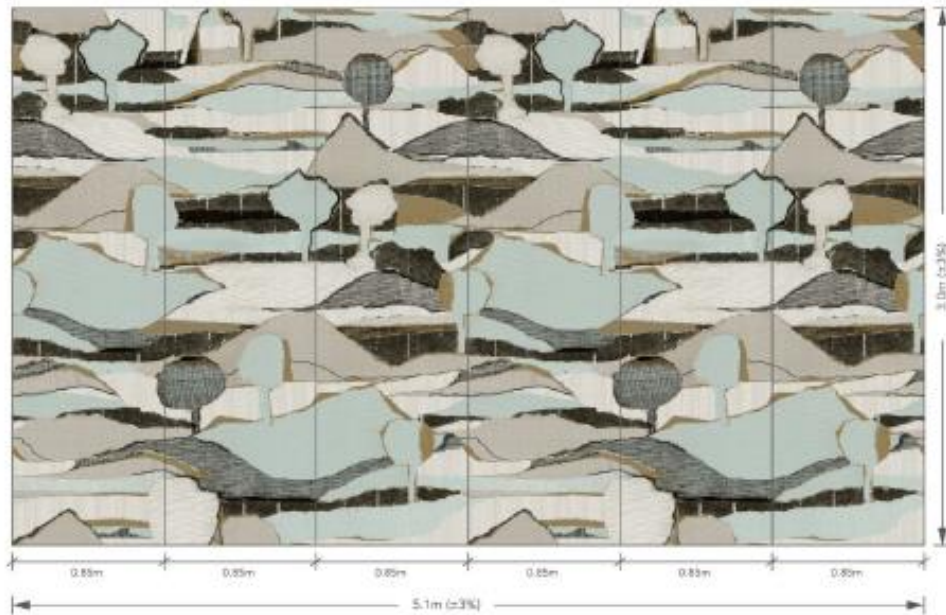
H156DP1017



H156DP1019

DI HP LATEX INK



**Specifications:**

<b>Item Shown :</b>	H156DP1022
<b>Pattern Name:</b>	Mountains
<b>Contents:</b>	Print on Abaca
<b>Panel Width:</b>	0.915m (36") Untrimmed, Trims to 0.85m (33.4")
<b>Panel Height:</b>	3.04m (119.7") Untrimmed, Trim Pattern to Wall Height
<b>Repeat:</b>	No Vertical Repeat 5.1m (200.7") Horizontal
<b>Minimum Order:</b>	4 Panels
	* Sold in 1 panel increments, once minimum is met.
<b>Backing:</b>	Non woven backing
<b>Flame Retardancy:</b>	ASTM E84 CLASS A

**MOUNTAINS,**

The painting adopts the natural color of corrugated paper. The whole picture and the black mountains form a hierarchical relationship of black, white and gray, and are arranged in four directions. It has a sense of rhythm without clutter, and the level of detail is simple and rich.



H156DP1020

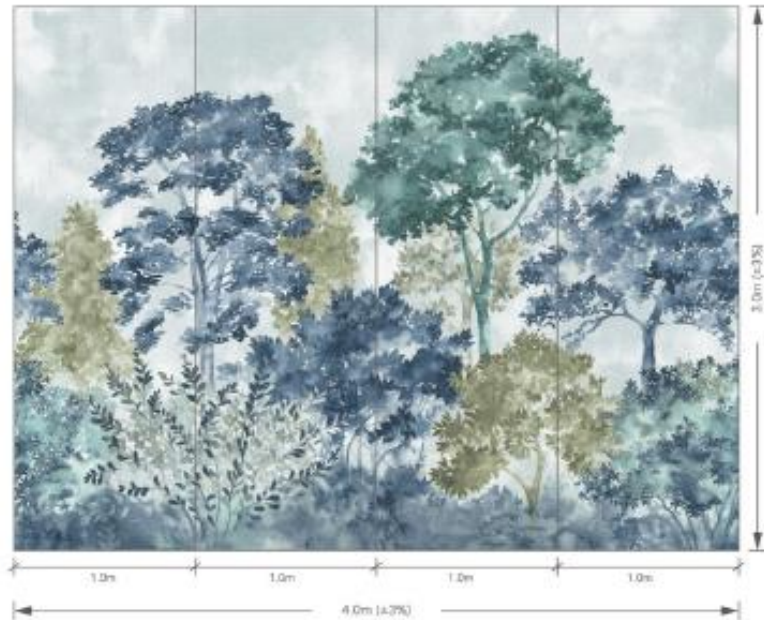


H156DP1021

DI HP LATEX INK



DI



**Specifications:**

- Item Shown :** H156DP1025
- Pattern Name:** Watercolor Tree
- Contents:** Print on Paper Weave
- Panel Width:** 1.05m (41.3") Untrimmed, Trims to 1.0m (39.3")
- Panel Height:** 3.04m (119.7") Untrimmed, Trim Pattern to Wall Height
- Repeat:** No Vertical Repeat 4.0m (157.5") Horizontal
- Minimum Order:** 4 Panels  
\* Sold in 1 panel increments, once minimum is met.
- Backing:** Non woven backing
- Flame Retardancy:** ASTM E84 CLASS A

**WATERCOLOR TREE,**

The creation comes from the shade of the riverside trees, and the reflections of the scattered shrubs are radiant.



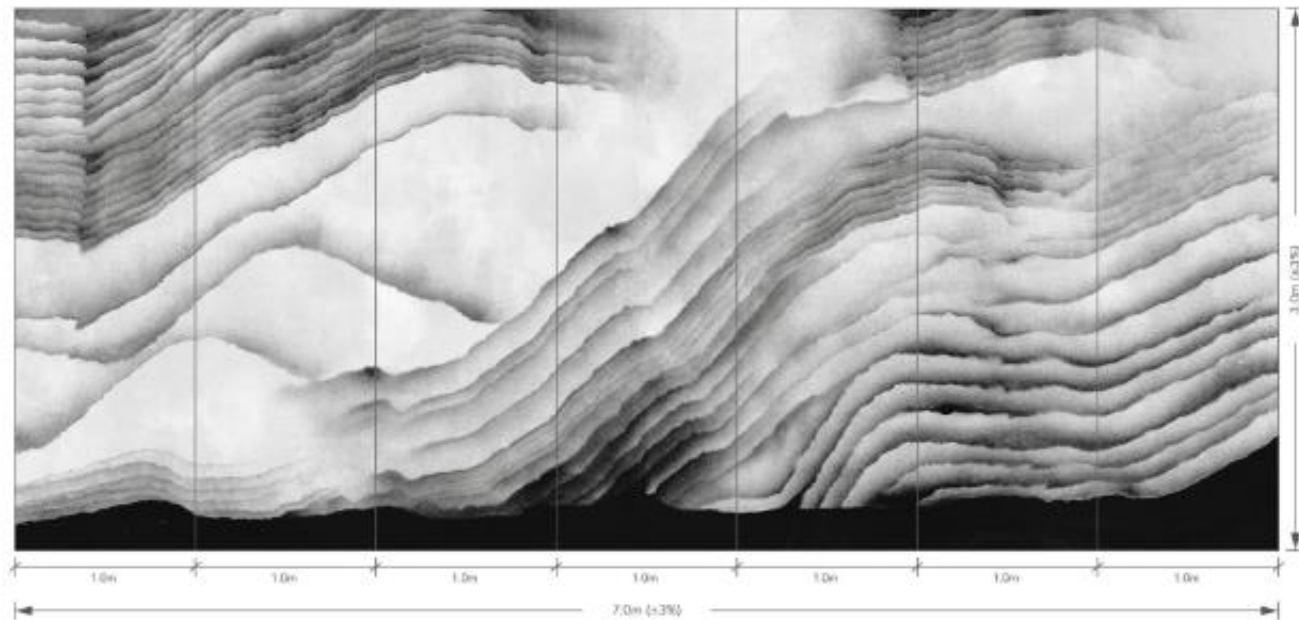
H156DP1023



H156DP1024

DI HP LATEX INK





**Specifications:**

- Item Shown :** H156DP1026
- Pattern Name:** Cloudy Peaks
- Contents:** Print on Paper Weave
- Panel Width:** 1.05m (41.3") Untrimmed,  
Trims to 1.0m (39.3")
- Panel Height:** 3.04m (119.7") Untrimmed,  
Trim Pattern to Wall Height
- Repeat:** No Vertical Repeat 7.0m (275.6") Horizontal
- Minimum Order:** 4 Panels \* Sold in 1 panel increments,  
once minimum is met.
- Backing:** Non woven backing
- Flame Retardancy:** ASTM E84 CLASS A

**CLOUDY PEAKS,**

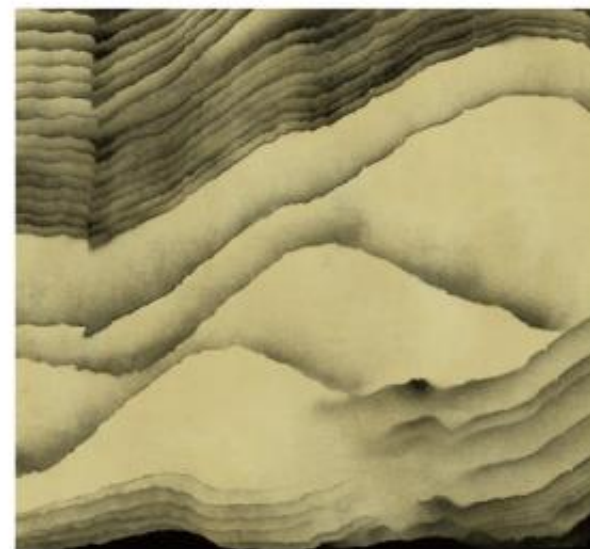
Inspired by cloudy mountains, when you finishing a long day's trek, and you were exhausted. Walking to your room when you first saw the mountain, it was quite a sight.



H156DP1027



H156DP1028

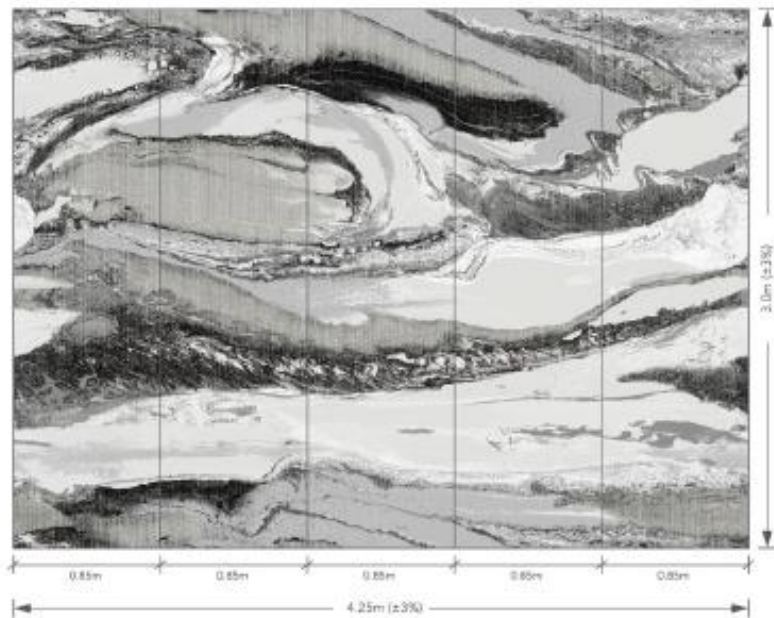


H156DP1029

DI HP LATEX INK



Dt



**Specifications:**

- Item Shown :** H156DP1031
- Pattern Name:** Palette
- Contents:** Print on Cork
- Panel Width:** 0.915m (36") Untrimmed, Trims to 0.85m (33.4")
- Panel Height:** 3.04m (119.7") Untrimmed, Trim Pattern to Wall Height
- Repeat:** No Vertical Repeat 4.25m (167.3") Horizontal
- Minimum Order:** 4 Panels  
\* Sold in 1 panel increments, once minimum is met.
- Backing:** Non woven backing
- Flame Retardancy:** ASTM E84 CLASS A

**PALETTE,**

Inspired by the natural flowing liquid and volcanic lava flow, it is artificially transformed into a palette of artistic sense, which is closer to the natural state in form of expression, and achieves artistic abstraction processing, presenting visual beauty and decorative sense.



H156DP1030



H156DP1032



H156DP1033

DI HP LATEX INK





**Specifications:**

- Item Shown :** H156DP1036
- Pattern Name:** Egret Park
- Contents:** Print on Cork
- Panel Width:** 0.915m (36") Untrimmed, Trims to 0.85m (33.4")
- Panel Height:** 3.04m (119.7") Untrimmed, Trim Pattern to Wall Height
- Repeat:** No Vertical Repeat 5.95m (234.3") Horizontal
- Minimum Order:** 4 Panels  
\* Sold in 1 panel increments, once minimum is met.
- Backing:** Non woven backing
- Flame Retardancy:** ASTM E84 CLASS A

**EGRET PARK,**

The implicit beauty of the East will always only mean unspeakable, a careless one will penetrate deep into the bone marrow, leaving only the mark of if there is nothing.



H156DP1034



H156DP1035



H156DP1037

DI HP LATEX INK




**Specifications:**

<b>Item Shown :</b>	H156DP1041
<b>Pattern Name:</b>	Twine
<b>Contents:</b>	Print on Paper Weave
<b>Panel Width:</b>	1.05m (41.3") Untrimmed, Trims to 1.0m (39.3")
<b>Panel Height:</b>	3.04m (119.7") Untrimmed, Trim Pattern to Wall Height
<b>Repeat:</b>	No Vertical Repeat 4.0m (157.5") Horizontal
<b>Minimum Order:</b>	4 Panels * Sold in 1 panel increments, once minimum is met.
<b>Backing:</b>	Non woven backing
<b>Flame Retardancy:</b>	ASTM E84 CLASS A

**TWINE,**

The creation draws on the hanging branches and leaves in nature, extracting the shape of its night silhouette, leaving white and breathable between the branches and leaves.



H156DP1038



H156DP1039



H156DP1040

DI HP LATEX INK





## Specifications:

Item Shown :	H156DP1045
Pattern Name:	Owl under the leaves
Contents:	Print on Cork
Panel Width:	0.915m (36") Untrimmed, Trims to 0.85m (33.4")
Panel Height:	3.04m (119.7") Untrimmed, Trim Pattern to Wall Height
Repeat:	No Vertical Repeat 5.1m (200.7") Horizontal
Minimum Order:	4 Panels
	* Sold in 1 panel increments, once minimum is met.
Backing:	Non woven backing
Flame Retardancy:	ASTM E84 CLASS A

**OWL UNDER THE LEAVES,**

In the dense and quiet foliage, there are clever owls hidden, adding a balance from time to time when they are still and moving. In the eyes of the designer, this is the intention of coexisting with nature.



H156DP1042



H156DP1043



H156DP1044



H156DP1046

Printable Substrate



H156TF3372 Width: 0.915m 100% Silk



H156NA0001 Width: 0.915m 100% Abaca



H156NS1014 Width: 0.915m 100% Sisal



H156NP6000 Width: 0.915m 100% Paper Weave



H156NA0023 Width: 0.915m 100% Abaca



H156NS2011 Width: 0.915m 100% Sisal



H156NH6049 Width: 1.1m 100% Polyester



H156NH6046 Width: 1.06m 100% Polyester



H156NP6167 Width: 0.915m 100% Paper Weave



H156NH2056 Width: 0.915m 100% Hemp



H156NP6705 Width: 0.915m 100% Paper Weave



H156NQ8310 Width: 0.915m 100% Cork



H156NQ8319 Width: 0.915m 100% Cork



H156NH2112 Width: 0.915m 100% Hemp

DI HP LATEX INK





## **Design Installation Concept Store**

D35 Room, RCA Block D,  
21/119 Soi Soonvijai, Bangkok,  
Huey Kwang, Bangkok 10310 Thailand

Tel. +66 2 203 0905

Fax. +66 2 203 0918

Website. [www.diconcept.bz](http://www.diconcept.bz)

Line ID. @di.concept.store

