

# Self-Priming Pump HS+ Series

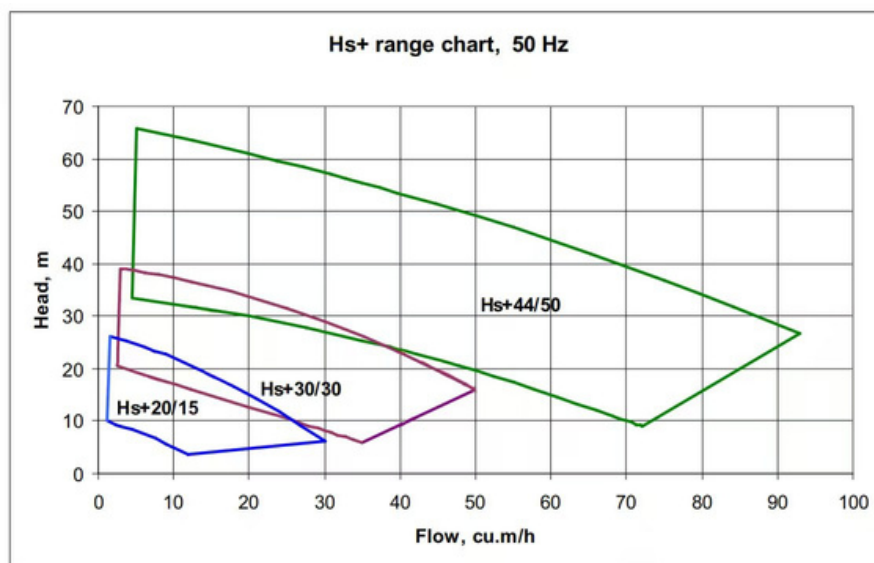
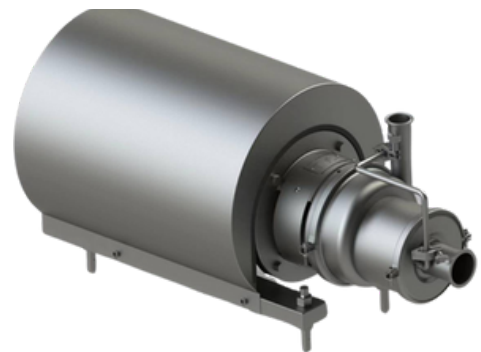


## Application

"The HS+ Series self-priming pump is engineered for high-efficiency liquid transfer, even when handling air-liquid mixtures. It is ideal for CIP return applications, offering reliable performance with low operating noise. Compared to the standard HS Series, the HS+ model delivers superior energy savings while maintaining a large flow capacity of up to 90 m<sup>3</sup>/h and an impressive outlet pressure of up to 60 m. Designed for demanding hygienic processes, it ensures consistent flow, high pressure, and energy efficiency in a compact and durable construction."

## Technical specifications

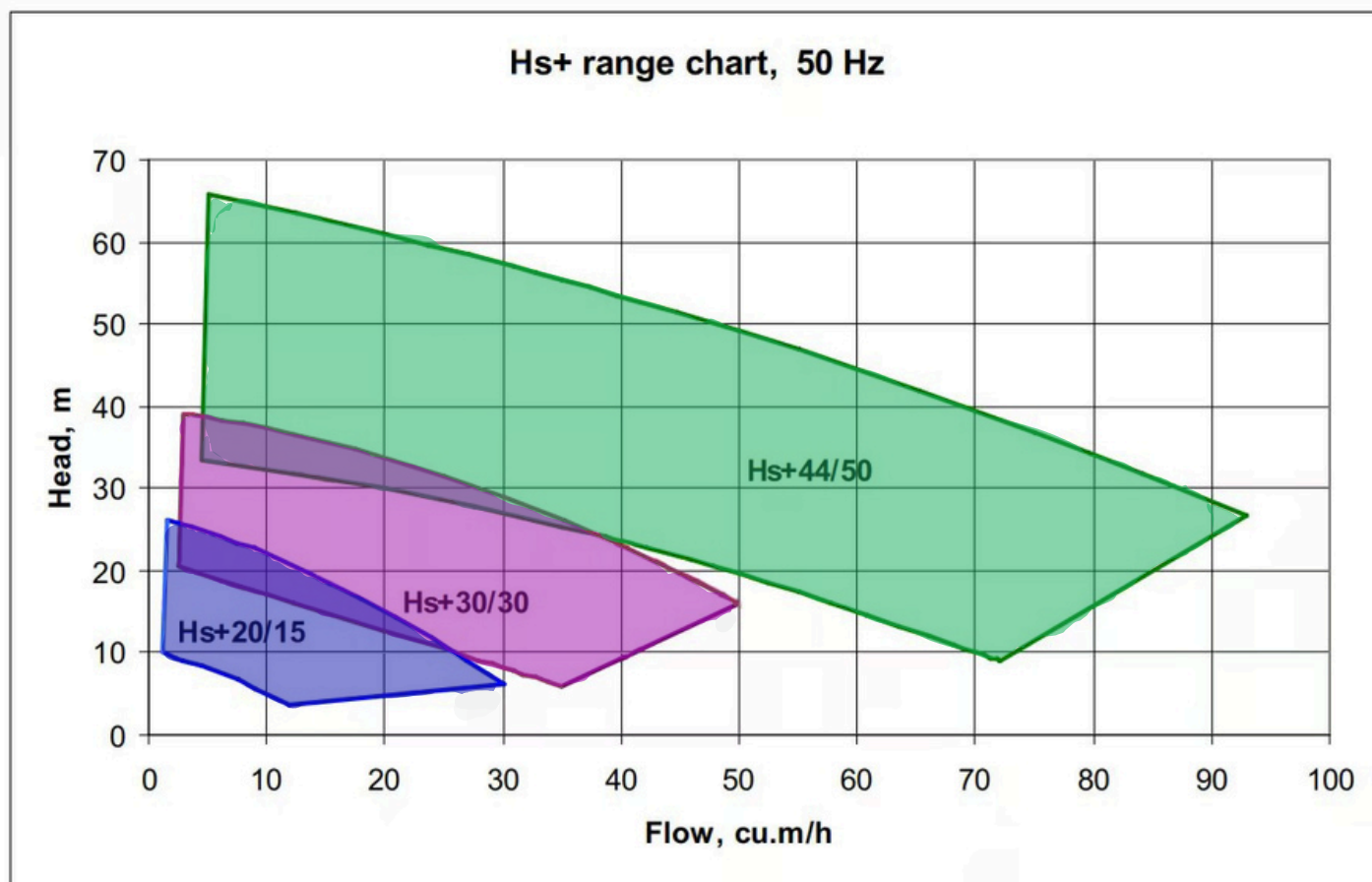
Max flow rate	92 m <sup>3</sup> /h
Max head	70 m
Connection	ISO2037 Clamp   SMS Union
Material of the part in contact with liquid	Stainless steel AISI 316L (1.4404 )
Maximum working pressure	10 bar
Working temperature	-10°C ~ 140°C
Max speed	2900 rpm
Motor brand	WEG or ABB
Voltage/Frequency	380V/50Hz
Motor protection level	IP55
Motor energy efficiency grade	IE3   IE4
Mechanical seal	Single mechanical seal   Double mechanical seal
Mechanical seal material	Silicon carbide   Tungsten carbide
Sealing ring material	EPDM   FKM   FFKM



**PHONE**  
+66 2150 1968  
+66 64 585 4462

**MAIL**  
info@renoxss.com

**ADDRESS**  
55/46 Biggerland Moo 3  
Lamluka, Lamluka,  
Pathumthani, Thailand 12150

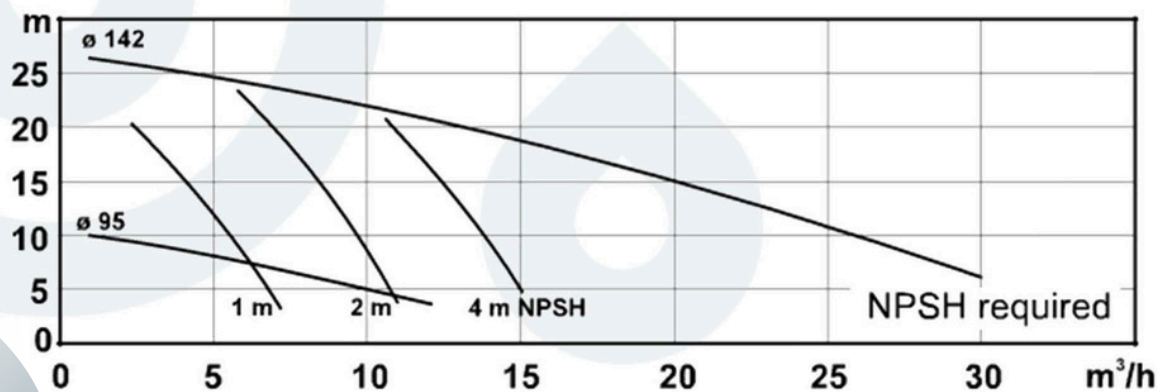
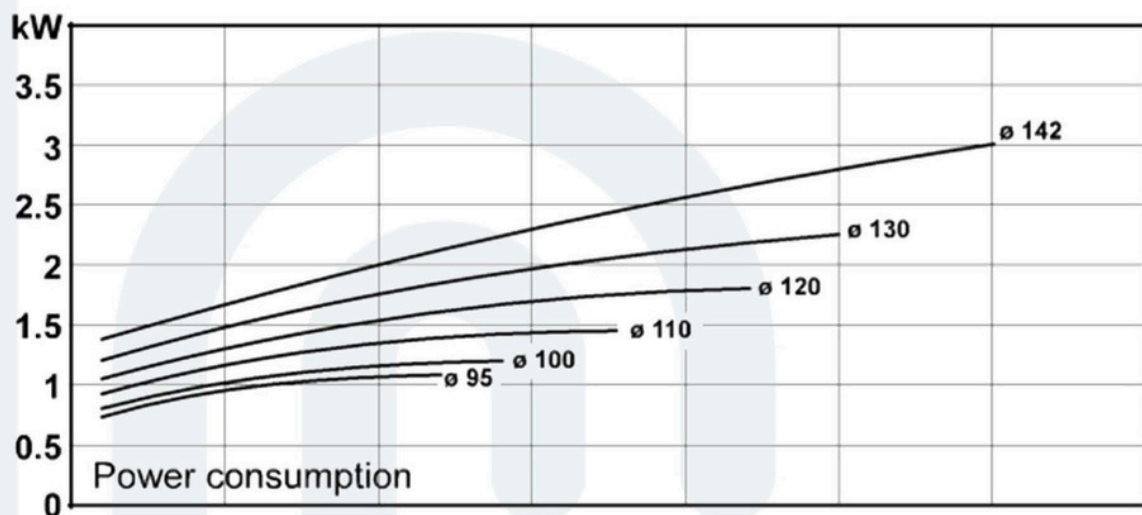
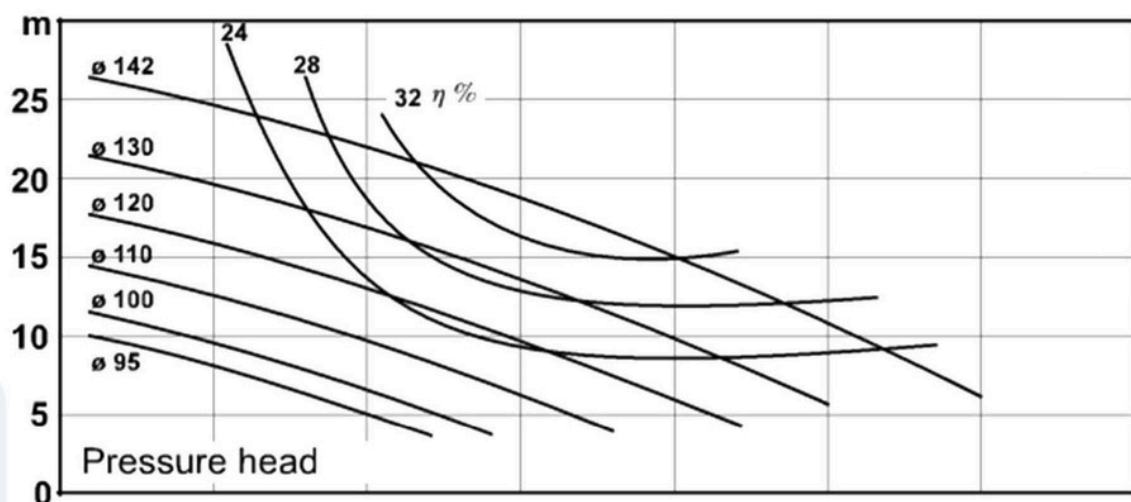


## Performance Curve

### HS+ 20/15

Speed: **n=2900-1,50Hz**  
 Impeller: **Max.dia.142mm**  
 Pumpinlet: **Min.dia. 95 mm**  
 Pumpoutlet: **63,5mm**  
**51mm**

Performance data refer to water at 20°C  
 Permissible tolerance  $\pm 5\%$

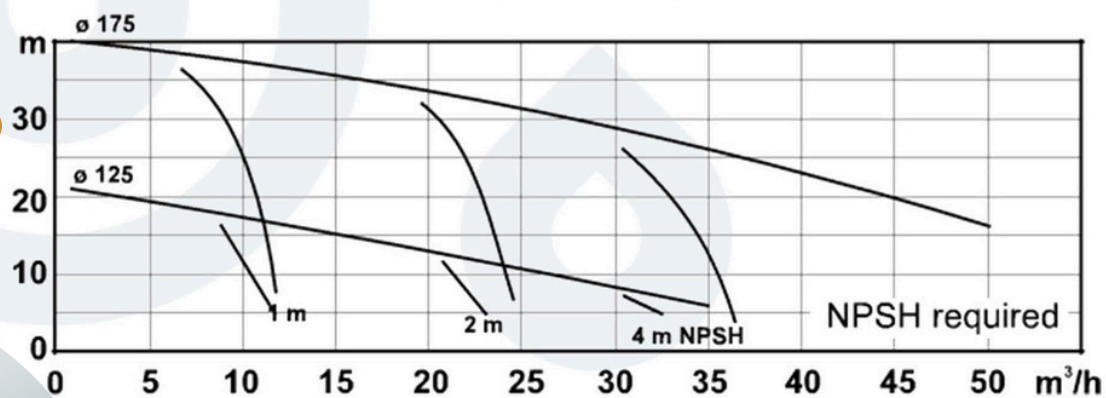
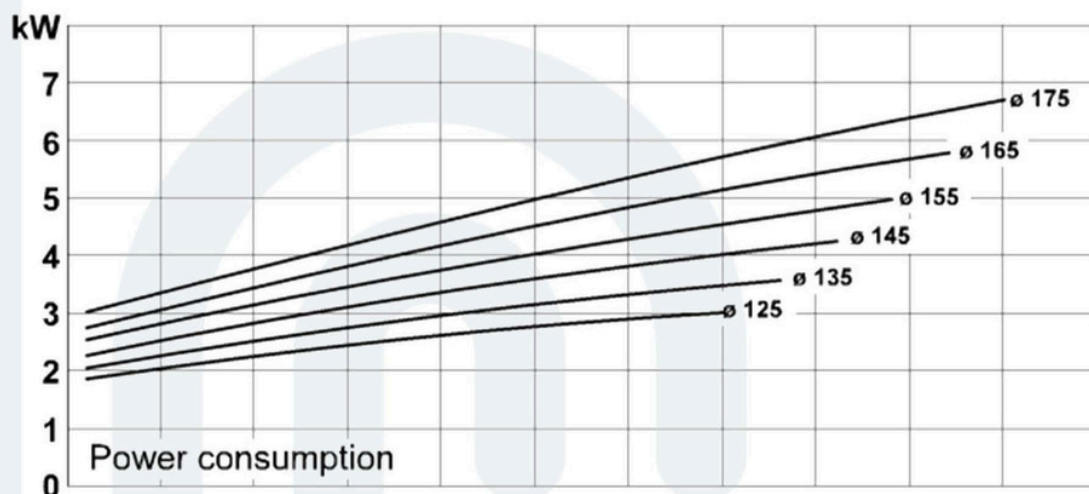
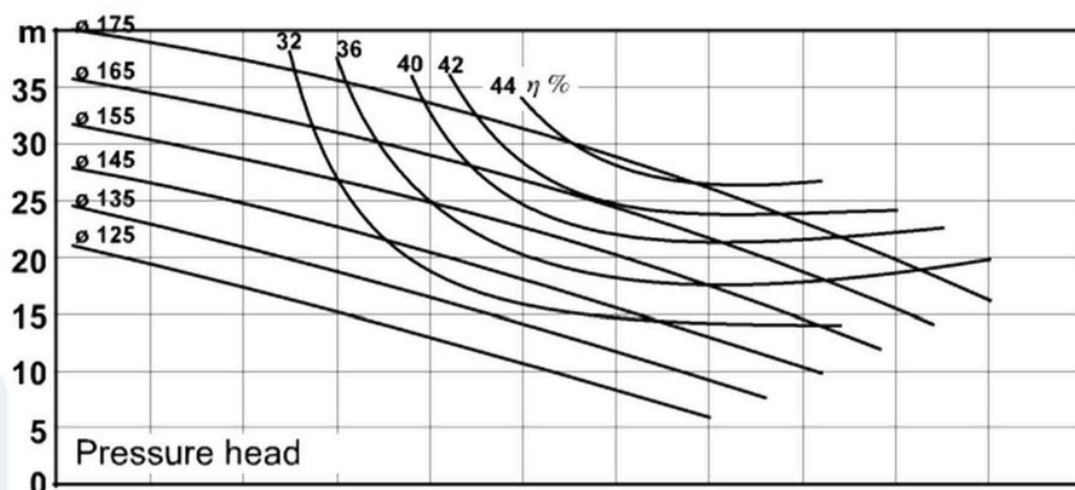


## Performance Curve

### HS+ 30/30

Speed: **n=2900-1,50Hz**  
 Impeller: **Max.dia.175mm**  
**Min.dia. 125 mm**  
 Pumpinlet: **63,5mm**  
 Pumpoutlet: **51mm**

Performance data refer to water at 20°C  
 Permissible tolerance  $\pm 5\%$



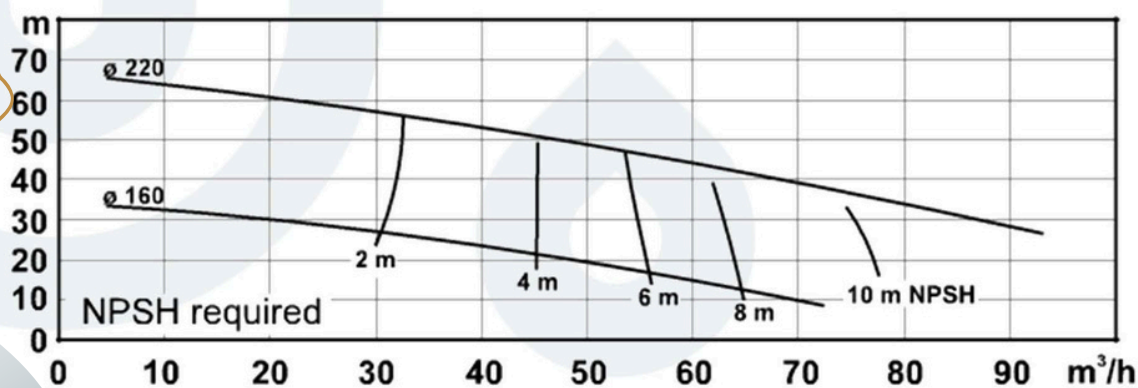
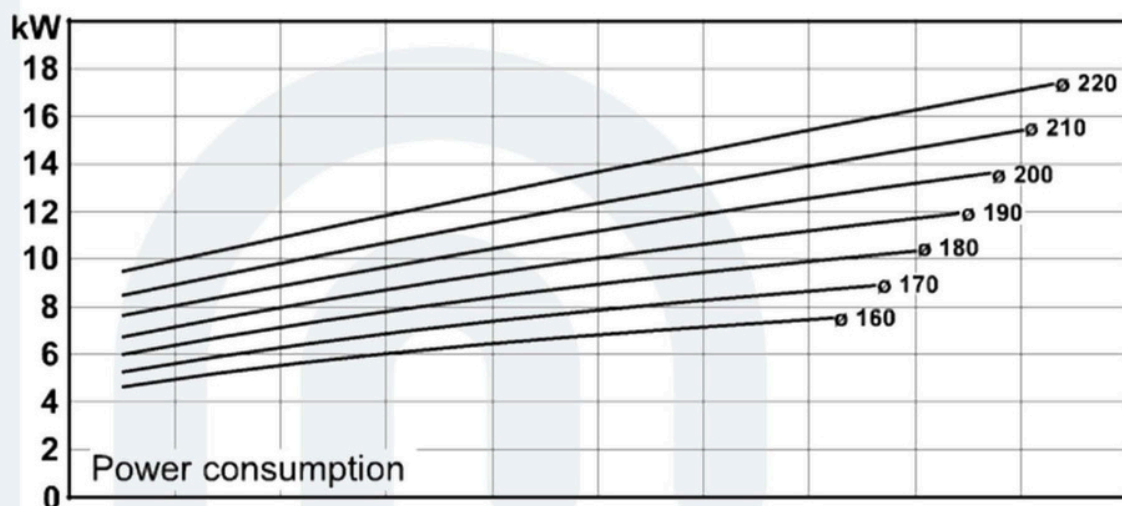
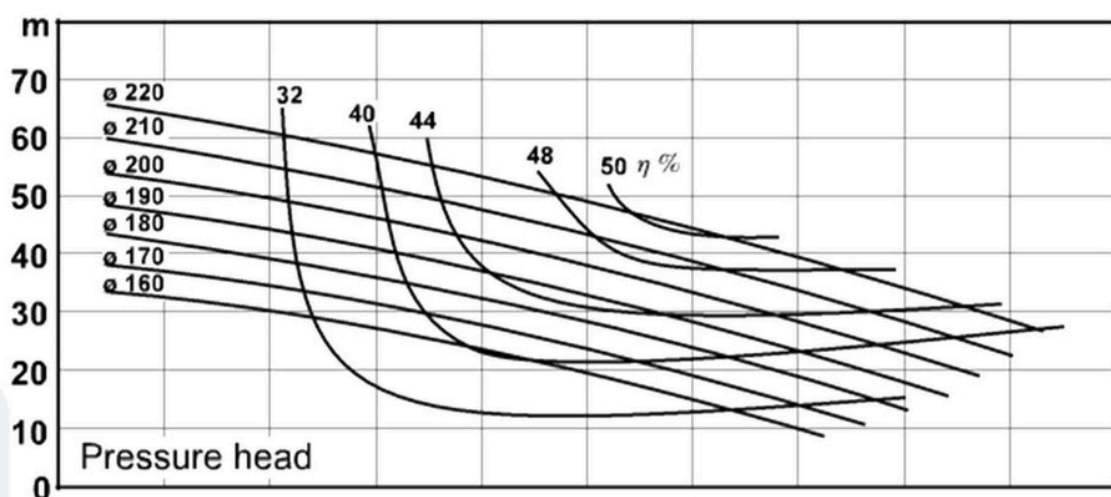


## Performance Curve

### HS+ 44/50

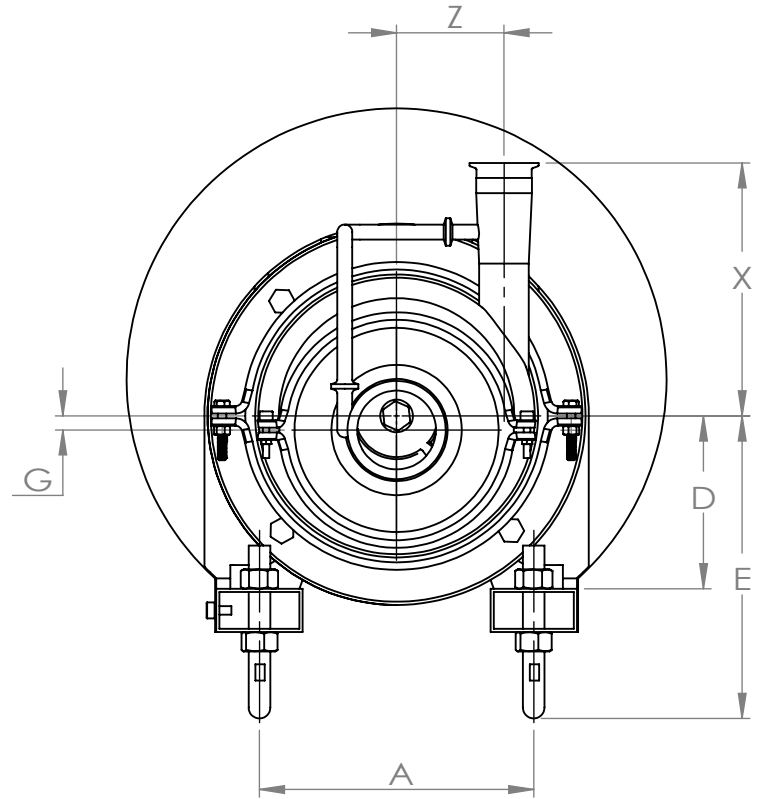
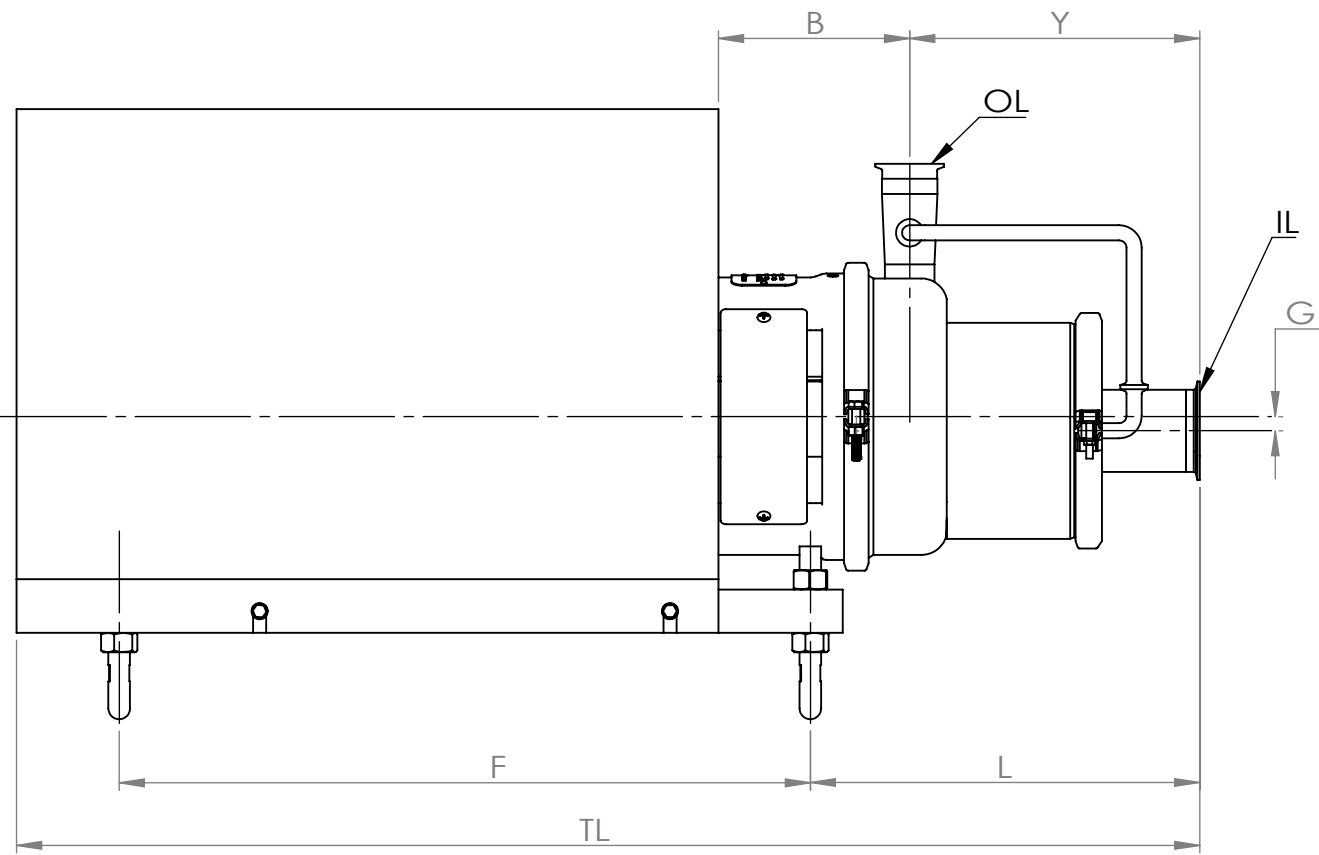
Speed: **n=2900-1,50Hz**  
 Impeller: **Max.dia.220mm**  
 Pumpinlet: **Min.dia. 160 mm**  
 Pumpoutlet: **76mm 51mm**

Performance data refer to water at 20°C  
 Permissible tolerance  $\pm 5\%$





PRODUCT DIMENSIONS  
HS+ Series

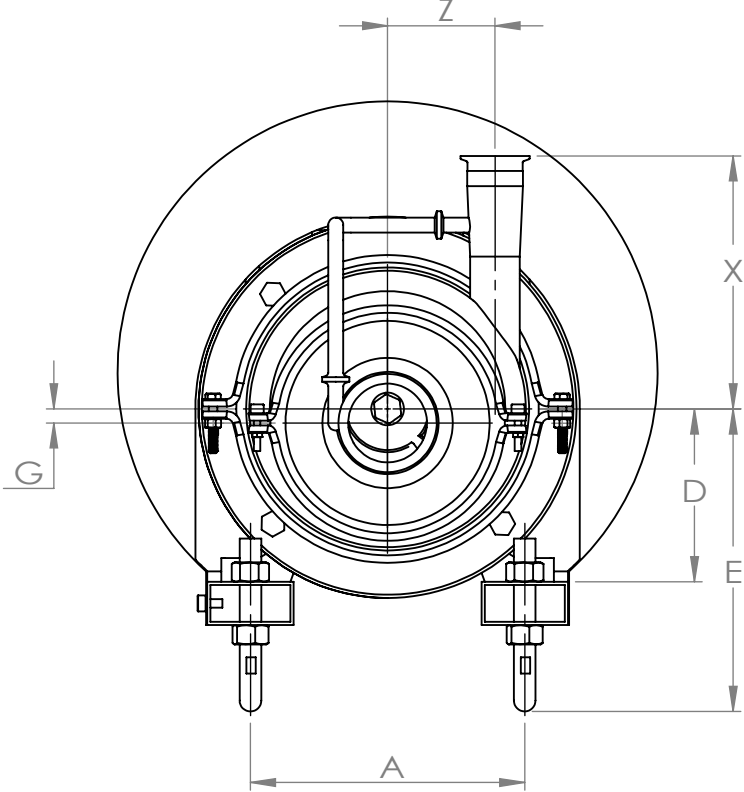
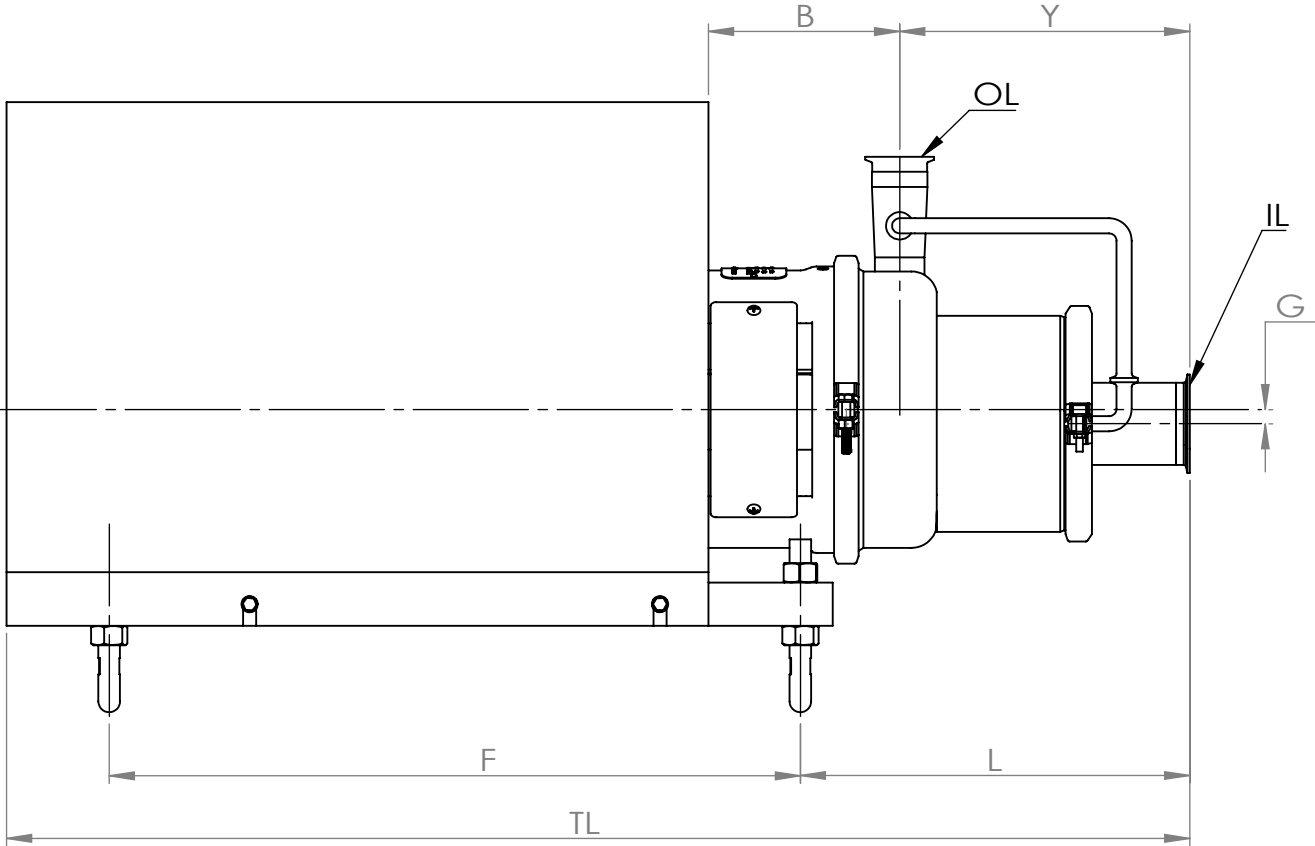


PUMP	MOTOR FRAME-2Poles	B	G	OL	IL	Y	F	L	Z	X	D	A	E	TL
HS+20-15	80 (1.1kW)	145	8	2"	2.5"	185	320	295.5	65.5	229.2	80	125	193±20	640
HS+20-15	90S/L (1.5/2.2kW)	145	8	2"	2.5"	185	320	295.5	65.5	229.2	90	140	203±20	660
HS+30-30	100L (3kW)	132.7	10	2"	2.5"	185	380	291.6	82.6	242	100	160	213±20	715
HS+30-30	112M (4kW)	132.7	10	2"	2.5"	185	380	291.6	82.6	242	112	190	205±20	715
HS+30-30	132S/M (5.5/7.5/9.2kW)	132.7	10	2"	2.5"	185	420	291.6	82.6	242	132	216	225±20	800
HS+44-50	160M/L (11/15/18.5kW)	176.9	13	2"	3"	268.5	640	360.5	99.5	234.2	160	254	280±30	1095

REMARKS: ALL DIMENSIONS ARE IN *Millimeter* , UNLESS OTHERWISE SPECIFIED.



PRODUCT DIMENSIONS  
HS+ Series

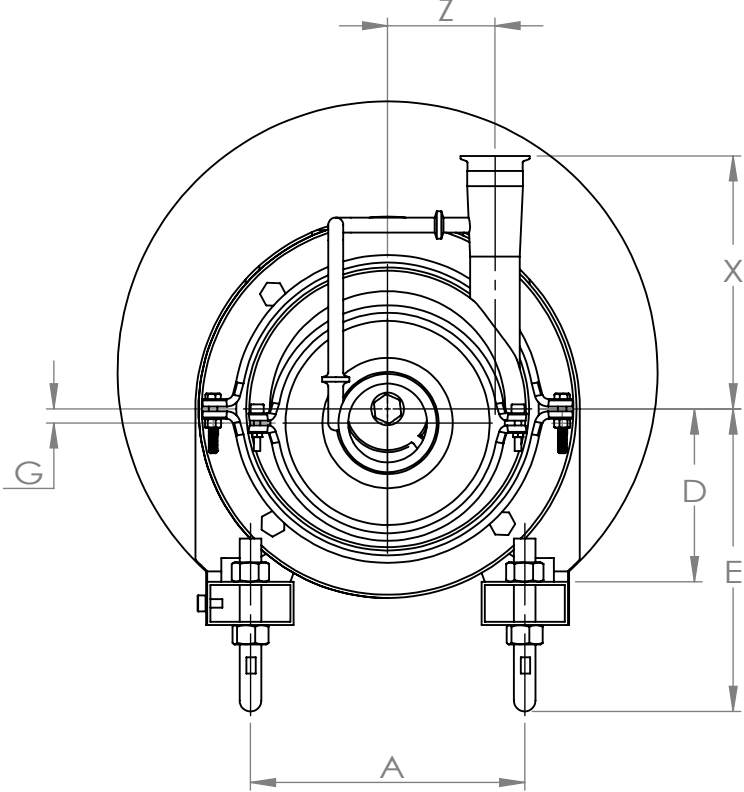
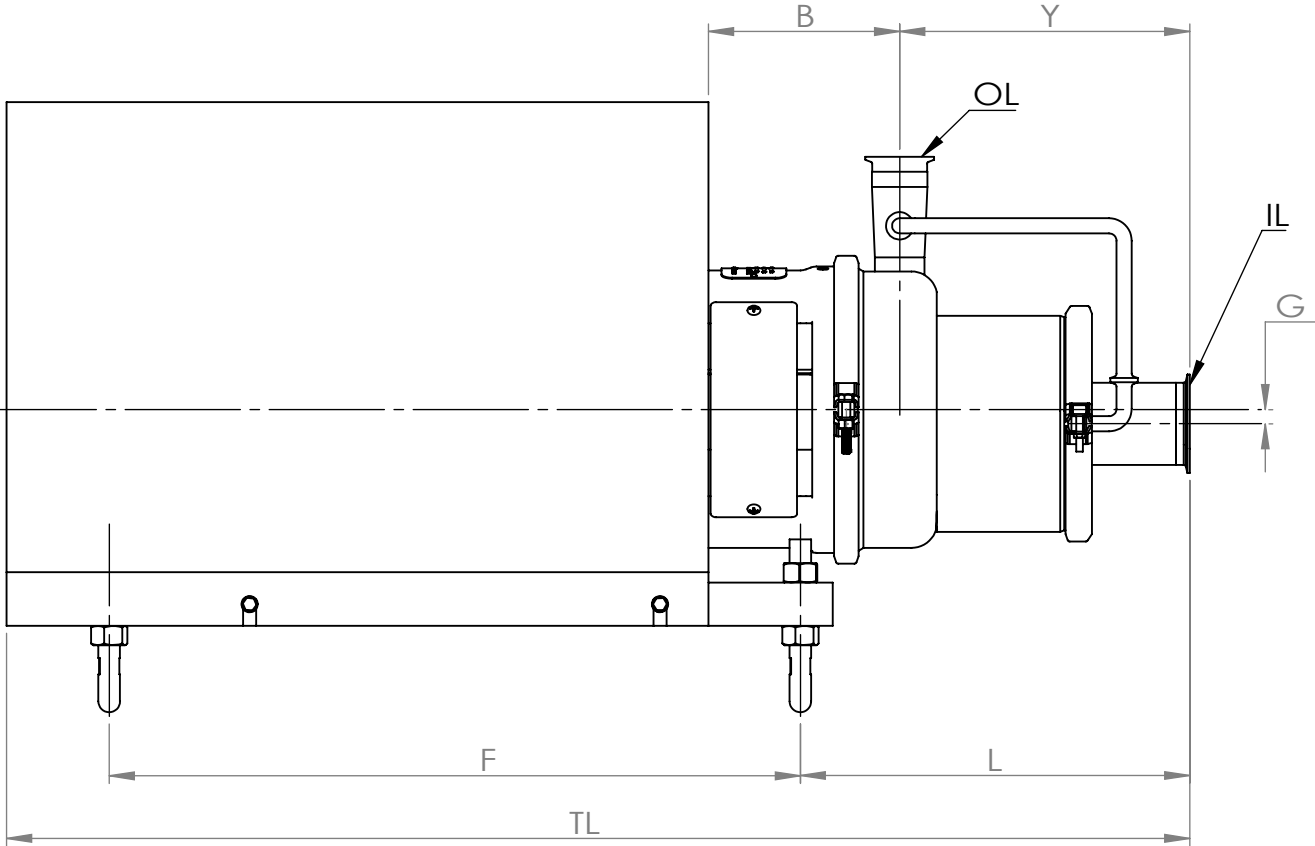


PUMP	MOTOR FRAME-2Poles	B	G	OL	IL	Y	F	L	Z	X	D	A	E	TL
HS+20-15	80 (1.1kW)	145	8	2"	2.5"	185	320	295.5	65.5	229.2	80	125	193±20	640
HS+20-15	90S/L (1.5/2.2kW)	145	8	2"	2.5"	185	320	295.5	65.5	229.2	90	140	203±20	660
HS+30-30	100L (3kW)	132.7	10	2"	2.5"	185	380	291.6	82.6	242	100	160	213±20	715
HS+30-30	112M (4kW)	132.7	10	2"	2.5"	185	380	291.6	82.6	242	112	190	205±20	715
HS+30-30	132S/M (5.5/7.5/9.2kW)	132.7	10	2"	2.5"	185	420	291.6	82.6	242	132	216	225±20	800
HS+44-50	160M/L (11/15/18.5kW)	176.9	13	2"	3"	268.5	640	360.5	99.5	234.2	160	254	280±30	1095

REMARKS: ALL DIMENSIONS ARE IN *Millimeter* , UNLESS OTHERWISE SPECIFIED.



PRODUCT DIMENSIONS  
HS+ Series



PUMP	MOTOR FRAME-2Poles	B	G	OL	IL	Y	F	L	Z	X	D	A	E	TL
HS+20-15	80 (1.1kW)	145	8	2"	2.5"	185	320	295.5	65.5	229.2	80	125	193±20	640
HS+20-15	90S/L (1.5/2.2kW)	145	8	2"	2.5"	185	320	295.5	65.5	229.2	90	140	203±20	660
HS+30-30	100L (3kW)	132.7	10	2"	2.5"	185	380	291.6	82.6	242	100	160	213±20	715
HS+30-30	112M (4kW)	132.7	10	2"	2.5"	185	380	291.6	82.6	242	112	190	205±20	715
HS+30-30	132S/M (5.5/7.5/9.2kW)	132.7	10	2"	2.5"	185	420	291.6	82.6	242	132	216	225±20	800
HS+44-50	160M/L (11/15/18.5kW)	176.9	13	2"	3"	268.5	640	360.5	99.5	234.2	160	254	280±30	1095

REMARKS: ALL DIMENSIONS ARE IN *Millimeter* , UNLESS OTHERWISE SPECIFIED.