

บริษัท ซีที อีเลคทริก ซัพพลาย จำกัด
CT ELECTRIC SUPPLY CO., LTD.

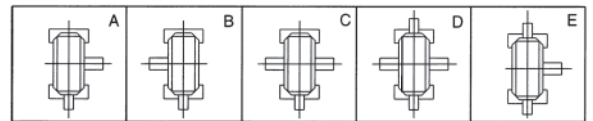
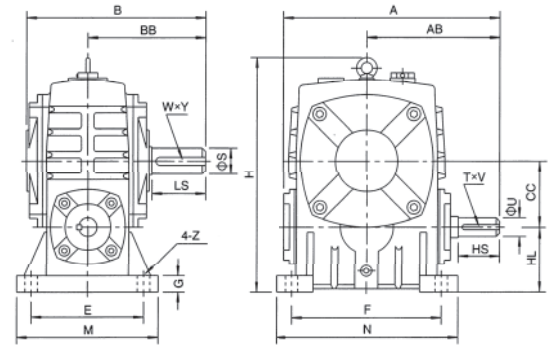
โทร : 02-550-9555

KIMPO

WORM GEAR REDUCER



Series KB

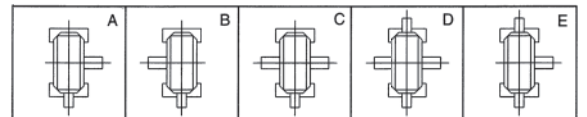
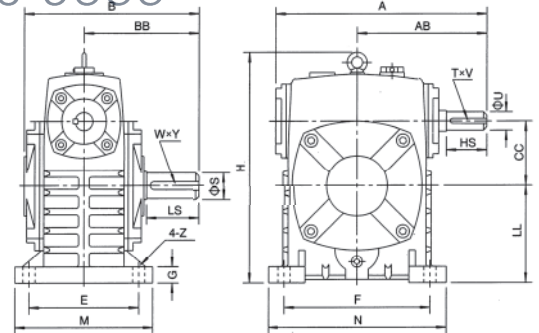


size	ratio	A	AB	B	BB	CC	H	HL	M	N	E	F	G	Z	input shaft			output shaft			weight(kg)
															HS	U	TXV	LS	S	WXY	
40	10	143	87	114	74	40	138	40	90	100	70	80	13	10	25	12	4X2.5	28	14	5X3	4
50		175	107	150	97	50	173	50	120	140	95	110	15	12	30	12	4X2.5	40	17	5X3	7
60		198	122	168	112	60	204	60	130	150	105	120	20	12	40	15	5X3	50	22	7X4	10
70	15	231	140	194	131	70	236	70	150	190	115	150	20	15	40	18	5X3	60	28	7X4	15
80		261	160	214	142	80	268	80	170	220	135	180	20	15	50	22	7X4	65	32	10X4.5	20
100	25	322	190	254	169	100	329	100	190	270	165	220	25	15	50	25	7X4	75	38	10X4.5	35
120		381	229	282	190	120	450	120	230	320	180	260	30	18	65	30	7X4	85	45	12X4.5	60
135	30	433	260	317	210	135	480	135	250	350	200	290	30	18	75	35	10X4.5	95	55	15X5	80
147		439	264	324	212	147	501	123	250	350	200	280	32	18	80	35	10X4.5	95	55	15X5	90
155	50	504	302	382	252	155	534	135	275	390	220	320	35	21	85	40	10X4.5	110	60	15X5	110
175		545	325	402	262	175	600	160	310	430	250	350	40	21	85	45	12X4.5	110	65	18X6	150
200	60	587	350	467	305	200	667	175	360	480	290	390	40	24	95	50	15X5	125	70	20X7	215
250		705	420	552	360	250	800	200	460	560	380	480	45	28	110	60	15X5	155	90	24X8	360

โทร : 02 550 9555



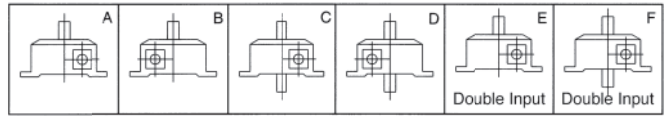
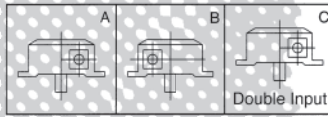
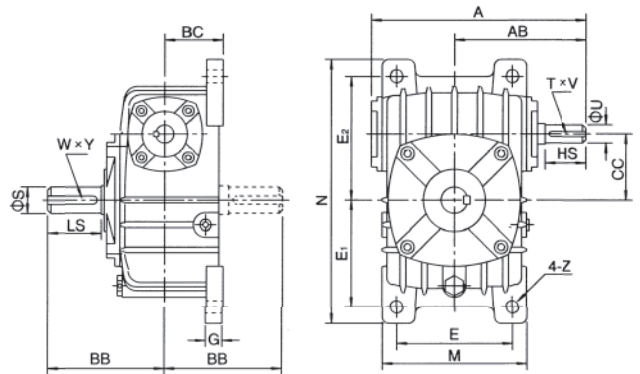
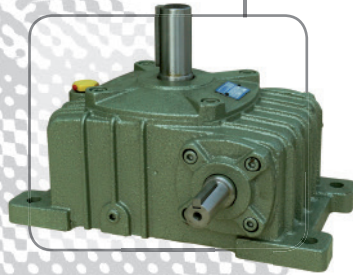
Series KA



size	ratio	A	AB	B	BB	CC	H	HL	M	N	E	F	G	Z	input shaft			output shaft			weight(kg)
															HS	U	TXV	LS	S	WXY	
40	10	143	87	114	74	40	141	60	90	100	70	80	13	10	25	12	4X2.5	28	14	5X3	4
50		175	107	150	97	50	180	80	120	140	95	110	15	12	30	12	4X2.5	40	17	5X3	7
60		198	122	168	112	60	207	90	130	150	105	120	20	12	40	15	5X3	50	22	7X4	10
70	15	231	140	194	131	70	238	105	150	190	115	150	20	15	40	18	5X3	60	28	7X4	15
80		261	160	214	142	80	270	120	170	220	135	180	20	15	50	22	7X4	65	32	10X4.5	20
100	25	322	190	254	169	100	331	150	190	270	155	220	25	15	50	25	7X4	75	38	10X4.5	35
120		381	229	282	190	120	423	180	230	320	180	260	30	18	65	30	7X4	85	45	12X4.5	60
135	30	433	260	317	210	135	482	215	250	350	200	290	30	18	75	35	10X4.5	95	55	15X5	80
147		439	264	324	212	147	495	203	250	350	200	280	32	18	80	35	10X4.5	95	55	15X5	90
155	50	504	302	382	252	155	541	235	275	390	220	320	35	21	85	40	10X4.5	110	60	15X5	110
175		545	325	402	262	175	594	260	310	430	250	350	40	21	85	45	12X4.5	110	65	18X6	150
200	60	587	350	467	305	200	677	290	360	480	290	390	40	24	95	50	15X5	125	70	20X7	215
250		705	420	552	360	250	824	350	460	560	380	480	45	28	110	60	15X7	155	90	24X8	360

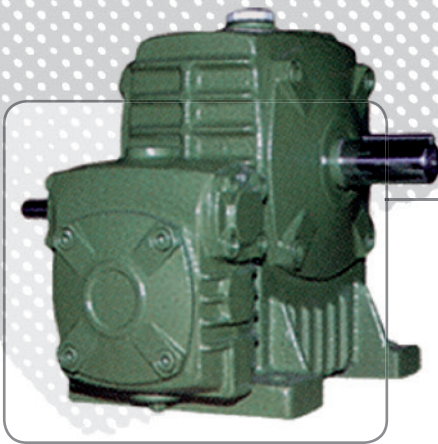
Series KVA

Series KVB

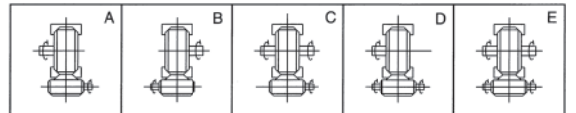
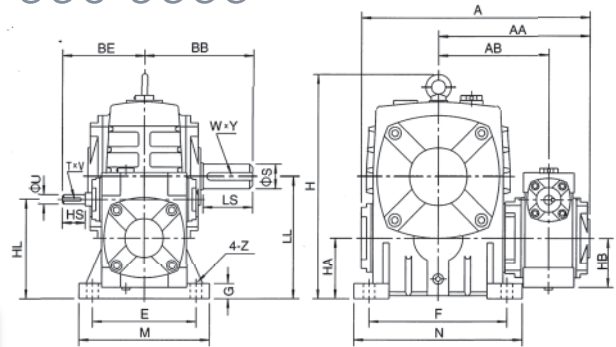


size	ratio	A	AB	BB	BC	CC	M	N	E	E ₁	E ₂	G	Z	input shaft			output shaft			weight(kg)
														HS	U	TXV	LS	S	WXY	
40	10	143	87	74	45	40	94	184	70	74	86	10	10	25	12	4X2.5	28	14	5X3	5
50		175	107	97	50	50	116	220	90	93	102	15	12	30	12	4X2.5	40	17	5X3	6
60		198	122	112	55	60	126	260	100	105	120	20	12	40	15	5X3	50	22	7X4	10
70		231	140	131	65	70	156	295	120	120	135	20	15	40	18	5X3	60	28	7X4	15
80		261	160	142	70	80	175	320	140	130	150	20	15	50	22	7X4	65	32	10X4.5	20
100		322	190	169	90	100	222	375	190	155	180	26	15	50	25	7X4	75	38	10X4.5	35
120		381	229	190	100	120	266	450	220	185	215	30	18	65	30	7X4	85	45	12X5.5	50
135		433	260	210	110	135	306	495	260	210	235	30	18	75	35	10X4.5	95	55	15X5	75
147		489	264	212	113	147	310	556	250	254	254	32	18	80	35	10X4.5	95	55	15X5	90
155		504	302	252	140	155	350	580	290	245	295	35	21	85	40	10X4.5	110	60	15X5	115
175	60	545	325	262	150	175	394	640	320	267	323	40	21	85	45	12X4.5	110	65	18X6	140
200		587	350	305	175	200	440	710	370	290	360	40	24	95	50	15X5	125	70	20X7	200
250		705	420	360	200	250	510	860	440	350	440	45	28	110	60	15X5	155	90	24X8	340

โทร : 02 550 9555



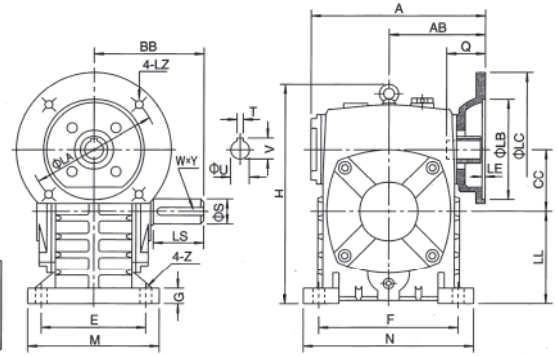
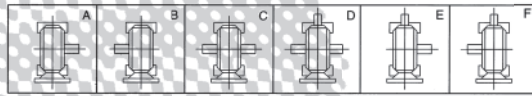
Series KBW



size	ratio	A	AA	AB	BB	BE	HL	LL	H	HA	HB	M	N	E	F	G	Z	input shaft			output shaft			weight(kg)
																		HS	U	TXV	LS	S	WXY	
40-70	200	262	171	126	131	89	110	140	236	70	50	150	190	115	150	20	15	25	12	4X2.5	60	28	8X4	20
50-80		297	197	144	142	107	130	160	268	80	65	170	220	135	180	20	15	30	12	4X2.5	65	32	10X5	27
60-100		363	231	175	169	122	160	200	336	100	75	190	270	155	220	25	15	40	15	5X3	75	38	10X5	44
70-120		408	256	193	190	140	190	240	430	120	90	230	320	180	260	30	18	40	18	6X3.5	85	45	14X5.5	73
80-135		471	298	226	210	160	215	270	480	135	105	250	350	200	290	30	18	50	22	6X3.5	95	55	16X6	101
80-147		476	301	229	212	160	203	270	501	123	105	250	350	200	280	32	18	50	22	6X3.5	95	55	16X6	112
100-155		555	354	269	252	190	235	290	531	135	130	275	390	220	320	35	21	50	25	8X4	110	60	18X7	144
120-175		598	379	287	262	229	280	335	600	160	155	310	430	250	350	40	21	65	30	8X4	110	65	18X7	201
135-200		662	425	318	305	260	310	375	666	175	185	360	480	290	390	40	24	75	35	10X5	125	70	20X7.5	293
155-250		795	510	380	360	302	355	450	800	200	203	460	560	380	480	45	28	85	40	12X5	155	90	25X9	462



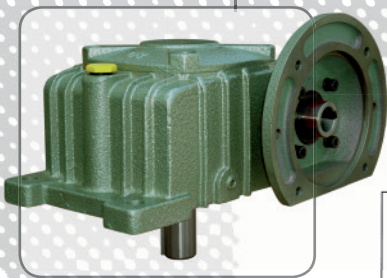
Series KAE



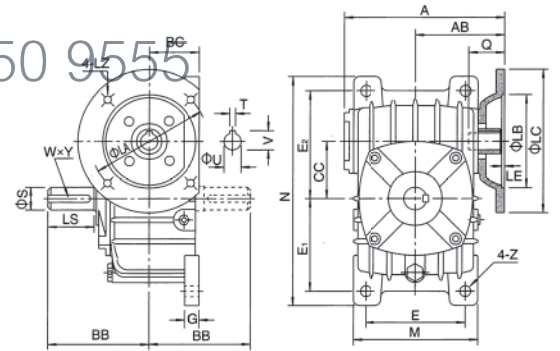
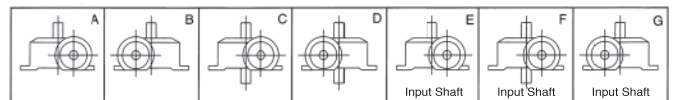
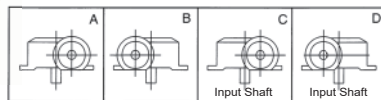
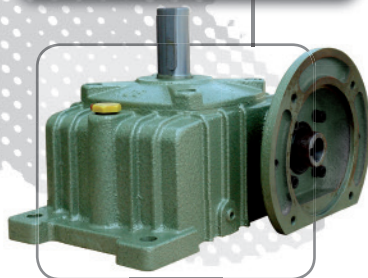
size	input(kW)	ratio	A	AB	BB	CC	H	LL	M	N	E	F	G	Z	flange					input hole			output shaft			weight (kg)
															LA	LB	LC	LE	LZ	Q	U	TXV	LS	S	WXY	
50	0.18	10	151	83	97	50	180	80	120	140	95	110	15	12	115	95	140	4	M8	31	11	4X12.6	40	17	5X3	8
60	0.37		167	91	112	60	207	90	130	150	105	120	20	12	130	110	160	4	M8	33	14	5X16.3	50	22	7X4	11
70	0.37	15	200	109	131	70	238	105	150	190	115	150	20	15	130	110	160	4	M8	40	14	5X16.3	60	28	7X4	17
	0.75		202	111																						
80	0.75	20	225	125	142	80	273	120	170	220	135	180	20	15	165	130	200	4.5	M10	48	19	6X21.8	65	32	10X4.5	22
	1.5																									
100	1.5	30	280	148	169	100	334	150	190	270	155	220	25	15	165	130	200	4.5	M10	52	24	8X27.3	75	38	10X4.5	38
	2.2																									
120	3.0	40	375	202	210	135	482	215	250	350	200	290	30	18	215	180	250	5	M12	63	28	8X31.3	95	55	15X5	85
	4.0																									
147	3.0	50	425	224	252	155	541	235	275	390	220	320	35	21	215	180	250	5	M12	63	28	8X31.3	110	60	15X5	118
	4.0																									
155	5.5	60	481	262	262	175	600	280	340	430	250	350	40	21	265	230	300	5	M12	83	38	10X41.3	110	65	18X6	165
	7.5																									
200	7.5	30	516	258	305	200	677	290	360	480	290	390	40	24	265	230	300	5	M12	83	38	10X41.3	125	70	20X7	236
	11.0																									
250	11.0	60	615	330	360	250	840	350	460	560	380	480	45	28	300	250	350	6	M16	114	42	12X45.3	155	90	24X8	396
	15.0																									

CT ELECTRIC SUPPLY CO., LTD.

Series KVE-B



Series KVE-A



size	input(kW)	ratio	A	AB	BB	BC	CC	M	N	E	E ₁	E ₂	G	Z	flange					input hole			output shaft			weight (kg)
															LA	LB	LC	LE	LZ	Q	U	TXV	LS	S	WXY	
50	0.18	10	151	83	97	50	50	116	220	90	93	102	15	12	115	95	140	4	M8	31	11	4X12.8	40	17	5X3	8
60	0.37		167	91	112	55	60	126	260	100	105	120	20	12	130	110	160	4	M8	33	14	5X16.3	50	22	6X3.5	11
70	0.37	15	200	109	131	65	70	156	295	120	120	135	20	15	130	110	160	4	M8	40	14	5X16.3	60	28	8X4	17
	0.75		202	111																						
80	0.75	20	225	125	142	70	80	175	320	140	130	150	20	15	165	130	200	4.5	M10	48	19	6X21.8	65	32	10X5	22
	1.5																									
100	1.5	30	280	148	169	90	100	224	375	190	155	180	26	15	165	130	200	4.5	M10	52	24	8X27.3	75	38	10X5	38
	2.2																									
120	3.0	40	375	202	210	110	135	306	495	260	210	235	30	18	215	180	250	5	M12	63	28	8X31.3	95	55	16X6	80
	4.0																									
135	3.0	50	425	224	252	140	155	350	590	290	245	295	35	21	215	180	250	5	M12	63	28	8X31.3	110	60	18X7	122
	4.0																									
155	5.5	60	481	262	262	150	175	394	640	320	267	323	40	21	265	230	300	5	M12	83	38	10X41.3	110	65	18X7	154
	7.5																									
200	7.5	30	516	258	305	175	200	440	710	370	290	360	40	24	265	230	300	5	M12	83	38	10X41.3	125	70	20X7.5	220
	11.0																									
250	11.0	60	615	330	360	200	250	510	860	440	350	440	45	28	300	250	350	6	M16	114	42	12X45.3	155	90	25X9	374
	15.0																									

Character Table of Single Reduction with Input Shaft Style

INPUT RATINGS		1800 RPM				1500 RPM				1200 RPM				900 RPM				600 RPM				300 RPM			
SIZE	RATIO	HP1	HP2	O.T.	O.H.L.	HP1	HP2	O.T.	O.H.L.	HP1	HP2	O.T.	O.H.L.	HP1	HP2	O.T.	O.H.L.	HP1	HP2	O.T.	O.H.L.	HP1	HP2	O.T.	O.H.L.
40	1/10	0.83	0.65	2.60	70	0.77	0.60	2.80	70	0.67	0.51	3.10	70	0.56	0.42	3.40	70	0.43	0.32	3.80	70	0.23	0.16	3.80	70
	1/15	0.70	0.54	3.00	70	0.62	0.48	3.10	70	0.35	0.27	2.40	70	0.28	0.22	2.60	70	0.24	0.19	3.00	70	0.13	0.10	3.30	70
	1/20	0.38	0.27	2.10	70	0.34	0.24	2.30	70	0.30	0.21	2.50	70	0.26	0.17	2.80	70	0.20	0.13	3.10	70	0.13	0.08	3.70	70
	1/30	0.43	0.28	3.30	70	0.40	0.25	3.50	70	0.34	0.21	3.80	70	0.27	0.16	3.80	70	0.20	0.11	3.80	70	0.10	0.05	3.80	70
	1/40	0.26	0.15	2.50	70	0.24	0.14	2.60	70	0.21	0.12	2.80	70	0.18	0.10	3.10	70	0.14	0.07	3.40	70	0.09	0.04	3.80	70
	1/50	0.25	0.14	2.80	70	0.23	0.12	3.00	70	0.20	0.11	3.20	70	0.17	0.09	3.50	70	0.13	0.06	3.80	70	0.07	0.03	3.80	70
50	1/60	0.20	0.10	2.40	70	0.19	0.09	2.60	70	0.16	0.08	2.70	70	0.14	0.06	5.00	70	0.11	0.05	3.20	70	0.07	0.03	3.80	70
	1/10	1.44	1.15	4.59	100	1.31	1.03	4.94	107	1.16	0.90	5.40	115	0.89	0.68	5.43	120	0.60	0.45	5.43	140	0.31	0.23	5.43	200
	1/15	1.07	0.81	4.89	115	0.97	0.73	5.22	120	0.82	0.60	5.43	130	0.63	0.45	5.43	140	0.43	0.30	5.43	160	0.22	0.15	5.43	200
	1/20	0.65	0.48	3.85	130	0.58	0.43	4.13	140	0.51	0.37	4.48	155	0.43	0.31	4.94	170	0.32	0.22	5.43	200	0.17	0.12	5.43	200
	1/30	0.68	0.45	5.43	150	0.58	0.37	5.43	170	0.48	0.30	5.43	180	0.37	0.22	5.43	200	0.26	0.15	5.43	200	0.14	0.07	5.43	200
	1/40	0.44	0.28	4.50	170	0.40	0.25	4.80	180	0.35	0.21	5.16	200	0.28	0.17	5.43	200	0.20	0.11	5.43	200	0.10	0.05	5.43	200
60	1/50	0.39	0.23	4.55	200	0.35	0.20	4.94	200	0.31	0.17	5.29	200	0.24	0.13	5.43	200	0.17	0.09	5.43	200	0.09	0.04	5.43	200
	1/60	0.31	0.18	4.35	200	0.28	0.16	4.60	200	0.24	0.13	4.87	200	0.21	0.11	5.34	200	0.15	0.07	5.43	200	0.08	0.03	5.43	200
	1/10	2.32	1.87	7.44	98	2.08	1.66	7.95	104	1.88	1.47	8.80	110	1.57	1.21	9.68	121	1.23	0.93	11.1	140	0.66	0.48	11.6	200
	1/15	1.72	1.32	7.91	116	1.55	1.18	8.46	123	1.36	1.01	9.07	133	1.17	0.85	10.2	145	0.90	0.64	11.5	167	0.48	0.32	11.6	200
	1/20	1.21	0.89	7.15	138	1.10	0.80	7.66	146	0.98	0.69	8.31	157	0.83	0.57	9.16	172	0.65	0.43	10.4	200	0.38	0.24	11.6	200
	1/30	1.14	0.78	9.31	151	1.05	0.70	10.0	159	0.92	0.59	10.6	172	0.78	0.48	11.6	189	0.54	0.32	11.6	200	0.29	0.16	11.6	200
70	1/40	0.82	0.52	8.27	178	0.75	0.46	8.83	189	0.67	0.39	9.49	200	0.58	0.32	10.4	200	0.45	0.24	11.6	200	0.25	0.12	11.6	200
	1/50	0.77	0.49	9.70	200	0.70	0.43	10.2	200	0.62	0.37	11.0	200	0.40	0.23	9.22	200	0.31	0.17	10.3	200	0.19	0.09	11.6	200
	1/60	0.64	0.38	9.20	200	0.58	0.34	9.70	200	0.51	0.29	10.4	200	0.43	0.24	11.3	200	0.25	0.13	9.52	200	0.14	0.07	11.2	200
	1/10	3.48	2.82	11.2	128	3.11	2.50	11.9	136	2.77	2.20	13.1	145	2.23	1.81	14.4	159	1.85	1.41	16.9	180	1.20	0.88	21.1	228
	1/15	2.53	1.96	11.7	153	2.29	1.76	12.6	161	2.02	1.52	13.6	174	1.73	1.28	15.2	190	1.34	0.96	17.3	218	0.87	0.59	21.4	277
	1/20	1.93	1.47	11.7	178	1.75	1.31	12.5	188	1.55	1.14	13.6	202	1.31	0.94	15.0	222	1.02	0.71	17.1	255	0.65	0.43	20.6	300
80	1/30	1.69	1.16	13.8	198	1.55	1.05	15.0	208	1.36	0.89	16.1	225	1.18	0.74	17.7	247	0.92	0.56	20.1	284	0.59	0.33	23.8	300
	1/40	1.24	0.82	13.1	233	1.13	0.73	14.0	247	1.01	0.63	15.0	266	0.86	0.51	16.5	293	0.67	0.39	18.6	300	0.43	0.23	21.9	300
	1/50	1.12	0.72	14.3	266	1.03	0.64	15.2	282	0.91	0.55	16.3	300	0.77	0.45	17.8	300	0.60	0.33	19.7	300	0.39	0.19	23.2	300
	1/60	0.94	0.58	13.9	289	0.86	0.51	14.6	300	0.76	0.43	15.6	300	0.65	0.36	17.0	300	0.50	0.26	18.6	300	0.32	0.15	22.0	300
	1/10	4.93	4.01	15.9	180	4.43	3.58	17.0	191	3.89	3.12	18.6	204	3.30	2.59	20.6	224	2.63	2.02	24.1	254	1.70	1.26	30.1	321
	1/15	3.57	2.79	16.7	215	3.21	2.49	17.8	228	2.83	2.17	19.4	244	2.44	1.81	21.7	267	1.90	1.38	24.7	306	1.24	0.85	30.7	388
100	1/20	2.53	1.90	15.1	253	2.30	1.71	16.3	267	2.04	1.49	17.8	287	1.73	1.22	19.5	316	1.37	0.93	22.4	362	0.86	0.57	27.2	400
	1/30	2.38	1.66	19.8	277	2.15	1.47	21.1	294	1.90	1.28	22.9	316	1.65	1.06	25.3	345	1.31	0.80	28.7	368	0.84	0.47	34.0	400
	1/40	1.70	1.10	17.5	326	1.54	0.98	18.7	347	1.38	0.85	20.4	372	1.19	0.69	22.2	400	0.94	0.52	25.0	400	0.62	0.31	29.8	400
	1/50	1.57	1.01	20.1	364	1.43	0.90	21.6	385	1.28	0.77	23.1	400	1.09	0.63	25.1	400	0.85	0.47	28.0	400	0.55	0.28	33.0	400
	1/60	1.29	0.79	18.9	400	1.18	0.71	20.4	400	1.05	0.60	21.6	400	0.91	0.50	23.7	400	0.70	0.36	26.0	400	0.46	0.21	30.8	400
	1/10	8.73	7.18	28.5	167	7.93	6.46	30.8	177	6.93	5.6	33.4	190	5.97	4.69	37.3	207	4.68	3.65	43.3	235	2.79	2.09	50.0	297
120	1/15	6.34	5.02	29.9	204	5.66	4.43	31.7	217	5.09	3.94	35.3	230	4.33	3.29	39.3	251	3.88	2.48	44.5	289	1.99	1.39	50.0	365
	1/20	5.02	3.93	31.2	239	4.57	3.54	33.8	252	4.03	3.09	36.9	269	3.40	2.33	40.3	297	2.87	1.99	46.2	240	1.52	1.04	50.0	435
	1/30	4.20	3.00	35.8	265	3.81	2.66	38.2	281	3.35	2.30	41.1	302	2.89	1.92	46.0	330	2.23	1.39	50.0	382	1.20	0.69	50.0	500
	1/40	3.17	2.20	35.1	316	2.86	1.96	37.4	336	2.54	1.71	40.9	359	2.03	1.28	46.0	397	1.71	1.04	50.0	458	0.92	0.52	50.0	500
	1/50	2.39	1.59	31.8	364	2.17	1.42	34.0	386	1.93	1.24	37.0	415	1.66	1.01	49.2	458	1.29	0.75	44.7	500	0.79	0.41	50.0	500
	1/60	1.96	1.27	30.4	400	1.79	1.14	32.7	424	1.59	0.97	34.9	458	1.37	0.79	38.1	500	1.05	0.58	42.0	500	0.68	0.34	49.8	500
135	1/10	13.8	11.4	45.7	177	12.6	10.4	49.6	184	11.0	9.02	53.8	198	9.38	7.55	60.1	214	7.46	5.86	69.9	241	4.64	3.51	84.0	305
	1/15	10.0	8.05	48.0	218	9.02	7.15	51.2	231	8.08	6.32	56.5	244	6.83	5.26	62.8	267	5.39	4.01	71.9	305	3.30	2.34	84.0	386
	1/20	7.16	5.54	44.0	270	6.49	4.97	47.4	285	5.72	4.30	51.3	306	4.85	3.58	57.0	335	3.87	2.74	65.4	383	2.53	1.69	80.7	488
	1/30	6.66	4.82	57.5	285	6.00	4.28	61.3	302	5.31	3.70	66.3	325	4.55	3.09	73.9	354	3.65	2.34	83.9	408	1.97	1.17	84.0	531
	1/40	4.68	3.19	50.7	357	4.19	2.81	53.6	380	3.77	2.45	58.5	407	3.24	2.03	64.8	446	2.62	1.53	73.3	514	1.64	0.88	84.0	665
	1/50	3.93	2.74	54.5	404	3.54	2.43	58.0	429	3.15	2.12	63.4	459	2.69	1.72	68.7	508	2.09	1.28	76.5	588	1.24	0.70	84.0	700
155	1/60	3.14	2.04	48.9	453	2.84	1.81	51.9	481	2.52	1.56	56.2	518	2.17	1.28	61.3	571	1.70	0.94	67.5	662	1.12	0.56	81.1	700
	1/10	19.8	16.5	66.0	304	18.0	15.0	71.7	319	15.8	13.0	77.7	342	13.3	10.9	86.8	372	10.6	8.46	101	421	6.87	5.30	126	533
	1/15	14.7	11.9	71.4	362	13.1	10.6	76.1	384	11.8	9.38	84.0	407	9.95	7.82	93.3	445	7.83	5.96	106	510	5.11	3.73	133	644
	1/20	11.3	9.11	72.5	426	10.3	8.19	78.2	449	8.97	7.03	83.9	484	7.69	5.92	94.3	528	6.05	4.51	107	605	3.88	2.76	131	772
	1/30	9.68	7.21	86.0	468	8.71	6.40	91.7	496	7.70	5.53	99.1	533	6.58	4.62	110	583	5.24	3.50	125	670	3.13	1.95	140	866



KIMPO

WORM GEAR REDUCER

			7X4	10
5X3	60	28	7X4	15
7X4	65	32	10X4.5	20
			10X4.5	35
10X4.5	95	55	15X5	75
10X4.5	95	55	15X5	90
10X4.5	110	60	15X5	115
15X5	125	70	20X7	200

โทร : 02 550 9555

