



ViSoft® Premium

News in Update 2011-1

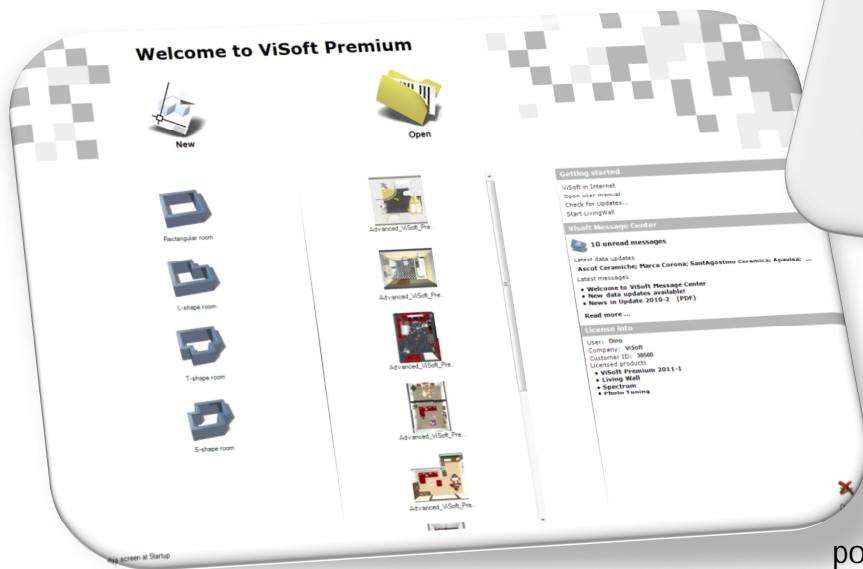
1 NEW FUNCTIONS



1.1 THE USER INTERFACE

High quality visualisation software for professional bathroom designers and planners attaches high demands to the aesthetics - in particular on our behalf.

Here's the proof: ViSoft Premium in its version 2011-1 has undergone a perfect facelift and presents all the usual functions in a new, very modern style.



The icons and buttons are laid out on the software three dimensionally, lovingly designed and unique to your picture language. This makes working with ViSoft Premium even nicer and easier. All functions remain



Still

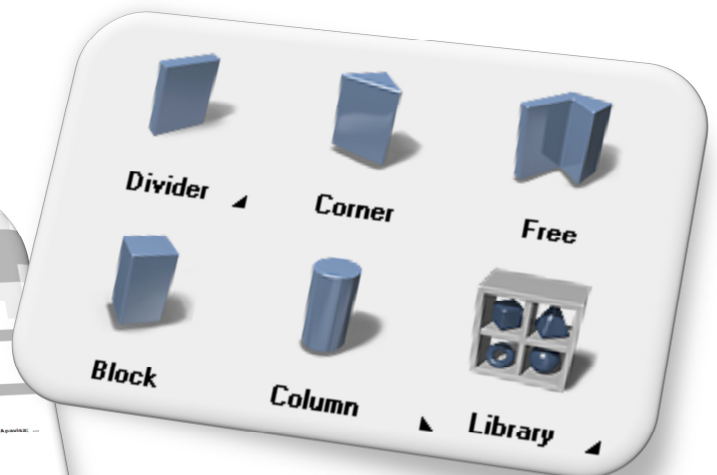


Transition



Action

where they were previously, the logistics of the user interface is identical to the previous versions, and all programme levels are meticulous and have been revised in detail. So designing and planning becomes a pleasure!

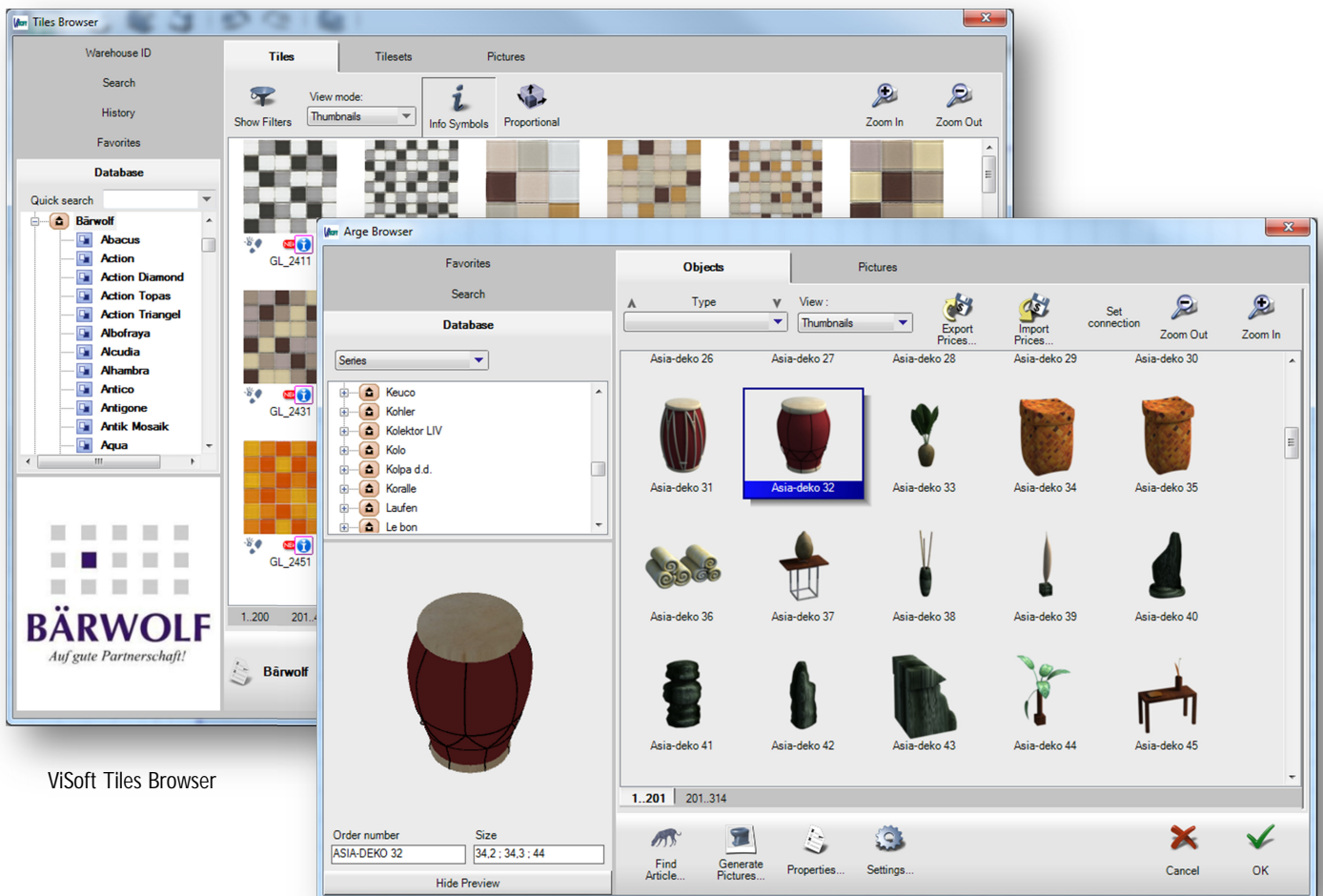
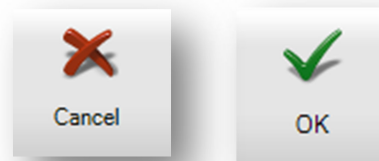


The systematics is easy:

Surface icons are in the still position. The status is still or inactive. Move the mouse over the icons and they come out of their shadows and into life. In short: they are in transition to another dimension. Status here: over. If the function is clicked on and activated, the icon appears to be pushed away to the back. The button is pushed, the status is action.



Employing intuitive software is good fun and gets the job done very easily. You just concentrate on the content and the wishes of your customer's, the functions - whether already known to you or new - are opened up as though from yourself. Just give it a go!



ViSoft Tiles Browser

ViSoft Sanitary Browser

All valuable functions are clearly laid out and well structured on the ViSoft programme interface. They are just waiting to be activated by the cursor.

This has its advantages: not only does the appliance function more quickly, but new employees and colleagues are also able to orientate themselves to it without any problems or too much effort. The hovering function keys are to thank for that.

ViSoft has always placed value on superior input concepts. Clarity and ease-of-use in operation are right at the top of the processed list of requirements and can be seen, for example, in functions such as fast tile (back and forth application), which is exclusively available in ViSoft Premium.

The whole programme interface has been elaborately redesigned and carefully optimised. See for yourself: menu panels and browser windows to make up a

complete, closed unit which takes care of the overview and comfort. Pleasant side effect: the new design exudes elegance, peacefulness and professionalism.

1.2 SORTING IN ARGE SANITARY BROWSER

The agony of choice? Not anymore! The current version 2011-1 makes choosing objects in Arge Browser easier, more clearly presented and more proficient. Moreover, the objects can be sorted according to type. Very practical.

It works like this: set the View to Object Types and wait the subsequent sorting: it's worth it! All objects and all types of this typology come to the front of the screen. This makes choosing models handy and direct.

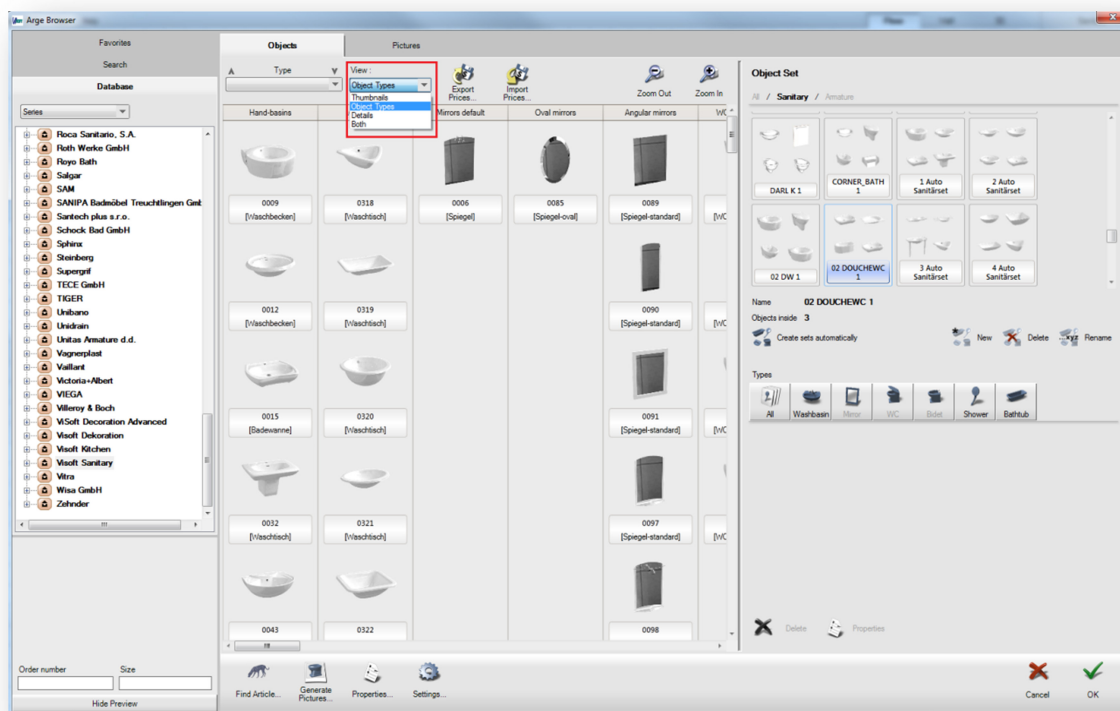
All objects are now presented column by column in accordance with their type.

Simply scroll downwards to compare the contents of the series.

The Premium benefit:

The most clearly laid out and complete selection of suitable objects - easy to peruse and present.

The browser window itself has a modern look. Together with the practical and appealing sorting function, there is also a clear and user friendly appearance.



ViSoft Sanitary Browser, Sorting of Object-Types

1.3 OBJECTS IN ALL VARIATIONS

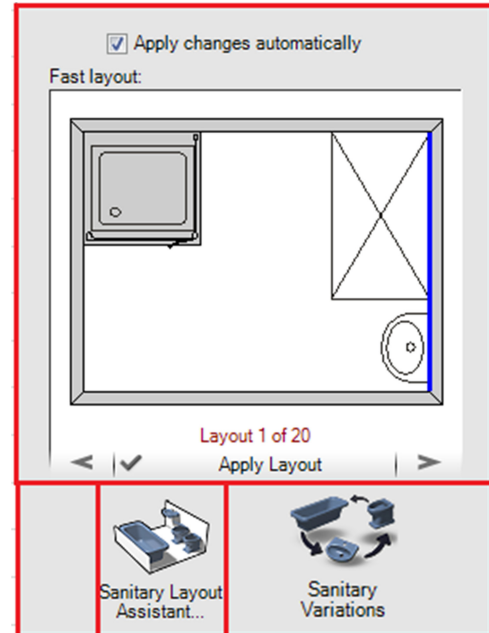
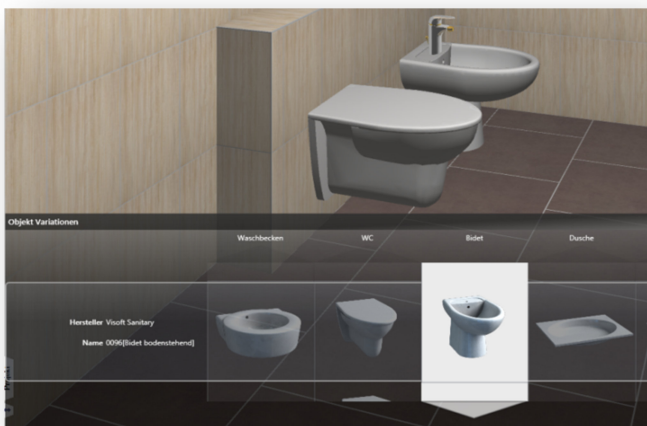
Here we offer you our professionalism with our customer advisory service:

sanitary variations is the name of the new function, which elegantly displays the object variations in Fast Layout, easy to alternate and in both real time and 3D. The customer instantly has the first picture of his new bathroom, you have planning competency and a whole range of different layout proposals up your sleeve.

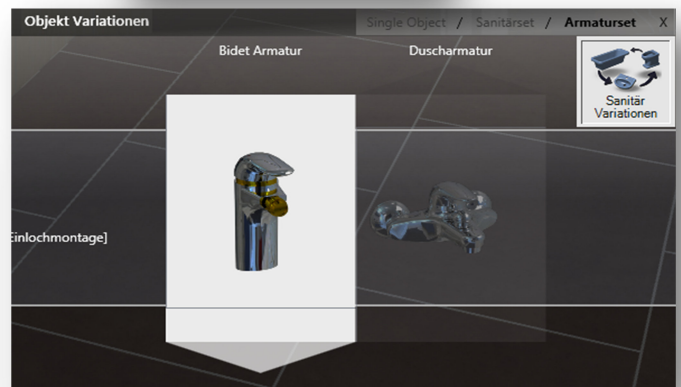
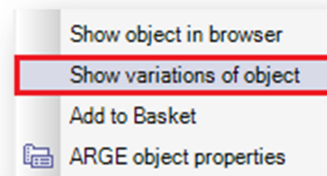
It works like this: you create an automatic layout concept in the functional area **Sanitary** > **Fast Layout**. Select the new function **Sanitary Variations**, and a half transparent panel appears directly over the 3D presentation.

For the presentation of various variations, now select objects in 3D with the left mouse button. With this you are able to change via the **big arrow keys** the objects in a series.

There is also an **alternative** approach, because the function is also available **without layout** for individual parts in the context menu by clicking the right mouse button. In this way the objects are able to be replaced and moved using the mouse wheel.



The control Object Variations Panel fades in and out of the transparent menu in 3D. The **object selection** is available for individual objects by clicking the **right mouse button**.



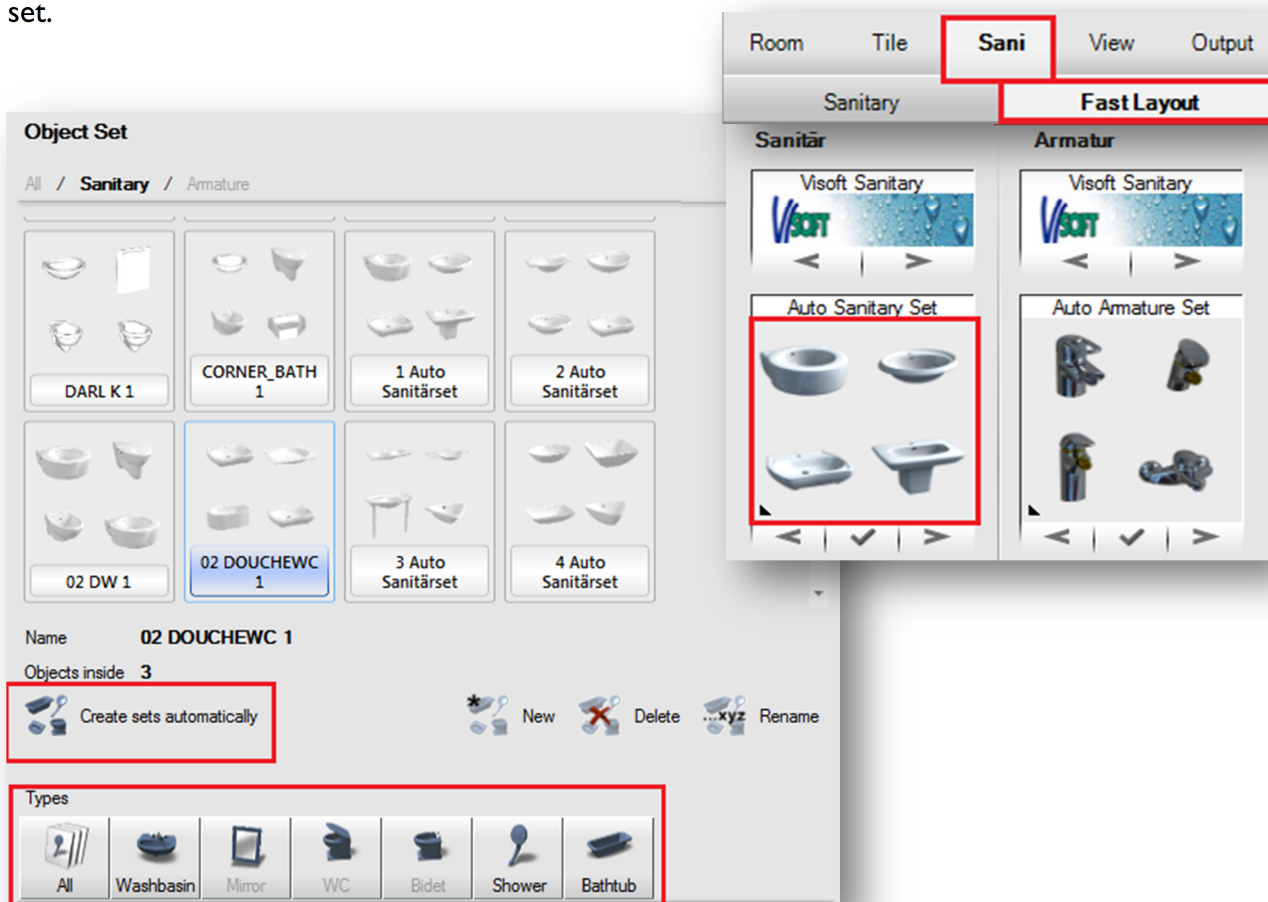
ViSoft object variations: you can exchange the ceramics, fittings and decorations at the push of a button or using the mouse wheel. In real time and in 3D!

1.4 AUTOCREATION OF SANITARY SETS

Yet another attraction in the functional area Fast Layout: the Arge Browser now makes the automatic creation of object sets possible. And it's really easy:

Just one click on the button **Create sets automatically** leads to the calculation, which combines previously selected objects into one set.

Create your **object set** and present your customer with options in the final stages of project planning. An example: you can switch cycles problem-free within the finished planning of the armature of a complete object set. The customer can immediately see which parts go together and which do not, which function well with these sanitary objects and which do not.



The object set generator: You can find the function in ARGE Sanitary browser on the right side of the browser window

You decide which objects, which manufacturers and which series it is. The sets are continuously reconfigured - an impressive show.

The selection of this is available in the functional area Fast Layout.

The Premium benefit:

This practical and convincing functionality is available in the Arge Browser in the functional area Sanitary > Fast Layout.

With this you can create both sanitary object sets as well as armature sets. First click on the chosen sanitary or armature set with the right mouse button. A new menu

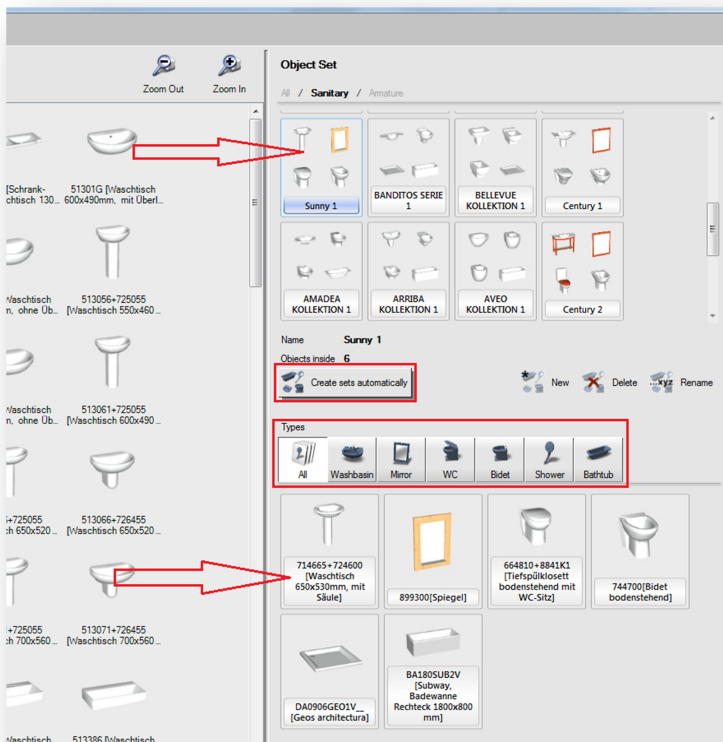
will open on the right hand side of the Arge Browser, and then do as follows:

One click on **Create sets automatically** gives you help in creating the set and clicking on **New** gives the set a new name.

This practical and convincing functionality you find in the Arge Browser which could be opened in the functional area Sanitary > Fast Layout.

In the same way you can also exchange objects of the same type.

Or you can limit the creation of the set using the tab page **All**, adding or deleting the objects.



The highlight:

Changes can be made quickly and flexibly: simply drag and drop objects from the overview into one of the sets with the left mouse button.

An additional service: in the bottom section of the window Object set can be sorted. View it and delete unwanted objects from the set as required with the same method - just drag and drop them out using the left mouse button.

The section **Types** show all similar objects from a series of the active set in the bottom right corner of the window. So you maintain a perfect overview – despite the large variety.

And even more conveniently: you can select objects by clicking the right mouse button and then add them, using commands, to the context menu of the chosen set. Finished!

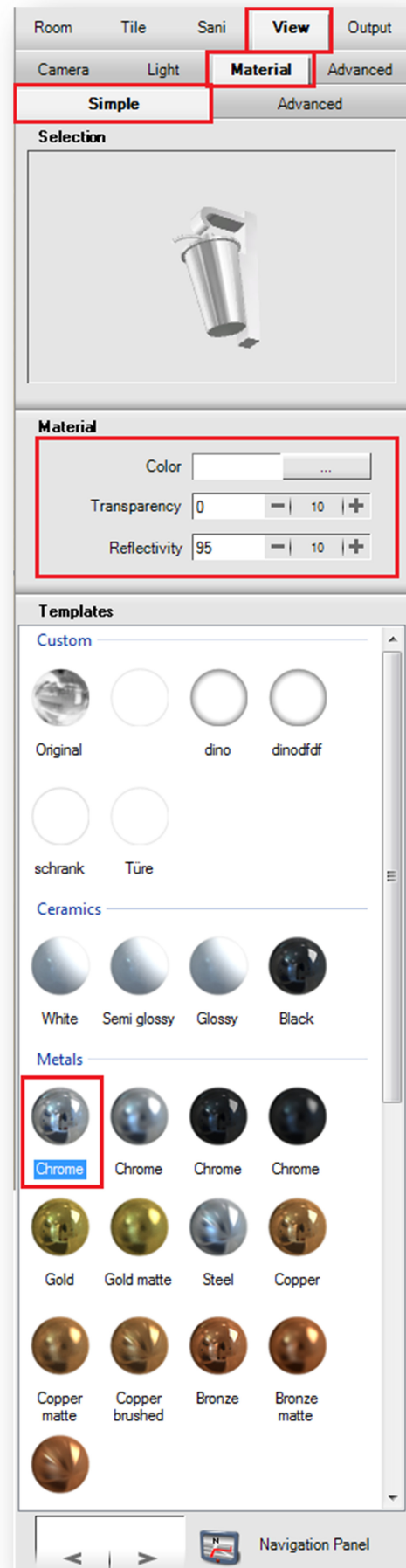
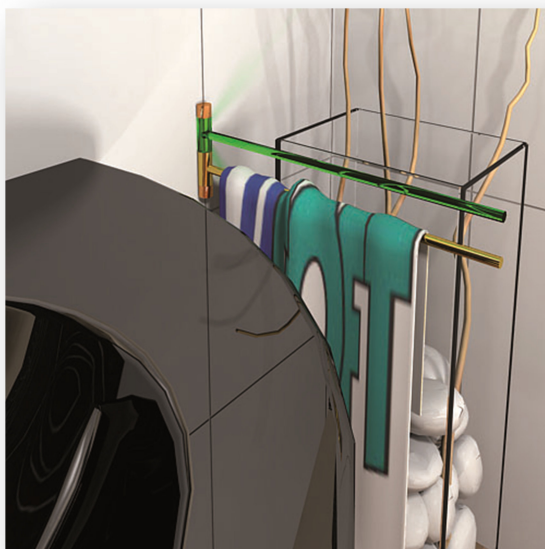
1.5 MATERIAL EDITOR

Photo Tuning users already know to highly value this from version 2010-1: the fascinating and convincing opportunity for the perfect photo realistic **contact surface**. The reason to be happy about this is definitely because, as of now, various functions for **material adaptation** are available in the functional area **View > Material > Simple**.

The Premium benefit:

Users of both products benefit twice as much: changes to items, like colour changes, transparency and reflection for example have an immediate effect in 3D View as well as on the Photo Tuning presentation.

Of additional value for Photo Tuning users: additional functions in the advanced material editor enables all conceivable contact surfaces. Using the practical search function you can preselect close to reality, correctly detailed, physically correct parameters. This simple operation saves time and unburdens the planner.



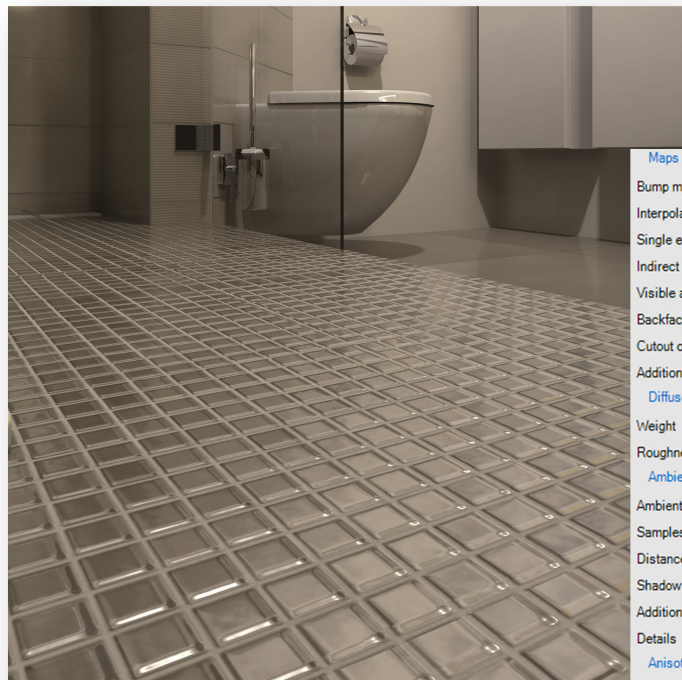
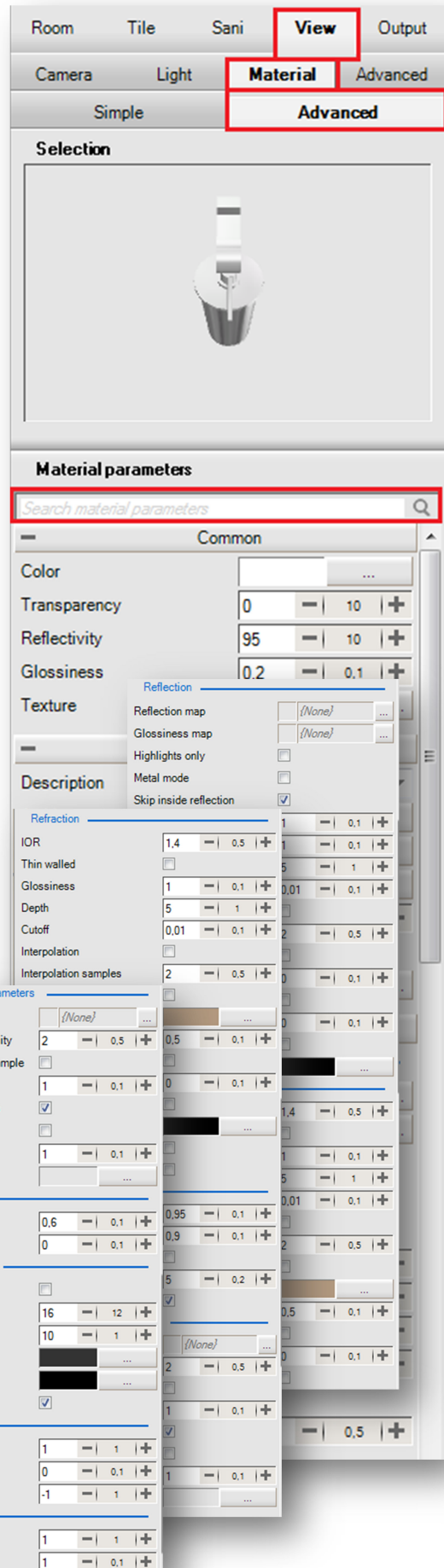
1.6 PHOTO TUNING: ADVANCED MATERIAL EDITOR

Material in abundance: with the advanced material editor, advanced photo tuning users have more than 70 parameters to choose from, which are clearly laid out in groups in a scroll-down list.

The group titles are coloured blue to aid better orientation. The design takes place in a logistical sequence, beginning with the settings for mirroring and lighting, which in the first instance relates to glass quality and liquidity and the details regarding to designing the structure and its shading.

ViSoft tip: plan a test project with the tiles from series Highlands of Jasba manufacturer and render it.

You will be amazed!!

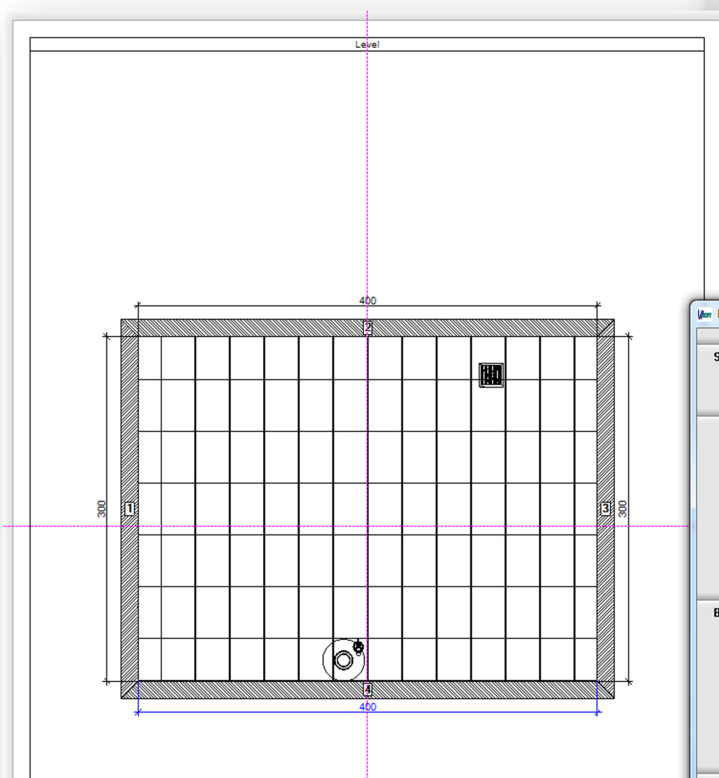
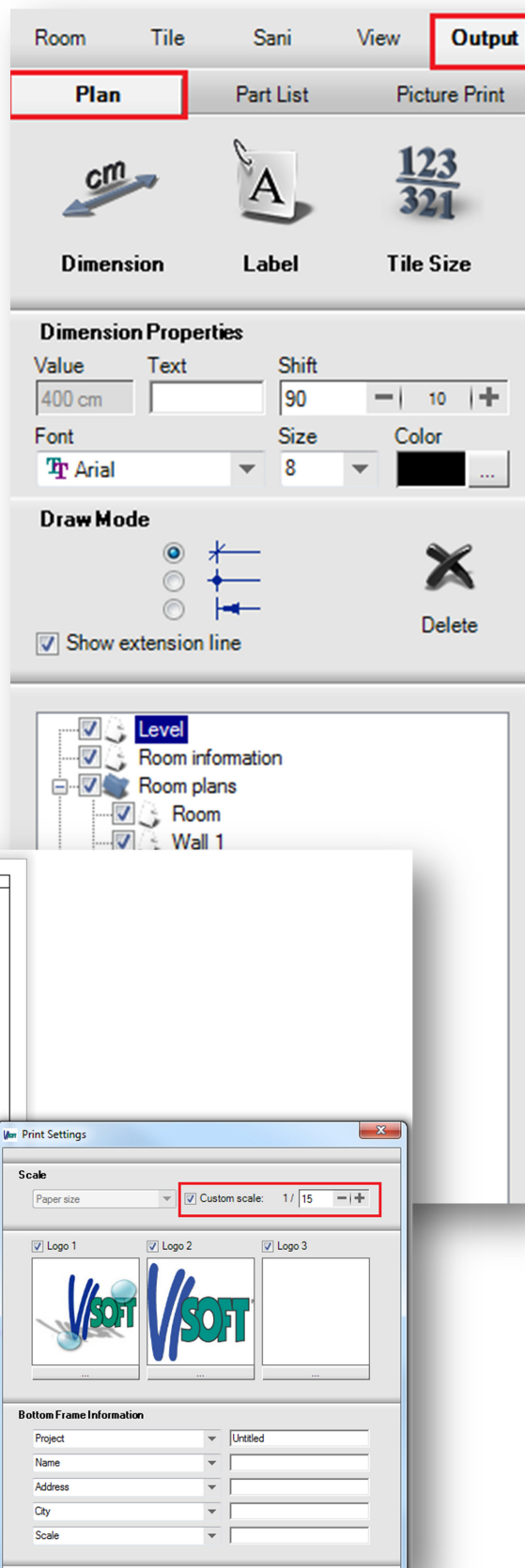


1.7 MULTIPAGE PRINTOUT OF ROOM PLANS ACCORDING TO SET SCALE

This is a plus for all ViSoft Premium users, who always have to print out big plans because now the new integrated function allows printing to scale as well as large formats. All that you still have to do is trim the individual A4 pages, stick them together properly and you're done!

It's as easy as A-B-C: as soon as you select a scale **Print Settings** dialog box, the output sheet will be split into several pages in the functional area **Output > Plan**. Borders are included.

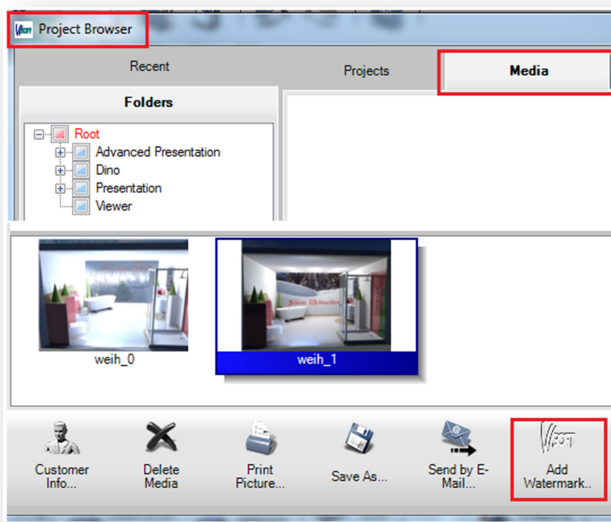
Are you unsure? Then you can quickly control the selected section in the print preview with the **magenta dashed lines**. Then you'll know whether the scale of the print really works. Sure is sure!



1.8 POSSIBILITY TO ADD WATER MARKS ON SAVED PICTURES IN MEDIA BROWSER

It's really nothing new: there have been **water marks** since version 2010-2 in the **Save Picture** dialog box. Really.

And yet there is a new function. From now, each image in the Media Browser can be overlaid with a water mark. It's quick and protects you from plagiarism and malevolent competition: you can change this in **Project Browser > Media** in the overview of your created images.



Press button **Add Watermark** to open dialog box for configuring watermark image properties. You can make each image individual.

The Premium benefit: for your security, ViSoft Premium automatically creates an extra copy of the original with the ending **_wmON**. Thus your original data is safe.

1.9 NAVIGATION IN 3D VIEW AROUND OBJECTS

Would you like to view one or several objects more closely? Would you just like to turn the item or the arrangement? Capture the situation as a whole?

Then you'll like this solution:

Click and **hold** the **right mouse button** on the object that you'd like to examine more clearly. Now when you **move** the mouse, you'll be able to see the object in **circular view** from all sides.

Do you want to test it?

Decide on a sanitary object in your project that you want to view more closely.

Now hold the **right mouse button** down over the object and **move** the mouse.

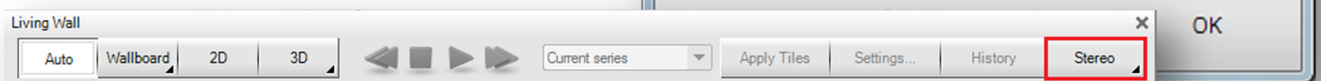
Well? Do you like the result?

Warning! Please don't forget to finish the planning now.



1.10 LIVING WALL: STEREO MODE

Everyone is talking about 3D. ViSoft Premium has been using it for a while and is fascinated by the realistic photo information in the planning data - a view that is persuasive and the technological wide view of the ViSoft development department is spectacularly documented.



Using this is, typically of ViSoft, easy and optically absolutely persuasive: with the Living Wall module, you can create stereoscopic images for the display on 3D ready screens and TV equipment in high quality and resolution with convincing effects for your customers. With this you are a technology leader.

The typical presentation options: Choose between right-left (images that are next to one another), or above-below (images that are on top of one another). Put on your 3D glasses and be amazed.



1.11 VISOFT SERVER

Now it is perfect: ViSoft Network Server has arrived! And with it lots of technical support, which can be time consuming, cleans up routine work in a lasting way and makes life simpler and more effective without too much effort.

The server solution is a permanent service which saves you lots of maintenance work, which are split into branches usually means working constantly to stay in the same position and makes updates by DVD unnecessary. The user experiences the value very quickly, for example by means of the automatically split records. Upload just once for all systems - and that's you done.

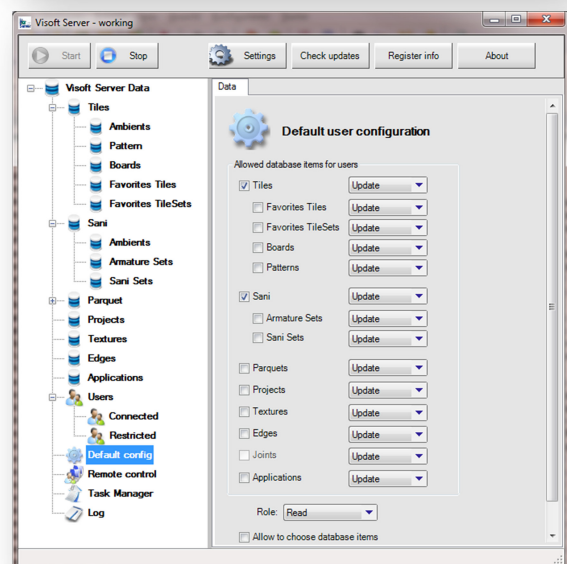
In short: the ViSoft server makes all available ViSoft updates ready for the whole network (intranet) and allows the exchange of all project related data within a branch. It defines and limits material (tiles and sanitary objects) which are useful for planning and coordinates prices and special internal specifications for all.

The facts:

The software is available as an add-on module and requires an activation code to be set-up. You can purchase the server application either as an individual place licence or as an upgrade for the main licence.

Interested?

Contact your dealer or contact ViSoft GmbH Germany direct for more information.



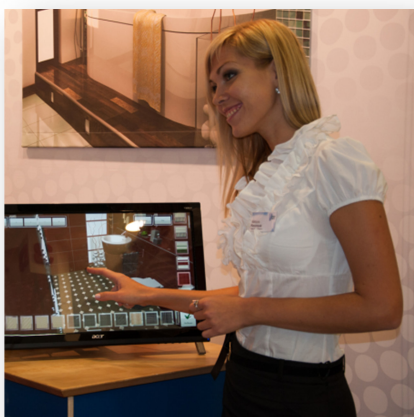
1.12 SMOOTHING THE SURFACES OF SANITARY OBJECTS

Do the illustrated sanitary objects have corners where they should actually be rounded? That's not a problem any longer! The button **Recalculate object normals** allows subsequent editing of sanitary objects that appear too angular. You can find this functional area **View > Material > Advanced**. Do you want to smooth objects? Just press the control once. All done!

1.13 VISOFT PAD: THE TOUCH SCREEN SOLUTION

Simply fascinating and fascinatingly simple: the ViSoft Pad is a **sensational touch screen solution** with an apps-character from the ViSoft Premium product range.

ViSoft Pad will convince you with its playfully easy operation: just tap the tile of your choice with your finger and drag it onto the floor or the wall. All done! It's all tiled and the customer can see if the tiles that he liked so much in the exhibition look as good in his bathroom as he had thought. Or perhaps it would look better with a border? Just tap, drag across and you've got a new view: alternative floor, different wall tiles.



In short: ViSoft Pad is a fascinating customer advisory instrument that shows different rooms with already finished wall and floor tiles (chosen by you). They can be used to show design options of a series, to be consistent with current exhibitions or be set up to show selling favourites - it's all really easy to do with ViSoft Premium.

ViSoft Pad can also be a stand-alone solution. Possible uses include: being used as a special customer advisor for colour and size options, for design proposals with other tiles or for

the virtual expansion of the area with direct links to your own IT.

As part of its service, ViSoft also puts together the corresponding tiles and design options as wall and floor panels in accordance with your wishes and specifications and takes care of the professional presentation in exhibitions and showrooms.

Warning! ViSoft Pad comes with a high risk of addiction! If you start to use it, you just won't want to stop. It's just simple fun to try out all options, actually all, just with the touch of your finger - it's intuitive and you don't need any prior knowledge. Your customers will be amazed - that much is sure!



Lay tiles more quickly and easily than ever before and in very high quality. It functions with all Windows 7 computers and it requires a touch screen monitor. That is all.

ViSoft

Art that fascinates.

1.14 PHOTO TUNING: PANORAMA

Includes all-round visibility: create 3D panoramas of your planned room in photo realistic quality.

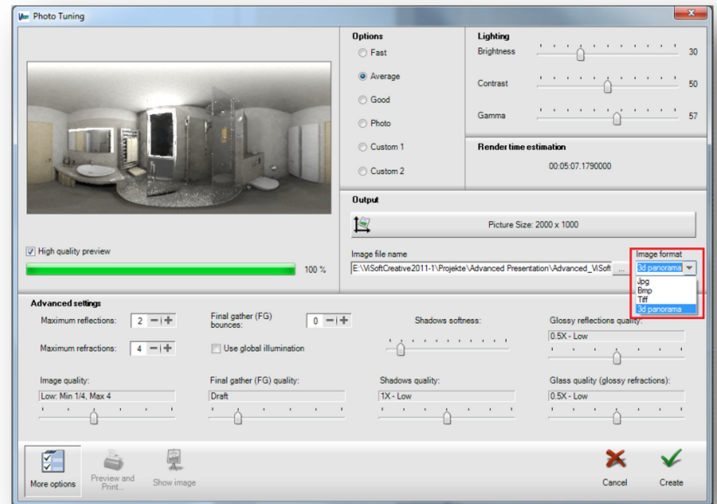
To do this, just select 3D panorama image format in the Photo Tuning dialog box and then you can calculate an image in photo quality.

The scale of the data should be 2:1.

Using the freely available panorama software FSP Viewer, you can download the image and send it to your customer by mail.

You will receive much enthusiasm for this. The data is much smaller than videos, deceptively real and allows a glance, in photo quality, into projects that are yet to begin.

Why don't you take a look at our example on <http://www.visoft.de/en>



Panorama View - made with ViSoft Photo Tuning

2 THESE FUNCTIONS ARE NOW EVEN MORE COMFORTABLE, EFFICIENT AND FASTER.

2.1 PERFORMANCE IMPROVEMENTS

Now let's quickly go back to the issue: the overall efficiency of the system demonstrates significantly better value. That means that your computer works much faster with this version. The reason for that: a large part of the development time for this version was spent editing the programme codes, in order to prevent potential losses and to convert these into faster computer speeds. This was successful!

The proof: in the basic settings for the [illumination of the project](#) you will also see a clear improvement in performance.

Anyone who noticed a lesser performance of their computers the last two updates of ViSoft Premium (version 2010-1 and version 2010-2) can now be happy with the numerous computer power reserves that are available with the new version.

The Premium benefit:

Are you a Photo Tuning user? Then let yourself be surprised at how much faster renderings of the quality photos are now finished.

2.2 VISUALISATION EFFECTS SETTINGS IN VIEW.ADVANCED

Does your computer require longer in spite of this? Even computers which are not brand new can perform better. The new trick: you can allow the presentation quality during the planning phase to be limited just to the bare minimum with the group of controls [Visualisation Effects](#). That gives your computer more room to play.

You can find this in [View > Advanced > Visualisation Effects](#).

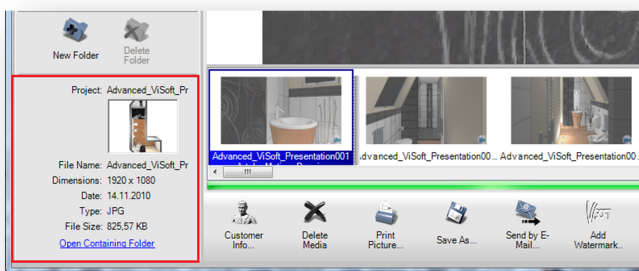
In principle there are two basic settings:

1. During the [planning phase power](#) you prioritise performance; this means that your computer should accelerate during planning, so the control must be deactivated.
2. At the end of planning you want to create perfect [task](#) images, so you simply turn the power back to [quality mode](#). Then print or display the high quality images from your project planning.

2.3 FILE DETAILS IN THE MEDIA BROWSER

You have already planned several projects and saved them onto your computer. You want to display various bits of them or use them as templates for other projects. To do this you're looking for a design from before...

This is now really easy: the Media Browser now only shows the important details of your creative works and these are clearly laid out. Image size, data size and the date they were created appear on the left of the preview window. Then you're immediately back to the image.



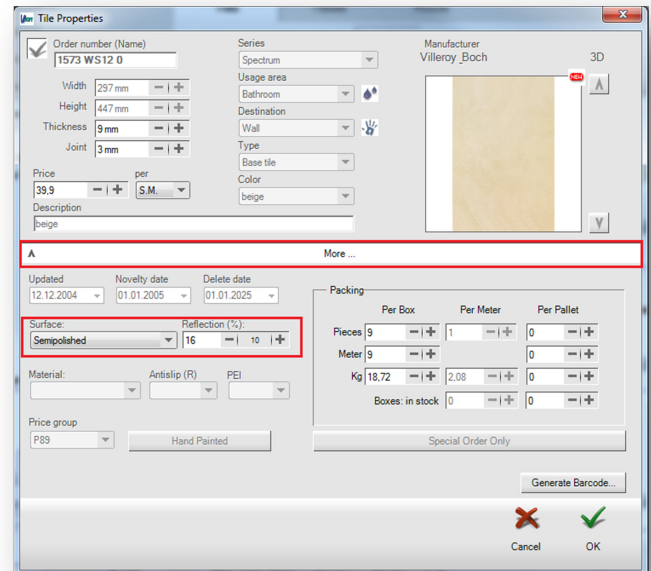
2.4 TILES REFLECTION VALUE ALSO IN PERCENTAGE

Reflection and shimmer both have a value. The value is defined by the intensity of the reflection when a visualisation programme displays photo realistic tiles. In order to make the procedure even simpler, from now on, tile reflection value is given in per cent.

Where? You can find this value in Tile Properties dialog box: Tiles > Place > Tile > button Properties.

You can see the properties of your chosen tile also in Tile Browser: open tile context

menu with a right mouse click on it > click Properties and you can expand the display with the button more....

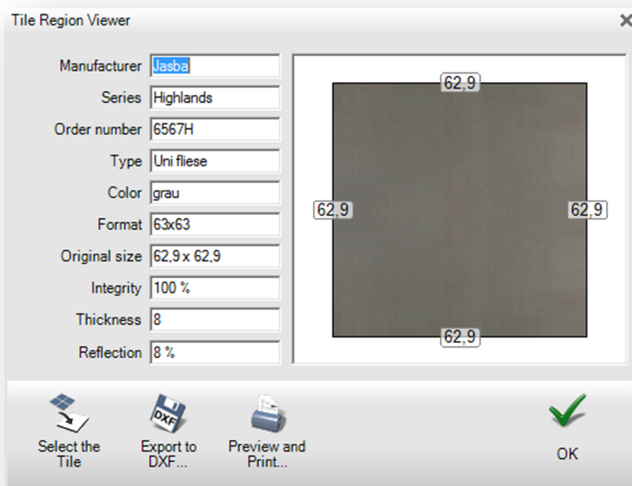


2.5 ORIGINAL SIZE INFORMATION AND REFLECTION VALUES FOR TILES

In order that you have all the required detailed information and can see this all in just one glance, there is now more information on the individual tiles.

Concretely: tile original size and reflection value in per cent is available in Tile Region Viewer.

In order to see this, follow these steps: right mouse click on tile in 2D view to open context menu and Show tile region properties, in order to see the following dialog box.



The term entirety describes when it gives the percentage information, the amount of cuts of the necessary bits of tile.

The Premium benefit:

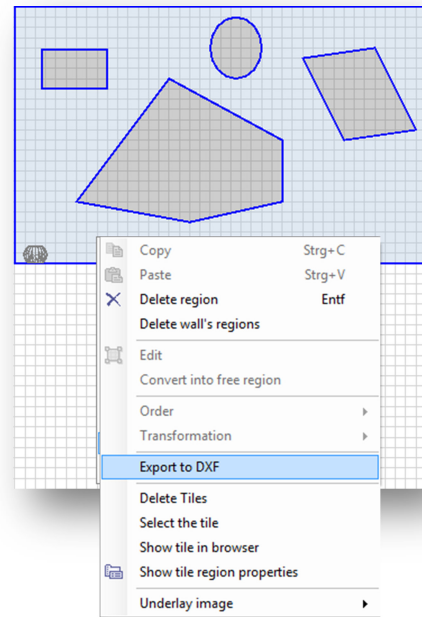
Perfect and exact planning of the laying tiles in room for individual gaps thanks to original size data.

2.6 EXPORT SINGLE REGION INTO DXF FILE FORMAT

Individual templates and step formats must be very well prepared so that they are worth all the effort and the result is perfect.

Now there is also possibility to export single region to DXF format. An advantage for the users of computer controlled cutting machines is that they are able to manufacture complicated and complex templates for many individual pieces and then put them together.

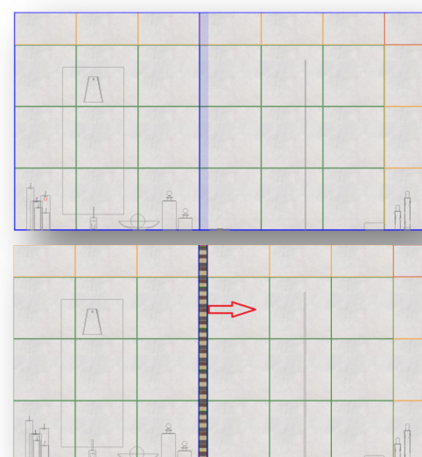
This is how it works: just right mouse click on the region to open its context menu in the 2D view > Export to DXF.



2.7 IMPROVEMENTS IN VERTICAL BORDERS

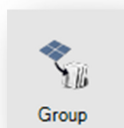
As of now vertical borders are included in the laying tiles just the same as horizontal borders.

The advantage of this can be clearly seen: you no longer have to move the tiled area in order to get the sideways border for all the tiles - ViSoft does that for you.



2.8 TILING OF MURAL FACES IN GROUPS

Save time and mouse clicks: apply the various possibilities of **tile laying** and also of **mural groups**. In this version this is possible very easily. As soon as you select a group in 2D views Mural, Mural Top or in 3D view, the function groups appear in the functional area Tiles > Place.



With this function you can define that all murals belonging to one mural surface area should be tiled identically. With this ViSoft recognises which surfaces within the group are to be tiled and misses out the corresponding sanitary objects. The advantage of this: glass sinks or porcelain toilets usefully evade the 'peer pressure' of being tiled.

2.9 SAVING OPENING PARTS OF SANITARY OBJECTS IN THE PROJECT

Everything remains as planned: the opening state of sanitary objects like, for example, a mounted open drawer in the bathroom cabinet will now be saved with the project and the next time the project is opened it will remain there in its unchanged position.

The advantage to this: you can find everything how it was the last time you used the programme and you do not need to continuously change the default position of the objects back to your desired position.

2.10 ADDING OBJECTS WITH CHOSEN VARIATIONS INTO BASKET

In this version, ViSoft Premium ensures that **material changes** to objects are now also applied in the **basket** and are **saved** there too.

You will find this security much uncomplicated: just go to the properties of the selected object in the Arge Browser, choose object variation you need and then drag the article into the basket. All changes that have been made remain. Concrete example: the selected cream coloured sink is also saved in cream in the basket and not in their basic colour white.

The same is true for objects whose materials have been worked on in 3D. Click on the object with the **right mouse button** and select **Add to Basket**. Your object creations will remain in their current form and texture in the basket, ready for you to work on them further.

2.11 SERIES ARE DISPLAYED IN THE ARGE OBJECT PROPERTIES WINDOW

What is that series called again? That's no problem, now you can correctly and quickly inform your customer or fill the gaps in your memory: ViSoft Premium version 2011-1 shows, the **series name** in the **Arge Browser**, in the dialog box Arge Object Properties, in addition to the standard information such as format, colour, article number, etc.

It's practical and both user and customer friendly.

2.12 LIVING WALL: SHOWING OUTPUT PLANS

Why not show everything that your planning has to offer? The result of this thought is that anyone who uses Living Wall can now look forward to a further **presentation opportunity**, which conveys competency and assignments to the customer. As soon as you select the functional area Output > Plans, on the active Living Wall, first the floor plan and then each selection after this and all plan pages of the room up until now appear on the second output device, a monitor that is turned towards the customer, for example.

The Premium benefit:

You can lead the conversation with your customer regarding the project without turning your, that is the primary, monitor.

The customer sits opposite you and has a screen turned towards him which omits the technical information and the programme interfaces and instead just shows the results of the project planning.

Anyone who has also installed the Living Wall in 1:1 presentation out with the software solution benefits twice as much: in addition to the customer oriented presentation on the second monitor, the planning here appears to be particularly rich in detail as a room height presentation on a one to one scale. This makes customer decisions sure and means they can experience the designs personally.

2.13 3D VIEWER HANDBOOK

You don't have to look for it on your desk anymore: now the **3D viewer handbook** is always and at all times available because as of

now you can view it just by pressing the function key F1.

There you will find lots of useful information, tips and tricks about the viewer which you can use in your everyday working life as well as for the interests of your customers who are using the viewer with a view to installing the planned new bathroom.

You can start the **ViSoft Viewer** at any time in the functional area **View > Advanced > ViSoft Viewer...**

You can also display viewer data here (data ending *.scn).

You can give your customer advice that always comes from the most current version of the ViSoft 3D viewer by downloading it from the ViSoft homepage. Then it is no problem to view all on-going projects in 3D, real time, and when desired as well as to see moving pictures through a cameral flight.

The Premium benefit:

The viewer is a free tool for planners and their customers so that they are able to animate and view in 3D finished projects at home on their own computers. Just download the viewer from the ViSoft homepage.

