



Source: Eurostat, International Limited
Consumer appliances 2020, retail volume sales in units, 2019 data.

U-MATCH

• Cassette Type • Duct Type • Floor Ceiling Type



Indoor unit



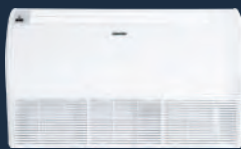
CASSETTE TYPE

INVERTER ₹32

GULD18T/A-T(P)
GULD24T/A-T(P)
GULD30T/A-T(P)
GULD42T/A-T(P)
GUD140T/A-T
GUD140T/A-T

FIXED-SPEED ₹410a

GU140T/A-K
GU160T/A-K



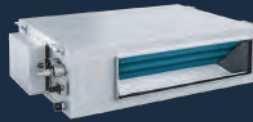
CEILING TYPE

INVERTER ₹32

GULD18ZD/A-T(P)
GULD24ZD/A-T(P)
GULD30ZD/A-T(P)
GULD42ZD/A-T(P)
GUD140ZD/A-T
GUD140ZD/A-T

FIXED-SPEED ₹410a

GU140ZD/A-K
GU160ZD/A-K



DUCT TYPE

INVERTER ₹32

GULD18P/A-T(P)
GULD24P/A-T(P)
GULD30PH/A-T(P)
GULD42PH/A-T(P)
GUD140PH/A-T
GUD140PH/A-T

FIXED-SPEED ₹410a

GU140PH/A-K
GU160PH/A-K

Outdoor unit



GULD18W/NhA-T(P)
GULD24W/NhA-T(P)
GULD30W/NhA-T(P)
GULD36W/NhA-T(P)
GULD42W/NhA-T(P)
GUD140W/NhA-X



GUD160W/NhA-X

GUL140W/A-M
GUL160W/A-M

Remote Control



Wireless remote controller

รุ่น YAC1FB1 [R32]

ใช้สำหรับ

- Floor ceiling Type
- Cassette Type

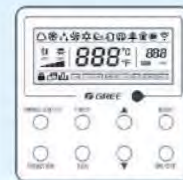


Wireless remote controller

รุ่น YAW1F9 [R410a]

ใช้สำหรับ

- Floor ceiling Type
- Cassette Type



Wired remote controller

รุ่น XK117

ใช้สำหรับ

- Duct Type

หลากหลายฟังก์ชันเพื่อความสะดวกสบาย

- Washable Filter
- Easier Maintainability
- Quality Motor
- Horizontal Swing
- Inner Groove Copper
- Compact Design
- Wide Operation range
- Wide Voltage range
- High ESP
- Turbo Function
- Child Lock
- Auto Clean
- Self Diagnosis
- High Efficiency

Cassette-Type		INVERTER							FIXED-SPEED		
Indoor unit	Model	GULD18T/A-T(P)	GULD24T/A-T(P)	GULD30T/A-T(P)	GULD36T/A-T(P)	GULD42T/A-T(P)	GULD40T/A-T	GULD60T/A-T	GU140T/A-K	GU160T/A-K	
Cooling capacity	Btu/ hr	18,772	24,181	29,702	35,313	41,851	45,700	49,400	48,100	51,200	
Maximum Power input	Watt	1,498	1,891	2,755	3,398	3,628	4,700	5,200	5,600	5,200	
Maximum Current input	A	6.89	8.92	12.64	15.58	16.66	7.20	7.60	11.20	10.30	
SEER / (EER)	Btu /Wh	19.72	19.58	18.32	18.15	18.08	(9.72)	(9.50)	8.59	9.85	
EGAT NO.5							-	-	-	-	
Noise level [High/Middle/Low]	dB(A)	42/40/39	42/40/39	48/46/42	51/48/45	51/48/45	51/48/45	52/50/48	54/51/47/45	55/51/47/45	
Air Flow Volume [Super-High/High/Middle/Low]	CFM	647/618/565/507	647/618/565/507	883/865/812/728	1,118/995/871/815	1,118/995/871/815	1,118/995/871/815	1,177/1,106/953/842	1,177	1,177	
Outline Dimension (WxDxH)	mm	840x840x240	840x840x240	840x840x240	840x840x290	840x840x290	840x840x290	840x840x290	840x840x290	840x840x290	
Package Dimension (WxDxH)	mm	963x963x325	963x963x325	963x963x325	963x963x379	963x963x379	963x963x379	963x963x379	933x903x335	933x903x335	
Net Weight / Gross Weight	kg	29/36	29/36	31/38	36/44	36/44	36/44	36/44	34/41	34/41	
Panel	Model	TF06									
Outline Dimension (WxDxH)	mm	950x950x52									
Package Dimension (WxDxH)	mm	1,033x1,038x112									
Net Weight / Gross Weight	kg	6.0/9.5									

Floor ceiling-Type		INVERTER							FIXED-SPEED	
Indoor unit	Model	GULD18ZD/A-T(P)	GULD24ZD/A-T(P)	GULD30ZD/A-T(P)	GULD36ZD/A-T(P)	GULD42ZD/A-T(P)	GUD140ZD/A-T	GUD160ZD/A-T	GU140ZD/A-K	GU160ZD/A-K
Cooling capacity	Btu/ hr	16,672	24,662	28,820	35,490	40,901	45,700	54,500	48,100	54,600
Maximum Power input	Watt	1,373	2,059	2,657	3,097	3,505	4,300	5,400	5,200	5,300
Maximum Current input	A	6.33	9.50	12.22	14.22	16.04	6.60	7.70	10.40	10.50
SEER / (EER)	Btu /Wh	17.26	17.84	17.95	19.24	18.66	10.63	10.09	9.25	10.30
EGAT NO.5							-	-	-	-
Noise level [High/Middle/Low]	dB(A)	42/39/36	44/41/38	47/45/43	50/48/44	50/48/44	50/48/44	53/49/45	54/53/52/51	54/53/52/51
Air Flow Volume [Super-High/High/Middle/Low]	CFM	500/471/412/353	765/718/646/553	942/883/794/742	1,236/1,177/1,059/881	1,236/1,177/1,059/881	1,236/1,177/1,059/881	1,354/1,295/1,100/936	1,295	1,471
Outline Dimension (WxDxH)	mm	870x665x235	1,200x665x235	1,200x665x235	1,570x665x235	1,570x665x235	1,570x665x235	1,570x665x235	1,570x665x235	1,570x665x235
Package Dimension (WxDxH)	mm	1,033x770x300	1,363,770,300	1,363,770,300	1,729x770x300	1,729x770x300	1,729x770x300	1,729x770x300	1,729x770x300	1,729x770x300
Net Weight / Gross Weight	kg	26/31	31/37	32/38	42/49	42/49	42/49	42/49	43/50	45/52

Duct-Type		INVERTER							FIXED-SPEED	
Indoor unit	Model	GULD18P/A-T(P)	GULD24P/A-T(P)	GULD30P/A-T(P)	GULD36P/A-T(P)	GULD42P/A-T(P)	GUD140PH/A-T	GUD160PH/A-T	GU140PH/A-K	GU160PH/A-K
Cooling capacity	Btu/ hr	18,220	24,545	28,977	34,789	39,773	45,700	54,500	48,100	54,600
Maximum Power input	Watt	1,498	2,045	2,769	3,304	3,410	4,700	5,450	5,250	5,350
Maximum Current input	A	6.92	9.41	12.72	15.13	15.66	7.20	7.70	10.50	10.60
SEER / (EER)	Btu /Wh	17.71	18.60	17.20	18.53	18.32	(9.72)	10.00	9.16	10.21
EGAT NO.5							-	-	-	-
Noise level [High/Middle/Low]	dB(A)	42/39/36	39/37/36	44/42/40	41/40/38	41/40/38	41/40/38	41/39/38	45/44/41/37	47/45/40/37
Air Flow Volume [Super-High/High/Middle/Low]	CFM	559/518/483/412	706/682/646/553	1,059/894/812/752	1,295/1,177/1,023/883	1,295/1,177/1,023/883	1,295/1,177/1,018/877	1,412/1,153/938/812	1,295	1,530
External Static Pressure (Rated)	Pa	25	25	37	50	50	50	50	50	50
External Static Pressure (Range)	Pa	0-50	0-75	0-150	0-150	0-150	0-150	0-200	0-150	0-150
Outline Dimension (WxDxH)	mm	1,000x450x200	1,300x450x220	1,000x700x300	1,400x700x300	1,400x700x300	1,400x700x300	1,400x700x300	1,400x700x300	1,400x700x300
Package Dimension (WxDxH)	mm	1,308x568x275	1,628x578x300	1,205x813x360	1,601x813x365	1,601x813x365	1,601x813x365	1,601x813x365	1,601x813x365	1,601x813x365
Net Weight / Gross Weight	kg	25/30	30/37	40/46	49/55	49/55	49/55	56/63	52/59	54/61

Outdoor Unit	Model	INVERTER							FIXED-SPEED	
		GULD18W/NhA-T(P)	GULD24W/NhA-T(P)	GULD30W/NhA-T(P)	GULD36W/NhA-T(P)	GULD42W/NhA-T(P)	GUD140W/NhA-X	GUD160W/NhA-X	GUL140W/A-M	GUL160W/A-M
Power Supply	V/Ph/Hz	220~240V/1Ph/50Hz							380~415/3Ph/50Hz	
Refrigerant	type	R32							R410a	
Refrigerant Charging	kg	1.00	1.60	1.60	2.00	2.70	2.80	3.60	2.95	3.10
Connecting Pipe Inch. (mm)	Liquid	1/4"(6.35)	3/8"(9.52)	3/8"(9.52)	3/8"(9.52)	3/8"(9.52)	3/8"(9.52)	3/8"(9.52)	3/8"(9.52)	3/8"(9.52)
	Gas	1/2"(12.7)	5/8"(15.88)	5/8"(15.88)	5/8"(15.88)	5/8"(15.88)	5/8"(15.88)	5/8"(15.88)	5/8"(15.88)	5/8"(15.88)
Sound Pressure Level	dB(A)	52	52	52	53	55	57	57	57	57
Air Flow Volume	CFM	1,766	2,119	2,119	2,354	3,472	3,472	3,884	3,472	3,472
Outline Dimension (WxDxH)	mm	818x302x596	892x340x698	892x340x698	920x370x790	940x460x820	940x460x820	900x340x1,345	940x460x820	940x460x820
Package Dimension (WxDxH)	mm	948x420x645	1,029x458x750	1,029x458x750	1,083x488x855	1,083x573x973	1,083x573x973	1,048x458x1,500	1,083x573x973	1,083x573x973
Net weight / Gross weight	kg	39/42	51/55	51/55	58/63	80/92	99/111	112/122	93/103	95/105
Net Distance (Height/Length)	m	20/35	25/50	25/50	25/50	30/65	30/75	30/75	30/50	30/50

Note :

- The cooling capacity stated above is measured under following conditions : Indoor Condition: 27°C (81°F) DB/19°C (66.6°F) WB; Outdoor Condition: 35°C (95.4°F) DB/24°C (75.6°F) WB.
- Noise is tested in the semi-anechoic room, so it should be slightly higher in the actual Operation due to environmental change.
- Due to our policy of innovation some specifications may be changed without notification

