



07TEU Series

Water Cooled Condensing Unit

Nominal Cooling Range 1-5 Tons

Refrigerant R-410A



World's No.1 Air Conditioning Expert

www.bkairsupply.com

07TEU Series



07TEU water cooled condensing unit is small, compact and use a minimum of water. Each unit may be installed single or in multiples, on the floor, suspended from a ceiling or positioned in a closet. Seven sizes, when matched or mix-matched with evaporator sections provide a wide range of capacities.

Features

- **Compatible fittings** permit either mechanical (quick) or sweat connection without the use of adapters, and liquid & suction service valve.
- **Lasting beauty and protection** of Weather Armor casing is positive shields against rust and corrosion. Cabinet is made from galvanized steel, bonderized, and painted with baked enamel.
- **Low operating sound** permits flexibility of unit location. Cabinet is internally insulated to absorb operating sound. Vibration isolators are fitted under both compressor and condenser.
- **Time Guard circuit** prevents compressor shot cycling on safety device, thermostat or power interruption by preventing compressor from restarting for 3 minutes. (Option for all models)
- **Highly efficient** plate heat exchanger minimizes condenser water flow requirement. Unit efficiency is substantially higher than for comparable air-cooled condensing units.
- **Start capacitor, running capacitor and relay for compressor**
- **Environment friendly with R-410A refrigerant for all range comply.**

Physical Data

| Description | | Water Cooled Condensing Unit | | | | | | |
|-------------------------|---------------------------|------------------------------------|--------------|--------------|--|--------------|--------------|--------------|
| Model | | 07TEU012R100 | 07TEU018S101 | 07TEU024S101 | 07TEU036S101 | 07TEU036S301 | 07TEU048S301 | 07TEU060S301 |
| Nominal Capacity | BTU/Hr. | 12,000 | 18,000 | 24,000 | 36,000 | 36,000 | 48,000 | 60,000 |
| Power Supply | V/Ph/Hz | 220 / 1 / 50 | | | | 380 / 3 / 50 | | |
| Operating Current | A. | 5.2 | 8.1 | 8.8 | 16.7 | 5.7 | 10.7 | 9.8 |
| Compressor | Quantity | 1 | 1 | 1 | 1 | 1 | 1 | 1 |
| | Type | Rotary | Scroll | | | | | |
| Condensor | Type | Water Cooled, Plate Heat Exchanger | | | | | | |
| Water Connection | Type | Female Pipe Thread | | | | | | |
| | Inlet & Outlet | Inch. | 3/4" | | | | | |
| Refrigerant Connection | Liquid | Inch. | 1/4" | 3/8" | | | | |
| Pipe | Suction | Inch. | 1/2" | 5/8" | | 3/4" | | 7/8" |
| | Height | mm. | 400 | | 560 | | | |
| Overall Dimension | Width | mm. | 355 | | 405 | | 455 | |
| | Depth | mm. | 355 | | 405 | | 455 | |
| Refrigerant | Type | R-410A | | | | | | |
| | Pre-Charging from Factory | kg. | 0.400 | 0.400 | 0.800 | 0.850 | 0.850 | 0.850 |
| High Pressure Switch | psi | None | | | 600 ±25 / 420 ±15 (Cut out / Cut in) - Auto Restart type | | | |
| Low Pressure Switch | psi | None | | | 65 ±5 / 115 ±5 (Cut out / Cut in) - Auto Restart type | | | |
| Approx.Operating Weight | Kg. | 30.0 | 31.0 | 44.0 | 53.0 | 53.0 | 56.0 | 65.0 |

Performance Data

| Model | SST (°F) | Leaving Water Temperature Degree (F) | | | | | | | | |
|--------------|-------------|--|------|-------|-------|------|-------|-------|------|-------|
| | | 100 | | | 110 | | | 120 | | |
| | | CAP | KW | GPM | CAP | KW | GPM | CAP | KW | GPM |
| 07TEU012R100 | 30 | 10.33 | 0.81 | 2.62 | 8.83 | 0.96 | 2.42 | 7.32 | 1.16 | 2.26 |
| | 40 | 12.41 | 0.81 | 3.03 | 10.68 | 0.98 | 2.81 | 8.92 | 1.19 | 2.60 |
| | 50 | 14.73 | 0.80 | 3.49 | 14.79 | 0.99 | 3.63 | 10.71 | 1.22 | 2.98 |
| 07TEU018S101 | 30 | 16.30 | 1.44 | 4.24 | 13.95 | 1.72 | 3.96 | 11.56 | 2.06 | 3.72 |
| | 40 | 19.57 | 1.44 | 4.90 | 16.87 | 1.75 | 4.57 | 14.07 | 2.13 | 4.27 |
| | 50 | 23.28 | 1.43 | 5.63 | 20.20 | 1.76 | 5.24 | 16.93 | 2.18 | 4.87 |
| 07TEU024S101 | 30 | 20.26 | 1.77 | 5.26 | 17.50 | 2.12 | 4.95 | 14.51 | 2.46 | 4.58 |
| | 40 | 24.47 | 1.78 | 6.11 | 21.20 | 2.15 | 5.71 | 17.62 | 2.54 | 5.26 |
| | 50 | 29.28 | 1.78 | 7.07 | 25.48 | 2.16 | 6.57 | 21.20 | 2.60 | 6.02 |
| 07TEU036S101 | 30 | 30.38 | 2.65 | 7.88 | 26.23 | 3.17 | 7.41 | 21.77 | 3.68 | 6.87 |
| | 40 | 36.69 | 2.67 | 9.16 | 31.79 | 3.22 | 8.56 | 26.42 | 3.80 | 7.88 |
| | 50 | 43.88 | 2.66 | 10.59 | 38.20 | 3.23 | 9.84 | 31.82 | 3.89 | 9.02 |
| 07TEU036S301 | 30 | 37.60 | 3.18 | 9.69 | 32.45 | 3.80 | 9.08 | 26.92 | 4.41 | 8.40 |
| | 40 | 45.42 | 3.20 | 11.27 | 39.36 | 3.86 | 10.51 | 32.70 | 4.55 | 9.65 |
| | 50 | 54.34 | 3.19 | 13.05 | 47.28 | 3.88 | 12.10 | 39.39 | 4.66 | 11.06 |
| 07TEU048S301 | 30 | 41.30 | 2.80 | 10.20 | 38.40 | 3.24 | 9.90 | 35.30 | 3.73 | 9.60 |
| | 40 | 50.40 | 2.40 | 11.70 | 47.10 | 3.19 | 11.60 | 42.50 | 3.68 | 11.00 |
| | 50 | 61.00 | 2.35 | 13.80 | 57.00 | 3.13 | 13.50 | 52.90 | 3.61 | 13.00 |
| 07TEU060S301 | 30 | 54.50 | 3.84 | 13.50 | 50.50 | 4.36 | 13.10 | 46.80 | 4.97 | 12.80 |
| | 40 | 66.00 | 3.86 | 15.80 | 62.00 | 4.38 | 15.40 | 57.50 | 4.98 | 14.90 |
| | 50 | 80.00 | 3.88 | 18.60 | 75.00 | 4.39 | 18.00 | 69.50 | 4.98 | 17.30 |

CAP : Capacity (1000BTU/hr)

KW : Unit Power Supply

GPM : Cooling Water Flow Rate

SST : Saturated Suction Temperature

Condition :

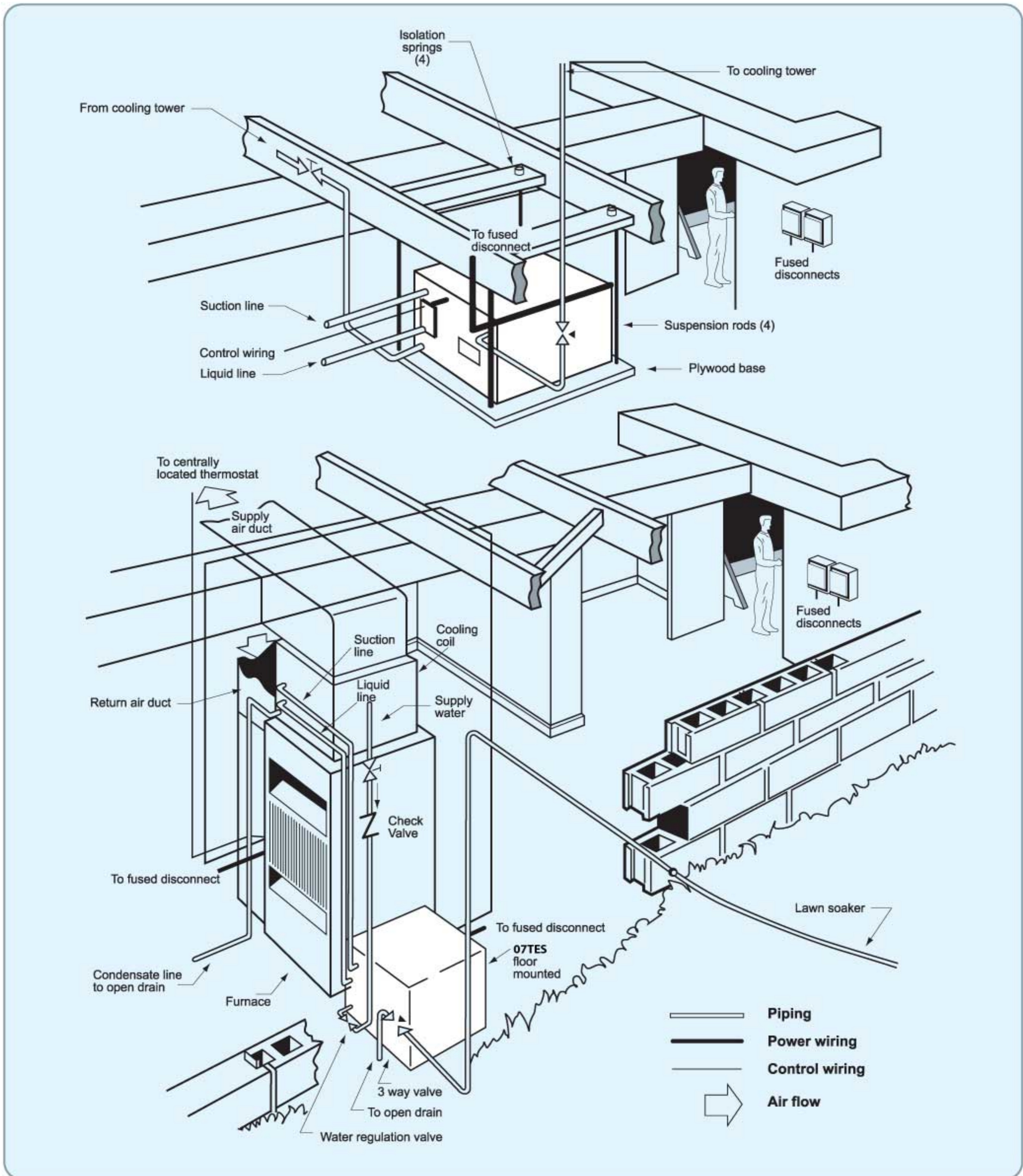
1. Interpolation is permissible. Do not extrapolate

2. Rating base on 15 °F subcooling is condensor, 10 °F superheat in evaporator, 10 °F water temperature rise , 0.0005 fouling factor.

Water Pressure Drop (In Ft. Wg.)

| Model | Flow Rate (GPM) | | | | | | | | | | | | | | | | |
|--------------|-----------------|-----|-----|-----|-----|------|------|------|-----|-----|-----|------|------|------|------|------|------|
| | 2 | 3 | 4 | 5 | 6 | 7 | 8 | 9 | 10 | 11 | 12 | 13 | 14 | 15 | 16 | 17 | 18 |
| 07TEU012R100 | 2.1 | 2.6 | 4.1 | 5.6 | | | | | | | | | | | | | |
| 07TEU018S101 | | 2.1 | 4.0 | 5.9 | 7.8 | 9.7 | | | | | | | | | | | |
| 07TEU024S101 | | 2.8 | 4.7 | 6.6 | 8.5 | 10.4 | | | | | | | | | | | |
| 07TEU036S101 | | | | 5.2 | 6.7 | 8.6 | 10.5 | 12.4 | | | | | | | | | |
| 07TEU036S301 | | | | 5.2 | 6.7 | 8.6 | 10.5 | 12.4 | | | | | | | | | |
| 07TEU048S301 | | | | | | | | 5.7 | 6.3 | 7.8 | 9.4 | 10.6 | 12.5 | 13.3 | | | |
| 07TEU060S301 | | | | | | | | | | 6.2 | 7.4 | 8.5 | 9.7 | 10.4 | 11.6 | 12.9 | 14.1 |

Typical piping and wiring



บริษัท บี.เค.แอร์ซัพพลาย จำกัด
B.K. AIRSUPPLY CO.,LTD.

611,613 ถนนพระราม 3 แขวงบางโพงพาง เขตยานนาวา กรุงเทพฯ 10120
 611,613 Rama3 Rd. Bangpongpan, Yannava, Bangkok 10120
 Tel : 02-284-2826, 02-294-5260, 02-294-5261, 02-294-2972
 Fax : 02-294-2973

Carrier reserves the right to make changes in specifications without prior notice.
 บริษัทฯ ขอสงวนสิทธิ์ที่จะเปลี่ยนแปลงรายละเอียดข้างต้น โดยมีต้องแจ้งให้ทราบล่วงหน้า



YOUR CARRIER MAN :