



#### SERVICES AVAILABLE

Consulting Service

Application Development

Data Management

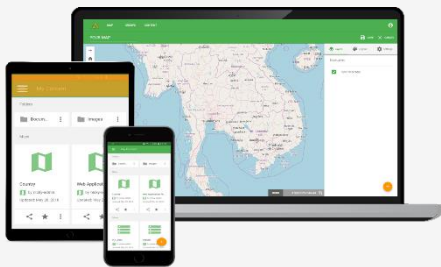
Maintenance

Surveying

Hardware Support

## MAPBOSS DATASHEET

# aWhere Platform 3.0



## aWhere Platform Version 3.0

Geospatial data management software for creating, sharing maps, apps and being an enterprise's portal for geographic information. Let your organization work together fully and efficiently. The aWhere Platform can be divided into the following sections.

Create a central corporate database

aWhere can create a database, gather information and secure your data efficiency. There is an intermediary between data access. Database editing support the main principle is to reduce data redundancy.

Data Security Certification

aWhere protects data from unauthorized access. It can be used only by authorized users. It is safe to use in the network and have a good backup system. aWhere is also designed for those who are just the beginner so, it can be used easily.

Supports a variety of formats

aWhere supports a variety of import and export data formats. Providing easily accessibility to geographic data. It also allows users to collect and share information in different ways.

Keep update and develop the system with the latest technology trends

aWhere develops more advanced technology based on the trend of technology to support and maximize user experience.

Easy to use

aWhere is designed to be easy to use, flexible, and usable on any device via a web browser or tablet and support for simultaneous use from multiple users.

Connects to the existing system

aWhere fully supports connectivity to legacy systems. Every organization can work properly maximum performance.

Customizable as required

aWhere supports customization to meet the requirements of every organization.

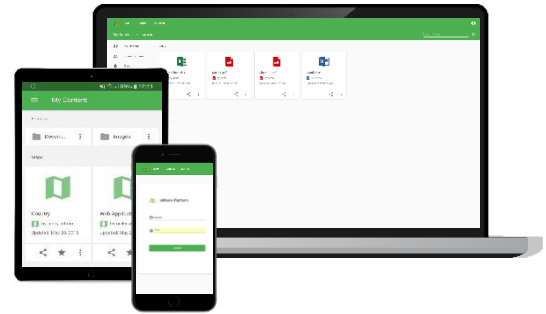


## MAPBOSS DATASHEET

### SERVICES AVAILABLE

Consulting Service  
 Application Development  
 Data Management  
 Maintenance  
 Surveying  
 Hardware Support

# aWhere Platform 3.0



#### General features

- As a licensed software, 1 CPU, unlimited Core

#### Supported devices

- Supports on general computer
- Works on tablets
- Supports smartphones

#### Sharing and Integrating

- Can create user groups
- Can add / delete the group members
- Can share the content in the group
- Can publish information in person
- The license level can be set to View or edit

#### Data management

- Can create folders to store different types of data
- Can create subfolders (Folder in the folder)
- Can change the icon of each type of information
- Can move files or subfolders into folders
- Can upload various types of documents such as Excel, Word, PowerPoint, PDF, etc.
- Can upload various image files such as PNG, JPG, JPEG, BMP, GIF etc.
- Import data from CSV, TXT, SQL, GeoJSON, ESRI Shapefile files
- Database can be created
- Can create a map
- Can create an application from a template such as a dashboard.
- Can search the contents from the name, such as file name, folder name, database name
- Can add, edit, delete database data in both tabular and unstructured Private Content layers
- Can search the database in both the table and the data layer
- Can find information within files or documents in the system.
- Can relate between the table or layer
- Can create a service from the data layer
- Supports OGC compliant map services as follows: WMS, WFS, WMTS
- Supports Vector maps in Vector Tiles
- Data can be exported in the following formats: GeoJSON, CSV, ESRI Shapefile, HML, GML2, GML3.1 and GML3.2



## SERVICES AVAILABLE

Consulting Service

Application Development

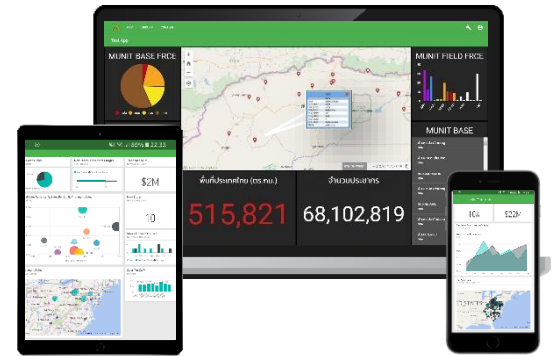
Data Management

Maintenance

Surveying

Hardware Support

## MAPBOSS DATASHEET



# aWhere Platform 3.0

### Data management

- Can download files from uploaded files

### Map management

- There is the table of Content for adding, modifying, deleting layers displayed on the map.
- Supports ArcGIS Server Web Service, WMS OGC Web Service, WMTS OGC Web Service
- The layers can be reordered
- Group layers can be grouped
- Supports map display in Vector Tiles format
- Style can be customized as follows:
  - The rectangular shape of the circle is a rectangular triangle (Simple Marker Symbol).
  - Symbol can be changed to picture or icon (Picture Marker Symbol)
  - Can adjust the color and sizes
- Can customize symbols, lines, and polygons by adjusting colors and sizes
- Supports symbolic (Style) based on attributes (Unique Value Renderer)
- Labeling for GIS data can be displayed on the map
- Measuring area and distance function can be displayed the units in Thai. The user can select the unit such as, ral.
- Drawing function lets the user draw graphic on the map and can be exported to feature service.
- There are functions for selecting spatial data in various formats such as Intersect, Erase, etc.

### Administration management

- Can add unlimited number of users
- Can assign role to the users
- Can add, modify, delete role
- Supports authentication with Windows user domain

**LOCATED AT**  
 MAPBOSS Co., Ltd.  
 171/251  
 Phra Pradaeng  
 Samutprakharn 10130

**CONTACT US AT**  
 Office: 02 051 3165  
 E-mail: info@mapboss.co.th

**MORE INFORMATION**  
[www.mapboss.co.th](http://www.mapboss.co.th)