

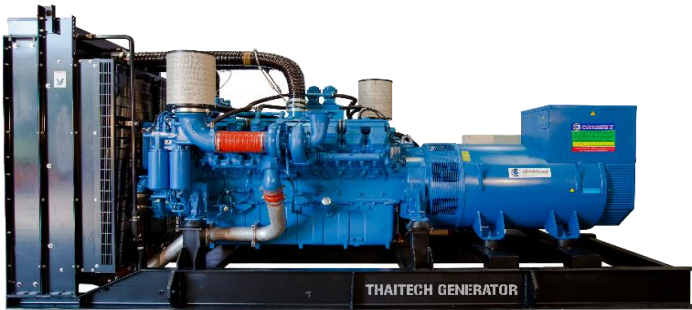
Thaitech Generator

The leader of Genset



Model : TTG-350M

Powered by MTU Diesel Engines



Technical Data

Standby	400 KVA / 320 KW
Prime	350KVA / 280 KW
Rated Speed	1500 RPM
Output Frequency	50 Hz400/230V
Rated Voltage	400 / 230V
Phase	3
Power Factor	0.8
Ambient Temperature	≤40°C

Engine Data

Cycle	4- strokes
Combustion System	Common rail fuel injection
Compression ratio	17.5:1
Cooling System	aircooling
Total Coolant Capacity	84L
50% Fuel Consumption	44.22 L/h
75% Fuel Consumption	61.5 L/h
Prime power Fuel Consumption	79.36 L/h
Standby Power Fuel Consumption	91.26 L/h
Engine Model:	MTU 8V1600G10F
Number of cylinders	8 in V
Bore&Stroke	122*150 (mm)
Displacement	14L
Aspiration	Turbo, Air/Air Cooling

Basic Configuration

- Starting battery
- Automatic mains failure control panel
- Generator Circuit Breaker
- Fuel tank

Alternator Data

Number of Phase	3
Connection Type	3 Phase and 4 Wires, "Y" type connecting
Number of Bearing	1
Protection Grade	IP23
Exciter Type	Self Excited / PMG
Insulation Class	H
Temperature Rise	H
Alternator Capacity	400KVA / 320 KW
Alternator Efficiencies	0.942
Execution	Brushless

Dimensions and Weight

Genset Type	Open	Canopy
Length (mm)	3050	4750
Width (mm)	1630	1680
Height (mm)	1960	2400
Weight (kg)	3850	5600

photographs are for illustrative purposes only and may not reflect final specification.

This document is not contractual. According to our product improvement, we reserve the right to change specifications without notice.

Certified Company
ISO 9001
ISO 14001



THAITECH GENERATOR Co.,Ltd.
Office : 50/10 Metalian Tower3 Rama1 Rd., Pathumwan, Bangkok 10330 Tel. +662-612-3533 Fax. +662-612-3535 #409
Factory : 44/3 Moo 6 Tambon Klongkone, Amphermueang, Samutsongkharm province 75000 Tel. +663-475-6471
Email : thaitechgen@yahoo.com www.thaitechgen.com