

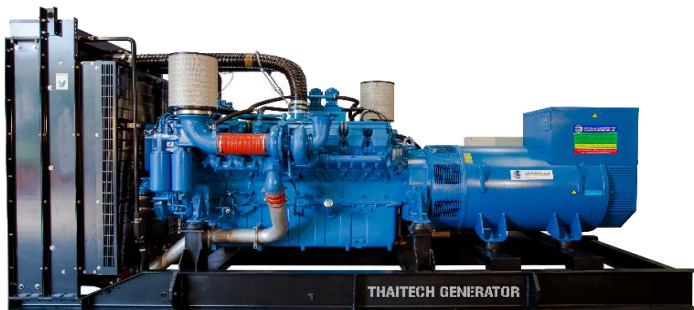
Thaitech Generator

The leader of Genset



Model : TTG-300M

Powered by MTU Diesel Engines



Technical Data

Standby	335 KVA / 268 KW
Prime	300 KVA / 240 KW
Rated Speed	1500 RPM
Output Frequency	50 Hz/400/230V
Rated Voltage	400 / 230V
Phase	3
Power Factor	0.8
Ambient Temperature	≤40°C

Engine Data

Cycle	4- strokes
Combustion System	Common rail fuel injection
Compression ratio	17.5:1
Cooling System	aircooling
Total Coolant Capacity	84L
50% Fuel Consumption	36.64 L/h
75% Fuel Consumption	49.94 L/h
Prime power Fuel Consumption	64.65 L/h
Standby Power Fuel Consumption	74.35 L/h
Engine Model:	MTU 6R1600G20F
Number of cylinders	6 in line
Bore&Stroke	122*150 (mm)
Displacement	11L
Aspiration	Turbo, Air/Air Cooling

Basic Configuration

- Starting battery
- Automatic mains failure control panel
- Generator Circuit Breaker
- Fuel tank

Alternator Data

Number of Phase	3
Connection Type	3 Phase and 4 Wires, "Y" type connecting
Number of Bearing	1
Protection Grade	IP23
Exciter Type	Self Excited / PMG
Insulation Class	H
Temperature Rise	H
Alternator Capacity	350KVA / 280 KW
Alternator Efficiencies	0.935
Execution	Brushless

Dimensions and Weight

Genset Type	Open	Canopy
Length (mm)	3120	4350
Width (mm)	1180	1380
Height (mm)	1800	2250
Weight (kg)	2950	4500

photographs are for illustrative purposes only and may not reflect final specification.

This document is not contractual. According to our product improvement, we reserve the right to change specifications without notice.

Certified Company
ISO 9001
ISO 14001



THAITECH GENERATOR Co.,Ltd.
Office : 50/10 Metalian Tower3 Rama1 Rd., Pathumwan, Bangkok 10330 Tel. +662-612-3533 Fax. +662-612-3535 #409
Factory : 44/3 Moo 6 Tambon Klongkone, Amphemeung, Samutsongkharm province 75000 Tel. +663-475-6471
Email : thaitechgen@yahoo.com www.thaitechgen.com