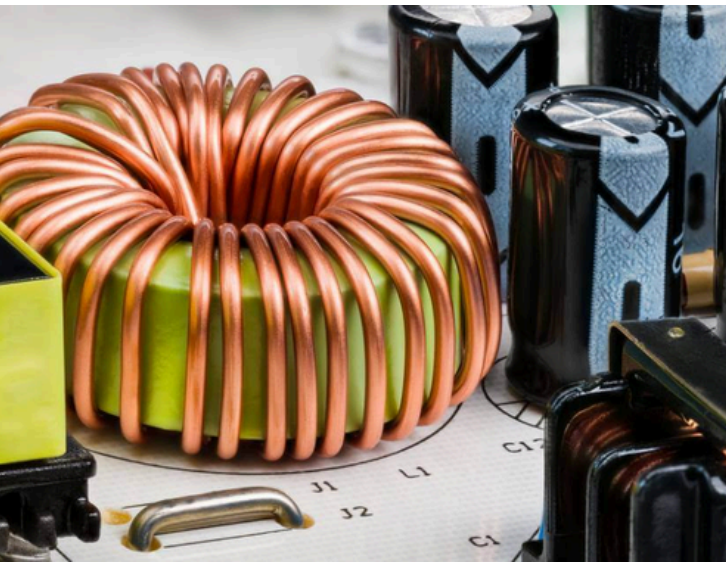




Product Catalog

2025/2026



Content

CHAPTER 1 **3**

Power Energy Solutions

CHAPTER 2 **9**

Oscilloscope & Measurement

CHAPTER 3 **20**

Frequency Measurement

CHAPTER 4 **25**

EMC / EMI / EMF Solution

CHAPTER 5 **31**

Environmant Test Chamber

Faith

ROHDE & SCHWARZ
Make ideas real



HAROGIC

WAVECONTROL

YOKOGAWA



OWON®

GRAPHTEC

LANGER
EMV-Technik



PACIFIC
POWER SOURCE



Partner®

CHAPTER 1

DC Power Supplies



FTB 9000 SERIES

Bidirectional programmable DC power supply

- Output voltage: 80 V up to 2250 V
- Output current: up to ± 4500 A
- Output power: standalone 5 kW up to ± 180 kW, parallel up to ± 1800 kW
- CV, CC, CP, CR function



FTP 9000 SERIES

High-Power programmable DC power supply

- Active Power Factor Correction (PFC) for efficiency
- Output voltage: 80 V up to 2250 V
- Output current: 20 A up to 6120 A
- Output power: 5 kW up to 180 kW, expendable up to 1800 kW
- CV, CC, CP, Operation mode



FAITH FTDM SERIES

Modular bidirectional test power source

- Ultra-high power density, up to 3U/60kW
- Output Voltage: 2.5V up to 1000V
- Output current: up to ± 300 A
- Output power: up to 60 kW
- Integrated off-grid and grid-connected switching function



FAITH FL SERIES

Portable Programmable DC Power Supply

- Voltage levels included: 40V, 80V, 160V
- Current levels included: 4A, 6A, 8A, 12A, 16A
- Single unit power output range: 300W/400W
- Battery charging function
- LCD display with wide viewing angle and high brightness



FTP1000 SERIES

Small Bench Programmable DC Source

- Output voltage: 0 V to 3000 V
- Output current: 0 A to 120 A
- Output power: 600W/900W/1200W/1500W/1800W
- Small size, 1U/half 19 inch or full 19 inch
- Standard RS232 and LAN, optional RS485



FTP1200 SERIES

Small Bench Programmable DC Source

- Output voltage: 0 V to 3000 V
- Output current: 0 A to 120 A
- Output power: 600W/900W/1200W/1500W/1800W
- Small size, 1U/half 19 inch or full 19 inch
- Standard RS232 and LAN, optional RS485

CHAPTER 1

DC Power Supplies



FTG SERIES

Modular high-power programmable DC power supply

- Output voltage: 10 V up to 1500 V
- Output current: 0 A to 1200 A
- Output power: 4 kW to 600 kW
- CV, CC, CP operation modes
- High Precision V & I measurement
- Foldback protection



FTP SERIES

Programmable DC power supply

- Output voltage: 40 V up to 1500 V
- Output current: 3.5 A up to 240 A
- Output power: 2 kW, 3.2 kW, 6.5 kW
- CV, CC, CP, Operation modes
- Easy Master-Slave parallel or serial
- Precision V & I measurement



FTL3000 SERIES

Bench linear triple channel DC power supply

- 2U half-rack instrument delivers up to 540 W of power with low ripple and noise, or 180 W per channel
- Linear type high resolution, high precision (1mV/1mA)
- Save and recall up to 40 groups of V/I setups



FTL SERIES

High Precision DC power supply

- Voltage: 15V, 20V, 30V, 36V, 45V, 60V, 80V, 120V, 180V
- Ultra high resolution and accuracy of 1mV/1mA
- Power: 90W to 1500W
- < 0.01% low regulation rate
- OCP, OVP, OPP, OTP, reverse polarity protection, etc.



FTLP SERIES

Portable Programmable DC Power Supply

- Output voltage: 0.5 V to 162 V
- Output current: 0 A to 16.4 A
- Output power: 100W, 180W
- Minimum dimension
- CC, CV, CP output modes, automatic crossover between CC and CV modes



FTP 3000 SERIES

Series wide range programmable DC power supply

- Output voltage: 0 V to 600 V
- Output current: 0 A to 80 A
- Output power: 900 W, 1500 W
- Quick call, one-click call test parameters
- CV, CC, CP operation modes

CHAPTER 1

DC Electronic Load



FT68200A/AL/E SERIES

High-power DC electronic load

- Voltage Range: 150 V, 600 V, 1200 V
- Current Range: 100A/kW (150V), 70A/kW (600V), 40A/kW (1200V), 2400A max
- Rated power: 4kW to 60kW
- Master-slave parallel operation, power expandable up to 600kW



FTR9000 SERIES

Regenerative high-power programmable DC

- Single unit: voltage: 0V to 2250V
- Current: 0A to 4500A
- Power: 0kW to 180kW, can reach 1.8MW parallel
- Battery discharge test function
- Voltage precision: 0.05%+0.05% F.S; Current accuracy: 0.1%+0.1% F.S



FT6400A SERIES

Medium-power DC electronic load

- Voltage Range: 120 V, 500 V,
- Current Range: 30 A, 45 A, 65 A, 120A, 240 A
- Rated power: 900 W to 6000 W
- Battery capacity and internal resistance test
- OVP, OCP, OPP, OTP, voltage reverse protections etc.



FT NZ/N SERIES

Ultra low voltage and high current DC load

- Low voltage load capacity can reach 0V@1200A, 0.2V@5000A
- The NZ series supports 0V full current load and reverse pole test
- Battery capacity and battery internal resistance test function
- RS232, RS485, LAN, USB, CAN (optional)



FT63200A/E SERIES

Medium Power Programmable DC electronic load

- Voltage level: 150V, 600V, 1200V
- Single power: 750W ~ 3000W
- High power density design, the whole machine can achieve 3kW/2U
- CC/CV/CR/CP/CRD/CPD/CV+CC/CR+CC/CP+CC operation mode



FT6110 SERIES

Multi-channel electronic Load Array

- Channel modular design is small, can achieve 3U/48CH
- Electrical isolation between channels
- Power Range: 50W to 1080W
- Voltage specifications: 80V, 100V, 500V
- OCP/OVP/OPP/OTP multiple protection

CHAPTER 1

DC Electronic Load



FT63000 SERIES

Small and medium power electronic loads

- Voltage level: 120 V, 500 V
- Scope of power: 150 W, 300 W, 600 W, 900 W, 1350 W, 1800 W
- On-load current range up to 240A
- Dynamic test frequency up to 20kHz
- Quick call, one-key call test function



FT66100A SERIES

Multi-channel DC electronic load

- 8-inch color display, can display 6 channels data and set parameters at the same time
- 5-bit data, 0.05% accuracy, 20kHz dynamic frequency
- Two short-circuit states, switching and delay



FT6200A SERIES

Low-power Bench DC electronic load

- Voltage range: 150 V, 500 V
- Current range: 15 A, 30 A
- Rated power: 150 W, 300 W
- Min resolution: voltage 0.5mV, current 0.05mA
- Fast NG/GO detection to tell if the DUT is within specification
- \pm OVP, \pm OCP, \pm OPP, \pm LVP, OTP

CHAPTER 1

Battery Solutions



FT8330 SERIES

Battery cell simulating power supply

- Voltage output: 0V ~ 6V
- Current output: 0 ~ 1A/0 ~ 2A/0 ~ 3A
- Voltage accuracy, resolution up to 1/10,000
- The number of channels can be up to 36ch
- Professional testing software, supporting data reporting and data analysis



FT8340 SERIES

Bidirectional battery cell simulating power supply

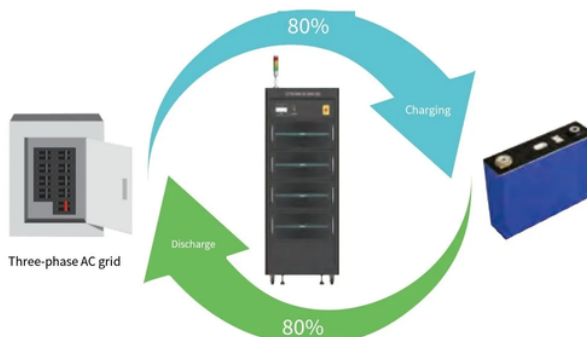
- Voltage range: $\pm 5V/\pm 6V/\pm 15V/\pm 20V$
- Current range: $\pm 1A/\pm 2A/\pm 3A/\pm 5A/\pm 10A$
- Two current ranges, uA level measurement
- Seamless switching between source and load
- The number of channels: 4ch, 8ch, 12ch



FT8350 SERIES

Multi-channel Battery Simulator

- Voltage range: 6V, 15V, 20V
- Current range: $\pm 1A, \pm 2A, \pm 3A, \pm 5A$
- Voltage accuracy up to 0.01% F.S
- Dual current range, automatic switching
- Small size, high integration, 3U/24CH
- Charge/Discharge testing, battery simulation, SOC simulation, pulse function



FT8360 SERIES

Battery charge and discharge equipment

- Modular design, each module for an independent channel
- multi-channel parallel function, parallel current up to 2400A
- High measurement accuracy, voltage, current accuracy of 0.03%F.S
- With fast current response, response time $\leq 3ms$
- High-speed data recording, interval time 10ms
- Each channel can detect different types of batteries, and completely independently work in different modes, without affecting each other

CHAPTER 1

AC Power Supply



FTPF SERIES

Programmable AC power supply

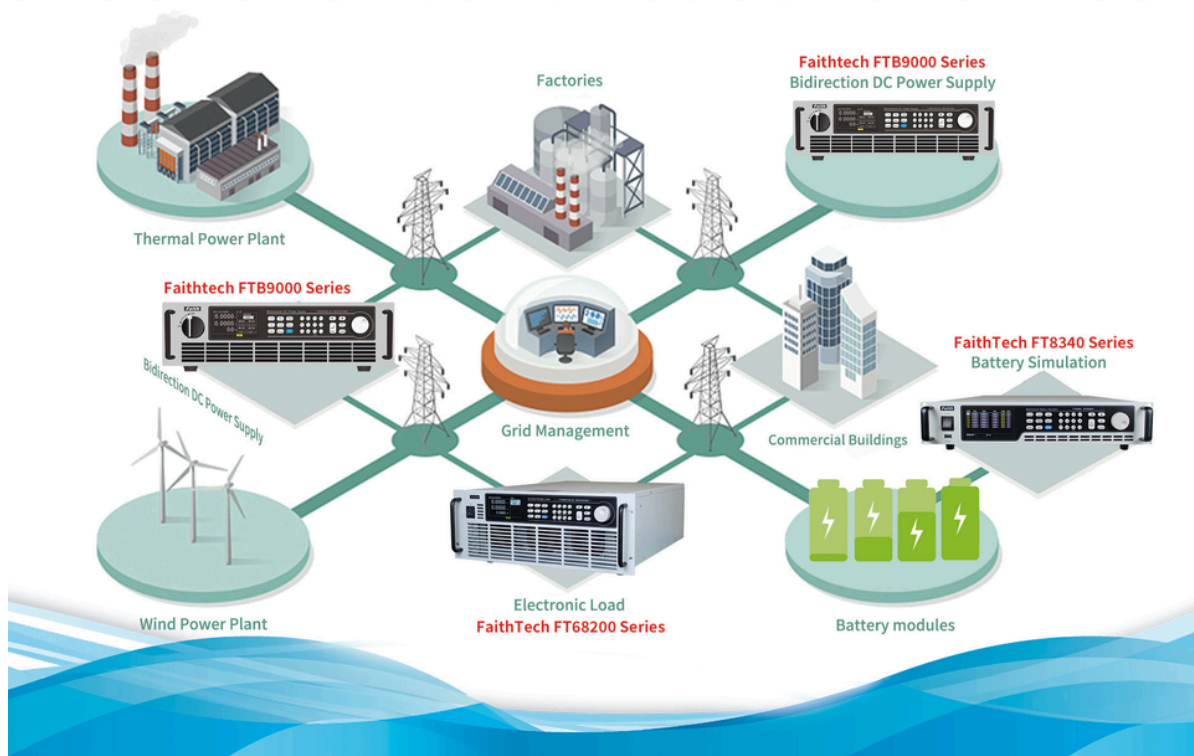
- Adopts modular power supply design, high power density, small size, light weight, is one tenth of the volume of traditional (transformer) power supply
- up to 900kVA, 1Hz - 550 Hz
- Current up to 1356 A
- Touch screen + knob operation, convenient parameter setting
- Provide PC upper computer operating software
- With RS232, RS485, CAN2.0B, LAN communication interface



FT-SCA/SCE SERIES

High Precision Current Sensor

- Current range: $\pm 60A/\pm 200A/\pm 600A/\pm 1000A/\pm 1500A/\pm 2000A/\pm 3000A$
- High precision, current precision 10ppm
- AC/DC universal, which can measure AC, DC and pulse current
- Primary and secondary side isolation measurement
- No warm-up time
- Wide band measurement,
- Low response time, minimum dynamic response time 1us



CHAPTER 1

BriPower™

AC/DC Power Source & Load

ZGX SERIES

AC/DC Power Source & Load

- Single-phase and selectable three-phase 208V, 230V, 380V, 400V (L-L) input
- AC, DC, and AC+DC output
- 4-Quadrant Operation
- Regenerative AC/DC source and load
- Regenerative RLC /RCD electronic load
- BiPolar DC power supply
- Single-phase/three-phase/split-phase/reversephase/ multichannel output, each phase independently controllable
- Up to 100th harmonic waveform generation
- Supports low/high voltage ride-through and continuous fault ride-through
- Programmable phase angle jump
- Current-limiting output for short-circuit testing
- TTL trigger signal output with voltage or frequency changes



KGS SERIES

SiC AC/DC Power Source & Load

- Modular design, output power from 15kVA to 1080kVA
- Bi-directional AC/DC power source, seamless transition between source and sink modes
- Regenerative AC/DC load function
- Output: AC, DC, AC+DC
- Independent three-phase output, which can be configured as single-phase output
- Max output 450V L-N within output frequency range from DC to 5kHz
- Frequency Range: DC~ 5kHz max Up to 100th harmonic waveform generation, inter-harmonic generation
- Trigger out, TL signal output for voltage or frequency change
- AC output, ON/ OFF output phase angle can be programmed
- Using true current feedback control when working in CC mode

CHAPTER 1



AC/DC Power Source & Load

ESA SERIES

High Power AC Power Supply

- Configurable output power, voltage, current, and frequency ranges
- Master-slave parallel operation for system expansion
- Programmable voltage/frequency sequences via GUI with controllable slew rates
- Optional DC output mode
- Built-in soft-start function to suppress inrush current
- Custom waveform output (clipped wave, rectified wave)
- Optional air-cooling or liquid-cooling configurations
- Grid simulator
- Regenerative electronic load RLC electronic load



ESD SERIES

DC Power Supply

- Configurable power, voltage and current ranges
- Maximum output power: 10 MW
- Maximum output voltage: 50 KV
- Master-slave parallel for power expansion
- Operating Modes: Constant Current (CC), Constant Voltage (CV), Constant Power (CP), and Constant Resistance (CR)
- Voltage and current sequences programmable via GUI
- Built-in soft-start function effectively suppresses in-rush current during startup
- Configurable as a bidirectional DC power supply (-R option), operating in two quadrants for new energy testing (e.g. battery simulation)
- Configurable for fast dynamic response: Current risetime (0%-90%) < 1 ms
- Configurable as an energy regenerative DC load function (-LD option)
- PV simulation (-PV option)

CHAPTER 2

YOKOGAWA 

Power Measurement



DLM5000 HD

Mixed Signal Oscilloscopes

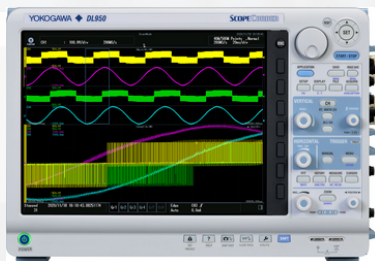
- 4 or 8 analog channels, 16-bit logic + optional additional 16-bit logic
- Bandwidth: 350 or 500 MHz
- Sample Rate: up to 2.5 GS/s
- Vertical resolution: 12 bit
- High resolution mode: up to 16 bit
- Measurement memory: up to 1 GigaPoints
- History waveforms: up to 200,000 triggers
- Synchronization function for up to 16 analog channels
- Logic and Serial Bus Analysis



DLM3000 HD

Mixed Signal Oscilloscopes

- 4 analog channels
- 8-bit logic
- Bandwidth: 350 or 500 MHz
- Sample Rate: up to 2.5 GS/s
- Vertical resolution: 12-bit
- High resolution mode: up to 16-bit
- Measurement memory: up to 1 GigaPoints
- History waveforms: up to 200,000 triggers
- Synchronization function for up to 8 analog channels
- Logic and Serial Bus Analysis



DL 950

Mixed Signal Oscilloscopes & Scope Coder

- 200 MS/s high-speed sample rate
- 8 G points large memory
- Long recording to internal flash memory at 20 MS/s
- 10 Gbps Ethernet high-speed data transfer
- Up to 16-bit analog resolution
- 8 input module slots
- Up to 160 synchronized channels
- A variety of isolated plug-in modules
- 12.1-inch large touch screen



DL 350

Mixed Signal Oscilloscopes & Scope Coder

- A4-sized compact chassis
- Battery power for 3.5 hours
- Resistive touch screen
- Memory recorder mode for easy data logging setup
- Compatible with 20+ different input modules
- Up to 8 channels analog inputs
- Up to 100 MS/s sampling rate/ Up to 16-bit analog resolution
- GPS recording: longitude, latitude, velocity, and more

CHAPTER 2

YOKOGAWA 

Power Measurement



WT 5000 SERIES

Power Analyzer

- Up to 7 wattmeters / Modular
- 0.01% of rdg + 0.02% of rng
- DC to 1MHz
- 4 motor inputs
- Harmonics testing to 500th order
- IEC 61000 compliance testing



WT 1800E/R SERIES

Power Analyzer

- Up to 6 wattmeters
- 0.05% of rdg + 0.05% of rng
- DC, 0.1Hz to 1MHz
- 2 motor inputs
- Harmonics to 500th order



WT 500 MID RANGE SERIES

Power Analyzer

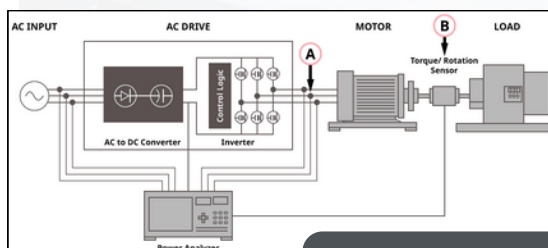
- Up to 3 wattmeters
- 0.1% of rdg + 0.1% of rng
- DC, 0.1Hz to 100kHz
- Independent range controls
- Harmonics to 50th order



WT 300-ECONOMY SERIES

Power Analyzer

- Up to 3 wattmeters
- 0.1% of rdg + 0.05% of rng
- DC, 0.1Hz to 100kHz
- Standby Power, Energy Star®, SPEC Power® and IEC62301/EN50564



The Measurement Challenge



CHAPTER 2

High-end Oscilloscopes



R&S®RTM3000 OSCILLOSCOPE

Low class digital Oscilloscopes

- Bandwidth: 100 MHz to 1GHz
- Sample rate: up to 5 Gsample/s
- Memory depth: up to 80 Msample
- ADC resolution: 10-bit
- Display: 10.1" capacitive touchscreen



R&S®MXO3 OSCILLOSCOPE

Low class digital Oscilloscopes

- Bandwidth: 100 MHz to 1 GHz
- Analog Channel: 4/8 Ch
- Sample rate: up to 5 Gsample/s
- Memory depth: up to 500 Mpts/ch
- 12-bit ADC and 18-bit
- HDDisplay: 11.6" capacitive touchscreen



R&S®MXO 4 OSCILLOSCOPE

Mid class digital Oscilloscopes

- Bandwidth: 200 MHz - 1.5 GHz
- World's first oscilloscope with an update rate > 4.5 million waveforms per second and industry leading spectrum acquisition rate of 45,000 FFT/s, with up to 4 spectra
- Industry-leading system architecture: 18-bit vertical resolution/12-bit ADC, 10-bit ENOB
- Zone trigger on analog, spectrum and math
- Deepest in class standard memory: 400 Mpoints



R&S®MXO 5 OSCILLOSCOPE

Mid class digital Oscilloscopes

- Bandwidth: 4 channel: 350 MHz - 2 GHz | 8 channel: 100 MHz - 2 GHz
- World's fastest oscilloscope with > 4.5 million wfms/s update rate and spectrum with > 45k FFT/s
- Industry-leading architecture: 18-bit vertical resolution/12-bit ADC and 10-bit ENOB
- Zone trigger on analog, spectrum and math
- Deepest in class standard memory: 500 Mpoints

**NEXT GENERATION OSCILLOSCOPE FOR
ACCELERATED INSIGHT**

CHAPTER 2

High-End Oscilloscopes

ROHDE & SCHWARZ
Make ideas real



R&S®MXO 5C OSCILLOSCOPE

High class Digital Oscilloscopes

- Bandwidth: 4 channel: 350 MHz - 2 GHz | 8 channel: 100 MHz - 2 GHz
- 2U height which makes it the ideal choice for rack applications
- Integrated e-ink display with key information such as instrument IP and status for fast setup
- Zone Trigger on analog, spectrum, and math
- Same great specs as MXO5 Series oscilloscope:
 - World's fastest oscilloscope: 4.5 million waveforms/sec
 - Industry-leading system architecture: 12-bit ADC, 18 bit HD mode and 10-bit ENOB
 - Deepest in class standard memory: 500 Mpoints
 - Industry leading spectrum acquisition rate of 45,000 FFT/s and up to 4 spectra



R&S®RT06 OSCILLOSCOPE

High class Digital Oscilloscopes

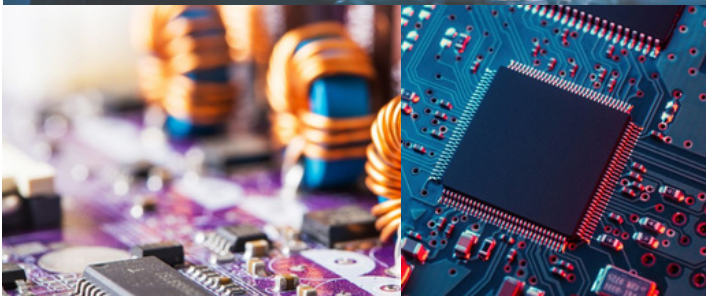
- 6 GHz maximum bandwidth
- 1 million waveforms per second
- 9.4 ENOB for ultimate signal integrity
- 2 Gpoints maximum memory
- Exclusive frequency zone trigger



R&S®RTP OSCILLOSCOPE

High class Digital Oscilloscopes

- Bandwidth: 4 GHz to 16 GHz
- Max. sample rate: 40 Gsample/s
- Max. memory depth: 3 Gpoints per channel
- Up to 16 bit resolution
- All trigger events at full bandwidth



CHAPTER 2

Probe Accessories

ROHDE & SCHWARZ
Make ideas real



PASSIVE PROBE

- Bandwidth: up to 700 MHz
- Dynamic range: up to 1000 V (RMS)



PASSIVE BROADBAND PROBES

- High bandwidth: 8 GHz
- Extremely low input capacitance: 0.3 pF



POWER RAIL PROBES

- High bandwidth: 2 GHz or 4 GHz
- High offset compensation range: ± 60 V
- High sensitivity with 1:1 attenuation ratio



ACTIVE DIFFERENTIAL PROBES

- Bandwidth: 200 MHz to 4.5 GHz
- Input impedance: up to 1 M Ω
- Low input capacitance: less than 1 pF



HIGH VOLTAGE PROBES

- Maximum voltage: up to 6000 V
- Bandwidth: up to 400 MHz
- Integrated high precision DC voltmeter (not available for all models)



CURRENT PROBES

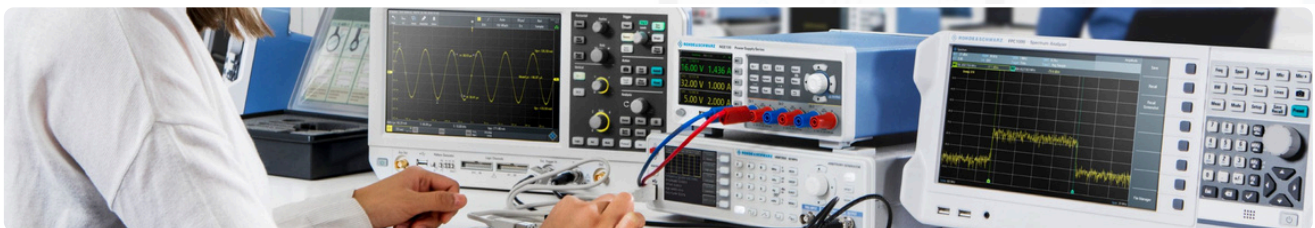
- Non-intrusive DC and AC measurements
- Current range from mA to 2000 A
- Up to 120 MHz bandwidth
- Robust design and easy operation



ISOLATED PROBES

Isolated probing system for SiC/GaN

- 100, 200, 350, 500 MHz and 1 GHz bandwidth, upgradeable
- > 90 dB CMRR at 1 GHz
- ± 3000 V differential input range and offset
- ± 60 kV common mode range
- Dual connectivity with a Rohde & Schwarz probe interface and SMA connector



CHAPTER 2

Oscilloscope - Benchtop



ADS3000A SERIES

12 bits Multifunction Digital Oscilloscope

- Bandwidth: 100 MHz to 500 MHz
- Sample Rate: 2.5 GS/s
- Vertical Resolution: 12-bits
- Channel: 2CH, 4CH
- Arb Waveform Generator: 50 MHz (2CH) - optional



ADS800A SERIES

12 bits Digital Oscilloscope

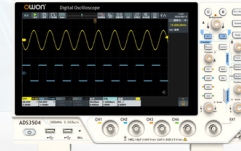
- Bandwidth: 70 MHz to 200 MHz
- Sample Rate: 1.25 GS/s
- Vertical Resolution: 12-bits
- Channel: 2CH, 4CH
- Max. Memory Depth: 50 Mpts
- Max. Waveform Capture Rate: 700,000 wfms/s



ADS900A SERIES

12 bits Digital Oscilloscope

- Bandwidth: 125 MHz / 250 MHz
- Sample Rate: 2 GS/s
- Vertical Resolution: 12-bits
- Channel: 2CH, 4CH
- Optional Signal Source: 30 MHz (1CH)
- Digital Channels: 16 Probe (optional)



ADS3000 SERIES

4th-Generations Digital Oscilloscope

- Bandwidth: 100MHz to 500 MHz
- Sample Rate: 2.5 GS/s
- Channel: 2CH, 4CH
- Arb Waveform Generator: 50 MHz (2CH) - optional



ADS200 SERIES

Digital Oscilloscope

- Bandwidth: 100 MHz / 150 MHz / 200 MHz
- Sample Rate: 1 GS/s
- Record Length: 20 Mpts
- Channel: 2CH



XDS4000 SERIES

Digital Oscilloscope

- Bandwidth: 350 MHz / 500 MHz
- Sample Rate: 5 GS/s
- Record Length: 400 Mpts
- Channel: 2CH, 4CH

CHAPTER 2

Oscilloscope - Portable



HDS300 SERIES

Digital Oscilloscope

- Bandwidth: 70 MHz to 200 MHz
- Sample Rate: 250 MS/s to 1 GS/s
- Multimeter: 4 ½ digits
- Signal Generator: Max. 30 MHz



HDS200 SERIES

Digital Oscilloscope

- Bandwidth: 25 MHz to 200 MHz
- Sample Rate: 250 MS/s to 1 GS/s
- Multimeter: 4 ½ digits
- Signal Generator: Max. 30 MHz



TAO3000 SERIES

Tablet Digital Oscilloscope

- Bandwidth: 70 MHz / 100 MHz / 120 MHz
- Sample Rate: 1 GS/s
- Vertical Resolution: 8/12/14-bits
- Record Length: 40 Mpts
- Channel: 2CH, 4CH



VDS6000 SERIES

PC Oscilloscope

- Bandwidth: 70 MHz / 100 MHz
- Sample Rate: 1 GS/s
- Vertical Resolution: 8/12/14-bits
- Record Length: 10 Mpts
- Channel: 2CH, 4CH



CP024 SERIES

AC/DC Current Probe

- Bandwidth: 200 KHz
- DC Range: 4 A to 400 A
- AC Range: 4 A to 400 A



OD5015/5070/5140 SERIES

Active High Voltage Differential Probe

- Bandwidth: 50 MHz / 100 MHz
- Max. input differential voltage: 1500V, 7000V, 14 kV
- Accuracy: $\pm 1\%$
- CMMR: -80 dB at 60 Hz, -50 dB at 100 Hz

CHAPTER 2

Spectrum and AFG



HSA1016/1036/1075 SERIES

Handheld Spectrum Analyzer

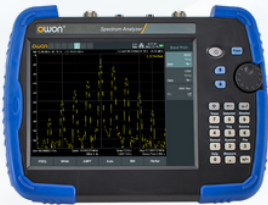
- Frequency Range: 9 kHz to 7.5 GHz
- RBW: 10 Hz to 3 MHz
- GPS: Included



HSA2000 SERIES

Multifunction Handheld Spectrum Analyzer

- Frequency Range: 9 kHz to 3 GHz
- Bandwidth: 50 MHz to 200 MHz
- Integrated: Oscilloscope, Multimeter



HSA015/032 SERIES

Handheld Spectrum Analyzer

- Frequency Range: 9 kHz to 3.2 GHz
- RBW: 10 Hz to 3 MHz



DGE 1000/3000 SERIES

Waveform Generator

- Frequency Output: 30 MHz / 60 MHz
- Sample Rate: 125 MS/s / 300 MS/s
- Arb Wave Length: 8k
- Vertical rate: 14 bits



XDG 2000/3000 SERIES

Waveform Generator

- Frequency Output: 30 MHz to 250 MHz
- Sample Rate: 500 MS/s, 1.25 GS/s
- Arb Wave Length: 1 Mpts / 10 Mpts
- extra feature (XDG3000): frequency counter; touch screen LCD



ORF5060 SERIES

Near Field Probe

- Frequency Range: 1 MHz to 6 GHz
- Resolution: 3 mm to 45 mm.
- Impedance: 50Ω
- Adapter: N to SMA

CHAPTER 2

Data Logger

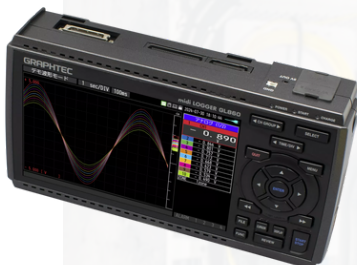
GRAPHTEC



GL7000 SERIES

Modular Data Acquisition Platform

- Channels: Up to 112 (with 10 modules)
- Sampling Speed: Max. 1 MS/s (High-speed module)
- Input Modules: Voltage, High Voltage, Temp/TC/RTD, Strain, Charge, Logic/Pulse, Analog Output
- Memory: 2M samples (RAM), 4 GB flash, SD card (32 GB), optional 128 GB SSD
- Interfaces: LAN (Ethernet), USB 2.0, Web/FTP/NTP support
- Sync: Up to 5 units synchronized
- Operation: PC-free with detachable 5.7" color touch display



GL860/840 SERIES

Multi-CH data LOGGER

- Channels: 20 to 200 (expandable)
- Sampling: 5 ms to 1 hour
- Measurements: Voltage (20 mV–100 V), Thermocouple, RTD, Humidity, 4–20 mA
- I/O: 4 logic/pulse inputs, 4 alarm outputs
- Memory: 8 GB internal flash + SD card (up to 32 GB)
- Display: 7" TFT color LCD (WVGA)
- Interfaces: USB, Ethernet, optional Wi-Fi
- Power: AC, DC, or dual battery packs



GL2000 SERIES

4 Channel Data Logger

- Channels: 4 isolated (CAT III 600 V, True RMS)
- Sampling Rate: Up to 1 MS/s, 16-bit resolution
- Memory: 4M samples/ch RAM, 8 GB internal flash, SD/USB external
- Display: 7" TFT LCD (waveform, XY, past trace, data views)
- Interfaces: USB, LAN, external storage support
- Printer: Compatible with DP-581H thermal printer



GL980 SERIES

8 Channel Data Logger

- Channels: 8 isolated analog inputs
- Sampling Rate: Up to 1 MS/s, 16-bit resolution
- Voltage Range: Up to ± 500 V, True RMS supported
- Memory: 4 M samples/ch RAM, ~4 GB internal flash, SD/USB external storage
- Display: 7" TFT LCD (WVGA 800×480)
- Interfaces: Ethernet (Web/FTP/NTP/Email), USB 2.0
- Power: AC, DC, or optional battery (~2 hours, auto switch-over)
- Printer: Supports DP-581H thermal printer

CHAPTER 2

GRAPHTEC

Data Logger



GL260/240 SERIES

Low-End Multi-channel Data Logger

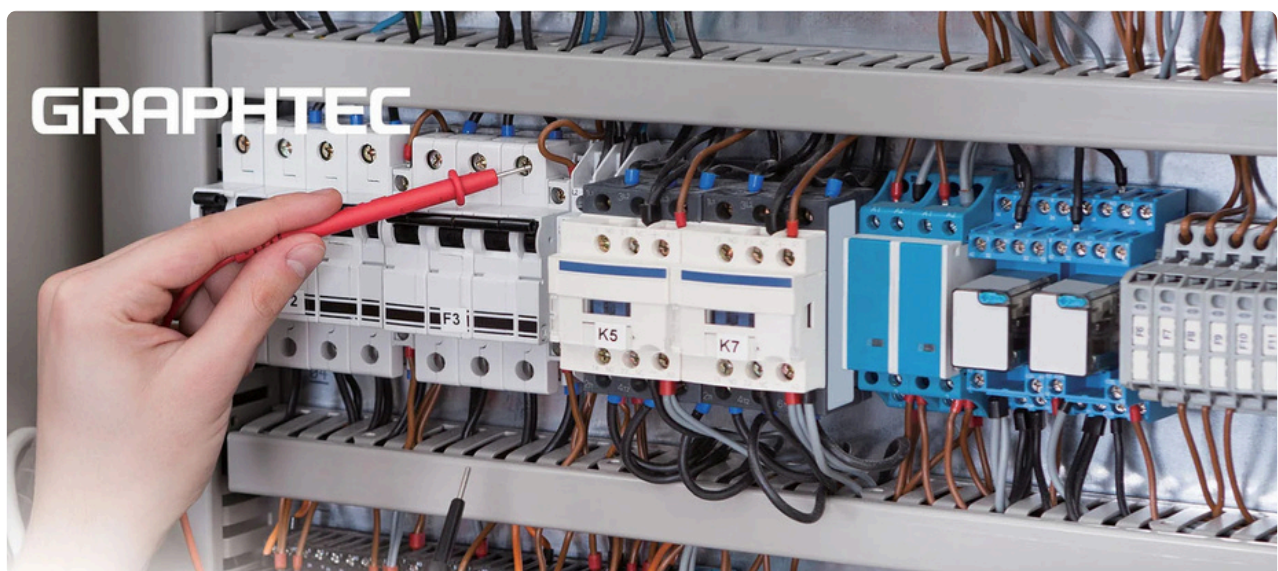
- Channels: 10 isolated analog inputs
- Sampling: 10 ms to 1 hour
- Measurements: Voltage (20 mV–100 V), Thermocouple, Humidity (optional)
- I/O: 4 logic/pulse inputs, 4 alarm outputs, 1 external trigger input
- Memory: 8 GB internal flash + SD card (up to 32 GB)
- Display: 4.3" TFT color LCD (480×272)
- Interfaces: USB 2.0, optional Wi-Fi (B-568) with cloud support
- Power: AC, DC (8.5–24 V), or optional battery pack



GL100 SERIES

Compact Data Logger

- Inputs: Modular sensor system (Temp/Humidity, Acceleration, Light/UV, CO₂, Voltage/TC, Thermistor)
- Memory: ~4.9 MB internal + micro-SD slot
- Display: 128×64 backlit LCD (real-time values, menus)
- Interfaces: USB (all models), Wi-Fi (GL100-WL version)
- Power: 2×AA batteries or USB bus power
- Size/Weight: 66 × 100 × 27 mm, ~125–130 g



CHAPTER 3

Spectrum Analyzer

KAROGIC

PXE SERIES

Spectrum Analyzer - Benchtop

- IEC IP68 certified
- MIL-STD-810H method-512.6/514.8/516.8 certified
- 2.5 kg lightweight, 10.1-inch multi touchscreen
- Frequency range: 9 kHz to 9.5/20/40 GHz
- 1 GHz DANL: -161 dBm/Hz
- 1 GHz phase noise: -100 dBc/Hz@10 kHz
- Analysis bandwidth: up to 100 MHz
- Operation Time: 4 Hours (typ.)



PXN-400 SERIES

Spectrum Analyzer - Benchtop

- 1.5 Kg Lightweight, 10.1-Inch Multi Touchscreen
- Frequency Range: 9 kHz to 40 GHz
- 1 GHz DANL: -161 dBm/Hz
- 1 GHz Phase Noise: -107 dBc/Hz@10 kHz
- Analysis Bandwidth: Up to 100 MHz
- Channel Power, Phase Noise and More (std.)
- 3 Hours Operation Time

PXZ EDITION

Spectrum Analyzer - Benchtop

- Windows11 operating system
- 12 kg lightweight, 8.8-inch multi touchscreen
- Frequency range: 9 kHz to 9.5/20 GHz
- 1 GHz DANL: -168 dBm/Hz
- 1 GHz phase noise: -100 dBc/Hz@10 kHz
- Analysis bandwidth: up to 100 MHz
- CPU: high performance AMD Z1 Extreme
- 16 GB RAM and 512 GB SSD



CHAPTER 3

HAROGIC

Spectrum Analyzer

NXN/NXM/NXE/NXN-400 SERIES

Spectrum Analyzer - Network

- Frequency Range: 9 kHz To 4.5/6.3/8.5/20/40 GHz
- 1 GHz DANL: -162 dBm/Hz
- 1 GHz Phase Noise: -110 dBc/Hz@10 kHz
- Analysis Bandwidth: Up to 25 MHz
- 1000M/100M Ethernet Interface
- Highly Compatible API Interface
- Linux and Windows Operating Systems Are Supported



SAN/SAM/SAE/SAN-400 SERIES

Spectrum Analyzer - USB

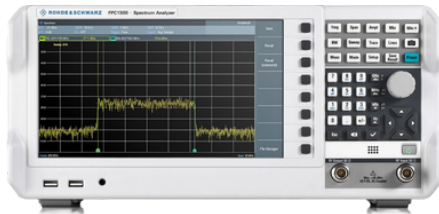
- Frequency Range: 9 kHz To 4.5/6.3/8.5/20/40 GHz
- 1 GHz DANL: -162 dBm/Hz
- 1 GHz Phase Noise: -110 dBc/Hz@10 kHz
- Analysis Bandwidth: Up to 25 MHz
- USB3.0/2.0 Type C Interface
- Highly Compatible API Interface
- ARM and X86 Processor Are Supported
- Linux and Windows Operating Systems Are Supported



CHAPTER 3

Spectrum & VNA Analyzer

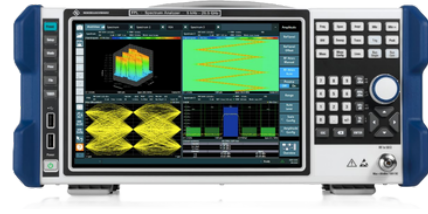
ROHDE & SCHWARZ
Make ideas real



R&S®FPC SPECTRUM ANALYZER

Low class Spectrum Analyzer - Benchtop

- RF performance engineered in Germany
- 10.1" WXGA (1366 × 768 pixel) display – largest and highest resolution in class
- Tracking generator and independent CW signal generator
- Built-in VSWR bridge
- One port vector network analyzer with Smith chart display



FPL SPECTRUM ANALYZER

Mid class Spectrum Analyzer - Benchtop

- Frequency range 5 kHz to 26.5 GHz
- SSB phase noise: typ. -108 dBc (1 Hz) at 10 kHz
- DANL with preamplifier: typ. -163 dBm from 10 MHz to 2 GHz
- Lightweight with small footprint
- 40 MHz analysis bandwidth (option)



R&S®FSV3000 SIGNAL AND SPECTRUM ANALYZER

High class Spectrum Analyzer - Benchtop

- Frequency range from 10 Hz to 4, 7.5, 13.6, 30, 44, 50 GHz
- Analysis bandwidth up to 200 MHz
- SSB phase noise at 10 kHz offset (1 GHz): -114 dBc/Hz
- GUI with multi-touch, SCPI recorder and event based actions
- Options for analog and digital signal analysis, including 5G NR



FSW SIGNAL AND SPECTRUM ANALYZER

High class Spectrum Analyzer - Benchtop

- Frequency range from 2 Hz to 8, 13.6, 26.5, 43.5, 50, 67, 85 GHz
- Unparalleled low phase noise and best sensitivity on the market
- 8.3 GHz internal analysis bandwidth
- 800 MHz real-time analysis bandwidth
- SCPI recorder simplifies code generation
- High dynamic range enables outstanding EVM performance

CHAPTER 3

Spectrum & VNA Analyzer

ROHDE & SCHWARZ
Make ideas real



FSWX SIGNAL AND SPECTRUM ANALYZER

High class Spectrum Analyzer - Benchtop

- Frequency range 26.5/44 GHz
- Multichannel signal analysis
- Novel internal multipath architecture with cross-correlation
- Preselected I/Q analysis in the microwave range
- 8 GHz internal analysis bandwidth
- Highest level accuracy over the full frequency range



R&S®FPS SIGNAL AND SPECTRUM ANALYZER

High class Spectrum Analyzer - Low Profile

- Frequency range up to 4/7/13.6/30/40 GHz
- Up to 160 MHz signal analysis bandwidth
- 0.4 dB level measurement uncertainty up to 7 GHz
- Measurement applications for GSM/EDGE (including EDGE Evolution), WCDMA/HSPA+, LTE, 5G, WLAN, vector signal analysis



R&S®ZNB VECTOR NETWORK ANALYZER

High class VNA - Benchtop

- Frequency range from 9 kHz to 43.5 GHz
- Two or four ports
- Wide dynamic range of up to 140 dB
- Short sweep times of 4 ms for 401 points
- Wide power sweep range of 98 dB



R&S®ZNH HANDHELD VECTOR NETWORK ANALYZER

High class VNA - Portable

- Frequency range from 30 kHz to 4/8/18/26.5 GHz
- One-port cable and antenna measurement with basic instrument
- S-parameter (S_{11} , S_{12} , S_{21} , S_{22}) measurement with basic instrument
- 100 dB (typ.) dynamic range for filter and antenna isolation measurements
- Non-reflective display, small form factor, ruggedized housing (IP51)

CHAPTER 3

ROHDE & SCHWARZ
Make ideas real



Spectrum & VNA Analyzer



R&S®ZNA VECTOR NETWORK ANALYZERS

High class VNA - Benchtop

- 10 MHz to 26.5/43.5/50/67 GHz (R&S®ZNA26/43/50/67) 10 MHz to 110 GHz (R&S®ZNA67EXT)
- Two or four port models available
- Excellent RF-performance
- Up to four integrated sources
- Unique and intuitive touch-only operation



R&S®SMA100B RF AND MICROWAVE SIGNAL GENERATOR

Signal Generator

- Frequency range: 8 kHz to 3, 6, 12.75, 20, 31.8, 40, 50 and 67 GHz (overrange up to 72 GHz). Frequency extension from 50 GHz to 170 GHz with the R&S®SZM frequency multiplier
- SSB phase noise of -132 dBc (typ.) at 10 GHz and 10 kHz offset
- Wideband noise of -162 dBc (meas.) at 10 GHz and 30 MHz offset
- Maximum output power exceeds 30 dBm across wide frequency ranges
- Diverse functions such as user correction, closed loop power control and high dynamic uninterrupted level sweep. For more details please see "features and benefits" and the videos below



R&S®SMW200A VECTOR SIGNAL GENERATOR

Vector Signal Generator

- Frequency range up to 67 GHz (dual path: up to 44 GHz)
- 2 GHz modulation bandwidth
- Integrated fading with up to 800 MHz bandwidth and up to 8x8 MIMO
- Excellent signal quality for high accuracy in spectral and modulation measurements
- Advanced GNSS and radar simulator



R&S®SMCV100B VECTOR SIGNAL GENERATOR

Vector Signal Generator

- Multi-standard platform for broadcast, navigation, cellular and wireless applications
- Full software option defined vector signal generator with 5" touchscreen
- Modern RF signal generation concept from 4 kHz up to 7.125 GHz
- High output power up to +25 dBm
- Modulation bandwidth up to 240 MHz

CHAPTER 3

DC Power Source

ROHDE & SCHWARZ
Make ideas real



R&S®NGP800 POWER SUPPLY SERIES

High class DC Power Supplies

- Max. output power: 800 W
- Max. voltage per channel: 32 V or 64 V
- Max. current per channel: 10 A or 20 A
- Up to 250 V or 80 A in series or parallel operation
- Intuitive, price-transparent online product configurator



R&S®LCX LCR METER

High class LCR meter

- Frequency range upgradeable to 10 MHz
- Basic accuracy of $\pm 0.05\%$ for impedance measurements
- Basic accuracy of $\pm 0.03^\circ$ for phase measurements
- DC bias up to 40 V
- Data logging function



R&S®NPA POWER ANALYZER

High class Power Analyzer

- Power measurement range: 50 μ W to 12 kW
- Frequency bandwidth: DC to 100 kHz
- Sampling rate: 500 ksamples/s
- Supports three switchable crest factors
- Latest Rohde & Schwarz design featuring in-device graphical analysis and compliance evaluation



R&S®NGU SOURCE MEASURE UNITS

High class Source Measurement Unit

- Two/four quadrants: operates as source and sink
- High speed data acquisition (FastLog function)
- Voltage priority and current priority mode
- High-capacitance mode
- Intuitive, price-transparent online product configurator

CHAPTER 4

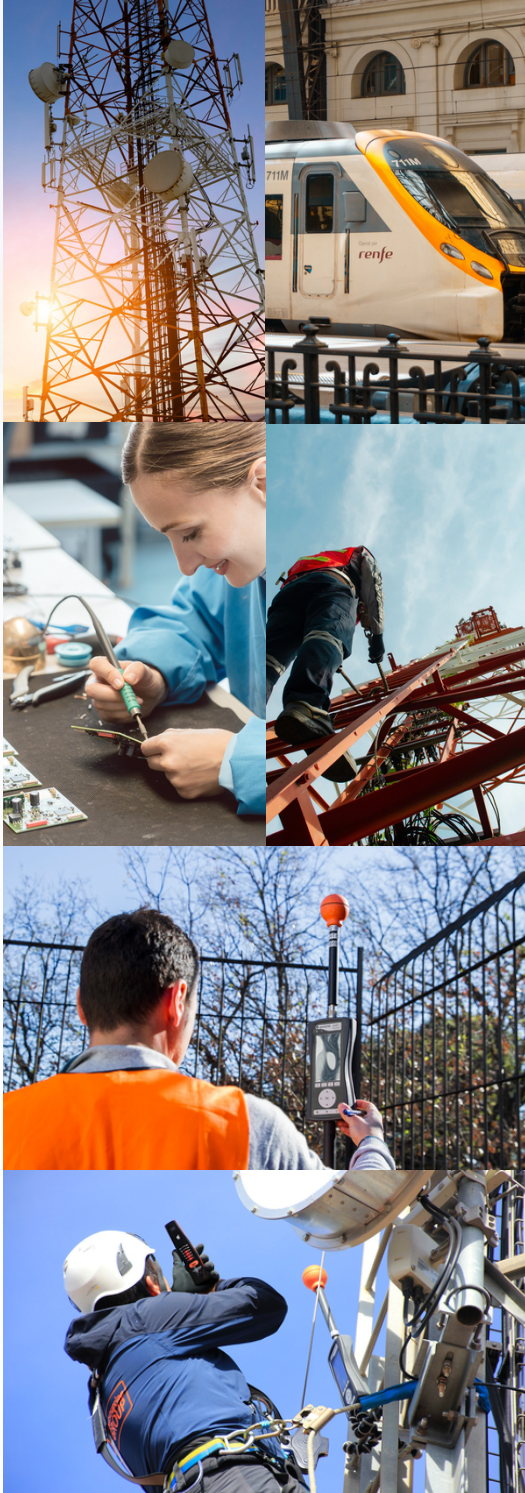
EMC/EMF Solution

WAVECONTROL
Safety, Quality, Service

FIELD STRENGTH METER: SMP3

Portable and flexible solution to measure electromagnetic fields

- EMF Exposure : Verify that people's EMF exposure is safe according to worldwide standards
- Product certification: measure that radiated emissions are below specified limits
- Real-time comparison in % with the selected limits up to 10 MHz
- Isotropic and high accuracy probes;
- Electric and Magnetic field
- Probe auto-detect capability
- EU Directive 2013/35, ICNIRP, IEC, EN, IEEE, SC6, etc



CHAPTER 4

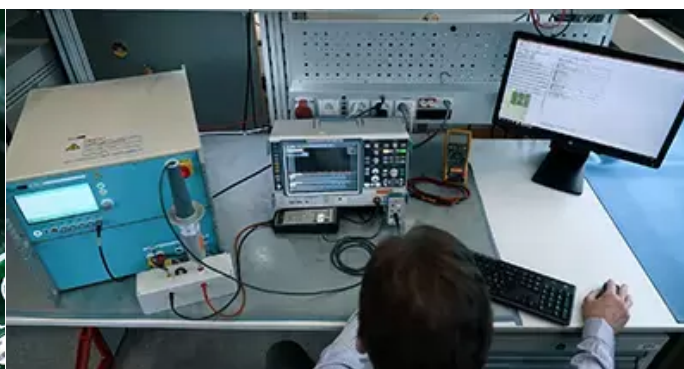
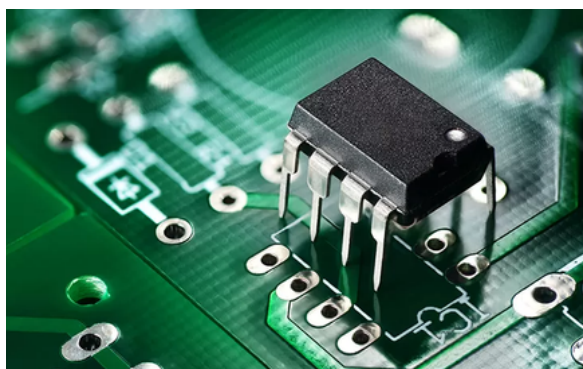


EMC/EMF Solutions

EMC TEST EQUIPMENT PER STANDARD

Applications

- Transient Test System/ CE
- ESD / EFT / Burst / Surge / Ringwave / DOW/ Magnetic Field Test / Common Mode Testing / Differential Mode Testing / AC / DC dip, Variation & Interrupts
- Capacitor Testing / SPD / GDT
- Power Induction / Power Contact / Lightning Voltage/ Current - Telecom
- Insulation Testing
- Aerospace Testing - Voltage Spike
- Defence Electronic - MIL-461 CS115, CS116, CS06 & CS106 Testing



CHAPTER 4

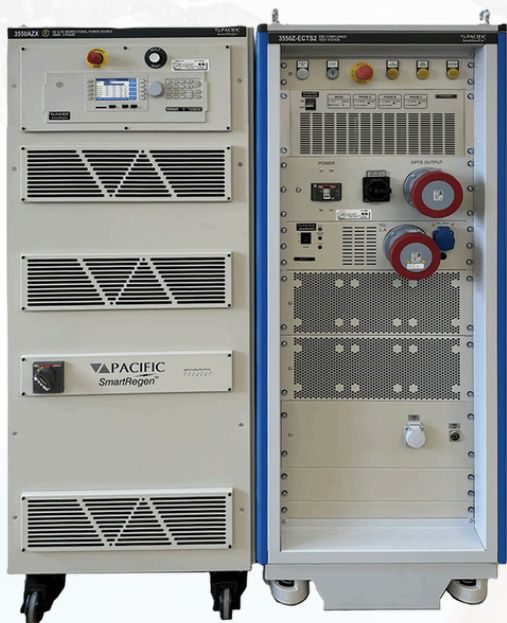
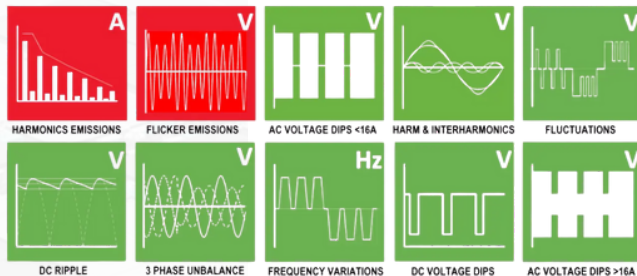


EMC/EMF Solutions

INDUSTRY AC & DC TEST SOLUTION

Applications

- EMC Compliance Test Systems
- Military & Defense Test Solutions
- Satellite, Radar & Electronic Warfare Test Solutions
- Renewable Energy Test Solutions for Grid-Tied Inverter and ESS



Pre-Written Test Standards Sequences

The screenshot displays the SAP S/4HANA Fiori 'Manage Material' app interface. The top navigation bar includes the SAP logo and the title 'Manage Material'. Below this, a breadcrumb trail shows the path: 'Home > Material > Manage Material > Classification > Data'. The main content area is divided into several sections. The 'General Data' section shows the material number '1000000000' and its description 'Material 1000000000'. The 'Basic Data' section displays the material's classification, including 'Material Group' and 'Material Type'. The 'Material Data' section is currently active, showing details for the material's classification, units of measure, and other technical specifications. The interface is clean and modern, with a blue header and a white background.



CHAPTER 4

EMC/EMF Solutions

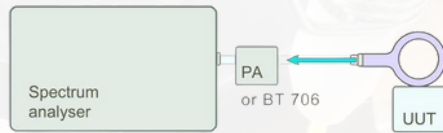
LANGER
EMV-Technik

EMC PRE-COMPLIANCE

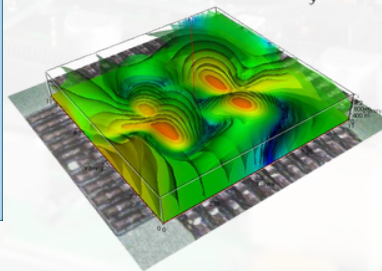
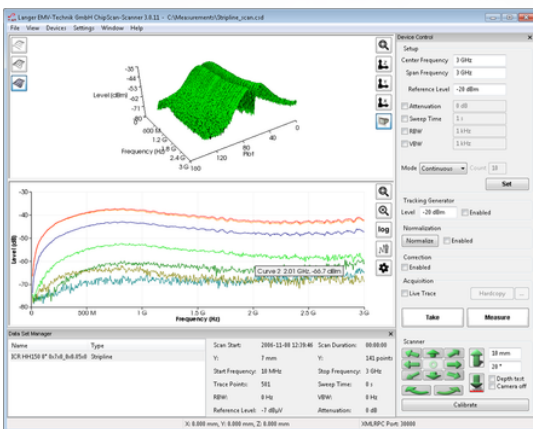
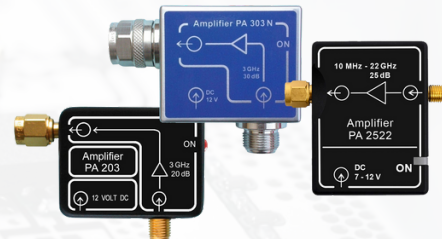
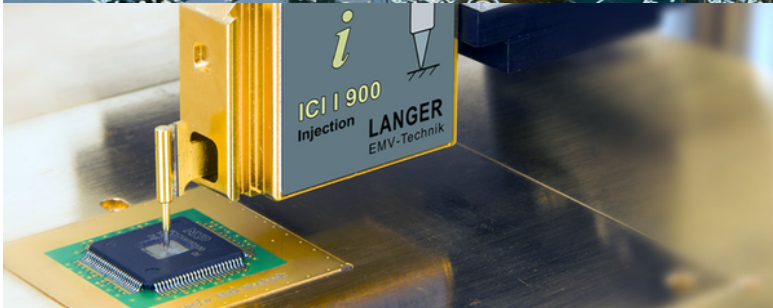
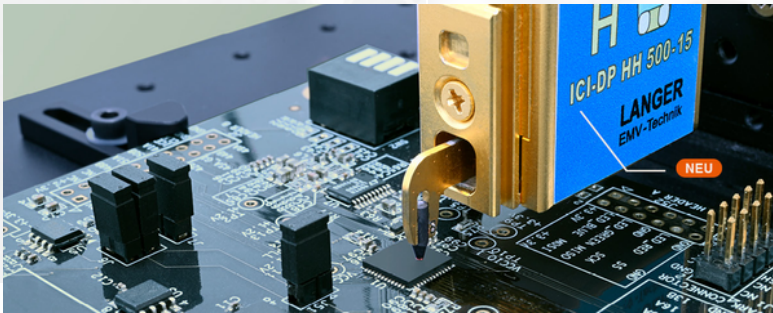
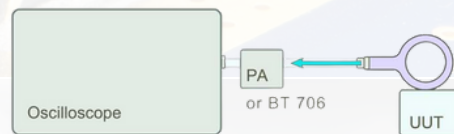
Applications

- PCB Immunity
- PCB Emission
- IC Test System
- IC Security
- Positioning System
- Measurement and Calibration Stations

H field measurement: MFA, XF, RF, LF probes



H field measurement: MFA, XF, RF, LF probes



CHAPTER 5

Partner®

Environment Test Chamber

PARTNER CHAMBER

High and Low Temp. Chamber

- High and Low Temperature Chamber
- Temperature and Humidity Chamber
- Ess Test Chamber
- Thermal Shock Test Chamber (Air/Water Cooling)
- Horizontal Thermal Shock Test Chamber
- Combined Climate Chamber
- Walk-in Climate Chamber
- Thermal Strain Instrument
- Benchtop Test Chamber
- High Temperature Test Chamber
- Heat Aging Oven
- Insert Gas Oven
- Clean Oven (Stacked)
- Ice Water Thermal Shock Chamber
- CAC Duct Pvt Test Bench
- Battery Test Chamber
- Automotive Motor Test Chamber





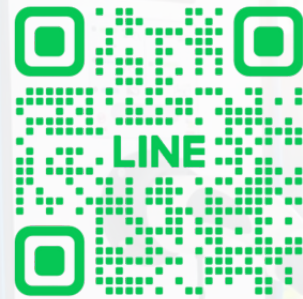
Contact

SANTRATEK SOLUTION CO., LTD
45/6 Moo 5 Khlong Hok, Khlong Luang
Pathum Thani 12120

sales@santratek-solution.com

Telephone: 063-817-5264

Website: www.santratek.com



@ Line official

