

Save time and money!
Easy 9mL diluent that does not require the manufacture of cumbersome diluent



Perfect Lock

Create an outside guard that will solve the worry that your hands will touch when you open and close the lid! You can **open smoothly** and close completely without slipping.



Wide Open Capability

For the first time in the industry, the lid is **opened up to 160 degrees** to prevent cross-contamination with minimal operation.



Easy Labeling

Multi-space notes on top of lid, front and back of body are available.



Container Transparency

Differentiated tube material allows **clear sample identification** during the experiment.



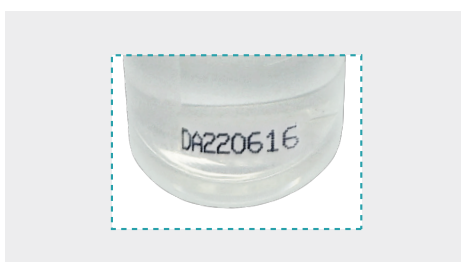
Individual Management

We paid more attention to quality control by registering **item manufacturing number** of each diluent.



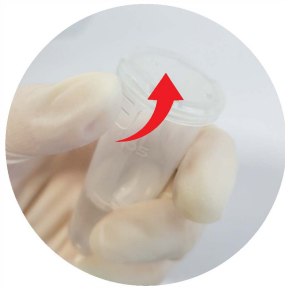
Compact Storage

20 in a set with excellent spatial layout! Storage takes up **20% less space** than other companies, so laboratory space can be used efficiently.



Simple Diluent

✓ How to use



1 Hold the diluent container in one hand and **push up the outside guard smoothly at once** with your thumb.



2 Take 1 ml of the sample with the other hand and put it in a diluent container.



3 Hold the lid and close the container. Confirm that it is completely closed by a **"click"** sound.

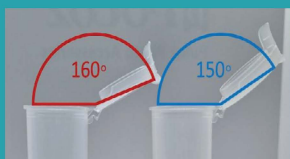


4 Proceed with sample handling while clearly checking the sample through a **transparent container**.



5 Check the **item manufacturing number** registered at the bottom of the diluent and finish the experiment with confidence!

✓ Lid opening angle and breakage test results



The industry's first lid container to open up to 160 degrees!

The patent technology of **Sanigen's Institute of Technology** has further improved the accuracy and convenience of the experiment.

It reduces the probability of breakage by approximately 60% compared to its competitors and demonstrates superior durability and safety.

✓ Product Information



Simple Diluent

Stock No.	Volume	Unit	Outside Guard	Buffer	Package	Box
FL009	9mL	3.3cm*7cm	○	0.85% Saline	20ea/pk (18.5cm*11cm)	12pk/box