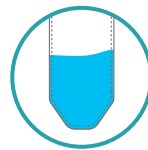


Easy sampling collection tool for collecting,
storing and transferring
Differentiated Swab Materials & Excellent Virus Recovery



Swab Material

Polyurethane material differentiated from cotton and nylon material



PBS Buffer

- Utilize pH 7.01 Phosphate buffered saline
- 10mL of sterilized buffer included



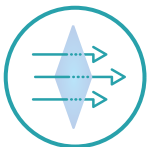
Swab Area

Easy to collect sample with large swab area



Conical Tube

- Flexible material made of LDPE material
- Easy to squeeze the absorbed buffer



Sterilized Product

- Use gamma ray sterilizing technology
- Internationally authorized sterilization technology



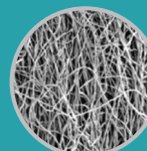
Swab specification

- Swab head(mm)
19.7(Width) x 26.4(Length) x 9.4(Thickness)
- Swab handle(mm)
6.6(Width) x 100.5(Length) x 3.2(Thickness)

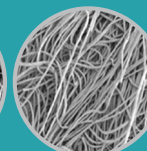
✓ Results of microscopic observation

This Sani-MacroSwab with polyurethane material has open type structure compared with other swab materials, so has excellent hygroscopicity and bacterial recovery rate.

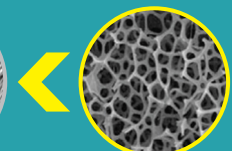
Source: US CDC (Laura Rose et al)



Cotton



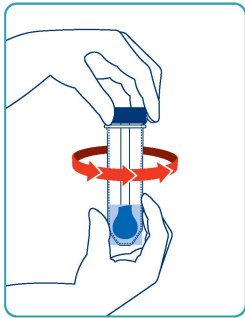
Nylon



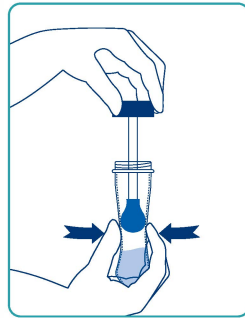
Polyurethane

MacroSwab

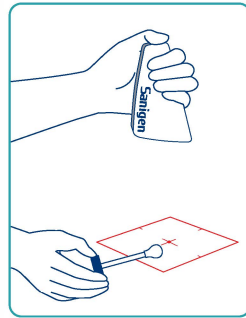
✓ How to use



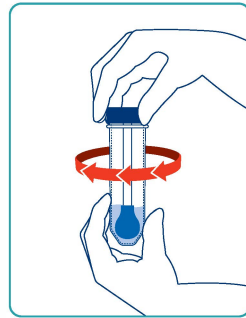
1 Turn a cap counterclockwise to open



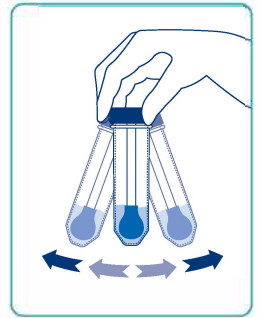
2 Remove swab head from buffer and press the tube to squeeze a swab head



3 Samples need to be taken using a swab (Compartment tools: Beam Template)



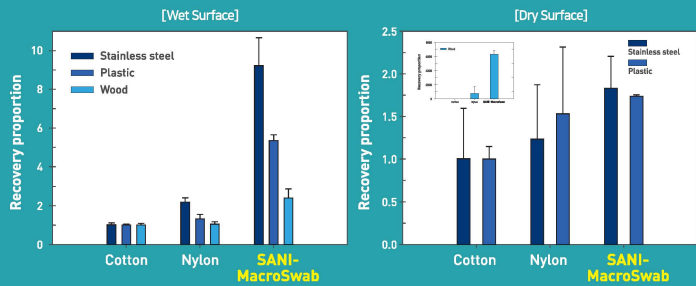
4 Insert the swab head into the tube and turn the cap clockwise to close



5 Shake the tube gently.

✓ Evaluation results of recovery rate using microorganisms

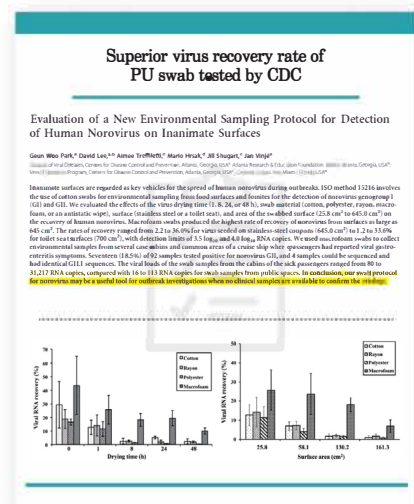
- Sani-MacroSwab with **polyurethane material** showed the highest recovery rate compared with A company (cotton) and B company (nylon).
- It also showed the highest recovery rate regardless of the dry / wet surface and various surfaces such as stainless steel, plastic and wood.



✓ SANI-MacroSwab Reference

Sani-MacroSwab, **excellent in virus recovery**, is actively used by domestic and foreign authorized institutions such as **Centers for Disease Control and Prevention (CDC)**.

- [United States] Centers for Disease Control and Prevention (CDC) under the Ministry of Health and Welfare
Department of Viral Disease Prevention, Medical Quality Promotion, Vaccination and Respiratory Disease Center, and Department of Pathology for High-Risk Pathogens
- [United States] Yale University - Yale University, Department of Microbial Pathology Research
- [United States] Lawrence National Laboratory, National Institute for Nuclear Weapons Development
- [United States] Battle, a non-profit applied technology development company
- [National] National Academy of Agricultural Science



✓ Product Information



SANI-MacroSwab

Stock No.	Volume	Buffer	Swab material	Swab head	Box(package)
SANI-M	10mL	PBS	Polyurethane	19.7mmx26.4mm	8ea/box
SANI-M (minorization)	10mL	PBS	Polyurethane	11.9mmx22.8mm	10ea/box