

31

MIXING & SHAKING



MINI VORTEX MIXER



Features:

- Touch function
- Fixed speed of 5600rpm
- Orbital diameter of 6mm
- Excellent mixing capability can be guaranteed
- USB interface is available for charging mobile devices
- Built-in light indication varies with the battery level and the working status
- 1600mAh Built-in lithium battery can operate the mixer for around 2 hours



SPECIFICATIONS:

Model	VM112
Type of movement	Orbital
Orbital diameter[mm]	6
Speed [rpm]	5600
Chargable	Yes
USB interface	Yes
Battery capacity [mAh]	1600
Battery operating time [Hour]	2
Voltage [VAC]	100-240
Frequency [Hz]	50/60
Output voltage [VDC]	15
Output power W]	9
Permissible ambient temperature [°C]	5-40
Permissible relative humidity	80%
Protection class acc. to DIN EN60529	IP41
Dimension [L x W x H,mm]	168x150x85
Weight [kg]	1

MINI VORTEX MIXER

Features:

- Touch function
- Fixed speed of 3000rpm
- Orbital diameter of 6mm
- Excellent mixing capability; can mix full 50ml containers within 5 seconds
- Patented foot pad design can hold the vortex mixer firmly in place when mixing
- Low operation voltage (12V) for full protection
- Power supply is CE, cULus, CCC, SAA and FCC certified

SPECIFICATIONS:

Model	MI0101001
Rated voltage [VAC]	100-240
Rated frequency [Hz]	50-60
Output voltage [VDC]	12
Output power [W]	7.2
Speed [rpm]	3000
Operating time [%]	100
Protection class	II
Pollution degree	2
Overvoltage category	II
EN 60529 protection Class	IP42
Ambient humidity (Relative) [%]	80
Ambient temperature [°C]	5-40 (in the operation)
Transport temperature [°C]	-25 to +70
Storage temperature [°C]	-10 to +70
Weight [kg]	0.55
Test tube size [mm]	Φ30
Dimensions: (Φ x H) [mm]	100 x 78
Type of movement	Orbital
Orbital diameter [mm]	6
Touch function	Yes

VORTEX MIXER

Features:

- Excellent mixing capability can make full 50ml containers mix within 3 seconds
- Perfect dynamic balance design can eliminate any movement in mixing
- Various applications with different interchangeable attachments
- Brushless DC motor and sturdy iron/aluminum casting base
- Power supply is CE, cULus, CCC, SAA and FCC certified
- Low operation voltage (12V) for full protection
- Wide speed range of 0-3000rpm
- Orbital diameter of 6mm



- Touch mode and continuous mode are available



- LED display for easy reading of time and speed
- Touch mode, timer mode and continuous mode are available

SPECIFICATIONS:

Model	MI0101002D	MI0101002
Operation mode	Continuous / touch operation	Continuous / touch operation
Type of movement	Orbital	Orbital
Orbital diameter	6 mm	6mm
Speed range	0-3000 rpm	0-3000rpm
Speed display	LED	Scale
Permissible ambient temperature	5-40°C	5-40°C
Permissible relative humidity	80%	80%
Protection class according to DIN EN 60529	IP21	IP21
Voltage [VAC]	200-240/115/100V compatible	200-240/115/100V compatible
Power [W]	36	36
Frequency [Hz]	50-60	50/60
Motor rating input [W]	30	30
Motor rating output [W]	15	15
Dimensions (W x H x D)	107x146x166	107x146x166mm
Weight [kg]	3	3

APPLICATION OF ACCESSORIES

ACCESSORY	ADJUSTABLE SPEED MODEL 400-3000RPM			
	TOUCH MODE		CONTINUOUS MODE	
	HIGH SPEED	LOW SPEED	HIGH SPEED	LOW SPEED
MI0101002-13	Y	Y	Y	Y
MI0101002-31+ MI0101002-14		Y		Y
MI0101002-32+ MI0101002-14		Y		Y
MI0101002-33+ MI0101002-14		Y		Y
MI0101002-34+ MI0101002-14		Y		Y
MI0101002-35+ MI0101002-14		Y		Y
MI0101002-36+ MI0101002-14+		Y		Y

ACCESSORIES



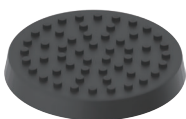
MI0101002-13
Standard top



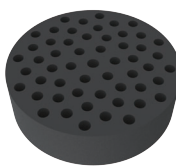
MI0101002-14
Universal top plate



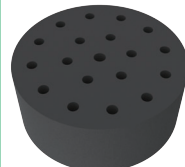
MI0101002-37
Erlenmeyer flask
attachment 100-250ml,
used with MI0101002-14



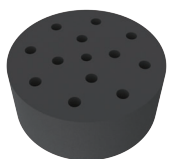
MI0101002-38
Platform pad
for $\Phi 99\text{mm}$
tubes and small vessels



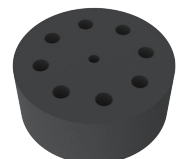
MI0101002-31
Test Tube Attachment,
 $54 \times \Phi 6\text{mm}$,
used with MI0101002-14



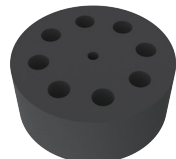
MI0101002-32
Test Tube Attachment,
 $18 \times \Phi 10\text{mm}$,
used with MI0101002-14



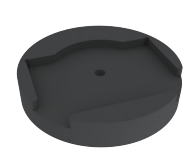
MI0101002-33
Test Tube Attachment,
 $12 \times \Phi 12\text{mm}$,
used with MI0101002-14



MI0101002-34
Test Tube Attachment,
 $8 \times \Phi 16\text{mm}$,
used with MI0101002-14



MI0101002-35
Test Tube Attachment,
 $8 \times \Phi 20\text{mm}$,
used with MI0101002-14



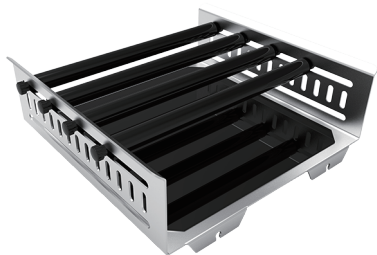
MI0101002-36
Microtiter plate
attachment,
used with MI0101002-14

ORBITAL AND LINEAR SHAKER



Features:

- Max. load capacity (with platform) is 7.5kg
- A wide choice of platforms for various applications
- Over-load and over-speed detection and protection
- LED display for easy-reading of speed and time simultaneously
- Fashion design of high strength tempered glass on the front panel
- Automatic alarm by time controller allows for unsupervised operation
- Brushless DC motor is maintenance-free and provides long service life
- Continuous operation and timing operation in range of 0- 99h59min are available
- Supports both orbital shaking and linear shaking and easy to switch the shaking mode
- Digital speed control system and micro-computer control make stable running and prevent sample splashing



MI0103002-101
Universal attachment with 4 bars



MI0103002-102
Fixing clip attachment for 100mL flasks

SPECIFICATIONS:

Model	MI0103002
Shaking motion	Orbital / Linear
Motor type	Brushless DC motor
Max. load capacity(with platform) [kg]	7.5
Orbital diameter [mm]	10
Speed display	LED
Speed range [rpm]	20-500
Time display	LED
Time range	0-99h59min
Operation type	Continuous / timing operation
Permissible ambient temperature [°C]	5-40
Permissible relative humidity	80%
Protection class acc. to DIN EN60529	IP21
Voltage [VAC]	100-240
Frequency [Hz]	50/60
Power [W]	40
Dimensions [W x D x H, mm]	450 x 400 x 105
Weight [kg]	APPROX 11

NEW+

Features:

- 3D shaking with an angle of 9°
- Max. load capacity (with platform) is 5kg
- A wide choice of platforms for various applications
- Non-slip mat in the platform can fix the sample effectively
- LED display for easy-reading of speed and time simultaneously
- Automatic alarm by time controller allows for unsupervised operation
- Continuous operation and timing operation in range of 0-99h59min are available.

SPECIFICATIONS:

Model	SK208
Shaking motion	Three - dimensional shaking
Tilt angle	9°
Max. load capacity(with platform) [kg]	5
Motor	Brushless DC motor
Speed range [rpm]	10-70
Speed display	LED
Time display	LED
Time range	0-99h59min
Operation type	Continuous / timing operation
Voltage [VAC]	100-240
Frequency [Hz]	50/60
Power [W]	35
Permissible ambient temperature [°C]	5-40
Permissible relative humidity	80%
Protection class acc. to DIN EN60529	IP21
Dimension [L x W x H,mm]	452 x 407 x 195
Weight [kg]	12

ROCKING SHAKER

NEW+



Features:

- Rocking shaker with an angle of 9°
- Max. load capacity (with platform) is up to 10kg
- Brushless DC motor is durable and maintenance-free
- LED display for easy-reading of speed and time simultaneously
- Continuous operation and Timed operation in range of 0-99h59min are available
- Anti-slip rubber mat in the platform can hold the sample containers effectively and prevent slipping
- Wide range of platforms can be used for petri dishes, flasks, culture flasks and tubes

SPECIFICATIONS:

Model	SK308
Tilt Angle	9°
Max. load capacity (with platform) [kg]	10
Speed range [rpm]	10-70
Motor type	Brushless DC motor
Speed display	LED
Timer	YES
Time display	LED
Time range [min]	1min-99h59min
Operation type	Continuous / timing operation
Dimensions [DxWxH, mm]	452x407x153
Weight [kg]	9.7
Permissible ambient temperature [°C]	5-40
Voltage [VAC]	100-240
Frequency [Hz]	50/60
Power [W]	40
Permissible relative humidity [%]	80
Protection class acc. to DIN EN 60529	IP21