

MIX-N-STAIN™ ANTIBODY LABELING KIT WITH CF™ DYES

Mix-n-Stain™ Antibody Labeling Kit with CF™ Dyes

Features:

- Brighter than Alexa Fluor® dyes
- Superior water-soluble CF™ dyes
- No calculating necessary
- Optimal labeling always produced
- Quick & simple protocol
- Variety of wavelengths available

CF™ 350 Dye

CF™ 405S Dye

CF™ 405M Dye

CF™ 488A Dye

CF™ 514 Dye

CF™ 532 Dye

CF™ 543 Dye

CF™ 555 Dye

CF™ 568 Dye

CF™ 594 Dye

CF™ 620R Dye

CF™ 633 Dye

CF™ 640R Dye

CF™ 647 Dye

CF™ 660C and CF™ 660R Dyes

CF™ 680 and CF™ 680R Dyes

For kit components, refer to the individual product pages online.

AP Antibody Labeling Kit

A-825-50	25-50 µg labeling
A-825-100	50-100 µg labeling

Biotin Antibody Labeling Kit

B-825-20	5-20 µg labeling
B-825-50	20-50 µg labeling
B-825-100	50-100 µg labeling

FITC Antibody Labeling Kit

F-825-20	5-20 µg labeling
F-825-50	20-50 µg labeling
F-825-100	50-100 µg labeling

Glucose Oxidase (GOX) Antibody Labeling Kit

G-825-50	25-50 µg labeling
G-825-100	50-100 µg labeling

HRP Antibody Labeling Kit

H-825-20	10-20 µg labeling
H-825-50	20-50 µg labeling
H-825-100	50-100 µg labeling

CF405L Antibody Labeling Kit

CF-405L-20	5-20 µg labeling
CF-405L-50	20-50 µg labeling
CF-405L-100	50-100 µg labeling

CF488A Antibody Labeling Kit

CF-488A-20	5-20 µg labeling
CF-488A-50	20-50 µg labeling
CF-488A-100	50-100 µg labeling

CF514 Antibody Labeling Kit

CF-514-20	5-20 µg labeling
CF-514-50	20-50 µg labeling
CF-514-100	50-100 µg labeling

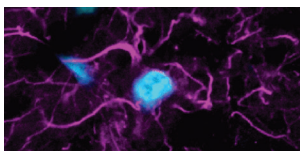
CF555 Antibody Labeling Kit

CF-555-20	5-20 µg labeling
CF-555-50	20-50 µg labeling
CF-555-100	50-100 µg labeling

CF568 Antibody Labeling Kit

CF-568-20	5-20 µg labeling
CF-568-50	20-50 µg labeling
CF-568-100	50-100 µg labeling

TrueBlack™ Lipofuscin Autofluorescence Quencher



Features:

- Quenches lipofuscin with less background than Sudan Black B

TB-250-1 1 ml

CFTM Dye List & Quick Reference Table

GoldBio's breakthrough antibody labeling technology with CFTM dyes: Mix-n-StainTM antibody labeling kits contain everything you need to rapidly label an antibody. The labeling procedure comprises simple mixing of your antibody with the reaction buffer and an optimally formulated dye (provided), followed by a brief incubation.

CF TM dye	.Ex (nm)	.Em (nm)	Excitation *	Replacement for	Features and applications
CF TM 350	347	448	UV	Alexa Fluor [®] 350, AMCA, DyLight [®] 350	<ul style="list-style-type: none"> Brightest blue fluorescent conjugates for 350 nm excitation Highly water-soluble and pH insensitive
CF TM 405M	408	452	405 nm	BD Horizon TM V450, eFluor [®] 450, Pacific Blue [®]	<ul style="list-style-type: none"> More photostable than Pacific Blue[®] dye with less green spill-over Excellent choice for super-resolution imaging by SIM
CF TM 405L	395	545	405 nm	Pacific Orange [®]	<ul style="list-style-type: none"> 405 nm excitable orange fluorescent dye for multicolor detection
CF TM 440	440	515	405 nm	Alexa Fluor [®] 430	<ul style="list-style-type: none"> Photostable 405 nm excitable green dye
CF TM 488A	490	515	488 nm	ATTO 488, Alexa Fluor [®] 488, Cy [®] 2, DyLight [®] 488, FAM, FITC, Fluorescein	<ul style="list-style-type: none"> Less non-specific binding and less red spill-over than Alexa Fluor[®] 488 Very photostable Compatible with super-resolution imaging by TIRF
CF TM 514	516	548	488 nm	Alexa Fluor [®] 514	<ul style="list-style-type: none"> Green dye that can be separated from CFTM488A by spectral unmixing
CF TM 532	527	558	532 nm	Alexa Fluor [®] 532, ATTO 532	<ul style="list-style-type: none"> Significantly brighter than Alexa Fluor[®] 532
CF TM 543	541	560	532, 543, or 546 nm	Alexa Fluor [®] 546, Tetramethylrhodamine (TAMRA)	<ul style="list-style-type: none"> Significantly brighter than Alexa Fluor[®] 546
CF TM 555	555	565	532, 543, 546,, 555, or 568 nm	Alexa Fluor [®] 555, ATTO 550, Cy [®] 3, DyLight [®] 549, TRITC	<ul style="list-style-type: none"> Brighter than Cy[®]3 Validated in multicolor super-resolution imaging by STORM
CF TM 568	562	583	532, 543, 546, 555, or 568 nm	Alexa Fluor [®] 568, ATTO 565, Rhodamine Red	<ul style="list-style-type: none"> Optimized for the 568 nm line of the Ar-Kr mixed-gas Brighter and more photostable than Alexa Fluor 568 Compatible with TIRF and multicolor STORM
CF TM 594	593	614	532, 543, 546, 555, or 568 nm	Alexa Fluor [®] 594, ATTO 594, DyLight [®] 594, Texas Red [®]	<ul style="list-style-type: none"> Yields the brightest conjugates among spectrally similar dyes Extremely photostable
CF TM 633	630	650	633 or 635 nm	Alexa Fluor [®] 633, Alexa Fluor [®] 647, Cy [®] 5, DyLight [®] 633	<ul style="list-style-type: none"> Yields the brightest antibody conjugates among spectrally similar dyes Far more photostable than Alexa Fluor[®] 647 Compatible with super-resolution TIRF, FIONA, and gSHRImP
CF TM 640R	642	662	633, 635, or 640 nm	Alexa Fluor [®] 647, ATTO 647N, Cy [®] 5, DyLight [®] 649	<ul style="list-style-type: none"> Has the best photostability among dyes with Cy[®]5-like spectra Yields highly fluorescent protein conjugates Compatible with TIRF and FLIMP super-resolution techniques
CF TM 647	650	665	633, 635, or 640 nm	Alexa Fluor [®] 647, ATTO 647N, Cy [®] 5, DyLight [®] 649	<ul style="list-style-type: none"> Brighter than Cy[®]5 Compatible with multicolor super-resolution imaging by STORM
CF TM 660C	667	685	633, 635, or 640 nm	Alexa Fluor [®] 660	<ul style="list-style-type: none"> Much brighter and more photostable than Alexa Fluor[®] 660 Compatible with multicolor super-resolution imaging by STORM
CF TM 660R	663	682	633, 635, or 640 nm	Alexa Fluor [®] 660	<ul style="list-style-type: none"> Brighter than Alexa Fluor[®] 660 The most photostable 660 nm dye
CF TM 680	681	698	680 or 685 nm	Alexa Fluor [®] 680, Cy [®] 5.5, DyLight [®] 680, IRDye [®] 680LT	<ul style="list-style-type: none"> The brightest among spectrally similar 680 nm dyes Validated in multicolor STORM and dual-color 3D super-resolution imaging Compatible with LI-COR[®] Odyssey[®] System
CF TM 680R	680	701	680 or 685 nm	Alexa Fluor [®] 680, Cy [®] 5.5, DyLight [®] 680, IRDye [®] 680LT	<ul style="list-style-type: none"> The most photostable 680 nm dye Suitable for labeling nucleic acids and small biomolecules Compatible with LI-COR[®] Odyssey[®] System Compatible with STED and single molecule spectroscopy
CF TM 750	755	777	680 or 685 nm	Alexa Fluor [®] 750, Cy [®] 7, DyLight [®] 750, IRDye [®] 750	<ul style="list-style-type: none"> Exceptionally bright and stable Highly water soluble without bearing excessive charge Validated in super-resolution imaging by STORM
CF TM 770	770	797	785 nm	DyLight [®] 800, IRDye [®] 800CW, ZW800-1	<ul style="list-style-type: none"> Exceptionally bright and stable Compatible with LI-COR[®] Odyssey[®] System
CF TM 790	784	806	785 nm	Alexa Fluor [®] 790	<ul style="list-style-type: none"> Exceptionally bright and stable Highly water soluble without bearing excessive charge

*Visible and far-red dyes can be excited by a UV light source for epifluorescence microscopy.

Alexa Fluor, Cascade Blue, Pacific Blue, and Texas Red are registered trademarks of Invitrogen; ATTO dyes are products of ATTO-TEC GmbH; BD Horizon is a trademark of BD Biosciences; Cy[®] is a registered trademark of GE Healthcare; DyLight is a registered trademark of Thermo Fisher Scientific; eFluor is a registered trademark of eBioscience; IRDye and Odyssey are registered trademarks of LI-COR Bioscience; Krome Orange is a trademark of Beckman Coulter; LightCycler is a registered trademark of Roche Applied Science.