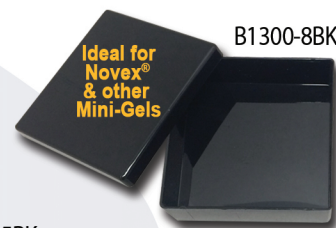


# Western Blot Boxes

- For wholes, halves, strips or minis
- A perfect box for every blot
- Reduce antibody usage
- Hinged lid reduces evaporation
- Opaque black sizes available



Cat. No.	Description	Application	Qty
B1200-3	Micro-strip, 73 x 30 x 19mm	Various	5
B1200-5	Mini-rectangle, 73 x 51 x 32mm	Half mini-protein gels	5
B1200-7	Rectangle, 89 x 65 x 25mm	Mini-protein gels	5
B1200-7BK	Rectangle, 89 x 65 x 25mm, Black	(Bio-Rad Proteran 3 & similar)	5
B1200-9	Long strip, 95 x 30 x 16mm	Protean 3 (cut up)	5
B1200-11	Medium strip, 111 x 52 x 47mm	Various	5
B1200-13	Large, 117 x 89 x 28mm	Cambrex PAGER Gold, Novex, Might Small, SureLock mini	5
B1200-13BK	Large, 117 x 89 x 28mm, Black		5
B1200-15	Square, 116 x 116 x 32mm	Owl Penguin P9DS/Puffin	5
B1200-15BK	Square, 116 x 116 x 32mm, Black		5
B1200-17	Extra Large, 152 x 102 x 32mm	Bio-Rad Criterion, Amersham	5
B1200-19	XXL, 152 x 102 x 51mm	Bio-Rad Criterion, Amersham	5
B1300-8BK	Square, 85x85x28mm, Pull-Off Lid, Blk	Novex™ Mini Gels	10

No matter what size your blot is, there's an MTC box that fits it perfectly. With boxes that are correctly matched to common blot sizes, you can fit more blots on shakers/rockers while keeping reagent and antibody usage to an absolute minimum. Additionally, all corners are formed at a 90° angle and the bottom surface is uniformly flat, further reducing consumption of costly reagents and antibodies. (For example, popular mini-gels require only about 4mL.)

At a price that makes them truly disposable, all sizes are engineered from crystal clear polystyrene (except B1200-7BK, B1200-13BK, B1200-15BK & B1300-8BK, which are an opaque black that protects light sensitive samples). All sizes except B1300-8BK are also equipped with an easy-to-open hinged lid that reduces evaporation.

## Western MultiBoxes™



B1212



B1203



B1204



B1206

New from MTC Bio, the MultiBox™ Western Blotting Box family. The popularity of our 6-place box has proven that researchers love the ease and convenience of using one box to process multiple gels. We've taken some of our most popular box sizes, and multiplied them, allowing end-users to compare results side by side in real time.

Cat. No.	Compartments	Box Dims. (LxWxH)	Compartment Dims. (LxWxH)	Qty
B1212	2 compartments	85 x 174 x 30mm	85 x 85 x 30mm	6
B1203	4 compartments	72 x 115 x 28mm	32 x 53 x 28mm	6
B1204	4 compartments	80 x 142 x 28mm	38 x 71 x 38mm	6
B1206	6 compartments	107 x 210 x 35mm	33 x 103 x 35mm	4

# BluLite™ UHC Western Blotting Film

- Light Blue Base
- Ideal for Chemiluminescence
- Suitable for <sup>14</sup>C, <sup>32</sup>P, <sup>33</sup>P, <sup>125</sup>I, <sup>35</sup>S
- Ultra-High Contrast
- Reduced Background
- Publication Quality

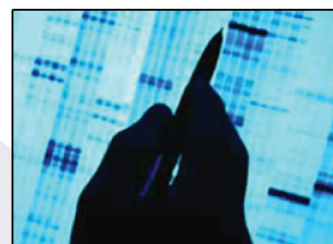
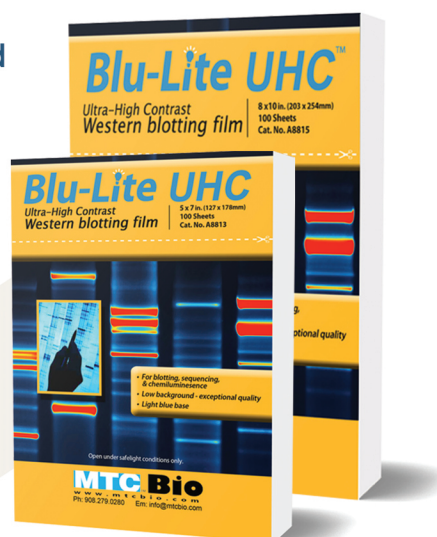
BluLite™ UHC is MTC Bio's most popular line of high contrast, blue-sensitive autoradiography film. Blue-Lite film is specially formulated for an optimized balance of high contrast and minimal background. This low background, high contrast formula is produced on a lighter blue base, making it ideal for all autoradiographic and electrophoretic applications.

In addition to Blu-Lite's sensitivity and increased contrast characteristics, it is also coated on both sides (double emulsion) for improved consistency and overall performance. This new film reliably produces sharp images which allow for maximum DNA visualization with unsurpassed clarity.

Especially useful with chemiluminescence, Blu-Lite™ HS works well with <sup>14</sup>C, <sup>32</sup>P, <sup>33</sup>P, <sup>125</sup>I, and <sup>35</sup>S.

Compatible with automatic processors and manual development methods, Blu-Lite compares directly with films costing 3-5 times as much.

With a shelf life of at least 18 months from date of production, Blu-Lite is packaged in lined, light-safe dispenser boxes that include an improved "lift-off" cover. Film is packaged 100 sheets per box.



Cat. No.	Description	Qty
A8813	BluLite™ UHC Western Blotting Film, 5x7in.	100/box
A8815	BluLite™ UHC Western Blotting Film, 8x10in.	100/box

# BluBlot™ Western Blotting Film

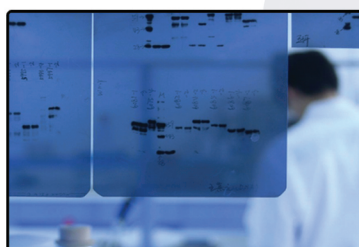
- Medium/Dark Blue Base
- Suitable for <sup>14</sup>C, <sup>32</sup>P, <sup>33</sup>P, <sup>125</sup>I, <sup>35</sup>S
- Ideal for Chemiluminescence
- Publication Quality
- Double Emulsion
- High Sensitivity



BluBlot™ HS is a high quality, highly sensitive film that is ideal for a wide range of electrophoretic and autoradiography applications. It can be used with calcium tungstate or blue-emitting rare-earth screens. BluBlot™ HS exhibits excellent sensitivity and is coated on both sides for improved consistency and overall performance. It reliably produces sharp, bright images that are easily visualized and suitable for publication.

Especially useful with chemiluminescence, BluBlot™ HS works well with <sup>14</sup>C, <sup>32</sup>P, <sup>33</sup>P, <sup>125</sup>I, and <sup>35</sup>S.

Compatible with automatic processors and manual development methods, BluBlot HS compares directly with films costing up to 3 times as much. With a shelf life of at least 18 months from date of production, BluBlot™ HS is packaged in lined, light-safe dispenser boxes of 100 sheets per box.



Cat. No.	Description	Qty
A8803	BluBlot™ HS Western Blotting Film, 5x7in.	100/box
A8805	BluBlot™ HS Western Blotting Film, 8x10in.	100/box