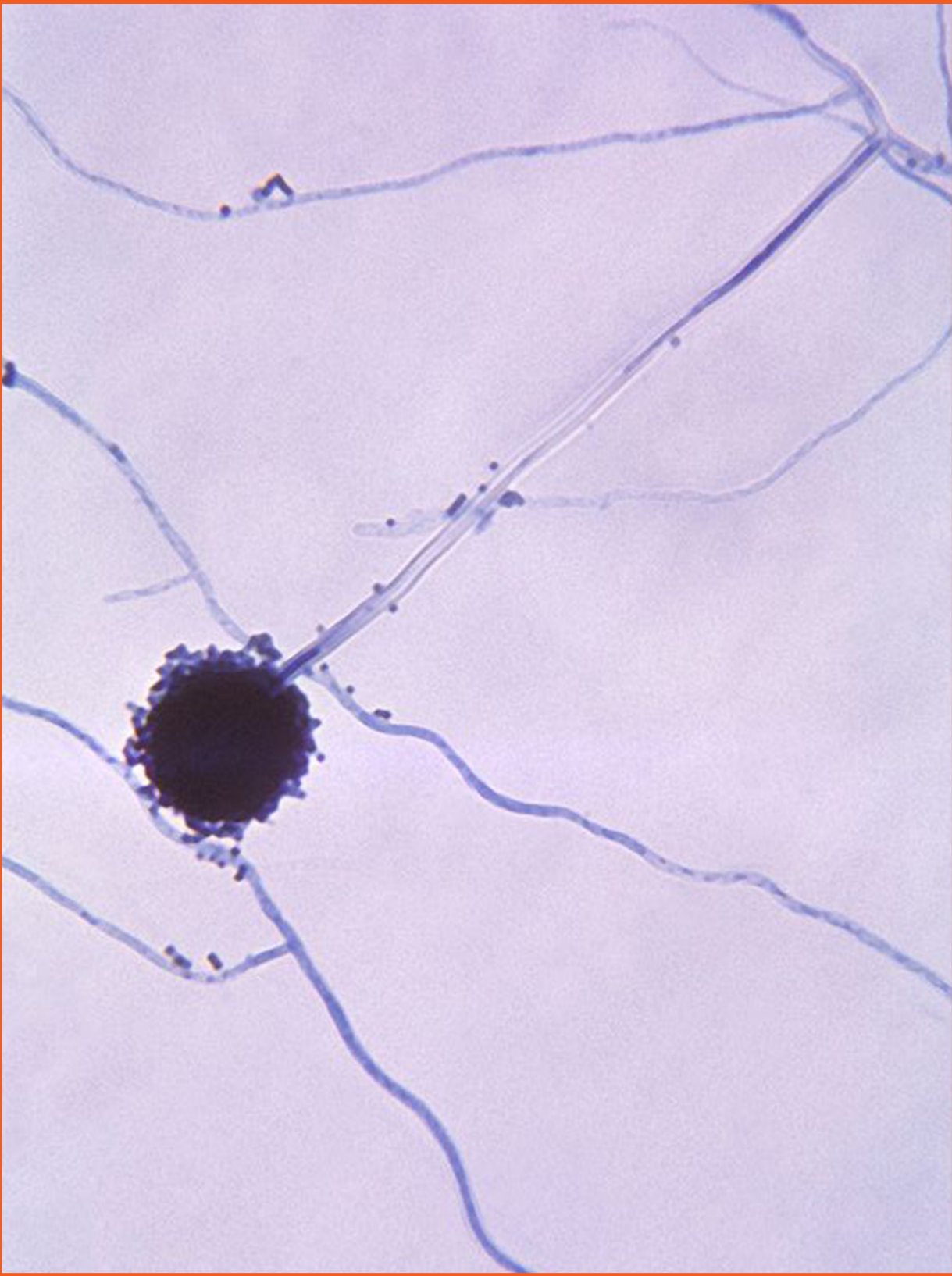


PHYTOPATHOLOGY



PHYTOPATHOLOGY

*Phyto*Technology Laboratories® offers a line of media and products for use in phytopathology research. Phytopathology media are manufactured with the same dedication and standards of quality that has made *Phyto*Technology Laboratories® plant tissue culture media so popular.

Most components used in the formulation of Phytopathology Media are available as individual components. Check the Biochemicals Section on Page 15 for component product listings and more information.

Be sure to check www.phytotechlab.com frequently as we continue to expand this product line.

FOR MORE INFORMATION ON PHYTOPATHOLOGY MEDIA

See "Phytopathology & Microbiology Media" on page 261 in the Technical Section.

A1286 - ALCIAN BLUE

See Seed Testing Section for Complete Listing

A1272 - ANILINE BLUE

See Seed Testing Section for Complete Listing

B129 - BACTERIA SCREENING MEDIUM 523

Used to identify pathogen-free explants. Does not promote explant growth. Formulation as described by Viss & Driver (1991).

- Store at 2 to 6 °C
- Soluble in Water (Partially)
- Use at 32.15 grams per liter
- Plant Tissue Culture Tested

Components (mg/L)

Magnesium Sulfate•7H ₂ O	150
Potassium Phosphate, Monobasic, Anhydrous	2,000
Agar	8,000
Casein, Enzymatic Hydrolysate	8,000
Sucrose	10,000
Yeast Extract	4,000
Approximate pH at Room Temperature	6.0 ± 0.5

AVAILABLE PACKAGE SIZES

1L	100g	500g	1Kg
----	------	------	-----

B1714 - BROMOTHYMOL BLUE

See Seed Testing Section for Complete Listing

C184 - CASEIN, ENZYMATIC HYDROLYSATE

See Biochemicals Section for Complete Listing

C1842 - CELLOBIOSE

See Seed Testing Section for Complete Listing

C1970 - CEPHALEXIN MONOHYDRATE

See Seed Testing Section for Complete Listing

C2112 - CEPHALEXIN SOLUTION (100 MG/ML)

See Seed Testing Section for Complete Listing

C442 - CORN MEAL AGAR

- Store at Room Temperature
- Soluble in Water (Partially)
- Use at 22.00 grams per liter

Components (mg/L)

Agar	7,000
Corn Meal	15,000
Approximate pH at Room Temperature	7.2 ± 0.5

AVAILABLE PACKAGE SIZES

1L	100g	500g
----	------	------

C1830 - CRYSTAL VIOLET

See Seed Testing Section for Complete Listing

H276 - CTAB

See Molecular Biology Section for Complete Listing

H3818 - CTAB SOLUTION (100 MG/ML)

See Molecular Biology Section for Complete Listing

C506 - CZAPEK-DOX AGAR

Czapek-Dox broth is a semi-synthetic broth used for the cultivation of fungi. This medium is prepared according to the formula developed by Thom and Church (1926).

- Store at 2 to 6 °C
- Soluble in Water (Partially)
- Use at 50.01 grams per liter

Components (mg/L)

Agar	15,000
Ferrous Sulfate•7H ₂ O	10
Magnesium Sulfate, Anhydrous	500
Potassium Chloride	500
Potassium Phosphate, Dibasic, Anhydrous	1,000
Sodium Nitrate	3,000
Sucrose	30,000
Approximate pH at Room Temperature	7.9 ± 0.5

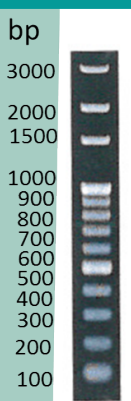
AVAILABLE PACKAGE SIZES

1L	500g
----	------

C443 - CZAPEK-DOX BROTH	
Czapek-Dox broth is a semi-synthetic broth used for the cultivation of fungi. This medium is prepared according to the formula developed by Thom and Church (1926).	
<ul style="list-style-type: none"> • Store at 2 to 6 °C • Soluble in Water • Use at 35.01 grams per liter 	
Components (mg/L)	
Ferrous Sulfate•7H ₂ O	10
Magnesium Sulfate, Anhydrous	500
Potassium Chloride	500
Potassium Phosphate, Dibasic, Anhydrous	1,000
Sodium Nitrate	3,000
Sucrose	30,000
Approximate pH at Room Temperature	8.3 ± 0.5
AVAILABLE PACKAGE SIZES	
1L	500g

G3574 - GUAIACOL
See Seed Testing Section for Complete Listing

INDEXING WITH PHYTOPATHOLOGY MEDIA
See "Figure 20. Media Used in Indexing Explants" on page 248 in the Technical Section.

MOLECULAR BIOLOGY KITS	
	<p><i>Phyto</i>Technology Laboratories® offers a variety of kits for molecular biology. Please see the molecular biology section on pages 131 to 150 for more information.</p> <ul style="list-style-type: none"> • RNA Extraction Kits • Genomic DNA Extraction Kits • Plasmid DNA Extraction Kits • DNA Ladder Kits

L476 - LEIFERT & WAITES STERILITY TEST MEDIUM	
This medium was developed to determine and identify potential pathogens in explants. Formulation as described by Leifert, C & WM Waites (1992).	
Store at 2 to 6 °C Soluble in Water Use at 45.22 grams per liter Plant Tissue Culture Tested	
Components (mg/L)	
Ammonium Nitrate	825
Boric Acid	3.1
Calcium Chloride, Anhydrous	166.1
Cobalt Chloride•6H ₂ O	0.0125
Cupric Sulfate•5H ₂ O	0.0125
Na ₂ EDTA•2H ₂ O	18.63
Ferrous Sulfate•7H ₂ O	13.9
Magnesium Sulfate, Anhydrous	90.35
Manganese Sulfate•H ₂ O	8.45
Molybdc Acid, Disodium Salt•2H ₂ O	0.125
Potassium Iodide	0.415
Potassium Nitrate	950
Potassium Phosphate, Monobasic, Anhydrous	85
Sodium Chloride	2,000
Zinc Sulfate•7H ₂ O	4.3
D-Glucose, Anhydrous	5,000
Glycine	1.0
<i>myo</i> -Inositol	50
Meat Extract	7,000
Nicotinic Acid	0.25
Peptone from Meat	4,000
Pyridoxine•HCl	0.25
Sucrose	15,000
Thiamine•HCl	0.05
Yeast Extract	10,000
Approximate pH at Room Temperature	6.8 ± 0.5
AVAILABLE PACKAGE SIZES	
500g	1Kg

M474 - MALT EXTRACT
See Biochemicals Section for Complete Listing

M567 - MEAT EXTRACT
See Biochemicals Section for Complete Listing

M5781 - METHYLENE BLUE
See Seed Testing Section for Complete Listing

PRODUCT CATALOGUE & LABORATORY GUIDE

O606 - OAT MEAL AGAR

- Store at Room Temperature
- Soluble in Water (Partially)
- Use at 10.50 grams per liter

Components (mg/L)

Agar	7,000
Rolled Oats	3,500
Approximate pH at Room Temperature	6.9 ± 0.5

AVAILABLE PACKAGE SIZES

1L	100g	500g
----	------	------

P6737 - PCNB

See Seed Testing Section for Complete Listing

P777 - PENICILLIN G

See Seed Testing Section for Complete Listing

P6767 - PENICILLIN G SOLUTION (10 MG/ML)

See Seed Testing Section for Complete Listing

PEPTONE FROM MEAT -OR- PEPTONE FROM SOY

See Biochemicals Section for Complete Listings

P6809 - POLYMYXIN B SULFATE

See Seed Testing Section for Complete Listing

P6719 - POLYMYXIN B SOLUTION (10 MG/ML)

See Seed Testing Section for Complete Listing

P772 - POTATO DEXTROSE AGAR

- Store at Room Temperature
- Soluble in Water (Partially)
- Use at 39.00 grams per liter

Components (mg/L)

Agar	15,000
D-Glucose, Anhydrous	20,000
Potato Powder	4,000
Approximate pH at Room Temperature	7.0 ± 0.5

AVAILABLE PACKAGE SIZES

1L	100g	500g	2.5Kg
----	------	------	-------

P762 - POTATO DEXTROSE BROTH

- Store at Room Temperature
- Soluble in Water
- Use at 24.00 grams per liter

Components (mg/L)

D-Glucose, Anhydrous	20,000
Potato Powder	4,000
Approximate pH at Room Temperature	7.0 ± 0.5

AVAILABLE PACKAGE SIZES

1L	100g	500g
----	------	------

P692 - POTATO POWDER

See Biochemicals Section for Complete Listing

R7171 - ROSE BENGAL

See Seed Testing Section for Complete Listing

S7775 - SALINE SOLUTION (0.85%)

See Seed Testing Section for Complete Listing

T8199 - TETRAZOLIUM BLUE

See Biochemicals Section for Complete Listing

T7968 - TREHALOSE DIHYDRATE

See Seed Testing Section for Complete Listing

T8092 - TOLUIDINE BLUE O

See Seed Testing Section for Complete Listing

T8110 - TYROTHRIN

See Seed Testing Section for Complete Listing

T8020 - TYROTHRIN (10 MG/ML)

See Seed Testing Section for Complete Listing

T752 - TRIS EDTA BUFFER SOLUTION, pH 8.0

See Molecular Biology Section for Complete Listing

T832 - TRYPTONE

See Biochemicals Section for Complete Listing

T848 - TRYPTOSE

See Biochemicals Section for Complete Listing

W783 - WATER, PLANT TISSUE CULTURE GRADE

See Molecular Biology Section for Complete Listing

W887 - WILKINS-CHALGREN AGAR

See Microbiology Section for Complete Listing

X8454 - XTS MEDIUM

See Seed Testing Section for Complete Listing

Y892 - YEAST EXTRACT

See Biochemicals Section for Complete Listing

Y8488 - YEAST MALT BROTH

See Microbiology Section for Complete Listing

YEP BROTHS & MEDIUM

See Microbiology Section for Complete Listings

Y893 - YMB MEDIUM

See Microbiology Section for Complete Listing