

Transilluminator

UltraSlim® LED Transilluminator
UltraBright LED Transilluminator
UltraSlim UV Transilluminator
UltraBright UV Transilluminator
BandPeeper LED Transilluminator
SlimWhite

Whole New designs! Transilluminators are the first choices for analytical applications with cutting-edge construction for increased performance and efficiency.

Optimized for use with nucleic acid and protein stains such as EtBr, SYBR® Safe, SYBR Gold, SYBR® Green I & II, SYPRO® Ruby, SYPRO® Orange, Coomassie Fluor™ Orange stains, GelGreen, GelRed and Lumitein™ Protein Gel Stain.

UltraSlim[®] LED Transilluminator

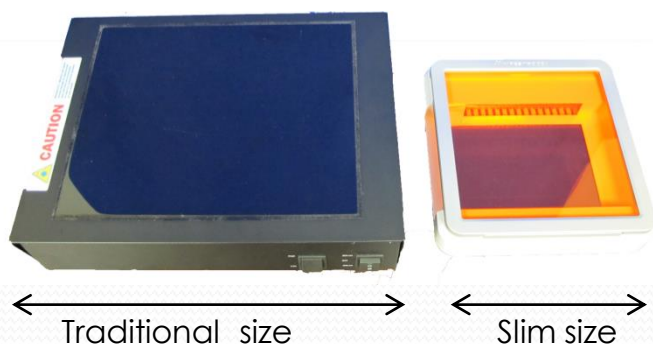
Smaller and strong

- **Smaller:**
Single-handedly take
- **Accurate:**
<10% CV across the full filter area
- **Sensitivity:**
Up to 1 ng nucleic acid
- **Safe:**
No damage to you and your samples
- **Easy:**
Easy for observation and gel cutting



The UltraSlim LED Transilluminator is designed for viewing stained gels on the laboratory bench, or within gel documentation systems. The dimensions are only 210(W) x 210(D) x 30(H)mm.

Lighting from the LED source inside the instrument produces blue light with a narrow emission peak centered at approximately 470 nm, which is more effective for the excitation of most nucleic acid and protein stains.



Ordering Information and Specification:

Products	UltraSlim LED
Cat No.	SLB-01W
Outer dimensions (mm)	210D x 210W x 30H
View size (mm)	120D x 70W
Wavelength (nm)	470 nm
Light source	Blue LED light
Uniformity	10 % CV
Power	DC24V/1.25A
Weight (Kg)	2.3kg

Related product:

Products	MaestroSafe Nucleic Acid loading dye	MaestroSafe Prestained dye	MiniCute Imager
Cat No.	MR-031201	MR-031203	MC-02
Description	Substitute for loading dye	Prestained with agarose	Imagers for DNA and protein gels photography which is also easy for gel cutting after photography

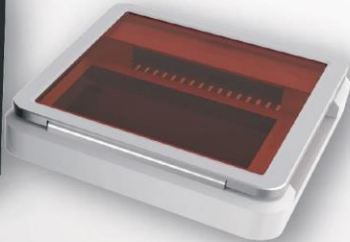
UltraSlim[®] Blue LED + White Light panel

ILLUMINATOR



The UltraSlim LED illuminator is not only designed for viewing DNA/RNA gels, also has a whole new white light panel to use for protein gels on the laboratory bench, or within gel documentation systems.

Lighting from the LED source inside the instrument produces blue light with a narrow emission peak centered at 470 nm and a high brightness white light, which is more effective for the excitation of most nucleic acid and protein stains.



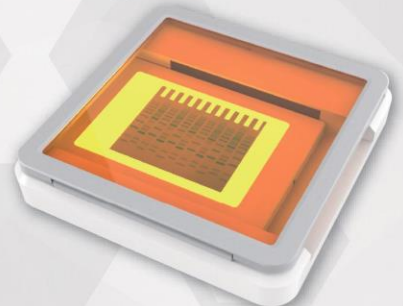
DNA/RNA gel
Blue light LED



Specification

Cat no.	SLB-03W (SLB-01W+SW-04)
Dimensions (mm)	210 (D)* 210 (W)* 30 (H)
View Size (mm)	120 (D)* 70 (W) -Blue 130 (D)* 90 (W) -White
Light Source	Blue LED (470nm)+White LED
Uniformity	10 % CV
Blocking filter	Amber color
Power	DC 12V / 2.5A
Weight (Kg)	2.6

Protein gel
White light LED



UltraBright LED Transilluminator

Safe for You, Good for your sample

- **Accurate:**
< 5% CV across the full filter area
- **Sensitivity:**
Up to 1 ng nucleic acid
- **Safe:**
No damage to you and your samples
- **Easy:**
Easy for observation and gel cutting
- **Flexibility:**
Suit for several kinds of stains and adjustable intensity

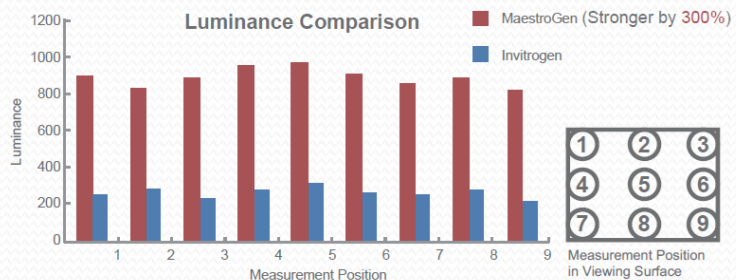


The UltraBright LED Transilluminator is designed for viewing stained gels on the laboratory bench, or within gel documentation systems.

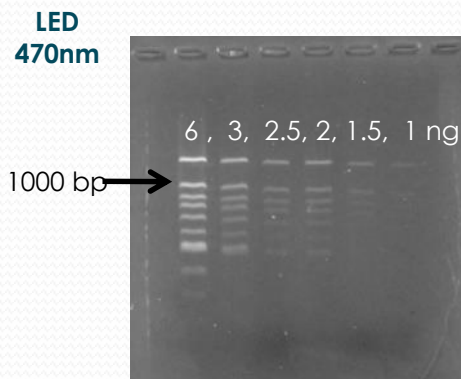
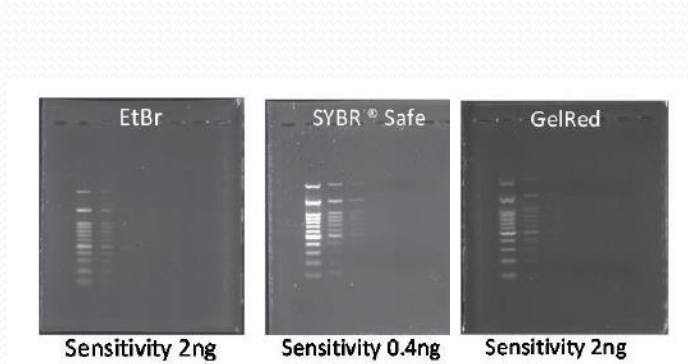
Light from the LED source inside the instrument producing light with a narrow emission peak centered at approximately 470 nm, effective for the excitation of nucleic acid and protein stains such as EtBr, SYBR® Safe, SYBR Gold, SYBR® Green I & II, SYPRO® Ruby, SYPRO® Orange, Coomassie Fluor™ Orange stains, GelGreen, GelRed and Lumitein™ Protein Gel Stain.



Variance of light < 5%,
the best spec in the world



The best uniformity and intensity



The best sensitivity (1 ng) when MaestroSafe is used combined with MaestroGen LED Transilluminator.

Ordering Information and Specification:

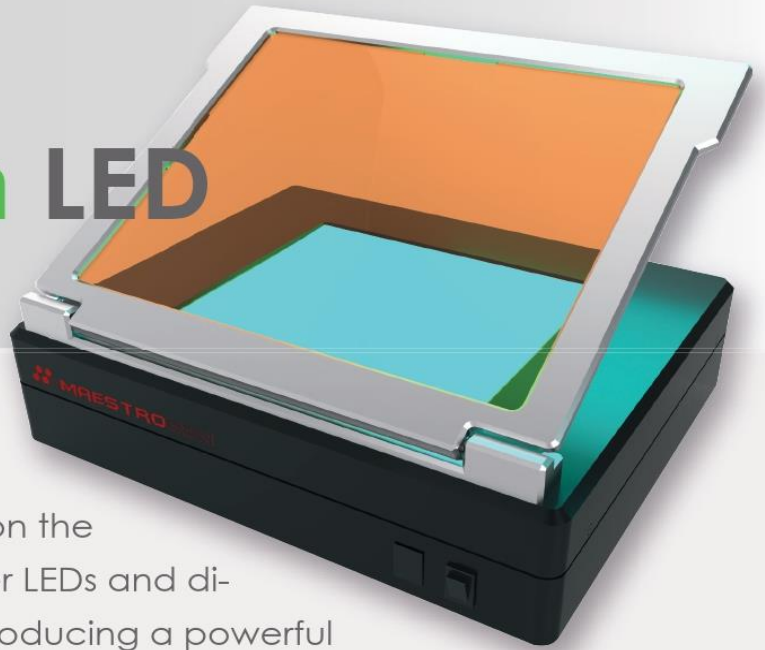
Products	UltraBright LED Transilluminator	
Cat No.	LB-16	LB-17
Outer dimensions (mm)	280D x 340W x 80H	280D x 340W x 80H
View size (mm)	160D x 200W	160D x 200W
Wavelength (nm)	470 nm	470 (Blue), 530 (Green), 630 (Red); no 630(Red) filter
Light source	Blue LED light	Blue Green Red LED light
Uniformity	< 5% CV	< 5% CV
Power	24V - 1.25A	24V - 1.25A
Weight (Kg)	3.6 kg	3.6 kg

Related product:

Products	MaestroSafe Nucleic Acid loading dye	MaestroSafe Prestained dye	MiniCute Imager
Cat No.	MR-031201	MR-031203	MC-02
Description	Prestained with agarose.	Substitute for loading dye.	Imagers for DNA and protein gels photography which is also easy for gel cutting after photography

UltraBright[®] Blue/Green LED

TRANSILLUMINATOR



MaestroGen UltraBright Blue/Green LED Transilluminator is designed for viewing stained gels on the laboratory bench. With high power LEDs and dichroic filter inside the instrument producing a powerful emission light and remove background completely, effective for the excitation stains such as EtBr, SYBR Green, GelGreen, GelRED, GFP, EGF-Pand. In addition, the light source won't be caused DNA degradation.

Specification

Cat. NO.:	LB-18
Wavelength:	505nm
Light Source:	Nichia LED
Viewing Size:	160(D)*200(W)mm
Blocking Cover:	Aluminum alloy metal frame
Consumption:	24 Watt
Filter:	Amber color
Power:	AC100-240V~50/60 Hz
Weight:	3.8 Kg
Dimensions:	280(D)* 340(W)* 80(H)mm

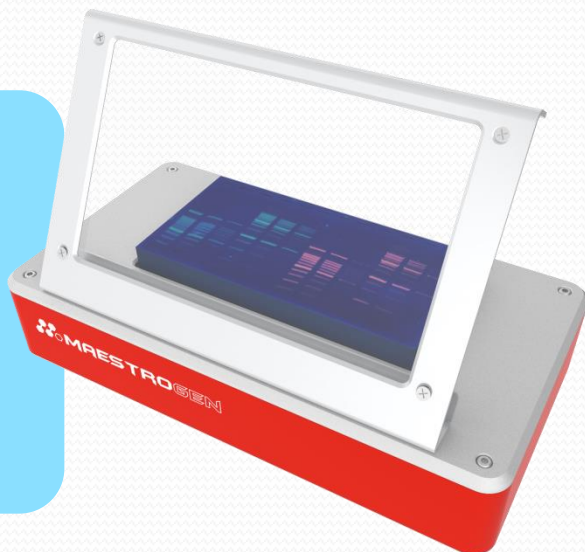


Comparison the Ethidium Bromide gel results with Blue/Green LED light and UV light

UltraSlim UV Transilluminator

As small as it can be

- **Smallness:**
One-handed lifting
- **Accuracy:**
<5% CV across the viewing area
- **Sensitivity:**
Up to 0.5 ng nucleic acid Higher S/N ratio
- **Ease:**
Easy for observation and gel cutting

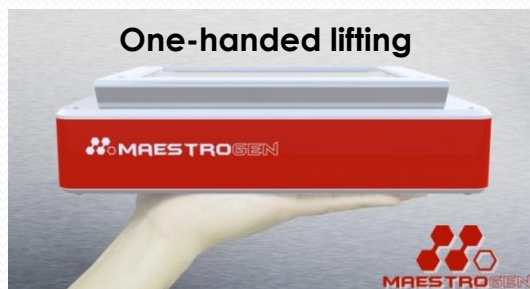


This UV Transilluminator is equipped with a new-design UV blocking cover which is easily detachable for access to the work surface.



Ordering Information and Specification:

Products	UltraSlim UV Transilluminator
Cat No.	UUV-01
Outer dimensions (mm)	247D x 132W x 48.5H
View size (mm)	150D x 80W
Wavelength (nm)	302 nm
Light source	UV lamp X1
Uniformity	+/- 5 %
Power	DC12V/1.5A
Weight (Kg)	1.4 kg



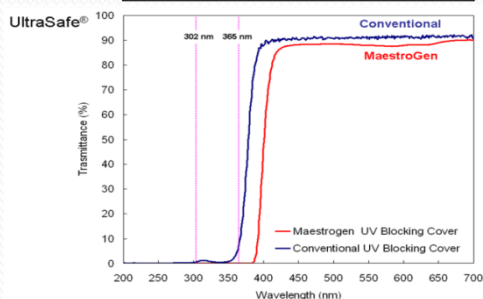
UltraBright UV Transilluminator

High contrast, Strong frame

- **Accuracy:**
 < 5% CV across the viewing area
- **Sensitivity:**
 High contrast with strong frame, up to 0.1 ng nucleic acid
- **Safety:**
 UltraSafe UV blocking cover block 99.99% UV transmittance
- **Ease:**
 Easy for observation and gel cutting
- **Flexibility:**
 Adjustable intensity



UV transmittance	MaestroGen	Conventional
UVA (365 nm)	< 0.1%	8%
UVB (302 nm)	0%	0.38%



High contrast and 99.99% UV transmittance

Ordering Information and Specification:

Products	UltraBright UV Transilluminator			
Cat No.	MLB-21	MB-21	MLB-16	MB-16
View size (mm)	210D x 260W	210D x 260W	160D x 200W	160D x 200W
Wavelength (nm)	302 & 365nm	302 nm	302 & 365nm	302 nm
Light source	UV tubes: 11 x 8W	UV tubes: 6 x 8W	UV tubes: 9 x 8W	UV tubes: 5 x 8W
Blocking cover	Aluminum alloy frame			
Power	100-240V, 50-60Hz			
Weight (Kg)	4.3kg			
Outer dimensions (mm)	280D x 340W x 80H			

Related product:

Products	MiniCute Imager
Cat No.	MC-02
Description	Imagers for DNA and protein gels photography which is also easy for gel cutting after photography

BandPeeper LED Transilluminator

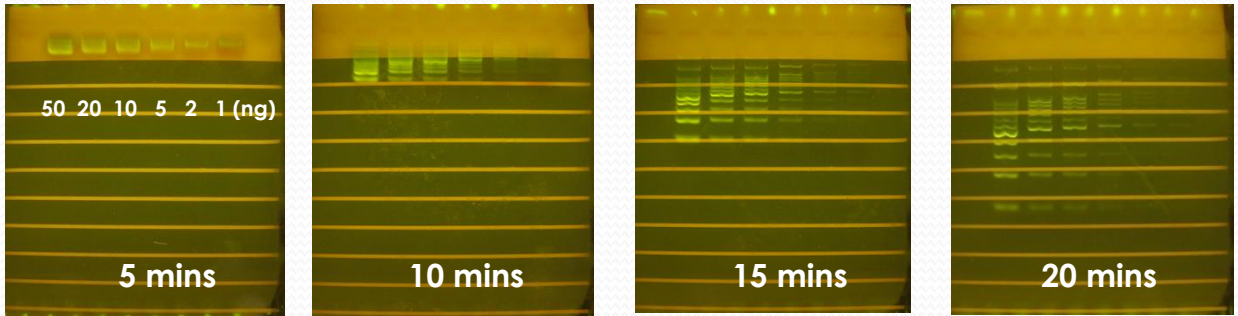
Real-time in gel

- **Innovation:**
The first platform for real-time electrophoresis in gel in the world
- **Convenient:**
Time and cost saving for new sample electrophoresis trial & error
- **Sensitivity:**
2 ng nucleic acid
- **Safe:**
No damage to you and your samples

MaestroGen offers BandPeeper real-time electrophoresis LED transilluminator for DNA gel fluorescent signal observation in water solution. Compatible with Mupid-size tank (Mupid exU series: Mupid exU, Mupid ACE, and Mupid ONE)

- Accurate electrophoresis duration control
- Strong blue LED used with common nucleic acid dyes
- Anti-fog design on amber filter; anti-water condensation
- No decay for DNA gel (UV flashlamp decays DNA gel)





The real-time observation of electrophoresis in gel

Ordering Information and Specification:

Products	BandPeeper LED Transilluminator
Cat No.	RT-172
Outer dimensions (mm)	166D x 170W x 51H
Window size (mm)	150D x 60W
Wavelength (nm)	470 nm
Light source	Blue LED light
Filter type	Amber filter
Power	24V - 1.25A
Weight (Kg)	0.9 kg
Filter surface	Anti-Fog treatment
PCBA surface	Anti-moisture treatment
Compatibility	Mupid tanks (Mupid exU series: exU, ACE, and ONE)

Related product:

Products	MaestroSafe Nucleic Acid loading dye	MaestroSafe Prestained dye
Cat No.	MR-031201	MR-031203
Description	Substitute for loading dye	Prestained with agarose

SlimWhite

ILLUMINATOR



A whole new design of SlimWhite white light panel, the light source which can be used independently, easy to view colorimetric gels, coomassie blue or silver stained media. No need to use UV for white light conversion. High brightness and low power consumption.

● **Uniform:**

Illumination is designed by light guide plate with diffuser

● **Easy to observe:**

Light source is under the gel, avoid bubble and reflection issue

● **Cost Effective:**

Long lifetime (~50,000 hrs), low power consumption

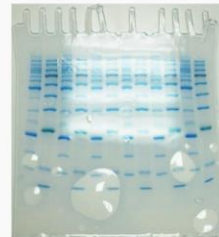
Trans-illumination



Good contrast

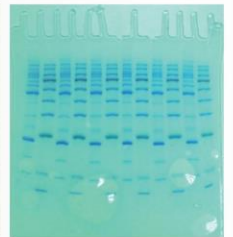
(O)

Epi-illumination



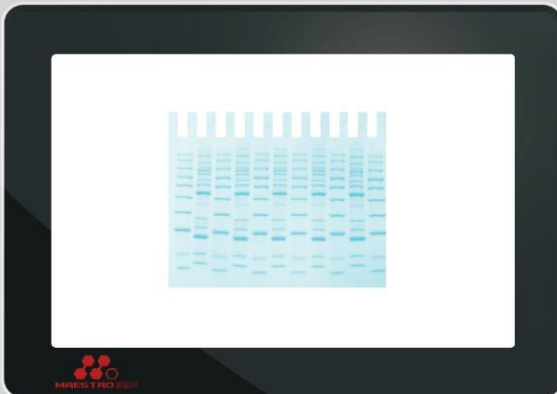
Light reflection issue

(X)



Bubble issue

(X)



Specification

- Cat no.: SW-02
- Dimensions (mm): 292 (D)* 217 (W)* 12.8 (H)
- View Size (mm): 240 (D)* 160 (W)
- Light Source: White light LEDs
- Power: DC12V
- Weight (Kg): 1.2