

ION CHROMATOGRAPHY REFERENCE STANDARD SOLUTIONS



Ion Chromatography Mixture Reference Standards

Product No	Explanation	Matrix	Volume
IC250.Set1	IC anion set for 7 point calibration curve. Calibration set contains 250 ml x 7 bottles. 1-) 250 ml / F - 0,25 mg/l; PO4 - 0,3 mg/L; NO3 - 5 mg/L; Cl - 10 mg/L; SO4 - 10 mg/L 2-) 250 ml / F - 0,5 mg/l; PO4 - 0,5 mg/L; NO3 - 10 mg/L; Cl - 20 mg/L; SO4 - 20 mg/L 3-) 250 ml / F - 0,75 mg/l; PO4 - 0,75 mg/L; NO3 - 20 mg/L; Cl - 30 mg/L; SO4 - 30 mg/L 4-) 250 ml / F - 1 mg/l; PO4 - 1 mg/L; NO3 - 25 mg/L; Cl - 40 mg/L; SO4 - 40 mg/L 5-) 250 ml / F - 1,25 mg/l; PO4 - 1,5 mg/L; NO3 - 35 mg/L; Cl - 50 mg/L; SO4 - 50 mg/L 6-) 250 ml / F - 1,50 mg/l; PO4 - 2,0 mg/L; NO3 - 40 mg/L; Cl - 60 mg/L; SO4 - 60 mg/L 7-) 250 ml / F - 2,0 mg/l; PO4 - 2,5 mg/L; NO3 - 45 mg/L; Cl - 70 mg/L; SO4 - 70 mg/L	Water	250 ml
IC250.Set2	IC cation set for 6 point calibration curve. Calibration set contains 250 ml x 6 bottles. 1-) 250 ml / K - 1 mg/L; Ca - 5 mg/L; Mg - 5 mg/L; Na - 5 mg/L 2-) 250 ml / K - 3 mg/L; Ca - 10 mg/L; Mg - 10 mg/L; Na - 10 mg/L 3-) 250 ml / K - 5 mg/L; Ca - 20 mg/L; Mg - 15 mg/L; Na - 20 mg/L 4-) 250 ml / K - 10 mg/L; Ca - 30 mg/L; Mg - 20 mg/L; Na - 30 mg/L 5-) 250 ml / K - 15 mg/L; Ca - 40 mg/L; Mg - 30 mg/L; Na - 40 mg/L 6-) 250 ml / K - 20 mg/L; Ca - 45 mg/L; Mg - 35 mg/L; Na - 45 mg/L	Water	250 ml
IC100.Set3	IQ/OQ/PQ Kit for the qualification of ion chromatography systems. Contains 100 ml x 6 bromide reference standards: 5; 10; 20; 50; 100; 1000 (mg/l)	Water	100 ml x 6
IC125.M18002	F: 1000, Cl: 1000, NO2: 1000, Br: 1000, NO3: 1000, SO4: 1000, PO4: 1000 (mg/l)	Water	100 ml
IC125.M18003	F: 20, Cl: 30, NO2: 100, Br: 100, NO3: 100, SO4: 150, PO4: 150 (mg/l)	Water	100 ml
IC125.M18004	NH4: 100, Ca: 100, Ba: 100, Mn: 100, Sr: 100, Li: 100, Mg: 100, K: 100, Na: 100 (mg/l)	Water	100 ml
IC125.M18005	NH4: 400, Ca: 1000, Li: 50, Mg: 200, K: 200, Na: 200 (mg/l)	Water	100 ml
IC125.M18006	F: 100, Cl: 100, NO2: 100, Br: 100, NO3: 100, SO4: 100, PO4: 100 (mg/l)	Water	100 ml
IC250.M18006	F: 100, Cl: 100, NO2: 100, Br: 100, NO3: 100, SO4: 100, PO4: 100 (mg/l)	Water	250 ml
IC500.M18002	F: 1000, Cl: 1000, NO2: 1000, Br: 1000, NO3: 1000, SO4: 1000, PO4: 1000 (mg/l)	Water	500 ml
IC500.M18003	F: 20, Cl: 30, NO2: 100, Br: 100, NO3: 100, SO4: 150, PO4: 150 (mg/l)	Water	500 ml
IC500.M18004	NH4: 100, Ca: 100, Ba: 100, Mn: 100, Sr: 100, Li: 100, Mg: 100, K: 100, Na: 100 (mg/l)	Water	500 ml
IC500.M18005	NH4: 400, Ca: 1000, Li: 50, Mg: 200, K: 200, Na: 200 (mg/l)	Water	500 ml
IC125.M18000	Ion Chromatography 7 anion standard - mg/l F: 20, Cl: 100, NO2: 100, Br: 100, NO3: 100, SO4: 100, PO4: 200 in Water	Water	100 ml
IC125.M18001	Ion Chromatography 6 cation standard - mg/l Li: 50, Na: 200, NH4: 250, K: 500, Ca: 500, Mg: 250 in Water	Water	100 ml
IC125.M18008	Ion Chromatography 5 cation standard - mg/l Na: 100, NH4: 100, K: 100, Ca: 100, Mg: 100 in Water	Water	100 ml
IC250.M18008	Ion Chromatography 5 cation standard - mg/l Na: 100, NH4: 100, K: 100, Ca: 100, Mg: 100 in Water	Water	250 ml

Ion Chromatography Single Reference Standards

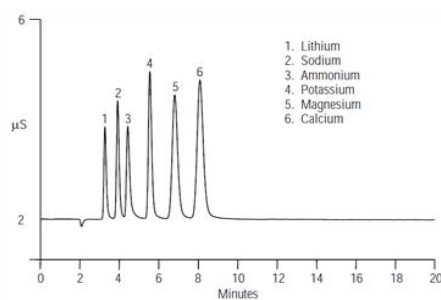
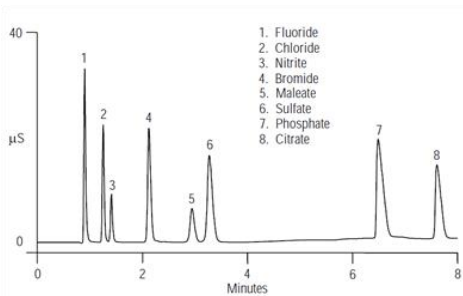
Product No	Explanation	Matrix	Volume
IC125.SO41000.W	Ion Chromatography 1000mg/L Sulfate standard in Water	Water	100 ml
IC250.SO41000.W	Ion Chromatography 1000mg/L Sulfate Standard in Water	Water	250 ml
IC500.SO41000.W	Ion Chromatography 1000mg/L Sulfate Standard in Water	Water	500 ml
IC125.SO31000.W	Ion Chromatography 1000mg/L Sulfite Standard in Water	Water	100 ml
IC250.SO31000.W	Ion Chromatography 1000mg/L Sulfite Standard in Water	Water	250 ml
IC500.SO31000.W	Ion Chromatography 1000mg/L Sulfite Standard in Water	Water	500 ml
IC125.K1000.W	Ion Chromatography 1000mg/L Potassium Standard in Water	Water	100 ml
IC250.K1000.W	Ion Chromatography 1000mg/L Potassium Standard in Water	Water	250 ml
IC500.K1000.W	Ion Chromatography 1000mg/L Potassium Standard in Water	Water	500 ml
IC125.NO31000.W	Ion Chromatography 1000mg/L Nitrate Standard in Water	Water	100 ml
IC250.NO31000.W	Ion Chromatography 1000mg/L Nitrate Standard in Water	Water	250 ml
IC500.NO31000.W	Ion Chromatography 1000mg/L Nitrate Standard in Water	Water	500 ml
IC125.NO21000.W	Ion Chromatography 1000mg/L Nitrite Standard in Water	Water	100 ml
IC250.NO21000.W	Ion Chromatography 1000mg/L Nitrite Standard in Water	Water	250 ml
IC500.NO21000.W	Ion Chromatography 1000mg/L Nitrite Standard in Water	Water	500 ml
IC125.F1000.W	Ion Chromatography 1000mg/L Fluoride Standard in Water	Water	100 ml
IC250.F1000.W	Ion Chromatography 1000mg/L Fluoride Standard in Water	Water	250 ml
IC500.F1000.W	Ion Chromatography 1000mg/L Fluoride Standard in Water	Water	500 ml
IC125.BRO31000.W	Ion Chromatography 1000mg/L Bromate Standard in Water	Water	100 ml
IC250.BRO31000.W	Ion Chromatography 1000mg/L Bromate Standard in Water	Water	250 ml
IC500.BRO31000.W	Ion Chromatography 1000mg/L Bromate Standard in Water	Water	500 ml
IC125.BR1000.W	Ion Chromatography 1000mg/L Bromide Standard in Water	Water	100 ml
IC250.BR1000.W	Ion Chromatography 1000mg/L Bromide Standard in Water	Water	250 ml
IC500.BR1000.W	Ion Chromatography 1000mg/L Bromide Standard in Water	Water	500 ml
IC125.PO41000.W	Ion Chromatography 1000mg/L Phosphate Standard in Water	Water	100 ml

Ion Chromatography Single Reference Standards

Product No	Explanation	Matrix	Volume
IC250.PO41000.W	Ion Chromatography 1000mg/L Phosphate Standard in Water	Water	250 ml
IC500.PO41000.W	Ion Chromatography 1000mg/L Phosphate Standard in Water	Water	500 ml
IC125.P2O71000.W	Ion Chromatography 1000mg/L Pyrophosphate Standard in Water	Water	100 ml
IC500.P2O71000.W	Ion Chromatography 1000mg/L Pyrophosphate Standard in Water	Water	500 ml
IC1000.P2O71000.W	Ion Chromatography 1000mg/L Pyrophosphate Standard in Water	Water	1000 ml
IC125.C6H5O71000.W	Ion Chromatography 1000mg/L Citrate Standard in Water	Water	100 ml
IC500.C6H5O71000.W	Ion Chromatography 1000mg/L Citrate Standard in Water	Water	500 ml
IC1000.C6H5O71000.W	Ion Chromatography 1000mg/L Citrate Standard in Water	Water	1000 ml
IC125.NH41000.W	Ion Chromatography 1000mg/L Ammonium Standard in Water	Water	100 ml
IC250.NH41000.W	Ion Chromatography 1000mg/L Ammonium Standard in Water	Water	250 ml
IC500.NH41000.W	Ion Chromatography 1000mg/L Ammonium Standard in Water	Water	500 ml
IC125.LI1000.W	Ion Chromatography 1000mg/L Lithium Standard in Water	Water	100 ml
IC250.LI1000.W	Ion Chromatography 1000mg/L Lithium Standard in Water	Water	250 ml
IC500.LI1000.W	Ion Chromatography 1000mg/L Lithium Standard in Water	Water	500 ml
IC125.MG1000.W	Ion Chromatography 1000mg/L Magnesium Standard in Water	Water	100 ml
IC250.MG1000.W	Ion Chromatography 1000mg/L Magnesium Standard in Water	Water	250 ml
IC500.MG1000.W	Ion Chromatography 1000mg/L Magnesium Standard in Water	Water	500 ml
IC125.CA1000.W	Ion Chromatography 1000mg/L Calcium Standard in Water	Water	100 ml
IC250.CA1000.W	Ion Chromatography 1000mg/L Calcium Standard in Water	Water	250 ml
IC500.CA1000.W	Ion Chromatography 1000mg/L Calcium Standard in Water	Water	500 ml
IC125.CL1000.W	Ion Chromatography 1000 mg/L Chloride Standard in Water	Water	100 ml
IC250.CL1000.W	Ion Chromatography 1000 mg/L Chloride Standard in Water	Water	250 ml
IC500.CL1000.W	Ion Chromatography 1000mg/L Chloride Standard in Water	Water	500 ml
IC125.PO4P1000.W	Ion Chromatography 1000mg/L Phosphate as Phosphorus Standard in Water	Water	100 ml
IC250.PO4P1000.W	Ion Chromatography 1000mg/L Phosphate as Phosphorus Standard in Water	Water	250 ml

Ion Chromatography Single Reference Standards

Product No	Explanation	Matrix	Volume
IC500.PO4P1000.W	Ion Chromatography 1000mg/L Phosphate as Phosphorus Standard in Water	Water	500 ml
IC125.NH4N1000.W	Ion Chromatography 1000mg/L Ammonium as N Standard in Water	Water	100 ml
IC250.NH4N1000.W	Ion Chromatography 1000mg/L Ammonium as N Standard in Water	Water	250 ml
IC500.NH4N1000.W	Ion Chromatography 1000mg/L Ammonium as N Standard in Water	Water	500 ml
IC125.NO3N1000.W	Ion Chromatography 1000mg/L Nitrate as N Standard in Water	Water	100 ml
IC250NO3N1000.W	Ion Chromatography 1000mg/L Nitrate as N Standard in Water	Water	250 ml
IC500.NO3N1000.W	Ion Chromatography 1000mg/L Nitrate as N Standard in Water	Water	500 ml
IC125.NO2N1000.W	Ion Chromatography 1000mg/L Nitrite as N Standard in Water	Water	100 ml
IC250NO2N1000.W	Ion Chromatography 1000mg/L Nitrite as N Standard in Water	Water	250 ml
IC500.NO2N1000.W	Ion Chromatography 1000mg/L Nitrite as N Standard in Water	Water	500 ml
IC125.CN1000.W	Ion Chromatography 1000mg/L Cyanide Standard in Water	Water	100 ml
IC250.CN1000.W	Ion Chromatography 1000mg/L Cyanide Standard in Water	Water	250 ml
IC500.CN1000.W	Ion Chromatography 1000mg/L Cyanide Standard in Water	Water	500 ml
IC125.I1000.W	Ion Chromatography 1000mg/L Iodide Standard in Water	Water	100 ml
IC500.I1000.W	Ion Chromatography 1000mg/L Iodide Standard in Water	Water	500 ml
IC125.NA1000.W	Ion Chromatography 1000mg/L Sodium Standard in Water	Water	100 ml



The certified values are obtained by gravimetric and volumetric preparations. It is confirmed against certified reference materials traceable to SI of NIST.