

# Laboratory Equipment

High-quality equipment and instruments for a vast range of protocols



**Centrifuges & Stirrers**

**Mixers & Shakers**

**Sampling & Testing Instruments**

## It is our objective to exceed customer expectations in service and product quality

Our strict standards include **3rd party plant reviews** and **100% multi-level product inspections.**

These actions result in a **99.7% reliability** on our equipment and **99.99% reliability** on our laboratory supplies.

We offer an industry leading **FIVE-YEAR** limited warranty for our Benchtop Laboratory Equipment Product line.





## MagFuge®

A high-speed mini centrifuge and magnetic stirrer in one unit



Holds  
5.0 mL  
Tubes

**5**  
Year  
Warranty



**EASY SWITCH OVER**  
**NO**  
TOOLS REQUIRED

High-Speed Mini Centrifuge

Two Units  
in One!

Magnetic Stirrer

High-speed Centrifuge is easy to use and designed to deliver maximum speed (12,500rpm/9,783x g) and flexibility with rapid acceleration and fast controlled breaking

Ideal for most protocols requiring fast spins including PCR, micro- filter cell separation and HPLC. Versatility to handle 0.2, 0.5, 1.5, 2.0 and 5.0 mL tube sizes

### Intuitive One-Dial Programming

- Set speed and time with ease:
- Adjustable speed from 500 to 12,500 rpm
- Speed setting for RPM or RCF
- Adjustable time from 30 seconds to 60 minutes

### Safe to Use

- Safety features help ensure it will not operate when the lid is open, a rotor is jammed, or the unit is out of balance

Item No.	Color	L x W x H in	L x W x H cm
120581	Grey/Purple	9.2 x 7.3 x 4.7	23.5 x 18.5 x 12
120582	Grey/Blue		

### Replacement parts

120622	MagFuge® Rotor, 12 x 1.5/2.0 mL tube
120623	MagFuge® Rotor, 6 x 5.0 mL tube
120624	MagFuge® Stirrer Rotor
120682	MagFuge® Silicone Mat
120527	Power Adapter
120015	Tube Adapters, 0.2 mL, 0.5 mL, Pack of 12 (6 ea.)
HS100502	Universal Power Cord Set

### Patent Information

Community Design No. 003515337-0001-0002

Euro. Pat. App. 3 246 088

US Design Patent No. D814,045

US Patent No. 10471439



High-performance Magnetic Stirrer is designed using high quality rare earth magnets creating a robust magnetic coupling that significantly reduce the chance of spin-outs

Perfect for work with sensitive samples and protocols up to 3L requiring aggressive mixing for full dilution

### Easy to Use

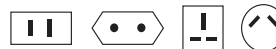
- Set stir mode, speed and time with easy one-dial programming:
- Select Mode: clockwise, c. clockwise and oscillate
- Adjustable speed from 50 to 2,500 rpm
- Continuous and adjustable time settings from 30 seconds to 60 minutes

### Durable Accessories Included

- Re-usable, easy to clean silicone mats included to keep vessel stable and prevent spills and two NdFeB stir bars (40 x 12 mm) with chemical resistant PTFE coating included

### Package Includes

Centrifuge/Stirrer	Stirrer Rotor	12 Tube Adapters 0.2 mL & 0.5 mL
5.0 mL Tube Rotor	2 Stir Bars, 35 mm x 12 mm, cylindrical shape	
1.5/2.0 mL Tube Rotor	2 Silicone Mats for Stirrer Lid	
1 Low Voltage, Double Insulated Power Adapter (100-240 VAC, 50/60 Hz) with 4 Interchangeable Plugs		



### Specifications: Centrifuge

<b>Speed Range</b>	500 – 999 rpm (increments of 1); 1,000 – 5,000 rpm (increments of 5); 5,000 – 12,500 rpm (increments of 25)
<b>RCF</b>	16 – 9,783 x g (max RCF calculated)
<b>Run Time Ranges</b>	30 seconds – 60 minutes (5 second increments)

### Specifications: Magnetic Stirrer

<b>Speed Range</b>	50 – 999 rpm (increments of 1); 1,000 – 2,500 rpm (increments of 5)
<b>Run Time Range</b>	Stirrer Mode: 30 seconds to 60 minutes or continuous (5 second increments)
	Oscillating Stirrer Mode: 1 second – 60 minutes or continuous
	Oscillating Period: 30 seconds – 15 minutes
<b>Capacity</b>	3 L plus, Diameter of vessel not to exceed 130 mm



## Gusto® High-Speed Mini Centrifuge

### Maximum speed with minimal space

This compact centrifuge is ideal for protocols calling for fast spins with a higher RCF requirement

Made of durable ABS with UV-Resistant coating

#### User Friendly

- Intuitive Push button programming and bright LCD screen make it easy to use

#### Quiet Operation

- Brush-less motor enables quiet operation and low vibration

#### Safety Features

- Lid safety feature prevents opening while rotor is turning and clear polycarbonate allows user to see rotor movement for added visual safety
- Includes automatic shut-off feature for sample imbalance and tilt

Item No.	Color	L x W x H in	L x W x H cm
HS10050	Blue ■	8 x 6.7 x 4.5	20.3 x 17.1 x 11.4

#### Replacement parts

HS100502	Universal Power Cord Set
HS100503	Gusto® Rotor 12 x 1.5/2.0 mL Tube (with Cover and Knob)
HS100504	Gusto® Rotor 4 x 8 Strip 0.2 mL Tube (with Knob)
120015	Tube Adapters, 0.2, 0.5 mL, Pack of 12 (6 ea.)
HS100506	Gusto® Rotor Cover (for 12 x 1.5/2.0 mL Tube Rotor Only)
120527	Power Adapter

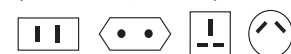
#### Specifications

Speed Range	500–12,500 rpm
Run Time Ranges	1 to 30 minutes
RCF	15 - 9,783 x g (max RCF calculated)



#### Package Includes

- Gusto® High-Speed Mini Centrifuge
- 12-Place 1.5/2.0 mL Tube Rotor
- 32-Place 0.2 mL Tube Rotor (singles, or 4 x 8 Strip)
- 12 Tube Adapters 0.2 mL
- 12 Tube Adapters 0.5 mL
- 1 Low Voltage, Double Insulated Power Adapter (100-240 VAC, 50/60 Hz) with 4 Interchangeable Plugs





The lid can be unlocked and opened with one hand

5  
Year  
Warranty

EASY SWITCH OVER  
NO  
TOOLS REQUIRED



## Sprout® Plus Mini Centrifuge

### Mini but Mighty - ideal for small runs

#### Easy to Use

- Tool-free SnapSpin rotors and quick-spin options make the centrifuges fast and easy to use

#### Ergonomic Design

- The lid was functionally designed to fit in the palm of the hand for one handed lock and unlock allowing for quick tube extraction
- Large lid size accommodates longer and skirted tubes and tall tube lids
- The housing is made from ABS plastic and lid is polycarbonate plastic enabling the unit to be easily cleaned

#### Safety Measures

- Fitted with a braking function, the unit quickly stops spinning when powered off or when lid is opened
- A weighted, rubberized base eliminates potential movement and dampens vibration and noise



Accessory Kit Included

#### Specifications

<b>Speed Range</b>	Approx. 6,000 rpm (fully loaded)
<b>RCF</b>	2,000 x g



#### Package Includes

Sprout® Plus Mini Centrifuge
6-Place 1.5/2.0 mL Tube Rotor
16-Place 0.2 mL Tube Rotor (singles, or 2 x 8 strip)
6 Tube Adapters 0.2 mL
6 Tube Adapters 0.5 mL
4 Lid O-Rings
Storage Case for Rotors and Adapters
Tube Rack
1 Low Voltage, Double Insulated Power Adapter (100-240 VAC, 50/60 Hz) with 4 Interchangeable Plugs



#### Sprout® Plus

Item No.	Color	L x W x H in	L x W x H cm
120610	Green	6 x 5 x 4.3	15.3 x 12.8 x 10.9
120611	Blue		

#### Replacement parts

HS100011	Sprout® Plus Rotor SnapSpin 6 x 1.5/2.0 mL Tube
HS100012	Sprout® Plus Rotor SnapSpin 2 x 8 Strip, 0.2 mL
120148	Sprout® Plus Lid O-Ring, <i>Pack of 10</i>
120491	Sprout® Plus Power Adapter
120015	Tube Adapters, 0.2 mL, 0.5 mL, <i>Pack of 12 (6 ea.)</i>

## Need tubes?

See our portfolio of 0.2 mL, 0.5 mL, 1.5 mL Microcentrifuge Tubes





**Specially Designed Inserts**  
seat the centrifuge, all its accessories,  
and includes a tube rack

**12-Volt Car Adapter**  
for on-the-go testing



## Portable Centrifuge Kit

### Spin samples *on-the-go*

The Portable Centrifuge Kit offers a convenient way to spin down and prepare samples outside of a conventional laboratory environment

#### Immediate Field Processing

- Process samples in remote areas before deterioration can take place
- Allows for immediate on-site testing for faster results
- Made of durable ABS plastic for easy clean in field environments

#### Easy to Use

- Centrifuge is equipped with tool-less SnapSpin rotors for easy change out
- Simple operation with lock/unlock activation

#### Portable Convenience

- All items in kit are housed in a handled DuraPorter® Transport Box for portability
- The handled box has an air-tight seal for optimal sample protection

See page 36 to learn more about the DuraPorter® Transport Box

#### Package Includes

Sprout® Plus Mini-Centrifuge
6-Place 1.5/2.0 mL Tube Rotor
16-Place 0.2 mL Tube Rotor (singles, or 2 x 8 strip)
6 Tube Adapters 0.2 mL
6 Tube Adapters 0.5 mL
4 Lid O-Rings
Storage Case for Rotors and Adapters
Tube Rack
1 Low Voltage, Double Insulated Power Adapter (100-240 VAC, 50/60 Hz) with 4 Interchangeable Plugs
DuraPorter® Transport Box
Tube Rack Insert (12-Place 1.5/2.0 mL, 14-Place 0.2 mL)
Transport Box Dividers
Sprout® Plus Cradle
Portable 12V Sprout® Plus Centrifuge Car Adapter

Item No.	
<b>120568</b>	Portable Centrifugation Kit, 100-240 VAC, 50/60Hz Universal Plug + 12V Car Adapter
<b>120569</b>	Portable Centrifuge Transport Case with Inserts - Only
<b>120570</b>	12V Sprout® Plus Centrifuge Car Adapter*

\*Adapter can be used with Sprout® Plus Mini Centrifuge

See page 8 for functional details on the Sprout® Plus



## Magnetic Induction Stirrer

Strong, motor-less and maintenance free

### Superior Functional Design

- Advanced magnetic coil technology drives the spinning of the stir bar maintaining continuous, constant speed for reproducible results
- Magnetic coupling is optimized by using alternating current (AC) as its driving force strong enough to stir viscous solutions
- Motor-less operation generates minimal heat ideal for stirring temperature sensitive samples and environments for long periods
- With no moving parts, produces less vibration and quieter operation over traditional magnetic stirrers

### Intuitive Operation

- Multiple stirring modes are easy to program
- Bright digital display precisely controls time and speed
- Quickly meets stirring speeds with rapid acceleration and braking (less than 10 seconds)

**5**  
Year  
Warranty

Protective silicone anti-skid plate cover for improved safety



Durable ABS housing is corrosion resistant and easy to clean



### Specifications

<b>Speed Range</b>	50–2,000 rpm variable, 1 rpm increments
<b>Run Time Range</b>	30 seconds to 60 minutes, variable, 1 second increments or continuous
<b>Stirrer Modes</b>	Single clockwise Single counter clockwise Auto reverse rotation 1 to 99 cycles 50% duty
<b>Capacity</b>	3 L plus
<b>Mixing Surface</b>	165 mm diameter, silicone mat 160 mm diameter



### Package Includes

- Rare Earth, NdFeB Magnetic Induction Stirrer
- 2 Stir Bars 35 mm x 12 mm Cylindrical Shape
- 1 Silicone Anti-Skid Plate Cover
- 1 Low Voltage, Double Insulated Power Adapter (100-240 VAC, 50/60 Hz) with 4 Interchangeable Plugs



Item No.	Color	L x W x H in	L x W x H cm
120584	Grey/Purple	9.7 x 7.7 x 3	24.5 x 19.5 x 7.5
120585	Grey/Blue		

### Replacement parts

120738	MI Stirrer Silicone Mat
120739	MI Stirrer Universal Power Adapter

**5**  
Year  
Warranty



## Mini Magnetic Stirrer

Affordable solution, ultimate function

The Mini Magnetic Stirrer is an affordable, dependable solution ideal for general research, academic, life sciences, industrial and clinical lab settings

### Durable Design

- Constructed of chemical resistant ABS and PC blend
- Compact footprint saves valuable space on benchtop
- Lightweight for easy transport

### Ultimate Function

- Powerful magnetic coupling ensures accurate alignment, reducing spin-outs during acceleration or deceleration
- Performs routine stirring applications with low vibration and quiet operation

U.S. and E.U. Utility Patent Pending  
U.S. Design Patent No. D814,045

Item No.	Color	L x W x H in	L x W x H cm
120155	Grey/Purple	7.2 x 5.2 x 1.85	18.3 x 13.2 x 4.7
120595	Grey/Blue		

### Replacement Part

120815	Mini Stirrer Universal Power Adapter
--------	--------------------------------------

### Specifications

**Speed Range** 200–2,200 rpm (Infinitely adjustable)

**Capacity** Up to 3 L

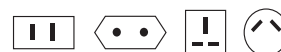


### Package Includes

Mini Magnetic Stirrer

2 Stir Bars 35 mm x 9 mm, Octagonal Shape

1 Low Voltage, Double Insulated Power Adapter (100-240 VAC, 50/60 Hz) with 4 Interchangeable Plugs







## Stir Bars & Stir Bar Retriever

- Magnetic bar is made from ALNICO, one of the strongest permanent magnets available
- The sintered manufacturing process reduces the chance of decoupling (spin outs), encapsulation in PTFE protects both magnet and what it is stirring
- Chemically inert and easy to clean
- Can withstand temperatures up to 250°C, making them suitable for use with both unheated and heated stirrers
- Low friction octagon shape with a center pivot ring helps create a strong mixing vortex, even with more viscous solutions
- The retrieval bar can recover stir bars even in hot solutions when stirring and mixing is no longer required

10 x 5 mm

20 x 8 mm

25 x 8 mm

28 x 8 mm

30 x 8 mm

35 x 9 mm

### Stir Bars

Pack of 10

Item No.	L x W (in)	L x W (mm)
120547	0.4 x 0.2	10 x 5
120548	0.8 x 0.3	20 x 8
120549	1 x 0.3	25 x 8
120550	1.1 x 0.3	28 x 8
120551	1.2 x 0.3	30 x 8
120552	1.4 x 0.4	35 x 9

### Stir Bar Retriever

Pack of 5

Item No.	L (in)	L (cm)
120553	11.8	30



Octagonal Shape

## Lab Mats

Two Lab Mat options to keep your workstation safe, quiet, clean and organized



### Workstation Lab Mat

gridded surface for tube staging & preventing movement of small objects

### Silicone Lab Mat

large noise dampening work surface with lipped edge to contain spills



Models 120209, 120212, 120214

## Vortexer

### Multi-purpose, maximum convenience

#### Innovative Design

- One mixing head does it all with this sleek, modern and compact designed vortex mixer
- Hold slot configurations for multiple sizes of tubes, vessels and assay plates
- Center pad for quick hand-held mixing

#### Easy to Use

- Control switch with three operation selections (intermittent, off, continuous)
- Variable Speed Rotary Dial provides pre-set speed control selection during shaking mode

#### Durable Construction

- ABS material resist most commonly used chemicals and is easy to clean
- Stable elastomer feet dampen vibration and prevent movement during operation



Center pad area for hand held mixing



Assay plate x 1 (to be used with retention cords)



25 mL, 50 mL conical tubes x 2 (horizontally mounted)



15 mL conical tubes x 2 (horizontally mounted)



5 mL tubes x 2 (horizontally mounted in the same retention space as 15 mL)



0.5 mL microfuge tubes x 6 (vertically mounted)



1.5/2.0 mL microfuge tubes x 4 (vertically mounted)



0.2 mL microfuge tubes (strip tubes) x 24 (vertically mounted)

US Design Patent No. D787,085  
US Utility Patent No. 9895670

Item No.	Speed Control	Power Input	L x W x H in	L x W x H cm
120209	Infinity Dial	110-120 VAC, 50/60 Hz, 55 W, US/NA		
120212	Infinity Dial	220-240 VAC, 50 Hz, 44 W, CA		17.1 x 19 x 19.7
120214	Infinity Dial	220-240 VAC, 50 Hz, 44 W, UK		(with mixing head in place)
120210	Preset Dial	220-240 VAC, 50 Hz, 44 W, AUS		(with mixing head in place)
120318	Preset Dial	100-110 VAC, 50/60 Hz, 66 W(PSE), Japan		

Replacement parts	
120327	Vortexer Multi-Head
120328	Vortexer Central Pad, 3 pk
120422	Vortexer Retention Cords, 3 pk
120329	100-120 VAC US Cord

Replacement parts	
120333	220-240 VAC AUS Cord
120332	220-240 VAC CE Cord
120331	220-240 VAC UK Cord
120330	100-110 VAC Japan Cord

#### Specifications:

**Speed Range** Approx. 1,000; 2,000; 3,000 rpm

**Orbit** 3.7 mm

**Control** 3 Position Control — (top) intermittent, (middle) off, (bottom) continuous







## Mini Vortexer

Small footprint with maximum power

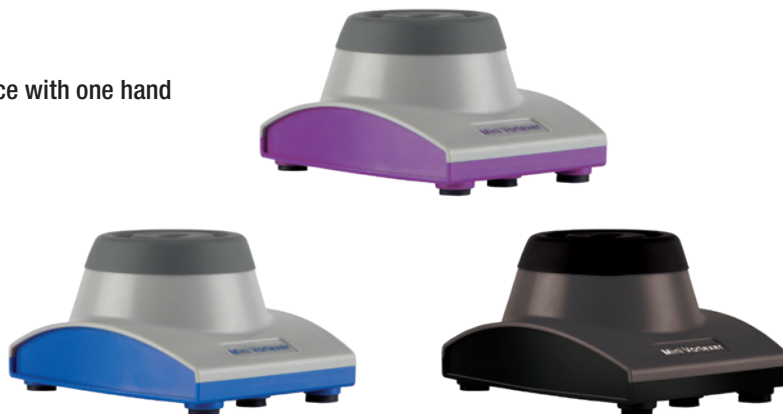
Simple, touch start operation offers exceptional mixing performance with one hand

### Robust Design

- Low profile design and small footprint saves valuable space
- Made of ABS and silicone materials that resist most commonly used chemicals
- Stable platform and elastomer feet ensure unit stays stable during operation

### Powerful Function

- Rapid vortex action with low activation force
- Quiet operation and low vibration



U.S. and E.U. Utility Patent Pending  
U.S. Design Patent No. D814,045

Item No.	Color	L x W x H in	L x W x H cm
120567	Grey/Purple	5.1 x 4.3 x 3	13 x 11 x 7.5
120598	Grey/Blue		
120827	Black/Black		

### Replacement parts

120617	Mini Vortexer Silicone Cover, set of 2
120814	Mini Vortexer Universal Power Adapter

### Specifications

Speed	4,500 rpm
Orbit	6 mm
Capacity	Up to 50 mL tube



### Package Includes

- Mini Vortexer
- 2 Silicone Caps
- 1 Low Voltage, Double Insulated Power Adapter (100-240 VAC, 50/60 Hz) with 4 Interchangeable Plugs





**5**  
Year  
Warranty

**Hi-Lo Platform & Bungee Cords**  
allows you to create your own holding matrix for vessels of all shapes and sizes

**Time and Speed**  
can be separately set

**Back-lit Display**  
is easy to read

## Digital Orbital Shaker

### Shaker for a vast range of protocols

#### Versatile Design

- Create your own matrix for vessels of all shapes and sizes with Hi-Lo Platform and Bungee Cords
- Instantly adjusts to weight load changes and unbalanced loads with no-stop electronic motor feedback allowing for truly reproducible results
- Durable ABS construction suitable for use in incubators (excluding CO2) and cold rooms within the stated temperature range

#### High-Featured Operation

- Suitable for wide range of protocols including very low start speed for sensitive sample agitation to high speeds for vigorous applications
- Soft start and shut down feature reduces spilling from full vessels
- Designed to handle heavy loads up to 10 lbs (4.5 kg)
- Overload protection shut-off prevents overloading



Item No.	L x W x H in	L x W x H cm	Platform Interior in	W x D cm
120460	12.4 x 7.8 x 12.2	31.4 x 19.7 x 31	11 x 11	27.9 x 27.9

#### Replacement parts

120521	Digital Orbital Shaker Silicone Mat & Bumpers
120524	Digital Orbital Shaker Bungee Cords, Pack of 8
120491	Digital Orbital Shaker Universal Power Adapter

#### Specifications

<b>Speed Range</b>	20–300 rpm, 1 rpm increments
<b>Orbit Diameter</b>	19 mm (0.8")
<b>Run Time Range</b>	0 to 74 hours and 59 minutes; 1 second increments or continuous
<b>Maximum Load</b>	4.5 kg (10 lbs)



#### Package Includes

- Digital Orbital Shaker
- Skid-Free Rubber Platform Mat
- 8 Bungee Cord Set
- Universal Hi-Lo Platform with Soft Rubber Edge Bumpers
- 1 Low Voltage, Double Insulated Power Adapter (100-240 VAC, 50/60 Hz) with 4 Interchangeable Plugs







Battery and Filter not included in warranty



**Soft-Coated Triggers**  
with direction indicators

**Ergonomically Balanced**  
in the hand with a loaded pipette

**Universal Grip**  
for right- or left- handed users



**Adapter**  
for small pipettes

## RF3000®

Packed with features for comfortable and accurate pipetting

The powerful pump offers rapid, yet sensitive aspiration and dispensing, has adjustable valves and is microprocessor controlled for constant reliability and accuracy

- Long-life li-ion battery, with quick charge—up to 20 hours use
- Toggle operation by pressing the large mode button
- An adapter can be fitted to the nose cone to stabilize small volume and thinner pipettes
- New USB connector ensures the appropriate charger is used with the unit
- Low-battery indicator
- Can be recharged when in use



Nose cone assembly only



**Storage Stand**  
doubles as a charging station

### Easy Identification

5 different colored nose cones help differentiate department, task or user; as well as a labeling area on the side of the unit



### Magnetic & Screw Wall-Mount



### 3 Modes

Bright LEDs indicate 3 operation modes: high, low, & gravity



### Specifications

<b>Power</b>	Micro-USB connector Rechargeable li-Ion battery (replaceable)
<b>Filter</b>	PTFE/25mm dia/0.45 µm filter
<b>Pipettes</b>	1–100 mL, glass and plastic
<b>Pipette Nozzle</b>	Polypropylene



### Package Includes

- RF3000® Pipette Controller
- Charging Stand and Wall-Mountable/Magnetic Holder
- Nozzle Adapter for use with Small Pipettes
- Li-Ion Rechargeable Battery
- Five Nose Cones: Black, Yellow, Red, Grey and Blue
- 5VDC Micro USB Plug
- 6 ft (183 cm) Cable
- 1 Low Voltage, Double Insulated Power Adapter (100-240 VAC, 50/60 Hz) with 4 Interchangeable Plugs



\*Assorted colors (Black, Blue, Grey, Red and Yellow)

Item No.	Volume Range mL	L x W x H in	L x W x H cm
HS3000	1–100	9 x 8.5 x 5	22.9 x 21.6 x 12.7

### Replacement parts

HS5000RFFIL	RF3000® Replacement Filters, Pack of 5		
120669	RF3000® Universal Power Adaptor 5VDC Micro USB Plug		
HS300502	RF3000® Li-Ion Rechargeable Battery, One year warranty on battery included		
120487	RF3000® Nose Cones Assorted* ■ ■ ■ ■ ■ Set of 5		
HS5000RFRFA	RF3000® Replacement Filter Adapter		
HS5000RFRP	RF3000® Replacement Pipette Adapter		

## Pipette Controller

Precise fluid control at your finger tips

Comfortable to hold and easy to use, the manual inline pipette controller was designed with an ergonomic grip and bulb for simple and precise operation

A T-bar thumb lever controls the aspirating and dispensing speeds from serological pipettes from 1 to 100 mL in size

- Conveniently accommodates either glass or plastic serological or volumetric pipettes ranging from 1–100 mL
- Includes a replaceable .45 µm hydrophobic filter to protect your samples and internal components



Nose cone assembly only

Item No.	Color	Volume Range mL	L x W x H in	L x W x H cm
120479	Blue ■	1–100	9 x 2.1 x 2.1	23 x 5.4 x 5.4

### Operation Is Simple:

#### Squeeze the bulb

to create a vacuum to draw up fluid

#### Push the control lever forward (down)

to dispense the liquid

#### Push the control lever backward (up)

to aspirate liquid through a pipette

#### Press the central bulb on the unit

to blow out any remaining fluid if necessary



**Inline Ergonomic Design**  
reduces stress with ease of handling and operation

**Squeeze**  
to create a vacuum

**1 Year Warranty**

Filter not included in warranty

### Stay Organized

with two additional nose cones (green, white) for color identification for both the Pipette Controller & RF1000



**Squeeze**  
to create a vacuum

**1 Year Warranty**

Filter not included in warranty

## RF1000

Lightweight and easy to use

The RF1000 manual pipette controller is uniquely designed for one-handed operation

Simply squeeze the main bulb and push the toggle forward to aspirate or back to dispense. Push the blowout bulb to expel any liquid remaining in the pipette

- Tapered silicone rubber pipette adapter allows a large range of pipette sizes ranging 1–100 mL and is replaceable
- Includes a replaceable .45 µm hydrophobic filter to protect your samples and internal components



Nose cone assembly only

Item No.	Color	Volume Range mL	L x W x H in	L x W x H cm
HS1000RFU	Blue ■	1–100	7.1 x 1.8 x 4.7	18 x 4.5 x 12

### Replacement Parts

Item No.	Description	Color
HS5000RFFIL	Replacement Filters, Pack of 5	
120604	Nose Cone with Adapter	Blue ■





## Pearl® Adjustable Volume Pipettes

### Precision liquid handling

A complete range of single- and multi-channel pipette volumes to cover all your possible needs

The sleek, ergonomic design and reduced plunger pressure help reduce the chance of Repetitive Stress Injury (RSI), as the pipettes require 2/3 the operation pressure of most standard pipettes

Each pipette is calibrated and a calibration certificate is supplied. Manufactured in accordance with ISO8655 and GMP regulations

- Internal metal parts for increased accuracy and calibration stability
- Separate tip ejector with the exception of the 500 mL (120105)
- Large digit volume display



#### Ergonomic

Slight downward slant to tip ejector button reduces hand fatigue, incidence of repetitive strain injury (RSI)

**Volume Adjustment**  
and low-force dispensing  
all in one button for  
convenience

**Finger hook**  
**3-Position volume display**

**Volume Locking Ring**  
prevents accidental  
volume changes

**Color Coded & Labeled**  
with volume range (Both top & side  
colored components for quick visual  
confirmation)

**Precision Metal Components**  
for both shaft and barrel ensure reliable  
performance and long life

No. of Channels	Item No.	Color	Volume Range µL
Single	120097	Green	0.1–2 µL
	120098	Lt. Blue	0.5–10 µL
	120099	Lt. Purple	2–20 µL
	120100	Orange	5–50 µL
	120101	Blue	10–100 µL
	120102	Yellow	20–200 µL
	120103	Purple	30–300 µL
	120104	Blue	100–1,000 µL
	120105	Pink	500–5,000 µL
	120106	Red	1,000–10,000 µL
Eight	120215	Orange	5–50 µL
	120216	Purple	30–300 µL
Twelve	120217	Orange	5–50 µL
	120218	Purple	30–300 µL



## Pipette Starter Kit

### Universal Carousel Pipette Stand

Hold and store pipettes in style with the Universal Carousel Pipette Stand by Heathrow Scientific that holds up to 8 single-channel, 4 multi-channel, or a combination of both pipettes

A sleek and modern design enables this stand to securely hold virtually every known brand of pipette in the marketplace making it truly 'universal' while adding a pop of color to a bench top

### Reagent Reservoirs

Multi-channel reservoirs by Heathrow Scientific are superior in every way with thicker walls, crush-resistant "turrets" at the corners, easy pour-spouts, 25 mL graduation marks, and tabs to prevent stacked reservoirs from sticking together

### Pearl® Pipettes

Pearl Pipettes by Heathrow Scientific were specifically engineered for ease of use and comfort

The sleek, ergonomic design and reduced plunger pressure help reduce the chance of Repetitive Stress Injury (RSI), as the pipettes require 2/3 the operation pressure of most standard pipettes


Each pipette calibrated and a calibration certificate is supplied

Manufactured in accordance with ISO8655 and GMP regulations






### Pipette Starter Kit Item No. 120554

**Universal Carousel Pipette Stand** *For more information see page 45*

Upper Holder Color	Lower Holder Color	Base Width in	Top W x H in	Base Width cm	Top W x H cm
Assorted/Clear 	Clear <input type="checkbox"/>	6.2	9 x 16.1	15.8	22.9 x 40.8

\*Assorted colors (Purple, Blue, Green, Grey, Red Orange, Yellow and Clear)

**Pearl® Pipettes - Single Channel** *For more information see page 18*

Color	Volume Range μL
Lt. Purple 	2–20 μL
Yellow 	20–200 μL
Blue 	100–1,000 μL

**Reagent Reservoirs** *For more information see page 51*

Color	Volume mL	Material	Sterility	L x W x H in	L x W x H cm
White <input type="checkbox"/>	50	Polystyrene	Sterile	4 x 1.1 x 1.2	10.2 x 2.8 x 3

\*All parts available separately





# eCount

Rapid, accurate colony counter

Combines a multi-function electronic counter with a Sharpie® Pen for marking to prevent missing or double-counting colonies

- Light, ergonomic body is balanced for easy manipulation
- Select between an audible beep or an LED flash to acknowledge count
- Store up to 32 separate counts and display the total of all counts
- Count up/down verification
- Quick and easy to change between different colored markers to check different colony counts in the same view

#### Package Includes:

- eCount Colony Counter
- Black Sharpie® Pen (Page 26)
- Long-life button battery included
- Hand tally Adapter
- Weighted Stand



US Patent No. D564,385  
EP Registered Design No. 705751-0001

Item No.	L x W in	L x W cm
120000	7.4 x 1.2*	17 x 3*
120228	CR1225 Battery	

\*Measurements shown are with Sharpie® Pen inserted



Battery and Pen not included in warranty



#### Lock Counter Off

to allow use of the marker without registering more counts

#### Hand Tally Adapter

allows you to use the eCount as a digital tally counter



Weighted Stand  
for bench top use



### Mini-Light Box and Mini-Magnifier

Perfect accessories for the eCount or use as stand-alone items



#### Mini-Light Box

- LED Light source. Color temperature 5,300K +/- 270K
- Viewing area (125 x100 mm) is perfect for quick screening of 96-well plates, petri dishes, electrophoresis gels, slides, and transparencies
- Powered by six 1.5V AAA batteries (included), not included in warranty

#### Mini-Magnifier

- Swiveling molded lens 1.75x magnification
- Enlarges objects for easier viewing

Item No.	Description	L x W x H in	L x W x H cm
120661	Mini-Light Box*	6.2 x 5.9 x 0.6	15.8 x 15 x 1.4
HS15092D	Mini-Magnifier	6.3 x 5.3 x 8.1	16.1 x 13.5 x 20.7

\*Batteries included



### Hand Tally Counter

Use for counting blood cells, bacterial colonies, drops of liquid or any repetitive event

- Tallies up to 9999
- Features a quick-reset knob
- Lens for easy reading, and finger ring for a secure grip

Item No.	Dia. x W in	Dia. x W cm
HS6594	1.8 x 1.6	4.6 x 4.1



### Benchtop Counters

Mechanical, benchtop counters are perfect for blood cells (label included), bacterial colonies or repetitive counting

- Each key records up to 999
- Blood cell key labels
- Total window keeps track of total number of strokes made on all other keys; bell rings when total reaches 100

Item No.	No. of Keys	L x W x H in	L x W x H cm
HS5360A	6-Key	9.8 x 3 x 2.2	25 x 7.6 x 5.6
HS5360B	9-Key	12.5 x 3 x 2.2	32 x 7.6 x 5.6