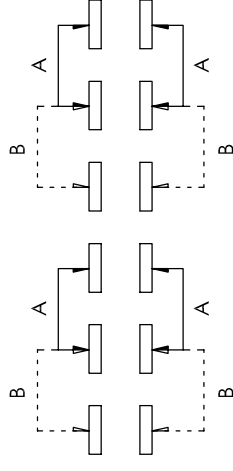


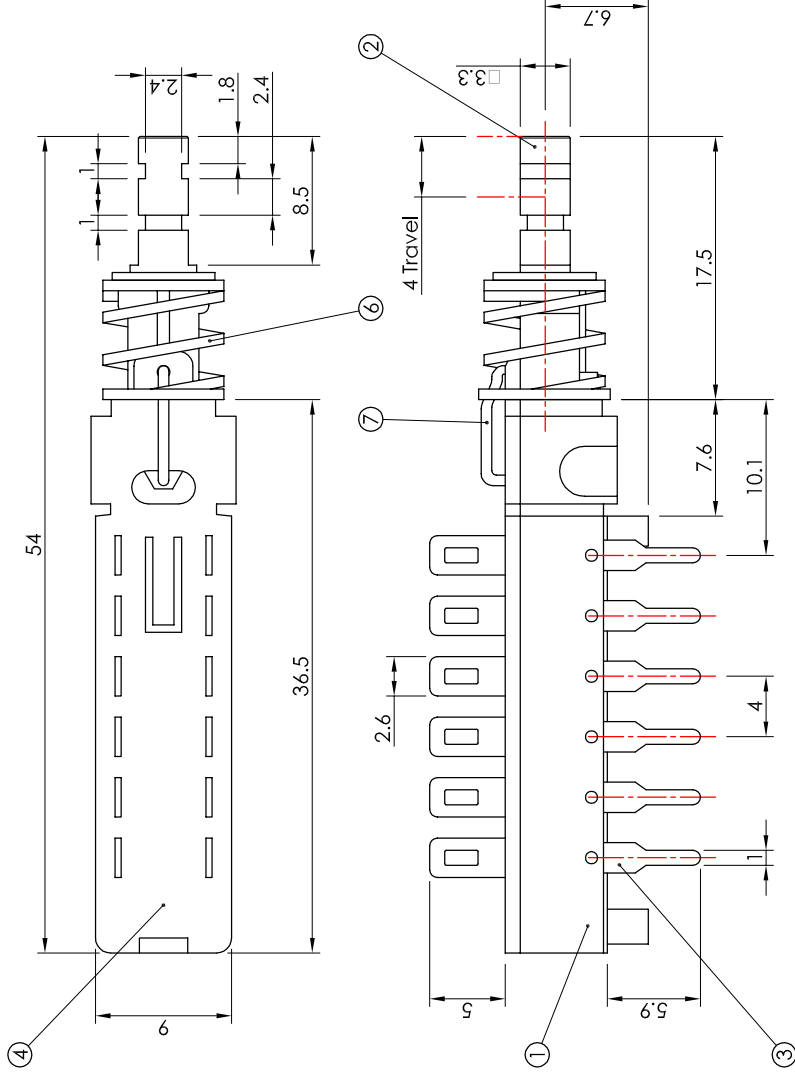
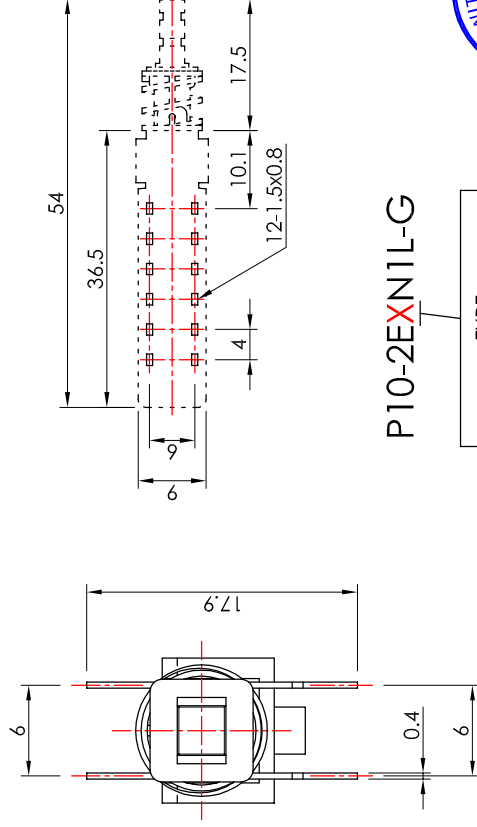
版本：V2.2

本圖面若與目錄之規格尺寸不符，以本圖面規格尺寸為主。
Below is our main specification if different from catalog.

SCHEMATIC



P.C.B. LAYOUT



SPECIFICATION

Rating: 0.5A 30V DC.
Contact resistance: 30mΩ Max.
Insulation resistance: 100MΩ at 500V DC.
Withstand voltage: 500V AC for 1 minute.
Operation force: 300±100g.
Switching life: 10,000 Cycles Min.
 (unloading/15-18 Cycles per minute).
Soldering temperature: 230±5°C for 2±0.5 Sec.

MATERIAL

Frame: PC. _____ ①
Knob: POM. _____ ②
Terminal: Brass, Ag plated. _____ ③
Terminal base: Nylon. _____ ④
Contact: Brass, Ag plated. _____ ⑤
Spring: Steel wire. _____ ⑥
Hook: steel wire. _____ ⑦

P10-2EXN1L-G

TYPE	
A	LOCK
N	NON-LOCK



V2.1	無	新繪製	2006.09.05
V2.0	符號	修改內容	更新日期
版本	SYMBOL	ALTERATION	DATE

產品	型號	P10-2EAN1L-G	
製圖	MODEL NO.	單位	mm
核圖	主 管	比例	2 : 1
CHECKED BY	APPROVED BY	SCALE	
Alvin Lin	Morgan Lee	公差	.X=±0.3mm, .XX=±0.2mm
DRAWN BY		TOLERANCE	
Charlie Fong			

SWITRONIC
INDUSTRIAL CORP.
Switches

ISO 9001
TUV CERT
Cert. No. 041008741

一綺電子企業股份有限公司
 總公司：110 台北市信義路四段415號12樓之2
 12F-2 NO. 415, SEC. 4, HSIN YI ROAD, TAIPEI (110), TAIWAN
 TEL : 886-2-27290229 (Rep.) FAX : 886-2-27582086
 URL : http://www.switronic.com.tw
 E-MAIL : switches@ms36.hinet.net