



Chicago Pneumatic

ทูลส์ แอก
ToolsAct
SIMPLE SOLUTION

02 096 3735



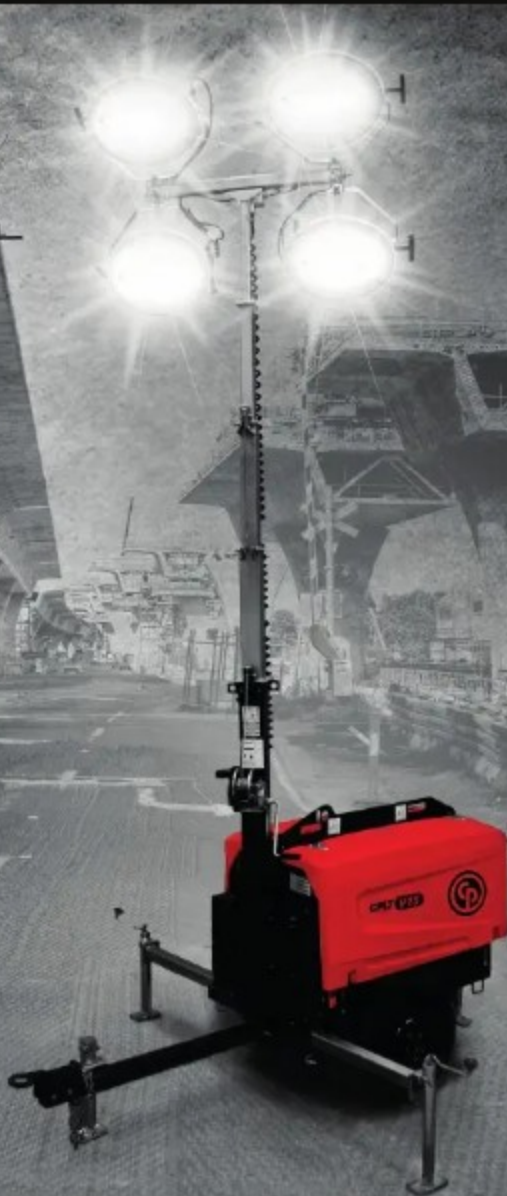
Tools Act ขาย เช่า ซ่อม
เครื่องมือและอุปกรณ์ช่าง



@toolsact



www.toolsact.com



**People.
Passion.
Performance.**

CPLT V15 and CPLT V15 LED

Technical specifications

CP Light Tower

CPLT V15 NEO

Frequency: 50 | 60 Hz

Factory: Wux, China



CPLT V15 NEO for reference

General description

The innovative light tower incorporates state-of-the-art surface mount device (SMD) LED lighting technology to provide excellent performance and efficiency. Operators at construction sites, events, mines, emergency applications and rental companies will be able to reduce their carbon footprint and operating costs while improving sustainability levels, with 20% more Light coverage than COB LED type.

Combining the use of a low-consumption diesel engine, the new CPLT V15 NEO light tower offers users maximum efficiency setting to make the most of the energy available.

TECHNICAL INFORMATION

Reference conditions		
Absolute inlet pressure	bar	1
Relative humidity	%	30
Air inlet temperature	°C	25
Performance data		
Light Coverage (20 lux avg)	m ²	5.000
Light Coverage (min 1 lux - 75°)	m ²	9.366
Rated Frequency	Hz	50 60
Rated voltage	Vac	230 240
Power output	kW	2,3 2,4
Operating temperature (min/max)*	°C	-25 / +50
Altitude capability	m	3500
Relative air humidity maximum	%	85
Maximum sound power level (LWA)**	dB(A)	88
Sound pressure level (LpA) at 7 m	dB(A)	65
Fuel tank capacity	l	110
Oil service interval	h	600
Mast height	m	7
Mast type / rotation		Manual / 340°
Wind speed stability***	km/h	80
Fuel consumption at all floodlights ON	l/h	0,62 0,61
Fuel autonomy at all floodlights ON	h	177 180

*Option "Cold weather" might be needed.

**Complies with 2000/14/EC

***Consult Atlas Copco for conditions reference.

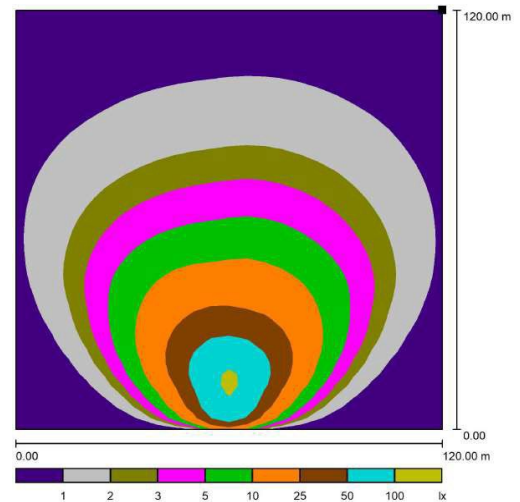
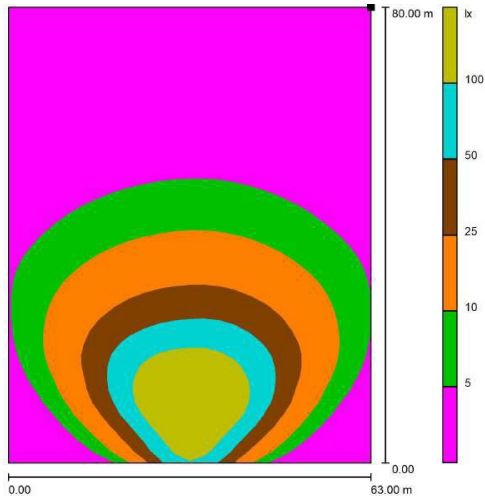
Atlas Copco will keep the rights to change any data when necessary due to any reason.

Canopy		
Canopy		RedRock®
Type		Undercarriage without Spillage Free frame*
Engine		
Brand and Model		Kubota Z482
Speed	rpm	1500 1800
Rated net output (PRP)	kW	4,1 4,9
Coolant system		Coolant
Aspiration / Combustion system		Natural / Direct Injection
Number of cylinders	Cylinder	2
Speed governor		Electronic
Capacity of oil sump	l	2,5
Capacity of cooling system	l	4
Electrical system	Vdc	12
Emission stage		Stage 3A
Alternator		
Brand and Model		ACA132B ACA132B
Rated output	kVA	3 4
Protection degree		IP23
Insulation class		H
Number of wires	Wires	4

* Spillage Free frame is an option

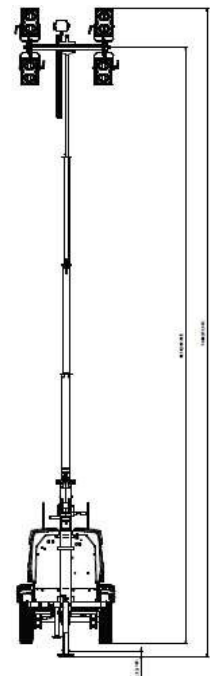
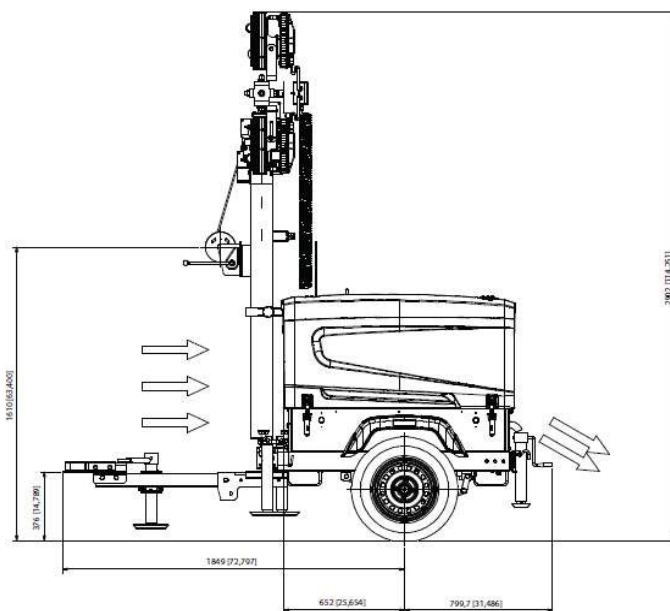
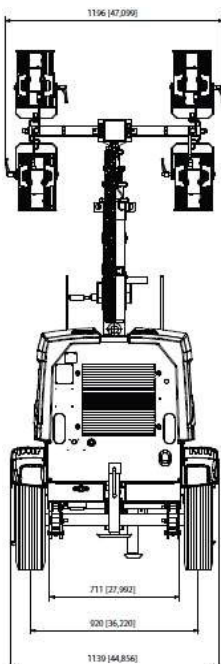
Lamps

Number of lights	Unit	4
Technology		SMD LED
Floodlight power	W	250
Total Lumen	lm	155.000



Dimension and weight

Length x Width x Height in transport mode	mm	1892 x 1076 x 2902
Length x Width x Height in operation mode	mm	2649 x 2318 x 7000
Weight (dry / wet)	kg	702 / 796



Mechanical Options

Spark Arrestor

Towing hitch combo

Towing hitch ball coupling 2 inch

Towing hitch ring 2.5 inch

Adjustable towing support

Spillage Free frame

Electrical Options

Cubicle ELCB with universal socket 230V 50Hz | 240V 60Hz

Cubicle ELCB without socket

Cubicle with universal socket 230V 50Hz | 240V 60Hz

Road light system

E-Stop

Earth pin

Battery isolator

DC E-winch

Lc1003™

Technical specifications

CPLT V3 LED

Frequency: 50 Hz

Factory: Wux, China



CPLT V3 LED for reference

General description

The Chicago Pneumatic CPLT V3 LED is designed to offer the ease of usage when it comes to finding the compact light tower that is right for your application. The CPLT V3 LED comes with a robust steel frame and HardHat® bumpers which guarantee its toughness. With plug & light, this CPLT V3 can light up your sites as long as there are energy power sources available - a portable generator, a small BESS or power grid will be enough for operating this light tower. Lastly, with the COB LED technology, this CPLT V3 LED saves up your money on fuel cost savings as these floodlights consume lesser power but provide brighter and wider light coverage area, comparing to traditional metal halide floodlights.

TECHNICAL INFORMATION

Reference conditions		
Absolute inlet pressure	bar	1
Relative humidity	%	30
Air inlet temperature	°C	25
Performance data		
Light Coverage (10 lux avg)	m ²	2.500
Rated Frequency	Hz	50
Rated voltage	Vac	230
Operating temperature (min/max)*	°C	-25 / +50
Altitude capability	m	3.500
Relative air humidity maximum	%	85
Mast height	m	5
Mast type		Manual
Wind speed stability**	km/h	80
Design		
Energy Source		Electric
Type		Heavy duty trailer with RedRock® bumpers

*Depends on generators. "Cold weather" for generators might be needed.

**Consult Atlas Copco for conditions reference.

Atlas Copco will keep the rights to change any data when necessary due to any reason.

Lamps

Number of lights	Unit	4
Technology		COB LED
Floodlight power	W	120
Total Lumen	lm	60.000
LED Lifespan	hrs	50.000

Dimension and weight

Length x Width x Height in transport mode	mm	1142 x 851 x 2000
Weight (dry)	kg	110

